

## Underwater IP68 12\*20mm LED Flex Neon Light



The Underwater IP68 LED Flex Neon Light is made of high quality super bright SMD2835 as light source and food-grade environment-friendly silicone material. The features of flexible, durable, non-dot lighting effect and highest water-proof level makes it perfect lighting solution for indoor, outdoor and underwater applications . It works under constant voltage DC24V safety operation, installation and maintenance. Side Bend 12\*20mm size can meet 90% underwater applications.

---

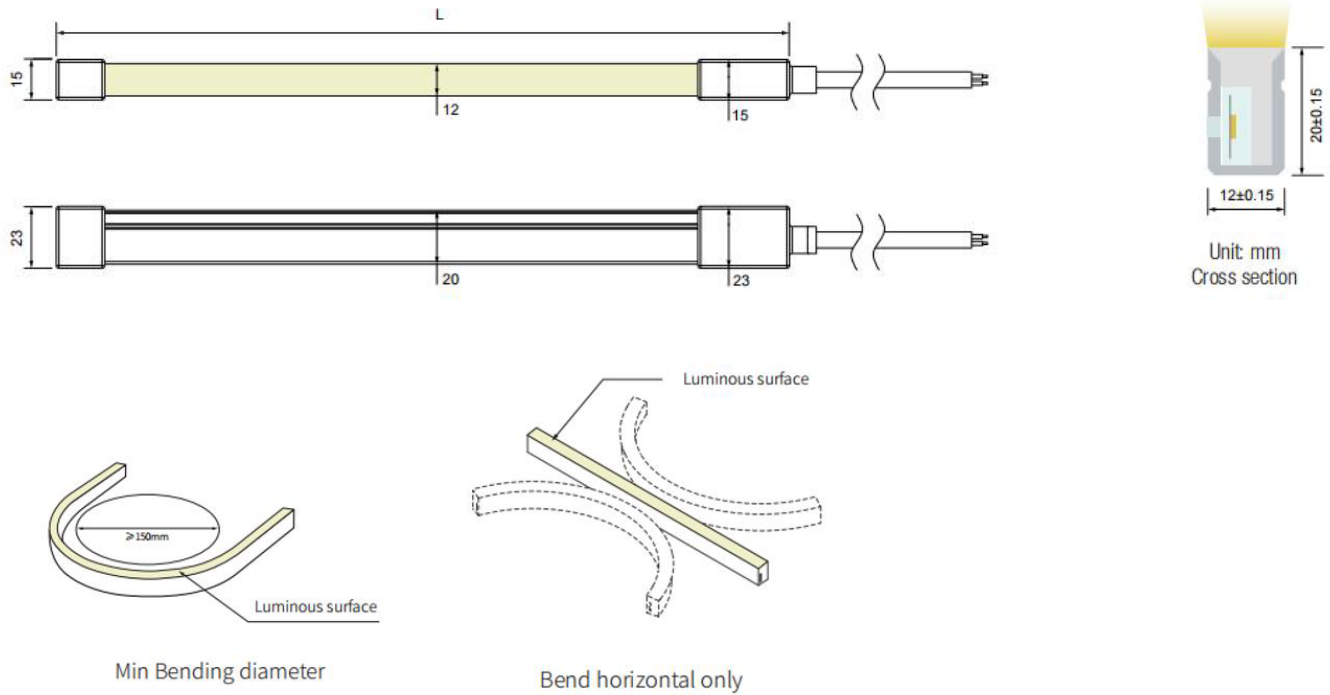
## Product Parameters

Product Name	Underwater IP68 LED Neon Light
Model No.	TC-NL1220-IP68-XXK
Product Dimension(MM)	W12*H20
Source Type / Qty	SMD2835, 120leds/meter
Input Voltage	DC 24V
Color Temperature	2400K±150K / 2600K±150K / 3000K±150K / 4000K±300K / 6100K±400K ( CCT/RGB/Pixel SPI RGB Optional )
Ra/CRI	>90
Beam Angle	120°
Rated Power	10W/M
Light Efficacy	25-30lm/w
Lifespan	50,000 hours
Working Temperature	-20°C - 45°C
Storage Temperature	-30°C - 65°C
IP Rate	IP68 (Can be used underwater)
Warranty	3 years
Cut Unit	50MM
Bend Direction	Bend Horizontally Only

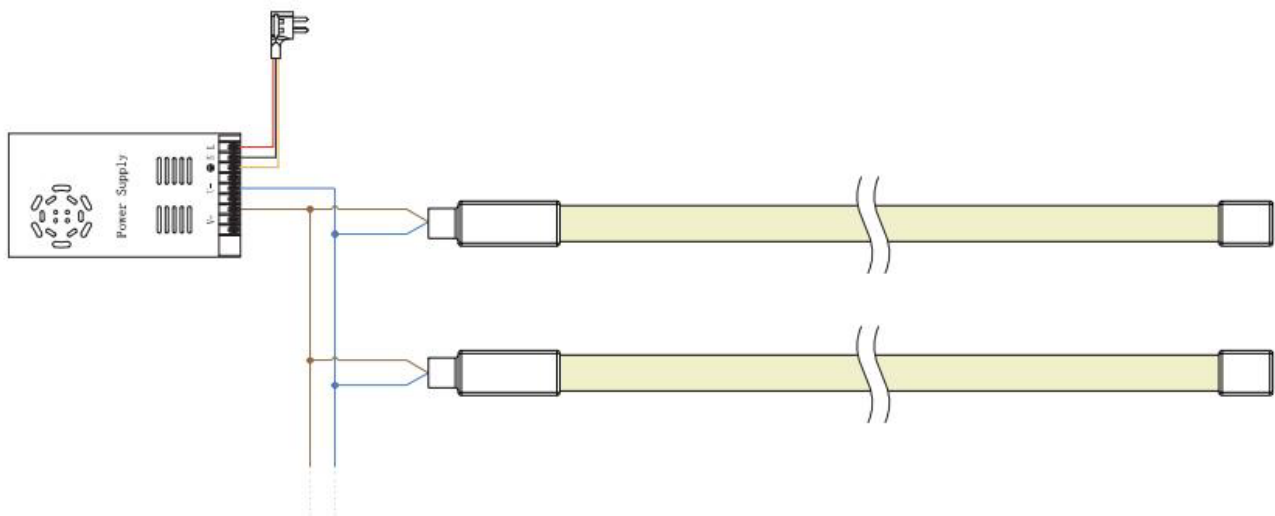
## Product Features

- \* High quality super brightness SMD2835 as light source
- \* High-conductivity double-layer pure copper FPCB, better heat dissipation
- \* Single color, CCT, RGB multiple colors can meet different lighting scenes
- \* Integrated extrusion molding process, advanced processing technology
- \* Multiple installations, stainless clips, aluminum channels or PC channels for option
- \* Food grade high strength silicone as material, highest waterproof rate IP68, can be used underwater, such as swimming pool
- \* Low power consumption for energy saving
- \* Long lifespan, 3 years warranty
- \* CE/ROHS/FCC approved

## Product Dimension

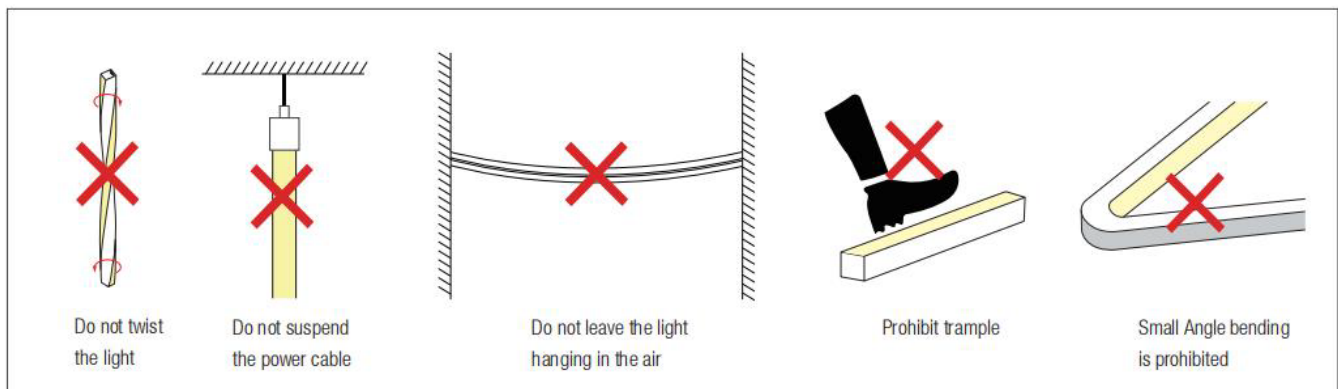
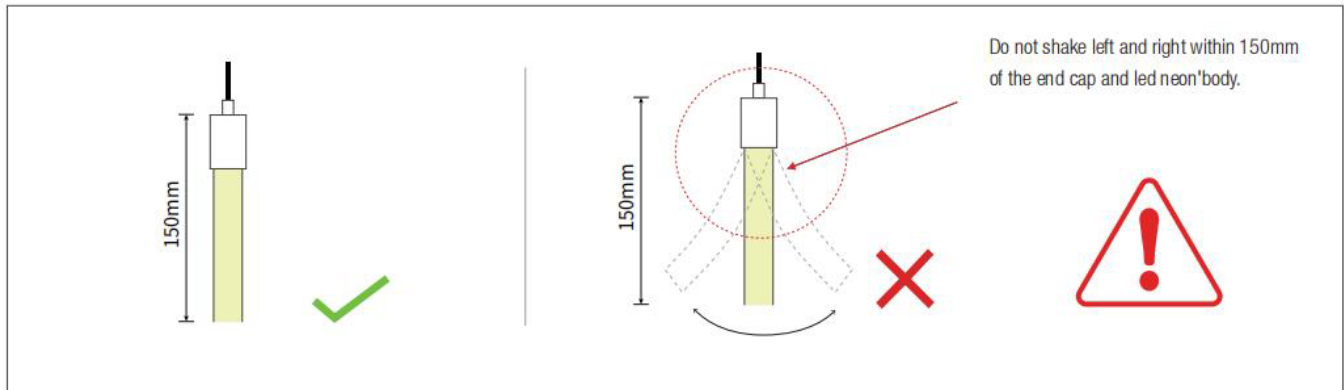


## Installation Wiring

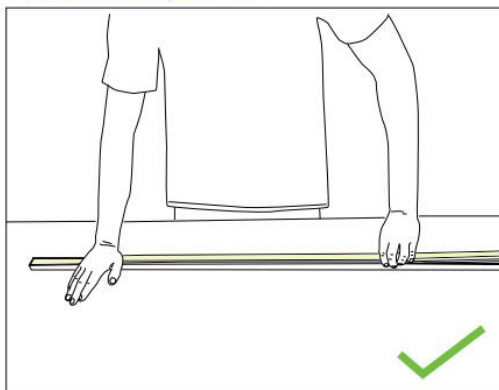


- \* Make sure of the total watts of LED strip lights is less than 80% of the power supply's max output.
- \* Match the right connection, Brown for V+, Blue for V-.
- \* Input DC 24V according to the mark on wire label.
- \* It is suitable to be used under water.

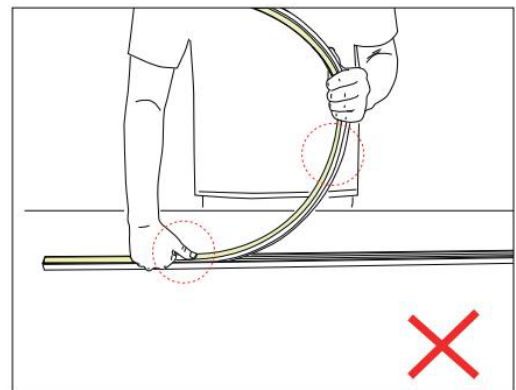
## Installation Precautions



### Put it in the profile

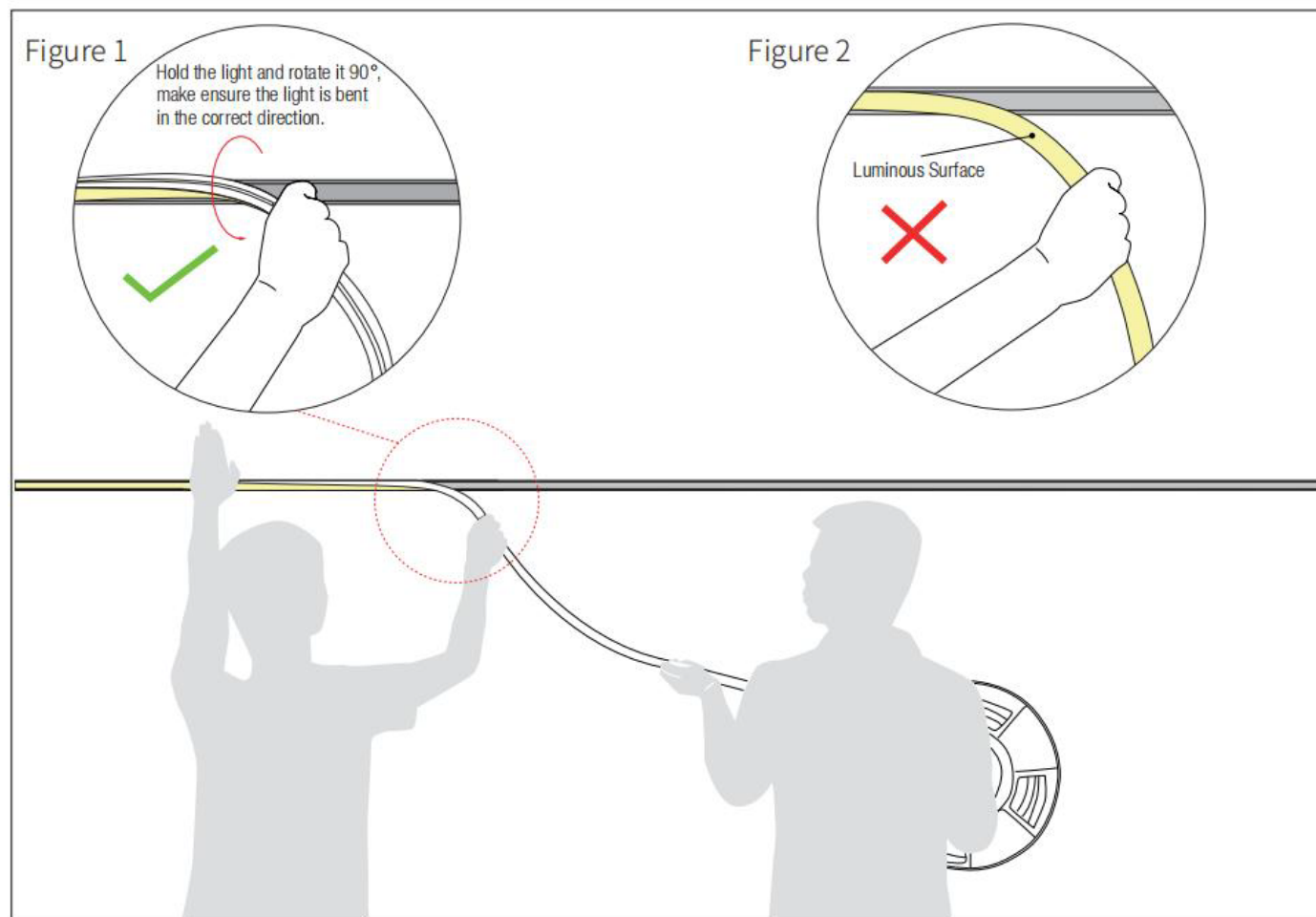


- Please press the led strip with your palm to slowly insert the led strip into the groove, and gently straighten the led strip above the groove with your right hand.
- Try to keep the led strip in a flat state during the installation process.



- Do not press the led strip with a single finger, it is easy to damage the internal parts of the led strip.
- The bent arc of the led strip should not be too large during installation.

**Installation Precautions — Side Mounted** ( If the length of the light is more than 2 meters, two persons must work together to install it. )

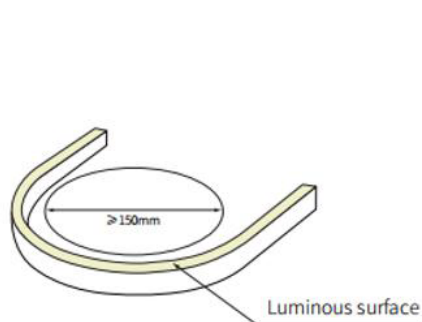


**1. Installer:**

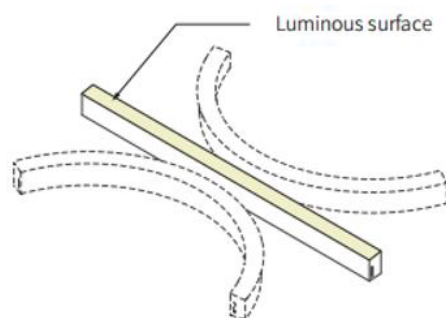
- Press the light with the palm of the left hand to slowly load it into the slot. Straighten the light with right hand, hold it and rotate it 90° to droop it in the direction of your hand. See Figure 1.
- Do not bend the luminous surface to the side. See Figure 2.

**2. Assistant:**

- Cooperate with the installer to lift the reel of the light, and then slowly deliver the light to installer. Do not pull or twist the light during the installation.



Min Bending diameter

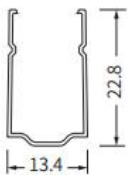


Bend horizontal only

---

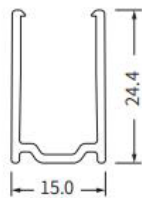
## Optional Accessories

Mounting Clips



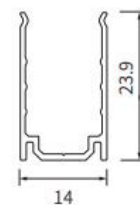
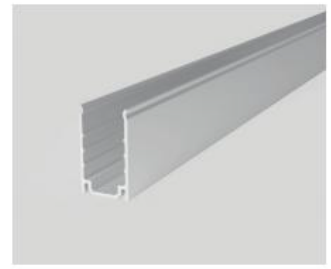
Dimension:  
20x13.4x22.84mm  
Accessories:  
Screw M3x15mm

PC Profile



Dimension:  
1000(±5)x15.0x24.4mm  
Accessories:  
Screw M3x15mm

Aluminium Profile

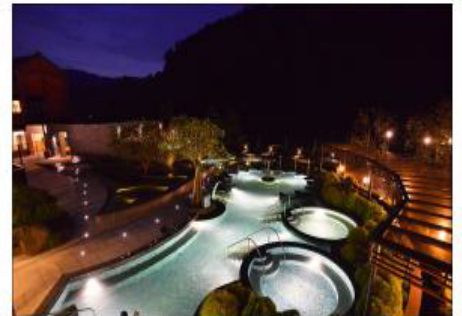
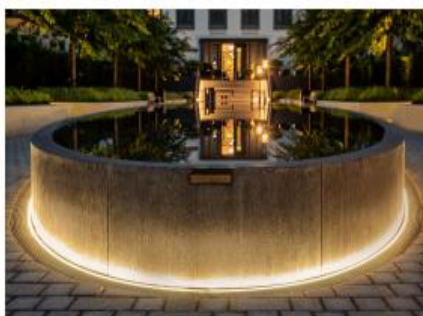
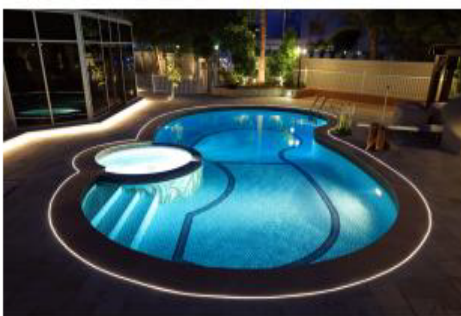


Dimension:  
1000(±5)x14x23.9mm  
Accessories:  
Screw M3x15mm

⚠ Aluminum profiles cannot be used in swimming pools.

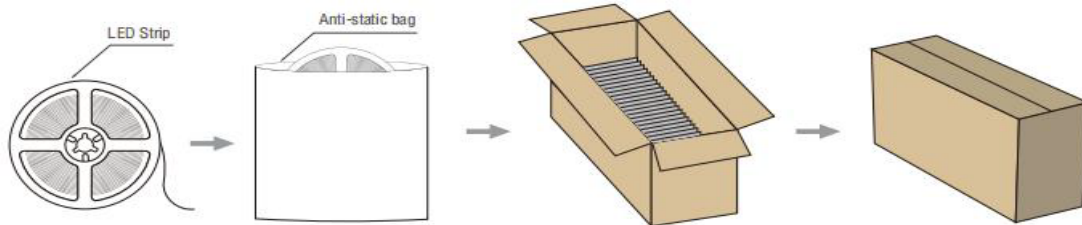
## Application

Ideal for: indoor and outdoor applications, and under-water locations, such as fountains, swimming pools, springs, etc.



---

## Package



- ① 5 meters per roll.
- ② Each roll packed with anti-static bags, and neutral or customized label on it.
- ③ 5 rolls into a carton (Roughly 43cm\*41cm\*20cm).
- ④ Well packed and safety delivery to clients.