



**BANISTER**  
CONSTRUCTION  
FINISH AND FIXTURE CATALOG





# 01 KITCHENS





# TRADITIONAL



- **CABINET MATERIAL -**
  - Rich, deep toned mahogany wood
- **APPLIANCE MATERIAL -**
  - Stainless steel
- **COUNTER TOP MATERIAL -**
  - High durability granite counter tops
- **BACK SPLASH**
  - 3x3 Squares with 45 degree turn behind stove top that adds interest and movement
- **OTHER DESIGN CONCEPTS -**
  - Window above kitchen sink that provides natural light and a focal point
  - Inset counter top bar seamlessly integrated, ideal for casual meals and entertaining
  - Varied overhead cabinet heights that adds architectural interest
  - Crown molding enhances cabinetry and ceiling transitions
  - Decorative pendent task lighting to highlight the bar
  - 10' Ceilings for expansive vertical space and allows taller cabinetry



# ELECTRIC FARMHOUSE



## ▪ CABINET MATERIAL -

- Mahogany wood base cabinets
- Painted wood cabinets to introduce a second color under island and on side cabinets around oven and microwave

## ▪ APPLIANCE MATERIAL -

- Stainless steel
- Pot filler above stove

## ▪ COUNTER TOP MATERIAL -

- Quartz, durable and low maintenance

## ▪ BACK SPLASH -

- Subway style tile painted, echoing the blue from the cabinets

## ▪ OTHER DESIGN CONCEPTS -

- Wine storage on the side of the island that is stylish
- Barstools under island encourages casual dining
- Two-toned cabinetry
- Exposed ceiling muted to dark brown that adds a rustic texture
- Open floating shelves lightens upper cabinetry
- Pass through window to outdoor deck encouraging indoor to outdoor connection
- Ship lap side wall that adds texture
- 12' Ceilings enhancing openness and light
- Engineered white oak flooring providing a natural light tone
- Custom capped base boards adds a polished finish
- Variations of blue being carried throughout the space in cabinetry, back splash, and ship lap wall



# CRAFTSMAN STYLE



## ▪ CABINET MATERIAL -

- Lightly painted wood cabinets are used throughout
- Island cabinetry is dark stained wood to introduce depth and contrast
- Glass paneled overhead doors adding visual openness

## ▪ APPLIANCE MATERIAL -

- Stainless steel
- Induction style stove top

## ▪ COUNTER TOP MATERIAL -

- Marble, luxurious and classic

## ▪ BACK SPLASH -

- Porcelain diamond style tile in a off-white color that introduces texture and movement

## ▪ OTHER DESIGN CONCEPTS -

- Sink is located on island making it a functional work zone
- Two-toned cabinetry
- 10' Ceilings making the space feel more open
- Oil rubbed fixtures
- Candelabra style lights in pendants above island add a classic charm
- Beige walls introduce a soft warmth to the space
- Under cabinet lighting provides task and ambient lighting



# MODERN FARMHOUSE



## ▪ CABINET MATERIAL -

- Painted white overhead cabinetry
- Painted light gray island cabinetry
- X brace end panel on island adds a subtle farmhouse charm and architectural character

## ▪ APPLIANCE MATERIAL -

- Stainless steel
- 72" Fridge - 36" Fridge and 36" Freezer
- Gas Range

## ▪ COUNTER TOP MATERIAL -

- Quartz, durable and low-maintenance

## ▪ BACK SPLASH -

- White ceramic tile subway style, timeless and bright

## ▪ OTHER DESIGN CONCEPTS -

- Sink is located on island making it a central work zone
- Barstools under island encouraging gathering
- Two-toned cabinetry
- Exposed ceiling beams adding architectural richness
- Stainless steel fixtures blending seamlessly with appliances
- Wide range hood acting as a focal point



## 02 PRIMARY BATHS





# TRANSITIONAL



- **FLOORING -**
  - Porcelain tile, durable and water proof
- **VANITY -**
  - Painted wood cabinets
  - Single sink
- **COUNTER TOP MATERIAL -**
  - Marble, classic and elegant
- **SHOWER MATERIALS -**
  - Porcelain tiles on shower walls
  - Pebble tiling for shower floor adding an organic texture
- **OTHER DESIGN CONCEPTS -**
  - Walk in shower, open and accessible layout
  - Closet entrance in bathroom
  - Towel rack on back shower wall for an easy reach
  - High window in shower to allow natural light in while maintaining privacy
  - Brushed nickle fixtures, resistant to water spots



# MODERN LUXE



- **FLOORING -**

- Dark porcelain tile, sleek and durable

- **VANITY -**

- Dark painted wood cabinets, deep tones bring warmth and contrast against metallic accents

- **COUNTER TOP MATERIAL -**

- Dark marble adds luxury and texture

- **OTHER DESIGN CONCEPTS -**

- Walk in shower with glass door provides openness
- Double sink vanity for convenience and multi-user functionality
- Full length mirror on back wall
- Large silver framed mirrors above sinks balancing out the dark palette with brightness
- Stainless steel fixtures are clean, modern, and reflective
- Hanging chandeliers above sinks brings vertical visual interest
- Hanging chandelier above length mirror creates a glamorous focal point



# CLASSIC MODERN



- **VANITY -**

- Layer gray finish, wood cabinets offering texture and warmth to the space

- **COUNTER TOP MATERIAL -**

- White marble, classic and brightening

- **OTHER DESIGN CONCEPTS -**

- Double sink vanity for convenience and multi-user functionality
- Long counter top offers ample surface area
- Unique bronze framed mirrors above sinks introducing vintage character
- Stainless steel fixtures are clean, modern, and reflective
- Decorative sconce lighting in between mirrors creating symmetry and intimacy



# TRANSITIONAL



## ▪ FLOORING -

- Porcelain tile with a marble like appearance adds visual softness and elegance

## ▪ VANITY -

- Stained mahogany wood adding depth and contrast

## ▪ COUNTER TOP MATERIAL -

- Granite, durable and classic

## ▪ SHOWER MATERIALS -

- Porcelain tiles on shower walls harmonizing with the floor material
- Pebble tiling on shower floor adding organic textures
- Pebble tiling across the middle of the wall mirroring the shower floor material and adding texture

## ▪ OTHER DESIGN CONCEPTS -

- Double sink vanity for convenience and multi-user functionality
- Extra vanity on opposite side adds symmetry and more storage
- Stainless steel fixtures are clean, modern, and reflective
- Large walk in shower
- Overhead rain style shower head for full body coverage
- Adjustable wall shower head
- Half shower wall with glass paneling on top, balancing privacy and openness
- Free standing tub
- High window with glass blocks to maintain privacy while letting natural light in
- Red being introduced as an accent color through towels and rugs



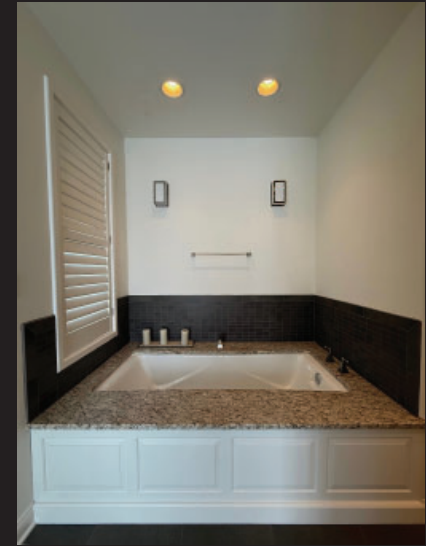
# ORGANIC MODERN



- **FLOORING -**
  - Porcelain tile, large dark tiles with light colored grout
- **VANITY -**
  - Natural cherry wood adding an organic element
- **COUNTER TOP MATERIAL -**
  - Marble elevating the design
- **SHOWER MATERIALS -**
  - Porcelain tiles on shower are subway style and light colored, lighting up the space and adding movement
  - Small square tiling on shower floor
- **OTHER DESIGN CONCEPTS -**
  - Double vessel sink vanity for convenience and multi-user functionality
  - Long counter and extra above counter cabinets for more storage
  - Stainless steel fixtures are clean, modern, and reflective
  - Large walk in shower opens up the space
  - Overhead rain style shower head for full body coverage
  - Half shower wall with glass paneling on top, balancing privacy and openness
  - Free standing tub
  - High window on wall and true dormer sky light to let in natural light and maintain privacy
  - Lower wall paneling creates a unified look with tile design
  - Shower tiling is carried through the back splash above vanity



# MID-CENTURY MODERN



- **FLOORING -**
  - Porcelain tile
- **VANITY -**
  - Painted cabinets
- **COUNTER TOP MATERIAL -**
  - Granite
- **SHOWER MATERIALS -**
  - Large porcelain tiles on walls and ceiling
  - Glass blocks
  - Small porcelain tiles on floor
- **OTHER DESIGN CONCEPTS -**
  - Wall to wall, counter to ceiling mirror in front of vanity
  - Double sink vanity for convenience and multi-user functionality
  - Long counter with both ends raised
  - Stainless steel fixtures are clean, modern, and reflective
  - Large walk in shower opens up the space
  - Granite that is used as the counter top is carried throughout the space around bathtub and entry to walk in shower
  - Glass blocks are used in the shower to allow natural light in and maintain privacy



# MODERN



- **FLOORING -**
  - Porcelain tile gray
- **VANITY -**
  - Painted gray cabinets
- **COUNTER TOP MATERIAL -**
  - Marble
- **OTHER DESIGN CONCEPTS -**
  - Chrome fixtures are clean, modern, and reflective
  - Extra vanity on opposite wall
  - Framed mirror above vanity, matching cabinet color
  - Downward sphere lights above sinks
  - Upward sconce sphere lights above vanity



# MODERN



- **FLOORING -**
  - Dark LVP brings warmth to the space
- **VANITY -**
  - Gray painted cabinets
- **COUNTER TOP MATERIAL -**
  - Granite
- **SHOWER MATERIAL -**
  - Mixed textured subway style tiles
  - Shower and tub combination
- **OTHER DESIGN CONCEPTS -**
  - Double sink vanity for convenience and multi-user functionality
  - Vessel sinks creates a design focal point
  - Stainless steel fixtures are clean, modern, and reflective
  - Minimalist glass door for shower
  - Monochromatic scheme of varying gray tones



## 03 LIVING ROOMS





# MODERN RUSTIC



## ▪ FLOORING -

- Carpet with a luxury plaid pattern introducing texture and pattern

## ▪ FIREPLACE STONE -

- Large format Brown County Stone, rugged and earthy with natural variation

## ▪ MANTLE MATERIAL -

- Stained mahogany adding contrast against the stone

## ▪ SIDE WALL MATERIAL -

- Painted wood ship lap

## ▪ OTHER DESIGN CONCEPTS -

- Exposed system ceiling opening up the space
- High narrow windows on back wall to let small amounts of natural light in while maintaining privacy
- Layered window treatments used on side windows for flexibly lighting controls
- Hanging pendant light that visually connects the ceiling height down into the space
- Raised hearth for fireplace
- Arched firebox opening with keystone providing a strong architectural focal point
- Side ship lap wall is lower than the ceiling height to define the space without fully enclosing it
- Mixed variety decorations enhances personality
- Accenting dark tones to bring the darkness of the ceiling down into the space through the pendent light and couches



# TRADITIONAL



## ▪ FLOORING -

- Gray stained wood flooring provides cool tones
- Cow hide rug that adds an organic texture

## ▪ FIREPLACE BASE STONE -

- Cast stone, tailored architectural look with clean lines

## ▪ MANTLE MATERIAL -

- Limestone, elegant and soft-toned

## ▪ OTHER DESIGN CONCEPTS -

- Exposed natural pine beam on ceiling draws the eye upward and introduces warmth
- Wall mounted sconce lighting above the fireplace highlights the stone work
- Custom decorative spindle set for stairs that introduces craftsmanship and personality
- Dark stair treads and risers with white skirt board creating high contrast on the stairs
- Natural wood table to mirror the natural pine on the ceiling and bring down balance and vertical harmony
- Painted dark ceiling
- Glass french doors on both sides of the fireplace providing symmetry and light
- Black and white color scheme used throughout the space
- Arched wood burning fireplace



# CONTEMPORARY MINIMALISM



- **FLOORING -**

- Wood flooring that is timeless
- Rug that adds layering and comfort

- **FIREPLACE STONE -**

- Porcelain tile mimicking brick that adds texture

- **MANTLE MATERIAL -**

- Dark stained wood, rich and contrasting

- **OTHER DESIGN CONCEPTS -**

- Dark stained base cabinets, to match mantle, on both sides of the fireplace, providing balance and unity
- Mirroring floating open shelving, keeping the walls open and offering display space
- Coffered ceiling drawing attention to the architecture and ceiling height
- Large side windows for natural light
- Ceiling fan for functionality
- Craftsman style wood work
- Elevated rectangular fire box remote control
- Beige walls that are soft and neutral



# MODERN FARMHOUSE



## ▪ FLOORING -

- Engineered laminate wood durable and low-maintenance
- Rug that adds layering and comfort

## ▪ FIREPLACE STONE -

- Natural fieldstone, rugged and timeless

## ▪ MANTLE MATERIAL -

- Reclaimed wood beam from original barn adding a historic touch

## ▪ ACCENT WALL MATERIAL -

- Painted board and batten adds dimension and rhythm

## ▪ OTHER DESIGN CONCEPTS -

- Coffered ceiling, elegant and structured
- Grand piano acting as a centerpiece
- Large decorative light pendant with candelabra lights adding formality and warmth
- Large side windows and glass sliding doors letting in natural light enhancing natural elements
- Sliding glass doors open the living room to back patio
- Craftsman style trim details with clean square edges
- Accent sconce lighting positioned on back wall to highlight artwork
- Frame TV that doubles as art



# MODERN LODGE



- **FLOORING -**

- Wide plank wood flooring that is rustic and grounding

- **FIREPLACE STONE -**

- Ledge stone veneer adds texture and visual movement

- **MANTLE MATERIAL -**

- Dark stained wood beam

- **CABINET MATERIAL -**

- Painted wood cabinets

- **OTHER DESIGN CONCEPTS -**

- Exposed cedar truss ceiling drawing the eye upward
- Open concept layout with living, kitchen and dining spaces
- Wood burning fireplace adds warmth and reinforces cabin atmosphere
- Large windows for natural light and enhancing natural elements
- TV placed over side cabinets keeping the fireplace the visual focal point
- Use of grays and browns tying in natural elements
- Accents of black throughout the space
- Deer head mount emphasizing focal point



## 04 DINING ROOMS





# ELECTRIC TRADITIONAL



- **FLOORING -**

- Dark wood flooring providing natural warmth
- Rug that adds layering and comfort

- **ACCENT WALL MATERIAL -**

- Brick veneer adds character and texture

- **LIGHT FIXTURE -**

- Rectangular chandelier with capiz shells, a statement piece that softens the space

- **OTHER DESIGN CONCEPTS -**

- Open floating shelves for decorating and storage
- Large windows for natural light and enhancing natural elements
- Exposed ceiling beam with dark stain adding visual structure and contrast
- Arched doorway opening to add graceful lines to balance out the rough textures in the space



# TRANSITIONAL



- **WALL PANELING -**

- Painted wood wall paneling at the base of walls that adds structure and layering to the space

- **LIGHT FIXTURE -**

- Five light chandelier with upward facing frosted glass shades, a timeless fixture for soft ambient lighting

- **OTHER DESIGN CONCEPTS -**

- Shutters are being used as window treatment adding formality and function
- Different chairs being used on table ends adds informality
- Trim at the top of the room that draws the eye upward and adds balance between the top and bottom of the room
- Crown molding enhances ceiling lines and adds architectural refinement
- Framed painting adds visual interest and personality
- Beige walls provide warmth



# MODERN ELECTRIC



- **FLOORING -**

- Grey wood flooring adding warmth

- **LIGHT FIXTURE -**

- Antler chandeliers with candelabra style bulbs provide a focal point

- **OTHER DESIGN CONCEPTS -**

- Different chairs being used on table ends introduce personality and softens formality
- Open concept dining to kitchen adds fluid visual connection
- Exposed ceiling beams adds architectural texture and rustic charm
- Modern bar chairs with clean lines
- Glass paneled cabinets add openness and display potential
- Grey ceiling to contrast with the light wood beams