

THE SOUTH COUNTY ECONOMIC DEVELOPMENT ASSOCIATION, INC. (SCEDA)

TONYA SWEAT, VICE PRESIDENT

TUESDAY, OCTOBER 27, 2020

TANTALLON NORTH CIVIC ASSOCIATION MEETING

OVERVIEW

Background on SCEDA
County Comprehensive Plan
South County Projects
Questions



BACKGROUND



Established in Prince George's County, Maryland in March 1996

501 (c)(6) organization

Provides community-based leadership and planning for economic growth and development

Development in Prince George's and Charles Counties

- areas abutting Prince George's County, such as Waldorf, LaPlata, White Plains
- Future expansion into Calvert County

SCEDA monitors

- business and contracting opportunities,
- small business utilization in the County and
- presses for increased access to opportunities for qualified Local Small and Minority-Owned businesses

BACKGROUND

South County Institute for Economic Development is the 501(c)(3) partner

- Train, educate, and mobilize support for business, entrepreneurial, and commercial activities
- Collaborate with other community-based groups to encourage direct involvement in economic empowerment activities and initiatives.



COUNTY COMPREHENSIVE PLAN

FY2021-2025 Consolidated Plan

- Estimated \$74.5 million federal entitlement funds and financing to address six priority needs over the next five years:
 1. Connections between residents and business to services
 2. Accessible homes and facilities
 3. Diverse, affordable rental and homeownership opportunities,
 4. Quality/condition of housing
 5. Housing instability among residents experiencing a housing crisis
 6. Loss of existing affordable housing opportunities

COUNTY COMPREHENSIVE PLAN



- FY2021-2025 Consolidated Plan (11 Goals)

Goal Name	Funding	Production Targets
Increase supply of affordable rental homes	HOME	260 rental units constructed**
Stabilize and improve rental properties	HOME, CDBG	105 rental units rehabilitated
Increase homeownership opportunities	HOME	300 households supported via direct financial assistance
Increase supply of accessible and affordable homes	HOME, CDBG, HOPWA	200 households served
Prevent displacement of long-term residents	HOME, CDBG, HOPWA	200 rental units rehabilitated; 115 households served
Support independent living for seniors and persons living with disabilities	HOME, CDBG	300 households served
Prevent homelessness	ESG, CDBG, HOPWA	885 persons or households supported
Increase access to job training and economic development assistance	CDBG	45 jobs created; 20 businesses assisted
Improve quality of life / livability	CDBG, HOPWA	114,000 persons assisted; 5 public facilities supported
Support high-quality public infrastructure improvement	CDBG	114,000 persons assisted
Improve communications and information-sharing	CDBG	-

COUNTY COMPREHENSIVE PLAN



- **FY2021-2025 Consolidated Plan (Funding)**

1. Community Development Block Grant:

\$5,506,859

- a. Affordable Housing: \$2,363,435
- b. Planning and Administration: \$1,030,376
- c. Public Facilities/Infrastructure: \$1,098,443
- d. Economic Development: \$162,800
- e. Public Services: \$768,413
- f. Program Income: \$83,392

2. HOME Investment Partnership Program (HOME):

\$2,855,711

- a. Program Income Activities: \$1,245,478
- b. Multifamily Rental Housing Construction & Rehabilitation program: \$1,127,163

c. CHDO Set-Aside: \$241,535

d. CHDO Operating Assistance: \$80,512

e. HOME Administration: \$161,023

3. Emergency Solutions Grant (ESG):

\$883,864

a. Emergency Shelter: \$189,522

b. Essential Services: \$52,214

c. HMIS: \$32,550

d. Rapid Re-Housing: \$73,099

e. Homelessness Prevention: \$73,099

f. HESG Administration: \$21,448

g. HESG Matching Funds: \$441,932

4. Housing Opportunities for Persons with

AIDS (HOPWA): \$2,001,848

5. Section 108 Loan Guarantee Funds

(Section 108): \$25,117,7402

COUNTY COMPREHENSIVE PLAN (PROPERTY TAXES)



Homestead Property Tax Credit Cap

- CB-48-2020 TABLED
- Would have amended Section 812, County Charter of PRINCE GEORGE'S COUNTY
- Alter the deadline to set the homestead property tax credit percentage consistent with State law
- Homestead property tax credit percentage shall be no less than 100% or exceed 110%

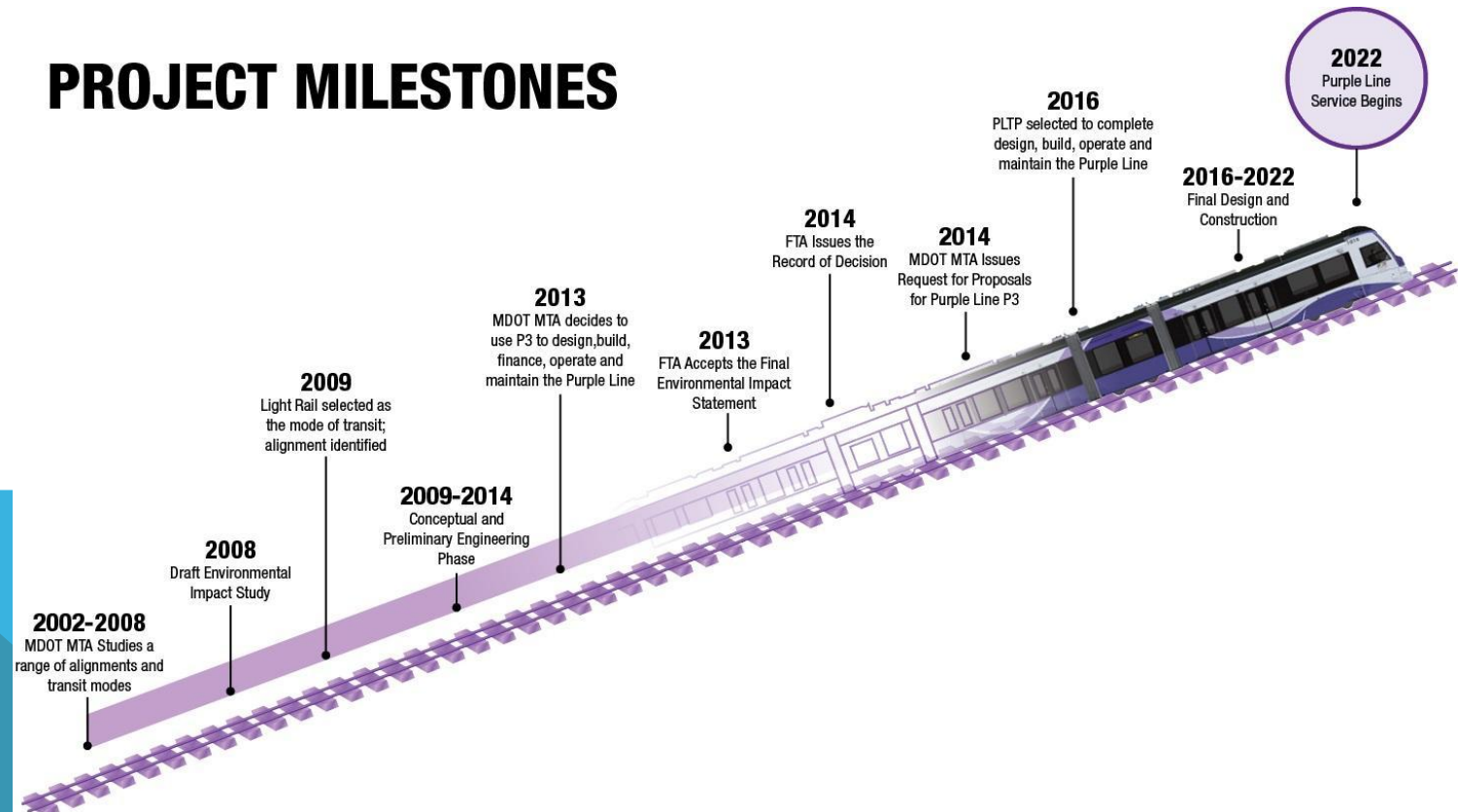
COUNTY COMPREHENSIVE PLAN (TRANSPORTATION)



Purple Line

- Construction schedule currently under review
- <https://www.purplelinemd.com/>

PROJECT MILESTONES



COUNTY COMPREHENSIVE PLAN (PGCPS)



Alternate School Construction Financing Plan

- Prince George's County Education & Community Partners approved as the preferred builder
 - Fengate Asset Management and Gilbane Development Company as developer
 - Gilbane Building Company as design-build contractor
 - Stantec as designer and architect
 - Honeywell as services provider.
- Drew-Freeman, Hyattsville, Kenmoor and Walker Mill middle schools, as well as new buildings in the Adelphi and southern areas of the county
- approximately 8,000 students
- first of its kind for a U.S. public school system
- Tantamount to a 30-year mortgage

SOUTH COUNTY PROJECTS (TRANSPORTATION)



Livingston Road and Kerby Hill Road Interchange Improvement Project

- \$117.5 million MD 210 at
- Expected finish: end of 2021
- MDOT says its 70% complete
- <https://mdot-sha-md210-intrs-at-livingston-kerb-hill-pg7005170-maryland.hub.arcgis.com/>

MD 210 (Indian Head Hwy)

- 10 miles from MD 228 to I-95/I-495
- Improve safety and address frequent traffic congestion in an environmentally sensitive manner
- Project planning completed September 2004
- Kerby Hill Road Interchange is segment 1
- Design phase for remainder on hold

<https://mdot-sha-md210-md228-to-i95-i495-pg2211116-maryland.hub.arcgis.com/>

SOUTH COUNTY PROJECTS (TRANSPORTATION)



Maryland Transportation Authority Nice-Middleton Bridge project

- Double the vehicle capacity with four 12-foot-wide lanes, replacing the old bridge's two 11-foot-wide lanes
- Improve safety by installing a barrier-separated median between east- and westbound lanes, adding two-foot shoulders and other improvements that meet current safety standards
- Eliminate lane-shifting safety issues at toll booths by replacing them with all-electronic tolling
- Enable tall ships to pass beneath its 135-foot clearance
- Construction started July 2020
- New bridge is scheduled to open early 2023
- \$463 million design-build job
- <https://mdta.maryland.gov/NiceMiddletonBridge/Home>

