



Air Seal Application Data

Project Description

Customer		
Contact		
Phone		

Pump Features

Case Split	<input type="checkbox"/> Solid	<input type="checkbox"/> Vertical	<input type="checkbox"/> Horiz
Wetted Metal Parts Material			

Fluid Characteristics

Product to be Sealed	
Concentration	
Temperature	
pH Valve	
Specific Gravity	

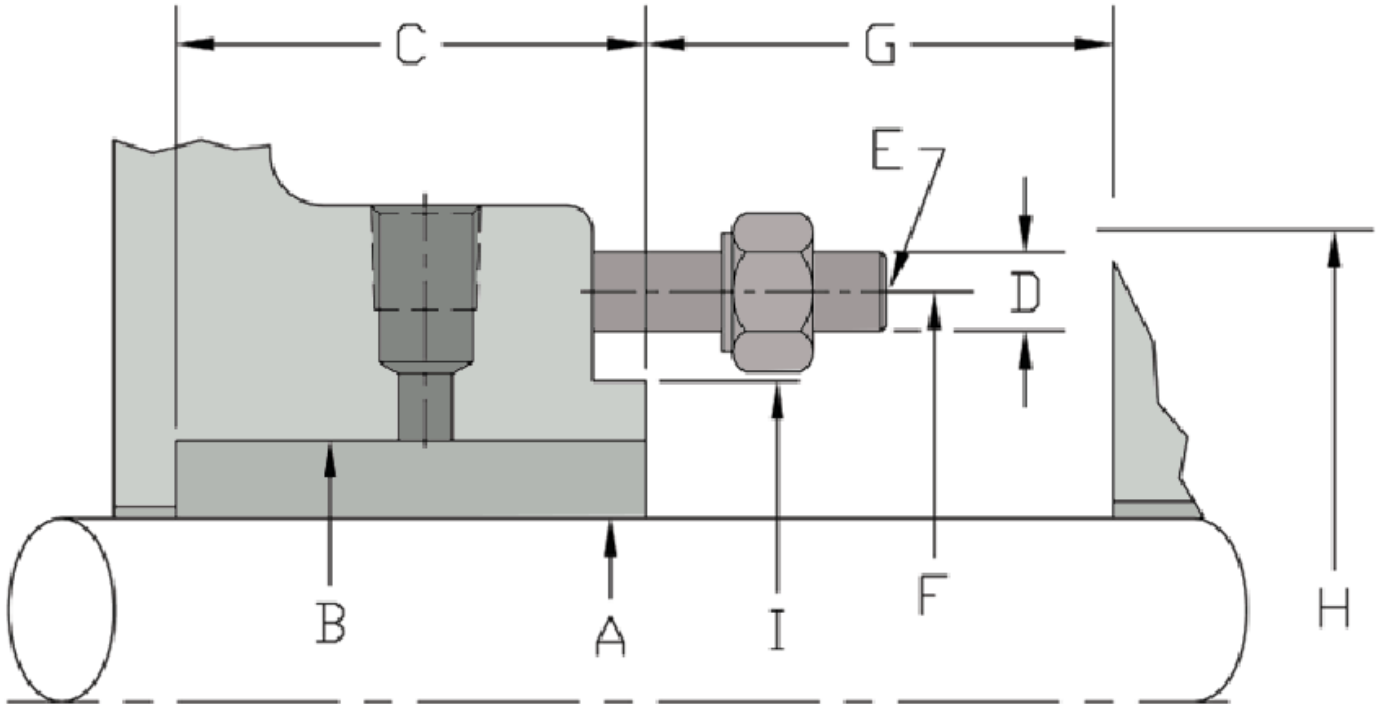
Pressures

Suction	
Discharge	
Stuffing Box	

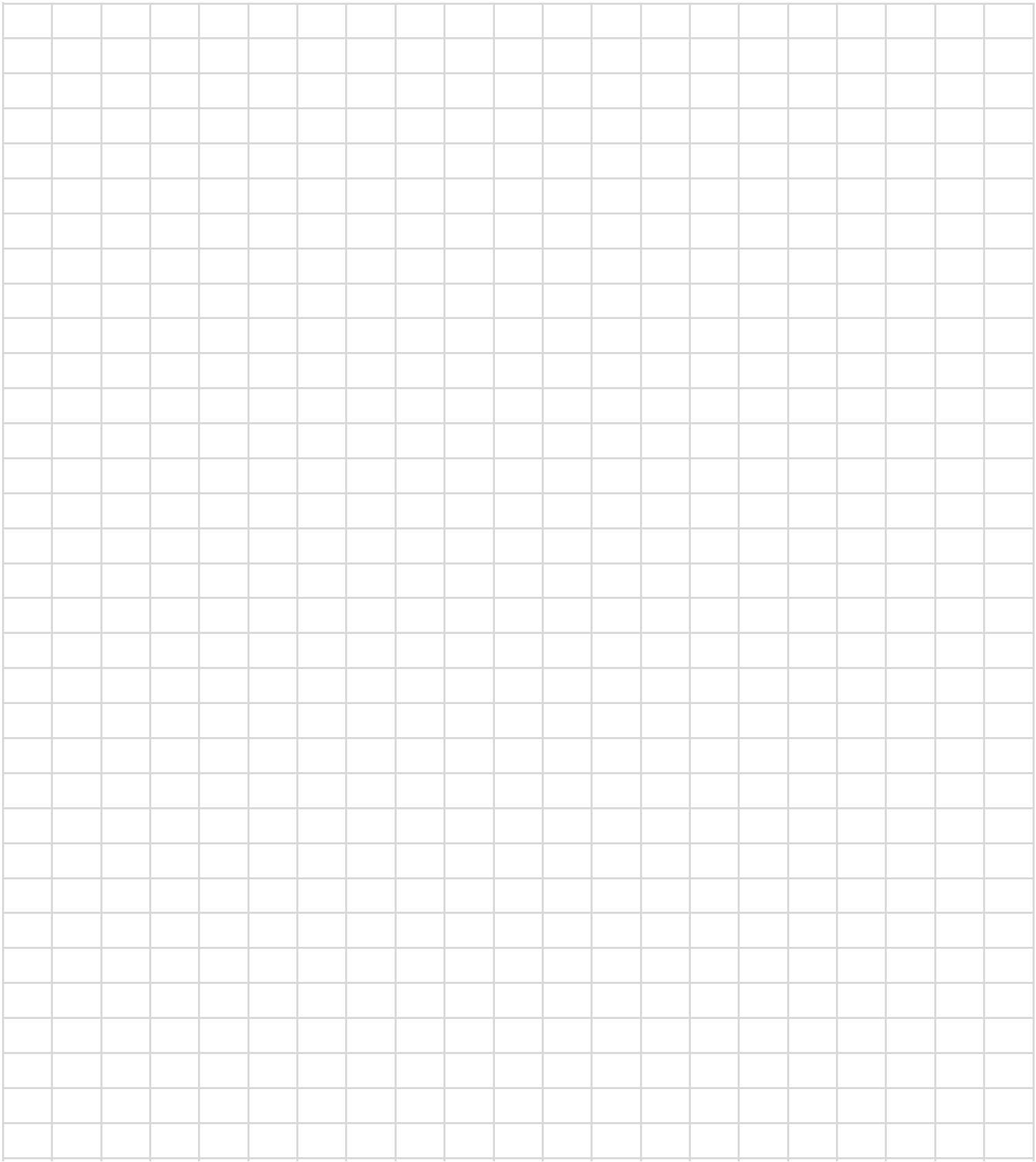
Environmental Controls	Yes	No	Pump Features	Yes	No
Clean Liquid Flush Available			Cooling Jacket on Pump		
Quench Liquid or Steam Available			Has Pump Been Altered		
Cooling Water Available			Is Service Continuous		
Is System Cleaned			With What		

Fluid Characteristics	Yes	No	Fluid Characteristics	Yes	No
Are Solids Present			Does Fluid Crystallize		
Does Fluid set Up & Harden			Is Fluid Toxic or Dangerous		
			Is Fluid Corrosive		

Air Seal Application Data



A	Shaft or Sleeve OD	
B	Stuffing Box Bore	
C	Stuffing Box Depth	
D	Stud Size	
E	Number of Studs	
F	Stud Circle Diameter	
G	Distance to First Obstruction	
H	Max OD for Round Gland	
I	Max Dimensions for Elliptical Gland	



713.725.7115

www.oneteamproducts.com

Sales Contact
Scan Code with
Smart Phone

