

OneTeam, Drilex, & Gulf South Machine (GSM) Alliance.  
Brings together precision machining and diverse products and services.



**PROVEN RELIABILITY, QUALITY AND SERVICES**

**PRECISION  
MACHINING**



**FLEXIBLE  
SOLUTIONS**

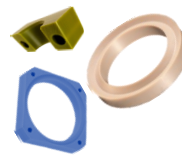
CNC Milling Centers	
Machines	12
Axis	3 / 4 / 5
Size Range X	20 to 120 Inches
Size Range Y	25 to 59 Inches
Size Range Z	20 to 47 Inches
CNC Turning Centers	
Machines	20
Axis	2 / 4
Turn Range	Up to 54 Inch
Length	Up to 50 Inch
Trepanning	
Machines	2
Size Range	12 Inch OD x 32 Feet
Other	
Bar Straightening Press	
800 Ton / 11 Inch OD / 40 Feet Long	
Support Equipment	
Drills, Saws, Grinders, Broach, Hones & CMM	

**METALS**

- Aluminum
- Stainless Steel
- Titanium
- Alloy Steel
- Inconel's
- Monel's
- Aluminum Bronze
- Aluminum Nickel Bronze
- Silicone Bronze
- Brass
- Beryllium Copper
- Kitting Assembly
- Custom Packaging
- Stocking Programs
- Traceability

**POLYMER | COMPOSITES**

OneTeam specializes in precision CNC machining of a wide array of polymers and composites to meet virtually any machining and milling requirement.



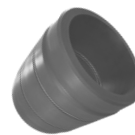
**PLASTIC**

Nylon to Peek  
Capabilities from less than .020 Inch to 110 Inch



**COMPOSITES**

Replaces Bronze  
Wear Rings | Bearings  
Wear Pads | Thrust Washers



**ELASTOMERS**

Rubber Elements and Seals made from NBR to FFKM. (HTHP and NORSOK M710 available)



**URETHANE**

OneTeam offers 140 standard seal profiles as well as unlimited special seals

713.725.7115

sales@oneteamproducts.com

www.oneteamproducts.com

