

# COYOTE

Outdoor Living



PASSION



DESIGN



VALUE

# A PASSION FOR OUTDOOR LIVING

---

In Native American legend, the Coyote brought fire to man to enrich his life. Coyote Outdoor Living is passionate about being a part of fulfilling our customers' outdoor living aspirations. Our products are designed with that goal in mind from conception, through engineering, and throughout the life of the product.

Coyote Outdoor Living believes outdoor living enriches the lives of our customers, and it is our passion to make this happen. Outdoor living can be about life on the go or the migration of the heart of the home from the inside kitchen to an outdoor entertainment oasis. Whatever outdoor living means to you, Coyote designs and builds products to complement your outdoor lifestyle.

Product performance is an extension of our passion. We believe that the preparation of food and drink brings people together, sparks creativity, and is a source for comfort and relaxation. Coyote Outdoor Living's products are designed with precision, power and durability to give you and your loved ones the space and freedom to pursue your outdoor passion to the utmost.





Outdoor living is a way of life that is about being freed from limits. For us, it is not rolled out in June and packed away in November. It is more about tearing walls down instead of building them up. Coyote is woven into your daily life through experiences in and around your outdoor haven.

Coyote Outdoor Living offers the ability to create your own outdoor kitchen and entertaining space, outside the typical boundaries and constraints of indoor kitchens. Beyond high performance grills and smokers, we offer power burners, griddle attachments, specialty grates, traditional side burners and more. Our broad array of performance cooking equipment enables the exploration of many cooking styles and all different types of cuisine. To enhance the entertainment space, Coyote delivers a terrific range of refrigeration, refreshment, and storage products, which will make the outdoor kitchen the social hub of any home.

Coyote Outdoor Living's passion is uncompromised. We only use the best materials available so that the products we create are delivering on our promise from the day they are first enjoyed and for a lifetime thereafter. Our commitment to quality and design lets you keep focused on the adventure of everyday life outdoors.



# WHO WE ARE

---

Coyote Outdoor Living's passion for design, value and the outdoor lifestyle is demonstrated in our outdoor culinary and entertainment products. We are dedicated to elevating and improving every moment spent, memory made, and bite or sip taken in outdoor spaces.

Based in Dallas, Texas, Coyote Outdoor Living specializes in the design, development, and production of high quality outdoor kitchen equipment. Coyote is committed to making outdoor kitchens an attainable reality for anyone who is passionate about cooking, entertaining or simply relaxing outdoors. We are proud to offer durable products at great values so we can enable all outdoor chefs and enthusiasts to build the outdoor kitchen of their dreams.



# THOUGHTFULLY DESIGNED

---

Coyote Outdoor Living understands the importance of delivering durable products that last a lifetime. All of our grills are built with premium grade 304 stainless steel throughout and have features such as double-walled stainless steel hoods, cast stainless steel burners and zinc nickel alloy knobs. Our specially designed firebox combined with our professional burner system delivers a perfect, even cooking experience every time.

## We also know that performance can look good...

Coyote Outdoor Living products are designed with a strict attention to consistency and aesthetics. Having a tremendous range of products to allow for the most custom of outdoor spaces loses appeal if the products fail to tie the space together with a consistent design aesthetic.



## All of our grills feature:

- Complete 304 stainless steel construction, including:
  - Cast stainless steel burners, grates and component parts
  - Double walled, stainless steel hood
  - Continuous weld on the grill box with seamless edges
- Interior grill lighting
- Heat Control Grids™
- Limited lifetime warranty on burners and stainless steel exterior
- Independent burner ignition system

# AN UNCOMPROMISED DREAM

---

At Coyote Outdoor Living, we believe that our customers should never compromise their outdoor living experience. With our best-in-class features, high quality materials and construction at an attainable price, they will not have to.

Even the most discerning outdoor culinary artist will be impressed with the power and efficiency of our Coyote Infinity Burners™ and Coyote I-Burners™. Coyote Outdoor's RapidSear™ burner will give the best steakhouse a run for its money for intense searing of steaks and seafood. Cooking at night? Standard interior lighting on all models will mean great results every time.

Value does not end with the products themselves. Coyote Outdoor Living prides itself on our customer service. We care - in word and deed. Our products not only have great price points but also are covered by a comprehensive warranty to ensure your experience is what you want and more. Our customers will not have to compromise desired features and benefits, or cooking performance and product longevity because of a price point.









# OUTDOOR CULINARY EXCELLENCE

---

While outdoor living spaces are as unique as the people who create them, the centerpiece of many outdoor spaces is the grill. At Coyote Outdoor Living, we understand that grills can be as different as the cooking needs and desires of the outdoor chef that is using them. We are proud of the great breadth of our product lineup of cooking equipment. Coyote offers a wide range of sizes and types of traditional grills, innovative combination fuel grills, versatile power burners and side burners, precision smokers, and more.





# C-SERIES GRILLS

---

Coyote Outdoor Living's C-Series grills are built to suit grillers of all types. Measuring a compact 28", Coyote's C1C28 model is the ideal appliance for small spaces, urban living and unparalleled convenience and portability (see our pre-assembled cart 28" cart model). For homeowners with more space, Coyote's C1C36 is a terrific option, providing an ample 875 sq. in. of grilling space and featuring four high performance Coyote cast stainless steel I-Burners™. All of our C-Series grills come standard with interior lighting for day or nighttime outdoor culinary pursuits.



## C1C28

### EXCLUSIVE FEATURES

- Two high performance Coyote Infinity Burners™
- 640 sq. in. cooking area
- Up to 40,000 BTU
- Interior grill lighting
- 304 stainless steel



## C1C34

### EXCLUSIVE FEATURES

- Three cast high performance I-Burners™
- 780 sq. in. cooking area
- Up to 60,000 BTU
- Interior grill lighting
- 304 stainless steel



## C1C36

### EXCLUSIVE FEATURES

- Four cast high performance I-Burners™
- 875 sq. in. cooking area
- Up to 80,000 BTU
- Interior grill lighting
- 304 stainless steel

# S-SERIES GRILLS

---

The S-Series from Coyote Outdoor Living aspires to exceed the highest standards. This grill series, available in a 36" or a 42" size, offers various luxury items standard on every grill such as the Coyote cast stainless steel Infinity Burners™, a rotisserie with an infrared burner, smoker box, and RapidSear™ burners to help lock in natural juices and nutrients. Knobs backlit with LED lighting offer a great assist in nighttime cooking... and an impressive aesthetic.

Coyote's C1SL42 grill can fulfill the needs of even the most demanding outdoor gourmet chef. The grill features four cast stainless Coyote Infinity Burners™ plus a rear infrared burner and one RapidSear™ burner – all working together to produce up to 110,000 BTUs of power in a precision engineered firebox with 1,275 sq. in. of cooking area.



## C1SL36

### *EXCLUSIVE FEATURES*

---

- Three high performance Coyote Infinity Burners™, plus one infrared rear burner, plus one Coyote RapidSear™ infrared burner
- 875 sq. in. cooking area
- Up to 90,000 BTU
- 304 stainless steel
- Interior grill lighting
- LED illuminated knobs



## C1SL42

### *EXCLUSIVE FEATURES*

---

- Four high performance Coyote Infinity Burners™, plus one infrared rear burner, plus one Coyote RapidSear™ infrared burner
- 1275 sq. in. cooking area
- Up to 110,000 BTU
- 304 stainless steel
- Interior grill lighting
- LED illuminated knobs









# CHARCOAL GRILLS

---

Many outdoor cooking enthusiasts appreciate how charcoal grilling and smoking can almost seem poetic... the slow cooking, the importance of precision temperature control, the natural smells; the style is truly a culinary art form. Coyote Outdoor Living's charcoal grills and smokers bring our promise of passion, design and value to this art form.



## C1HY50 HYBRID

---

### ***GAS GRILL***

- Two high performance Coyote I-Burners™
- Over 600 sq. in. cooking area
- Up to 40,000 BTU
- Interior grill lighting

### ***CHARCOAL GRILL***

- Adjustable fuel tray
- Over 600 sq. in. cooking area
- For use with charcoal or wood chips
- Adjustable dampers for controlling air flow
- Coyote Lump charcoal available (model no. CLMP)



## C1CH36 DROP-IN CHARCOAL GRILL

---

- Over 875 sq. in. cooking area
- For use with charcoal or wood chips
- Adjustable fuel tray
- Adjustable dampers for controlling air flow
- Coyote Lump charcoal available (model no. CLMP)







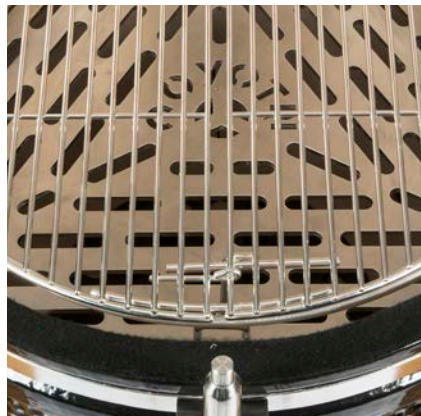
# ASADO COOKER

---

Ceramic cookers have been a staple in cooking for thousands of years. In fact, archaeologists have discovered 4,000 year old large, clay vessels which were thought to be early incarnations of the modern day ceramic cooker. Initially utilized as a smoker or a rice steamer, this cooking appliance has evolved in both fuel source (from wood to lump charcoal for evenness of heat distribution) and in improvements in the cooking apparatus itself (slider draft doors and cap to control temperature and improve venting).

Coyote Outdoor's Asado Cooker is an extremely versatile outdoor appliance and will add value and enjoyment to every outdoor living experience. Not only can it be used for grilling, but also in baking pizzas and breads; smoking large cuts of meat at slow temperatures, as well as searing vegetables and fish with temperature controlled perfection. Due to the Asado's excellent heat retention properties, varied desired temperatures can be achieved and maintained by precise control of airflow via the top venting cap and the bottom slide vents. This coupled with the design of the internal core of the Asado and our specially designed laser cut grates will allow for easy high temperature cooking for items such as hamburgers or sausages or lower, slower temperature needs for items like lamb shoulder or slow cooked pork.

Coyote offers its own lump charcoal as well as a robust set of accessories to make your Asado Cooker a must have appliance for any outdoor kitchen design.





# ASADO COOKER - ACCESSORIES



## **C1CHCS** **ASADO COOKER**

- Coyote laser cut Signature Cooking Grate™
- Heat-resistant ceramic construction
- 254 sq. in. of cooking area
- Adjustable venting to maintain precise cooking temperatures
- Smoke, sear, grill option
- Optional cart with side shelves (model no. C1CHCS-FS)
- Coyote Lump charcoal available (model no. CLMP)



### **Pizza Stone**

ASADO-PS

Essential accessory for evenly cooking crispy pizzas, flatbreads and other delights outdoor culinary delights



### **Asado Heat Deflector**

ASADO-HD

Enjoy cooking without open flame by evenly distributing heat across the grids



### **Chicken Throne**

ASADO-CT

Marinade infusion tool for great tasting chicken or turkey



### **Grate Grippers**

ASADO-GG

Allows you to lift the pizza stone or cooking grids when they are too hot to handle.



### **Asado Cover**

ASADO-CVR

When the Asado has cooled and is not in use, cover it with an Asado rain cover for extra protection.

*Accessories can also be purchased as a bundle (model no. ASADO-ACC)*



# ELECTRIC GRILL

---



# ELECTRIC GRILL - ACCESSORIES

---

Design and value are at the heart of Coyote Outdoor Living, our passion is to elevate the outdoor living experience with a selection of products that marry power and durability with style. The introduction of the new Electric Grill expands the category to allow urban apartment dwellers, and those who have downsized with limited outdoor space, to recreate the nostalgic enjoyment of backyard barbeques with family and friends.

For Coyote, outdoor living is a way of life that is about being freed from limits of space or season. Because it is not rolled out in June and packed away in November, Coyote becomes an integral part of your daily life through the joy of entertaining outdoors. The Electric Grill has a sleek, attractive silhouette and may be conveniently placed on a table, pedestal stand or built into an island or cabinet of your choice.



## **C1EL120SM** **ELECTRIC GRILL**

---

- One sku for Portable, Built-In or Pedestal version
- Removable frame for built-in application
- Pedestal Stand available (C1ELCT21)
- Cover & 2 Piece Tool Set Included
- Teflon coated cooking surface
- Ceramic flavorizer
- 156 sq. in. cooking area
- 5,000 hour heating element
- 304 stainless steel
- 550° F maximum temperature
- 60 minute safety timer with surge protector
- 120V - 1300W - 11A - 60 Hz

# SPECIALTY BURNERS & ACCESSORIES

---

The kitchen is a place for culinary exploration, and an outdoor kitchen should be no different. Outdoor cooking has moved beyond traditional hotdog and hamburger fare. With Coyote Outdoor Living's assortment of specialty grilling appliances you can create a unique kitchen full of options or one focused to suit your specific cooking style or specialty.





# SPECIALTY BURNERS

---

The Coyote Power Burner presents spectacular versatility. Want to enjoy international flavors? Add our Teppanyaki griddle for enhanced food flavors. Alternatively, add on the wok attachment to create one-pan dishes with flair. Want to prepare your world famous sauce? The Coyote Power Burner can simmer at a gentle 1,000 BTUs. Want to have a crawfish or lobster boil? The Coyote Power Burner will really cook with 60,000 BTUs of cooking muscle. Whatever your cooking desires, simple or complex, Coyote Outdoor Living has the accessory to make them a reality.



## SINGLE SIDE BURNER

Model No. C1SB (LP / NG)

- (1) 15,000 BTU brass burner
- Stainless steel lid included



## DUAL SIDE BURNER

Model No. C1DB (LP / NG)

- (2) 15,000 BTU brass burners
- Stainless steel lid included



## POWER BURNER

Model No. C1PB (LP / NG)

- Dual-valve burner with up to 60K BTU output
- Stainless steel lid included
- Simmer performance at 1K BTU
- Teppanyaki/wok optional

# ACCESSORIES

---

Now you can make cooking on your Coyote grill even more enjoyable with innovative accessories meant to enrich your outdoor cooking experience. In true form to our passion, Coyote Outdoor Living has created accessories from drop-in griddles to revolutionary charcoal tray inserts that combine the best of both worlds in a single grill box.



## DROP-IN GRIDDLE

Model No. C1GRDL



## TEPPANYAKI

Model No. CTEP



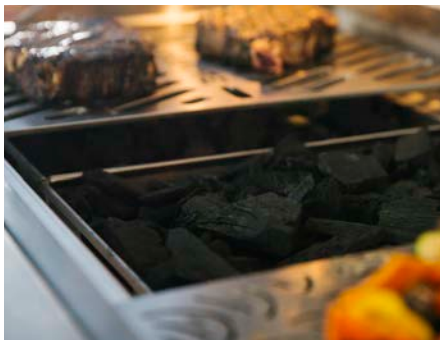
## WOK

Model No. CWOK



## CHARCOAL TRAY

Model No. CCHTRAY15



# FROM GOOD TO GRATE

---

Our Signature Grill Grates™ are specifically engineered, and individually laser-cut to provide the right combination of surface area, airflow, and heat penetration to grill almost any dish to perfection. With the beef grate, grill aficionados can achieve perfect grill marks and retain delicious juices and flavors. Grates designed for cooking chicken specialize in preventing charred outsides and undercooked insides. The specially designed fish and vegetable grate allow the most delicate ingredients to be grilled without falling through the grates or overcooking.

However you cut it, you are cooking with style with Coyote Outdoor Living.



Model No. CSIGRATE (-15 or -12)



# REFRIGERATION & REFRESHMENT

---

For some, entertaining capability is the true centerpiece to their outdoor living space. Coyote Outdoor Living offers a one-stop-shop to supply the ultimate outdoor entertainer – including a full refreshment center complete with cooler, sink, condiment tray, cutting board, towel holder, and bottle opener.

Keeping your drinks cold and your food fresh is no problem for Coyote Outdoor Living's outdoor refrigeration products. Coyote's Outdoor Refrigerator performs as great as it looks. Having a refrigerator as part of your space can also reduce the need to go back and forth from an indoor kitchen – meaning more time to enjoy the outdoors with your family and friends.

Prefer to keep your wine and oysters on ice? Coyote's Drop-In Cooler or full extension Pull-Out Cooler are ideal with built-in drains for easy cleanup.





## 24" OUTDOOR REFRIGERATOR

Model No. C1BIR24-L / C1BIR24-R

- Outdoor rated, free-standing refrigerator with lock
- Automatic defrost
- Stainless steel cabinet construction; graphite interior
- Capacity of 5.5 cubic feet
- Interior light and adjustable digital thermostat
- Front vented for built-in application
- Hidden hinge with left or right swing



## PULL OUT ICE CHEST

Model No. CPOC

- Removable condiment trays
- Drain hole with plug included
- Capacity of 3.8 cubic feet



## 21" OUTDOOR REFRIGERATOR

Model No. CBIR-L / CBIR-R

- Outdoor rated, free-standing refrigerator
- Automatic defrost
- Stainless steel cabinet construction; white interior
- Capacity of 4.1 cubic feet
- Interior light and adjustable manual thermostat
- Front vented for built-in application
- Left or right hinge swing



## DROP-IN COOLER

Model No. CDIC

- Drops into countertop for easy access
- Fully insulated
- Drain hole with plug included



## REFRESHMENT CENTER

Model No. CRC

- 30" Overall Width
- Includes drop in cooler with drain
- Removable condiment tray insert for drop in cooler
- Convenient bottle shelf, towel holder and bottle opener
- Cutting board accessory for sink



## SINK

Model No. C1SINK

- Universal Mount
- 304 Stainless Steel
- 16" W x 18" D
- Drain & Strainer Included



# THE GREAT OUTDOORS

---

More than ever before, families and friends are taking to the outdoors to live life to the fullest. The heart of the home for many is moving from the indoor kitchen to the outdoor kitchen. Coyote Outdoor Living is passionate about being a part of that journey with you.

Your outdoor kitchen is meant to be a reflection of your personal tastes, and can be complete with consistently designed access doors and storage solutions. Coyote Outdoor Living produces a broad range of storage and cabinet solutions to make your customized space the perfect marriage of form and function. There are many options to choose from, providing your long-lasting investment with additional value to both your living experience and your property itself.



## SINGLE ACCESS DOORS

---



**17" x 24" SINGLE  
ACCESS DOOR**  
Model No. CSA1724



**24" x 17" SINGLE  
ACCESS DOOR**  
Model No. CSA2417



**14" x 20" SINGLE  
ACCESS DOOR**  
Model No. CSA1420



**20" x 14" SINGLE  
ACCESS DOOR**  
Model No. CSA2014

## DOUBLE ACCESS DOORS

---



**26" DOUBLE  
ACCESS DOORS**  
Model No. CDA2426



**31" DOUBLE  
ACCESS DOORS**  
Model No. CDA2431



**39" DOUBLE  
ACCESS DOORS**  
Model No. CDA2439

# STORAGE DRAWERS/WARMING DRAWER

---



**30" SINGLE  
STORAGE DRAWER**

Model No. CSSD



**PAPER TOWEL  
HOLDER**

Model No. CPTH



**30" WARMING DRAWER**

Model No. CWD

- Outdoor-rated
- ETL certified
- Internal electric heating element
- 30" overall width



**TWO-DRAWER  
CABINET**

Model No. C2DC



**THREE-DRAWER  
CABINET**

Model No. C3DC



**PULLOUT DRAWER**

Model No. CPOD

- Holds standard propane tank



# COMBINATION STORAGE

---



**45" COMBO  
DRAWERS**

Model No. CCD-POD



**45" COMBO  
DRAWERS**

Model No. CCD-2DC



**42" COMBO  
DRAWERS**

Model No. CCD-WD



**31" SINGLE DOOR  
AND 2 DRAWERS**

Model No. CCD-2DC31



**31" DRY PANTRY  
WITH DRAWERS**

Model No. CDPC31



**14" SINGLE  
PULL OUT  
TRASH AND  
RECYCLE**

Model No. CSTC



**27" DUAL  
PULL OUT  
TRASH AND  
RECYCLE**

Model No. CTC

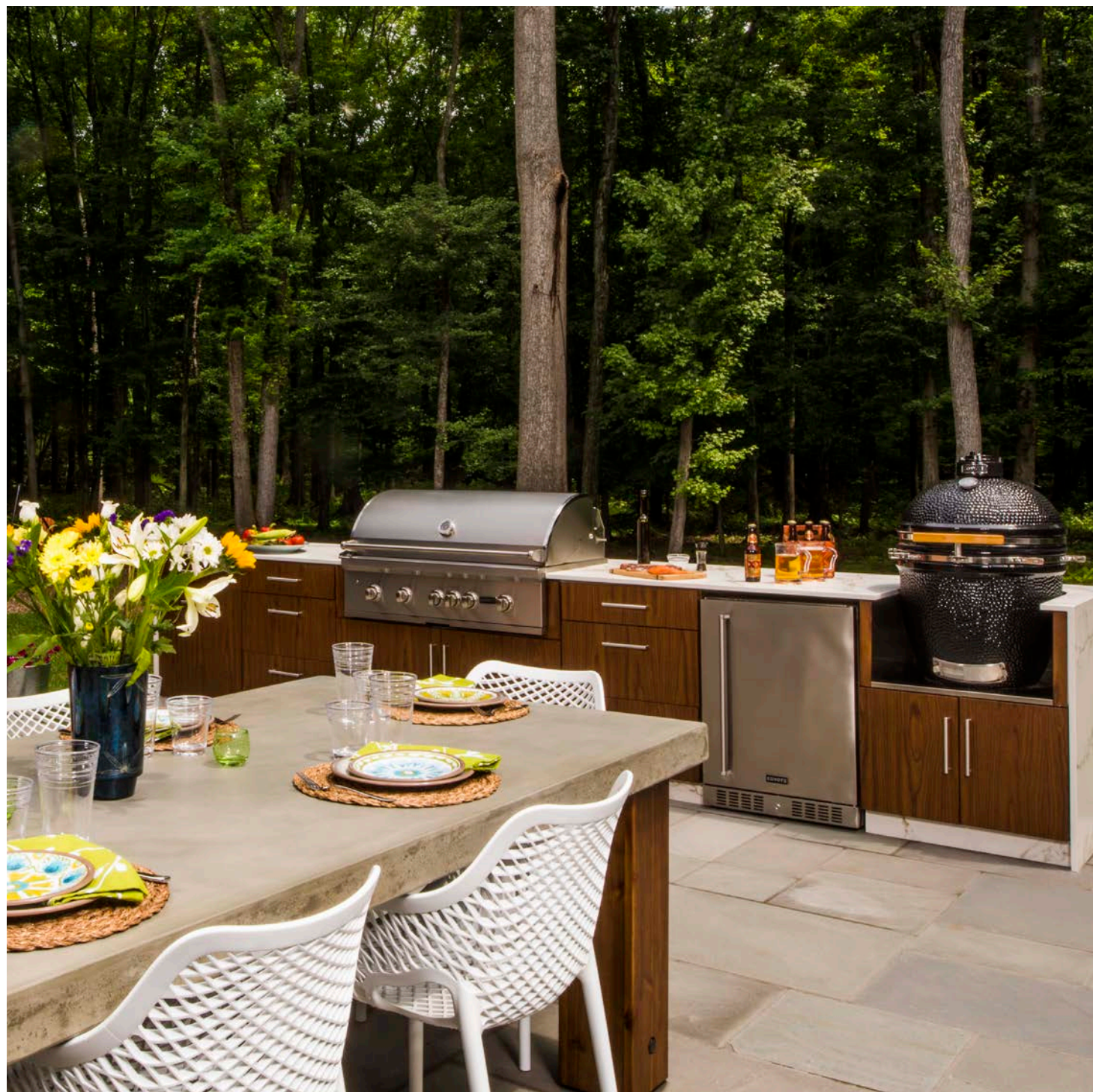
# INSTALLATION

---

Coyote Outdoor Living products come complete with comprehensive instructions and all parts included, ready for easy assembly so you can get to outdoor living quickly. Many of Coyote's products come pre-assembled and ready to install, but if you have any questions, we invite you to take advantage of our world class customer support organization, which is on always ready to assist you whether it's advising on how many outlets are needed, locating dimensional specifications or ensuring a perfect product installation. You can also connect with us via social media to share in our favorite ways to experience Coyote Outdoor Living!



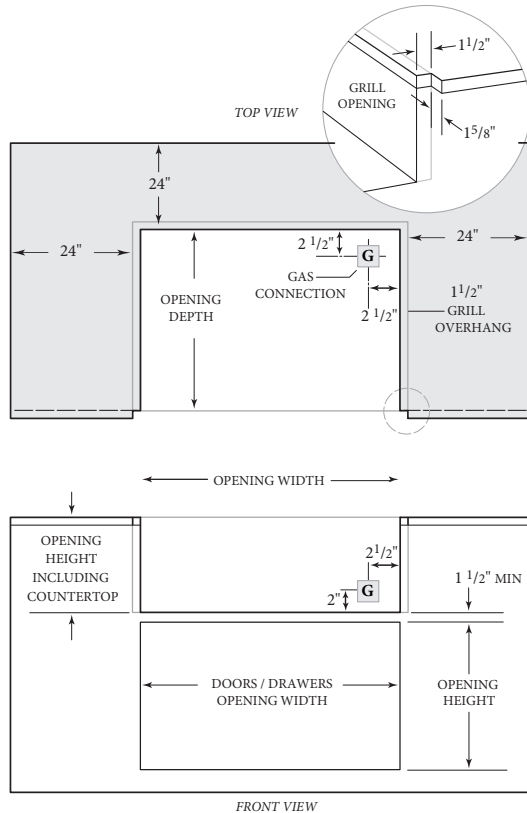






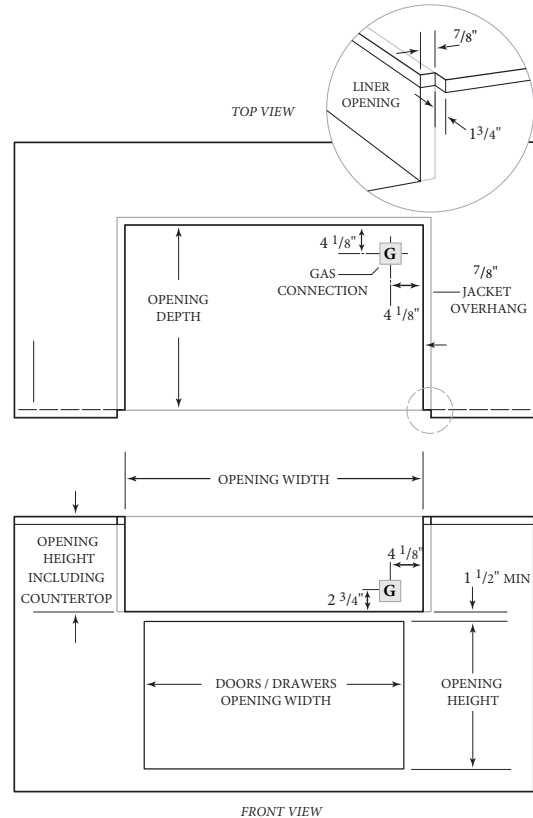
# DIMENSIONS & SPECIFICATIONS

## NON-COMBUSTIBLE - CUTOUT DIMENSIONS Insulated Jacket NOT Required



- ✓ Combustible material can not be within 24" of the grills frame
- ✓ This applies to all directions - horizontal & vertical
- ✓ Shaded area above on "TOP VIEW" illustrates the 24" minimum requirement (not to scale for rendering purposes)
- ✓ The grill is designed to hang from the counter top with no support underneath
- ✓ Minimum rear clearance for the hood to open is 2"
- ✓ If you have a wall/partition behind the grill, the minimum rear clearance to that wall should be at least 7" to allow for ventilation of the exhaust

## COMBUSTIBLE - CUTOUT DIMENSIONS Insulated Jacket Required



- ✓ If using combustible material within 24" of the grill frame, you MUST use the corresponding Coyote Insulated Jacket
- ✓ Using an insulated jacket, does not waive any other standard installation procedure (ventilation, connections, etc)
- ✓ The jacket is designed to hang from the counter top with no support underneath
- ✓ Minimum clearance for hood to open is 2"
- ✓ If you have a wall/partition behind the grill, the minimum rear clearance to that wall should be at least 7" to allow for ventilation of the exhaust

**Important Note to Installer:** This file is not intended to replace your Owners' Manual which contains specific safety requirements and consumer guidelines. Please refer to your Owners' Manual prior to installing or operating your built-in grill.

Model	Product Description	Cutout Dimensions			Overall Dimensions			Total BTU Ratings		Electrical Requirements
Grills		Height	Width	Depth	Height	Width	Depth	LP	NG	120 VAC
CC(X)2 / C1C28	28" Grill w/ Hood Lights	10 1/4"	25"	20 1/2"	23"	28"	25 1/2"	40,000	40,000	Qty 1
CC(X)3 / C1C34	34" Grill w/ Hood Lights	10 1/4"	31"	20 1/2"	23"	34"	25 1/2"	60,000	60,000	Qty 1
CCX4 / C1C36	36" Grill w/ Hood Lights	10 1/4"	32 1/2"	20 1/2"	23"	35 1/2"	25 1/2"	80,000	80,000	Qty 1
CS(X)36 / C1S36	36" Grill w/ Hood Lights & Rotis	10 1/4"	32 1/2"	20 1/2"	23"	35 1/2"	25 1/2"	90,000	90,000	Qty 1
CSL(X)36 / C1SL36	36" Grill w/ Hood & LED Lights	10 1/4"	32 1/2"	20 1/2"	23"	35 1/2"	25 1/2"	90,000	90,000	Qty 1
CSL(X)42 / C1SL42	42" Grill w/ Hood & LED Lights	10 1/4"	39 1/2"	20 1/2"	23"	42 1/2"	25 1/2"	110,000	110,000	Qty 1
CH(X)50 / C1HY50	50" Hybrid Grill w/ Hood Lights	12 1/2"	47 3/4"	20 1/2"	25 1/4"	50"	25 1/2"	40,000	40,000	Qty 1
C1CH36	36" Charcoal Grill	12 1/2"	32 1/2"	20 1/2"	25 1/4"	35 1/2"	25 1/2"	N/A		Qty 1
C1CHCS	Asado Smoker	17"	22 1/2"	22 1/2"	34"	22 1/4"	22 1/4"	N/A		None
C1EL120SM	Electric Grill Manual Control	3 3/8"	16"	15"	11 3/8"	18 1/8"	16 1/4"	120V 1300W 6A		Qty 1
Side Burners		Height	Width	Depth	Height	Width	Depth	LP	NG	120 VAC
CSSB(X) / C1SB	Coyote Single Side Burner	10 1/4"	10 1/8"	13 5/8"	13"	11 3/8"	17"	15,000	15,000	None
CDSB(X) / C1DB	Coyote Dual Side Burner	10 1/4"	11 7/8"	20 1/4"	13"	13 1/8"	23 1/4"	30,000	30,000	None
CPB / C1PB	Coyote Power Burner	10 1/4"	21"	21"	13"	24"	24 1/4"	60,000	60,000	None
Insulated Jackets		Height	Width	Depth	Height	Width	Depth	Notes		
CJAKTCC2	Insulated Jacket for 28" Grills	11"	28 1/4"	22 1/8"	11"	30 1/8"	23"	For Combustible Construction		
CJAKTCC3	Insulated Jacket for 34" Grills	11"	34 1/4"	22 1/8"	11"	36 1/8"	23"	For Combustible Construction		
CJAKTCS36	Insulated Jacket for 36" Grills	11"	35 3/4"	22 1/8"	11"	37 5/8"	23"	For Combustible Construction		
CJAKTCS42	Insulated Jacket for 42" Grills	11"	42 1/4"	22 1/8"	11"	44 1/8"	23"	For Combustible Construction		
Access Doors		Height	Width	Depth	Height	Width	Depth	Notes		
CDA2426	26" Double Access Door	20 1/2"	20 3/4"	2"	24"	24 1/4"	3"	N/A		
CDA2431	31" Double Access Door	20 1/2"	26 1/2"	2"	24"	30"	3"	N/A		
CDA2439	39" Double Access Door	20 1/2"	34 1/2"	2"	24"	38"	3"	N/A		
CSA2014	Single Access Door 20" x 14"	20 1/2"	14 1/2"	2"	22"	16"	3"	N/A		
CSA1420	Single Access Door 14" x 20"	14 1/2"	20 1/2"	2"	16"	22"	3"	N/A		
CSA2417	Single Access Door 24" x 17"	24 1/2"	17 1/2"	2"	26"	19"	3"	N/A		
CSA1724	Single Access Door 17" x 24"	17 1/2"	24 1/2"	2"	19"	26"	3"	N/A		
Drawers		Height	Width	Depth	Height	Width	Depth	Notes		
C2DC	2 Drawer Cabinet	20 1/2"	14 1/2"	17 1/2"	22"	16 1/4"	18"	N/A		
C3DC	3 Drawer Cabinet	24 1/2"	16 3/4"	17 1/4"	26"	18 1/2"	18"	N/A		
CSSD	Single Storage Drawer	13 1/2"	31 1/2"	20 1/2"	15"	32 1/2"	21 1/4"	N/A		
CDPC31	31" Dry Pantry	20 1/2"	26 1/2"	23"	24"	30"	24"	N/A		
CTC	Dual Pull Out Trash & Recycle	23 7/8"	23 3/4"	18"	26 1/4"	26 3/4"	19"	N/A		
CSTC	Single Pull Out Trash & Recycle	23 7/8"	11 3/8"	18"	26 1/4"	14 3/8"	18 7/8"	N/A		
CPOD	LP Tank or Trash Drawer	20 1/2"	14 1/4"	17 1/2"	22"	15 1/2"	18"	N/A		
CPTH	Paper Towel Holder	8 1/4"	13 1/2"	8"	10"	15"	9"	N/A		
CWD	Warming Drawer	9 1/2"	28 1/4"	23 1/2"	10 3/4"	29 1/2"	26 3/4"	N/A		
Combo Drawers		Height	Width	Depth	Height	Width	Depth	Notes		
CCD-2DC	Double Drawer Combo	20 1/4"	43 3/8"	17 1/8"	24 1/8"	45 1/4"	18 3/8"	N/A		
CCD-2DC31	31" Double Drawer Combo	20 1/2"	26 1/2"	20 1/8"	24"	30"	21 1/8"	N/A		
CCD-POD	Pull Out Drawer Combo	20 3/8"	43 3/8"	16 1/4"	24 1/8"	45 1/4"	17 1/2"	N/A		
CCD-WD	Warming Drawer Combo	19 1/2"	40 5/8"	25 1/4"	20 3/4"	42 1/8"	26 1/2"	Qty 1 Plug Needed - unit is 450 Watt		
Refrigeration & Refreshment Centers		Height	Width	Depth	Height	Width	Depth	Notes		
CBIR	4.1 Outdoor Refrigerator	34"	20 3/4"	23"	33 3/4"	20 1/2"	22 3/4"	Qty 1 Plug Needed - Vented Bottom Front		
C1BIR24	5.5 Outdoor Refrigerator	33 1/4"	23 3/4"	22 3/4"	33"	23 1/2"	22 1/2"	Qty 1 Plug Needed - Vented Bottom Front		
CDIC	Drop In Cooler	12"	23 1/4"	17 1/4"	15"	24 1/2"	18"	Can be turned in either direction		
CPOC	Pull Out Ice Chest	17 1/2"	23 3/4"	24 3/4"	20 1/2"	26 3/4"	25 1/2"	N/A		
C1SINK1618	Sink - Universal Mount	13"	14 3/4"	17 1/8"	13"	15 3/4"	17 3/4"	Includes drain but no faucet		
CRC	Refreshment Center	10"	29 1/4"	22 3/4"	10 3/4"	30 1/4"	29"	Drain Hose Included		



[www.coyoteoutdoor.com](http://www.coyoteoutdoor.com)