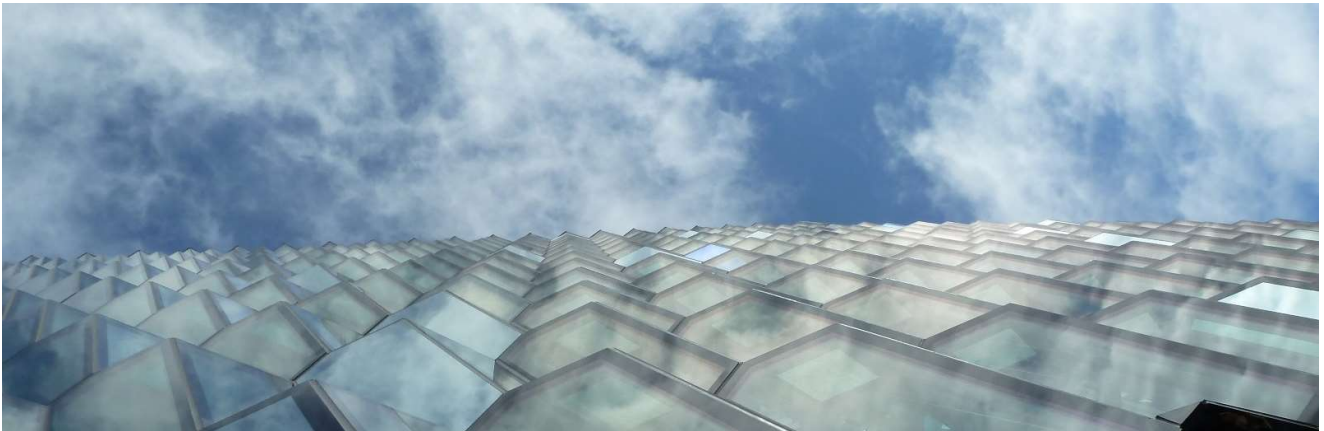


MEP Sustainability Consultant



HENRIKSEN STUDIO LTD

Company Registration No: 12274442. Registered Office: 25 Green Lane, Crawley, Surrey, HA6 2UZ, United Kingdom.

JOB TITLE	MEP Sustainability Consultant
REPORTING TO	Director
CONTRACT TYPE	Permanent, full-time
SALARY	Competitive

ABOUT HENRIKSEN STUDIO

Henriksen Studio is a fast-growing facade engineering and Passivhaus design consultancy, delivering innovative solutions using the latest facade technologies. Our work includes combining facade engineering with Passivhaus design to achieve industry leading energy efficiency for high-rise buildings.

OUR PHILOSOPHY

To help build beautiful, progressive buildings that meet today's demands for a sustainable future, with a clear focus on meeting net zero carbon targets.

OUR MISSION

To work collaboratively with clients to deliver cost effective, unique, and attractive solutions to complex design challenges.

JOB DESCRIPTION

Henriksen Studio is seeking a London-based sustainability consultant with experience in MEP and energy performance assessments to work closely within our founding team of leading facade design and engineering professionals.

We are currently working on two of Europe's largest Passivhaus projects, supporting design teams to deliver innovative energy efficient buildings at a large scale. We are also in an exciting phase of developing our net zero strategy and working on high-rise retrofit schemes.

We are looking for someone who can work with our experienced MEP Passivhaus expert on the design and delivery of Passivhaus and Net Zero projects. You will have a firm grasp of building physics and MEP concepts, be passionate about sustainability, have excellent attention to detail and are happy to muck-in with all tasks big and small. As a small firm we need proactive, passionate people who would be excited to help grow our firm. This role has the opportunity to develop into a leadership role in the future.

The company is based in London, but hybrid working is embraced.

MAIN DUTIES AND RESPONSIBILITIES

- Building performance planning and assessment using Passivhaus PHPP software for numerous large-scale projects with a focus on MEP and building physics;
- Create high-quality technical reports
- Support MEP design teams and Contractors to deliver Passivhaus projects;
- Communicate building performance critical issues and manage design change in the performance model ;
- Review MEP technical drawings, models and reports from design consultants and contractors such as mechanical pipework, ventilation, lighting, power and drainage for compliance with the performance model
- Critical evaluation and refinement of all aspects of building and MEP design
- Undertake site inspections of MEP installations and collect evidence for Passivhaus certification
- Communication of the assessment progress to clients and provide ways to improve design
- Develop MEP strategies for new projects that support Passivhaus and Net-zero performance
- Work on new-build and retrofit projects

As well as the day-to-day duties above, opportunities are available to participate in longer term studio projects such as;

- Development of the company's Net Zero Carbon strategy
- Undertaking relevant research projects alongside daily work
- Engagement with the wider design community, promoting and sharing knowledge

The above list is not exclusive or exhaustive and the post holder will be required to undertake such duties as may reasonably be expected within the scope of the post. All team members are required to be professional, co-operative, and flexible in line with the needs of the post, the Department and Henriksen Studio.

PREFERRED SKILLS & QUALITIES

The candidate should have most or all of these skills, qualities and experiences, and will be able to demonstrate and discuss them in your application and/or at interview:

- A passion for sustainable energy design
- BSc or Higher Diploma in Mechanical Engineering, Building Services or similar
- Member of CIBSE or similar, preferably chartered
- Sound knowledge of building performance and physics
- Experience in or knowledge of Passivhaus design and delivery is desirable, but not essential.
- A “whole buildings approach” to sustainable design

- Advanced Excel skills and progressive IT literacy
- Knowledge of other modelling programs eg. IES, Tas, Energyplus, Thermal or condensation modelling software and/or knowledge of SBEM and SAP modelling or BREEAM is not required but would be advantageous
- Highly organised and able to work flexibly, under pressure and to tight deadlines.
- Drive, enthusiasm, and a collaborative approach.
- Strong written and verbal communication skills.

We are a big-thinking SME, so key personal attributes will include curiosity, initiative, honesty, open and continuous communication, self-awareness, attention to detail and commitment to delivery.

APPLICATION DETAILS

Henriksen Studio is committed to upholding the Equality Act 2010 and encouraging equality and diversity within our workforce and all opportunities provided by the studio. We encourage applications from all backgrounds and communities and are committed to having a team that is made up of diverse skills, experiences, and abilities.

To apply, your applications should be in the form of a covering letter (no more than one A4 page) and a two-page CV addressed to Cally Sadler and emailed to jobs@henriksenstudio.com with details of salary expectations.