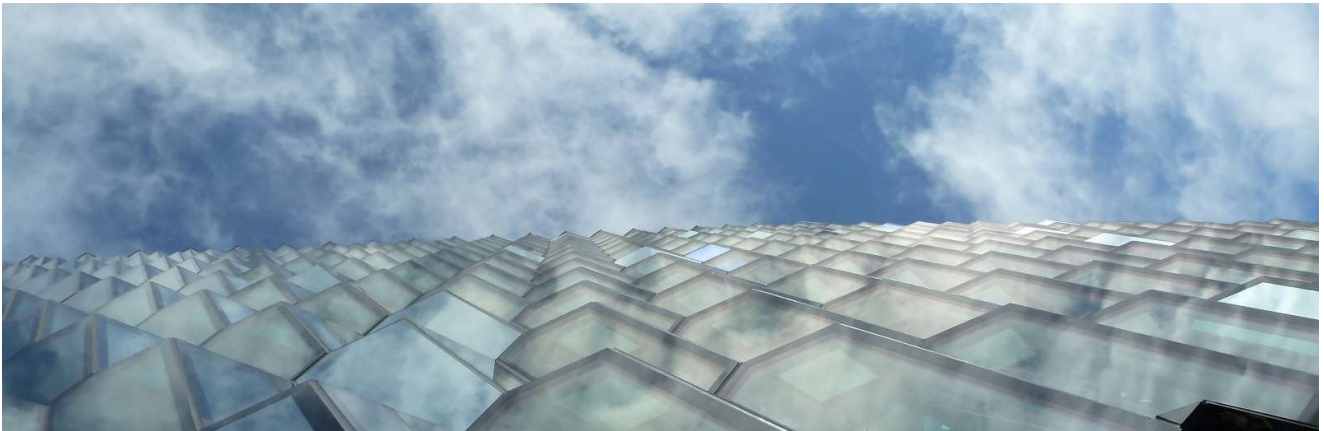


MEP PASSIVHAUS ENGINEER



HENRIKSEN STUDIO LTD

Company Registration No: 12274442. Registered Office: 25 Green Lane, Crawley, Surrey, HA6 2UZ, United Kingdom.

JOB TITLE	Facade Designer Director
CONTRACT TYPE	Permanent, full-time
SALARY	Negotiable

ABOUT HENRIKSEN STUDIO

Henriksen Studio is a fast-growing facade engineering and Passivhaus design consultancy, delivering innovative solutions using the latest facade technologies. Our work includes combining facade engineering with Passivhaus design to achieve industry leading energy efficiency for high-rise buildings.

We design beautiful, low-energy buildings which aim to meet net zero carbon targets and make a genuine difference to climate change. They specialise in creating attractive solutions to complex design challenges with a focus on unique façades and geometric, light-weight steel and glass structures.

Henriksen Studio is one of a handful of highly specialist companies who all work as a community to meet the inexhaustible demand for façade engineering.

JOB DESCRIPTION

Henriksen Studio is seeking a UK-based MEP Engineer ideally with experience in the design and delivery of Passivhaus projects to work closely within our founding team of leading facade design and engineering professionals. Projects have a vast range of scale, detail, and complexity. The position requires the ability to work on multiple projects at a time.

The role will be working with a senior Passivhaus Designer on numerous large scale, world-leading, progressive construction projects.

The company is based in London, but remote working is embraced.

MAIN DUTIES AND RESPONSIBILITIES

- Passivhaus planning and assessment for numerous large-scale projects with a focus on Passivhaus, MEP, building form and fabric, building physics, airtightness and thermal bridging
- The ability to carry out Design Optimisation
- Facilitating design teams to engage with and achieve Passivhaus requirements
- Communication of the assessment progress to clients and providing ways to improve design
- Critical evaluation and refinement of all aspects of building and MEP design – this requires close collaboration with Architects, MEP Engineers, Contractors and other members of a design team in order to understand and refine the design to ensure it meets the exacting standards of Passivhaus
- Construction site visits inspecting the works in progress and championing good quality design
- Thermal Analysis using Dynamic Thermal Simulation tools
- PHPP experience and development of PHPP files in a methodical and organised manner
- Receiving a problem, defining the brief, exploring the parameters, delivering a solution that meets the brief, two-way feedback, checking own work, communicating needs.
- Significant time with design teams and suppliers
- Identifying and self-starting on project needs such as training and resource, administrative needs such as IT, and definition and improvement of quality systems.

The above list is not exclusive or exhaustive and the post holder will be required to undertake such duties as may reasonably be expected within the scope of the post. All team members are required to be professional, co-operative, and flexible in line with the needs of the post, the Department and Henriksen Studio.

PREFERRED SKILLS & QUALITIES

You will have most or all of these skills, qualities and experiences, and will be able to demonstrate and discuss them in your application and/or at interview:

- A passion for sustainable energy design
- BSc or Higher Diploma in Architecture and/or Engineering
- Member of CIBSE or similar, preferably chartered
- Certified Passivhaus Designer/Consultant desirable
- Well versed with software including (but not limited to) PHPP, AutoCAD, Sketchup, Rhinoceros 3D, Grasshopper, Revit, Thermal bridging software
- Advanced Excel skills and progressive IT literacy

- Experience of software development for MEP design
- In-house systems- use of existing, and development of new, software and workflow systems
- Highly organised and able to work flexibly, under pressure and to tight deadlines.
- Drive, enthusiasm, and a collaborative approach.
- A flexible approach to working hours, particularly during busy periods.
- Strong written and verbal communication skills
- A keen interest in architecture and a willingness to travel

We are a big-thinking SME, so key personal attributes will include curiosity, initiative, honesty, open and continuous communication, self-awareness, attention to detail and commitment to delivery.

You may have experience of the following: MEP Engineer, Passivhaus Engineer, Mechanical, Electrical, Plumbing, MEP, Mechanical Engineer, Electrical Engineer, Plumbing Engineer, Multi Skilled Engineer, Architecture, Architect, Architectural Assistant, RIBA, Assistant Architect, ARIBA, Junior Architect, Architectural Technician, BIM, CAD, Engineering, etc.

APPLICATION DETAILS

Henriksen Studio is committed to upholding the Equality Act 2010 and encouraging equality and diversity within our workforce and all opportunities provided by the studio. We encourage applications from all backgrounds and communities and are committed to having a team that is made up of diverse skills, experiences, and abilities.

To apply, your applications should be in the form of a covering letter (no more than one A4 page) and a two-page CV addressed to Toyah Moulton and emailed to jobs@henriksenstudio.com with details of salary expectations.