

TOURETTE AND AUTISM

April 2025

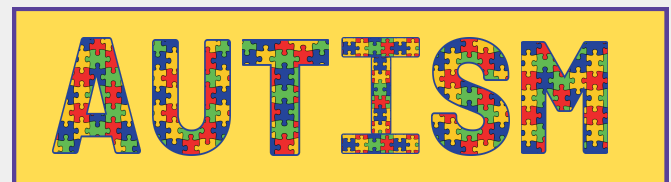


Autism and Tourette Syndrome are classified as neurodevelopmental disorders. Both may have overlapping symptoms, but both are separate conditions. Autism can be a comorbidity of Tourette, but not every individual with Tourette has autism.

United States Health and Human Services Secretary Robert F. Kennedy Jr. recently made statements claiming autism has destroyed families and referred to those with severe autism as injured.

Stating autism “*destroys families*” negates the joy, love, happiness and challenges conquered by those with autism and their families.

To state someone with severe autism is “*injured*” negates the challenges those with autism face and suggests that autism isn’t a genetic condition but a choice of carelessness or something they could have prevented.



"These are broad categories of neurological disorders... ADHD, speech language delays, narcolepsy, Tourette's, ASD [autism]. These are all things I never heard of when I was a kid. They were not part of the nomenclature. They were not part of the dialogue." -RFK Jr.

These comments are damaging and inaccurate. Statements like these perpetuate the stigma of neurological conditions.

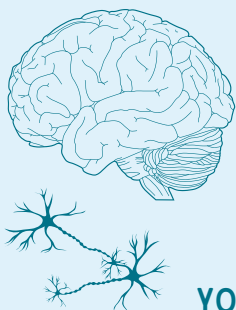
French neurologist Jean-Martin Charcot named Tourette Syndrome after Georges Gilles de la Tourette. In **1885**, de la Tourette published nine cases of tics.

Tourette is often underdiagnosed but Tourette has been noted as early as 1885. Tourette needs to be a part of today’s nomenclature and dialogue.

TOURETTE SYNDROME

IS A

NEUROLOGICAL DISORDER



A NEUROLOGICAL DISORDER IS A CONDITION THAT AFFECTS HOW YOUR NERVOUS SYSTEM FUNCTIONS.

THE NERVOUS SYSTEM IS MADE UP OF THREE MAIN PARTS: BRAIN, SPINAL CORD AND NERVES.

EXCITING NEWS FOR LOVE ON THE SPECTRUM FANS!



FROM THE LOVE ON THE SPECTRUM CASTING PRODUCER

Northern Pictures is working on a new documentary series from the creators of Love on the Spectrum, the critically acclaimed Netflix show about dating and relationships within the autism community. This upcoming project will follow adults from diverse backgrounds who are navigating the modern dating world for the first time. Our team is experienced in crafting sensitive, deeply personal narratives with care and respect. We're committed to bringing that same thoughtful approach to the stories we'll share for this upcoming project.

We understand that individuals with Tourette syndrome are often misrepresented or overlooked in the media, and that dating with TS can bring its own set of challenges. We're hoping to connect with adults (18+) in the Tourette community who are new to dating and open to sharing their dating experiences as part of the series. Our goal is to create an honest and compassionate program that gives participants the opportunity to speak in their own voice, help dispel common misconceptions, and do so in a supportive environment as they take this next step in their lives.



If interested in potentially participating in this ground breaking series, please reach out to Emily Frisbie.

EMILY FRISBIE
CASTING PRODUCER LOVE ON THE SPECTRUM
224.425.9978
EMILYANNE@LOTSPRODUCTION.COM
NORTHERN PICTURES

FOR MORE VISIT:
NORTHERN PICTURES