



2026 CISA Fish Care Plan

Including Boat Management and Weigh-in Procedure

Fish care is a priority for our tournament and is required for the sustainable use of our precious resource. Fish care starts from the time you first catch a fish to the time you release them back into the water at the end of the day. Smallmouth bass are susceptible to higher water temperatures and low oxygenated water. Bass are also susceptible to barotrauma when brought up from deeper water (usually 20+ feet). The following rules pertain to fish care and must be followed by all anglers.

- 1. Fizzing of Fish Showing Signs of Barotrauma:** Once a fish is placed in your live-well, wait for 5-10 minutes for the fish to recover from the stress of being caught. Any fish showing signs of barotrauma (bloated belly, upside down in the live-well) must be properly fizzed to release expanded gas from its swim bladder. Anglers are encouraged to check your fish for this condition often throughout the day. If left alone, the expanded swim bladder will press against critical organs such as the heart and the fish will struggle to maintain life processes and may eventually die. Anglers are encouraged to educate themselves in the practice of properly fizzing bass.
- 2. Culling:** Only non-invasive “clip type” (i.e. non-piercing) culling systems may be used.
- 3. Real-Time Culling:** Immediate culling is mandatory; No team is to retain more than a single tournament limit (5 fish) at any time. If a sixth fish (or seventh fish resulting from a double header) is brought into the boat, culling must occur immediately. All fishing by both team members must stop immediately (i.e.: lines reeled in). At least one fish must be released or until the maximum 5-fish limit is restored before fishing can resume by either team member. While culling, both angler’s baits are expected to be brought in the boat (not left in the water). The penalty for violating this culling procedure is 2lb subtracted from the team’s weight for each infraction. (CISA encourages competitors to adopt and practice this culling procedure if not already doing so. It is in line with other top-tier tournament organizations including International Sportfishing Associations around the world).
- 4. Dead Fish Penalty:** 0.50lb penalty per dead fish. A fish will be determined alive or dead at the fish care station before the fish is weighed; decisions of tournament officials are final.

BOAT MANAGEMENT

5. Detailed information on the exact process will be reviewed at the angler's meeting prior to the event. All boats are required to report to the "check-in" boat prior to weigh in. **See Figure 1 below for the boating procedure for weigh-in and fish release following the green and orange tracks.**
- Boat numbers will be recorded by the check-in boat staff in order of return to be used as the order to be sent into Dock "A" to weigh in.
 - Competitors are to keep their boats in the coolest water (designated staging area) with live-wells ON full until called to the docks to start the weigh-in procedure (wind permitting).
 - The first 15 boats that check in will be sent directly to Dock "A" to start the weigh-in process following the green track. **Switch to "recirculate" when you enter the marina on your way to weigh-in.**
 - There will be 15 boats maximum (see position of boat icons in figure 1) at the designated dock (Dock "A") transporting fish to the holding tanks. As one boat pulls off the dock and exits the basin following the orange track to release their fish, another will be sent in based on flight check in time. **Do not use any other slip but the ones designated for CISA Open use.**

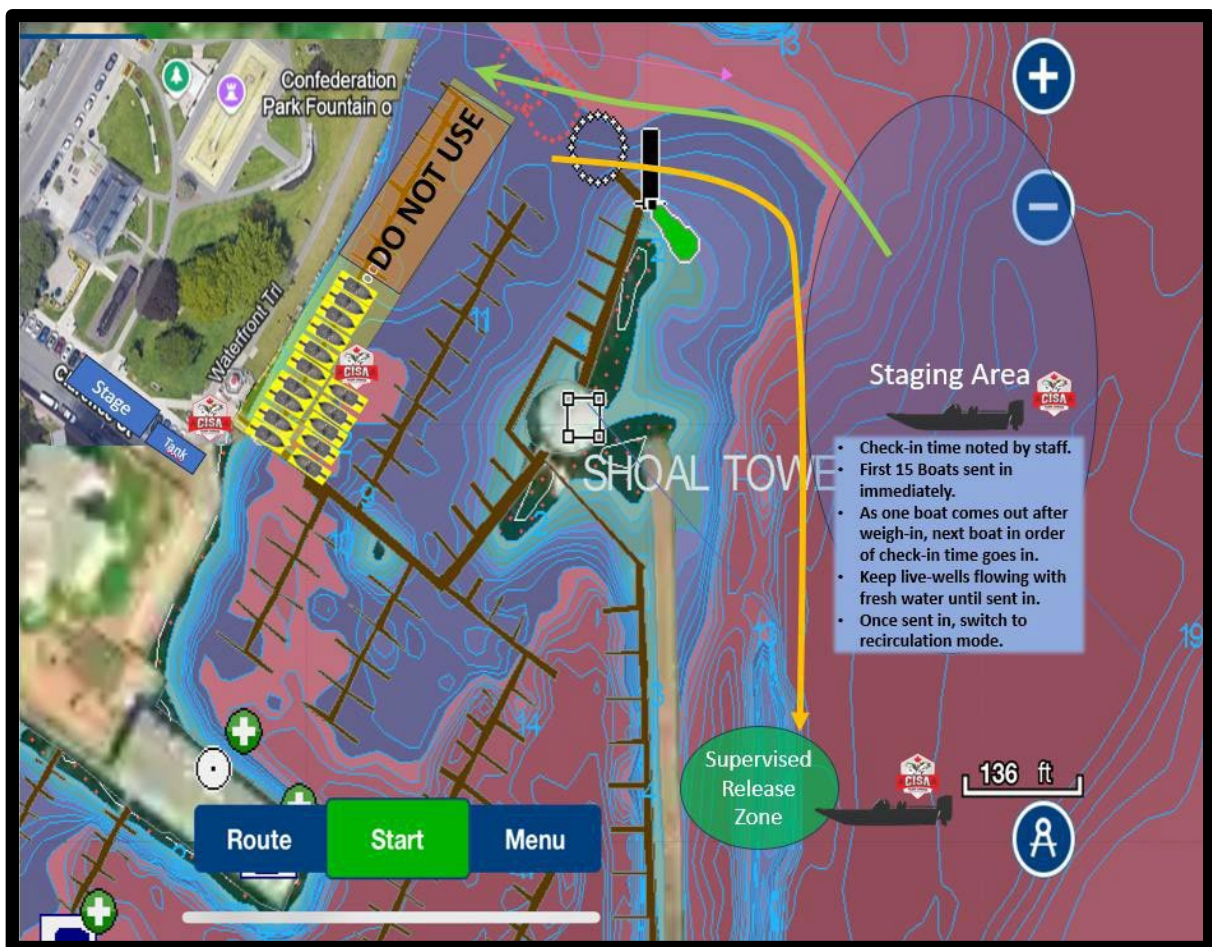


Figure 1. Boat Management

WEIGH-IN PROCEDURE

6. Once at Dock “A” tied up, follow the green and orange lines in figure 2. Below.
 - a. Teams will be presented with filled, aerated weigh-in bags to transport their fish to the scales (only CISA aerated tournament bags will be accepted, do not bag your fish until asked to do so by tournament officials). **See the CISA logo location in Figure 2** for bag distribution points. **Follow the green path in figure 2.**
 - b. Once bagged, partners proceed immediately to the fish care station where fish will be identified as dead or alive. A tagging system will be used to identify a bag that contains a dead fish.
 - c. Once done at the fish care station, proceed to the flow-through holding tank. Place your meshed bag of fish into the last cell of the tank furthest from the stage. Proceed from cell to cell until you are called to the stage.
 - d. Once weighed, the competitor’s fish will be returned to them in a fresh aerated bag at the fish care station (tournament officials will assist in taking meshed bag of fish off the stage and walking them to a new filled bag at the fish care station). Competitors must then proceed immediately back to your boat. **See the orange angler track in Figure 2.**
 - e. **Release Site Confirmation:** Competitors will be responsible for carefully transporting and releasing their day’s catch after their fish are weighed. Follow the orange track in figure 1.
 - f. Competitors will return to their boats with their day’s catch in an aerated bag and then pour the full contents of the bag into the live well...set to full recirc. Make sure you give your bag back to a tournament official/volunteer at the dock before you pull away.
 - g. Once you are clear of the marina, turn your live well **switch onto “fill”** to bring fresh cool water and follow **the orange boat track in figure 1** directly to the predetermined release site and Tournament Official’s boat. Competitors must wait until tournament official(s) are ready to witness and document the one-by-one release of your day’s catch.
 - h. After your last fish has been released, you must confirm with the official before proceeding back to the launch or park facilities. Your consideration and cooperation with this process is greatly appreciated and integral to the success of this and subsequent events.

Weigh-In Process

- 15 Boats sent in first based on time of check-in. Use ONLY the first 10 slips of Dock "A".
- As one boat leaves the basin to release fish, the next will be sent in order of check-in.
- Filled bags supplied at the dock as boats tie up.
- Wait for next bag.
- Transfer fish into meshed bag inside solid bag.
- Take the **green** route to the Fish Health Station.
- Dead fish will be given an identifying tag.
- Proceed to tank, starting at the drain end of the tank and place the meshed bag with fish completely into the flow through tank cell furthest from the stage.
- Progress towards the stage moving from cell to cell until called to stage.
- Weigh fish, get print out of confirmed weight and take meshed bag of fish directly to bag exchange (assisted by staff).
- Dump meshed bag of fish into waiting full bag of water.
- Immediately follow the **orange** route back to your boat.
- Dump full contents of bag into live well.
- Immediately untie and proceed to the designated release site outside the basin to make room for next boat.
- Ensure release of all fish is witnessed by staff at the release site. Give any Dead fish to staff boat. **DO NOT RELEASE a DEAD FISH INTO THE WATER.**

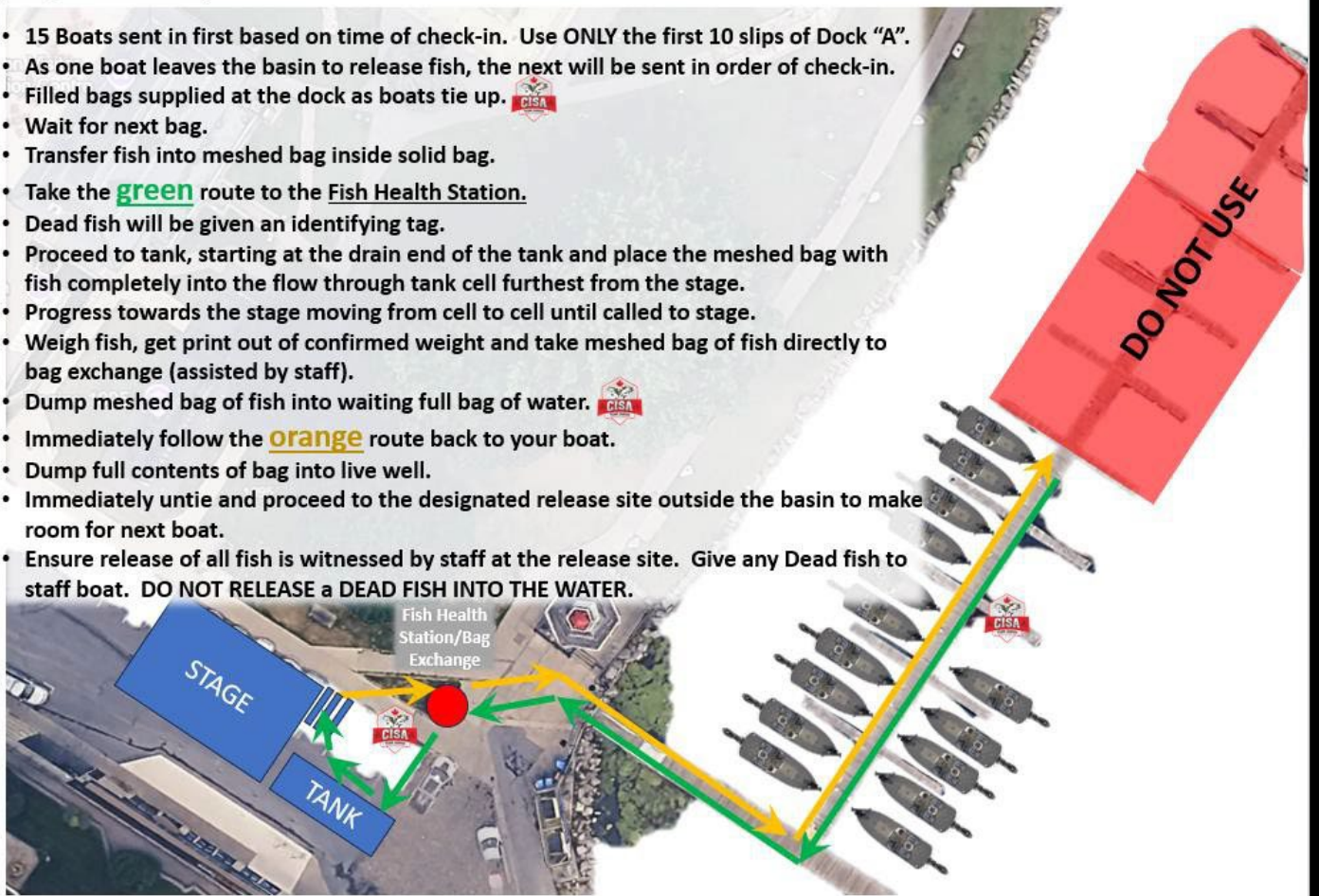


Figure 2. Weigh-in Process