

FIREWORKS – SEW-A-LONG

BY MICHELLE RENEE HIATT

OVERVIEW

Fireworks Sew-A-Long will take place from September 2024 – January 2025*.

**No Lessons will be released in December 2024*

Fireworks features the **Studio 180 Design Tucker Trimmer III™** and **Wedge Star™**. The series will be a technique building series offering different techniques, color building skills, and organizational tips. **Sign-Up:** [Teachable.com](https://teachable.com)

- **Empire Border Setting*** – 102" x 102"
- **Without Empire Border* Setting** – 90" x 90"

**You could add a traditional border onto either of these settings.*



TOOLS NEEDED

- Tucker Trimmer III™
- Wedge Star™

SCHEDULE

- Starting in September 2024 running through January 2025. *No lessons will be released in December 2024.
- 16 Lessons plus Finishing Instructions released weekly*, on Fridays (before midnight).

PATTERN & CLASS MEMBERSHIP OVERVIEW

Pattern & Online Class	<ul style="list-style-type: none">• Includes pattern and all 16 Lessons. Downloadable each week when the weekly pattern is released.• Online/on-demand weekly Video Lessons which will walk through step-by-step weekly techniques and construction.• Lessons include:<ul style="list-style-type: none">○ Fabric Selection and Tool overview○ Step-by-step lessons on new units (repeat units will feature a high-level overview)○ Block Construction where applicable• Bonus Tips, plus basic Quilting Tips and Techniques.• 10% Coupon Code for Tools and Notions.
Email Notification	<ul style="list-style-type: none">• Available with your agreement to receive “promotion” and “product” emails.
Pattern Access	<ul style="list-style-type: none">• Lifetime* access to the Pattern and Video Lessons.• Access weekly pattern and Video Lessons at any time by logging onto your Teachable account. <p><i>*Lifetime if you keep your Teachable account that you signed up with.</i></p>
Pattern Downloads	<ul style="list-style-type: none">• You can download and save the weekly patterns to your device (cell phone is not recommended).• The Pattern is for your personal use and not to be shared.
Facebook Group	<ul style="list-style-type: none">• Access to a private Fireworks Facebook Group (Group to created on August 1st).

PATTERN & CLASS MEMBERSHIP OVERVIEW

MEMBERSHIP PRICING

LIVE VIDEO PREMIERE – EARLY BIRD PRICING

June 4th – June 10th

- **LIVE Video Premiere – Early Bird Discount** - About \$4.70 a Class Lesson
- **One-Time Payment of \$75**

STANDARD SIGN-UP

Starting on June 11th

- **Standard Price** – About \$6.20 a Class Lesson
- **One-Time Payment of \$99**

ADDITIONAL MEMBERSHIP DETAILS

Platform

- **Weekly Lessons will be** released and stored on Michelle’s school on the **Teachable Platform**.

Email Notification

- If you agree to “receive instruction emails”, you will receive an email notification.
- Save **notifications@z.teachablemail.com** as safe address/contact.
- Otherwise, you can log into your Teachable account each Friday evening and access the current and prior releases.

Manage Subscription and Access

- **When you purchase the Membership, you will create an account.**
- You will establish a username and password. You are responsible for remembering your username and password. **Note:** Michelle does not have access to look up or change this information.
- **You can log onto the account at any time** to update your account information or access the released Downloads/Clues.

Clue Downloads

- Downloads **encoded with your Teachable account**.

Sign-Up

- michellereneehiatt.teachable.com/p/fireworks-sew-a-long

Log-In (Once enrolled)

- <https://michellereneehiatt.teachable.com/courses/enrolled>

FABRIC REQUIREMENTS

	Pattern Color	Moda Sku	Moda Color	Fabric Required
1	Background	#9900-098	White Bleached	7 Yards
2	Light Gray	#9900-316	Smoke	1/3 Yard
3	Medium Gray	#9900-184	Steel	1/2 Yard
4	Dark Gray	#9900-283	Lead	2 Yards* Includes Border
5	Light Yellow	#9900-130	Sunshine	1/2 Yard
6	Medium Gold	#9900-232	Saffron	1/2 Yard
7	Light Green	#9900-163	Amelia Green	1/2 Yard
8	Medium Green	#9900-228	Fresh Grass	1/2 Yard
9	Light Aqua Blue	#9900-034	Aqua	1/3 Yard
10	Medium Aqua Blue	#9900-270	Lagoon	1/2 Yard
11	Medium Turquoise Blue	#9900-226	Bright Turquoise	1/2 Yard
12	Med-Dark Celestial Blue	#9900-448	Azul	1/2 Yard
13	Med-Dark Blue Purple	#9900-116	Dusk	1/3 Yard
14	Light-Med Purple	#9900-413	Vivid Violet	1/3 Yard

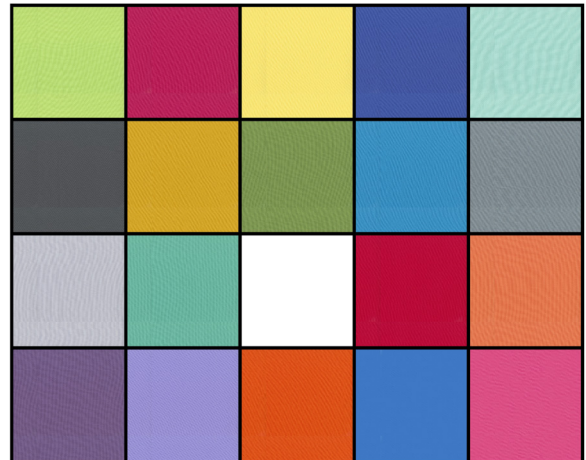
	Pattern Color	Moda Sku	Moda Color	Fabric Required
15	Med-Dark Purple	#9900-139	Aubergine	1/3 Yard
16	Medium Fushia	#9900-386	Pomegranate	1/3 Yard
17	Med-Dark Blue Red	#9900-144	Azalea	1/3 Yard
18	Light Orange	#9900-295	Melon	1/3 Yard
19	Medium Orange	#9900-383	Mandarin	1/2 Yard
20	Med-Dark Orange Red	#9900-382	Ruby	1/2 Yard
Backing				9 ½ Yards

LIMITED KITS AVAILABLE

If you would like to use the same fabric as Michelle (not required), she has coordinated a kit to be sold independently through [The Yankee Quilter](#). The kits will be directly purchased and managed by The Yankee Quilter.

- **MODA SOLID:** Moda – Michelle has selected this collection of Moda Bella Solids for her quilt. You can get the same fabric in the yardage Michelle specified above. **The Yankee Quilter Kit includes Background and fabric to make the Border and the Binding**

[PURCHASE KIT AT THE YANKEE QUILTER](#)



THANK YOU!

Follow Michelle at: <https://www.facebook.com/sewonthego.net>

Follow the Yankee Quilter at: <https://www.facebook.com/theyankeequilter>

