

GRAND CENTRAL

MYSTERY QUILT SERIES BY MICHELLE RENEE HIATT

CLUE #10

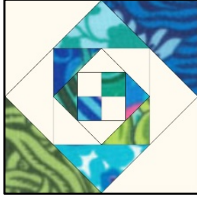
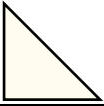
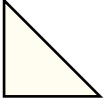
TOOLS NEEDED:

- [Large Square Squared](#)
- [Tucker Trimmer II](#) (optional) – Great for sub cutting the HST


OVERVIEW:

For Clue #10; You will need your Four-Patch Squared⁴ units from Clue #8.

- When cutting the Assorted Bright strips and squares for the HST, I would try to use the greatest amount of variation. In other words, use as many fabrics as possible. When selecting the Assorted Bright to sew on, I would select different fabrics to put together in the unit.
- Check out this week's Blog for assistance: [Clue #10 Blog Post](#)

UNIT		LARGE THROW/DOUBLE	QUEEN/KING
CLUE #8 Four-Patch Squared ⁴ (to the fourth)		28	36
CLUE #1 Group 5 HST (Background)		28	36
CLUE #4 Group 5 HST (Background)		28	36

CUTTING INSTRUCTIONS

UNIT	POSITION	FABRIC	LARGE THROW/DOUBLE CUT	QUEEN/KING CUT
Snail's Trail 	Group 5 Bright HSTs**	Assorted Bright	Cut (7-8) 5 1/4" x HWOFF from an assortment of Assorted Bright	Cut (9) 5 1/4" x HWOFF from an assortment of Assorted Bright
			<input type="checkbox"/> Sub cut into (28) 5 1/4" Squares* Sub cut diagonally into (56) HST	<input type="checkbox"/> Sub cut into (36) 5 1/4" Squares* Sub cut diagonally into (72) HST
*TIP - Use the Tucker Trimmer II to sub cut Squares				

SNAILS TRAIL

1. **Gather** the (28, 36) trimmed Four-Patch Squared⁴ units from Clue #8, (56, 72) Assorted Group 5 Bright HSTs, and the combined Group 5 Background HSTs from Clues #1 and #4 to total (56, 72) Group 5 Background HSTs.

©Michelle Renee Hiatt and Sew on the Go (www.sewonthego.net)

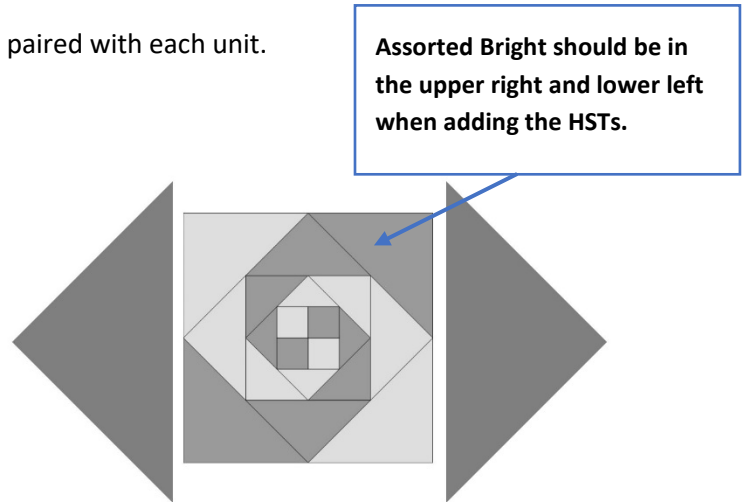
All rights reserved. No part of this pattern may be photocopied or reproduced in any form without prior written consent from: Michelle Renee Hiatt and *Sew On the Go*.

GRAND CENTRAL

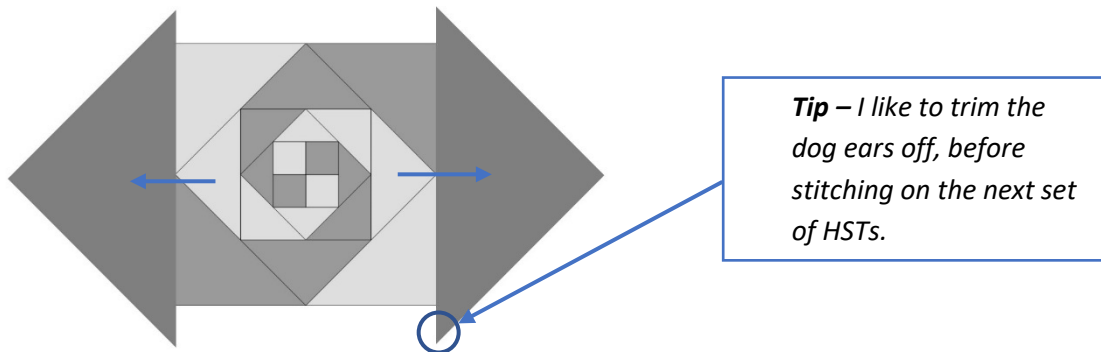
MYSTERY QUILT SERIES BY MICHELLE RENEE HIATT

2. **Lay out** trimmed Four-Patch Square⁴ and Assorted Group 5 Bright HST as shown below.

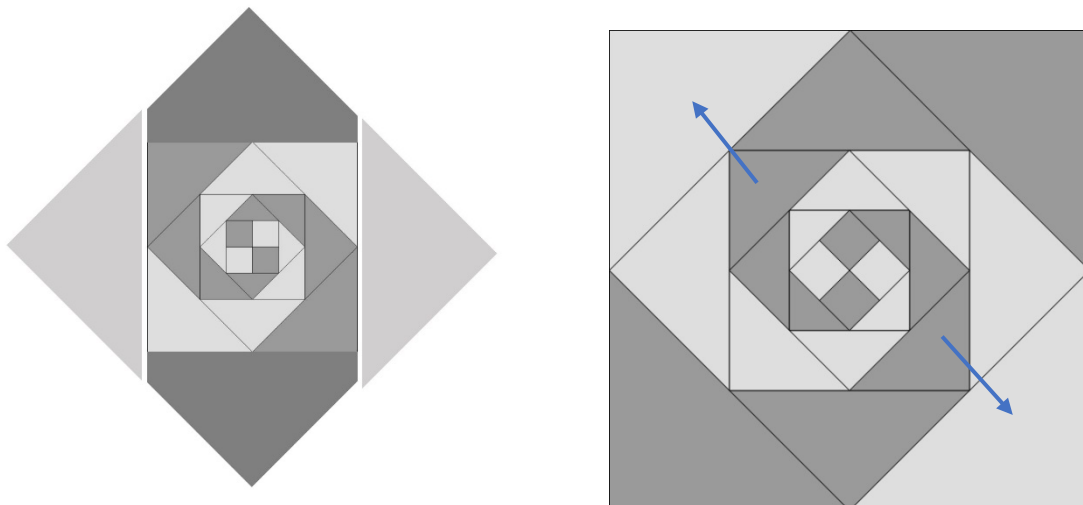
- **Very IMPORTANT:** Make sure to place the last Assorted Bright HST in the upper right corner and lower left corner.
- **Note:** Select different Assorted Bright to be paired with each unit.
- Then, split the Assorted Bright HSTs between the right and left side.
- The HST will be slightly larger than the Four-Patch Squared units, split the difference when lining them up.



3. **Stitch** the left side Assorted Group 5 Bright HST onto the Four-Patch Square⁴. Stitch with the Four-Patch Squared⁴ unit on top and press towards the HST, then sew the right side on and press towards the HST.



4. **Next** lay out the Group 5 Background HSTs, splitting them between the right and left side. Sew similar to the Assorted Bright HST, by sewing the left side on, pressing towards the HST, then sew the right side on and press towards the HST. Always sew with the Four-Patch Squared unit on top.



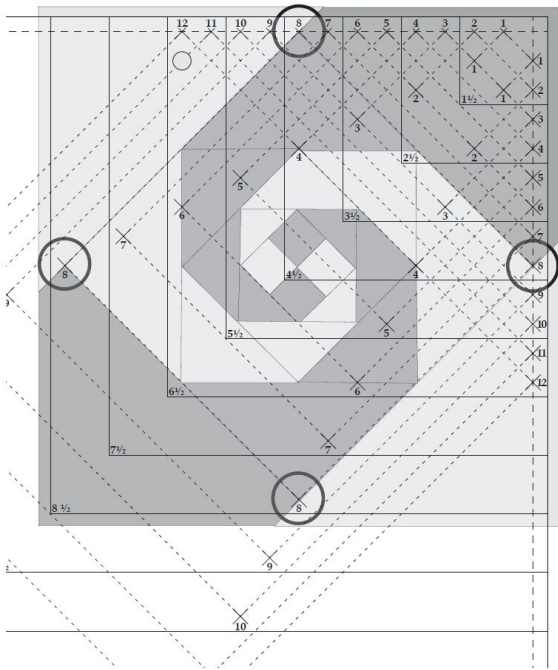
©Michelle Renee Hiatt and Sew on the Go (www.sewonthego.net)

All rights reserved. No part of this pattern may be photocopied or reproduced in any form without prior written consent from: Michelle Renee Hiatt and *Sew On the Go*.

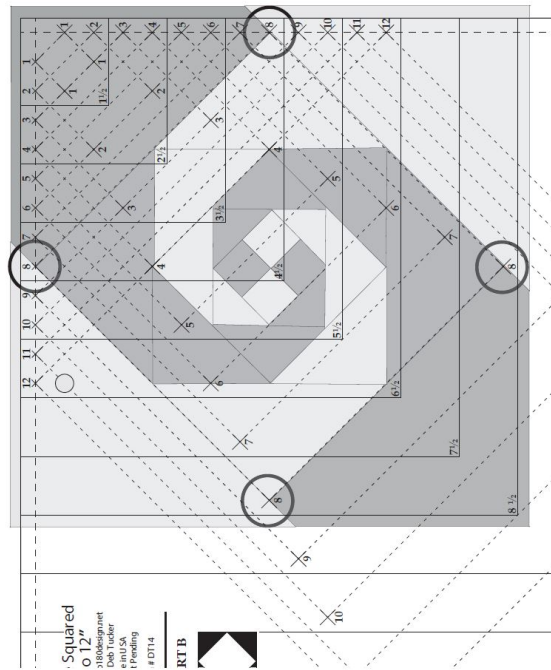
GRAND CENTRAL

MYSTERY QUILT SERIES BY MICHELLE RENEE HIATT

5. **Trim.** Place the **Large Square Squared, Part B**, over the Snail's Trail unit. Center the unit in the middle of the 8" Finished Unit cross hairs and trim the unit's side and top.

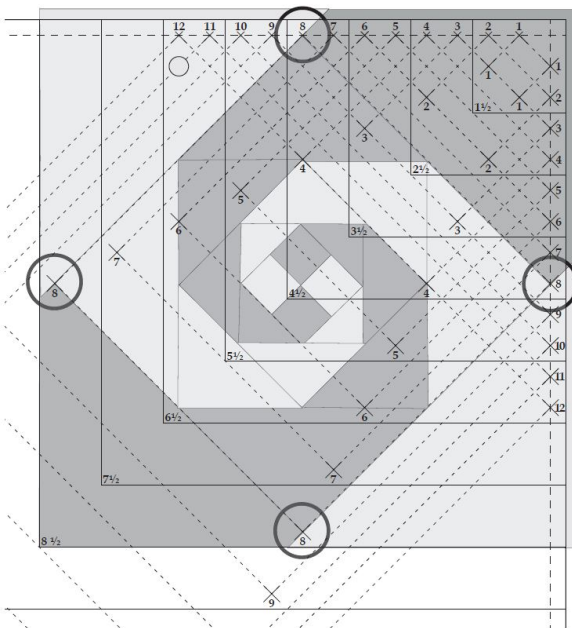


Right Handed

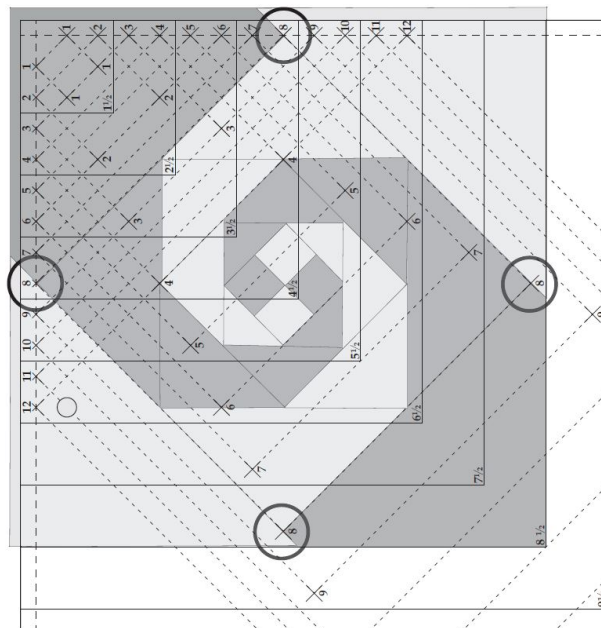


Left Handed

6. **Lift the tool and rotate the unit 180°**, placing the tool back over the unit. The just cut edges should line up with the 8 1/2" square, and the unit should be in the middle of the 8" finished unit cross hairs, trim the last 2 sides.



Right Handed



Left Handed

7. **Repeat** for all (28, 36) units. Label and set aside.

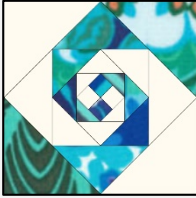
©Michelle Renee Hiatt and Sew on the Go (www.sewonthego.net)

All rights reserved. No part of this pattern may be photocopied or reproduced in any form without prior written consent from: Michelle Renee Hiatt and *Sew On the Go*.

GRAND CENTRAL

MYSTERY QUILT SERIES BY MICHELLE RENEE HIATT

CLUE #10 RECAP

CLUE	UNIT	UNIT CUT SIZE	UNIT FINISH SIZE	THROW/DOUBLE # OF UNITS	QUEEN/KING # OF UNITS
#10	Snail's Trail 	8 ½" x 8 ½"	8"	28	36

Note: If you plan to make the Large Throw (80" x 80") into a Double (99" x 99") or making the Queen (100" x 100") into a King (120" x 120"), please see pages 5 – 8.

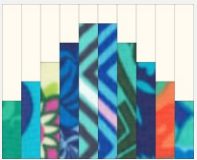
BONUS – TO INCREASE THE SIZE OF THE QUILT

OVERVIEW: IMPORTANT

This Bonus section is only for those that will be making their Large Throw (80" x 80") into a Double (99" x 99") or making the Queen (100" x 100") into a King (120" x 120").

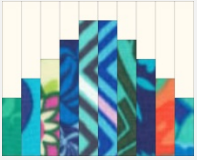
- When fabric requirements were given, it stated that I was working an extra pieced Border, to make the Large Throw a Double or the Queen a King, and stated if you thought you would be interested in doing that to purchase extra yardage: **Throw/Double - 2 Yards of both Background and Assorted Bright or for the Queen/King – 2 ½ Yards of both Background and Assorted Bright.**
- **You will be using that extra yardage for this step.** You will have Background remaining from Clues #1-#10, but you **do not use** that for this step. There are **2 more Clues that needs the original Background fabric.**
- For the **Assorted Bright Fabric (Double-2 yards, King-2 ½ yards)** you will want to cut these into **Fat Quarters (Half Width of Fabric)** if you didn't purchase Fat Quarters.
- **IMPORTANT: Prior to cutting the Assorted Bright, consult the Best Cutting Strategy for the Assorted Bright Section (Page 7). Follow the cutting order there for the best use of your Assorted Bright fabric**
- When you are finished cutting the Background for this Clue, you should have (21"+, 32"+) Background for the extra yardage left for another Clue.

CUTTING INSTRUCTIONS

BLOCK	UNIT	FABRIC	LARGE THROW/DOUBLE CUT	QUEEN/KING CUT
	Track 1 and 10	Assorted Bright*	(5) 3 ½" x HWOFF Strips	(6) 3 ½" x HWOFF Strips
		Background	(3) 5 ½" x WOF Strips <ul style="list-style-type: none"> • Sub cut them into (6) 5 ½" x HWOFF Strips • Save (1) HWOFF for Track 2 & 9 	(3) 5 ½" x WOF Strips <ul style="list-style-type: none"> • Sub cut them into (6) 5 ½" x HWOFF Strips
	Track 2 and 9	Assorted Bright*	(5) 4 ½" x HWOFF Strips	(6) 4 ½" x HWOFF Strips
		Background	(2) 4 ½" x WOF Strips <ul style="list-style-type: none"> • Sub cut them into (4) 4 ½" x HWOFF Strips • Take the (1) HWOFF from Track 1 & 10 and cut down to 4 ½" x HWOFF 	(3) 4 ½" x WOF Strips <ul style="list-style-type: none"> • Sub cut them into (6) 4 ½" x HWOFF Strips
	Track 3 and 8	Assorted Bright*	(5) 5 ½" x HWOFF Strips	(6) 5 ½" x HWOFF Strips
		Background	(3) 3 ½" x WOF Strips <ul style="list-style-type: none"> • Sub cut them into (6) 3 ½" x HWOFF Strips • Save (1) HWOFF for Track 4 & 7 	(3) 3 ½" x WOF Strips <ul style="list-style-type: none"> • Sub cut them into (6) 3 ½" x HWOFF Strips
Track 4 and 7	Assorted Bright*	(5) 6 ½" x HWOFF Strips	(6) 6 ½" x HWOFF Strips	
	Background	(2) 2 ½" x WOF Strips	(3) 2 ½" x WOF Strips	

©Michelle Renee Hiatt and Sew on the Go (www.sewonthego.net)

All rights reserved. No part of this pattern may be photocopied or reproduced in any form without prior written consent from: Michelle Renee Hiatt and *Sew On the Go*.

BLOCK	UNIT	FABRIC	LARGE THROW/DOUBLE CUT	QUEEN/KING CUT
			<ul style="list-style-type: none"> Sub cut them into (4) 2 ½" x HWOFF Strips Take the (1) HWOFF from Track 3 & 8 and cut down to 2 ½" x HWOFF 	<ul style="list-style-type: none"> Sub cut them into (6) 2 ½" x HWOFF Strips
	Track 5 and 6	Assorted Bright*	(5) 7 ½" x HWOFF Strips	(6) 7 ½" x HWOFF Strips
		Background	(3) 1 ½" x WOF Strips <ul style="list-style-type: none"> Sub cut them into (6) 1 ½" x HWOFF Strips Save (1) HWOFF for Scraps 	(3) 1 ½" x WOF Strips <ul style="list-style-type: none"> Sub cut them into (6) 1 ½" x HWOFF Strips

***IMPORTANT:** Prior to cutting the Assorted Bright, consult the **Best Cutting Strategy for the Assorted Bright** section. Follow the cutting order there for the best use of your Assorted Bright fabric

BEST CUTTING STRATEGY FOR THE ASSORTED BRIGHT

LARGE THROW/DOUBLE CUT	QUEEN/KING CUT
<p>From (5) of the (8) Fat Quarters cut the following from each of the (5) Fat Quarters:</p> <p>(1) 7 ½" x HWOFF – Label Track 5 & 6</p> <p>(1) 5 ½" x HWOFF – Label Track 3 & 8</p> <p>(1) 3 ½" x HWOFF – Label Track 1 & 10</p> <p>This will give you a total of (5) for each of the sizes.</p>	<p>From (6) of the (10) Fat Quarters cut the following from each of the (6) Fat Quarters:</p> <p>(1) 7 ½" x HWOFF – Label Track 5 & 6</p> <p>(1) 5 ½" x HWOFF – Label Track 3 & 8</p> <p>(1) 3 ½" x HWOFF – Label Track 1 & 10</p> <p>This will give you a total of (6) for each of the sizes.</p>
<p>From (2) of the (8) Fat Quarters cut the following from both the Fat Quarters:</p> <p>(2) 6 ½" x HWOFF – Label Track 4 & 7</p> <p>(1) 4 ½" x HWOFF – Label Track 2 & 9</p>	<p>From (3) of the (10) Fat Quarters cut the following from both the Fat Quarters:</p> <p>(2) 6 ½" x HWOFF – Label Track 4 & 7</p> <p>(1) 4 ½" x HWOFF - Label Track 2 & 9</p>
<p>From the Last of the 8 Fat Quarters cut:</p> <p>(1) 6 ½" x HWOFF – Label Track 4 & 7</p> <p>(2) 4 ½" x HWOFF - Label Track 2 & 9</p>	<p>From the Last of the 8 Fat Quarters cut:</p> <p>(3) 4 ½" x HWOFF - Label Track 2 & 9</p> <p>* You should have extra of this Fat Quarter. Save it along with your other Assorted Bright Scraps from your main Mystery. You will need these if your Fat Quarters are less than 21" long. If you run short, you will need to make tracks manually, one at a time, from scraps.</p>

1. **Organize, Match and Pair** Assorted Bright and Background Strips together the **Track Group Sets** accordingly:
 - a. Track 1 & 10 – Pair (5,6) Assorted Bright 3 ½" x HWOFF Strips with the (5,6) Background 5 ½" x HWOFF Strips

©Michelle Renee Hiatt and Sew on the Go (www.sewonthego.net)

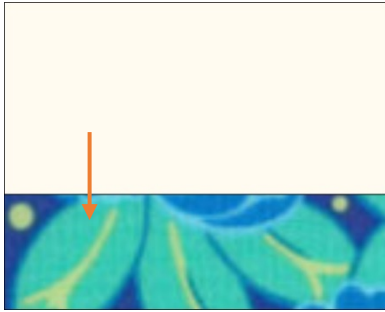
All rights reserved. No part of this pattern may be photocopied or reproduced in any form without prior written consent from: Michelle Renee Hiatt and *Sew On the Go*.

GRAND CENTRAL

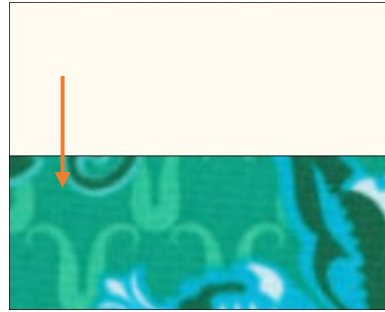
MYSTERY QUILT SERIES BY MICHELLE RENEE HIATT

- b. Track 2 & 9 – Pair (5,6) Assorted Bright 4 ½" x HWOFF Strips with (5,6) Background 4 ½" x HWOFF Strips
 - c. Track 3 & 8 – Pair (5,6) Assorted Bright 5 ½" x HWOFF Strips with (5,6) Background 3 ½" x HWOFF Strips
 - d. Track 4 & 7 – Pair (5,6) Assorted Bright 6 ½" x HWOFF Strips with (5,6) Background 2 ½" x HWOFF Strips
 - e. Track 5 & 6 – Pair (5,6) Assorted Bright 7 ½" x HWOFF Strips with (5,6) Background 1 ½" x HWOFF Strips
2. **Stitch all the Track Group Sets** together along the length of the strip (HWOFF) and press all **Track Strip sets towards the Assorted Brights, except for** half the Track 5 & 6. If you press half the Track 5 & 6 sets towards the Background, you will be able to nest in a later step. You should have (5,6) Strips Sets within each Track Group.

Track 1 & 10:



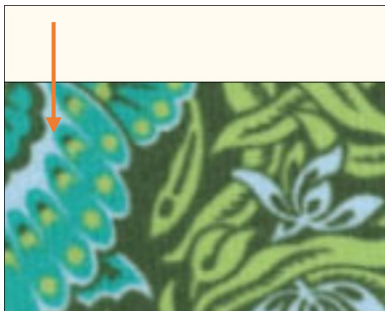
Track 2 & 9:



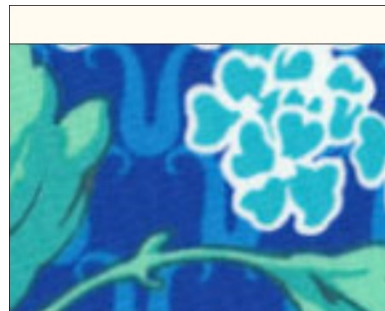
Track 3 & 8:



Track 4 & 7:



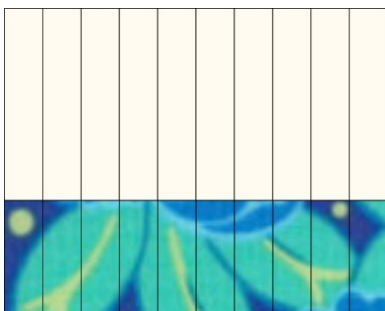
Track 5 & 6:



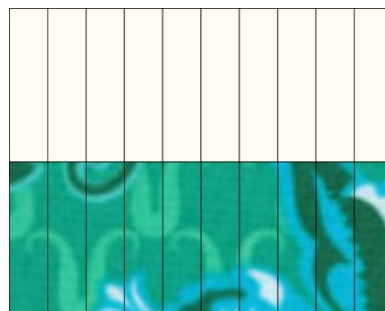
Press half the Track 5 & 6 Strips sets toward Assorted Bright, and half towards Background

- 3. **Press** toward the Assorted Brights for all Track Group Sets' Strip Sets.
- 4. **Sub cut crosswise** each Track Groups Sets' Strip Set, after you square up the end, every 1 ½". Keep sub-cutting until you have (72, 80) 1 ½" sections (Tracks) of each of the Track Group. **You should get 13-14 sub cuts per strip***

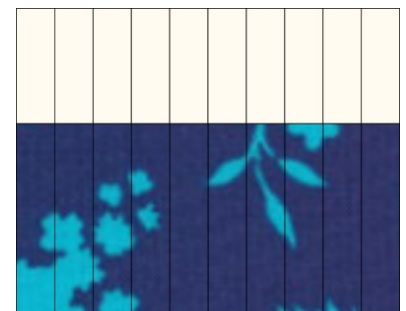
Track 1 & 10:



Track 2 & 9:



Track 3 & 8:

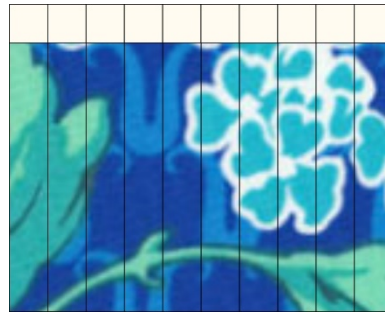
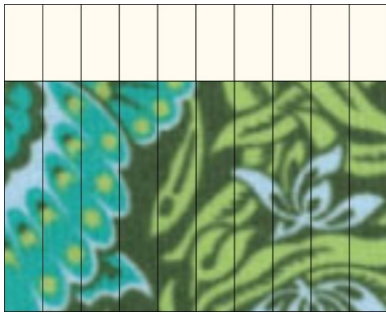


Track 4 & 7:

Track 5 & 6:

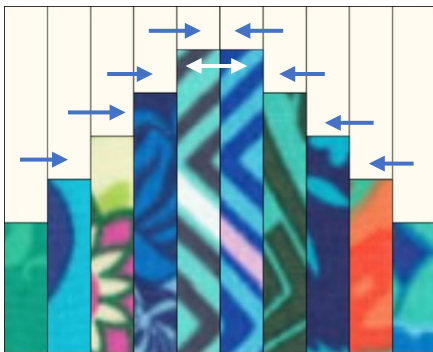
GRAND CENTRAL

MYSTERY QUILT SERIES BY MICHELLE RENEE HIATT



* For the King, if you do not get 14 from each Strip Set, you will need to make tracks manually, one at a time, from scraps.

- Divide the groups;** Take each Track Set Group (1 & 10, 2 & 9, 3 & 8, 4 & 7, 5 & 6) and split them into individually Tracks, so that have (32, 40) Tracks 1,2,3,4,5,6,7,8,9,10.
- Next, mix and pair** together assorted sets of Tracks 1-10 to create the (32, 40) Train Platform Blocks.




1 2 3 4 5 6 7 8 9 10

Note: Depending on your pressing on step 2, and your pairing of Tracks 5 and 6, you may need to reverse some of pressing of Track 6, if you want the seam to nest.

- Press** Track 1-4 towards Track 5. Press the seam between 5 and 6 open. Press Tracks 10-7 towards Track 6.
- Each of the (32, 40) Train Platform Blocks should measure 8 ½" x 10 ½". Label and set aside.

BONUS RECAP

CLUE	UNIT	UNIT CUT SIZE	UNIT FINISH SIZE	THROW/DOUBLE # OF UNITS	QUEEN/KING # OF UNITS
Bonus	Train Platform 	8 ½" x 10 ½"	8" x 10"	32	40