

SEW ON THE GO

by Michelle Renee Hiatt

STASHBUSTER AND BEGINNER QUILTS

QUILT PROJECTS THAT TEACH THE BASICS AND COME TOGETHER QUICK AND EASY.
ONE TOOL, ONE TECHNIQUE, CREATING FUN AND FABULOUS QUILTS



Great projects for Pre-Cuts and Kits!
Excellent projects for Beginner or 4 Hour Classes.



SEW ON THE GO BY MICHELLE RENEE HIATT

WWW.SEWONTHEGO.NET

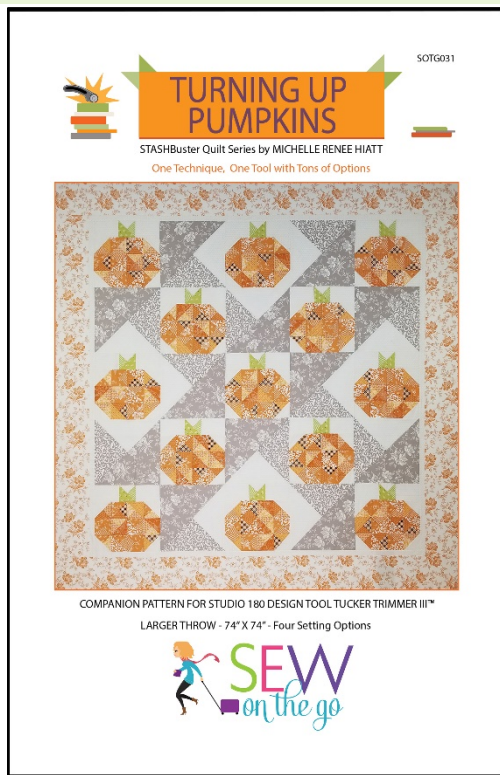
SEW ON THE GO

by Michelle Renee Hiatt

- Michelle's STASHbuster Pattern Booklet Series offers:
 - Step-by-step instructions, offering graphics for both right and left handed quilters.
 - 8 pages of instruction which include all the instructions for the Studio 180 Design tools – no redirect to tool instructions. Everything you and your quilters need is right there!
 - Include Block Summary, Unit Summary, and multiple size diagrams.
 - Professional graphics and are professionally printed in color on high quality stock, with colored cover, and saddle stitched.

STASHBUSTER SERIES

TURNING UP PUMPKINS



Turning Up Pumpkins is a fantastic STASHbuster Quilt that comes together simply and creates a beautiful seasonal quilt. Turning Up Pumpkins features a Pumpkin Block and Setting Block. Rotating of the Setting Block allows for multiple designs. This is the perfect design to use up similar in color Fat Quarters to make up your Pumpkins (or even Apples or Tomatoes).

This is the perfect design to use up similar in color Fat Quarters to make up your Pumpkins. You could elect to use "Halloween" Theme fabric creating a fun and whimsical Turning Up Pumpkins Quilt or go with a more sophisticated look utilizing various Orange fabrics. In fact, the pumpkins could easily look like Apples and be a variety of colors. Just have fun with it!

Studio 180 Design Tool: Tucker Trimmer III™
Finished Quilt Size: Throw 74" x 74"

MULTIPLE SETTINGS OFFERED

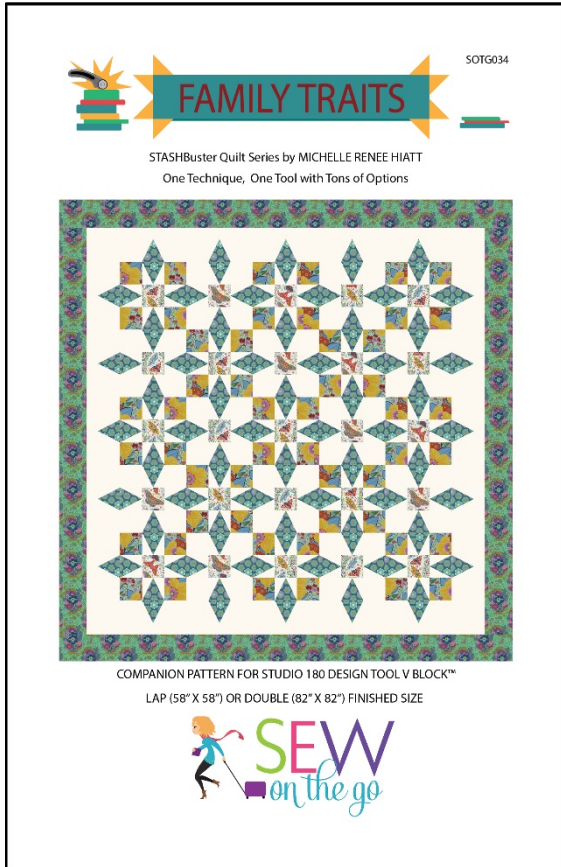


SEW ON THE GO

by Michelle Renee Hiatt

STASHBUSTER SERIES (CONTUNIUED)

FAMILY TRAITS



Family Traits is a terrific **Stashbuster** Quilt that comes together simply and creates a quick delightful quilt. Family Traits features Sisterhood and Brotherhood Blocks, plus a Border Block. All blocks are constructed using the same V Block method. This is the perfect design to use up medium and large-scale prints. The use of a large-scale print for the Corner Squares will give a scrappy look. Alternatively, could uses scraps in similar colors to get the same affect. The Center Square of both Blocks is the perfect place to fussy cut a beautiful fabric with a featured element, such as a butterfly.

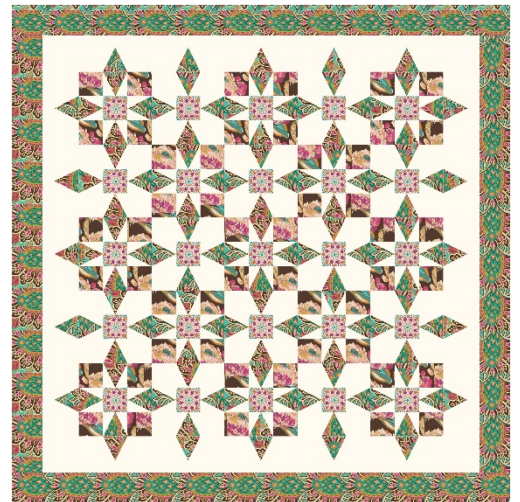
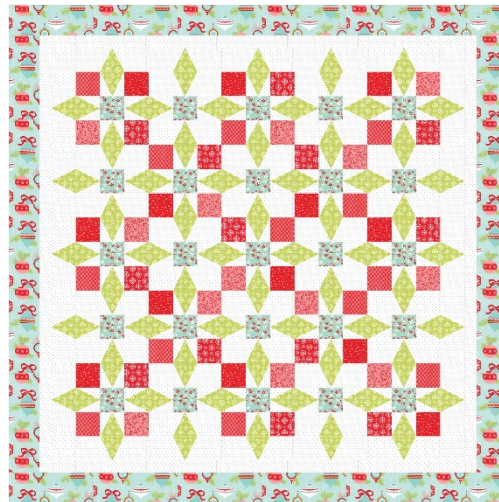
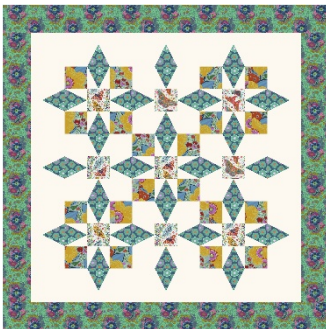
This is the perfect design to use up medium and large-scale prints. If you decide to go scrappy, make sure to gather a bit more yardage, to allow for using multiple fabrics.

Studio 180 Design Tool: V Block™

Finished Quilt Sizes: Lap (58" X 58") or Double (82" X 82")

MULTIPLE SIZES OFFERED

GREAT FOR QUICK HOLIDAY QUILTS

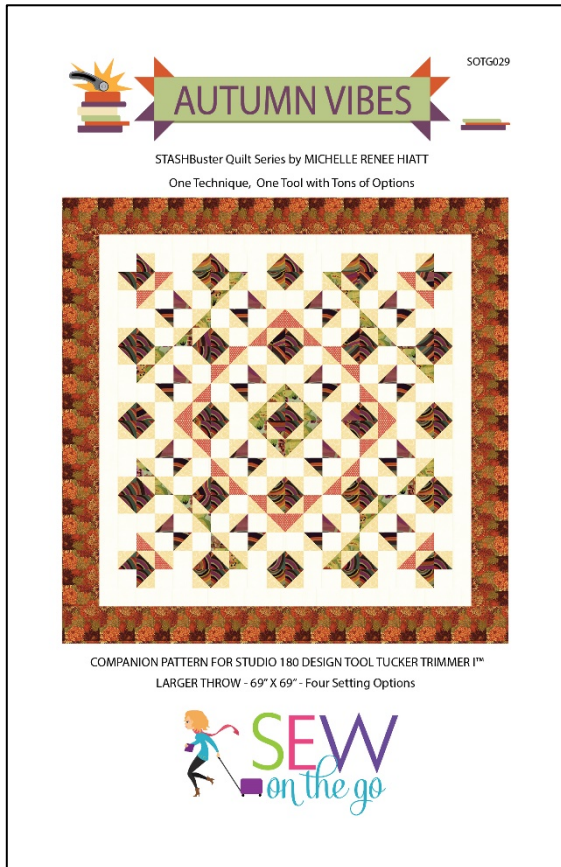


SEW ON THE GO

by Michelle Renee Hiatt

STASHBUSTER SERIES (CONTUNIUED)

AUTUMN VIBE



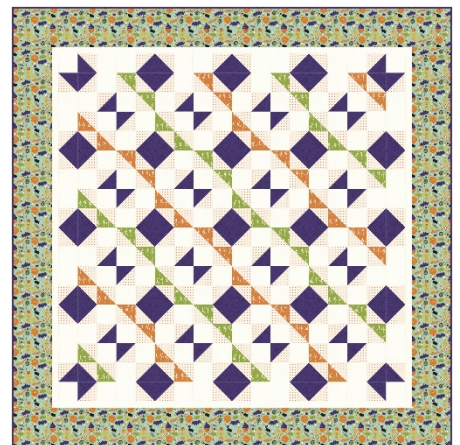
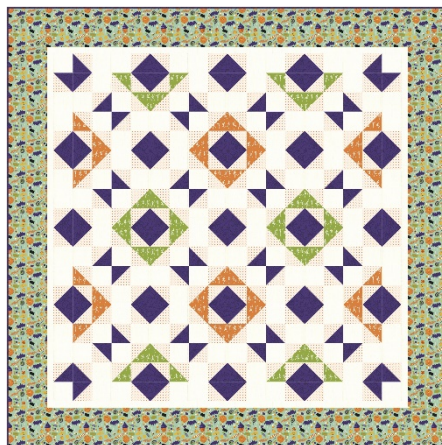
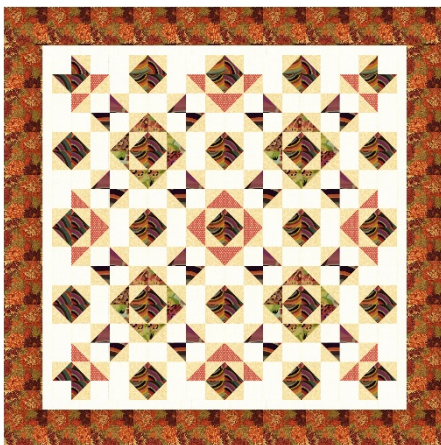
Autumn Vibes is a fantastic STASHBuster Quilt that comes together quickly and easily. Autumn Vibes features the School Girl's Puzzle block. Utilizing the suggested values, will make this a fun quilt to "play" with! This block can be rotated to create a ton of designs. **Four settings** featured in the pattern. **Some even resemble "bats"!** making it a great quilt for those Halloween prints.

When selecting fabrics, it is most important to have 4 distinct values of fabric that have a contrast to your Background: Light, Light-Medium, Medium, and Dark. You can use one fabric for each of those values or many. Go as scrappy as you would like. The key is to ensure you have them categorized in the right value.

Studio 180 Design Tool: Tucker Trimmer III™
Finished Quilt Size: Throw: 69" x 69"

MULTIPLE SETTINGS OFFERED

GREAT FOR QUICK HOLIDAY QUILTS



SEW ON THE GO

by Michelle Renee Hiatt

QUICK AND EASY QUILTS – GREAT FOR BEGINNERS

- Michelle's Pattern Booklets offer:
 - Step-by-step instructions, offering graphics for both right and left handed quilters.
 - Between 24-36 pages of instruction which include all the instructions for the Studio 180 Design tools – no redirect to tool instructions. Everything you and your quilters need is right there!
 - Between 3-6 sizes and include Block Summary, Unit Summary, and multiple size diagrams.
 - Professional graphics and are professionally printed on high quality stock, with colored cover, and saddle stitched.

COMBO WEAVE



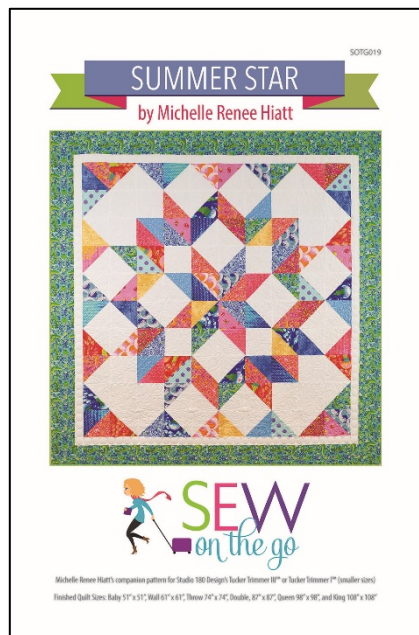
A quick and easy quilt that is a great use for those pre-cuts, fat quarter, or yardage you have been collecting.

Michelle designed this quilt in three (3) sizes, each size uses the same number of units, however the block sizes vary; the Small quilt is made with 4" finished units, Medium with 5" finished units, and the Large with 6" finished units.

Studio 180 Design Tool: Tucker Trimmer III™

Finished Quilt Size: Baby 46" x 50", Lap 57" x 62", or Large Throw 68" x 74"

SUMMER STAR



A quick and easy summer Carpenter Star that is a great use for those scraps, fat quarter, or yardage you have been collecting. Six sizes included! All sizes are made with the same number of units, the size of the half square triangle units determine the size of the quilt. Step-by-step instruction and diagrams included for all six sizes. For the most dramatic effect consider a Split-Complementary color plan, colors opposite each other on the color wheel, picking colors from the warm side (orange/pink) and then across to the cool side (blue/green).

Studio 180 Design Tool: Tucker Trimmer III™

Finished Quilt Size: Baby 51" x 51", Wall 61" x 61", Throw 74" x 74", Double, 87" x 87", Queen 98" x 98", and King 108" x 108"

SEW ON THE GO

by Michelle Renee Hiatt

ABOUT MICHELLE

Michelle Renee Hiatt is an award-winning Quilter, Designer and National Instructor. Michelle has been sewing since before she can remember and fell in love with quilting over 20 years ago.

Michelle Renee is a Certified Professional Process Expert (LSSMBB); she uses her process improvement techniques and applies them to her quilting and teaching others how to simplify their piecing while improving the quality of their quilt making. Michelle Renee teaches throughout the United States at National Quilt Shows and Retreats!

Michelle Renee is the designer for her own pattern line Sew on The Go and her designs have appeared in several international Quilting Magazines. Additionally, she is a Certified Instructor for Studio 180 Design and many of her patterns have been published in their Modern 180 pattern line.



ORDER INFORMATION

Ordering Options:

- Pricing available on Michelle's [Wholesale website and order form](#).
- Quick Order Online Form on Michelle's website: www.sewonthego.net. Just enter the Pattern Title and Quantity.
- Or download the Order Form (Spring Quilt Market Download or on [Michelle's website](#)), complete, scan and email to michelle.hiatt@sewonthego.net.
- Tax Id/Resale # is required to order. All orders will be invoiced via Square to your email account. Orders can be paid with Credit Card or Check. First Order must be pre-paid in order to ship.
- Minimum Purchase is 8 patterns – Mix and match.

CONTACT INFORMATION

Michelle Renee teaches throughout the United States at National Quilt Shows and Retreats! She is known for her humor, enthusiasm and encouragement!

Michelle is available for lectures, trunk shows, workshops and retreats. Please visit her website for additional details. Michelle can be reached either through her website at www.sewonthego.net,

email: michelle.hiatt@sewonthego.net, or phone: #484-818-1869.

 484.818.1869

 Michelle.Hiatt@sewonthego.net

 [sewonthego.etsy.com](https://www.sewonthego.etsy.com)

 sewonthego.blogspot.com

 www.sewonthego.net

 www.facebook.com/sewonthego.net

 @mshellhiatt