

## Rahala Off-road Flag Mount Bracket

### For Nissan Patrol Y62 (2010+) Factory Roof Rails

#### Disclaimer:

Rahala off-road products are well-engineered, proudly manufactured in the UAE from quality materials using state of the art CNC machinery and quality coating.

Due to the unlimited driving challenges our customers are expected to take their cars to, Rahala Off-road does not offer any guarantee on this product once used, we are not liable for any concerns that may rise from improper fitment or use, or not performing periodic checks to this product or any accompanied changes to the vehicle.

For any feedback or suggestions please contact us at <https://rahala-offroad.com/contact-us>

We advise you to always drive safe, comply with regulations, and well maintain your vehicle.

#### Usage & Care Notes

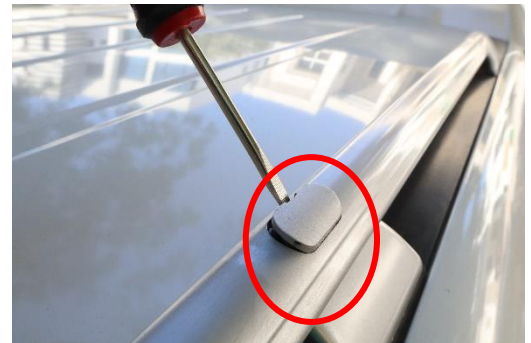
This Bracket will only fit the factory roof rails with the plastic cover circled in red, other designs will not fit.

For longer life, this bracket is dual layer powder coated, we highly advise against any drilling or changes in it, however if at any time the base metal at any area is exposed, we advise you to paint this area to minimize corrosion.

Using a long rigid flagpole with several flags or a big single flag can create huge leverage at the bracket specially when driven at high speed, this can cause damage to your roof rails.

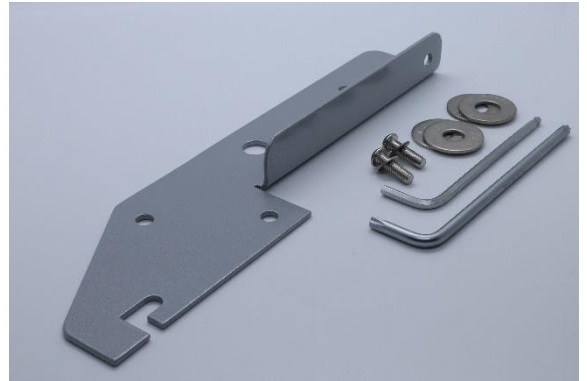
A long flagpole with a bright, small, lightweight flag is the best way to drive through the dunes safely without creating unnecessary leverage.

Do not use bracket with bendable permanent mount flags; as it will be too high to enter parking areas with limited height, we highly recommend using this bracket with flag poles that disconnect at the base.



**Contents:**

- Rahala Flag bracket
- 2x Hex M6 (bolt+ washer)
- Hex key
- Torx key
- 2x 1/2" SS washers (For 1/2" Flag bases)
- 2x 3/8" SS washers (For 3/8" Flag bases)

**Tools Needed:**

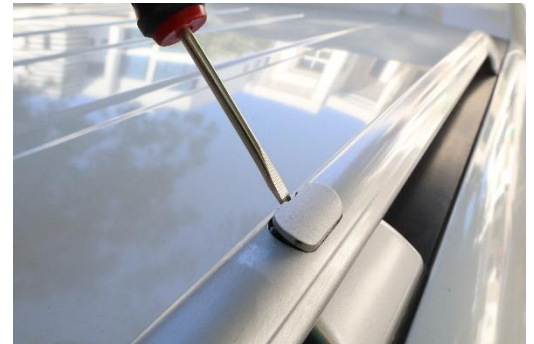
- Torx key(included)
- Hex key(included)
- Flat screwdriver
- Suitable tools to fix your off-road pole and accessories to the Rahala bracket.



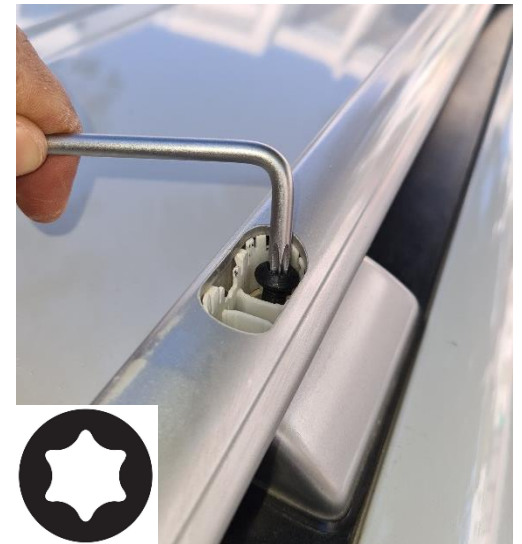
## Installation:

**Always wear proper personal protective equipment (Gloves, eye protection...etc) whenever using tools.**

1. Install your flagpole base to the bracket in the middle hole, there are two sets of washers included, one set is to be used if you are using a base with 1/2" thread(12.5mm), the other set if you are using a base with 3/8" (10mm) thread. Make sure that your pole base bolt is at least 5mm away from the roof to avoid any damage to your roof or paint, if it you need just 2-4mm to get enough clearance you can use the matching included washer(s) by placing it on the top of the bracket (between the bracket and pole base) to shift it up a little, if more than that you will need to trim the bolt, see details below.
2. If you want to install other accessories like camp light or action-cam bracket it is advisable to do it now using – any- of the two outer holes.
3. Now go to your left hand side roof rail, remove the plastic cover using a flat screwdriver



4. Use the Torx key to remove the bolt inside



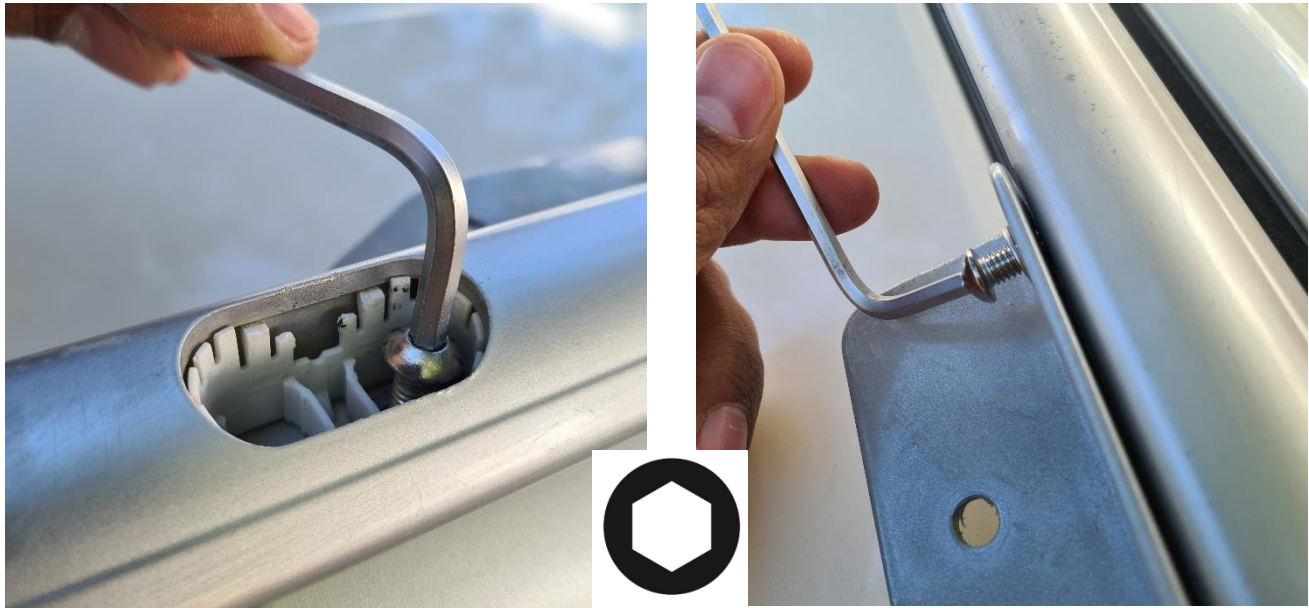
5. Now slightly lift the rail hand to create clearance between the rail and the middle fixing base, slide the Rahala flag bracket between the roof rail and the base, make sure the guide pin in the base passes through the slot in the bracket.



6. Screw in the two hex bolts included (One replaces the bolt you removed and one for the side of the rail) using the Hex key provided, do not forget the small washers, do not reuse the factory bolt again



7. Tighten the two bolts using the hex key.



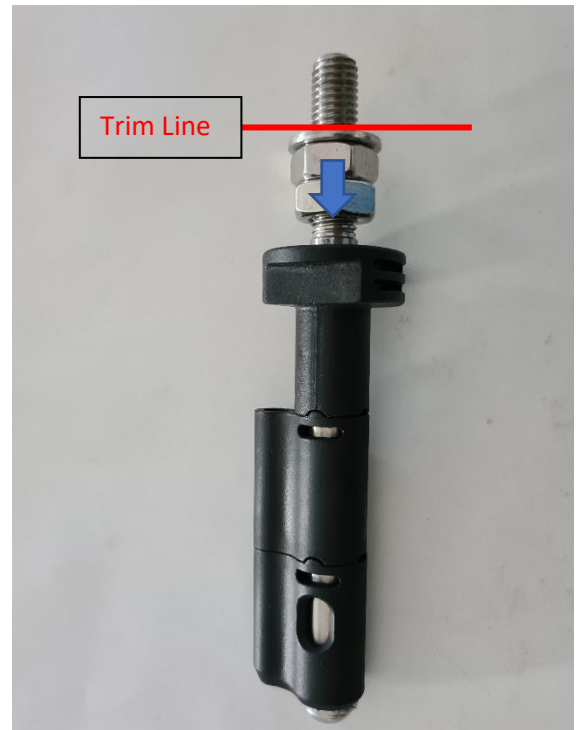
8. Reinstall the plastic cover, your Bracket should now look like this



Stay safe

### Thread Trimming:

1. Use 2 matching nuts on the thread you want to trim, thread them towards the bolt head away from the target trim line



2. Fix the bolt (on a vice or similar tool)
3. Use a saw or suitable tool to trim the bolt at the desired location.
4. As a result of trimming, the bolt thread in the cut area is usually damaged; Now thread the nut(s) back to straighten the damaged threads, go slowly and keep going back and forth when you feel the nut is heavy till the thread is fully straightened.