



National Institute of Forensic Social Work

Canada's Industry Leader in Forensic Social Work Training and Consulting.

Bridging Professions and Building Competencies in Law and Social Work.





Our Mission

Bridging Professions and Building Competencies

Our mission at the **National Institute of Forensic Social Work** is to develop forensic social work as a recognized subspecialty of social work practice in Canada, to build a community of forensic social work practitioners, and to provide professional development program design and training to organizations in Canada.





The Goal

- To create an organization that will merge the law and social work in both theory and in social work practice.
- To bridge law and social work with a conscious effort to advance the cause of social justice.
- To work collaboratively with other national and International organizations to share strategies and ideas for advanced professional training programs in law and social work.

We are recognized as the Canadian industry leader in forensic training and skill development for social work and human service work.





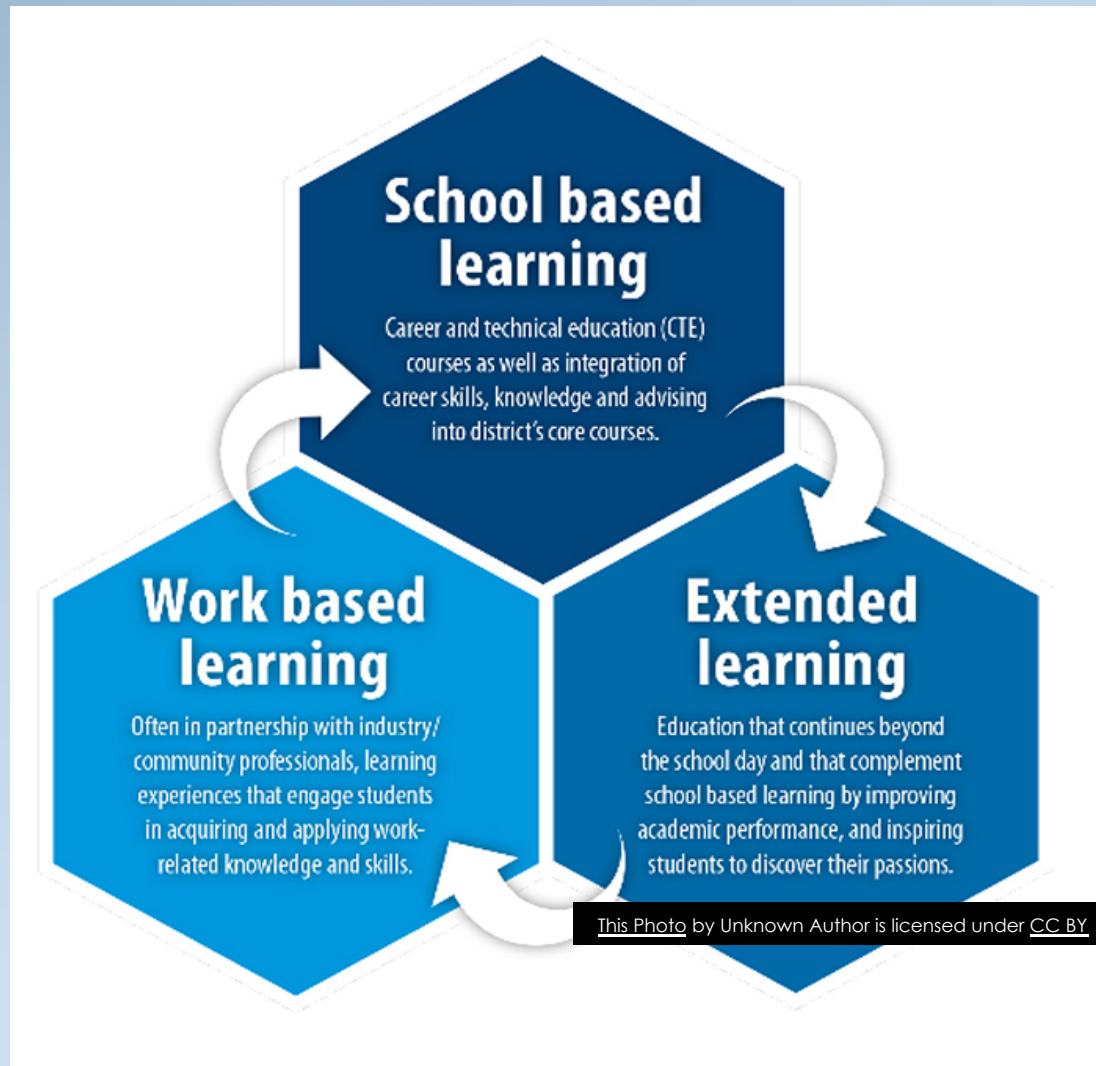
What is Forensic Social Work (FSW)?

- It is when the law and social work intersect.
- It can be in clinical practice, child protection, youth criminal justice, domestic violence, sexual violence, victim services, mental health, corrections law, working with veterans(not inclusive list).
- It is a speciality that requires enhanced professional training with a focus on the law.





Extended Learning in FSW



- Builds competencies in a practice field.
- Expands the skills set of SW'er.
- Creates opportunities for career advancement outside the "typical" jobs for SW'ers.
- You identify as a "expert".
- Provides opportunity for inter-disciplinary practice.





Understanding the Difference

Law and Social Work Course

Theory based (legal, social, feminist).

- Broadly looks at how the law intersects social work practice.
- The distinction between law (legislation), policy and directives.
- Essential law for SW practice.

Forensic Social Work Training

Practice based.

- Focus is on skills development for various areas of speciality practice.
 - Interviewing/Counselling/Advising
 - Assessments
 - Testifying
 - Advocacy
 - Law reforms
 - Social justice reform
 - Litigation Support



Academic Requirements for FSW Practice



Generalist FSW

- BSW, Human Service certificate, Youth Work Diploma and certificates.
- Works in all areas of social work practice- non-clinical such as:
 - Police services
 - Law offices
 - Immigration /settlement services
 - Court navigators
 - Court Services
 - Probation services
 - Victim services supports
 - Government services
 - Child Specialists
 - Child Welfare Agencies
 - Community Organizations (E Fry, John Howard)
 - Child Welfare Services (Protection, Adoption)

Clinical FSW

- MSW, PhD
- Hospital Forensics (Ax & services)
- Forensic Services - Criminal justice system.
- Courts (parenting capacity, parenting time access)
- Collaborative Family law
- Parenting Co-ordinators



What's in a Forensic SW Tool Box?



Legal navigation

Forensic Investigating

Testifying in Court

Forensic Interviewing

Forensic Assessing

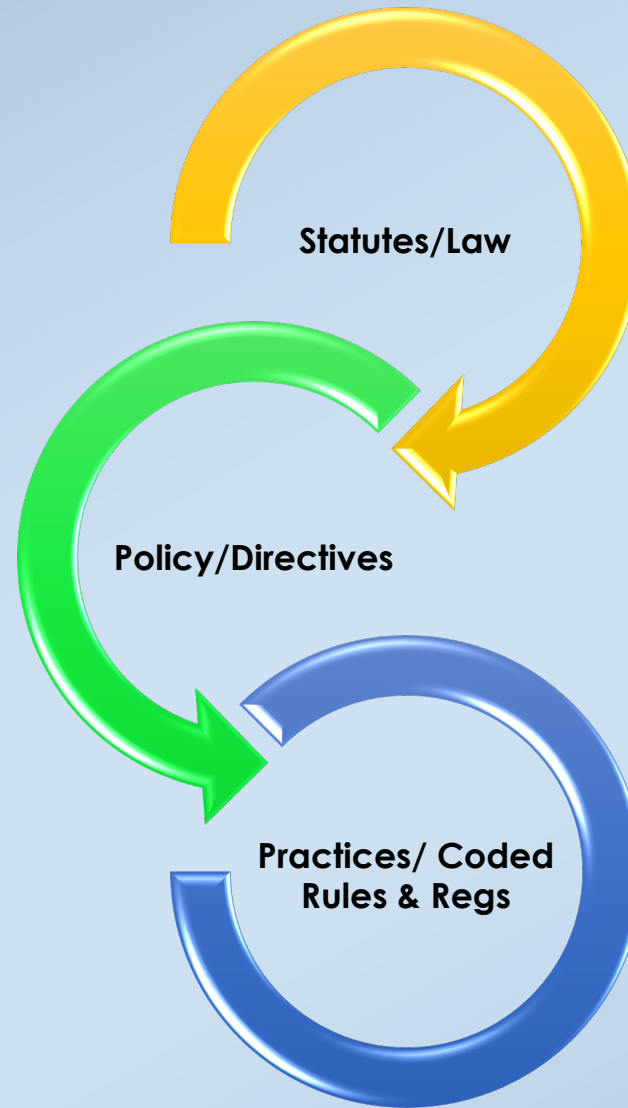
Forensic Counselling

Advocating: in and out of court

Law and Social Reform



Legal Tools for Forensic Social Work Practice





Forensic Social Work- Your Role

- Litigation Support person
- Advisors
- Advocates
- Assessors
- Navigators
- Interviewers
- Consultants
- Witnesses
- Experts (child protection, Child Wishes, parental Capacity, Access)





The Training in Forensic Social Work

The training in FSW can benefit those in the legal community and in the social work profession.

Social workers with the specialized training are hired to work in a variety of environments as part of an inter-disciplinary and inter-professional team.

FSW'ers bring expert social-legal evidence to the workplace, to the case, and to the court room:

- a. written reports such as risk assessments, parenting assessments, access assessments,
- b. child wishes statements
- c. Inter-generational and trans-generational Impact Reports.
- d. Race and cultural assessments.





Unlock an Exciting Career In FORENSIC SOCIAL WORK

Start Your Training Now

Current On-line Courses: Dalhousie University School of Social Work Continuing Education.
Contact: Karla Hatt CE Co-Ordinator to register at coned@dal.ca

Forensic Social Work: Foundational Law for Social Work and Human Service Practice in Canada.

<https://www.dal.ca/faculty/health/socialwork/programs/continuing-education/workshops-courses.html>

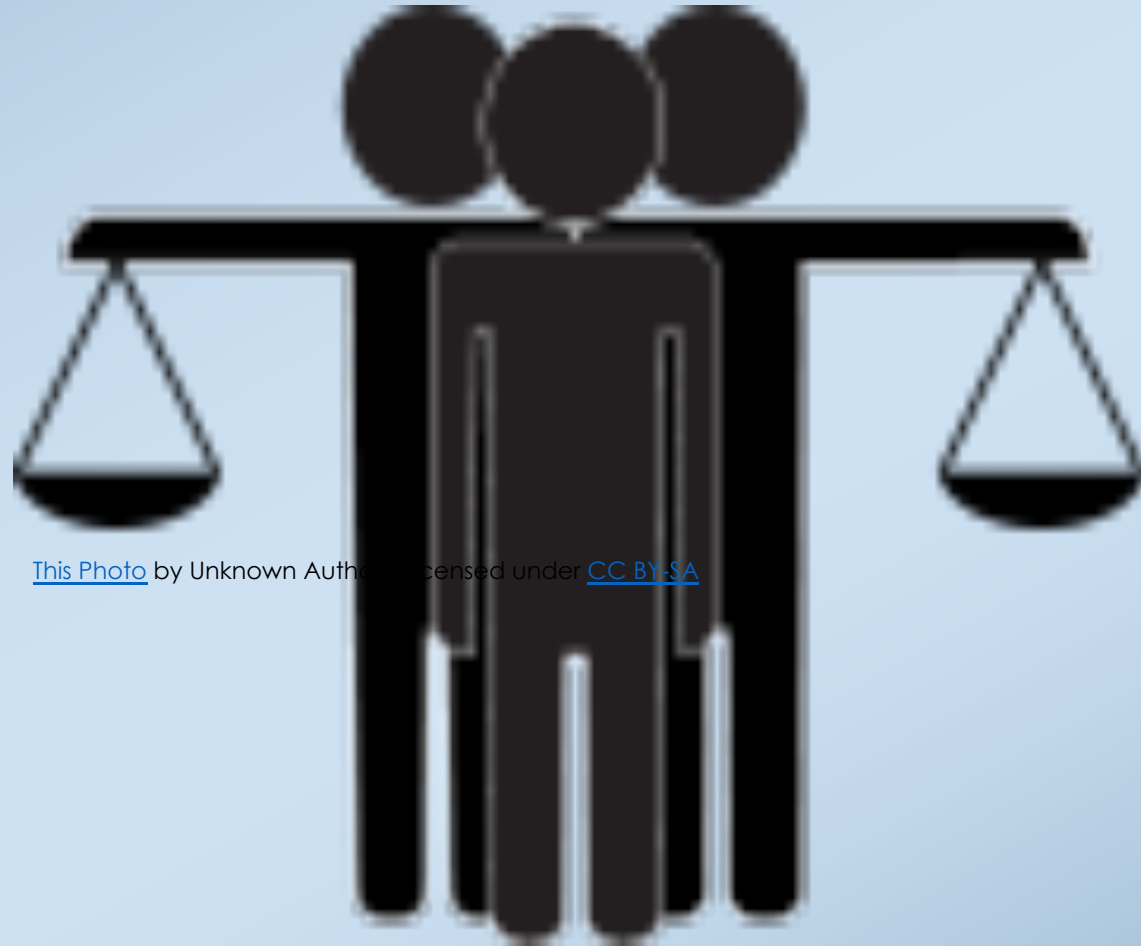
Forensic Social Work: Essential Legal Skills for Practice.

<https://www.dal.ca/faculty/health/socialwork/programs/continuing-education/workshops-courses.html#FSW2>





The Docket , NIFSW's quarterly Newsletter.



[This Photo](#) by Unknown Author licensed under [CC BY-SA](#)



CONTACT US



National Institute of Forensic Social Work

t. 902 443-1515

w. www.nifsw.com

e. info@nifsw.com

Subscribe to our email list for updates www.nifsw.com.

Our social media platforms can be reached through our website.

