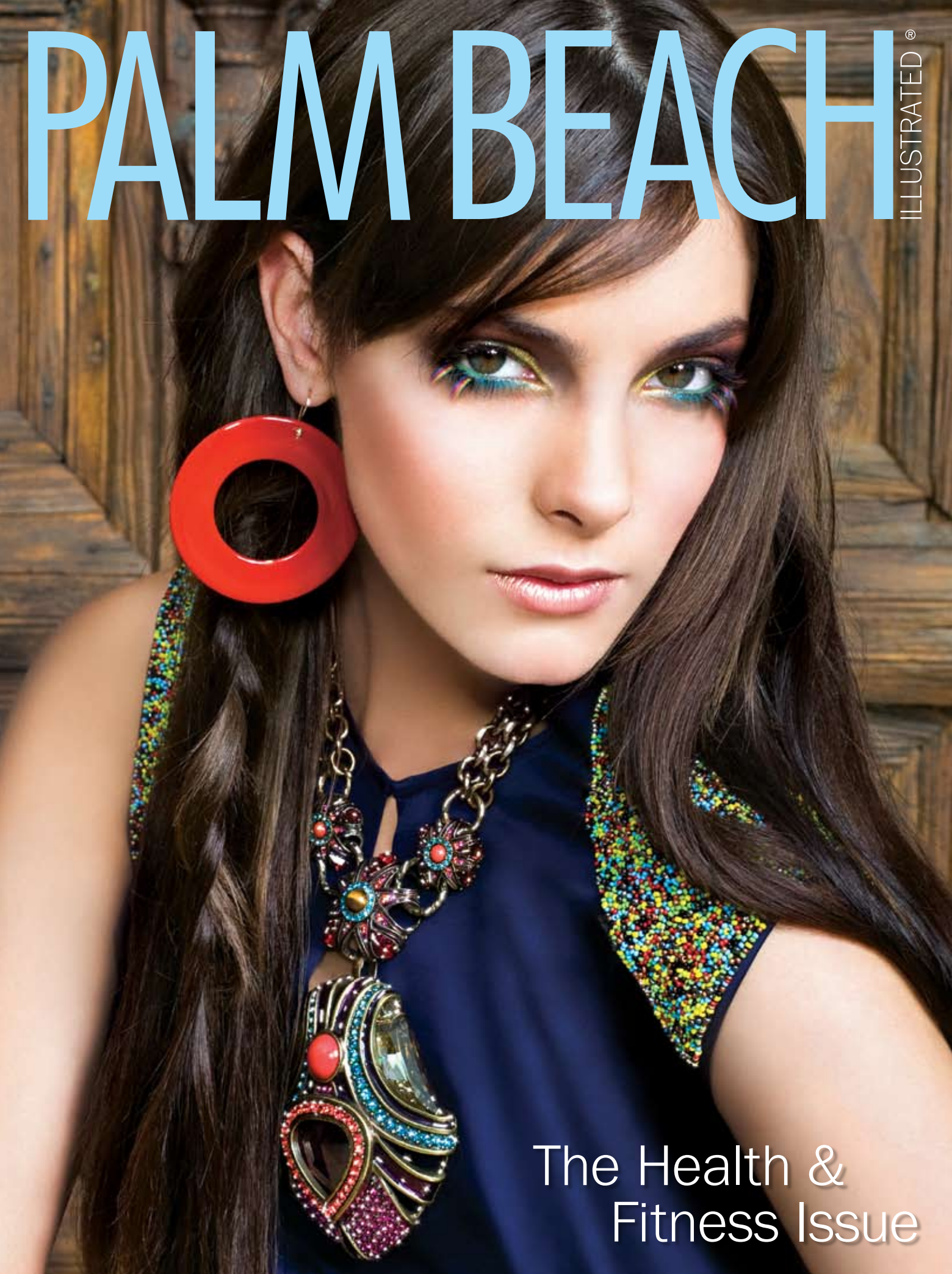


PALM BEACH

ILLUSTRATED®



The Health &
Fitness Issue

open house

GRAND MANSE



OVERVIEW This two-story Italian Renaissance home includes a two-story carriage house, motor court and oceanfront pool.

ADDRESS 1110 S. Ocean Blvd., Manalapan

YEAR BUILT 2010

ARCHITECT Jonathan C. Moore, Smith and Moore Architects Inc., West Palm Beach

BUILDER Chris Lapinski, Fair Dinkum Construction, Delray Beach

INTERIOR DESIGNER Veronica Volani-Inza, ASID, Smith and Moore Interiors, West Palm Beach

ASKING PRICE \$24.9 million

SETTING Oceanfront and Intracoastal views amid lush and peaceful landscaping

SIZE 25,900 total square feet

BEDROOMS/BATHS Seven bedrooms, two staff bedrooms, 11 baths, two half-baths

INTERIOR HIGHLIGHTS Wine cellar; private guest suites with his-and-her bathrooms; elevator; grain vaulted ceilings; stenciled pecky cypress ceilings, custom tile and stone floors throughout home.

EXTERIOR HIGHLIGHTS Custom-designed swimming pool; classical detail with cast stone veneer; cast stone balustrade; clay missions barrel-tile roof; impact windows and doors;

PROMOTION



MICHAEL STAVRIDIS

THIS OPULENT ESTATE FEATURES A TWO-STORY CARRIAGE HOUSE AND VIEWS OF THE INTRACOASTAL AND THE OCEAN.

separate carriage house with two-car garage; formal and service entries; underground parking for 15 cars; deep water boat dock.

FOR MORE INFORMATION Lawrence A. Moens, Palm Beach (561-655-5510)

