



THE  
PLAYER'S  
CUP

PEBBLE BEACH

APRIL 22-25, 2027

EVENTIA  
SPORTS & ENTERTAINMENT GROUP

# EVENT OVERVIEW

THE PLAYER'S CUP IS AN INVITATION ONLY, 3-DAY GOLF EVENT AT THE WORLD-RENOWNED PEBBLE BEACH, DRAWING CURRENT AND FORMER ATHLETES, COACHES, CELEBRITIES, PLUS INVITED CORPORATE & VIP GUESTS.

GOLF WILL BE PLAYED AT SOME OF THE GREATEST COURSES IN THE WORLD!

\*SPANISH BAY, SPYGLASS HILL AND PEBBLE BEACH.

\*AFTER A YEAR LONG RENOVATION, SPANISH BAY WILL BE READY FOR COMPETITION - AND YOU CAN BE ONE OF THE FIRST TO PLAY THE NEW AND IMPROVED COURSE.

GUESTS WILL STAY AT THE LODGE AT PEBBLE BEACH. A LUXURIOUS, 5-STAR HOTEL AND RESORT OVERLOOKING THE BEAUTIFUL PACIFIC COAST.

---

## EVENT SNAPSHOT

-3 NIGHTS: THE LODGE AT PEBBLE BEACH

-3 ROUNDS: SPANISH BAY → SPYGLASS HILL → PEBBLE BEACH

-WELCOME RECEPTION + GIFTING / SHOPPING EXPERIENCE

-DAILY SKINS + POST-ROUND ALTERNATE SHOT DERBY

-AWARDS DINNER AND MORE!





# OUR HOST GOLF COURSES

PEBBLE BEACH

---

SPYGLASS HILL

---

SPANISH BAY

---

*Newly  
Renovated*

TEE IT UP ACROSS THREE OF THE MONTEREY PENINSULA'S  
FINEST—START WITH THE PRISTINE, NEWLY RENOVATED SPANISH  
BAY, TAKE ON THE ICONIC CHAMPIONSHIP TEST OF SPYGLASS  
HILL, AND FINISH IN UNFORGETTABLE FASHION ON LEGENDARY  
PEBBLE BEACH GOLF LINKS.

# ACCOMMODATIONS

## THE LODGE AT PEBBLE BEACH

THE LODGE AT PEBBLE BEACH WILL SERVE AS THE HOST HOTEL FOR THE PLAYER'S CUP.

THE LODGE HAS BEEN A LANDMARK DESTINATION SINCE 1919 AND IS KNOWN AS ONE OF THE GREATEST HOTEL/RESORT DESTINATIONS IN THE WORLD.

THE BREATHTAKING SCENERY AT THE LODGE IS ONLY RIVALED BY THE SINCERE DEDICATION TO A SERVICE COMMITMENT OF CREATING A ONCE-IN-A-LIFETIME EXPERIENCEDURING YOUR STAY.





# SCHEDULE OF EVENTS

## THURSDAY, APRIL 22

- PLAYER ARRIVALS & CHECK-IN THE LODGE AT PEBBLE BEACH
- THE PLAYER'S CUP TOURNAMENT REGISTRATION, WELCOME PARTY & GIFTING

## FRIDAY, APRIL 23

- BREAKFAST AT THE LODGE AT PEBBLE BEACH  
(\$50 DAILY CREDIT AT ALL RESTAURANTS / ROOM SERVICE)
- DAY ONE - GOLF AT SPANISH BAY
- POST ROUND ALTERNATE SHOT DERBY AT POPPY HILLS  
(\$500 2-MAN TEAM BUY-IN)
- DINNER ON OWN

## SATURDAY, APRIL 24

- BREAKFAST AT THE LODGE AT PEBBLE BEACH  
(\$50 DAILY CREDIT AT ALL RESTAURANTS / ROOM SERVICE)
- DAY TWO - GOLF AT SPYGLASS HILL
- THE PLAYER'S CUP COCKTAIL PARTY & AWARDS DINNER  
(BEACH CLUB AT PEBBLE BEACH)

## SUNDAY, APRIL 25

- BREAKFAST AT THE LODGE AT PEBBLE BEACH  
(\$50 DAILY CREDIT AT ALL RESTAURANTS / ROOM SERVICE)
- DAY THREE - GOLF AT PEBBLE BEACH
- FOOD & DRINKS PROVIDED ON THE PEBBLE BEACH PRO SHOP PATIO  
(IMMEDIATELY AFTER GOLF)
- PLAYER DEPARTURES

# TOURNAMENT FORMAT

## COURSE ROTATION

DAY ONE – SPANISH BAY

DAY TWO – SPYGLASS HILL

DAY THREE – PEBBLE BEACH

## 4-MAN TEAMS

BRING YOUR OWN FOURSOME

## COURSE ROTATION

TOURNAMENT COURSES WILL BE SPANISH BAY & SPYGLASS

## TOURNAMENT FORMAT

36 - HOLE COMPETITION

BEST-BALL / GROSS & NET DIVISION

## PRIZES AWARDED

FOR 1ST, 2ND & 3RD PLACE (GROSS & NET DIVISIONS)

PRIZES FOR CLOSEST TO THE PIN & LONG DRIVE

HOLE - IN - ONE CONTESTS

BRING YOUR TEAM



HIT THE SHOTS



WIN THE TROPHY



# PLAYER PACKAGE

## EACH PLAYER RECEIVES:

- (1) ROUND OF GOLF AT PEBBLE BEACH
- (1) ROUND OF GOLF AT SPYGLASS HILL
- (1) ROUND OF GOLF AT SPANISH BAY
- (3) ROOM NIGHTS - THE LODGE AT PEBBLE BEACH
- (1) PASS TO THE PLAYER'S CUP WELCOME PARTY (FOOD & DRINKS)
- (1) \$50 DAILY BREAKFAST CREDIT AT THE LODGE AT PEBBLE BEACH
- (1) SEAT AT THE PLAYER'S CUP AWARDS DINNER
- (1) PLAYER'S CUP SHOPPING EXPERIENCE (\$250 CREDIT)
- (1) PLAYER'S CUP LUNCHEON - POST FINAL ROUND (FOOD & DRINKS)
- NEW** (1) FREE ROUND-TRIP CLUB SHIPPING VIA SHIPSTICKS

## PLUS:

- ENTRY INTO THE DAILY GROSS SKINS GAMES (\$100 BUY IN - OPTIONAL)
- ENTRY INTO THE ALTERNATE SHOT DERBY (\$500 TEAM BUY IN - OPTIONAL)
- TEAM TOURNAMENT PRIZES - GROSS & TEAM NET DIVISION (1ST, 2ND & 3RD)

\*COMPLIMENTARY TRANSPORTATION TO AND FROM MONTEREY AIRPORT PROVIDED BY PEBBLE BEACH - UPON REQUEST

## RESERVE YOUR FOURSOME

\$10,000 DEPOSIT TO SECURE YOUR GROUP (\$2,500 PER PLAYER)

BALANCE PAYMENT DUE BY 1/05/27

WE ACCEPT ALL MAJOR CREDIT CARDS (3% FEE) OR WIRES AT NO CHARGE.

## SINGLE OCCUPANCY

**\$8,250 Per Player**

## DOUBLE OCCUPANCY / ROOM SHARE:

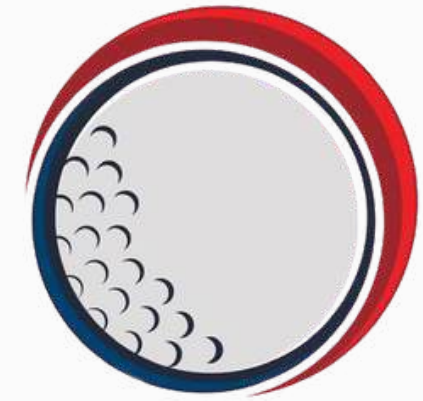
**\$6,750 Per Player**

\*BASED ON AVAILABILITY

## NON-GOLFING COMPANION

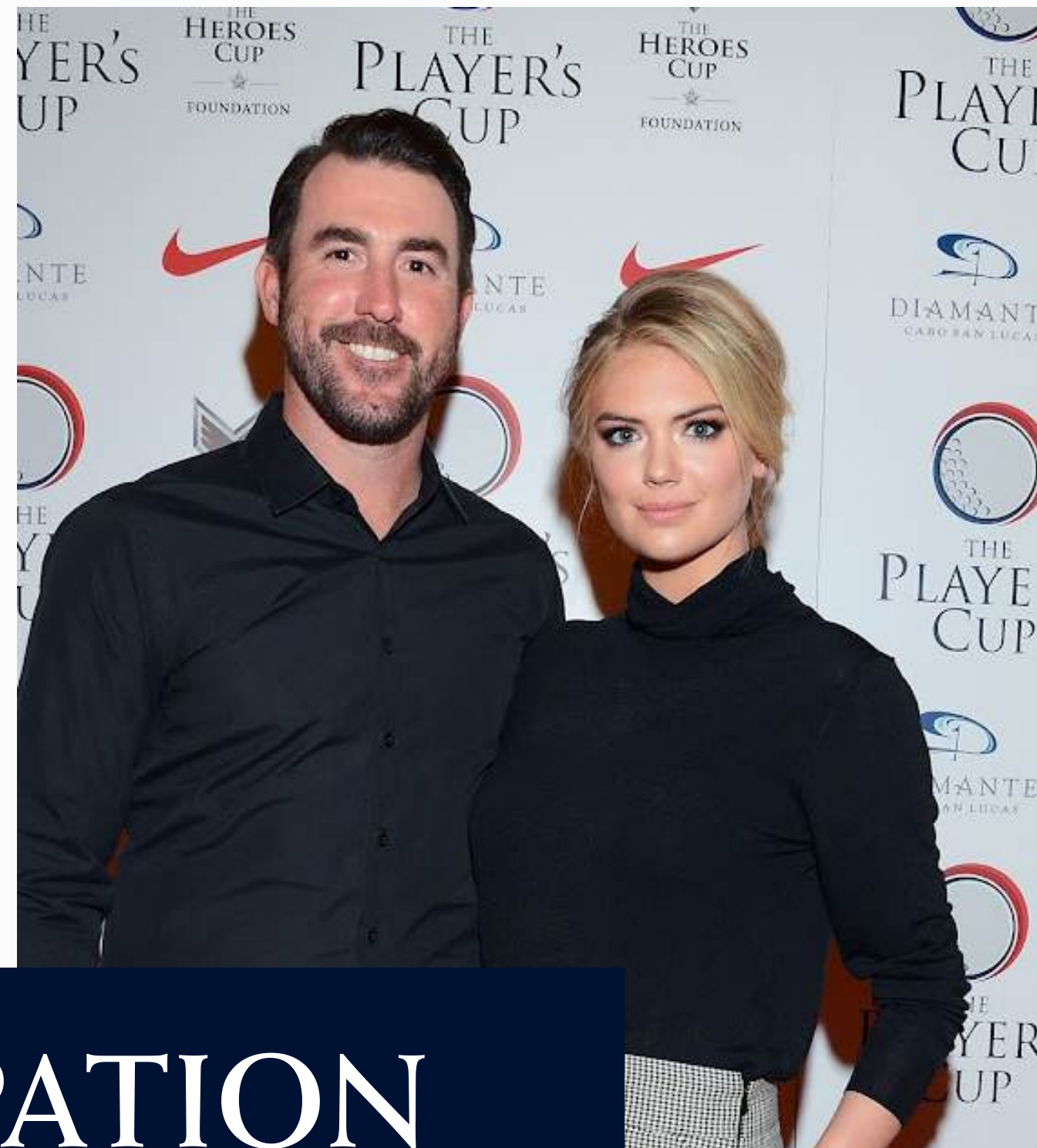
**\$1,325 Per Guest**

(INCLUDES ROOM SHARE, DAILY  
BREAKFAST, PLAYER WELCOME PARTY,  
AWARDS DINNER)



# THE PLAYER'S CUP





# CELEBRITY PARTICIPATION

FOR OVER 25 YEARS, CELEBRITIES HAVE JOINED OUR TOURNAMENTS, BLENDING SEAMLESSLY INTO THE COMPETITION AND THE UNFORGETTABLE EVENINGS THAT FOLLOW. YOU NEVER KNOW WHO YOU CAN SHARE THE FIELD WITH!

Join us for a  
**WORLD-CLASS GOLF EXPERIENCE.**



# CONTACT US



THE  
PLAYER'S  
CUP

For questions on the event, please contact:

**GENE STUNKEL**  
gstunkel@eventiausa.com  
702-493-6921

For team deposits & payments, please contact:

**TOBI GREEMAN**  
tgreeman@eventiausa.com  
760-458-8609