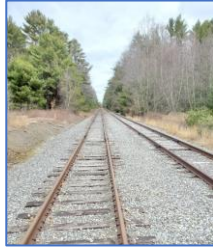


RESTARTING PASSENGER RAIL To AUGUSTA, WATERVILLE, & BANGOR GETTING MAINE BACK on TRACK



Encouraging economic development, while keeping Maine the place we love.

The CASE for EXTENDING PASSENGER RAIL SERVICE

- Grow all parts of Maine's economy, including tourism & rural economic development.
- Transport Maine's workforce from their homes to their jobs.
- Rebuild and revitalize major downtowns to create development opportunities for small businesses.
- Clean the air! Rail is greener than other transportation modes, a plus for Maine's climate action plan.
- Long-term savings as rail investments outlast highways and help take traffic off the road systems.

A POSITIVE INVESTMENT In MAINE'S FUTURE



Passenger rail lets Maine develop a first-rate economy while protecting the environment by:

- + Connecting Maine with all-weather transportation.
- + Encouraging young people to stay and succeed in today's economy.
- + Enjoying urban areas without having to drive and find parking.
- + Promoting new economic development in all regions of Maine.

MOVEMENT IS ALREADY UNDERWAY

LD 227 was passed by the legislature to fund an anticipated ridership (propensity) study.

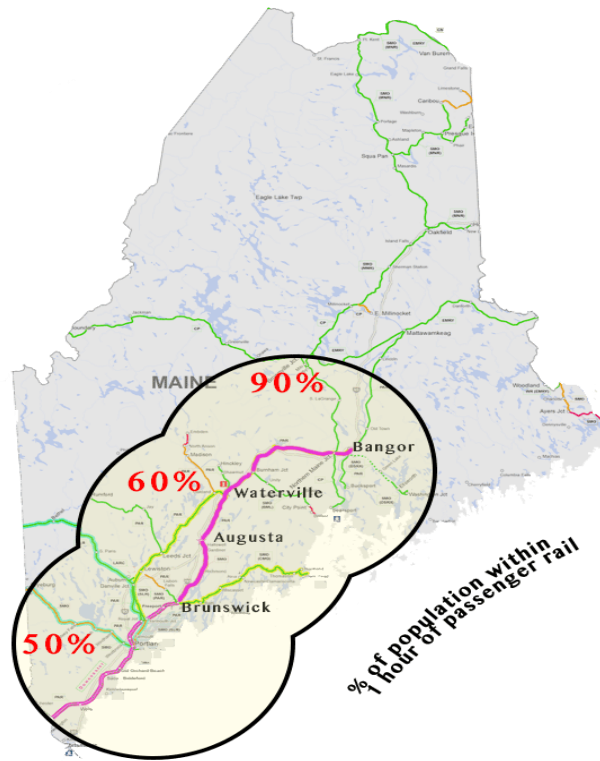
NEXT STEPS FORWARD

1. Gain funding by municipal partnerships.
2. Create a Feasibility and Development plan to study types of service and possible stations.
3. Build public awareness of the plan and the advantages of restarting passenger service.

With positive public support, MaineDOT will enter the Project Development Phase of the Federal Transportation Administration (FTA) "New Starts Program" which includes an environmental review.

www.mainerailgroup.org

SOUTHERN MAINE has been
RAIL-CONNECTED
to the REST of the NATION SINCE 2001
NOW is the TIME for
AUGUSTA, WATERVILLE & BANGOR to JOIN the NETWORK



NEW OPPORTUNITIES

- Links with Amtrak's Downeaster to Boston and beyond.
- Opens economic possibilities in Northern Maine communities.
 - Connects college students across the State.
 - Expands safe transportation alternatives for Seniors.
- Creates relaxing travel with Wi-Fi, power outlets and tables.

WAYS YOU CAN HELP!

- Contact your City Council, State Senator, & State Representative to tell them you support passenger rail to Bangor.
- Contact Senators King and Collins & Representatives Golden and Pingree to tell them you support Federal Infrastructure investment for passenger rail in Maine.
- Follow updates on the Maine Rail Group Facebook page and MaineRailGroup.org website.
- Attend MaineDOT informational meetings.
- Talk to friends about your support of passenger rail to Bangor.

www.mainerailgroup.org