

Turn your shower  
into a spa...



When you are building or renovating your home, you will be planning which features you want to include. Do you look for features that are energy efficient, luxurious and practical?

Features that make you look good, feel good, and only use a small amount of your time so you will continuously enjoy using them on a daily basis?

RELAX-A-MIST® steam bath equipment provides all of this and more!

Unwind and relax after work, sports, or exercising, in your own luxurious steam bath with all of its refreshing and healthful benefits. Enveloped by warm moist steam, fatigue and tension in your body dissolve into the mist as you become refreshed.

Complete your bathroom with a RELAX-A-MIST® steam generator and turn your ordinary shower into your private steam room, ready for your personal enjoyment at the touch of a button.



**RELAX A MIST**

QUALITY STEAM BATH EQUIPMENT

Select from the four Residential models below:

MODEL	JR-1	JR-2	JR-3	JR-4
WATTS	3,000	4,500	6,000	9,000
VOLTS	240	240	240	240
	208	208	208	208
PHASE	1	1	1	1
FUSE @ 240V	20A	30A	40A	50A
FUSE @ 208V	20A	30A	40A	60A
SIZE IN INCHES:				
LENGTH	12 3/4	16	16	16
WIDTH	9 1/4	9 1/4	12 1/2	12 1/2
HEIGHT	9	9	9	9
NUMBER OF STEAM LINES:				
SIZE IN INCHES	1	1	2	2
	1/2	1/2	1/2	1/2
MAXIMUM CUBIC FEET CALCULATED FOR STEAM ROOM	90	175	260	375

Where tile, glass block or other heat absorbing material is used for wall construction and finish, a larger steam unit may be required. See "Steam Generator Selection" on the other side of this page for method calculation.

Disclaimer: The information in this brochure represents suggestions only. Each steam room is unique. RELAX-A-MIST manufactures steam generators only and therefore cannot warrant information given regarding steam room materials or construction techniques. Final selection of the steam room temperature setting and the duration of stay, is at the discretion of the operators or owners.

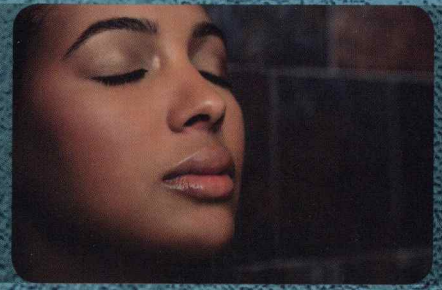
Proudly manufactured in Burnaby, BC Canada

**FOR TECHNICAL SUPPORT:**  
Phone: 1-800 Y-U-STEAM (1-800-987-8326)  
[www.relax-a-mist.com](http://www.relax-a-mist.com)

Contact your local dealer for more information:



Relax...



Rejuvenate...



Refresh...



**RELAX A MIST**

QUALITY STEAM BATH EQUIPMENT

# Steam Generator Selection

Like every person, each steam room is unique. To find out which steam generator is right for your room, follow our simple calculations that account for heat loss when using different materials on the steam room walls and ceiling.



JR1&2

Steam Nozzle with Aromatherapy Reservoir

JR3&4



Quick Touch Timer



Control Cord Set (25ft)



Water Inlet Hose Connection



Time & Temperature Control with Remote

To select the correct size of steam generator, calculate the cubic footage as follows:

1. **Depth x Width x Height = CUBIC FOOTAGE**  
(do not deduct for seating)
2. **Add adjustment to Cubic Footage to account for wall and ceiling material:**

Acrylic or Fiberglass .....	No adjustment
Ceramic or porcelain tile (1/4") .....	+ 30%
Ceramic tile (3/8" or thicker) .....	+ 100%
Natural stone (marble, onyx, slate, etc.) .....	+ 100%
Glass or glass block wall .....	+ 15%
Steam lines over 20ft. (insulate heavily) .....	+ 25%
Cast iron tub .....	+ 25%
Exterior walls subject to freezing .....	+ 30%

3. **Relax-A-Mist steam generator required:**

Model Number	Maximum Calculated Cubic Feet
JR-1	90
JR-2	175
JR-3	260
JR-4	375

4. **Line voltage must be specified when ordering:**

Single family dwellings usually have 240 Volts AC, while condominiums usually have 208 Volts AC.

Note: Use Copper Wire Only.

# Quality Steam Bath Equipment

## HEALING

Steam opens your pores allowing your body to perspire naturally. It reaches deep into your skin to clean out trapped dirt, oil, and toxins, helping to clear up any imperfections while keeping your skin beautiful, healthy, and moisturized.

Steam soothes muscle pain & spasms, helps relieve arthritis, rheumatism, and joint pain. It clears the sinuses, alleviating congestion, asthma, and allergies. A steam bath leaves your body feeling relaxed, rejuvenated, and refreshed, decreasing anxiety and stress.

## ECONOMICAL

A steam shower is an affordable way to pamper yourself everyday without leaving the comfort and privacy of your home.

Relax-A-Mist Steam generators are energy efficient, using less than 3 litres of water and costing less than \$0.20 per use. \*

\* This example is based on \$0.09 per kilowatt hour and the model JR-2 steam generator for 30 minutes. Check with your utility company to find out your hourly rate and to determine the actual cost of your steam bathing.

## RELAX-A-MIST QUALITY

We have been proudly manufacturing residential and commercial steam bath equipment for over 30 years in BC, Canada and we always stand behind our products.

Throughout the entire production and manufacturing process we are constantly testing our parts and equipment to maintain the highest quality and ensure product longevity.

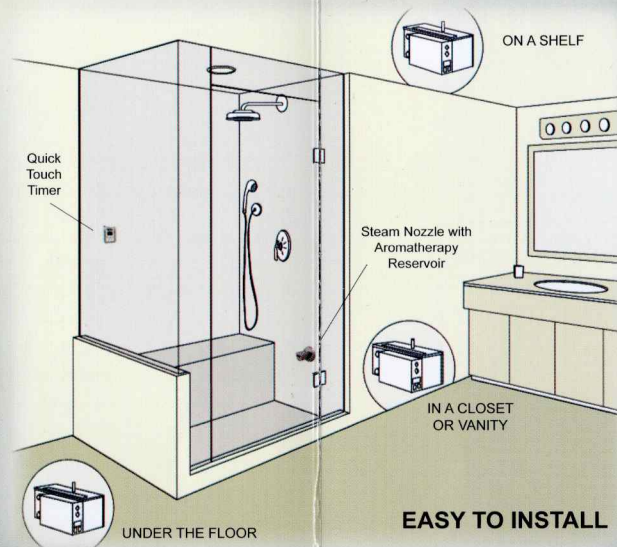


## SIMPLE INSTALLATION

RELAX-A-MIST® steam generators were designed for easy concealment and can be installed up to 25 feet away from the steam room.

Have your plumber or electrician install the unit in a closet, under a sink or in a vanity, on a shelf, or fit under a built-in seat of your steam room.\*\*

\*\* The steam generator must be accessible in case of future service. Install an access panel if necessary.



The *Quick Touch Timer* can be mounted either inside or outside the steam room while the *Time & Temperature Control with Remote* must be installed inside the steam room to read the temperature.

**NOTE:** Controls must be installed in an area away from the steam nozzles, preferably on an adjacent wall.

Optional electronic and manual drain features are available; however, a drain is not required to install Relax-A-Mist® residential steam equipment.

## EASY TO INSTALL

Depending on the model specified for the steam room, your plumber will install one or two copper steam lines from the generator to the nozzle(s) inside the steam room (required to be mounted 12" above the finished floor and away from any user pathways, benches or seating area).

Pressure relief valves and GFCI breakers are not required for our steam equipment, decreasing installation time and material costs.

Have your electrician run a copper power supply wire from your breaker panel to the steam generator and you're ready to begin a lifetime of steam enjoyment!