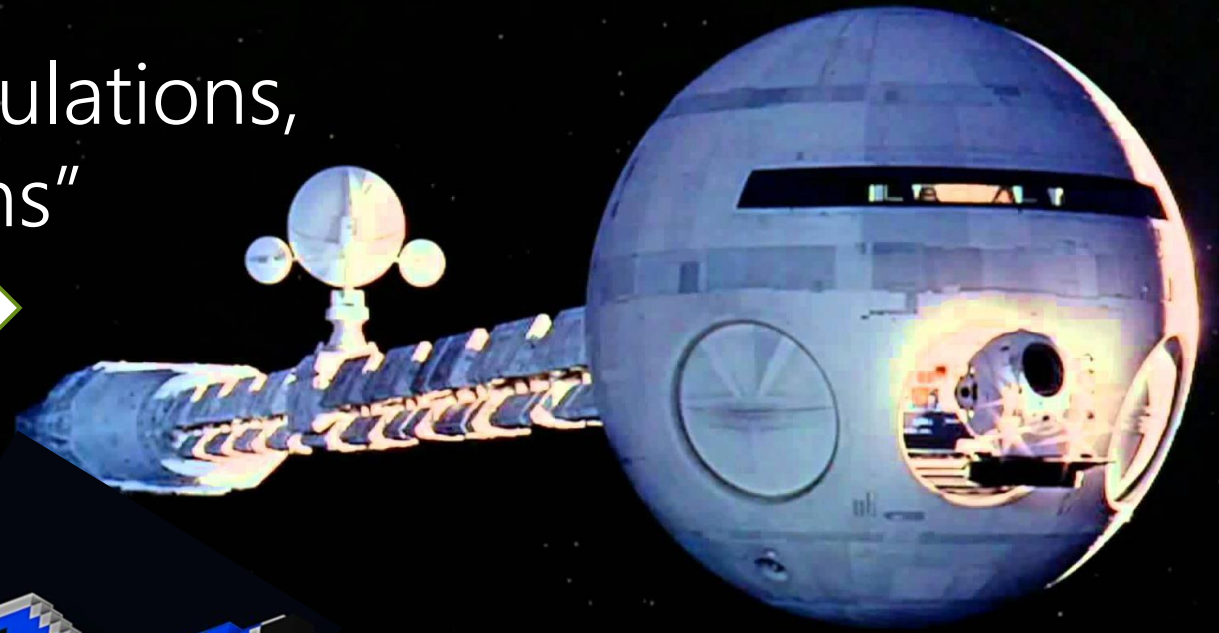
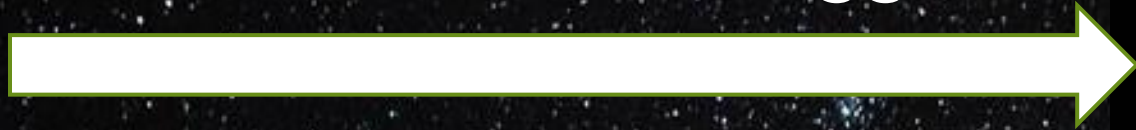


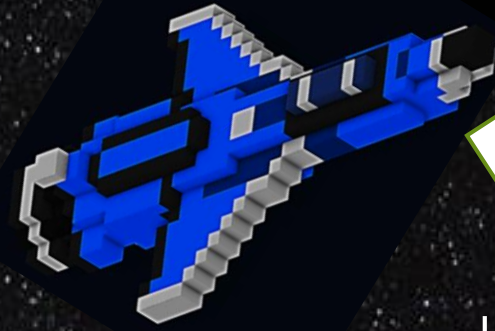
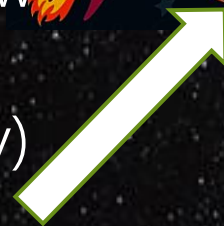
FY2022 HUD CoC Competition Information Meeting

LA-502 Shreveport/Bossier/Northwest Louisiana CoC

HUD with money, regulations,
and "suggestions"



CoC Funded
Programs
Not interested in the
"suggestions",
Too busy trying
to keep people
in housing
(but they have
to enter data, follow
regs and they
NEED more money)



HOPE Connections
(mostly Monique and Christa) trying to get
everyone excited about the "suggestions",
data entry, vaguely enforce the regs and
get NWLA more money

The 2022 Suggestions

HUD POLICY PRIORITIES

IN THE

FY22
NOFO

Priority #1: ***End homelessness for all persons experiencing homelessness.***

Priority #2: ***Use a Housing First approach.***

Priority #3: ***Reduce unsheltered homelessness***

Priority #4: ***Improve system performance.***

Priority #5: ***Partner with housing, health, and service agencies***

Priority #6: ***Advance racial equity and address racial disparities.***

Priority #7: ***Improving assistance to LGBTQ+ individuals***

Priority #8: ***Engage persons with lived experience of homelessness***

Priority #9: ***Support local engagement to increase supply of affordable housing.***

Goal of a Homeless Response System that is Effective, Efficient, and Equitable:

House people as quickly as possible

Divert people from imminent homelessness whenever possible

Homeless Response System: **APPROACH**

Use an equitable systemic approach
to align interventions and resources
across programs in a coordinated
way around this common goal

Homeless Response System: **ENDGAME**

Homelessness is rare, brief, and one-time

- People in a housing crisis have access to immediate help, including a safe place to go
- People are not unsheltered
- People do not spend long periods of time homeless
- People exit homelessness quickly and do not quickly cycle back into homelessness

Homeless Response System: **ENDGAME**

Establish systemic performance measures

- Reduce in-flow into homelessness
- Increase exits to permanent housing
- Decrease average length of homelessness
- Decrease returns to homelessness



United States Interagency Council on Homelessness

Preventing and Ending Homelessness in the United States

The Housing First Checklist: A Practical Tool for Assessing Housing First in Practice

Introduction

Housing First is a proven method of ending all types of homelessness and is the most effective approach to ending chronic homelessness. Housing First offers individuals and families experiencing homelessness immediate access to permanent affordable or supportive housing. Without clinical prerequisites like completion of a course of treatment or evidence of sobriety and with a low-threshold for entry, Housing First yields higher housing retention rates, lower returns to homelessness, and significant reductions in the use of crisis service and institutions.¹ Due to its high degree of success, Housing First is identified as a core strategy for ending homelessness in *Opening Doors: the Federal Strategic Plan to End Homelessness* and has become widely adopted by national and community-based organizations as a best practice for solving homelessness.

Housing First permanent supportive housing models are typically designed for individuals or families who have complex service needs, who are often turned away from other affordable housing settings, and/or who are least likely to be able to proactively seek and obtain housing on their own. Housing First approaches also include rapid re-housing which provides quick access to permanent housing through interim rental assistance and supportive services on a time-limited basis. The approach has also evolved to encompass a community-level orientation to ending homelessness in which barriers to housing entry are removed and efforts are in place to prioritize the most vulnerable and high-need people for housing assistance.

As Housing First approaches become adopted more widely, the need for clarity increases around what the Housing First approach entails and how to know whether a particular housing program or community approach is truly using a Housing First approach. Robust tools and instruments are available which can quantitatively assess and measure a housing program's fidelity to Housing First, and recent research has attempted to create a Housing First implementation checklist. For quick screening, policymakers and practitioners will want to use guide to identify and assess the implementation of the core components

2

YES! They grade us as a community!

4

System Performance	2021 CoC NOFO	2022 CoC NOFO
Reduces the number of homeless individuals and families	1	10
Reduces the number of first-time time homelessness among individuals and families	3	3
Reduces the length of time individuals and families remain homeless	6	13
Demonstrates and describes how the CoC will Increase the rate in which individuals and families move to permanent housing destinations or continue to reside in permanent housing projects	5	13
Reduces the extent to which individuals and families return to homelessness	4	8
Increases income for program participants from employment and non-employment cash sources	4	7
Submits data quality report for HMIS performance measures in HDX		5
POINTS AVAILABLE	23	59

Address Racial Disparities

- ☐ What specific steps are you taking to improve racial equity? What partnerships are you building to obtain input and include persons of different races and ethnicities?
- ☐ What does your Governance Board reflect?
What new partners should you be bringing to the table?
- ☐ Are you rating and ranking based on the degree to which projects have identified ways to address racial inequities?

6



EQUAL ACCESS POLICY IN ACCORDANCE WITH GENDER IDENTITY UPDATED SEPTEMBER 2017

Page 1 of 7

PURPOSE

The purpose of this policy is to define equal access to housing in CoC-funded programs regardless of gender identity. This policy is pursuant to the final rule (Equal Access in Accordance with an Individual's Gender Identity in Community Planning and Development Programs; FR 5863-F-02) which requires that HUD's housing programs be made available to individuals and families without regard to actual or perceived sexual orientation, gender identity, or marital status. The rule further defines "gender identity" to mean "actual or self-perceived gender-related characteristics." The final rule eliminates the prohibition on inquiries related to sexual orientation or gender identity, so that service providers can ensure compliance with this rule. The removal of the prohibition on inquiries related to sexual orientation or gender identity does not alter the requirement to make housing assisted by HUD and housing insured by the Federal Housing Administration (FHA) available without regard to actual or perceived sexual orientation or gender identity.

This policy also provides guidance on appropriate and inappropriate inquiries related to a potential or current client's gender identity for the purposes of placing transgender or gender non-conforming persons in temporary, emergency shelters or other facilities with shared sleeping areas or bathrooms.

APPLICABILITY

HOME Investment Partnerships (HOME) (24 CFR part 92), Community Development Block Grant (CDBG) (24 CFR part 570), HOPWA (24 CFR part 574), ESG (24 CFR part 576), CoC (24 CFR part 578), as well as owners, operators, managers of shelters and other buildings and facilities and providers of services funded in whole or in part by any of these programs.

SCOPE

The policy establishes the requirement that all Mississippi Balance to as "BoS" contracted programs, shelters, other buildings, accommodations ensure equal access to an individual specifically sets guidelines pertaining to 55VF, HOPWA, and CoC-funded programs.

1. Access to sex-een
2. Access to d
3. Acc

8

Partnering with people with lived experience

- ☐ How are you including people with lived experience across the continuum, including review and recommend revisions to local homeless policies?
- ☐ How are people with lived experience included in decision-making processes including the development of the local competition rating factors?
- ☐ Are you being purposeful in using the voices of people with lived experience that have been homeless within the last 7 years as well as those who are currently experiencing homelessness?

Funding Available for NWLA

FY2022 Annual Renewal Demand	\$4,100,192
Tier 1	\$3,895,182
Tier 2	\$205,010
CoC Bonus Project	\$205,010
DV Bonus Project (CoC will apply and subcontract if awarded)	\$232,490

Important Dates

Renewals Due in eSNAPS	Monday, August 29 th
Bonus Project Letters of Intent	Monday, August 29 th
Scoring and Ranking	Between Sept 6 th & 12 th
Scores, Ranking, Acceptance or Denial by email	Tuesday, September 13 th
Full CoC Application with all attachments posted on HOPE website	Wednesday, September 28 th
Full CoC Application Due Date to HUD	Friday, September 30 th

Project Capacity, Review, and Ranking

	2021 CoC NOFO	2022 CoC NOFO
Demonstrates the use of objective criteria to review project applications requesting CoC Program funding	8	8
Demonstrates the use of CoC Program required system performance measures to review project applications requesting CoC Program funding	8	8
Uses comparable databases to evaluate domestic violence providers	2	1
Collects and analyzes data on rapid return to permanent housing and severity of barriers experienced by program participants	4	4
Demonstrates how the CoC is promoting racial equity when reviewing applications	1	2
Demonstrates that the CoC either reallocates funding from lower performing projects to create new higher performing projects or has a process in place to review performance for future re-allocation	4	4
Demonstrate the use of an objective ranking and selection process for project applications that is publicly announced by the CoC	3	3
POINTS AVAILABLE	30	30

HOPE Connections has a CoC Competition Page on our website

www.nwlahope.org

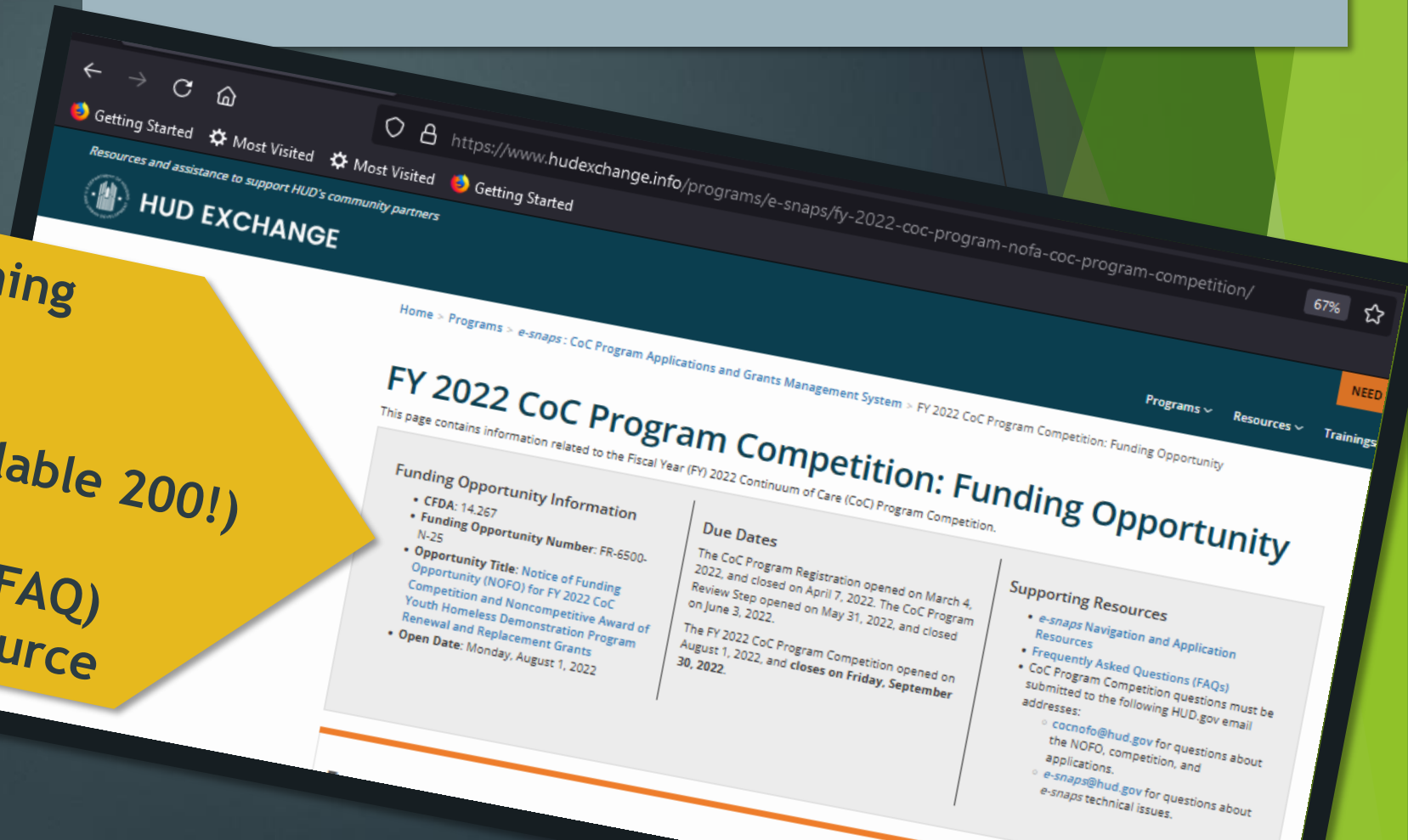
All of the following will be posted along with other relevant documents:

- FY2022 HUD CoC Competition NOFO
- Links to important websites
- 2022 Request for Proposals for Renewals and Bonus Project
 - -This will include Scoring Documents for both
- CoC Reallocation Policy, although no reallocation is anticipated
- CoC Scoring, Ranking, and Selection Policy

HUD CoC Competition Resource Page

<https://www.hudexchange.info/programs/e-snaps/fy-2022-coc-program-nofa-coc-program-competition/>

- The Instructions to Everything -But call me anyway
- The Points (Total points available 200!)
- Frequently Asked Questions (FAQ) which can be an amazing resource



National Alliance to End Homelessness CoC Competition Resource Page

<https://endhomelessness.org/resource/the-system-series/>

Really helps you understand
and care about
the “Suggestions”



YOU GOT THIS!!
But, don't hesitate to ask for help!!

Christa Pazzaglia
christa@nwlahope.org
Cell #: 318-208-7445