

Oregon Fusion LLC

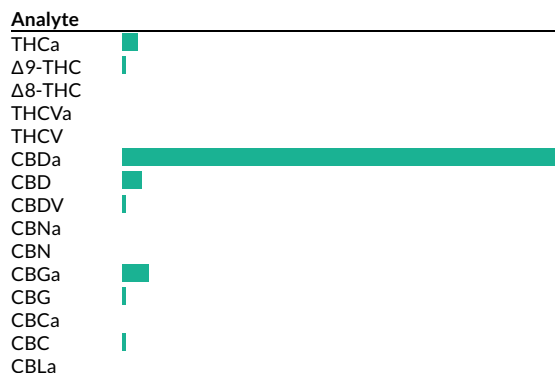
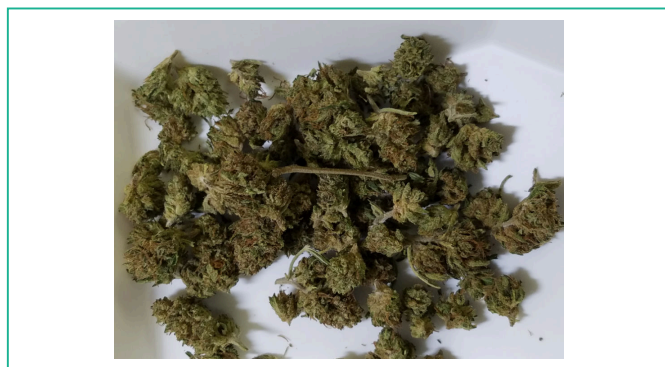
Sample: 1901CH0043.0188

Boring, OR 97009  
adam@oregonfusioncbd.com  
(914) 850-4645  
Lic. #AG-R1040925IHG

Strain: Lifter  
Batch#: ; Batch Size: - grams  
Sample Received: 01/04/2019; Report Created: 01/08/2019; Expires: 01/08/2020  
Harvest/Production Date:  
Sampling: Random; Environment: Room Temp

OF-Lifter

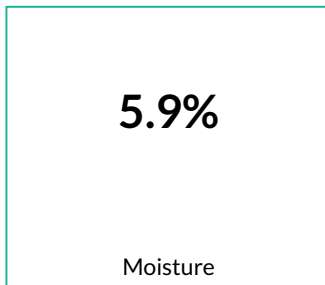
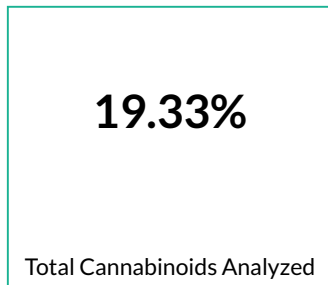
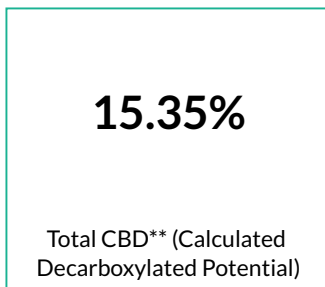
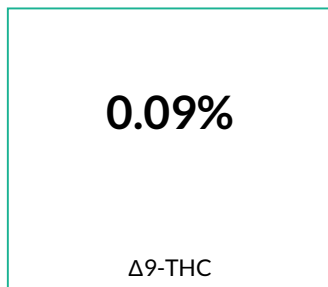
Plant, Flower - Cured, Outdoor  
Harvest Process Lot: ; METRC Batch: ; METRC Sample:



## Cannabinoids

321 HPLC3 20190105-1  
01/05/2019

Pass



Analyte	LOQ	Mass	Mass
	mg/g	%	mg/g
THCa		0.59	5.9
Δ9-THC		0.09	0.9
Δ8-THC	<LOQ	<LOQ	<LOQ
THCVa	<LOQ	<LOQ	<LOQ
THCV	<LOQ	<LOQ	<LOQ
CBDa		166.64	166.4
CBD		0.75	7.5
CBDV		0.03	0.3
CBNa	<LOQ	<LOQ	<LOQ
CBN	<LOQ	<LOQ	<LOQ
CBGa		1.01	10.1
CBG		0.11	1.1
CBCa	<LOQ	<LOQ	<LOQ
CBC		0.10	1.0
CBLa	<LOQ	<LOQ	<LOQ
<b>Total</b>		<b>19.33</b>	<b>193.3</b>

\*Total THC = THCa \* 0.877 + d9-THC. \*\*Total CBD = CBDa \* 0.877 + CBD. LOQ = Limit of Quantification; NR = Not Reported; ND = Not Detected

## Oregon Fusion LLC

## Sample: 1901CH0043.0188

Boring, OR 97009  
adam@oregonfusioncbd.com  
(914) 850-4645  
Lic. #AG-R1040925IHG

Strain: Lifter  
Batch#: ; Batch Size: - grams  
Sample Received: 01/04/2019; Report Created: 01/08/2019; Expires: 01/08/2020  
Harvest/Production Date:  
Sampling: Random; Environment: Room Temp

### OF-Lifter

Plant, Flower - Cured, Outdoor  
Harvest Process Lot: ; METRC Batch: ; METRC Sample:



### Terpenes

409 GCFID1 20190107-1  
01/07/2019

Analyte	Mass		LOQ		Analyte	Mass		LOQ	
	%	mg/g				%	%		
α-Pinene	0.07	0.7		<div style="width: 10px; height: 10px; background-color: green;"></div>	Isoborneol	<LOQ	<LOQ		
Camphene	<LOQ	<LOQ			Borneol	<LOQ	<LOQ		
Sabinene	<LOQ	<LOQ			Hexahydro Thymol	<LOQ	<LOQ		
(-) -β-Pinene	0.03	0.3		<div style="width: 10px; height: 10px; background-color: green;"></div>	α-Terpineol	0.01	0.1		<div style="width: 10px; height: 10px; background-color: green;"></div>
β-Myrcene	0.26	2.6		<div style="width: 30px; height: 10px; background-color: green;"></div>	γ-Terpineol	<LOQ	<LOQ		
α-Phellandrene	<LOQ	<LOQ			Nerol	<LOQ	<LOQ		
δ-3-Carene	<LOQ	<LOQ			Pulegone	<LOQ	<LOQ		
α-Terpinene	<LOQ	<LOQ			Geraniol	<LOQ	<LOQ		
p-Isopropyltoluene	<LOQ	<LOQ			Farnesene	0.02	0.2		<div style="width: 10px; height: 10px; background-color: green;"></div>
δ-Limonene	0.03	0.3		<div style="width: 10px; height: 10px; background-color: green;"></div>	α-Cedrene	<LOQ	<LOQ		
Eucalyptol	<LOQ	<LOQ			β-Caryophyllene	0.26	2.6		<div style="width: 40px; height: 10px; background-color: green;"></div>
Ocimene 1	<LOQ	<LOQ			α-Humulene	0.10	1.0		<div style="width: 20px; height: 10px; background-color: green;"></div>
Ocimene 2	0.02	0.2		<div style="width: 10px; height: 10px; background-color: green;"></div>	Valencene	0.02	0.2		<div style="width: 10px; height: 10px; background-color: green;"></div>
γ-Terpinene	<LOQ	<LOQ			Geranyl Acetate	0.27	2.7		<div style="width: 40px; height: 10px; background-color: green;"></div>
Sabinene Hydrate	<LOQ	<LOQ			cis-Nerolidol	0.04	0.4		<div style="width: 10px; height: 10px; background-color: green;"></div>
Fenchone	<LOQ	<LOQ			β-Nerolidol	0.16	1.6		<div style="width: 20px; height: 10px; background-color: green;"></div>
Terpinolene	<LOQ	<LOQ			trans-Nerolidol	0.02	0.2		<div style="width: 10px; height: 10px; background-color: green;"></div>
Linalool	0.04	0.4		<div style="width: 10px; height: 10px; background-color: green;"></div>	Caryophyllene Oxide	0.02	0.2		<div style="width: 10px; height: 10px; background-color: green;"></div>
Endo-Fenchyl Alcohol	0.01	0.1		<div style="width: 10px; height: 10px; background-color: green;"></div>	(-) -Guaiol	0.04	0.4		<div style="width: 10px; height: 10px; background-color: green;"></div>
Camphor	<LOQ	<LOQ			Cedrol	0.01	0.1		<div style="width: 10px; height: 10px; background-color: green;"></div>
(-) -Isopulegol	<LOQ	<LOQ			(-) -α-Bisabolol	0.14	1.4		<div style="width: 20px; height: 10px; background-color: green;"></div>

### Primary Aromas



Method: GC-FID; based on dry weight; LOQ = Limit of Quantification; NR = Not Reported; ND = Not Detected

Oregon Fusion LLC

Sample: 1901CH0043.0188

Boring, OR 97009  
adam@oregonfusioncbd.com  
(914) 850-4645  
Lic. #AG-R1040925IHG

Strain: Lifter  
Batch#: ; Batch Size: - grams  
Sample Received: 01/04/2019; Report Created: 01/08/2019; Expires: 01/08/2020  
Harvest/Production Date:  
Sampling: Random; Environment: Room Temp

OF-Lifter

Plant, Flower - Cured, Outdoor  
Harvest Process Lot: ; METRC Batch: ; METRC Sample:



## Quality Control Data

Analytical Batch ID	QC Sample ID	Assay Name	QC Category Name
321 HPLC3 20190105-1	PMB01041901F	Cannabinoids	Blank

### QC Notes

None

Compounds	Blank Result	Blank Max % (LOQ)	Blank Result %	Notes
THCa	0	0.05	<LOQ	-
Δ9-THC	0	0.05	<LOQ	-
CBDa	0	0.05	<LOQ	-
CBD	0	0.05	<LOQ	-



## Oregon Fusion LLC

Sample: 1901CH0043.0188

Boring, OR 97009  
adam@oregonfusioncbd.com  
(914) 850-4645  
Lic. #AG-R1040925IHG

Strain: Lifter  
Batch#: ; Batch Size: - grams  
Sample Received: 01/04/2019; Report Created: 01/08/2019; Expires: 01/08/2020  
Harvest/Production Date:  
Sampling: Random; Environment: Room Temp

## OF-Lifter

Plant, Flower - Cured, Outdoor  
Harvest Process Lot: ; METRC Batch: ; METRC Sample:



## Quality Control Data

Analytical Batch ID	QC Sample ID	Assay Name	QC Category Name
321 HPLC3 20190105-1	PLCS01041901F	Cannabinoids	Lab Control Sample

### QC Notes

None

Compounds	LCS Result (%)	LCS Spike	LCS % Rec	% Limits	Notes
THCa	4.55	4.45	102.25	70 - 130	-
Δ9-THC	3.55	3.47	102.31	70 - 130	-
CBDa	5.49	5.69	96.49	70 - 130	-
CBD	3.66	3.55	103.1	57 - 143	-



## Oregon Fusion LLC

Sample: 1901CH0043.0188

Boring, OR 97009  
adam@oregonfusioncbd.com  
(914) 850-4645  
Lic. #AG-R1040925IHG

Strain: Lifter  
Batch#: ; Batch Size: - grams  
Sample Received: 01/04/2019; Report Created: 01/08/2019; Expires: 01/08/2020  
Harvest/Production Date:  
Sampling: Random; Environment: Room Temp

## OF-Lifter

Plant, Flower - Cured, Outdoor  
Harvest Process Lot: ; METRC Batch: ; METRC Sample:



## Quality Control Data

Analytical Batch ID	QC Sample ID	Assay Name	QC Category Name
321 HPLC3 20190105-1	PMS01041901F	Cannabinoids	Spike

### QC Notes

None

Compounds	LOQ	Matrix Duplicate % RPD	Duplicate RPD Notes	Matrix Spike % Rec	% Limits	Notes
THCa	0.02	4.69	<20	329	70 - 130	Above Limit Range
Δ9-THC	0.02	0	<20	99	70 - 130	-
CBDa	0.02	0	<20	80	70 - 130	-
CBD	0.02	<LOQ	<LOQ	90	70 - 130	-