

ANTARCTIC TREATY SYSTEM

1. + South Orkney Islands in the Antarctic Treaty System. 60° 41' S., 44° 82' W. Cleaned by White Hats on 13 July 2020.



South Orkney Islands



2. = Nassau Island with entrance from Andros Island (AUTEC range)—used for child trafficking & money laundering.

25° 12' N., 77° 28' W.

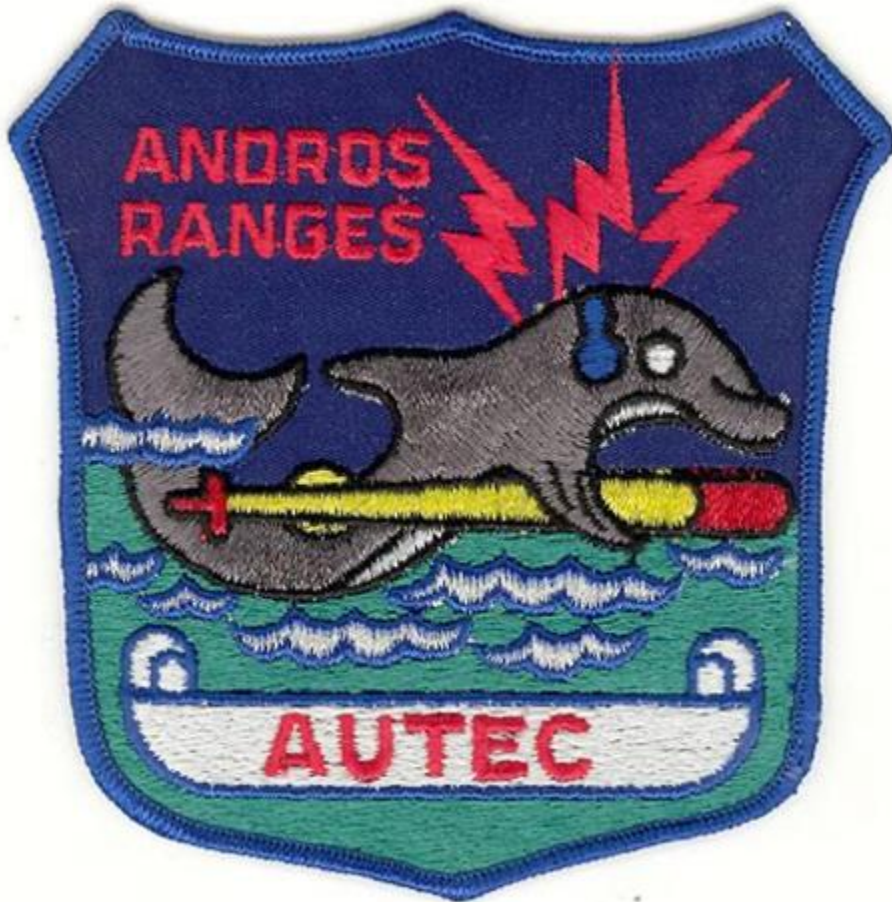
THE CARIBBEAN



The Bahamas (northern Caribbean)



Nassau Island with entrance from Andros Island (AUTEC range)





3. + Cayman Islands. Major Hub for human & child trafficking; drug running & money laundering. This hub was the key point for all traffic from the Virgin Islands, Puerto Rico, Belize, Dominican Republic, Haiti & South America. 19° 41' N., 79° 51' W. Cleaned by the White Hats October 2019.

CAYMAN ISLANDS



Cayman Islands





4. = Grenada Island, West Indies
Under the islands, $12^{\circ} 0' N.$, $61^{\circ} 47' W.$

Grenada

- Parish Boundary
- Road
- River
- ★ National Capital
- Parish Capital
- City or Town

0 5 10 KM
0 5 10 Miles

© 2018 Geology.com





Grenada Island





500638653

gettyimages | 25 YEARS
DE AGOSTINI PICTURE LIBRARY

SOUTH AMERICA



Provinces of Argentina

Provinces of Argentina

1. Tucumán

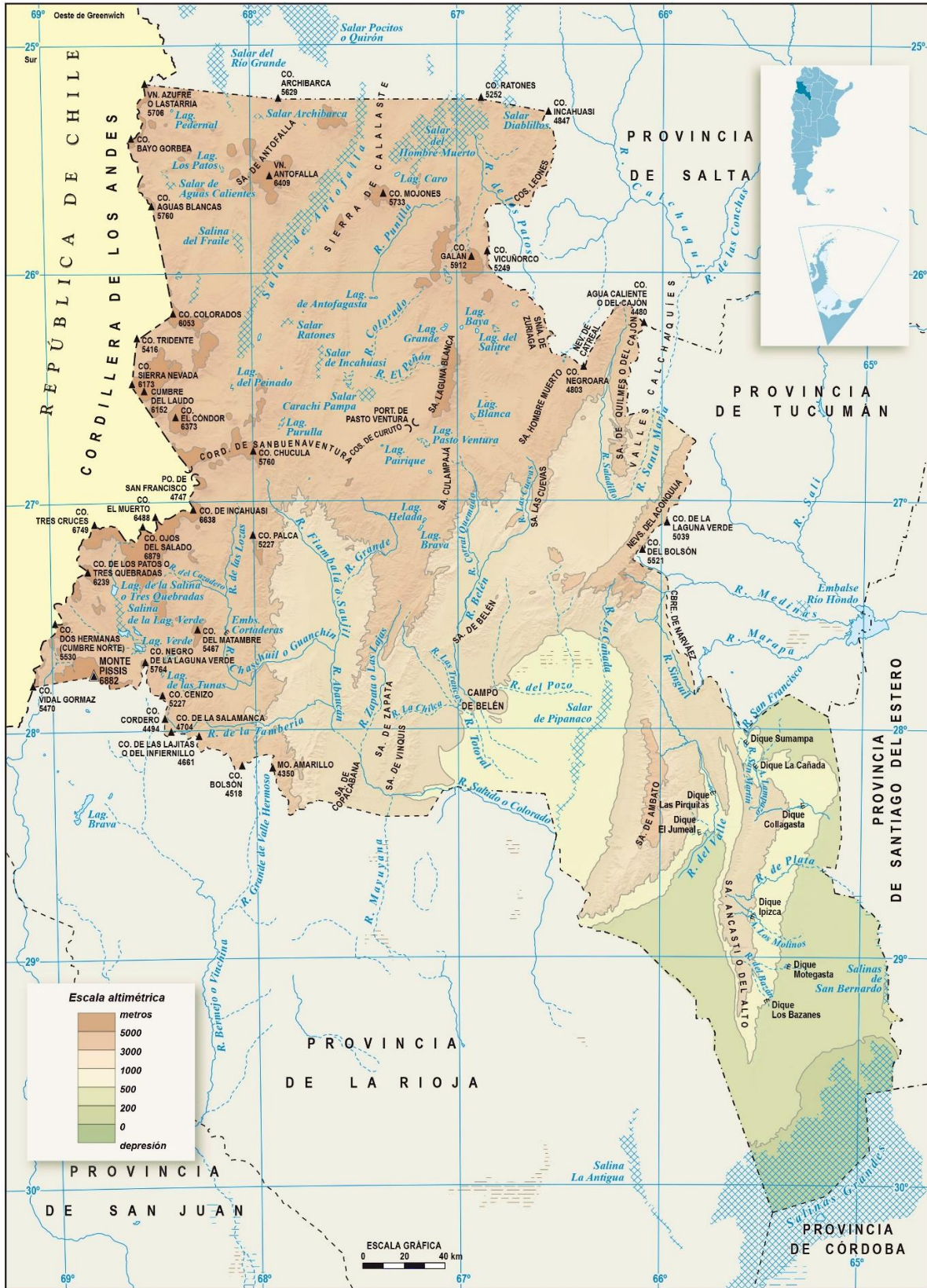


5. = Area Sierra de Calalaste—North of the Province of Catamarca, Argentina.

Province of Catamarca, Argentina



**Sierra de Calalaste,
Catamarca Province, Argentina**



Es propiedad Ley 11.723
EDICIÓN SEPTIEMBRE 2016

Provincia de CATAMARCA
Mapa Físico



Sierra de Calalaste, Catamarca Province, Argentina

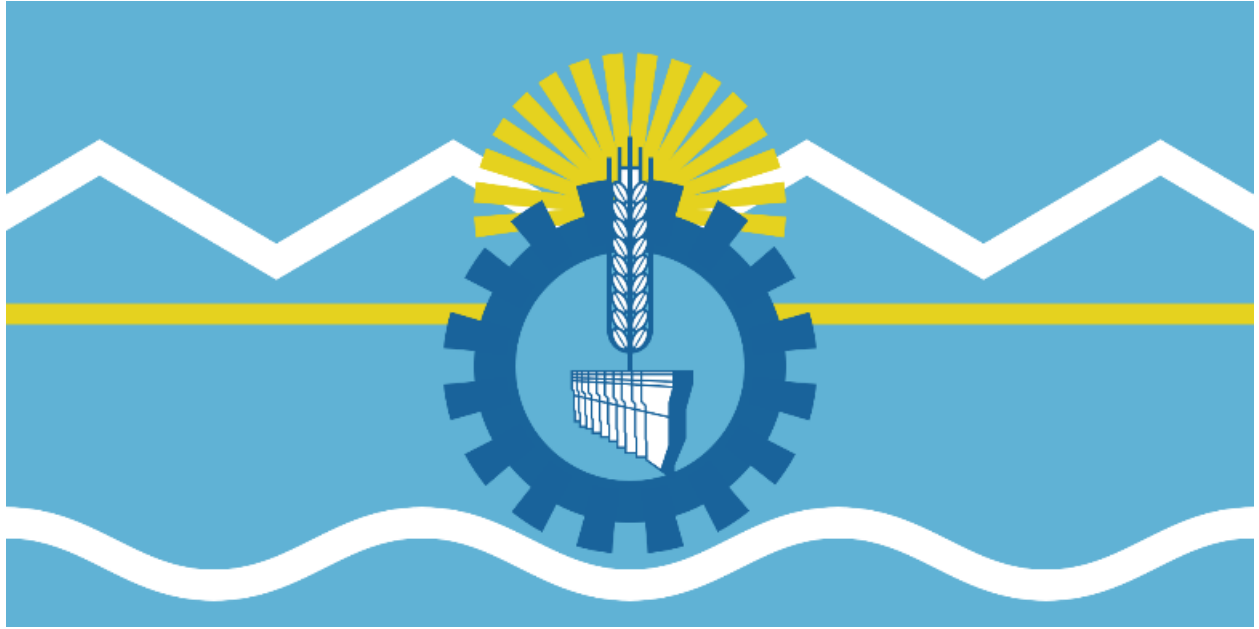


6. + North of Arroyo Apeleg, Chubut Province, Argentina. $\sim 44^{\circ} 58' \text{ S.}, 70^{\circ} 05' \text{ W.}$

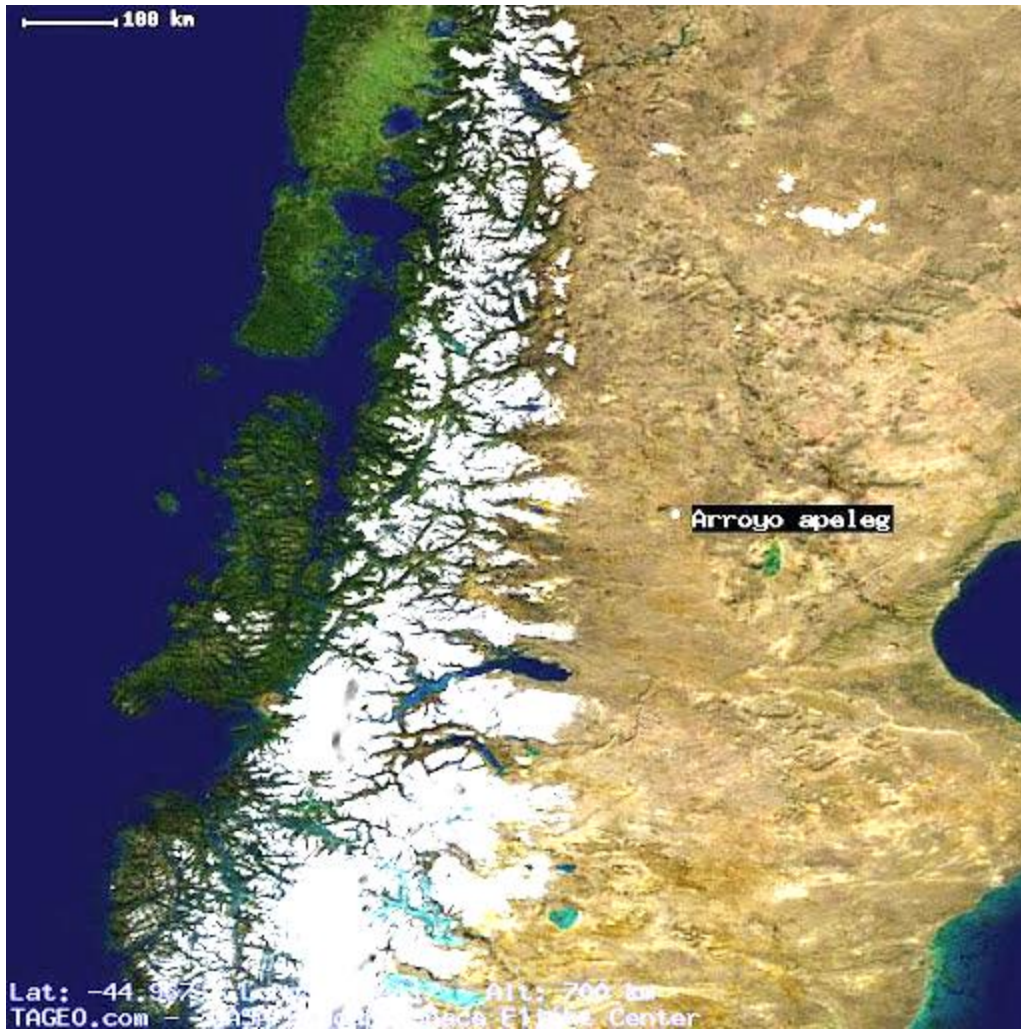
Cleaned by the White Hats by January 2019.

Chubut Province, Argentina





**Arroyo Apeleg, Chubut Province,
Argentina (geo map)**



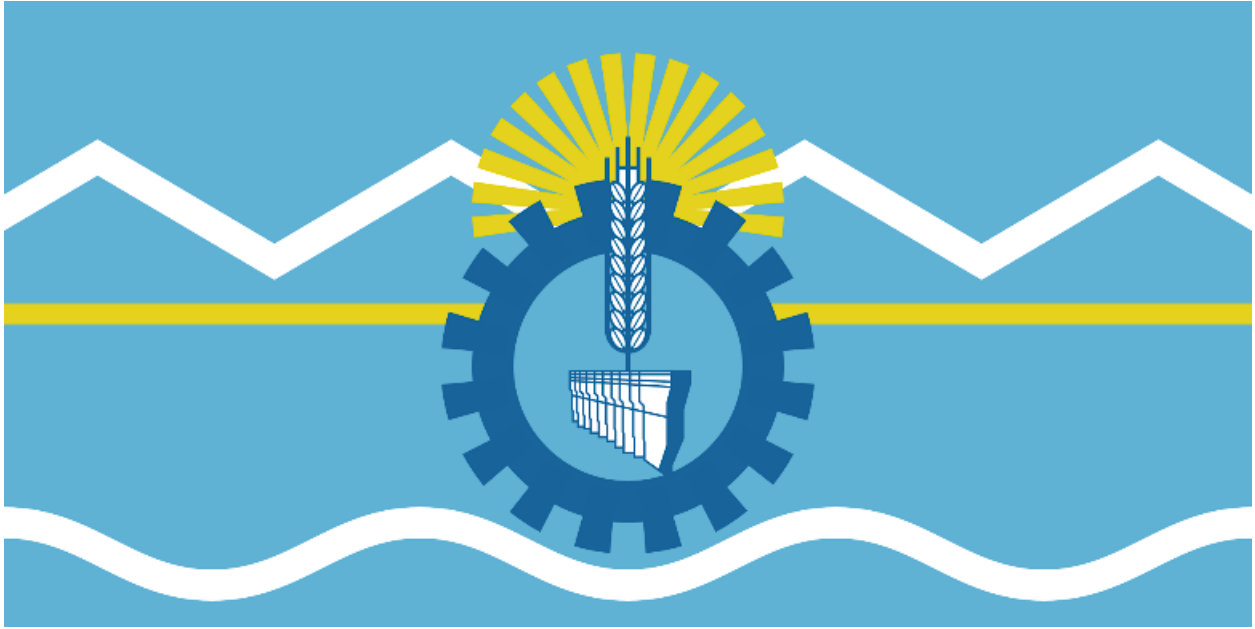
**Arroyo Apeleg, Chubut Province,
Argentina**



**7. + Area Lago Futalaufquen—West Side of Northern Chubut Province.
~42° 48' S., 71° 42' W. Cleaned by the White Hats ~January 2020.**

Chubut Province, Argentina





**Lago Futalaufquen in
Los Alerces National Park,
Chubut Province, Argentina**



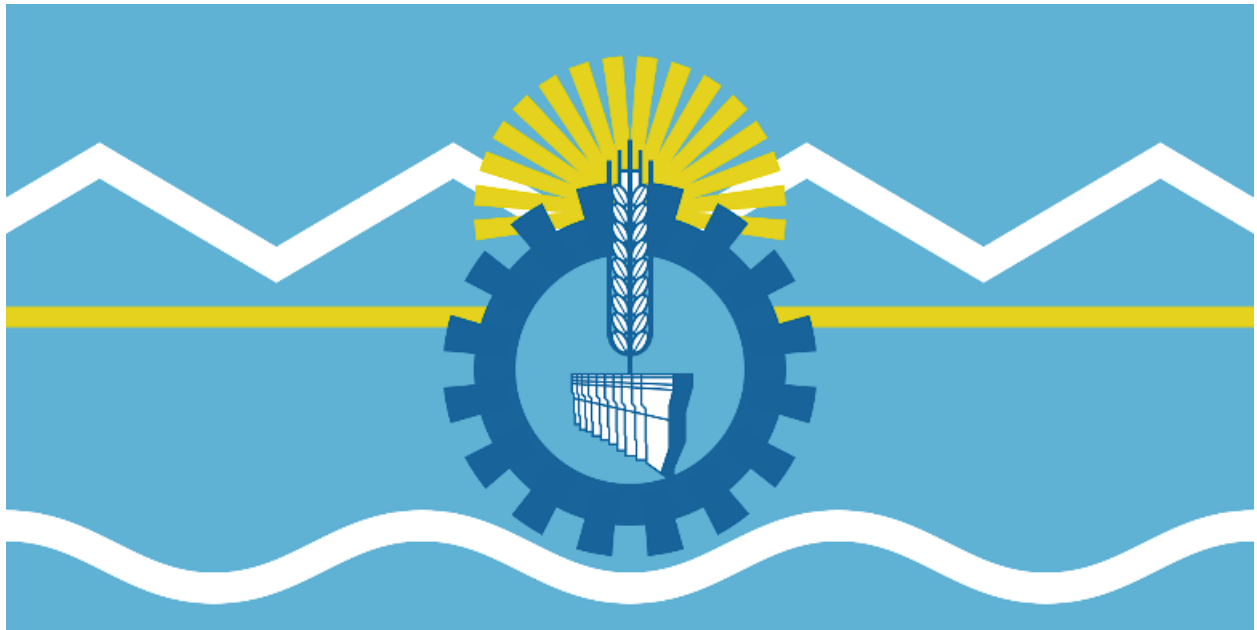
**Lago Futalaufquen in
Los Alerces National Park,
Chubut Province, Argentina**



8. + Area Río Pico, Chubut Province, Argentina. $\sim 44^{\circ} 10' \text{ S.}, 71^{\circ} 22' \text{ W.}$

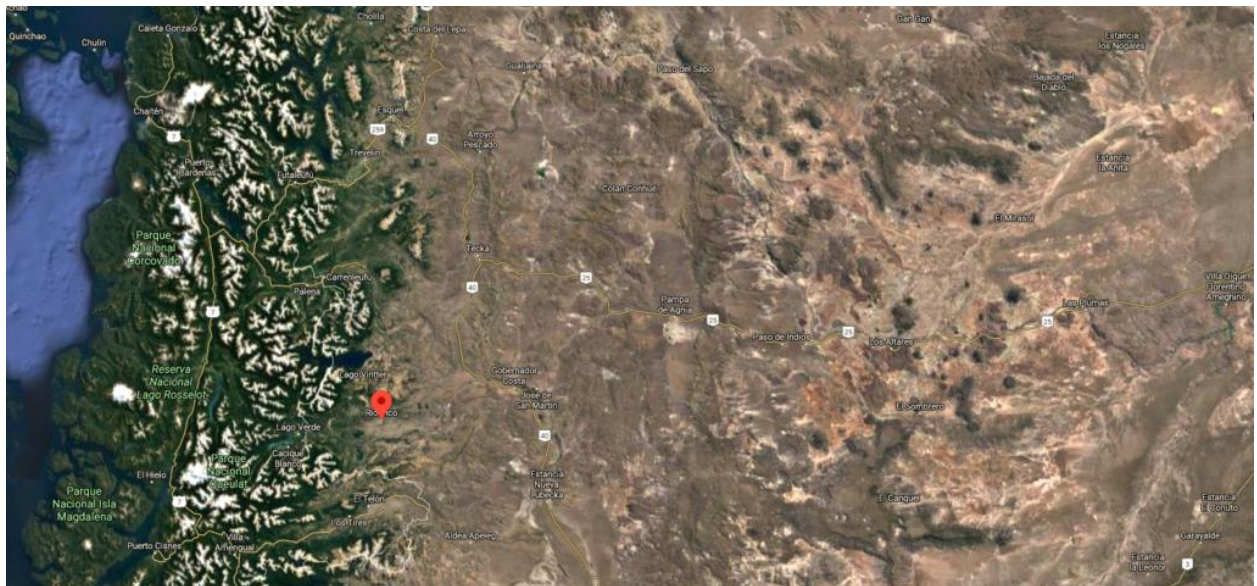
Chubut Province, Argentina





Rio Pico, Chubut Province, Argentina

Aerial photo of Rio Pico,





Chubut Province, Argentina

Rio Pico,

Chubut Province, Argentina



9. + Area Villa de Maria, Northern part of Cordoba Province, Argentina. ~32° 25' S., 63° 14' W.

Cordoba Province, Argentina



**Villa Maria, Cordoba Province,
Argentina**



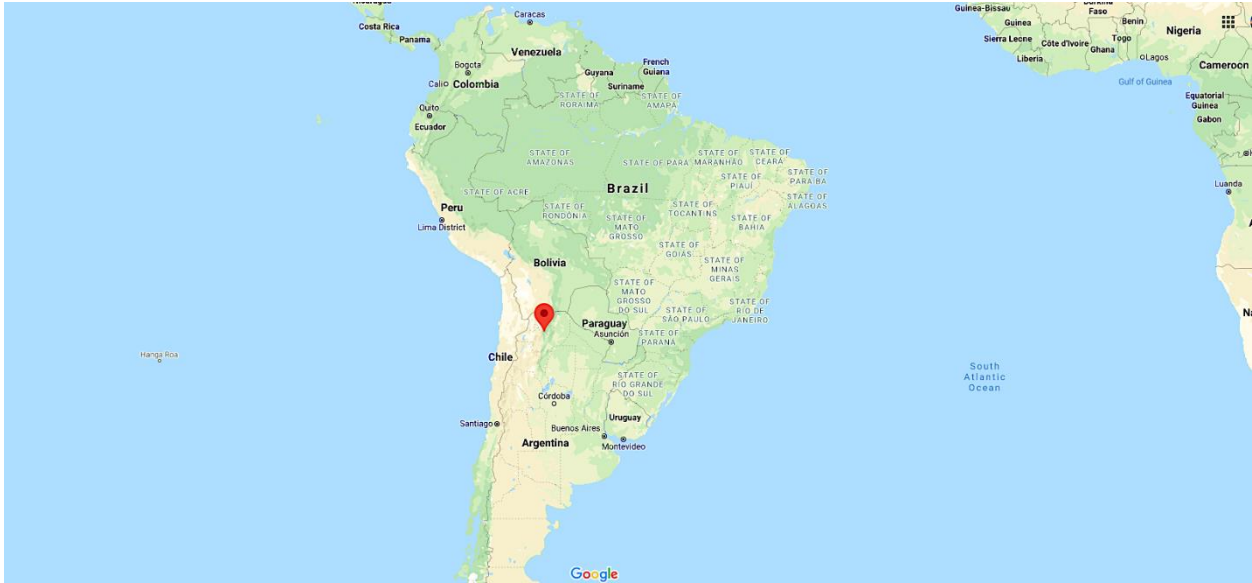
Villa Maria, Cordoba Province, Argentina





10. + Jujuy Province, Argentina, South America

Jujuy Province



Jujuy Province, Argentina





Jujuy Province, Argentina



11. = Area Cerro Aconcagua on the Argentinean side. 32° 39' S., 70° 0' W.

Mendoza Province, Argentina





**Mount Aconcagua,
Mendoza Province, Argentina**



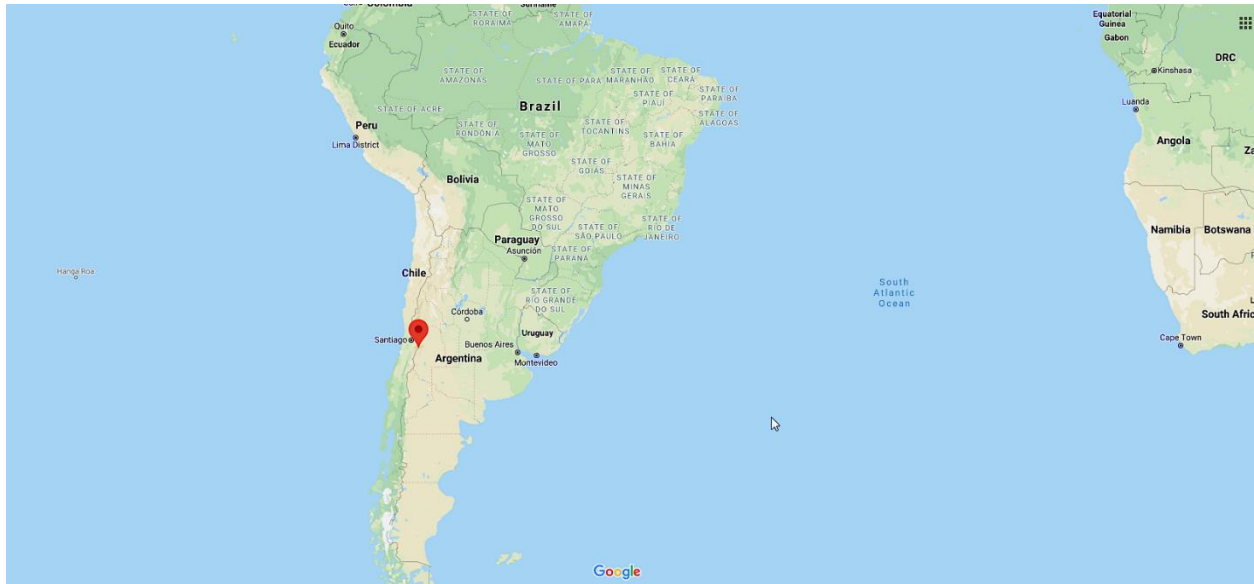
Mount Aconcagua

Mendoza Province, Argentina



**12. = North of the Maipo Volcano, but less high than the volcano itself.
~34° 9' S., 69° 50' W.**

Mendoza Province, Argentina



Maipo Volcano, Mendoza Province, Argentina





Maipo Volcano, Mendoza Province
Aerial view



Maipo Volcano, Mendoza Province, Argentina





13. + Area of Cafayate town

~26° 3' S., 66° 2' W.

Salta Province, Argentina





Cafayate, Salta Province, Argentina



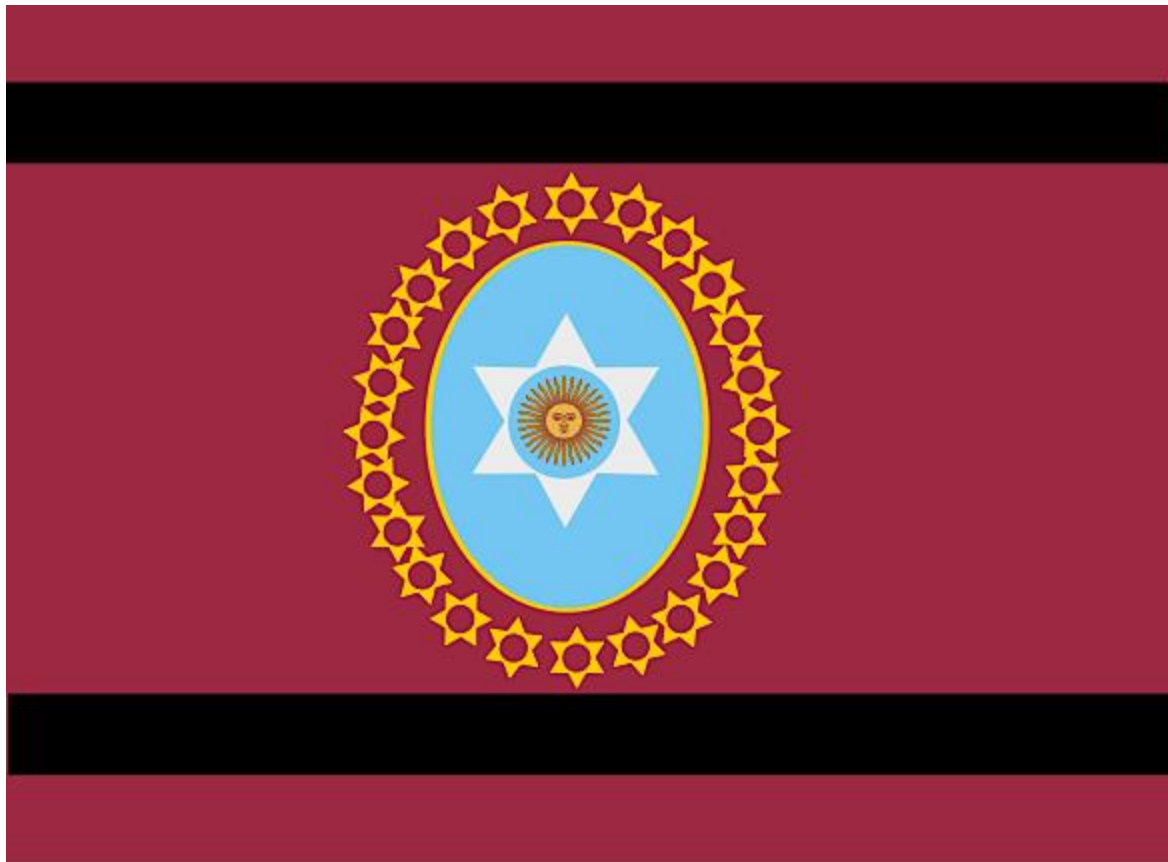


14. + San Antonio de los Cobres, Salta Province, Argentina. 24° 12' S., 67° 17' W.

Cleaned by White Hats 1 April 2020.

Salta Province, Argentina





San Antonio de los Cobres
Salta Province, Argentina



San Antonio de los Cobres
Salta Province, Argentina



15. + San Juan, North West from province Area Cerro Las Tórtolas – Base #1
~29° 54' S., 69° 53' W.

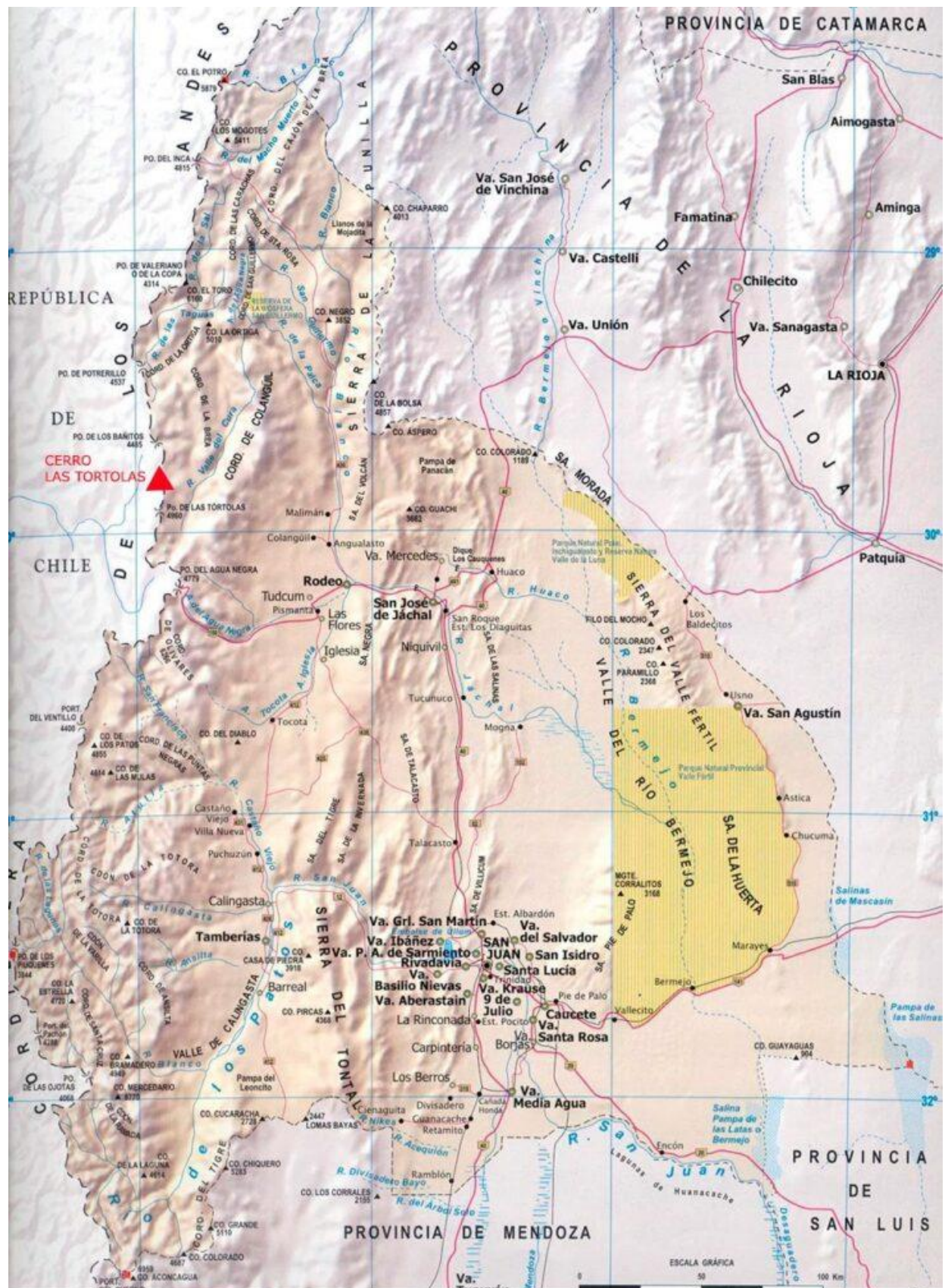
16. + San Juan, North West from province Area Cerro Las Tórtolas – Base #2

**San Juan Province,
Argentina**





Cerro Las Tórtolas
San Juan Province, Argentina

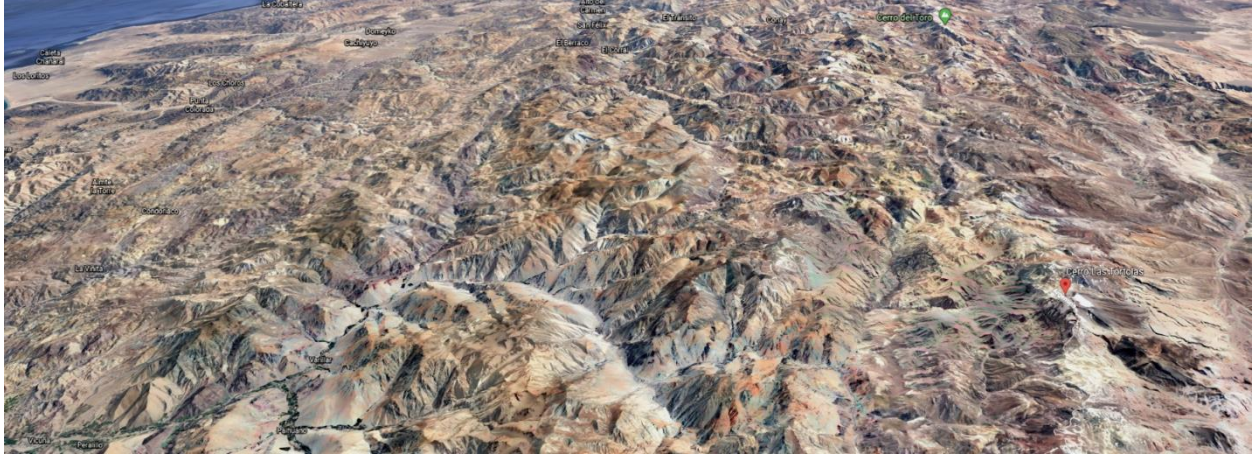


Centro Cultural Argentino de Montaña

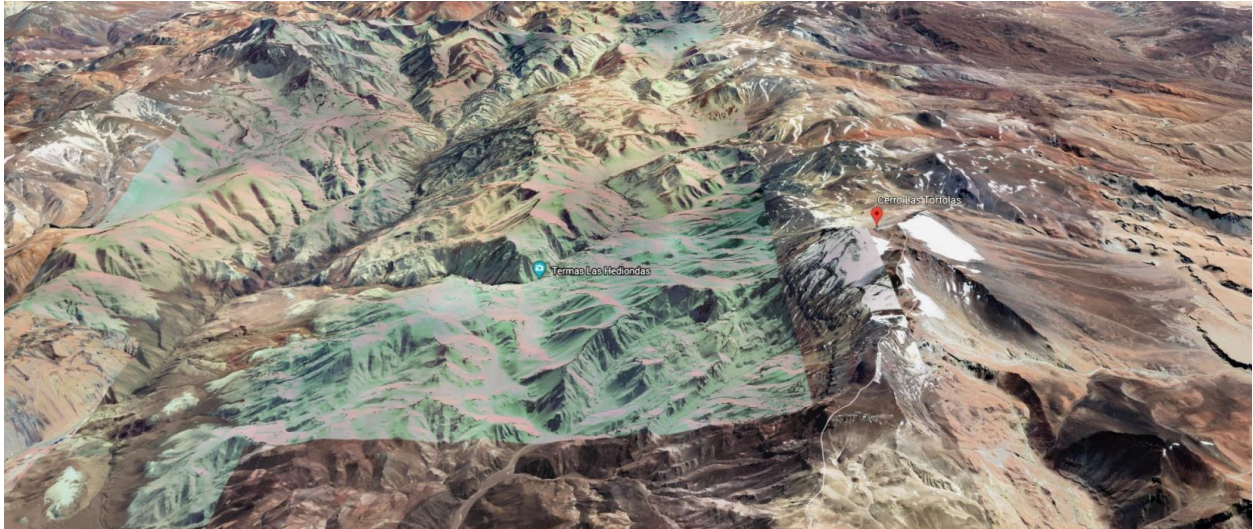
Cerro Las Tórtolas

Aerial Map

Long view



Closer view



San Juan Province
NW from Cerro Las Tórtolas





Cerro Las Tórtolas
San Juan Province, Argentina





17. + Falkland Islands, a British Territory off the coast of Argentina. ~51° 55' S., 60° 24' W.

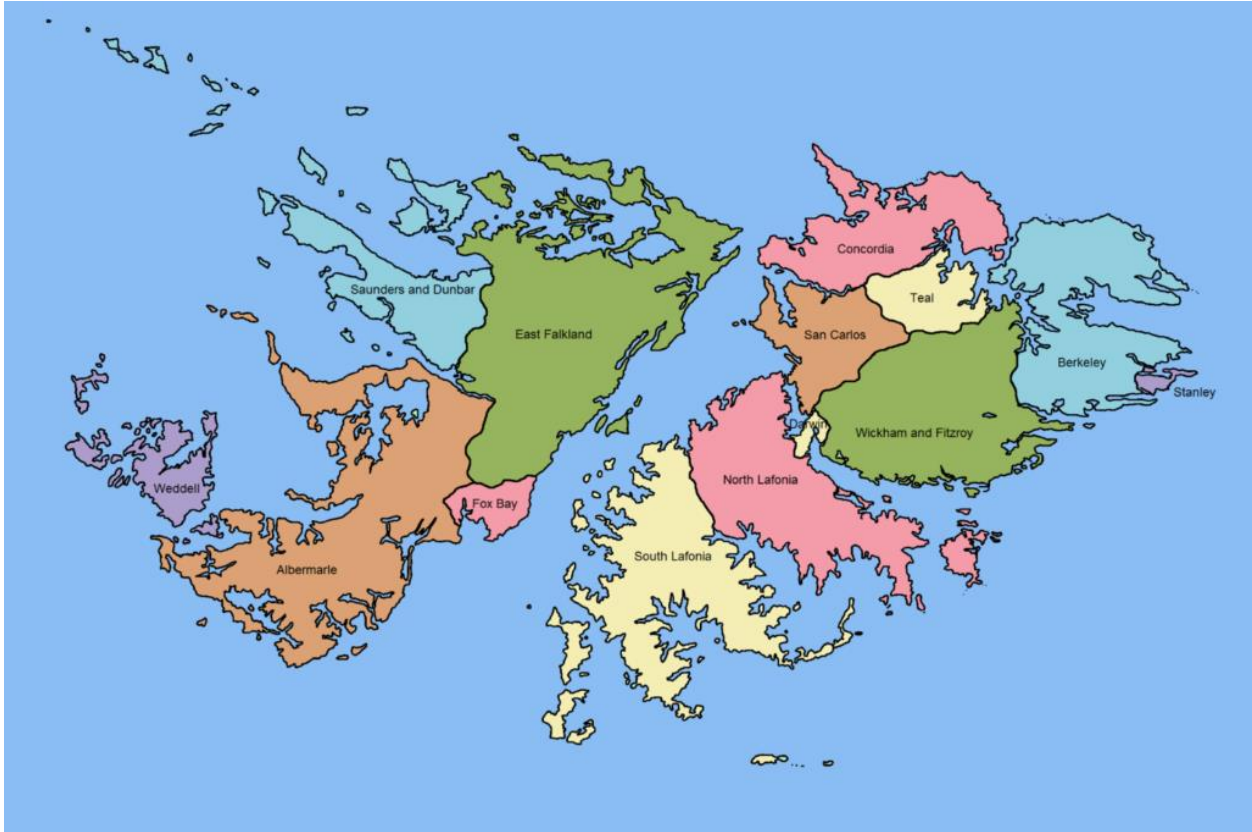
Cleaned by the White Hats on 22 July 2020.



Falkland Islands – map



Falkland Islands Counties



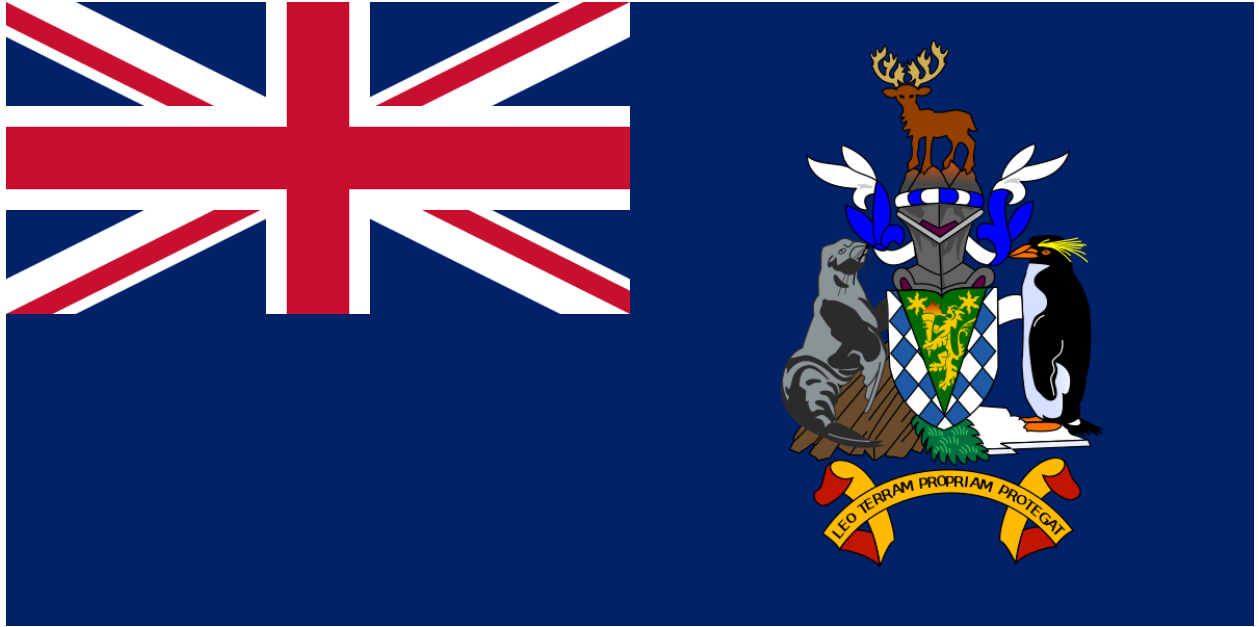
**Falkland Islands, a British Territory
off the coast of Argentina
(DUMB is under NE big island)**



18. = South Georgia Island.
~54° 19' S., 36° 36' W.

South Georgia Island, in the South Sandwich Islands





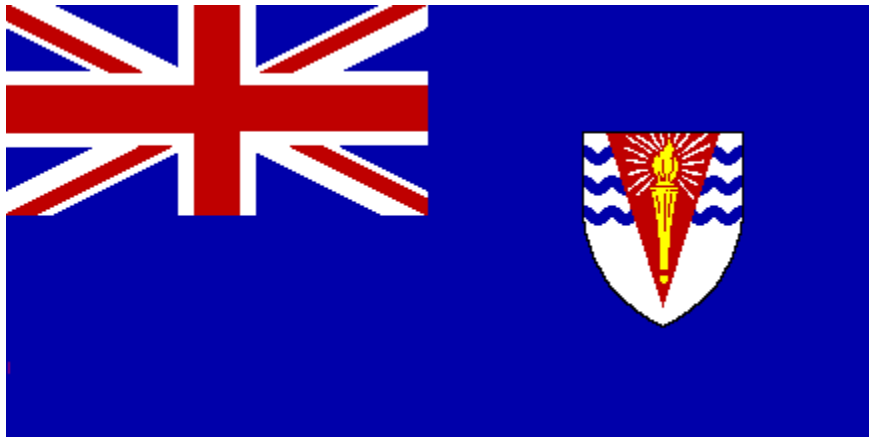
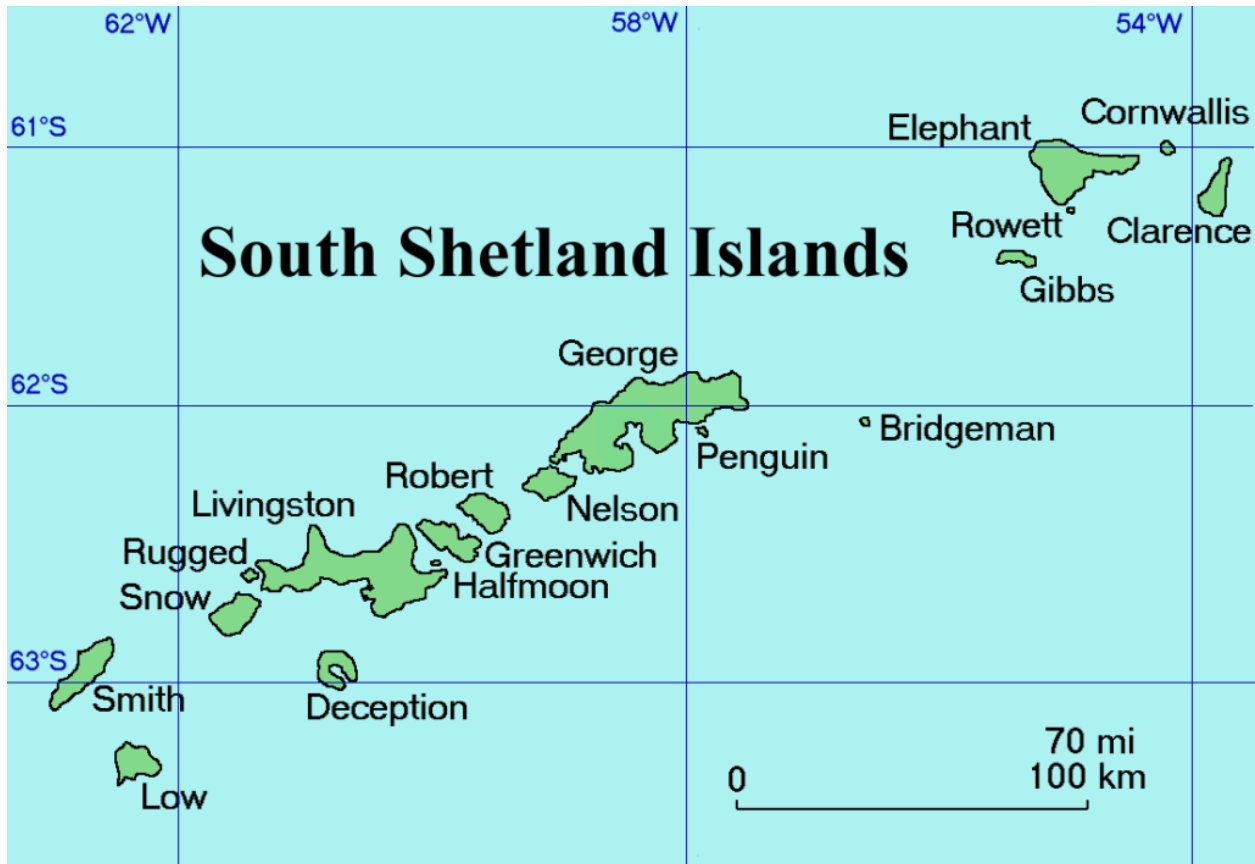
South Georgia Island





19. = South Shetland Islands, a British Territory
~62° 11' S., 58° 59' W.





South Shetland Islands



South Shetland Islands



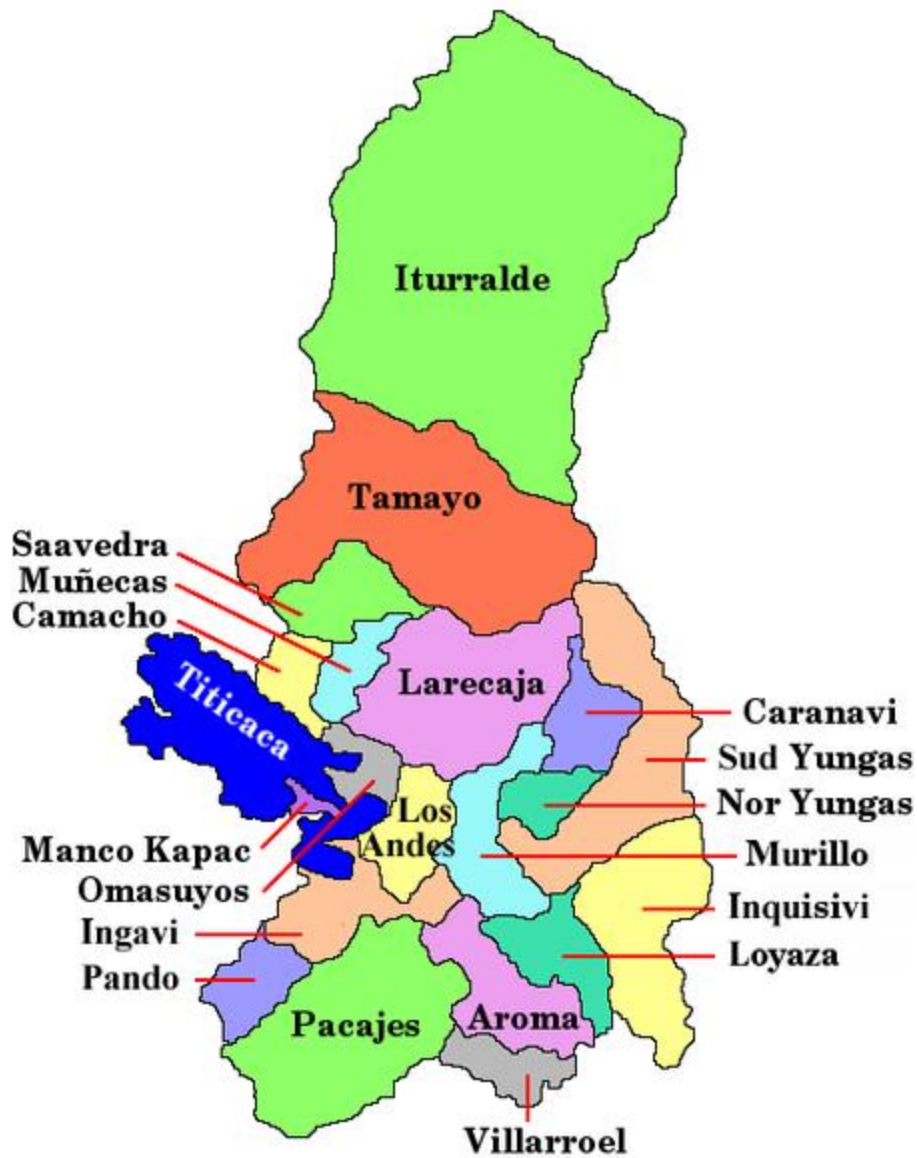
BOLIVIA



20. = Sorata, Larecaja, Bolivia. Near Lake Titicaca. Jesuit base. ~15° 46' S., 68° 38' W.

Larecaja Province in Department of LaPaz, Bolivia





Sorata, Larecaja, Bolivia



BRAZIL



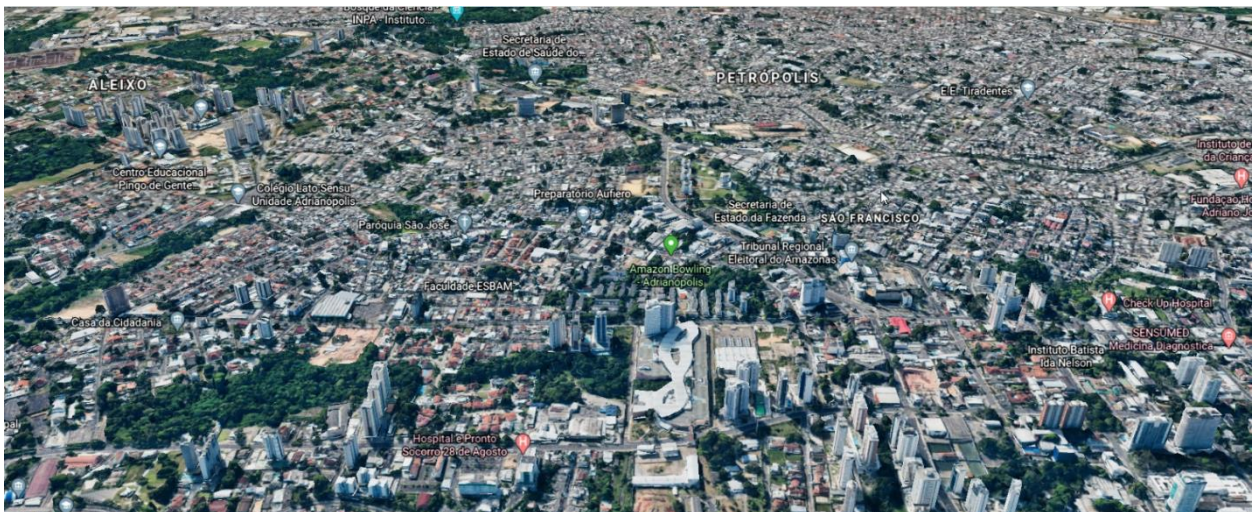
21. = Manaus, Amazonas, Brazil
 ~3° 2' S., 60° 2' W.

Province of Amazonas, Brazil





City of Manaus in Amazonas Province, Brazil



22. = Ponta Grossa, State of Parana, Brazil
~25° 3' S., 50° 11' W.

State of Paraná, Brazil



City of Ponta Grossa, State of Paraná, Brazil





Ponta Grossa, State of Paraná, Brazil





Ponta Grossa, State of Paraná, Brazil





23. = Roncador, State of Paraná, Brazil
~24° 35' S., 52° 16' W.

State of Paraná, Brazil



Roncador, a municipality of the State of Paraná, Brazil



Roncador, Paraná, Brazil



24. + Corcovado, Rio de Janeiro, Brazil

22° 57' S., 43° 12' W.

Cleaned by the White Hats March 2020.



Corcovado in Rio de Janeiro, Brazil



Corcovado in Rio de Janeiro, Brazil



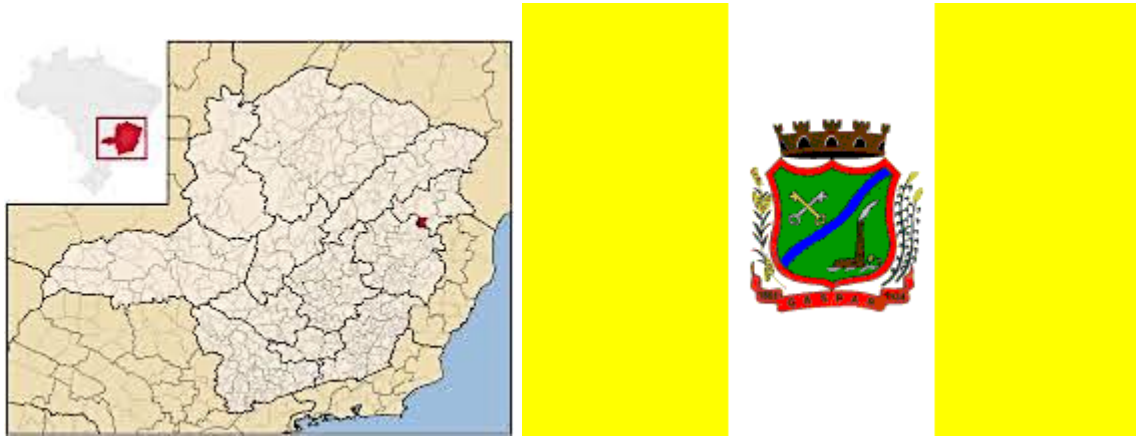
25. = Gaspar, Santa Catarina, Brazil

26° 56' S., 48° 57' W.

State of Santa Catarina, Brazil



Gaspar, Santa Catarina, Brazil



Gaspar, Santa Catarina, Brazil





Gaspar, Santa Catarina, Brazil

26. = Joinville, Santa Catarina, Brazil
~26° 18' S., 48° 50' W.

State of Santa Catarina, Brazil



Joinville, Santa Catarina, Brazil



Joinville, Santa Catarina, Brazil





Joinville, Santa Catarina, Brazil



27. = Sao Paulo, Sao Paulo, Brazil,
near Concepiao.
~23° 32' S., 46° 37' W.

State of Sao Paulo, Brazil



Sao Paulo, State of Sao Paulo, Brazil





Sao Paulo, State of Sao Paulo, Brazil



The states of Santa Catarina and Parana, Brazil are honeycombed by a network of Atlantean tunnels that lead to subterranean cities.



Sao Paulo, State of Sao Paulo, Brazil



Sao Paulo, State of Sao Paulo, Brazil



CHILE



28. + Diego de Almagro, Chanaral, Chile
 ~26° 21' S., 70° 2' W.

Province of Chanaral, Chile



Diego de Almagro, Chanaral, Chile



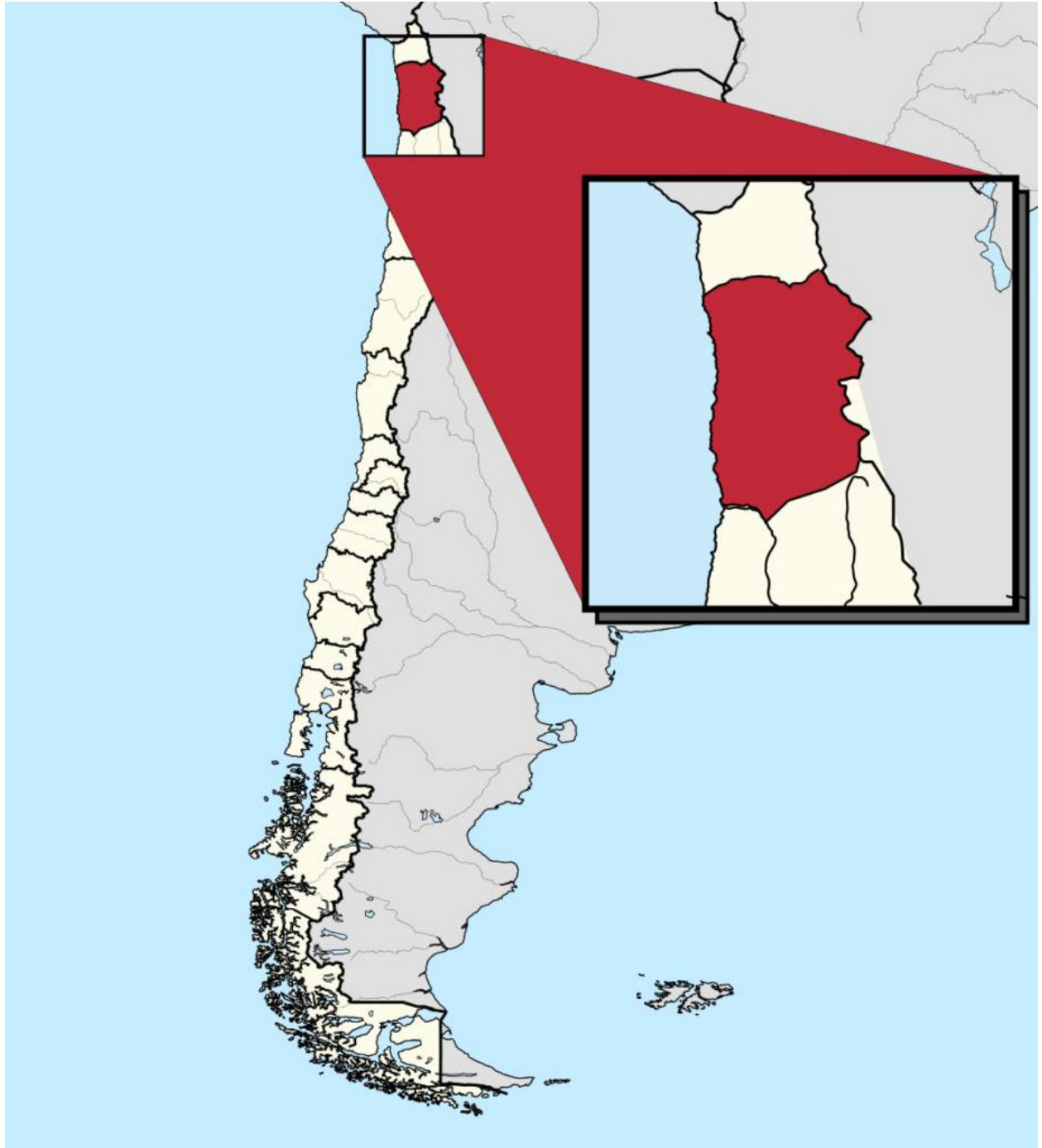


Diego de Almagro, Chanaral, Chile





29. + Iquique, Province of Iquique,
Tarapacá Region, Chile
~19° 58' S., 68° 7' W.
Cleaned by the White Hats on 2 April 2020.
Tarapacá Region, Chile



**Province of Iquique,
Tarapacá Region, Chile**



CUADRO DE DISTANCIAS

DISTANCIAS DE LA PROVINCIA DESDE IQUIQUE A:

| | |
|---------------|----------|
| ADMIRACION | 43.0 Km |
| SANTA LUISA | 47.0 Km |
| POZO ALMONTE | 82.0 Km |
| HUARA | 72.0 Km |
| ESPA | 203.0 Km |
| ARICA | 205.0 Km |
| SIBIRACIA | 102.0 Km |
| CHILANCA | 148.0 Km |
| PICHUENCA | 222.0 Km |
| OLUSA | 246.0 Km |
| COCHANI | 142.0 Km |
| PITACANI | 178.0 Km |
| CAMILLA | 182.0 Km |
| HAMIRA | 126.0 Km |
| LA TRIANA | 72.0 Km |
| LA HUAYCA | 87.0 Km |
| MATELA | 109.0 Km |
| PICA | 114.0 Km |
| PINTADOS | 16.0 Km |
| HUACACHINDO | 220.0 Km |
| LAGO DEL INCA | 174.0 Km |
| SUNLAGUA | 214.0 Km |



Mapa físico Región de Tarapacá

Physical map of the region of Tarapaca



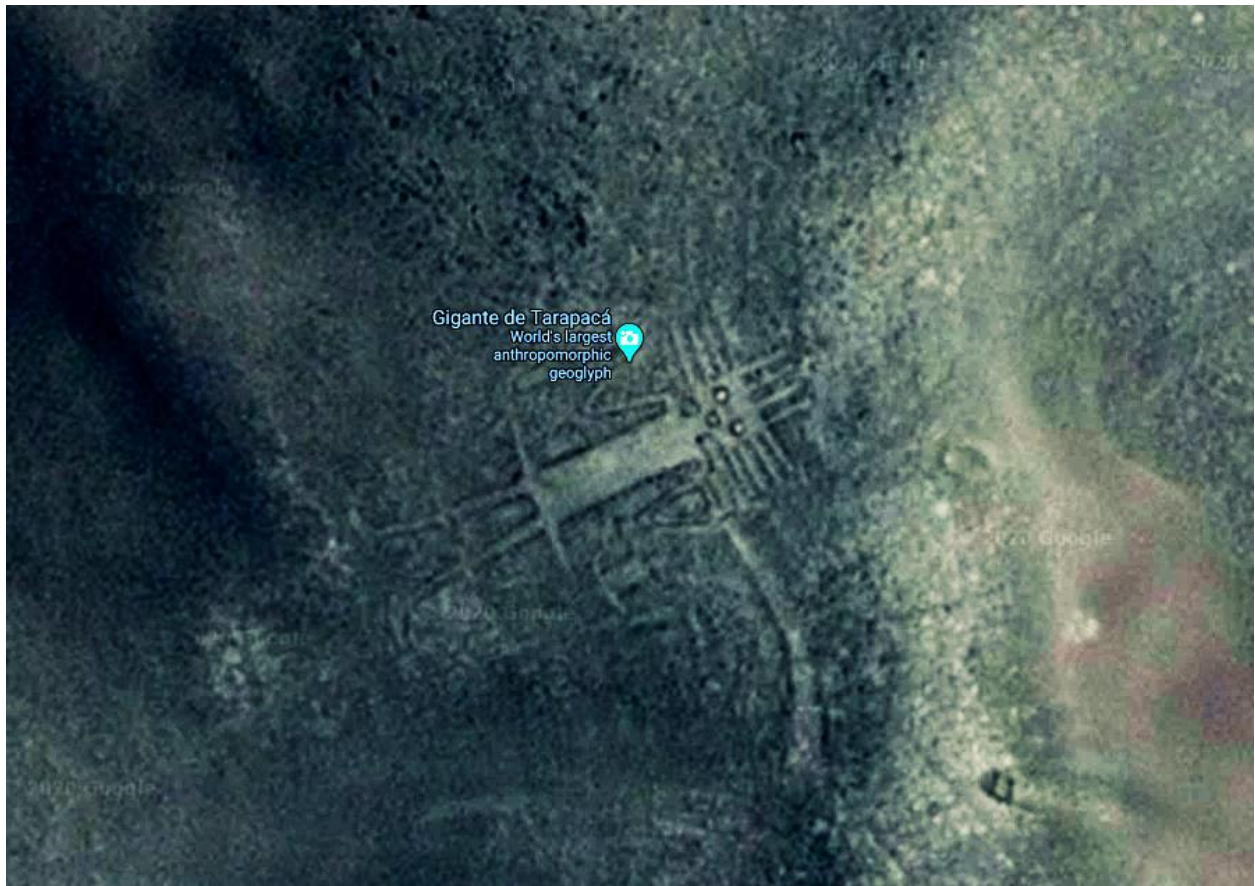


Iquique, Tarapacá Region, Chile





Iquique, Tarapacá Region, Chile



Atacama Giant is near this region.

Many of these ancient markings have ancient tunnels under them.

COLUMBIA



30. + Betania, Antioquia, Colombia

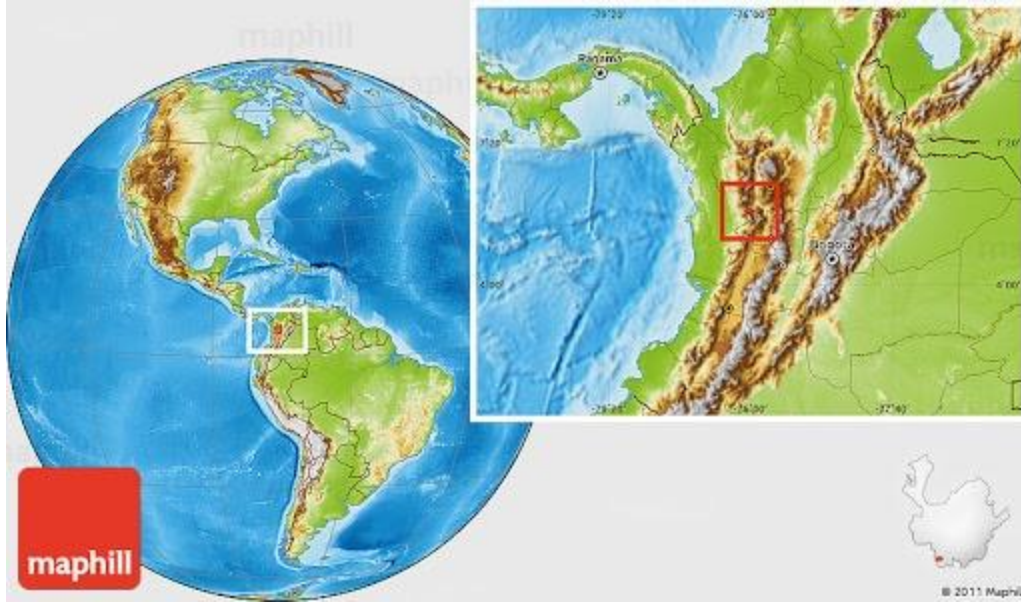
5° 40' N., 76° 1' W.

Cleaned by White Hats on 2 April 2020.

Department of Antioquia, Colombia



Betania, Antioquia, Colombia



Betania, Antioquia, Colombia





Betania, Antioquia, Colombia





Betania, Antioquia, Colombia



31. + Pinillos, Bolívar, Colombia
~8° 59' N., 74° 28' W.

Provinces of Colombia



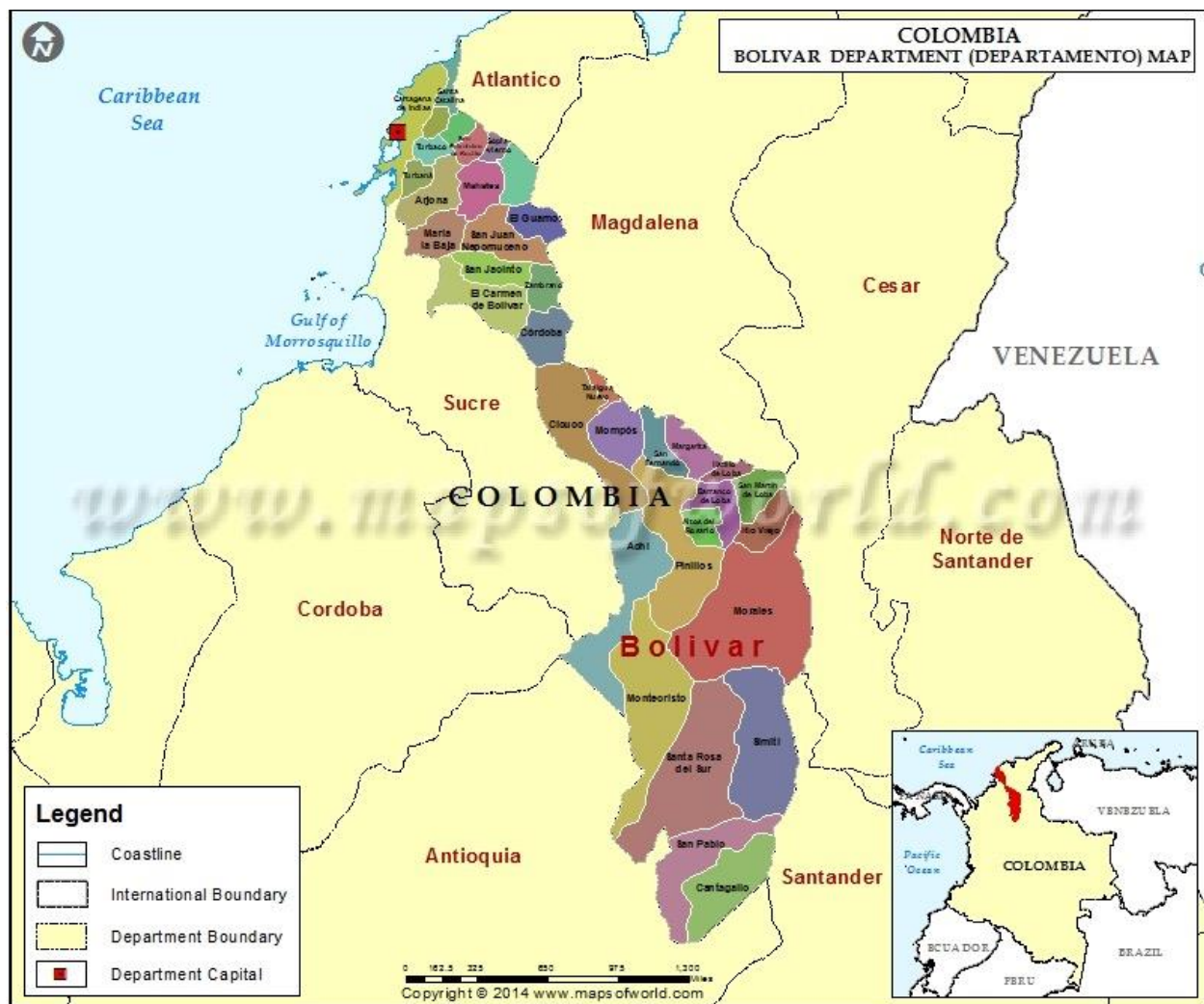
San Andrés, Providencia and Santa Catalina

Colombia





Province of Bolívar, Colombia





Pinillos, Bolívar, Colombia



Pinillos, Bolívar, Colombia





Pinillos, Bolívar, Colombia



GUATEMALA





32. = Languin, 30 mi North East of Coban, Alta Verapaz, Guatemala
~15° 43' N., 90° 9' W.

**Municipality of Languin,
Department of Alta Verapaz, Guatemala**



City of Coban, Guatemala



Coban from Google Earth



Languin, Guatemala





33. = Cayuga, State of Izabal, Guatemala

DUMB #1

~15° 32' N., 88° 42' W.

The entrance is near Silpini cave, reached by leaving Guatemala City going North East on Highway CA9 to Port Barrios on the Caribbean coast, before the Tenedores turn off is reached. A few yards North East on highway CA9 from Cayuga village, on the West side of the road.

(Ancient Mayan DUMB)



Department of Izabal, Guatemala





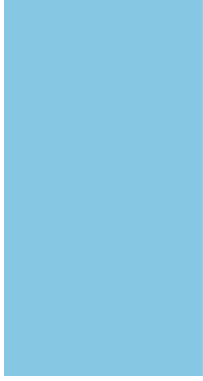
Cayuga, Izabal, Guatemala



34. = Cayuga, State of Izabal, Guatemala – DUMB #2. Antigravitics research.

15° 32' N., 88° 42' W.

Department of Izabal, Guatemala





Cayuga, Izabal, Guatemala



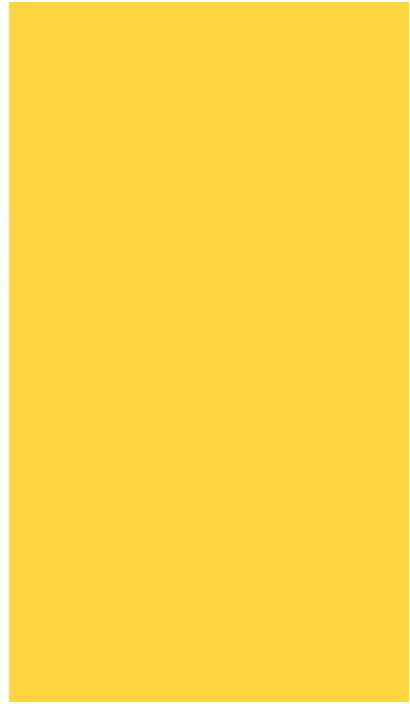
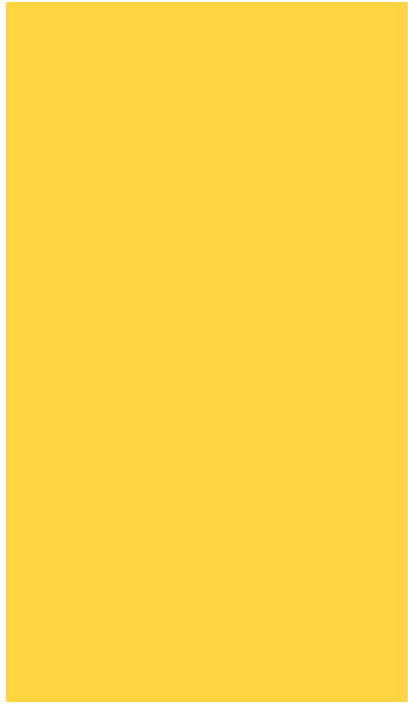
Cayuga, Izabal, Guatemala



35. = near Chajul, Quiche, Guatemala

~15° 29' N., 91° 2' W.

Department of Quiche, Guatemala





Chajul, Quiche, Guatemala

Municipalities of Quiché Department

1. San Andrés Sajcabajá
2. San Bartolomé Jocotenango
3. San Antonio Ilotenango
4. Santa Cruz del Quiché
5. Chinique



Chajul from Google Earth



Chajul, Quiche, Guatemala



VENEZUELA

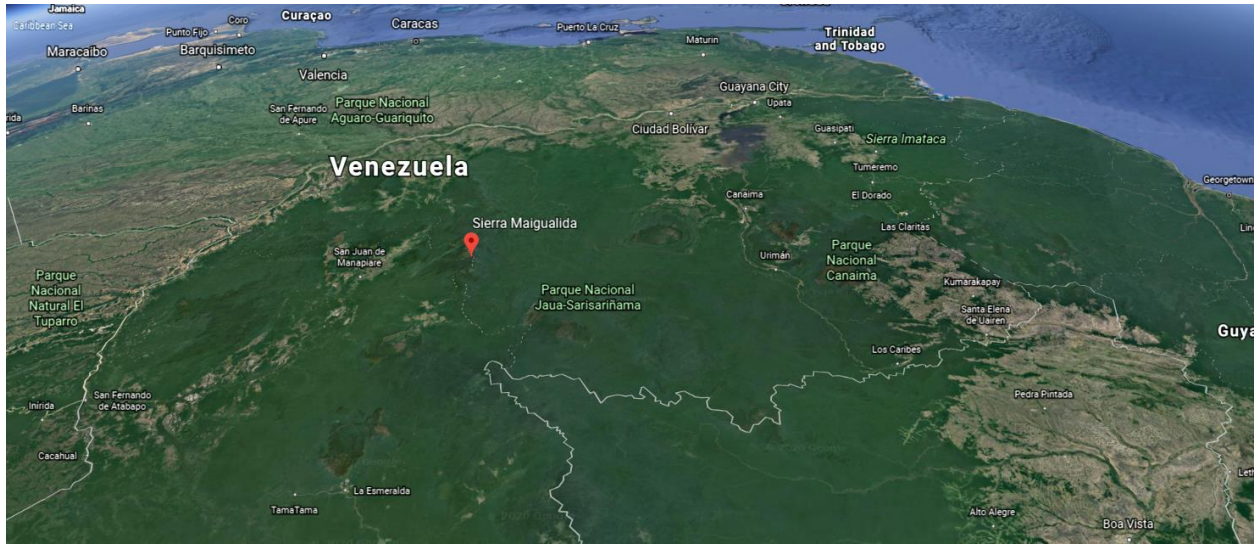




36. + Sierra de Maigualida, near Orinoco River, southern Venezuela
~5° 35' N., 65° 15' W.



Sierra de Maigualida, Venezuela



Looking west from the Orinoco River towards Sierra de Maigualida



Orinoco River Basin



Sierra de Maigualida, near the Orinoco River, Venezuela





Jari River
(tributary of Amazon) coming down from Guyana Highlands and lush rainforest in the Amazon region, Brazil (border between Para and Amapa)