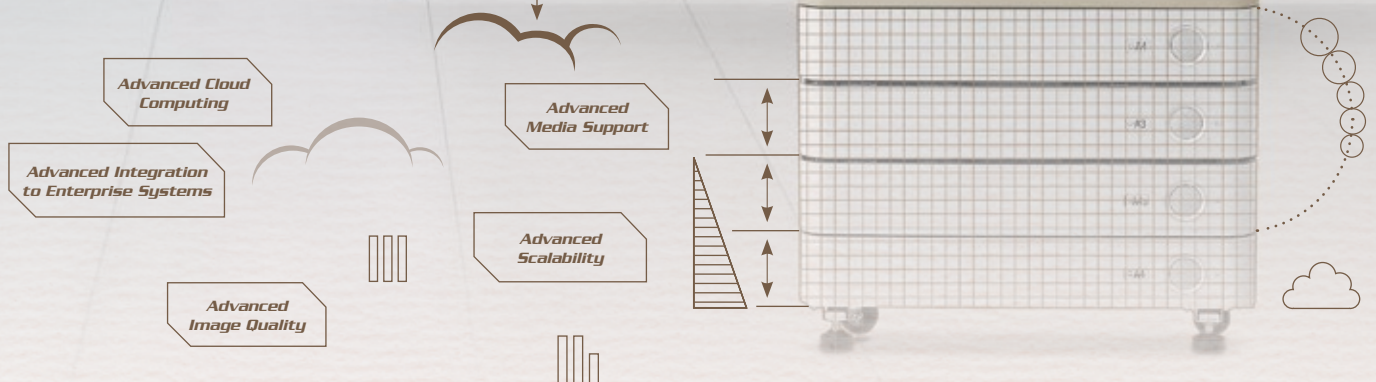




ADVANCED MADE SIMPLE FOR YOU



BOOST OFFICE PRODUCTIVITY. SIMPLIFY WORKFLOW.

WITH THE NEW **imageRUNNER ADVANCE 4200 SERIES.**

The **imageRUNNER ADVANCE 4200 series** is a productivity-centric multifunctional device you can count on. Whether your business needs high speed black and white printing, full color scanning, or rapid copy, this multifunctional device is up to task.

Designed and created to simplify your office workflow, the multifunctional device can be incorporated seamlessly into your infrastructure while bringing you enhanced collaborative functions and cloud technology. Teamed with Canon's Managed Document Services, your business can realize greater productivity, cost savings and efficiency for your entire office fleet.

The **imageRUNNER ADVANCE 4200 series** brings you a world of advancement:



Find out how we have made Advanced technologies work simpler for you.



ADVANCED USABILITY AND CONVENIENCE

to suit the way you work.



CONFIGURABLE QUICK MENU

The imageRUNNER ADVANCE 4200 series has been engineered with productivity, adaptability and flexibility in mind. The device comes with an easy to maneuver display menu that offers quick and simple access to essential system features. To suit your business requirements, key features can be configured to suit individual and workgroup preferences. This streamlines every individual's workflow and increases productivity by letting your business accomplish more in less time.



INNOVATIVE TONER REPLACEMENT SYSTEM

With the imageRUNNER ADVANCE 4200 series, you can reduce downtime with the built-in innovative toner system that allows for toner change even while printing.

INTUITIVE USER INTERFACE



Navigate with ease through the multitude of features on the imageRUNNER ADVANCE 4200 series, with its full color 8.4" high resolution TFT touchscreen, complemented with exceptional clarity and a wide range of viewing angles.

PLUG AND PRINT CAPABILITY

The imageRUNNER ADVANCE 4200 series comes with a built-in USB port that lets you scan to or print* files directly from your USB drive at the device. Alternatively, you can consider supplementing with an additional USB Device Port to scan to and print* files from a memory card.

* *Optional Direct Print Kit is required for print from USB and memory card.*



ADVANCED PRINT QUALITY

Uncompromised high quality printouts.



MULTIPLE PRINT OPTIONS

Canon's proprietary print technology UFR II utilizes load balancing technology to enhance performance and speed up print jobs. PCL 5e/6 and Adobe® PostScript® 3™ are also available as options.

The imageRUNNER ADVANCE 4200 series also supports Genuine Adobe® PostScript® 3™ printing capability, enabling you to deliver the desired output quality without worrying about font compatibility. Adobe® PostScript® capability enables smooth workflows for faster and better quality prints. Direct PDF printing and full support for Adobe fonts are also made possible.



Without Adobe PostScript 3

With Adobe PostScript 3

POWERFUL PERFORMANCE

Canon imageRUNNER ADVANCE devices are powered by the imageCHIP system architecture, which features a dual processor that has been designed to ensure greater efficiency and responsiveness. The image processor board works with the scanner, adjusts images and provides superior image processing. In tandem, the information processor controls the user interface and coordinates device networking and connectivity. Together, they give you better results with lesser wait.



HIGH RESOLUTION BRILLIANT PRINTOUTS



Combine Canon's E-Drum technology with the Quick Fixing (QF) Toner, and be astounded by the consistent and well-defined printouts produced at high speeds. The imageRUNNER ADVANCE 4200 series also utilizes high accuracy image segmentation technology, with 1200 x 1200 dpi black and white halftone screening capabilities, together with the full support of the Automatic Gradation Adjustment functionality for crisp text and razor sharp images.

ADVANCED PRODUCTIVITY

Designed to grow your business.

HIGH PAPER CAPACITY

The imageRUNNER ADVANCE 4200 series is designed to excel in handling your workgroup's high print volume with the optional Paper Deck Unit. Paper Deck-B2 adds an additional 2,700 A4 sheets that translates to lesser time spent on paper loading and longer uptime.

UNIVERSAL SEND

Universal Send technology provides your organization with an embedded solution that provides scan and route capabilities. The technology allows users to send scanned hardcopy originals electronically as files. Your business can realize greater efficiency as files can be sent to individual or multiple locations, be it email addresses, file servers, or shared networks all at once.

HIGH SPEED SCANNING

Using the optional document feeder, you can archive your documents and create up to 100 crystal-clear reproductions of black & white and color documents each time you press the button. What's more, at a speed of 51ipm in black & white or color, you no longer need to spend as much time waiting at the device.

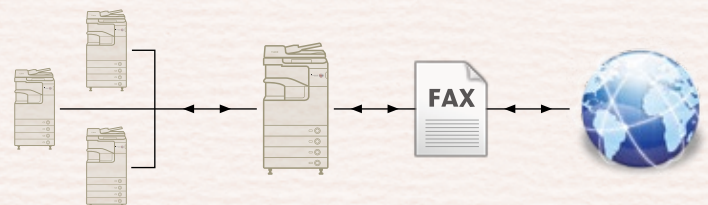
FLEXIBLE MODULAR DESIGN

Creating impressive business documents will never be a challenge again with imageRUNNER ADVANCE optional accessories. As work volume increases, the imageRUNNER ADVANCE 4200 devices can be customized to meet your requirements in a multitude of ways. If space is a constraint, internal stapling and collating units are also available.

RELIABLE AND COST SAVING FAX OPTIONS

The Super G3 fax option promises reliable, high-speed fax transmission. Coupled with the multi-line fax support, the imageRUNNER ADVANCE 4200 models support up to 4 fax lines to accommodate high volume fax usage. The optional Remote Fax Kit allows you to fax through other fax-capable imageRUNNER ADVANCE devices on the network for greater cost savings and convenience.

To further realize long-term cost savings for your business, the Internet Protocol (IP) Fax is an option to consider. It transmits digital fax data over an IP address in real-time. This allows organizations to reduce costs without compromising on speed, with the added advantage of automatic acknowledgement upon receipt.



Remote Fax Kit installed device

Fax-enabled device

ADVANCED

DOCUMENT WORKFLOW

Electronic document storage for efficient information dissemination across enterprises.

SCAN AND SEND

The Scan and Send function makes it easy to scan and disseminate information to multiple destinations including email, fax, and network folders. Supported formats include standard High Compression PDF, Adobe PDF, Reader extensions, Searchable PDF, Encrypted PDF, XPS and even the latest Office Open XML for PowerPoint.

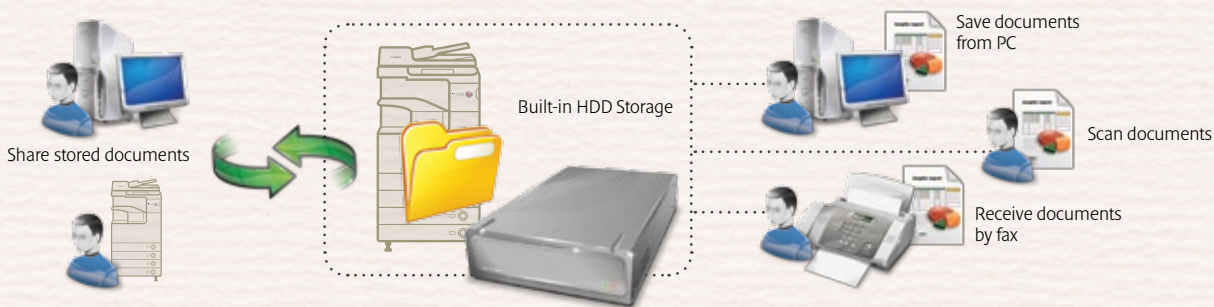
* Installation of optional accessories are required for some of the file formats.



STORE AND ACCESS WITH EASE

Designed to facilitate easy document sharing and collaboration without the need to maintain expensive servers, the imageRUNNER ADVANCE 4200 series comes equipped with an Advanced Box.

Using the Advanced Box, multiple users can share any file format on a shared folder and access files from PCs or other imageRUNNER ADVANCE systems on the same network. For more sensitive documents, personal folders can be created. The imageRUNNER ADVANCE 4200 device also comes with a built-in Mailbox feature that enables up to 100 individual or shared user accounts to access stored documents from the device or via Remote User Interface.



MOBILE PRINTING AND SCANNING

For users on the go, the versatile imageRUNNER ADVANCE 4200 provides simple mobile print functionality with features to help mobile device users print jobs from their devices. It supports a wide variety of formats including image, photo, PDF files and web pages.

Mobile users can also use the Canon Mobile Scanning for Business to scan and save data on their mobile devices, upload it to cloud storage services and send it as e-mail attachments to themselves.

* Canon Mobile Printing and Canon Mobile Scanning apps may be downloaded on Apple or Android devices.



ADVANCED SOLUTIONS

Achieve even more on the imageRUNNER ADVANCE system with MEAP, an intelligent platform that allows your business to adopt a wide selection of innovative document solutions to address your specific organizational needs.

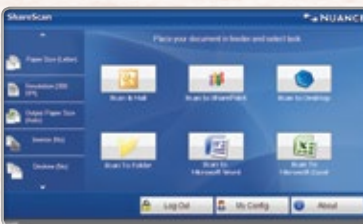
UNIVERSAL LOGIN MANAGER

A unique, server-less solution created for imageRUNNER ADVANCE devices, the Universal Login Manager can be implemented on imageRUNNER ADVANCE devices to offer convenient login and track functionality. A breeze to implement and yet easy on the budget, the Universal Login Manager can be further upgraded to uniFLOW, which offers more advanced options that can be customized to meet your organizational needs.



iW ACCOUNTING MANAGER FOR MEAP

Track your organization's print consumption through detailed and vital information of how your devices are utilized, all without the need for additional manpower or equipment.



eCOPY® SHARESCAN SUITE

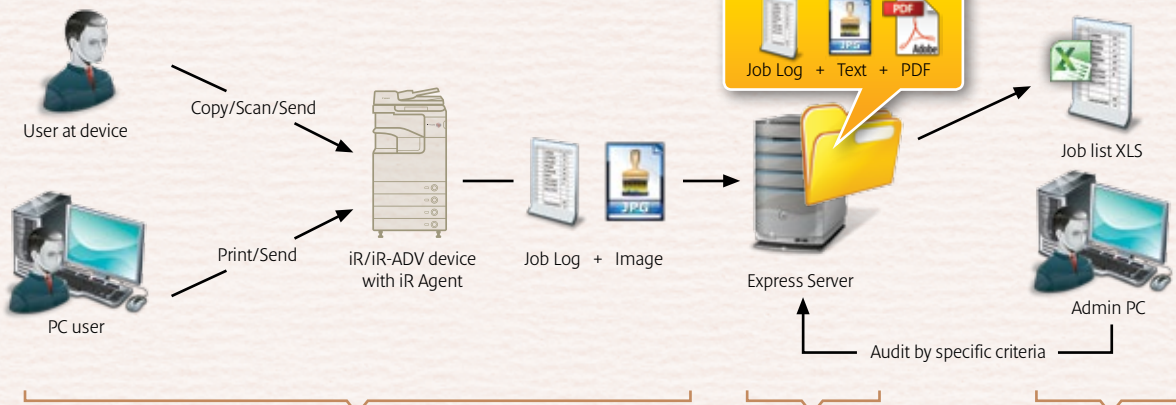
eCopy® ShareScan Suite transforms paper-based data safely and directly into electronic workflows. You can scan, extract, classify, index and convert paper information into digital information right from the device to the electronic channels of your business.

eCOPY® PDF PRO OFFICE

eCopy® PDF Pro Office, the latest enterprise-ready PDF solution from Nuance, is the smart PDF desktop software companion to Canon multifunctional devices. This powerful, easy-to-use PDF solution that lets you create, convert, and collaborate for increased productivity and cost savings.

iW SECURE AUDIT EXPRESS

This software enables document distribution oversight and safeguards against potential information espionage or abuse by logging text and image data whenever the device is utilized.



01 On-device imageRUNNER Agent captures log and image data

02 Info is sent to Express server for OCR; image and text exported

03 Express Audit Tools allows compilation and extraction of key info

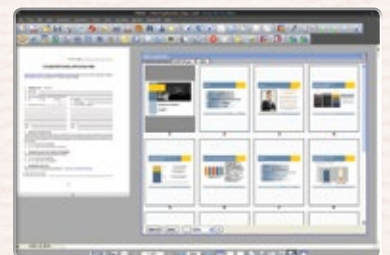
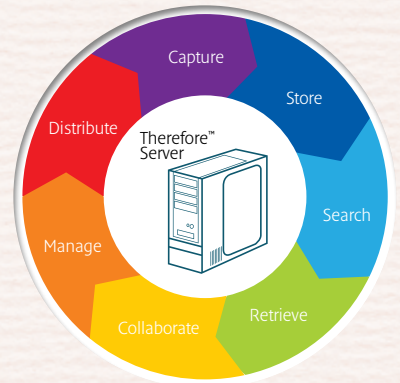


uniFLOW

uniFLOW is designed to save you time and money by providing effective controls over your entire multi-functional device fleet. The uniFLOW solution can be customized from several different components that best complement your business requirements.

THEREFORE™

Therefore™ is a holistic document management solution that offers an easy-to-implement storage and retrieval system to give every staff instant, secure access to all information.



ADVANCED MANAGEMENT AND SECURITY

Maintain control and optimize your company's output.

MANAGED DOCUMENT SERVICES

The bigger the enterprise, the greater the likelihood for hidden costs and inefficiencies. Canon's Managed Document Services consultancy takes a methodical approach to understand your business's unique challenges while helping to advise, optimize, and save.

CENTRALIZED REMOTE CONTROL

The Remote User Interface lets IT managers and system administrators control, track and manage each output device easily at their workstation. With centralized remote control of the entire print fleet, time required for device status checks is greatly minimized. This allows for better focus on essential business activities.

ACCESS MANAGEMENT SYSTEM KIT

By utilizing the Access Management System Kit, you can reduce operating costs while preventing unauthorized distribution of highly confidential documents for your business. The Access Management System Kit can be customized to restrict access based on the requirements of each individual's work role.

eMAINTENANCE®

To reduce administrative burdens, eMaintenance® is the ideal solution to manage your Canon device fleet. You can be sure that your devices will be proactively maintained, ensuring lesser downtime and heightened organizational productivity.

ADVANCED ENVIRONMENTAL RESPONSIBILITY

Designed and created with the environment in mind.



EFFICIENT ENERGY UTILIZATION

The imageRUNNER ADVANCE 4200 series features a self-lit Energy Saver hard key instead of the conventional Power hard key. This minimizes power consumption when the device goes to sleep mode.

THE COMMITMENT TO CONSERVE

Every imageRUNNER ADVANCE is constructed from recycled plastic from a past product. In addition, Canon adheres to the most stringent standards, restricting the use of 24 hazardous substances (where EU RoHS directives restrict only 6).

SMART ENERGY SAVING MODE

Administrators can program the imageRUNNER ADVANCE devices to shut down automatically at scheduled timings. This allows for greater energy conservation especially during long periods of non-operation.

CHANGING BEHAVIOR, SAVING THE ENVIRONMENT

By encouraging digital workflows, unnecessary paper wastage incurred from mistakes is greatly reduced. Administrators can also encourage use of duplex settings and control color usage easily.

ACHIEVE LOWER CO₂ EMISSION

By optimizing the document life cycle through smarter solutions and intuitive workflows, the imageRUNNER ADVANCE has significantly lower levels of CO₂ emission, compared to previous models.

QUICKER, YET GREENER

Canon's innovative Quick Fixing (QF) toner is capable of low-heat, on-demand fusing. This has a fourfold benefit: faster print speeds, better quality prints, lower power consumption, and a greener environment.

SPECIFICATIONS imageRUNNER ADVANCE 4251/4245/4235/4225 Series

Type	Monochrome Laser Multifunctional (Reader / Printer Separated)	
Maximum Original Size	A3	
Paper Sizes	Cassette 1	B4, A4, A4R, B5, B5R, A5R
	Cassette 2	A3, B4, A4, A4R, B5, B5R, A5R, and Custom size (139.7mm x 182mm to 297mm x 431.8mm), Envelopes (COM10 No.10, Monarch, DL, xISO-CS)**
	Multi Purpose Tray	A3, B4, A4, A4R, B5, B5R, A5R, Custom size (99mm x 148mm to 297mm x 431.8mm), Envelopes
Resolution	Scan	600dpi x 600dpi
	Copy	1200 x 600dpi (Interpolated)
	Print	1200dpi x 1200dpi
Copy / Print Speed	A4	4251: 51ppm / 4245: 45ppm / 4235: 35ppm / 4225: 25ppm
	A3	4251: 25ppm / 4245: 22ppm / 4235: 22ppm / 4225: 15ppm
Magnification	Copy Ratio	25-400%
First Copy Time	4251: 3.7 seconds or less	
	4245 / 4235: 3.8 seconds or less	
	4225: 5.2 seconds or less	
Warm-Up Time	From Power On	30 seconds or less
	From Sleep Mode	10 seconds or less
Multiple Copies	1 to 999 copies	
Paper Weight	Cassette	60 to 128gsm
	Multi Purpose Tray	52 to 220gsm
Paper Capacity	Cassette 1, 2	550 sheets x 2 cassettes (80gsm)
	Cassette 3, 4 (Optional)	550 sheets x 2 cassettes (80gsm)
	Multi Purpose Tray	80 sheets (80gsm)
	Paper Deck	2,700 sheets (80gsm)
CPU	1.8GHz	
Memory	Standard: 1.256GB RAM / Maximum: 1.768GB RAM	
Hard Disk	Standard 160GB / Optional 1TB	
Interface	Network	Ethernet 10Base-T / 100Base-TX / 1000Base-T (RJ-45)
	Others	USB 2.0 x 2 (Host), USB 2.0 (Device), USB 2.0 x 2 (w/Optional Device Port), SD Card / SDHC Card / CompactFlash / Memory Stick / Microdrive (w/Optional Multimedia Reader / Writer)
Power Supply	220-240V AC, 50/60Hz	
Max Power Consumption	1.5kW or less	
Toner Yield (A4, 6% coverage)	4251 / 4245:	34,200
	4235 / 4225:	30,200
Drum Yield	4251:	176,000 / 4245: 172,000
	4235:	139,000 / 4225: 138,000
Dimensions (W x D x H)	565mm x 708mm x 902mm (w/ADF)	
Weight	78.0kg (w/ADF)	
Installation Space (W x D)	876mm x 708mm	
OS Compatibility	Windows 8.1/8/7/Vista/XP/Windows Server 2003/Server 2008/Server 2008 R2/Server 2012/	

Print Specifications

PDL	UFR II (Standard), PCL5e/6 (Optional), Adobe PostScript 3 (Optional)	
Resolution	1200dpi x 1200dpi	
Supported OS	PCL	Windows 8.1/8/7/Vista/XP/Windows Server 2003/Server 2008/Server 2012
	Adobe PostScript 3	Windows 8.1/8/7/Vista/XP/Windows Server 2003/Server 2008/Server 2012, Mac OS X 10.5 or later
	UFR II	Windows 8.1/8/7/Vista/XP/Windows Server 2003/Server 2008/Server 2012, Mac OS X 10.5 or later
Mac-PPD	Mac OS 9 (9.1 or later), Mac OS X (10.3.9 or later)	
Interface	Network	Ethernet 10Base-T / 100Base-TX / 1000Base-T (RJ-45)
	Others	USB 2.0 x 2 (Host), USB 2.0 (Device), USB 2.0 x 2 (w/Optional Device Port), SD Card / SDHC Card / CompactFlash / Memory Stick / Microdrive (w/Optional Multimedia Reader / Writer)
Network Protocol	TCP/IP (LPD / Port9100 / WSD / IPP / IPPS / SMB / FTP), IPv6, IPX / SPX (NDS, Bindery), AppleTalk	
Pull Scan	Network TWAIN Driver (75 to 600dpi 24bit color / 8bit grayscale / 2bit Black & White)	

Send Specifications

Scan Speed (A4, 300dpi)	Black & White / Color: 51ipm	
Scan Resolution	100 x 100dpi, 150 x 150dpi, 200 x 100dpi, 200 x 200dpi, 200 x 400dpi*, 300 x 300dpi, 400 x 400dpi*, 600 x 600dpi*	
Destinations	Email/Internet FAX (SMTP), PC (SMB, FTP), iWDM, WebDAV	
Address Book	LDAP, Local (Max 1800)	
File Format	TIFF, JPEG, PDF, XPS, High Compression PDF/XPS, PDF/A-1b, Optimize PDF for Web	



To arrange for a demonstration, simply contact any of our offices below.

SOUTH & SOUTHEAST ASIA REGIONAL HEADQUARTERS

Canon Singapore Pte. Ltd.
1 HarbourFront Avenue #04-01, Keppel Bay Tower, Singapore 098632
Tel: +65-6799 8888 | Fax: +65-6799 8882 | www.canon-asia.com | www.canon.com.sg

CANON SALES SUBSIDIARIES & BUSINESS PARTNERS

Afghanistan:

Megaplus Afghanistan Limited
House No. 233, Street No. 4, Charagh Ali,
Qilla-e-Fatehullah, Kabul, Afghanistan
Tel: 93-700 228 832 / 93-700 979 511
Fax: 93-202 201 259
Email: info@megaplus.com.af

Hong Kong:

Canon Hongkong Co. Ltd.
19F, The Metropolis Building,
10 Metropolis Drive
Hunghom, Hong Kong
Tel: 852-3191-2388
Fax: 852-2369-3800
www.canon.com.hk

Maldives:

Simdi Company Pvt Ltd.
G.Manaam Building,
2/1 Neeloofaru Magu,
Kharu 20-129, Maldives
Tel: 960-333 4421
Fax: 960-333 4424

Myanmar:

Myanmar Golden Rock International Co., Ltd
No. 79-D, Bo Chein Street, Pyay Road,
6 1/2 Mile, Hlaing Township,
Yangon, Myanmar
Tel: 95-1-654810 to 19 (10 Lines),
95-1-654844 to 48 (5 Lines)
Fax: 95-1-654820
Email: sales@mgr.com.mm

Nepal:

International Electronics Concern (P) Ltd
Kha 14, 1st Floor
Haratibhawan Putalisadak
Ramshah Path, Kathmandu, Nepal
P.O. Box 12588
Tel: 977-1-442 1991
Fax: 977-1-442 1909

Pakistan:

Shirazi Trading Company (Pvt) Ltd
8th Floor, Adamjee House
I.I. Chundrigar Road
Kharachi 74000 Pakistan
Tel: 92-21-3241 (7659), (7327) or (7746)
Fax: 92-21-(3241 7747), (3242 0417) or
(3242 0418)
www.shirazitradng.com.pk

Philippines:

Canon Marketing (Philippines), Inc.
Ground Floor Commerce and Industry Plaza,
Campus Ave. Cor. Park Ave., McKinley Hill
Fort Bonifacio, Taguig City
Tel: 632-884-9000
Fax: 632-556-1456
www.canon.com.ph

Sri Lanka:

Metropolitan Office (Pvt) Ltd
12, Magazine Road Colombo 08
Sri Lanka
Tel: 94-11-470 0200
Fax: 94-11-470 0267
www.metropolitan.lk

Taiwan:

Canon Marketing (Taiwan) Co. Ltd
19F, No. 100, Sec.2 Roosevelt Road,
Taipei, Taiwan, R.O.C.
Tel: +886 2-6632-8888
Fax: +886-2-6632-6700
www.canon.com.tw

Thailand:

Canon Marketing (Thailand) Co. Ltd
No.98 Sathorn Square Office Tower,
21st - 24th floor, North Sathorn Road,
Silom, Bangkok, Bangkok 10500
Tel: 66-2-344 9999
Fax: 66-2-344 9960
www.canon.co.th

Vietnam:

Canon Marketing (Vietnam) Co. Ltd
Level 10, President Place, 93 Nguyen Du,
Dist:1, Ho Chi Minh City, Vietnam
Tel: 84-8-3820 0466
Fax: 84-8-3820 0477
www.canon.com.vn

Cambodia:

Royal Cambodia Co., Ltd
#437 Preah Monivong Blvd
Phnom Penh
Kingdom of Cambodia
Tel: 855-23-428955
Fax: 855-23-722961

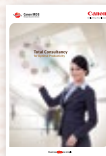
Malaysia:

Canon Marketing (Malaysia) Sdn Bhd
Block D, Peremba Square
Saujana Resort Section U2,
40150 Shah Alam
Selangor Darul Ehsan, Malaysia
Tel: 60-3-7844 6200 / 7845 0055
Fax: 60-3-7844 6196 / 6198
www.canon.com.my

This document is for information purpose only and the contents are subject to change without notice. Product options, name and availability may vary by regions. Nothing in this document should be construed as a warranty. We expressly disclaim any liability or contractual obligations with respect to this document.

Canon, imageRUNNER, imageRUNNER ADVANCE, imageCHIP, RAPID Fusing System, MEAP, eMaintenance, iW, Business can be simple and get Smart get genuine are trademarks of Canon Inc. and/or its affiliates. "MEAP" is a trademark of CANON Inc., referring to an "application platform" for Canon multifunction and single function printers. Other names may be the trademarks of their respective owners.

uniFLOW, eCopy and Therefore are independent party software distributed by Canon Singapore Pte Ltd.



Managed Document Services



Cloud Computing

To integrate more capabilities into your imageRUNNER ADVANCE device, simply speak with your friendly Canon representative.

Optional Accessories

Universal Send Advanced Feature Set-D1

File Format Outline PDF (Trace & Smooth), Searchable PDF/XPS, Reader Extensions PDF, Open Office XML for PowerPoint

Universal Send Security Feature Set-D1

File Format Encrypted PDF, Device Signature PDF/XPS

Duplex Automatic Document Feeder-AG1

Type	Automatic Document Feeder	
Size of Originals	A3, B4, A4, A4R, A5, A5R, B5, B5R, B6	
Paper Weight	Black & White Original	1-sided scanning: 42 to 128gsm / 2-sided scanning: 50 to 128gsm
	Color Original	64 to 128gsm
Max Number of Originals	100 sheets (80gsm)	
Scanning Speed (Max)	Copying (A4 in Black & White at 600dpi):	
	1-sided scanning: 4251: 51ppm / 4245: 45ppm / 4235: 35ppm / 4225: 25ppm	
	2-sided scanning: 4251 / 4245 / 4235: 17ppm / 4225: 15ppm	
	Scanning (A4 in Black & White at 600dpi or A4 in Black & White/Full Color at 300dpi):	
1-sided scanning: 51ipm		2-sided scanning: 17ipm
Dimensions (W x D x H)	565mm x 540mm x 140mm	
Weight	Approx. 7.9kg	

Cassette Feeding Unit-AF1

Paper Sizes	A3, B4, A4, A4R, B5, B5R, A5R, Custom size (139.7mm x 182mm to 297mm x 431.8mm)	
Paper Capacity	550 sheets x 2 cassettes (80gsm)	
Power Source	From main unit	
Dimensions (W x D x H)	565mm x 650mm X 248mm	
Weight	Approx. 27.5kg	

Staple Finisher/Booklet Finisher-G1

Number of Trays	2 Trays	
Paper Size	A3, B4, A4, A4R, B5, B5R, A5R, Envelopes	
Paper Weight	52 to 220gsm	
Tray Capacity	No Collating Mode	Upper Tray: A4, A5R 1,300 sheets / A3, A4R 650 sheets Lower Tray: A4, A5R 1,700 sheets / A3, A4R 650 sheets
	Collate, Group Mode	Upper Tray: A4 1,300 sheets / A3, A4R 650 sheets Lower Tray: A4 1,700 sheets / A3, A4R 650 sheets
	Staple Mode	Upper Tray: A4 1,300 sheets / 30 sets (or 188mm in height) / A3, A4R 650 sheets / 30 sets (or 96mm in height) Lower Tray: A4 1,700 sheets / 30 sets (or 243mm in height) / A3, A4R 650 sheets / 30 sets (or 96mm in height)
Staple Capacity	A4: 50 sheets (80gsm) / A3, A4R: 30 sheets (80gsm)	
Saddle Stitch	A3 and A4R: 16 sheets (52 to 81 g/m ²) / 10 sheets (82 to 105 g/m ²)	
Paper Size -G1 only	Paper Size	A3, A4R
	Staple Capacity	16 sheets (80gsm)
Staple Position	Staple Finisher	Corner, Double
	Booklet Finisher	Corner, Double, Saddle Stitch
Dimensions (W x D x H)	Staple Finisher-G1:	648mm x 646mm x 1,097mm (when the auxiliary tray is extended)
	Booklet Finisher-G1:	766mm x 646mm x 1,097mm (when the auxiliary tray is extended)
Weight	Staple Finisher: Approx 46.0kg / Booklet Finisher: 75.0kg	

Other Optional Accessories

Platen Cover Type R, Paper Deck Unit-B2 A4, Envelope Feeder Attachment-D1, Inner 2Way Tray-H1, Inner Finisher-D1, Inner 2 Hole Puncher-A1, Inner Finisher Additional Tray-A1, Buffer Pass Unit-H1, External 2 Hole Puncher-B2, Utility Tray-A2, Copy Card Reader-F1, Copy Card Reader Attachment-B3, Copy Control Interface Kit-A1, EM Controller-C1, FL Cassette-AM1, FL Cassette-AQ1, Stamp Unit-B1, Serial Interface Kit-K1, Stamp Ink Cartridge-C1, Staple Cartridge-J1, Staple Cartridge-D2, Staple Cartridge-D3, Cassette Heater Unit-37, Paper Deck Heater Unit-C1, Reader Heater-H1 200V, Heater Kit-K1 200V, Drum Heater-C1, PCL Printer Kit-A1, PCL Font Set-A1 EFIGS, Barcode Printing Kit-D1, P5 Printer Kit-A1, Direct Print Kit (For PDF)-H1, Direct Print Kit (For XPS)-H1, Super G3 Fax Board-AP1, Super G3 2nd Line Fax Board-AP1, Super G3 3rd/4th Line Fax Board-AL1, Remote Fax Kit-A1, IP Fax-A1, Expansion Bus-F2, USB Device Port-E3, Multimedia Reader/Writer-A2, 512MB RAM Type A, Web Access Software-H1, Universal Send Digital User Signature Kit-C1, Encrypted Printing Software-D1, Secure Watermark-B1, HDD Encryption and Mirroring Kit-C4 EX, HDD Mirroring Kit-H1, 2.5INCH/160GB HDD-G1, 2.5INCH/1TB HDD-K1, Removable HDD Kit-A1, Access Management System Kit-B1, Document Scan Lock Kit-B1, IR-ADV Security Kit-K1, Remote Operators Software Kit-B1, ADF Access Handle-A1, Voice Operation Kit-C2, Voice Guidance-F2.

*1 Installation of Envelope Feeder Attachment is required.

*2 Additional memory upgrade is required.