

# BRIDGE TO A BETTER TOMORROW

BUILDING CAMPAIGN

No one goes hungry in  
Walworth County.



**NEIGHBORS  
HELPING  
NEIGHBORS**  
WALWORTH COUNTY, WI

[www.TheBridgeWalco.org](http://www.TheBridgeWalco.org)

# **WE NEED TO EXPAND.**

## **WE NEED YOUR HELP.**

Walworth County is rich in natural beauty, strong neighborhoods, and people who care about one another. Yet nearly 14,000 households struggle with food insecurity and other urgent needs.

Since 2009, The Bridge Food & Diaper Bank has connected neighbors who want to help with neighbors who need support. Today, we serve more than 2,500 Walworth County households with food, diapers, and basic essentials.

But the need is greater, and our current space limits how many families we can serve. We've reached a point where we simply cannot expand our services without expanding our facility.

Read on to learn how our community can come together to ensure every household in Walworth County has what they need to thrive.



**READY TO HELP NOW? SEE INSERT.**

# THE NEED

**The face of hunger in Walworth County is not what you may think.** Often it is the person you sit next to in church or the child you see playing on the playground. It is the older adult too proud to ask for help. At The Bridge, we welcome those that need our help in a cheerful atmosphere. **Yet we struggle with the limitations of our current building.** Our small facility was built as a medical clinic and limits storage, sorting, distributing, guest access, and volunteer coordination for our food and diaper bank. Our lack of refrigeration limits perishable food distribution impacting us and the other Walworth County pantries we support.

Food insecurity risk affects 33% of Walworth County residents.

# 33%

**More Walworth County residents need our help.** Many are one crisis away from a downward spiral, forcing difficult decisions, with possibly no food to eat. These spirals also cause fear of losing their home or apartment.

**In order to serve more residents, we need a larger, more efficient space.**

*In our current facility, we must touch food 6+ times before it gets into the hands of our guests.*



# THE NEED

**33% of Walworth County residents are at risk** of food insecurity. Our goal is to develop a plan that focuses on helping our neighbors who are living in poverty AND on strengthening the ALICE households in Walworth County.

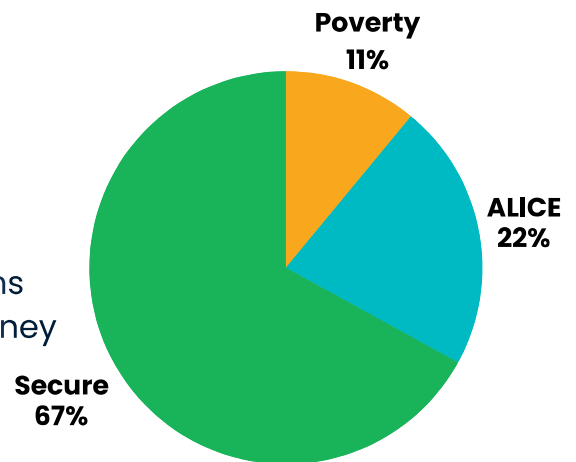
In Walworth County, **11% of our neighbors** (4,400 households) are living **below the Federal Poverty Level (FPL)**.

Currently, our guest income eligibility is based on government guidelines of 200% above the FPL.

In Walworth County, **22% of the households** (9,461) **are considered ALICE households**.

## ALICE is an acronym for:

- Asset Limited**, they don't have many possessions
- Income Constrained**, they don't have much money
- Employed**, they are working 2 or 3 jobs



The income of an ALICE household is above the FPL, so they don't qualify for public assistance, yet they don't earn enough money to cover basic expenses like rent, food, and childcare. ALICE households are not living "paycheck to paycheck", they are really living day to day, unable to afford an unexpected expense like a car breaking down, an accident, or a health issue.

In the new building, we'll be able to expand our guidelines and serve the ALICE population addressing the crisis before it spirals.

**\*Visit [unitedforalice.org](http://unitedforalice.org) to learn more about ALICE**

# OUR HISTORY

In 2009, our journey began with local Boy Scouts pulling wagons of food in Lake Geneva, harnessing the power of the community to help those most in need. Since that time, The Bridge has made significant improvements.

- Increased capacity in 2014 with the relocation to our current facility in Elkhorn.
- Established partnerships with other food pantries in Walworth County and became a food bank, now **supporting 19 pantries**.
- Became the county provider of Hunger Task Force Stockboxes for older adults.
- Developed CARE bags of hygiene products and cleaning supplies for older adults.
- Became the **county provider of milk** through Feeding America.
- Added the diaper bank, becoming **the only National Diaper Bank Network member in Walworth County**.
- Began focusing on period poverty in Walworth County and became members of the **Alliance for Period Supplies**.
- Changed our name to The Bridge Food & Diaper Bank in 2025, reflecting the mission to build life security for Walworth County residents with funding from private donations and grants.

**We're moving five hundred thousand pounds, translating to millions of dollars of food, every year to our Walworth County neighbors in need and our pantry partners.**



# OUR RESOURCES

## \$1 = \$7

**Because of our purchasing power, every \$1 donation becomes \$7 of food.**

Having a loading dock means we can accommodate semi-trucks and large donations. Some of these donations come to us last minute, and being able to receive these donations means more food for our shelves, **and the shelves of other pantries throughout Walworth County.** Last year, we shared **50,652 pounds** of food with our pantry partners.

The Bridge Food & Diaper Bank works with local, national, and government resources to secure free food and purchase food at a reduced cost. Food resources are critical because we are not county-funded.



# OUR VOLUNTEERS

The quality of the Walworth County community is defined by the opportunities to volunteer, to give back, and to help our neighbors in need. The Bridge Food & Diaper Bank operates with a small staff of 2 full-time employees, 2 part-time employees, and the dedication of almost **200 registered volunteers who logged 10,939 hours in 2025**. According to *Independent Sector*, the value of a volunteer hour for 2025 is \$34.79, **translating to \$380,568** for The Bridge.

Retired and fairly new to the area I was looking for an organization that would be as fulfilling as an experience I had with a group I volunteered with in Illinois over a 15-year span. I tried out a couple of local non profits but did not find what I was looking for. Then my wife and I toured The Bridge. Very organized, professional, friendly. Could this be it I wondered? It is.

I work back room distribution, fresh market restock, and back lot loading of guests' cars. It's a great group, very supportive of one another, extremely hard working, never hear a cross word. **Guests are very thankful for what we can provide.** Tears sometimes. And when you load up a birthday kit for a child in the car and wish them happy birthday, they light up, and it makes your day. **Everybody gets fed is the mantra.** It's hard work, no doubt. And the couch is always calling by the end of a shift. But it's very satisfying to be able to serve the community with such a great organization. Looking forward to serving The Bridge for many years to come. *-Mike R., Bridge Volunteer*



# OUR DONORS

At The Bridge Food & Diaper Bank, we are grateful every day for a community of supporters who believe in our mission. Walworth County has a strong network of neighbors helping neighbors.

We are committed to being good stewards of every donation and the faith entrusted to us. We do not receive government funding. We can't be successful in the fight against food insecurity in Walworth County without monetary support from private donations and grants. These partnerships are critical, and **we value each and every donation.**



# THE TIME TO EXPAND IS NOW

At The Bridge Food & Diaper Bank, we recognize the need, and we know that we can do more. We know that we can serve more Walworth County residents who are struggling to make ends meet. We know that we can offer greater support to our partner pantries. **The solution requires a new facility.**

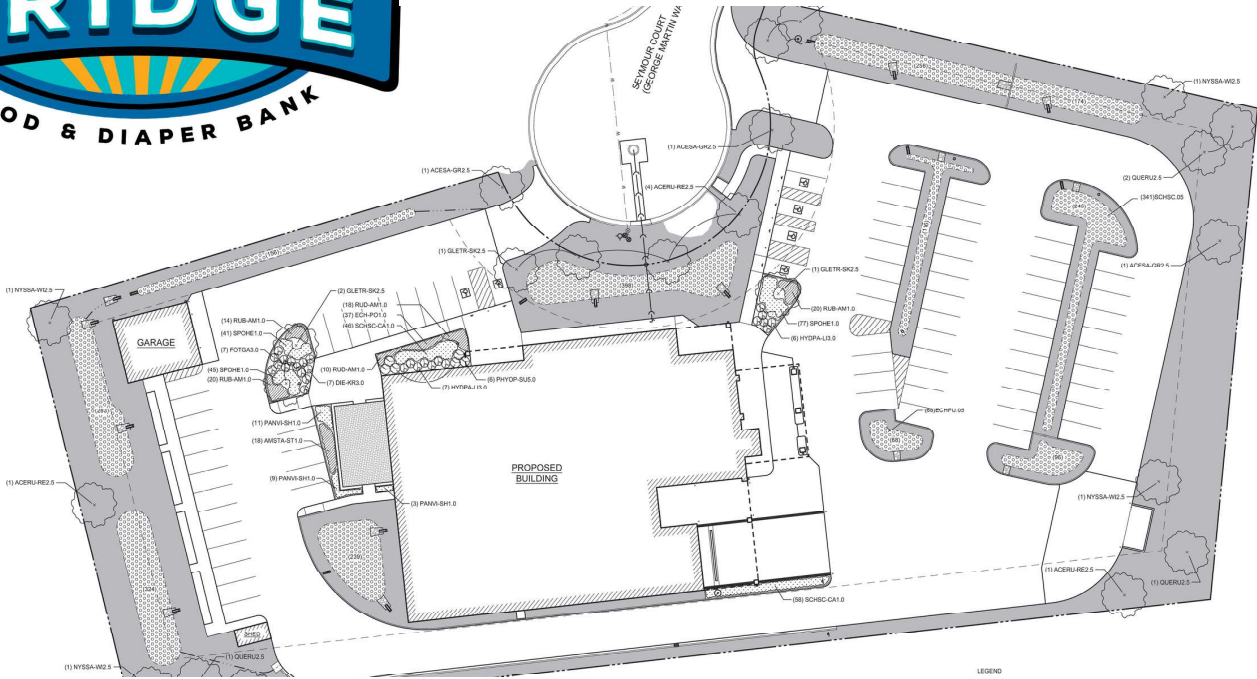
Through strategic planning, we have developed the vision to ensure that no one in Walworth County will go hungry now, and for years to come. **We believe that when our community is fed, it is at its strongest, and everyone wins.**

**BELIEVE  
THERE IS  
GOOD IN  
THE WORLD**



Families often arrive anxious and exhausted. We believe they should be greeted with dignity and care, not long lines or cramped spaces. The Bridge is a haven for hope, but we've outgrown our walls.

**Expansion is necessary and urgent.**

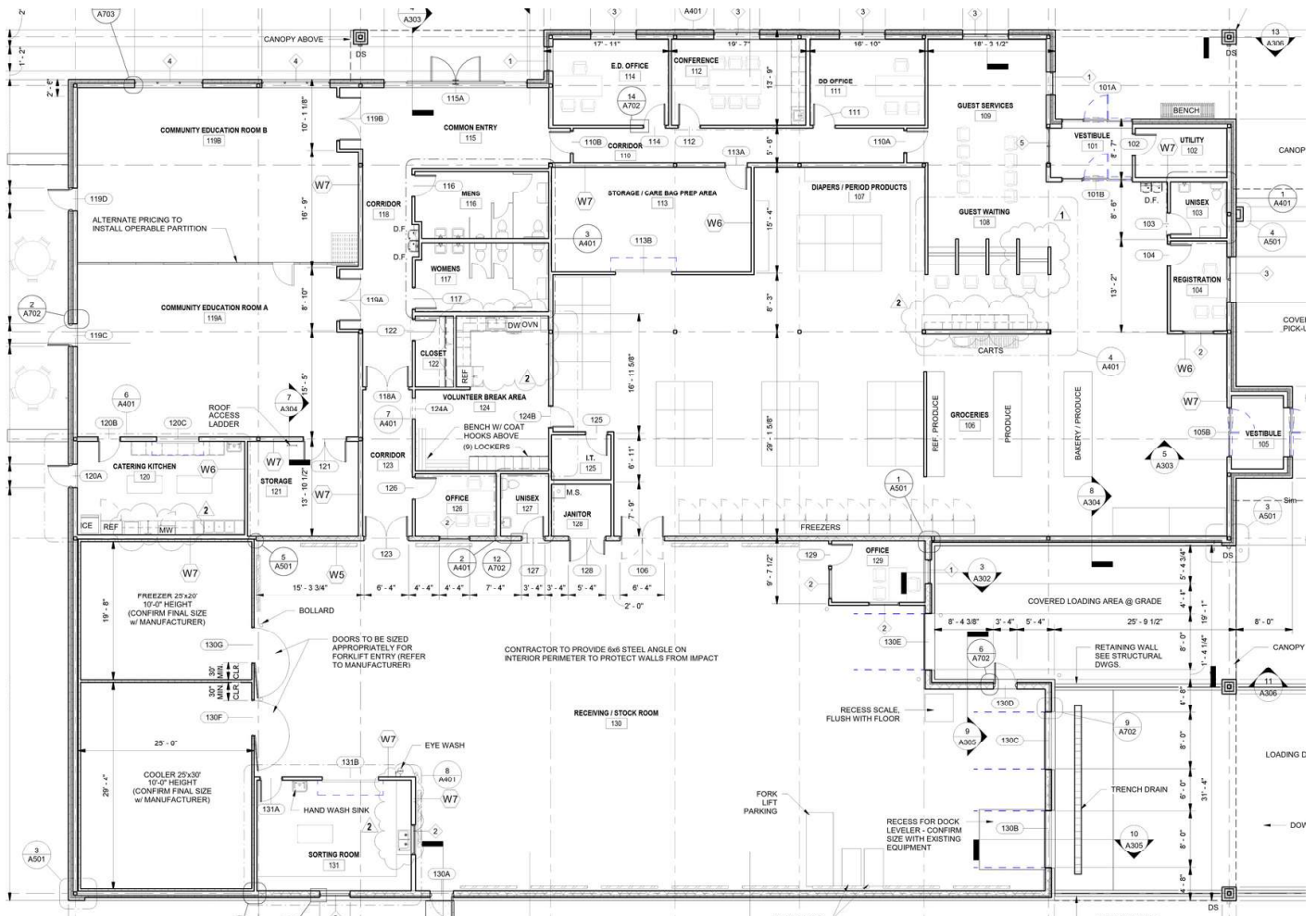


Located steps from our current facility, the new building will be easy for current and new guests to find, while remaining in close proximity to Hwy. 43 for deliveries and large, unexpected donations.

**Going from 10,000 sq. ft. on two levels**



**Receive more food. Serve more people.  
Achieve food security and improved nutrition in Walworth County.**



**Separate receiving and distribution areas will allow us to be open more days and more hours, accommodating more Walworth County residents who need our help.**

## to 18,000 sq. ft. on one level will provide:

- A welcoming guest reception with privacy partitions
- A dedicated parking lot with individual parking spaces
- An indoor waiting area
- Expanded food storage (dry, refrigerated, and frozen)
- A dedicated diaper and period supply area
- Dignified self-shopping experience
- Options for guests with allergies, diabetes, and other health concerns
- More fresh fruits and vegetables
- A prep room to process bulk donations
- Automatic doors for disabled guests
- Loading docks for efficient deliveries and partner collaboration
- Community space to host guest workshops, events, and educational programs
- The ability to expand our older adult focused programs and services



America is the richest country in the world. And yet tonight, thousands of our neighbors will go to bed hungry. It may be your child's schoolmate who is undernourished and has difficulty learning on an empty stomach. Or it could be a co-worker, a working mother whose low-wage job doesn't make ends meet. Perhaps it's an elderly neighbor who has to make a decision whether to delay filling a prescription or buying groceries. The faces of hunger are as broad as the faces of America. -David Nasby, General Mills

**205 E. Commerce Ct. • PO Box 1016**  
**Elkhorn, WI 53121-1016**  
**262-723-4488**  
**[www.TheBridgeWalco.org](http://www.TheBridgeWalco.org)**



**In Walworth County,  
No One Goes Hungry.**