

CAST-IN ANCHOR FOR LIFTING

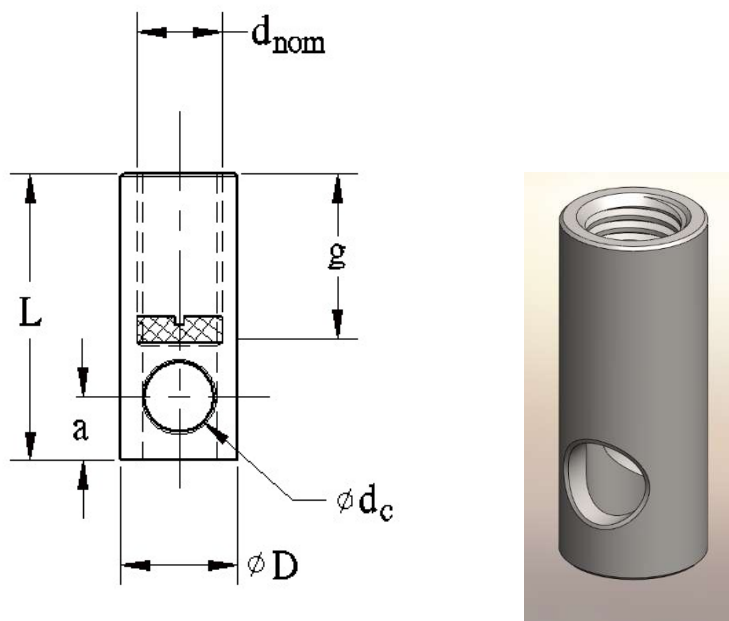


Table 1. Product Specification

Unit: mm

Anchor Size	ΦD (mm)	L (mm)	Thread d_{nom} (mm)	g (mm)	a (mm)	Φd_c (mm)	S.W.L (KN)	Packing Qty
36xx- d_{nom} -L								
36xx-12-40	15	40	M12x1.75	22	12	8	5	200
36xx-Rd12-40			Rd12					
36xx-16-54	21	54	M16x2.0	27	15	13	12	100
36xx-Rd16-54			Rd16					
36xx-20-69	27	69	M20x2.5	35	22	15	20	50
36xx-Rd20-69			Rd20					
36xx-24-78	32	78	M24x3.0	40	23	18	25	25
36xx-Rd24-78			Rd24					
36xx-30-103	40	103	M30x3.5	56	28	22	40	10
36xx-Rd30-103			Rd30					

*Remark: For material code, xx = 40, 50, 55, 60 & 80 etc