

Mini-Pro optical time-domain reflectometer



VT-42MP



Fiber & RJ45

Photoelectric Integration
Multi-Functions

3.5 inch

3.5 inch Color LCD

9

9 Functional Modules

RJ45

Sequence&Length&Tracker

27 dB

27dB Dynamic Range



iLOM-EVENT MAP



9 Functional Modules
meet all you need



iLOM-Event Map
intelligent link analysis



Online detection
APD effective protect



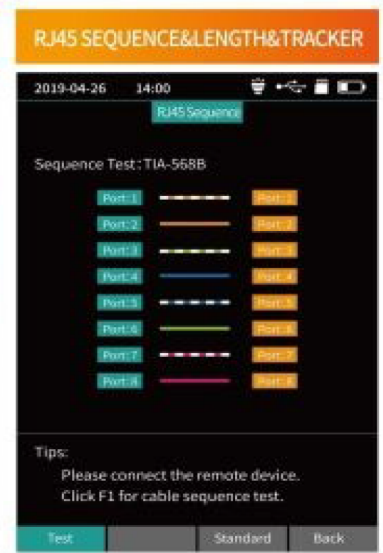
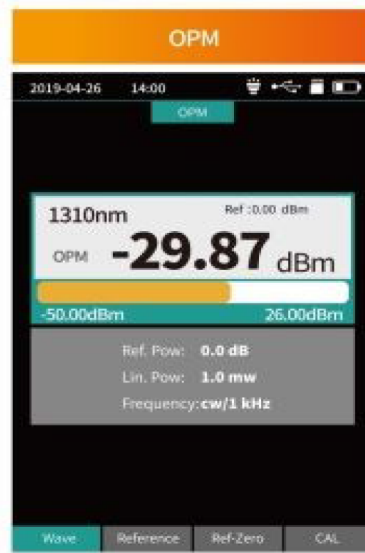
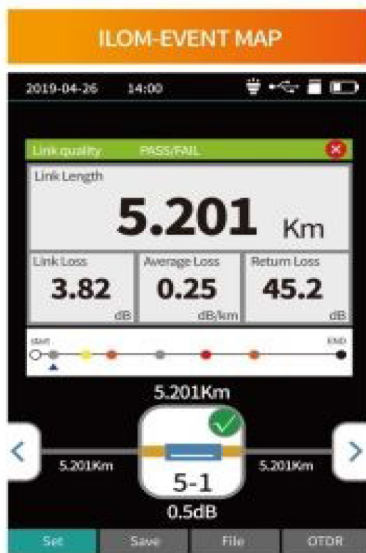
Remote Upgrade
Latest Technical Support

RJ45

RJ45 Test
Broadband install and maintain

Mini-Pro OTDR series

Quality assurance promises, technology to create future



27dB Dynamic Range
64km Precision Test
Online Detection -APD Effective Protection
1m Event Blind Zone



OTDR: Optical Time Domain Reflectometer
OPM: -50~+26dBm Optical Power Meter
VFL: Visual Fault Locator
LS: Stabilized Light Source
RJ45: Ethernet Cable Sequence Measurement
Flashlight



Dual-wavelength OTDR
ILOM-Event Map
RJ45 Cable Length Measurement
RJ45 Line-Tracker Function



One-click Automatic Test
File Auto-saving
Test Results Automatic Analysis



SOR File Batch Processing
Remote Upgrade
Batch Export of USB Data Files



12h Continuous measurement time
20h Super-long Standby
Working Temperature: -10°C ~ +50°C

Technical Specifications

Mini-Pro OTDR	
Model	VT-42MP
Wavelength	1310nm/1550nm ± 20nm
Fiber Type	SM
Dynamic Range	27dB
Event Blind Zone	1m
ATT Blind Zone	6m
Test Range	64km
Pulse Width	3ns~10us
Ranging accuracy	± (1m+ Sampling interval +0.003%×Test distance)
Loss accuracy	±0.05dB/dB
Sampling Points	16k~128k
Sampling resolution	0.05m~8m
Reflection accuracy	±3dB
Data Storage	Internal: ≥1000; External: TF Card
Laser Safety Level	Class II
File format	SOR Standard file format
Connector	SC/APC (Interchangeable FC、ST)

OPM	
Wave Range	800nm~1700nm
Interface Type	Universal Joint FC/SC/ST
Test Range	-50dBm~+26dBm
Uncertainty	±5%
Frequency Identification	CW/270/330/1k/2kHz
Calibration wavelength	850/980/1300/1310/1490/1550/1625/1650nm
LS	
LD Type	FP-LD
Wavelength	1310nm/1550nm±20nm
Output Power	≥-5dBm
Modulation Frequency	270/330/1k/2kHz
Stability	CW, ±0.5dB/15min (Test after 15 minutes of preheating)
Connector	SC/APC (Interchangeable FC、ST)
VFL	
Wavelength	650nm±20nm
Output Power	≥10mW
Mode	CW/1Hz/2Hz
Laser Safety Level	Class IIIB
Connector	FC/SC/ST
RJ45 Cable Length Measurement	
Test Range	300m
Other Parameters	
Display	3.5 inch Color LCD
Data Interface	Micro USB
External storage	TF Card
Power Supply	Polymer Li-Battery: 3.7V, 4000mAh Adapter: 5VDC, 2A
Battery Life	Standby>20h; Measuring time>12h
Operating Temperature	-10℃~+50℃
Storage Temperature	-40℃~+70℃
Relative Humidity	0~95%Non Condensing
Size	173mm×82mm×37mm
Weight	≤350g
Functions: Blue, OTDR/EVENT MAP/OPM/LS/VFL/RJ45 Sequence/RJ45 Cable Tracker(Additional purchase detector)/RJ45 Line length Flashlight	

Note:

- ①Test temperature is 25℃+2℃, maximum pulse width, the average time is more than 3 minutes.
- ②Test conditions of Event Blind Zone are minimum range, minimum pulse width, reflection loss of optical fiber end (> 45dB), typical value.

Configuration List

NO.	NAME	QUANTITY	Remarks
1	VT-42MP	1	Battery included
2	Connector SC/APC (*)	1	
3	Connector FC	1	
4	Power adaptor AC/DC	1	
5	USB(Analysis software/User's Manual)	1	
6	Clean Cotton Slices, Bag	1	
7	User's Manual...	1	
8	Coupling SC/APC-SC/APC	1	
9	Optical Patchcord SC/APC-SC/UPC	1	

(*) SC/UPC, SC/APC is option