

FUTURE

**YOUR VOICE
MATTERS!**



**YOUR VOICE
MATTERS!**

VOTER

THIS BOOKLET BELONGS TO

WHAT IS VOTING?

VOTING IS WHEN PEOPLE CHOOSE WHAT THEY THINK IS BEST.

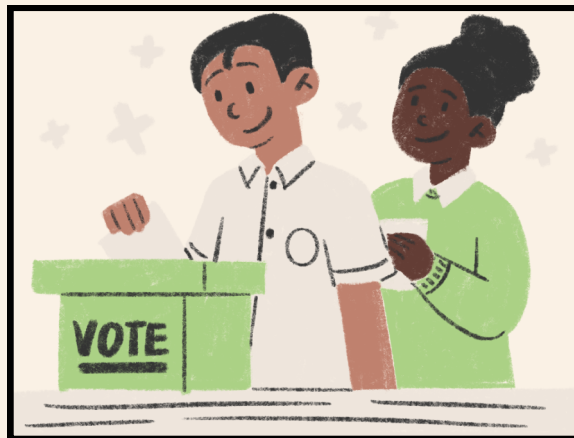
ADULTS VOTE TO DECIDE:

- **LEADERS**
- **COMMUNITY RULES**
- **IMPORTANT DECISIONS**

VOTING HELPS EVERYONE HAVE A VOICE.

EVEN THOUGH KIDS CAN'T VOTE YET, YOU ARE FUTURE VOTERS!

ACTIVITY: DRAW A CHECKMARK ✓ BELOW THE PICTURE THAT SHOWS VOTING.





WORD SEARCH



N	P	Y	C	Y	L	C	R	S	Y	O	U	R	T	L	V	C	O	R
O	R	T	A	R	E	O	E	E	I	T	C	E	O	O	A	M	E	A
I	E	O	M	A	A	U	G	N	T	T	N	O	F	N	L	K	E	V
T	S	G	P	M	D	N	I	A	R	S	H	U	D	U	R	L	O	O
C	I	E	A	I	E	T	S	T	H	C	M	I	O	O	T	I	A	J
E	D	T	I	R	R	Y	T	O	S	A	D	E	W	C	C	U	J	B
L	E	H	G	P	F	C	E	R	Y	A	C	L	U	E	I	T	R	R
E	N	E	N	M	P	L	R	O	T	I	L	E	T	O	V	U	R	E
D	T	R	R	F	D	E	R	E	F	O	T	G	E	N	E	R	A	L
T	C	E	P	S	E	R	V	F	P	F	R	I	E	N	D	S	Q	M
T	T	E	A	M	K	K	O	G	O	V	E	R	N	O	R	H	Q	T

FIND ALL WORDS IN THE LIST. WORDS CAN GO IN ANY DIRECTION AND SHARE LETTERS AS WELL AS CROSS OVER EACH OTHER.

WORDS TO FIND

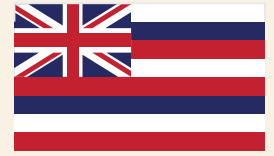
BALLOT
FUTURE
LEADER
OFFICE
PRIMARY
SCHOOL
TERM

VOTE
CAMPAIGN
ELECTION
GENERAL
REGISTER
SENATOR
FRIENDS

TOGETHER
GOVERNOR
MAYOR
PRESIDENT
RESPECT
TEAM
VOICE

COUNTY CLERK
CANDIDATE
MAUI COUNTY
POLL WORKER

VOTING IN HAWAI'I



VOTING HELPS PEOPLE CHOOSE THEIR LEADERS.

FIRST, THERE IS A PRIMARY ELECTION TO CHOOSE WHICH CANDIDATES WILL BE IN THE GENERAL ELECTION. THE GENERAL ELECTION DECIDES WHO WINS.

TO REGISTER TO VOTE IN HAWAI'I, A PERSON MUST BE

- **A U.S. CITIZEN**
- **BE A HAWAI'I RESIDENT**
- **BE 16 YEARS OLD.**

A PERSON MUST BE 18 YEARS OLD ON ELECTION DAY TO VOTE.

PEOPLE CAN REGISTER AT THE COUNTY CLERK'S OFFICE OR ONLINE.

IN HAWAI'I, MOST PEOPLE VOTE BY MAIL, BUT THEY CAN ALSO VOTE EARLY IN PERSON.

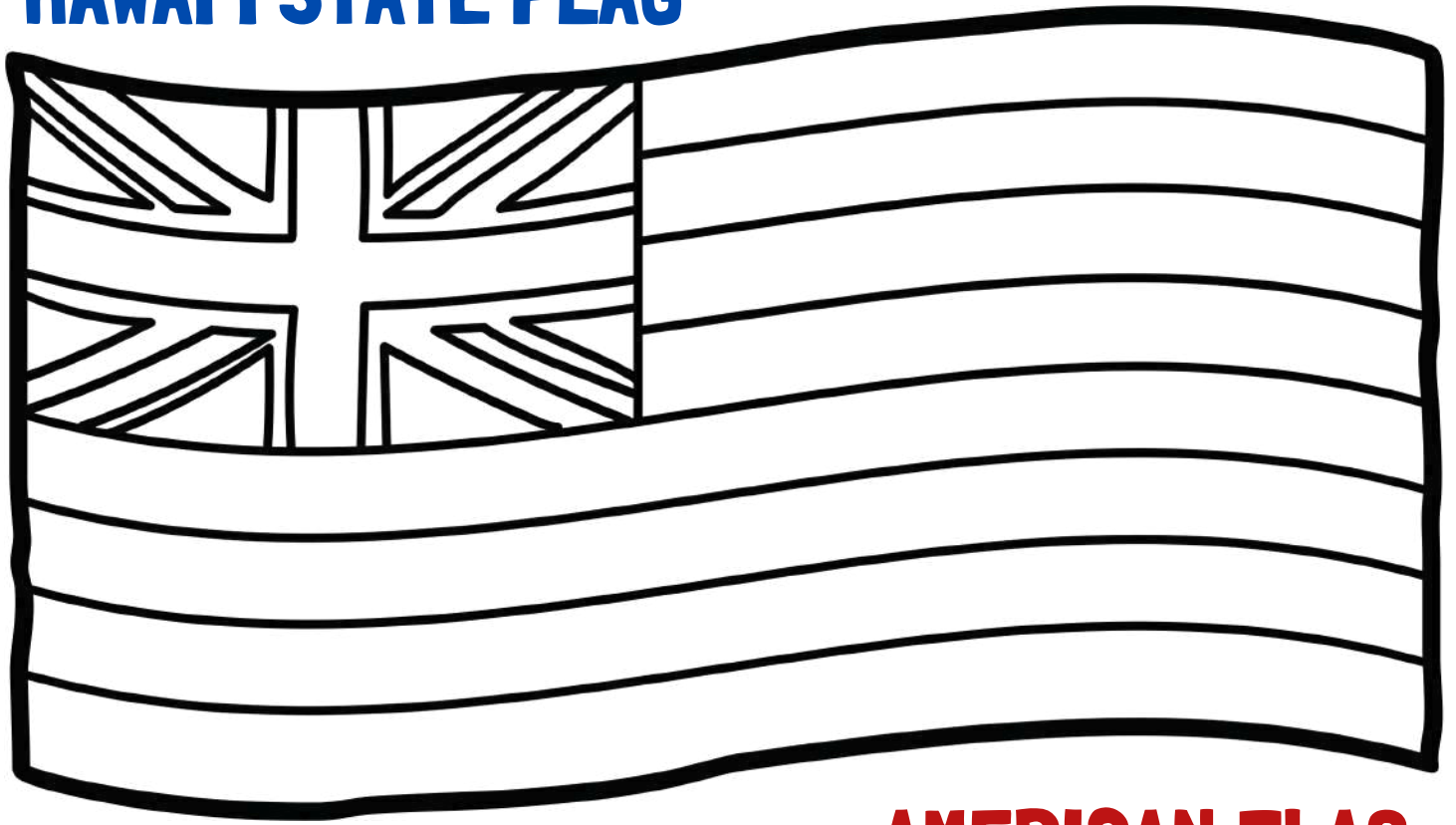
IF SOMEONE IS AWAY FROM HOME, THEY CAN ASK TO HAVE THEIR BALLOT MAILED TO ANOTHER ADDRESS.



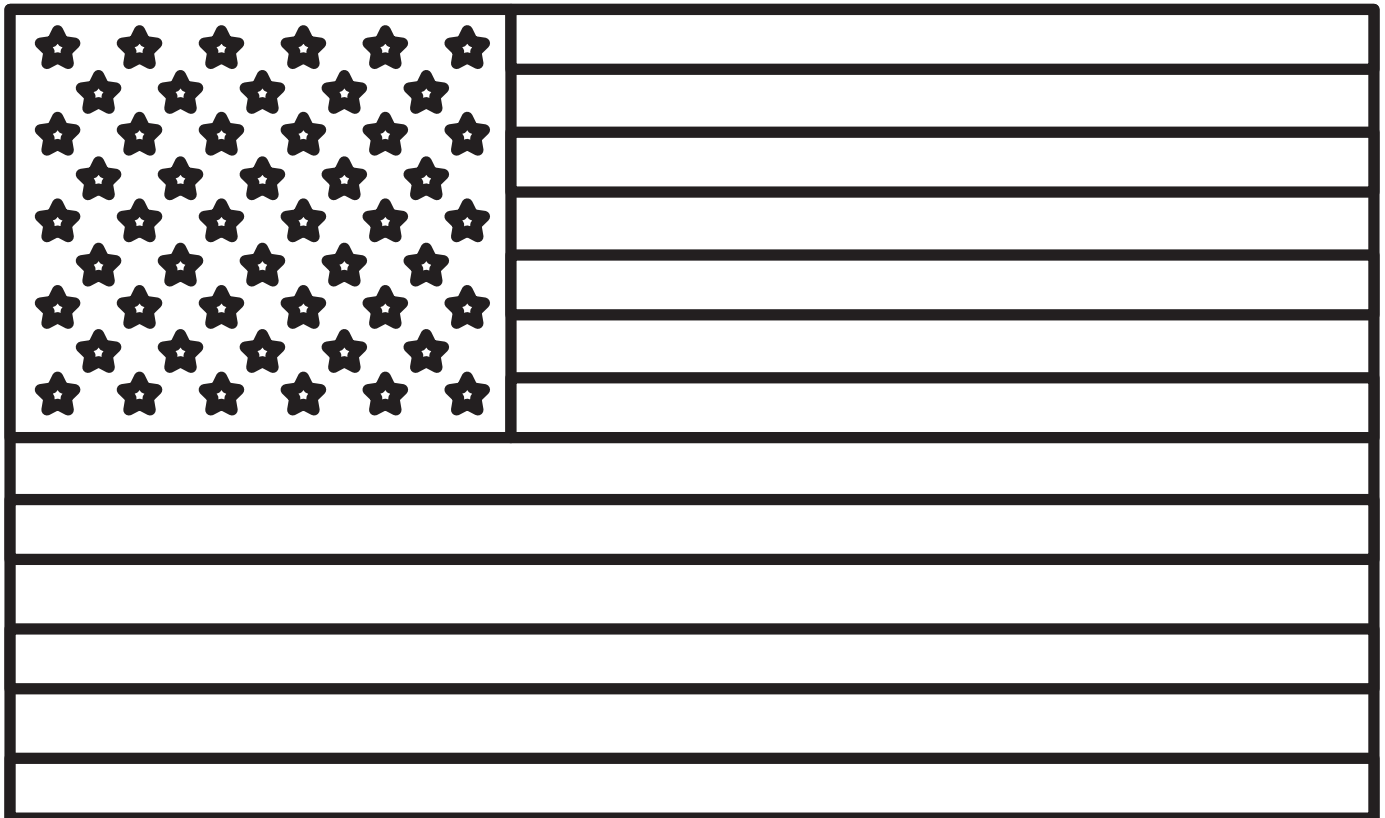
COLOR THE FLAGS



HAWAI'I STATE FLAG



AMERICAN FLAG



FILL-IN-THE-BLANK

FILL IN THE BLANKS USING THE ANSWER KEY BELOW

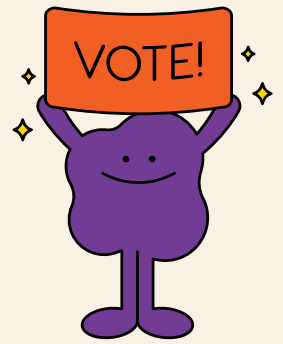


ANSWER KEY

LĀNA'I	GOVERNOR	9
CITIZEN	COUNTY CLERK'S OFFICE	16
RESIDENT	VOTER SERVICE	18

1. THE _____ IS THE TOP LEADER OF THE STATE GOVERNMENT.
2. MAUI COUNTY CONSISTS OF FOUR ISLANDS: MAUI, MOLOKA'I, KAHO'OLAWA, AND _____ .
3. PEOPLE CAN REGISTER TO VOTE AT THE _____ OR ONLINE.
4. A PERSON MUST BE _____ ON ELECTION DAY TO VOTE.
5. IN HAWAI'I, MOST PEOPLE VOTE BY MAIL, BUT THEY CAN ALSO VOTE EARLY AT ONE OF THE COUNTY'S _____ CENTERS.
6. THERE ARE _____ MEMBERS OF THE MAUI COUNTY COUNCIL.
7. A PERSON MUST BE A _____ OF THE STATE OF HAWAI'I AND A UNITED STATES _____ TO REGISTER TO VOTE.
8. A PERSON CAN PRE-REGISTER TO VOTE WHEN THEY TURN _____ YEARS OLD.

FUN FACTS ABOUT ELECTIONS!



SOME PEOPLE COLLECT "I VOTED" STICKERS FROM EVERY ELECTION.



HAWAI'I BECAME A STATE IN 1959.



THE FIRST U.S. PRESIDENTIAL ELECTION WAS IN 1789 AND GEORGE WASHINGTON WON.



HIS FACE IS ON THE ONE DOLLAR BILL.

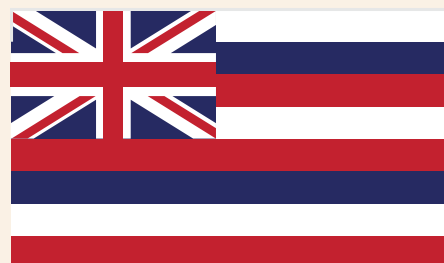
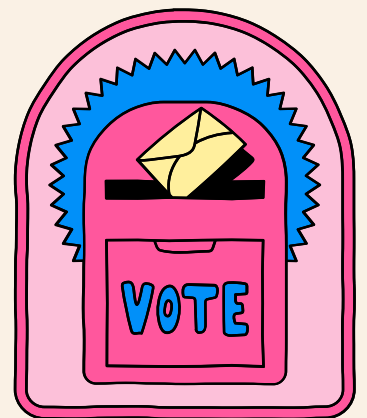


WOMEN ACROSS THE U.S. GAINED THE RIGHT TO VOTE IN 1920.

U.S. GENERAL ELECTION DAY IS ALWAYS IN NOVEMBER BECAUSE IT USED TO BE THE BEST TIME FOR FARMERS TO TRAVEL.



YOU CAN DROP OFF YOUR BALLOT AT DROPBOXES PLACED ACROSS THE ISLANDS SO PEOPLE CAN EASILY RETURN THEIR VOTES.



HAWAI'I HAD IT'S FIRST ELECTION IN 1960

ELECTION JUMBLE

UNSCRAMBLE THE WORDS BELOW. ARRANGE THE COLORED LETTERS TO ANSWER THE QUESTION BELOW

T O V R E				
■				

L W A		
	■	

L A T L O B					
				■	

F O F I C E					
					■

N I T O E L E C							
			■				

D I N G A T E A D								
				■				

YOUR VOTE MATTERS

WHAT DOES VOTING GIVE YOU?

■	■	■	■	■	■
—	—	—	—	—	—

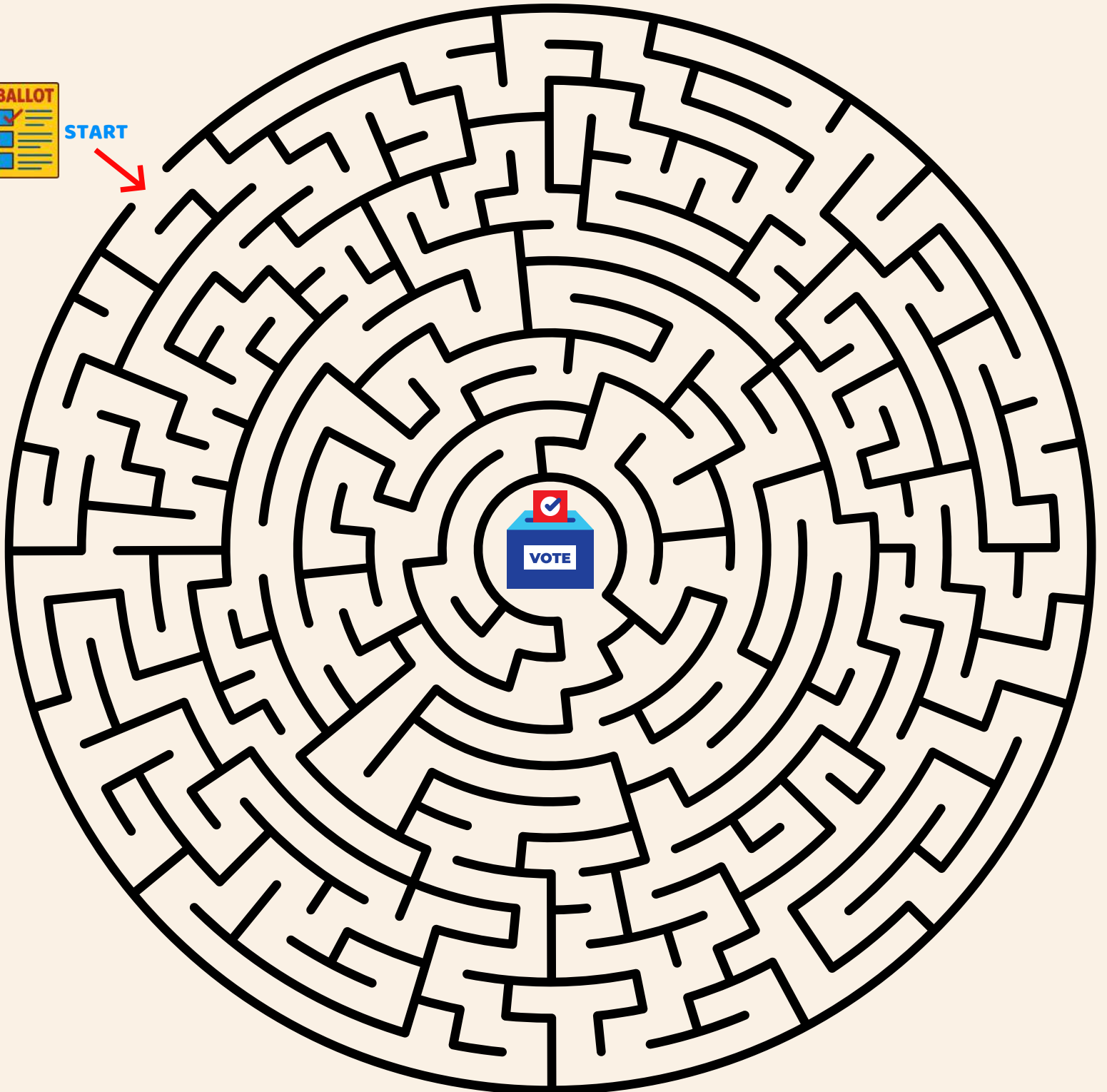


THE GREAT VOTING MAZE

TAKE YOUR BALLOT TO THE BALLOT BOX

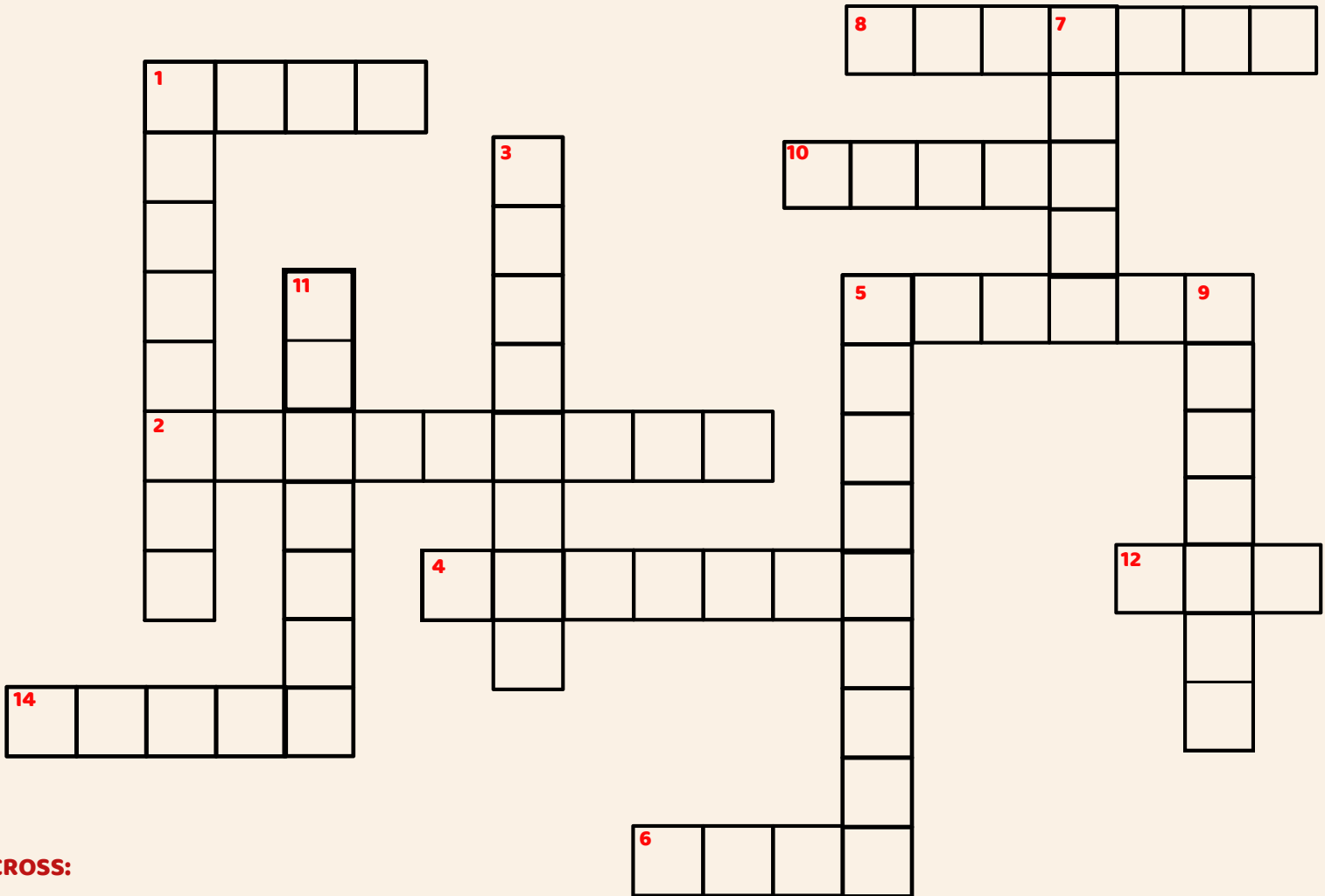


START



ELECTION CROSSWORD CHALLENGE

**CAN YOU SOLVE THE ELECTION CROSSWORD?
READ THE CLUES AND FILL IN THE BOXES TO LEARN ABOUT VOTING!**



ACROSS:

- 1. NUMBER OF MAUI COUNTY COUNCIL MEMBERS
- 2. YOU DROP YOUR BALLOT OFF HERE
- 4. ONE OF THE ISLANDS OF MAUI COUNTY
- 5. YOU CAN REGISTER TO VOTE ONLINE OR AT THE COUNTY _____ OFFICE
- 6. WHEN YOU TURN 18, YOU CAN _____ IN AN ELECTION
- 8. THIS TYPE OF ELECTION IS HELD IN AUGUST
- 10. A TEAM IN POLITICS
- 12. THE HAWAI'I FLAG INCLUDES THIS COLOR
- 14. VOTE WITH _____

DOWN:

- 1. THE MONTH YOU VOTE IN THE GENERAL ELECTION
- 3. WE VOTE FOR LEADERS DURING AN _____
- 5. A PERSON RUNNING FOR OFFICE
- 7. LEADER OF MAUI COUNTY
- 9. YOU MUST BE THIS AGE TO REGISTER TO VOTE
- 11. A RESPONSIBILITY TO HELP YOUR COMMUNITY

VOTE & SEEK ADVENTURE

FIND THE HIDDEN PICTURES BELOW:



WHAT IS VOTING?

VOTING IS WHEN PEOPLE CHOOSE WHAT THEY THINK IS BEST.

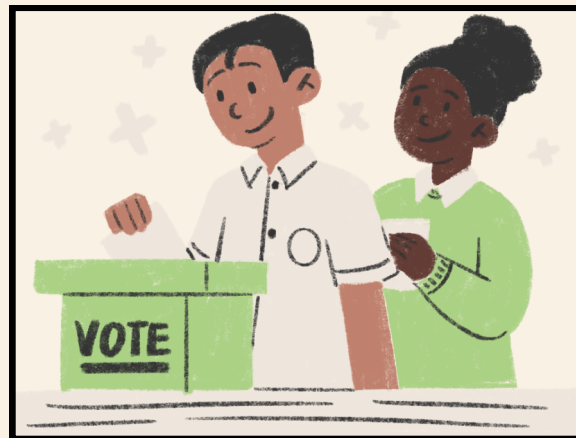
ADULTS VOTE TO DECIDE:

- **LEADERS**
- **COMMUNITY RULES**
- **IMPORTANT DECISIONS**

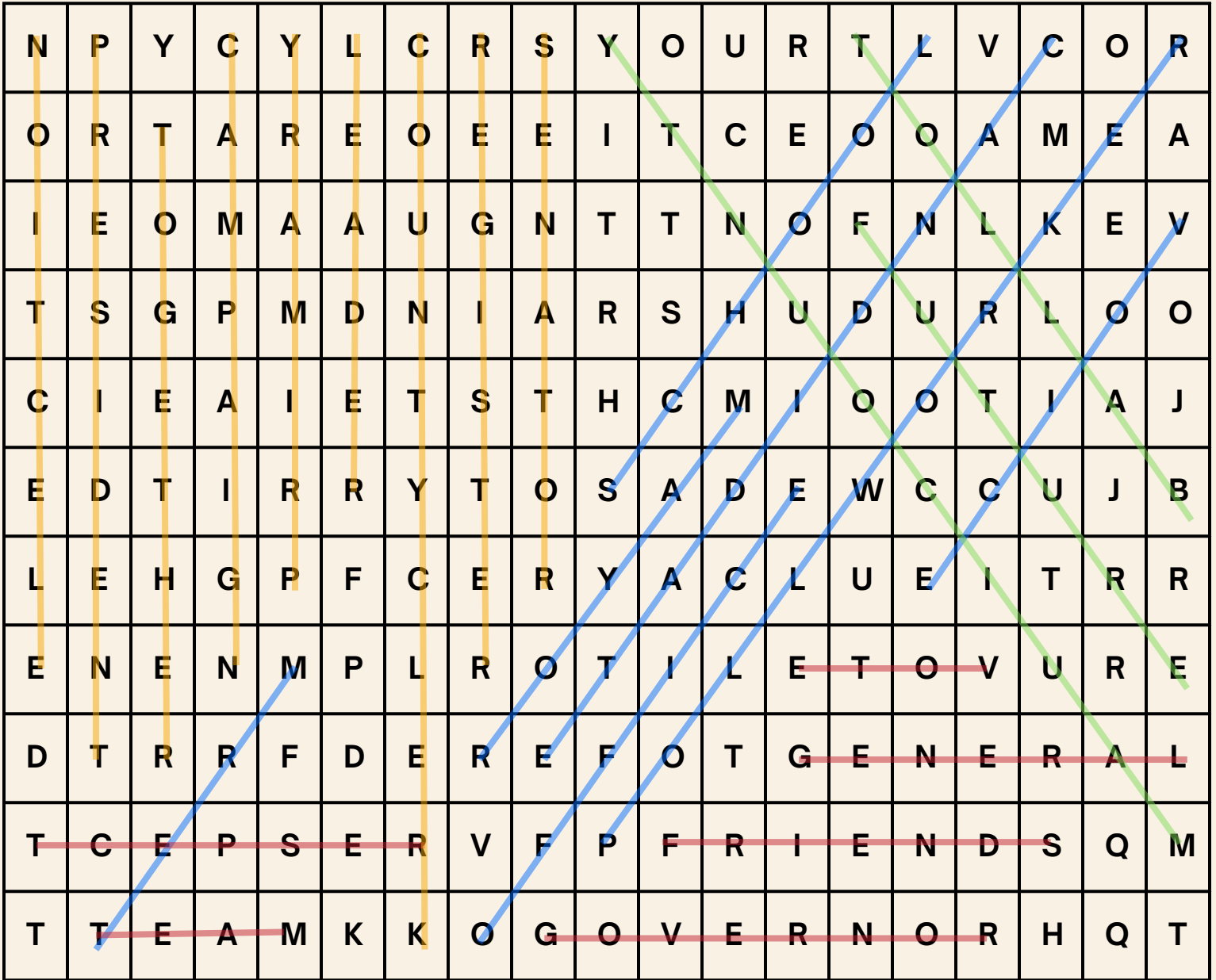
VOTING HELPS EVERYONE HAVE A VOICE.

EVEN THOUGH KIDS CAN'T VOTE YET, YOU ARE FUTURE VOTERS!

ACTIVITY: DRAW A CHECKMARK ✓ BELOW THE PICTURE THAT SHOWS VOTING.



WORD SEARCH



FIND ALL WORDS IN THE LIST. WORDS CAN GO IN ANY DIRECTION AND SHARE LETTERS AS WELL AS CROSS OVER EACH OTHER.

WORDS TO FIND

BALLOT

FUTURE

LEADER

OFFICE

PRIMARY

SCHOOL

TERM

VOTE

CAMPAIGN

ELECTION

GENERAL

REGISTER

SENATOR

FRIENDS

TOGETHER

GOVERNOR

MAYOR

PRESIDENT

RESPECT

TEAM

VOICE

COUNTY CLERK

CANDIDATE

MAUI COUNTY

POLL WORKER

FILL-IN-THE-BLANK

FILL IN THE BLANKS USING THE ANSWER KEY BELOW

ANSWER KEY

LĀNA'I	GOVERNOR	9
CITIZEN	COUNTY CLERK'S OFFICE	16
RESIDENT	VOTER SERVICE	18

1. THE **GOVERNOR** IS THE TOP LEADER OF THE STATE GOVERNMENT.
2. MAUI COUNTY CONSISTS OF FOUR ISLANDS: MAUI, MOLOKA'I, KAHO'OLAWA, AND **LĀNA'I**.
3. PEOPLE CAN REGISTER TO VOTE AT THE **COUNTY CLERK'S OFFICE** OR ONLINE.
4. A PERSON MUST BE **18** ON ELECTION DAY TO VOTE.
5. IN HAWAI'I, MOST PEOPLE VOTE BY MAIL, BUT THEY CAN ALSO VOTE EARLY AT ONE OF THE COUNTY'S **VOTER SERVICE** CENTERS.
6. THERE ARE **9** MEMBERS OF THE MAUI COUNTY COUNCIL.
7. A PERSON MUST BE A **RESIDENT** OF THE STATE OF HAWAI'I AND A UNITED STATES **CITIZEN** TO REGISTER TO VOTE.
8. A PERSON CAN PRE-REGISTER TO VOTE WHEN THEY TURN **16** YEARS OLD.



ELECTION JUMBLE

UNSCRAMBLE THE WORDS BELOW. ARRANGE THE COLORED LETTERS TO ANSWER THE QUESTION BELOW

T O V R E
V O T E R

L W A
L A W

L A T L O B
B A L L O T

F O F I C E
O F F I C E

N I T O E L E C
E L E C T I O N

D I N G A T E A D
C A N D I D A T E

YOUR VOTE MATTERS

WHAT DOES VOTING GIVE YOU?

A V O I C E



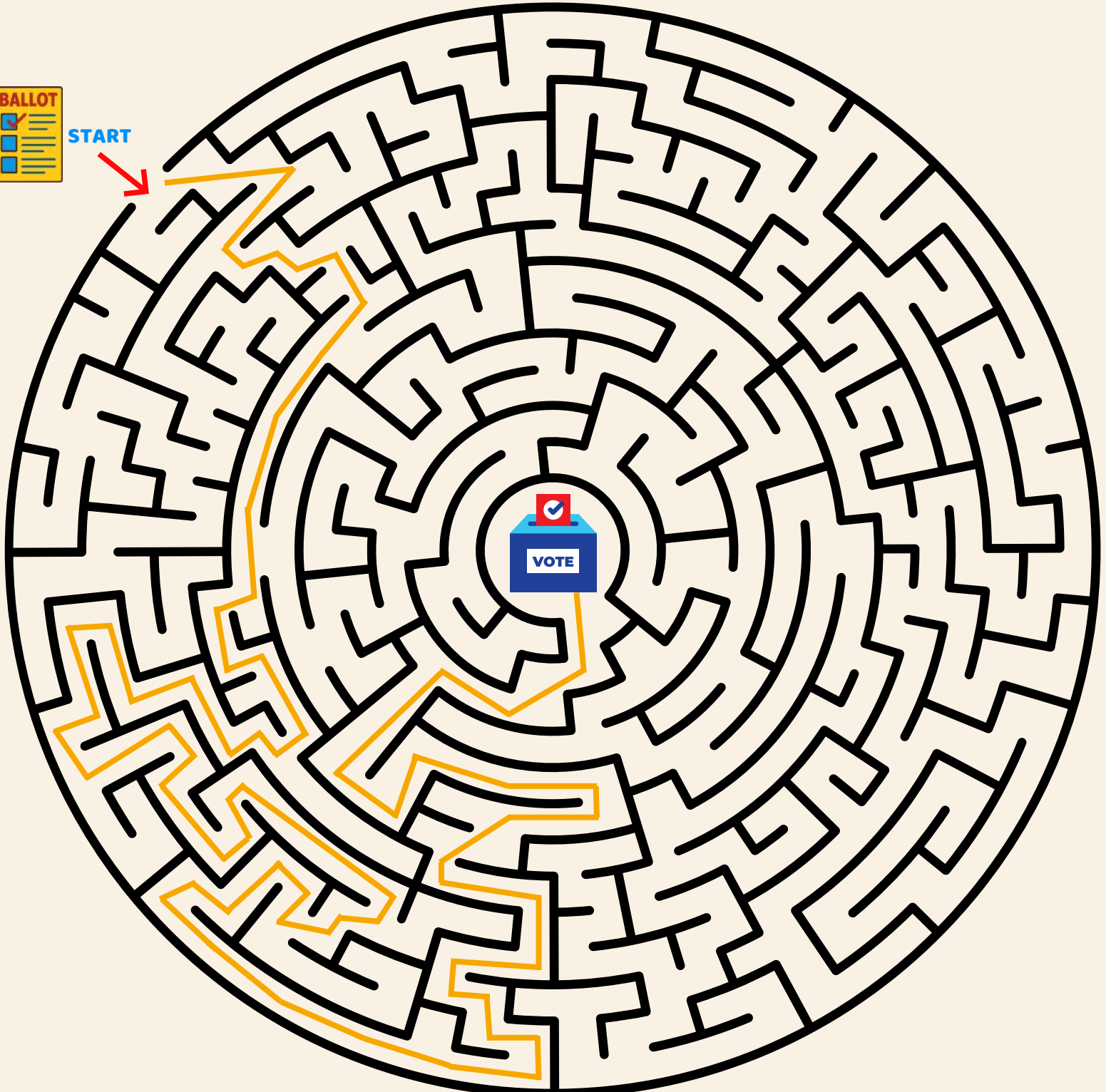
ANSWER KEY

THE GREAT VOTING MAZE

TAKE YOUR BALLOT TO THE BALLOT BOX

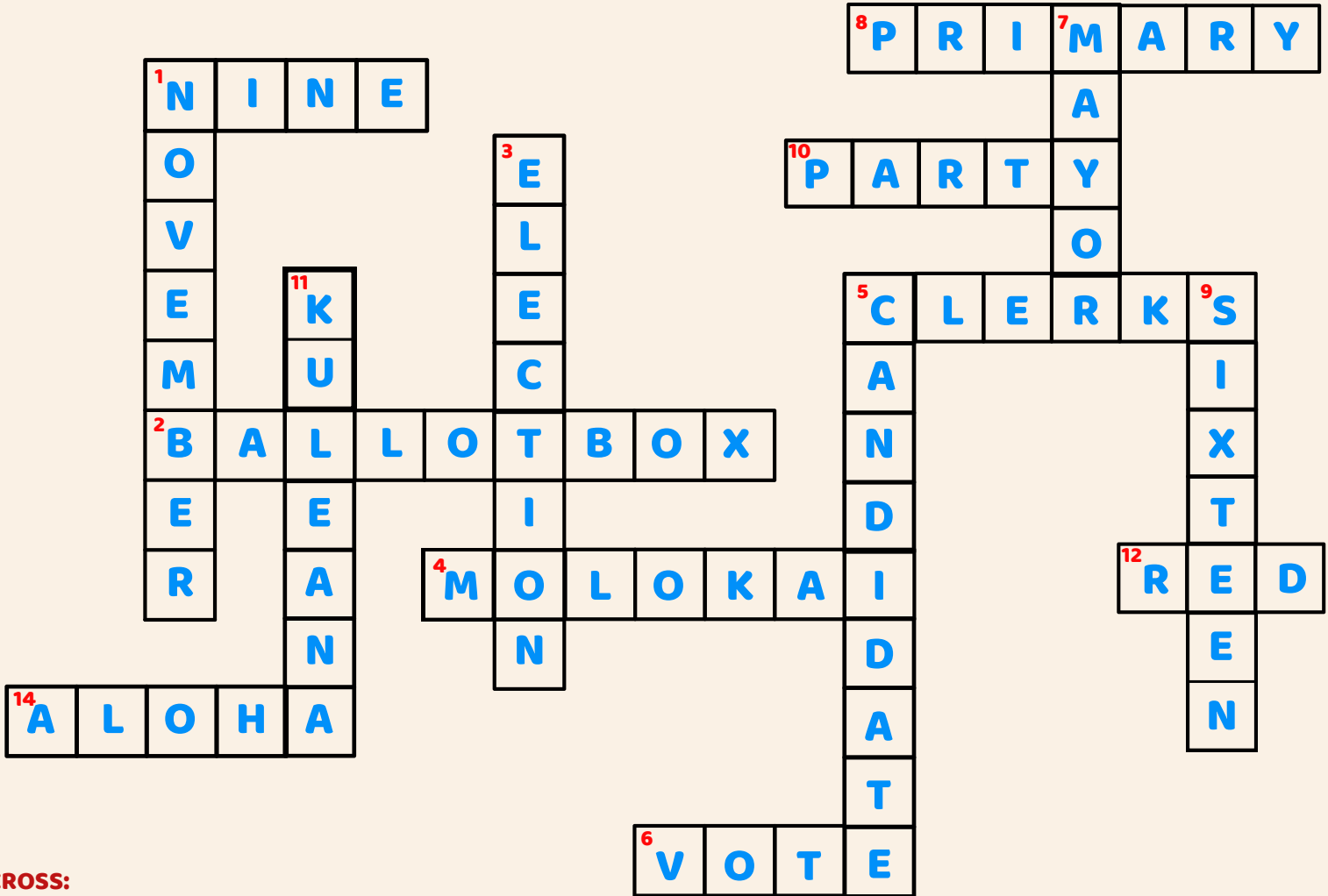


START



ELECTION CROSSWORD CHALLENGE

CAN YOU SOLVE THE ELECTION CROSSWORD?
 READ THE CLUES AND FILL IN THE BOXES TO LEARN ABOUT VOTING!



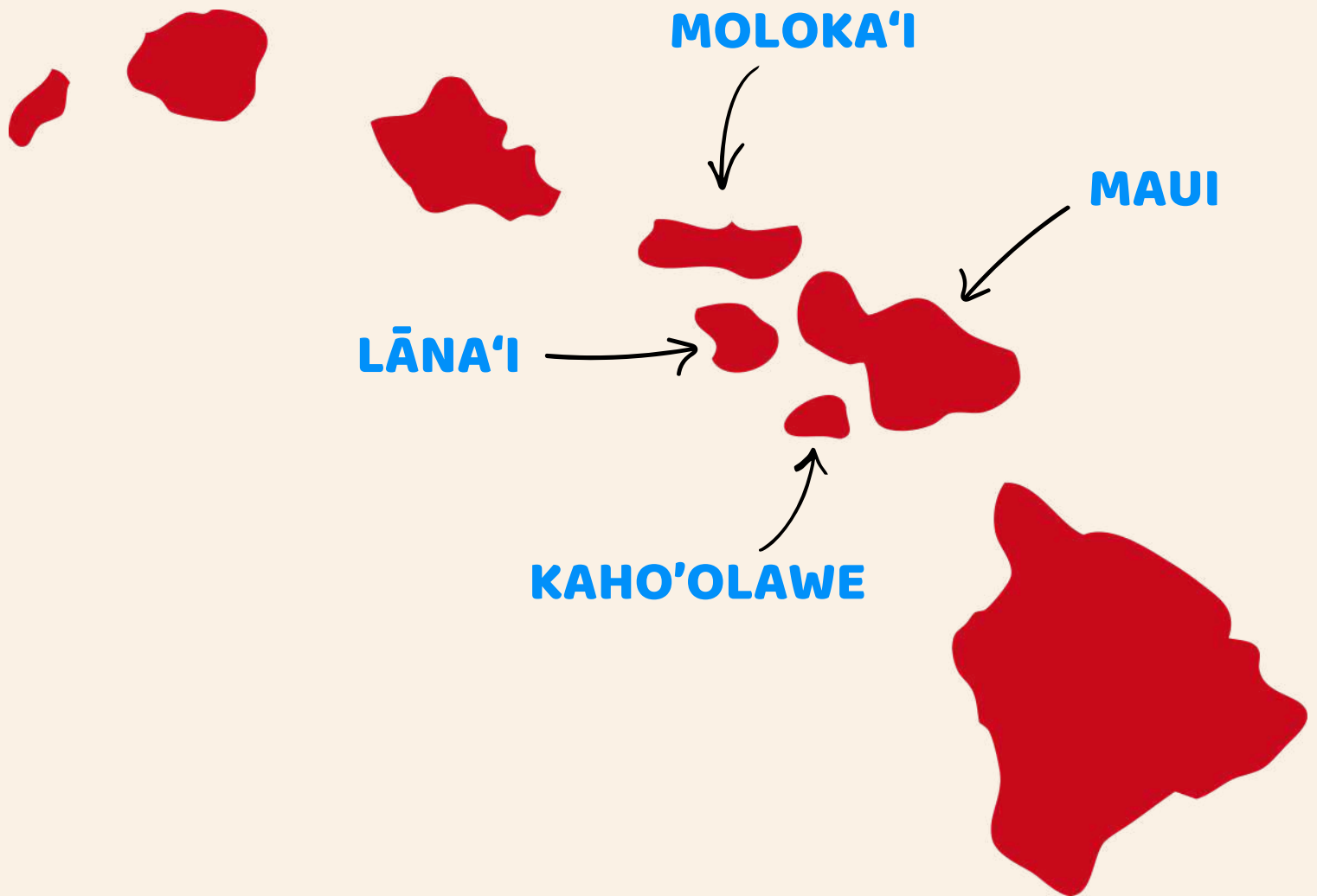
ACROSS:

- 1. NUMBER OF MAUI COUNTY COUNCIL MEMBERS
- 2. YOU DROP YOUR BALLOT OFF HERE
- 4. ONE OF THE ISLANDS OF MAUI COUNTY
- 5. YOU CAN REGISTER TO VOTE ONLINE OR AT THE COUNTY _____ OFFICE
- 6. WHEN YOU TURN 18, YOU CAN _____ IN AN ELECTION
- 8. THIS TYPE OF ELECTION IS HELD IN AUGUST
- 10. A TEAM IN POLITICS
- 12. THE HAWAI'I FLAG INCLUDES THIS COLOR
- 14. VOTE WITH _____

DOWN:

- 1. THE MONTH YOU VOTE IN THE GENERAL ELECTION
- 3. WE VOTE FOR LEADERS DURING AN _____
- 5. A PERSON RUNNING FOR OFFICE
- 7. LEADER OF MAUI COUNTY
- 9. YOU MUST BE THIS AGE TO REGISTER TO VOTE
- 11. A RESPONSIBILITY TO HELP YOUR COMMUNITY

THE ISLANDS OF MAUI COUNTY



MAUI COUNTY IS SPECIAL BECAUSE IT IS MADE UP OF FOUR ISLANDS. IT INCLUDES MAUI, MOLOKA'I, LĀNA'I, AND KAHO'OLAWE. EACH ISLAND IS DIFFERENT AND HAS ITS OWN PEOPLE, PLACES, AND STORIES. EVEN THOUGH THEY ARE ALL PART OF THE SAME COUNTY, EACH ISLAND IS UNIQUE AND IMPORTANT IN ITS OWN WAY.



**MAHALO FOR TAKING THE TIME TO LEARN ABOUT
THE IMPORTANCE OF VOTING.**

FOR MORE INFORMATION:

**OFFICE OF THE COUNTY CLERK
200 SOUTH HIGH STREET, ROOM 708
WAILUKU, HI 96793
(808) 270-7749**

[HTTPS://MAUICOUNTYVOTES.GOV/](https://mauicountyvotes.gov/)