

# FUTURE

**YOUR VOICE  
MATTERS!**



**YOUR VOICE  
MATTERS!**

# VOTER

**THIS BOOKLET BELONGS TO**

---

# WHAT IS VOTING?

**VOTING IS WHEN PEOPLE CHOOSE WHAT THEY THINK IS BEST.**

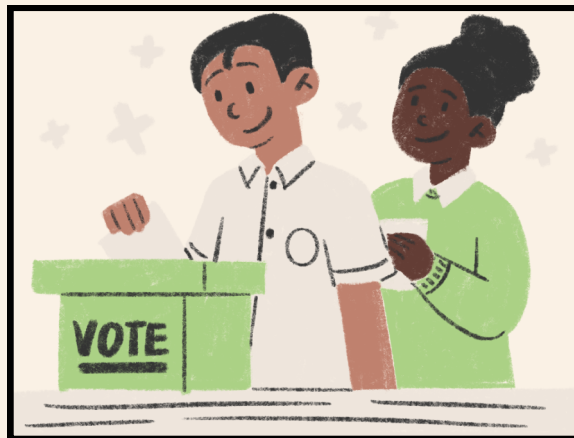
**ADULTS VOTE TO DECIDE:**

- **LEADERS**
- **COMMUNITY RULES**
- **IMPORTANT DECISIONS**

**VOTING HELPS EVERYONE HAVE A VOICE.**

**EVEN THOUGH KIDS CAN'T VOTE YET, YOU ARE FUTURE VOTERS!**

**ACTIVITY: DRAW A CHECKMARK ✓ BELOW THE PICTURE THAT SHOWS VOTING.**



# WORD SEARCH

N	P	Y	C	Y	L	C	R	S	Y	O	U	R	T	L	V	C	O	R
O	R	T	A	R	E	O	E	E	I	T	C	E	O	O	A	M	E	A
I	E	O	M	A	A	U	G	N	T	T	N	O	F	N	L	K	E	V
T	S	G	P	M	D	N	I	A	R	S	H	U	D	U	R	L	O	O
C	I	E	A	I	E	T	S	T	H	C	M	I	O	O	T	I	A	J
E	D	T	I	R	R	Y	T	O	S	A	D	E	W	C	C	U	J	B
L	E	H	G	P	F	C	E	R	Y	A	C	L	U	E	I	T	R	R
E	N	E	N	M	P	L	R	O	T	I	L	E	T	O	V	U	R	E
D	T	R	R	F	D	E	R	E	F	O	T	G	E	N	E	R	A	L
T	C	E	P	S	E	R	V	F	P	F	R	I	E	N	D	S	Q	M
T	T	E	A	M	K	K	O	G	O	V	E	R	N	O	R	H	Q	T

FIND ALL WORDS IN THE LIST. WORDS CAN GO IN ANY DIRECTION AND SHARE LETTERS AS WELL AS CROSS OVER EACH OTHER.

## WORDS TO FIND

**BALLOT**

**FUTURE**

**LEADER**

**OFFICE**

**PRIMARY**

**SCHOOL**

**TERM**

**VOTE**

**CAMPAIGN**

**ELECTION**

**GENERAL**

**REGISTER**

**SENATOR**

**FRIENDS**

**TOGETHER**

**GOVERNOR**

**MAYOR**

**PRESIDENT**

**RESPECT**

**TEAM**

**VOICE**

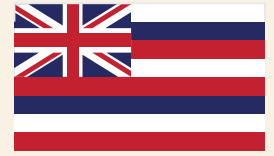
**COUNTY CLERK**

**CANDIDATE**

**MAUI COUNTY**

**POLL WORKER**

# VOTING IN HAWAI'I



**VOTING HELPS PEOPLE CHOOSE THEIR LEADERS.**

**FIRST, THERE IS A PRIMARY ELECTION TO CHOOSE WHICH CANDIDATES WILL BE IN THE GENERAL ELECTION. THE GENERAL ELECTION DECIDES WHO WINS.**

**TO REGISTER TO VOTE IN HAWAI'I, A PERSON MUST BE**

- **A U.S. CITIZEN**
- **BE A HAWAI'I RESIDENT**
- **BE 16 YEARS OLD.**

**A PERSON MUST BE 18 YEARS OLD ON ELECTION DAY TO VOTE.**

**PEOPLE CAN REGISTER AT THE COUNTY CLERK'S OFFICE OR ONLINE.**

**IN HAWAI'I, MOST PEOPLE VOTE BY MAIL, BUT THEY CAN ALSO VOTE EARLY IN PERSON.**

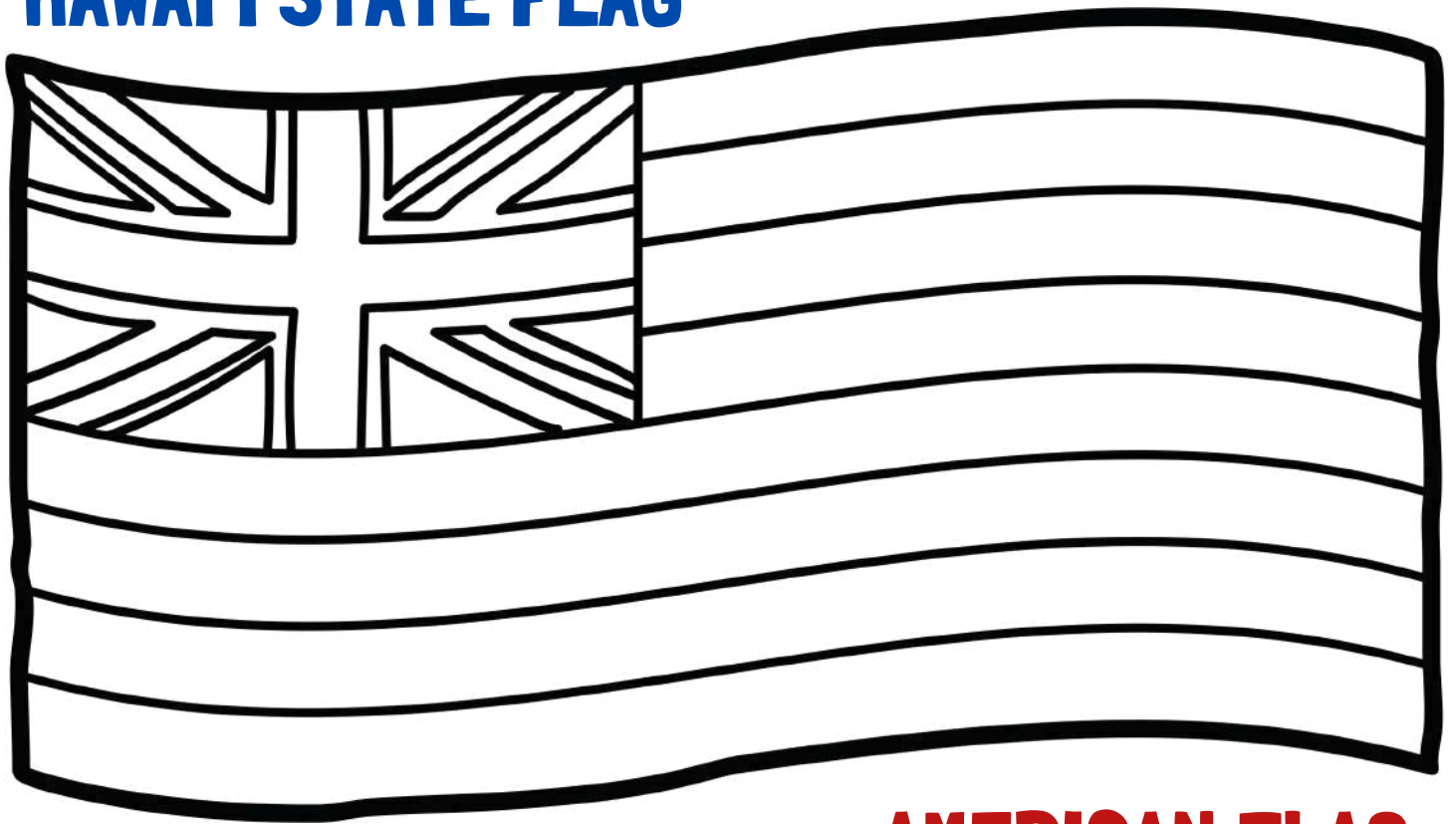
**IF SOMEONE IS AWAY FROM HOME, THEY CAN ASK TO HAVE THEIR BALLOT MAILED TO ANOTHER ADDRESS.**



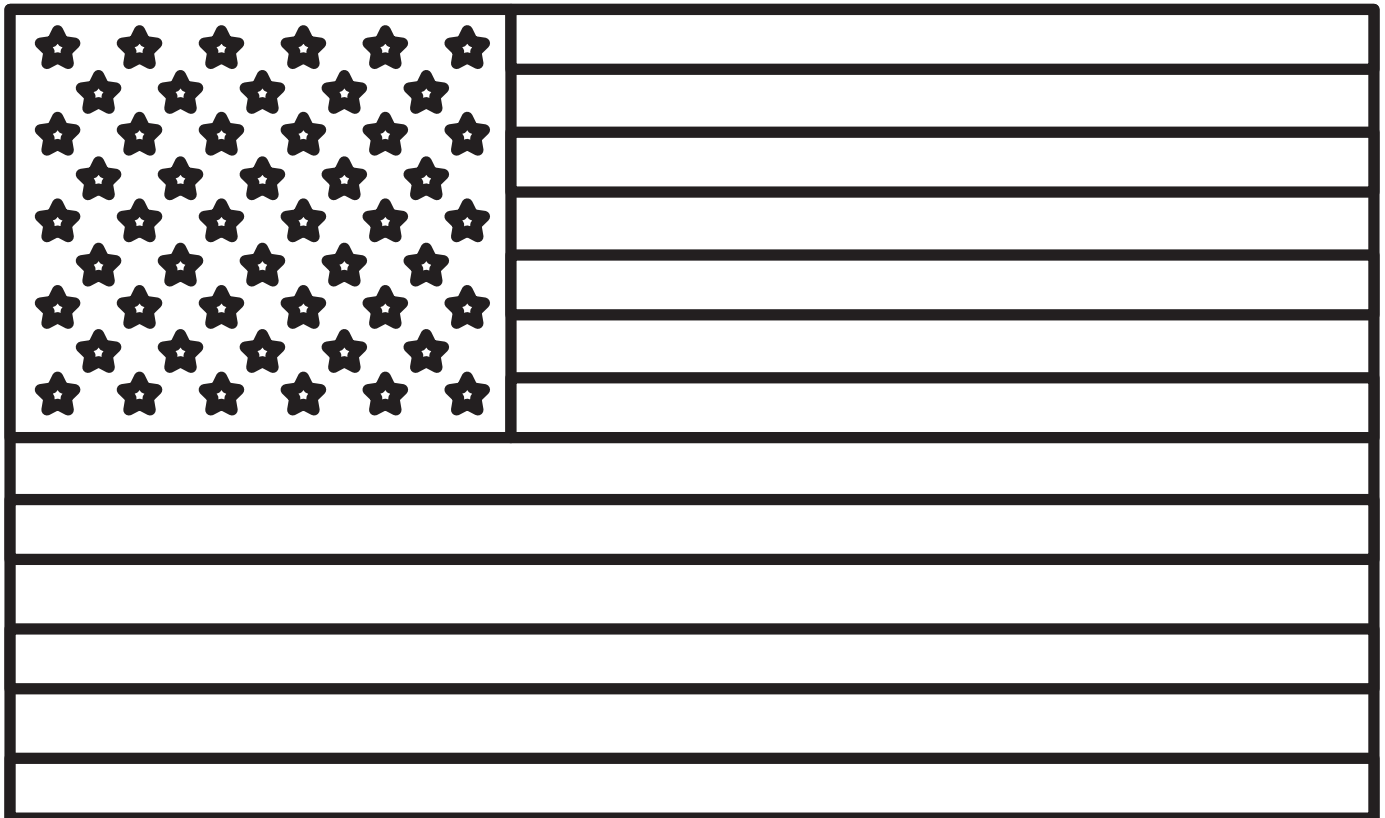
# COLOR THE FLAGS



## HAWAI'I STATE FLAG



## AMERICAN FLAG



# FILL-IN-THE-BLANK

FILL IN THE BLANKS USING THE ANSWER KEY BELOW

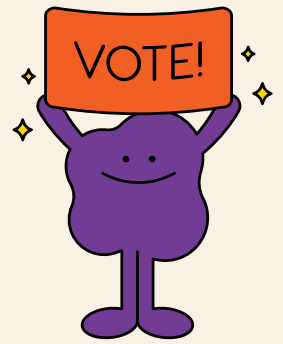


## ANSWER KEY

LĀNA'I	GOVERNOR	9
CITIZEN	COUNTY CLERK'S OFFICE	16
RESIDENT	VOTER SERVICE	18

1. THE \_\_\_\_\_ IS THE TOP LEADER OF THE STATE GOVERNMENT.
2. MAUI COUNTY CONSISTS OF FOUR ISLANDS: MAUI, MOLOKA'I, KAHO'OLAWA, AND \_\_\_\_\_ .
3. PEOPLE CAN REGISTER TO VOTE AT THE \_\_\_\_\_ OR ONLINE.
4. A PERSON MUST BE \_\_\_\_\_ ON ELECTION DAY TO VOTE.
5. IN HAWAI'I, MOST PEOPLE VOTE BY MAIL, BUT THEY CAN ALSO VOTE EARLY AT ONE OF THE COUNTY'S \_\_\_\_\_ CENTERS.
6. THERE ARE \_\_\_\_\_ MEMBERS OF THE MAUI COUNTY COUNCIL.
7. A PERSON MUST BE A \_\_\_\_\_ OF THE STATE OF HAWAI'I AND A UNITED STATES \_\_\_\_\_ TO REGISTER TO VOTE.
8. A PERSON CAN PRE-REGISTER TO VOTE WHEN THEY TURN \_\_\_\_\_ YEARS OLD.

# FUN FACTS ABOUT ELECTIONS!



**SOME PEOPLE COLLECT "I VOTED" STICKERS FROM EVERY ELECTION.**



**HAWAI'I BECAME A STATE IN 1959.**



**THE FIRST U.S. PRESIDENTIAL ELECTION WAS IN 1789 AND GEORGE WASHINGTON WON.**



**HIS FACE IS ON THE ONE DOLLAR BILL.**

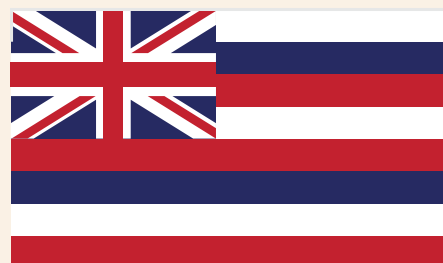
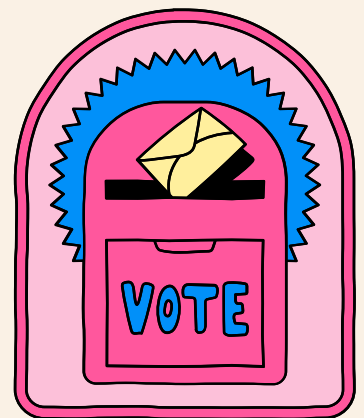


**WOMEN ACROSS THE U.S. GAINED THE RIGHT TO VOTE IN 1920.**

**U.S. GENERAL ELECTION DAY IS ALWAYS IN NOVEMBER BECAUSE IT USED TO BE THE BEST TIME FOR FARMERS TO TRAVEL.**



**YOU CAN DROP OFF YOUR BALLOT AT DROPBOXES PLACED ACROSS THE ISLANDS SO PEOPLE CAN EASILY RETURN THEIR VOTES.**



**HAWAI'I HAD ITS FIRST ELECTION IN 1960**

# ELECTION JUMBLE

UNSCRAMBLE THE WORDS BELOW. ARRANGE THE COLORED LETTERS TO ANSWER THE QUESTION BELOW

T O V R E				
■				

L W A		
	■	

L A T L O B					
				■	

F O F I C E					
					■

N I T O E L E C							
			■				

D I N G A T E A D								
				■				

**YOUR VOTE MATTERS**

WHAT DOES VOTING GIVE YOU?

■	■	■	■	■	■
—	—	—	—	—	—

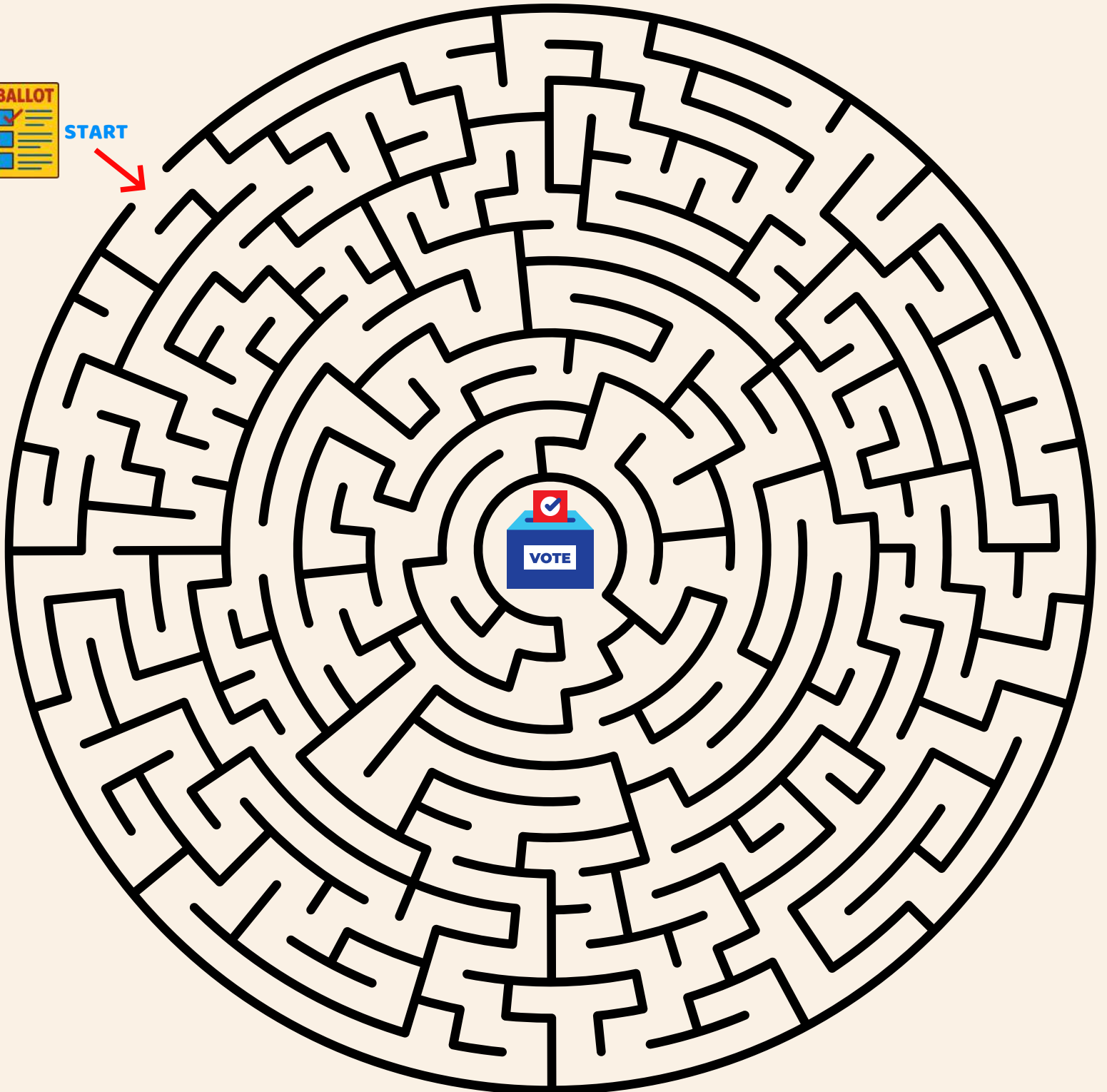


# THE GREAT VOTING MAZE

TAKE YOUR BALLOT TO THE BALLOT BOX

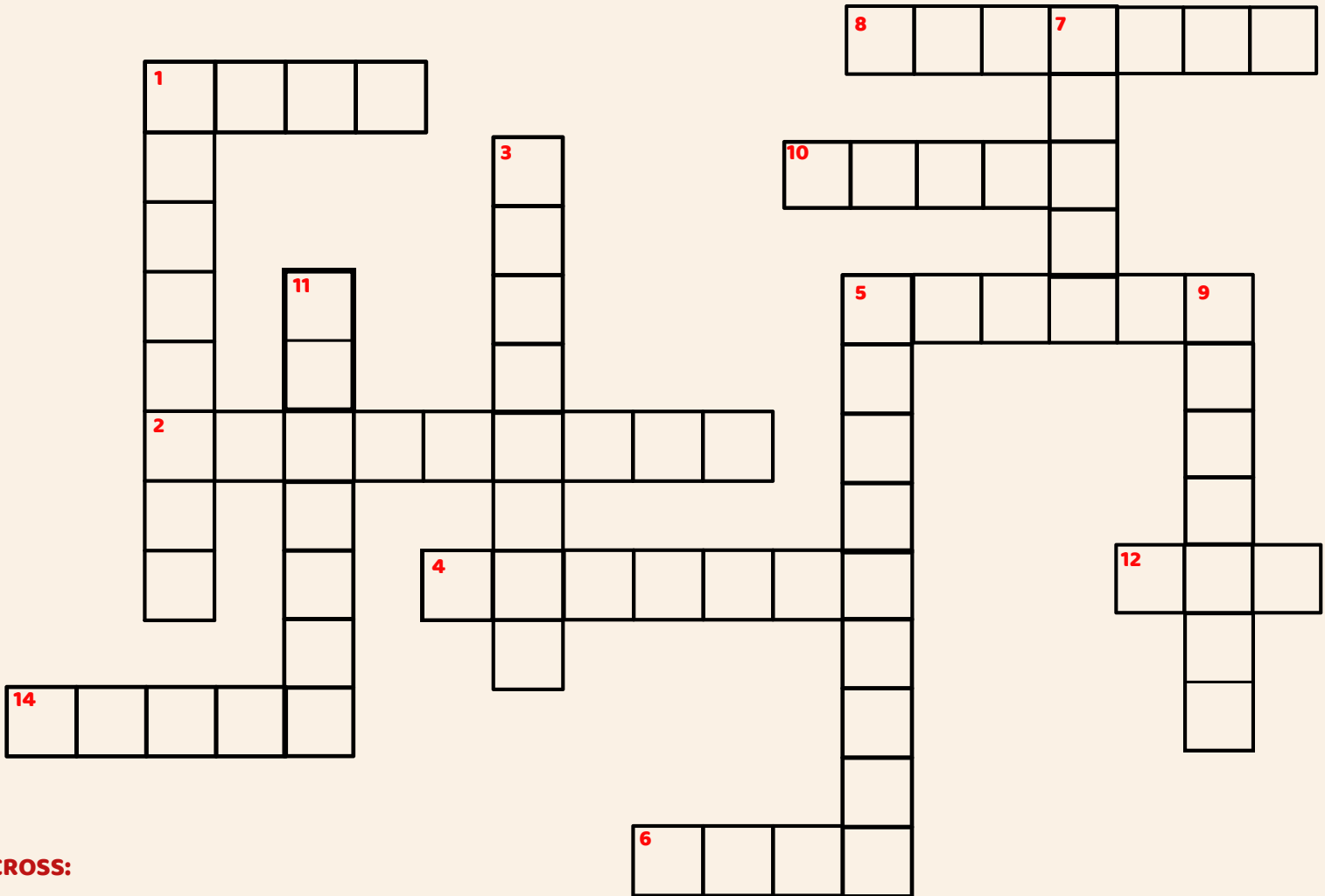


START



# ELECTION CROSSWORD CHALLENGE

**CAN YOU SOLVE THE ELECTION CROSSWORD?  
READ THE CLUES AND FILL IN THE BOXES TO LEARN ABOUT VOTING!**



**ACROSS:**

- 1. NUMBER OF MAUI COUNTY COUNCIL MEMBERS
- 2. YOU DROP YOUR BALLOT OFF HERE
- 4. ONE OF THE ISLANDS OF MAUI COUNTY
- 5. YOU CAN REGISTER TO VOTE ONLINE OR AT THE COUNTY \_\_\_\_\_ OFFICE
- 6. WHEN YOU TURN 18, YOU CAN \_\_\_\_\_ IN AN ELECTION
- 8. THIS TYPE OF ELECTION IS HELD IN AUGUST
- 10. A TEAM IN POLITICS
- 12. THE HAWAI'I FLAG INCLUDES THIS COLOR
- 14. VOTE WITH \_\_\_\_\_

**DOWN:**

- 1. THE MONTH YOU VOTE IN THE GENERAL ELECTION
- 3. WE VOTE FOR LEADERS DURING AN \_\_\_\_\_
- 5. A PERSON RUNNING FOR OFFICE
- 7. LEADER OF MAUI COUNTY
- 9. YOU MUST BE THIS AGE TO REGISTER TO VOTE
- 11. A RESPONSIBILITY TO HELP YOUR COMMUNITY



# WHAT IS VOTING?

**VOTING IS WHEN PEOPLE CHOOSE WHAT THEY THINK IS BEST.**

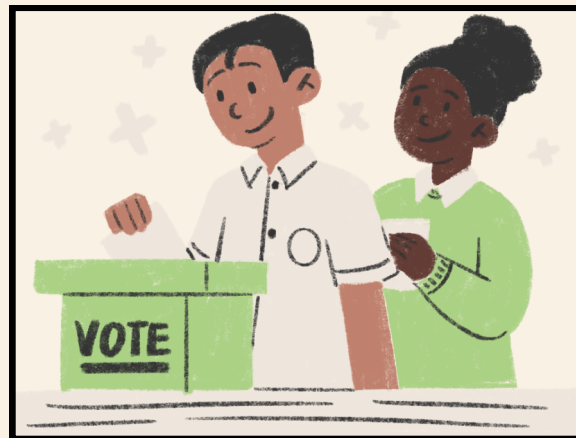
**ADULTS VOTE TO DECIDE:**

- **LEADERS**
- **COMMUNITY RULES**
- **IMPORTANT DECISIONS**

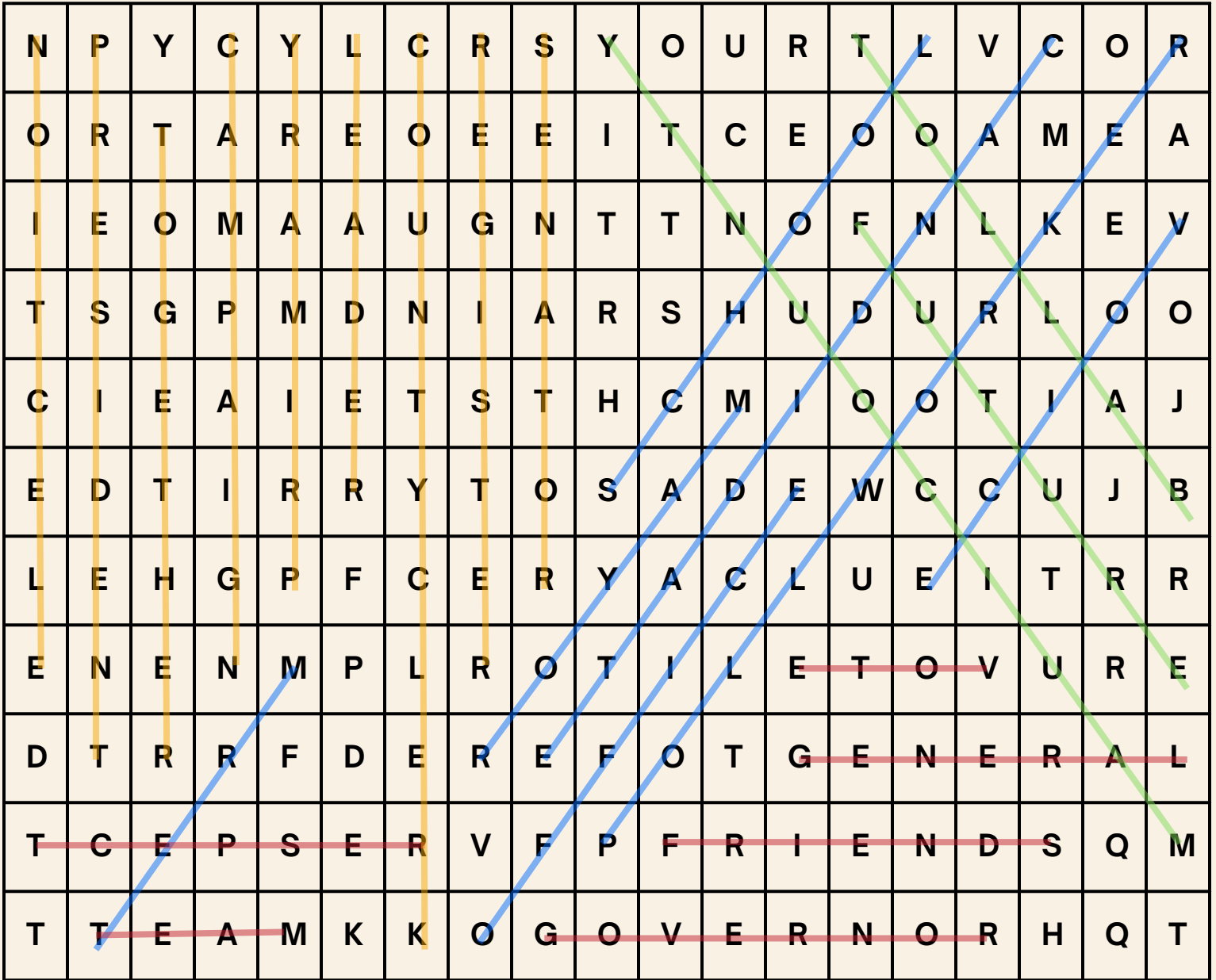
**VOTING HELPS EVERYONE HAVE A VOICE.**

**EVEN THOUGH KIDS CAN'T VOTE YET, YOU ARE FUTURE VOTERS!**

**ACTIVITY: DRAW A CHECKMARK ✓ BELOW THE PICTURE THAT SHOWS VOTING.**



# WORD SEARCH



FIND ALL WORDS IN THE LIST. WORDS CAN GO IN ANY DIRECTION AND SHARE LETTERS AS WELL AS CROSS OVER EACH OTHER.

## WORDS TO FIND

**BALLOT**

**FUTURE**

**LEADER**

**OFFICE**

**PRIMARY**

**SCHOOL**

**TERM**

**VOTE**

**CAMPAIGN**

**ELECTION**

**GENERAL**

**REGISTER**

**SENATOR**

**FRIENDS**

**TOGETHER**

**GOVERNOR**

**MAYOR**

**PRESIDENT**

**RESPECT**

**TEAM**

**VOICE**

**COUNTY CLERK**

**CANDIDATE**

**MAUI COUNTY**

**POLL WORKER**

# FILL-IN-THE-BLANK

FILL IN THE BLANKS USING THE ANSWER KEY BELOW

## ANSWER KEY

LĀNA'I	GOVERNOR	9
CITIZEN	COUNTY CLERK'S OFFICE	16
RESIDENT	VOTER SERVICE	18

1. THE GOVERNOR IS THE TOP LEADER OF THE STATE GOVERNMENT.
2. MAUI COUNTY CONSISTS OF FOUR ISLANDS: MAUI, MOLOKA'I, KAHO'OLAWA, AND LĀNA'I.
3. PEOPLE CAN REGISTER TO VOTE AT THE COUNTY CLERK'S OFFICE OR ONLINE.
4. A PERSON MUST BE 18 ON ELECTION DAY TO VOTE.
5. IN HAWAI'I, MOST PEOPLE VOTE BY MAIL, BUT THEY CAN ALSO VOTE EARLY AT ONE OF THE COUNTY'S VOTER SERVICE CENTERS.
6. THERE ARE 9 MEMBERS OF THE MAUI COUNTY COUNCIL.
7. A PERSON MUST BE A RESIDENT OF THE STATE OF HAWAI'I AND A UNITED STATES CITIZEN TO REGISTER TO VOTE.
8. A PERSON CAN PRE-REGISTER TO VOTE WHEN THEY TURN 16 YEARS OLD.



ANSWER KEY

# ELECTION JUMBLE

UNSCRAMBLE THE WORDS BELOW. ARRANGE THE COLORED LETTERS TO ANSWER THE QUESTION BELOW

T O V R E  
V O T E R

L W A  
L A W

L A T L O B  
B A L L O T

F O F I C E  
O F F I C E

N I T O E L E C  
E L E C T I O N

D I N G A T E A D  
C A N D I D A T E

YOUR VOTE MATTERS

WHAT DOES VOTING GIVE YOU?

A V O I C E



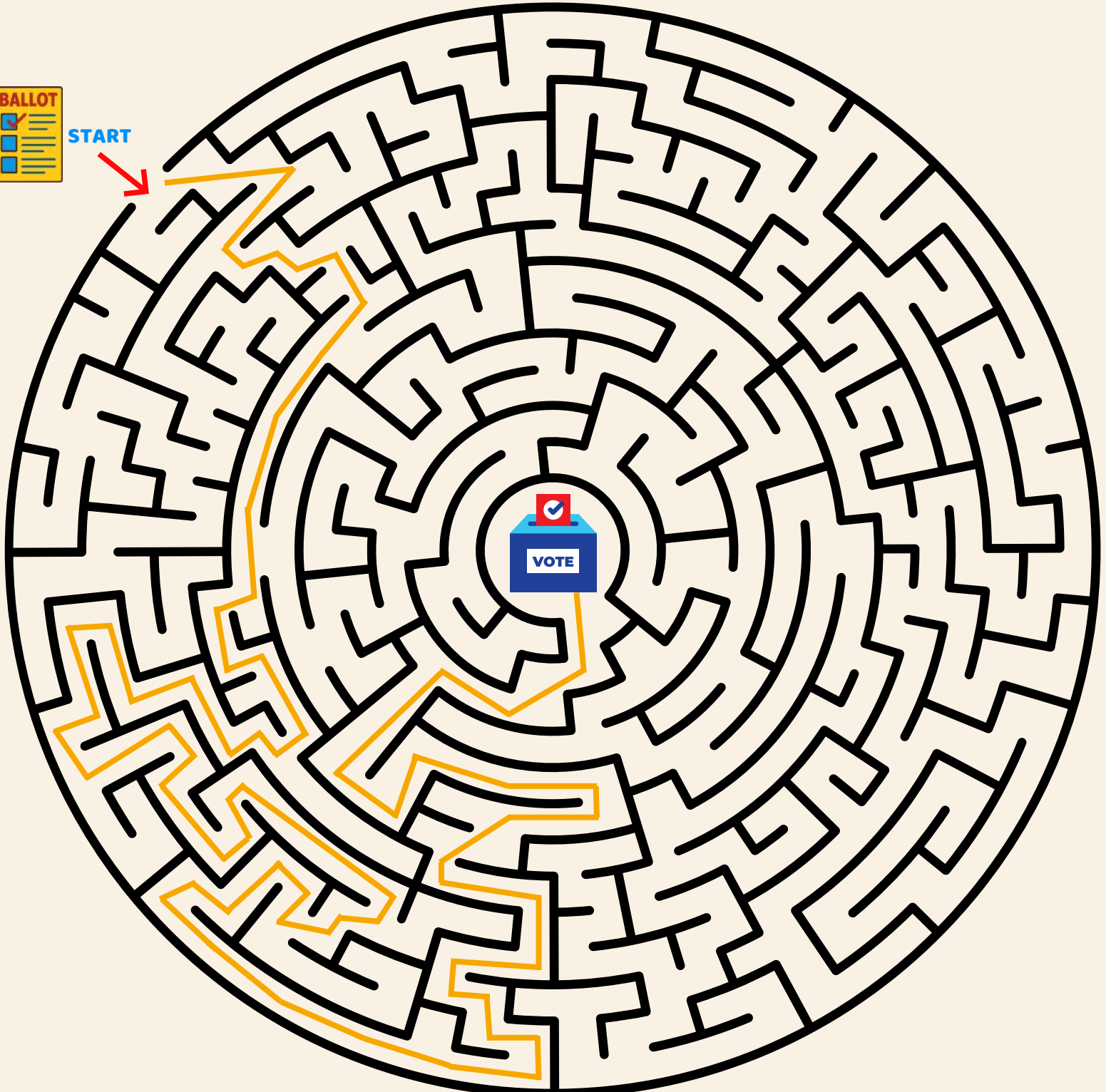
ANSWER KEY

# THE GREAT VOTING MAZE

TAKE YOUR BALLOT TO THE BALLOT BOX

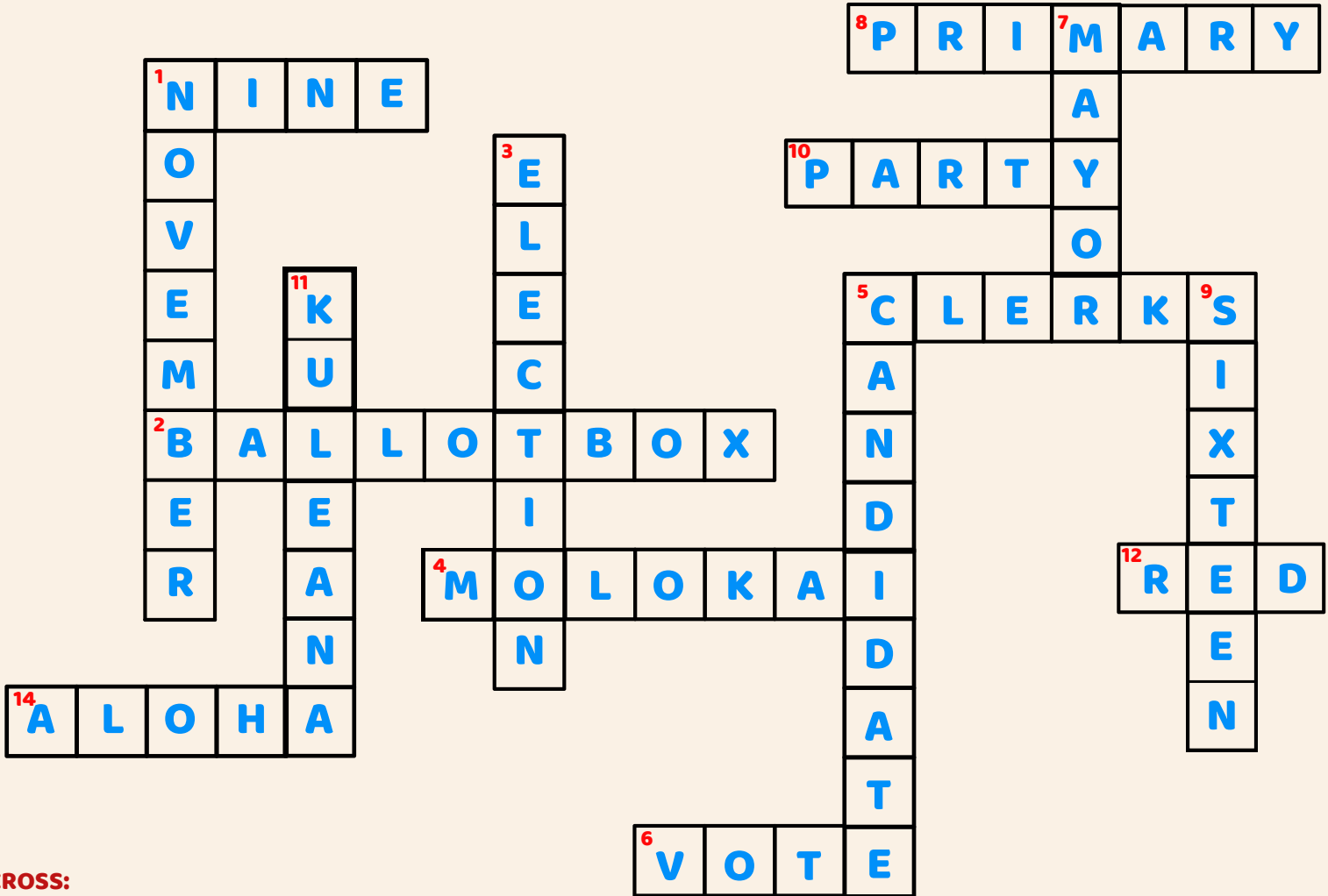


START



# ELECTION CROSSWORD CHALLENGE

CAN YOU SOLVE THE ELECTION CROSSWORD?  
 READ THE CLUES AND FILL IN THE BOXES TO LEARN ABOUT VOTING!



**ACROSS:**

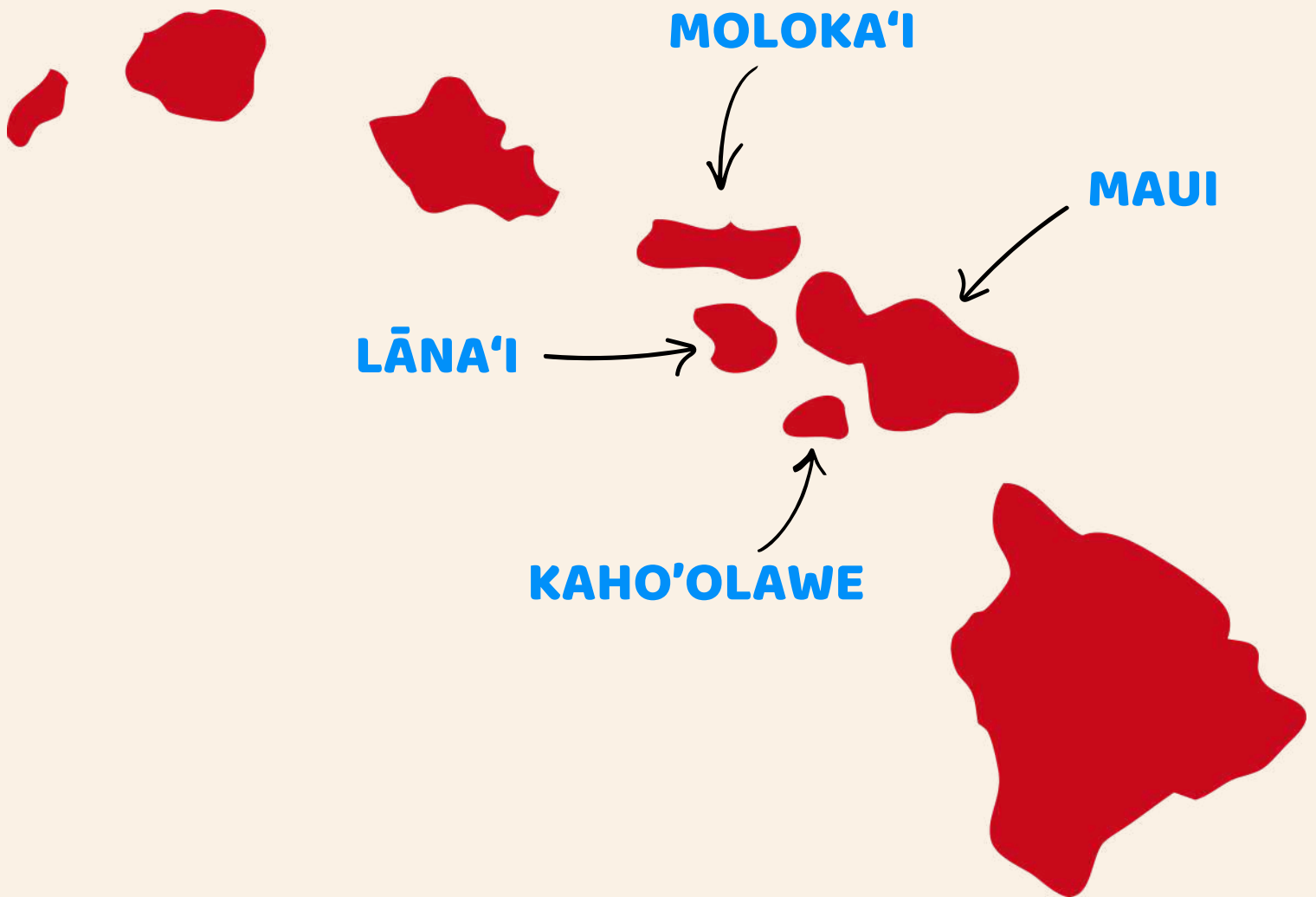
1. NUMBER OF MAUI COUNTY COUNCIL MEMBERS
2. YOU DROP YOUR BALLOT OFF HERE
4. ONE OF THE ISLANDS OF MAUI COUNTY
5. YOU CAN REGISTER TO VOTE ONLINE OR AT THE COUNTY \_\_\_\_\_ OFFICE
6. WHEN YOU TURN 18, YOU CAN \_\_\_\_\_ IN AN ELECTION
8. THIS TYPE OF ELECTION IS HELD IN AUGUST
10. A TEAM IN POLITICS
12. THE HAWAI'I FLAG INCLUDES THIS COLOR
14. VOTE WITH \_\_\_\_\_

**DOWN:**

1. THE MONTH YOU VOTE IN THE GENERAL ELECTION
3. WE VOTE FOR LEADERS DURING AN \_\_\_\_\_
5. A PERSON RUNNING FOR OFFICE
7. LEADER OF MAUI COUNTY
9. YOU MUST BE THIS AGE TO REGISTER TO VOTE
11. A RESPONSIBILITY TO HELP YOUR COMMUNITY



# THE ISLANDS OF MAUI COUNTY



**MAUI COUNTY IS SPECIAL BECAUSE IT IS MADE UP OF FOUR ISLANDS. IT INCLUDES MAUI, MOLOKAʻI, LĀNAʻI, AND KAHOʻOLAWE. EACH ISLAND IS DIFFERENT AND HAS ITS OWN PEOPLE, PLACES, AND STORIES. EVEN THOUGH THEY ARE ALL PART OF THE SAME COUNTY, EACH ISLAND IS UNIQUE AND IMPORTANT IN ITS OWN WAY.**



**MAHALO FOR TAKING THE TIME TO LEARN ABOUT  
THE IMPORTANCE OF VOTING.**

**FOR MORE INFORMATION:**

**OFFICE OF THE COUNTY CLERK  
200 SOUTH HIGH STREET, ROOM 708  
WAILUKU, HI 96793  
(808) 270-7749**

**[HTTPS://MAUICOUNTYVOTES.GOV/](https://mauicountyvotes.gov/)**