



AIMM
KSGW_{LLC}





CONTACT

AIMM-KSGW PARTNERS, LLC
1000 Parkwood Circle Southeast
Atlanta, GA 30339
(770) 619-5913

ABOUT US

AIMM-KSGW Partners, LLC is a design build firm headquartered in Atlanta, GA which provides design and construction services to public and private sector clients. First established in 1979 as AIM Architects and Engineers Consultants, reorganized in 1991 as AIM Partners, PLC, and finally, in 2016 with the formation of AIMM-KSGW Partners, LLC.



The firm has built a reputation for innovative design-build and professional consulting services, cost-effective project delivery and client satisfaction. We are proud to maintain the legacies of two Georgia firms, AIM Partners, PLC and KSGW Architects, LLC, which have successfully merged into a larger operating company maintaining strategic focus on innovation. We have over three decades of successful client relations and a history of outstanding work on projects ranging in size and complexity from \$100K renovations, to \$120M County Justice Complex, from technologically complex critical infrastructure E-911 projects, to \$450M crude oil refinery projects.

We are known for fastidious attention to detail, innovative planning, and effective communication which allows us to excel on all aspects of a project.

Design Build: AIMM-KSGW Partners, LLC offers design build and construction management services locally, and on an international basis through its associate firms. AIMM-KSGW has demonstrated full capacity and expertise in various scopes of engineering, procurement, and construction Works, including water/wastewater, energy, civil-site, mechanical plant retrofit, and building facility renovations and new construction.

Architecture & Planning: Our Architecture and Planning Group offers a full range of architectural, planning, interior design, and computer aided design and support services. We have successfully completed projects in all types of building design, including new construction, additions and modifications, historic building restoration, as well as conversion of existing structures.

Exceeding Clients Expectations: From convention and religious centers to schools and city housing, AIMM-KSGW provides our clients with skill and imagination. With extraordinary talents of a full staff of professionals and over three decades of experiences, we continue to meet and excel in a variety of architectural, building, engineering and construction challenges.





AIMM-KSGW believes that designing a facility with lasting quality, optimum efficiency and low maintenance cost demands close the interface between our organization and our client's. We are attentive, flexible, easy to work with and down-to-earth. By listening and responding to our clients' concerns and enhancing their good ideas, we consistently achieve results that not only satisfy exacting needs, budgets, and schedules, but also exceed expectations.

Quality Control: Since 80% of project costs are committed during the first 20% of design, initial decisions are critical. AIMM-KSGW's skill in estimating project costs enables us to contain construction expenses in each project phase. In our history of over three decades, we have never had a project that failed to bid within the allowable budgetary boundaries!

Schedule Control: Our design team confers with its clients to develop critical milestone and completion dates, so that project designs are developed on time. Our experienced design build team is committed to providing the flexibility to pro-actively resolve issues quickly and effectively as they arise.

CAD/BIM : AIMM-KSGW Partners, LLC is an industry leader in the use of computer aided design and drafting systems in the development of construction documents. Our Technology Solutions Group offers GIS and BIM services to both US and international clientele. We are able to produce large projects on short design schedules because of our highly skilled use and understanding of Information Technology. We are committed to the use of the most advanced technologies, providing design-build services at the highest quality and most affordable levels to our clients.

Currently, AIMM-KSGW is not offering engineering consulting services in the State of Georgia but often teams with local best-in class engineering firms to offer full design build services. We are prepared to respond promptly to any needs, with expert design and management staff as needed. We have successfully completed projects for various public and private sector clients in various engineering and construction projects. Our international practice includes all disciplines of Engineering, Procurement and Construction.



EXPERIENCE

Civil Engineering:

- Site planning
- Water facilities
- Wastewater system analysis & design
- Storm water management
- Erosion & sediment control plans
- Roadway & parking lot design
- Traffic impact studies
- Subdivision design
- Flood plain studies
- Drainage systems evaluation & design
- Surveys & stake-outs
-

Structural Engineering:

- Barrier-free design
- Foundation design
- steel/concrete/masonry/wood structures
- existing structural analysis
- inspections/evaluations
- Insurance investigation
- Testimony

Mechanical Engineering:

- Plumbing
- HVAC
- Fire protection
- Air quality
- Energy conservation
- Feasibility studies
- Inspections/evaluations
- Insurance reports
- Expert testimony

Electrical Engineering:

- Electrical code review
- Power generation and distribution
- motor control
- lighting energy studies
- programmable logic controls
- uninterruptible power systems (UPS)
- utilities usage & analysis
- fire detection/alarm design
- security system design
- inspections/evaluations
- insurance reports/expert testimony
- energy conservation

HISTORY

KSGW Architects was initially formed in 1993 by Karen Sicner as Sicner Planning & Design, Inc as a full-service planning, architecture, interiors and environmental graphic design firm. It was reorganized in 2002 as KSGW Architects, adding an additional partner, Gregory Washington. The firm operated with two goals in mind. 1. Client's goals come first - not profit margins, nor design statements. 2. The Principals, the most experienced staff, always lead projects. In 2014, after 21 years of successful practice, KSGW was reorganized with Gregory Washington as the sole managing partner.

Over the course of two decades the firm developed a long-standing reputation for planning and design excellence and outstanding client service. The buildings resulting from our careful planning are sensitive, livable, workable, durable, and contextual. We are experts in providing planning and needs assessment and we understand the importance and relationship of function and form in the between the planning exercise and that of their direct impact on master planning, building design, space allocation, function, building cost and operating cost, as well as on aesthetics, time and schedule.

AIMM's founding father, Mr. Kevork "George" Balian, AIA trained as an architect at Auburn University in Alabama upon immigrating to the United States. He began his practice of architecture as Balian and Associates, Inc. in Macon Georgia in 1970 but supported his young family by selling his water-color paintings, while promoting his desire to design buildings that would capture his artistic talent and scientific training. It didn't take long for his talent to become noticed and appreciated by the local public and private sector clients in Macon, Georgia. In 1979, he envisioned an international practice and co-founded AIM Architects & Engineers Consultants, Inc to compete for international projects funded by the United State Agency for International Development (USAID), World Bank, Kuwaiti Fund, and other multilateral funding agencies. His break came shortly thereafter, when AIM successfully won an international design competition for the Kuwaiti-funded Abuja National Mosque, and shortly thereafter, the Economic Community of West African Secretariat, both in Abuja, Nigeria. From then on, he and his Nigerian partners developed a strong presence in Nigeria as AIM Consultants, Ltd

In 1991, the McMeadoy Group Ltd. acquired controlling interest in the U.S. business and reorganized into AIM Partners PLC, with Mr. Nony Mbaezue as CEO & Principal Engineer, and added infrastructure design and construction management to its professional services. For another 25 years, AIM Partners, PLC continued providing architecture, engineering and construction services to an international clientele that include: Delta Airlines, New Orleans Aviation Board; Young International Development Corporation, Inc.; Nigeria Diplomatic Mission, New York; Orient Petroleum & Petrochemicals Corporation; City of Atlanta; Fulton County; Bibb County Public Schools; City of Macon; Board of Regents of the University System of Georgia; City of Birmingham; Alabama; etc..

Upon friendly merger and reorganization into AIMM-KSGW Partners, LLC in 2016, Gregory Washington continues to lead the firm's professional architecture practice on a variety of building types. Hence, although Mr. Kevork 'George' Balian passed on to greater glory in November 2013, his vision and legacy of talented architectural design and dedicated client service has continued in the successor firm, AIMM-KSGW, as we continue the long history of professional services in design-build, architecture, and interior design services.

KEY STAFF

Nony E. Mbaezue, AIC, CCPM
Gregory D. Washington, AIA, NCARB
Eric Pettingill, NCARB
Ara Kefer, AIA Emeritus
Curtis Dumas, P.E.

Senior Associates:
Robert Balian, AIA, NCARB
Jill Nobles, AIA
Nebil Sedki, P.E.

OUR WORK

AIMM-KSGW Partners, LLC provides a wide spectrum of professional skills and services. We understand that our clients have goals and objectives that drive their businesses, and to meet these goals, the client must make investment decisions wisely. Our mission is to partner with each client and assist them to effectively meet their goals.

We take the time to understand each client's issues and priorities, we then work with the client to ensure that the precise solution is delivered. Our methodology ensures success! AIM's professional service excellence is reflected in the repeat business it enjoys with most of its clients.

Our Architecture and Planning Group offers a full range of architectural, planning, and interior design services. AIMM-KSGW implements an integrated design approach that emphasizes the following:

Each client is a key project team member:

- All projects are designed with sustainable/high performance criteria
- A Firm Principal serves as the project manager on all projects and is involved in each project on a day-to-day basis.
- We utilize the most current Building Information Modeling software to simplify the design process and allow for multiple disciplines to simultaneously work together.
- We have successfully demonstrated our ability to stretch our clients' facility dollars as far as they will go without sacrificing quality.

We offer the following services:

- Needs Assessments
- Facility Evaluations
- Programming
- Bridging Documents
- Full Service A/E Design
- Construction Phase Services
- Interior Design
- Environmental Graphics
- Project Scheduling
- Cost Estimating
- Landscape Design
- Master Planning
- Construction Project Management
- Cost Engineering

CLIENT LIST

- Georgia State University
- Richmond County, Georgia Board of Education
- Albany State University, Albany Georgia
- Georgia Health Sciences University
- Bibb County, Georgia Board of Education
- Clayton County, Georgia
- Cobb County, Georgia Sheriff's Office
- Douglas County, Georgia Sheriff's Office
- Federal Bureau of Prisons, Southeast Region
- The GEO Group, Inc.
- Georgia Building Authority
- Richmond County, Georgia Sheriff's Office
- U.S. Army Corps of Engineers, Savannah District
- Georgia Department of Natural Resources
- City of Atlanta, Georgia
- Tecon-Nigerstar, Nigeria Ltd.
- Federal Government of Nigeria
- Lagos State Government, Nigeria
- Anambra State Government, Nigeria
- Fulton County Government, GA
- Delta Airlines
- New Orleans Aviation Board
- Young International Development Corporation, Inc.
- Nigerian Diplomatic Mission New York, NY
- Orient Petroleum & Petrochemicals Corporation





OUR EXPERTISE

Maintaining a strategic focus on innovation, we have over three decades of successful client relations and a history of outstanding work -- on projects ranging in size and complexity from \$100K renovations, to \$120M County Justice Complex, from technologically complex critical infrastructure projects, to \$450M crude oil refinery projects.

EDUCATION



JUSTICE



MASTER PLANNING

RESIDENTIAL



INTERIORS



INFRASTRUCTURE



EDUCATION

AIMM-KSGW Partners has earned a reputation as being a leader in creative thinking. We are well-practiced in school planning for new construction as well as renovations and additions to existing facilities – K-12 and Higher Education. We are well known for our ability to work within very constrained budgets that are challenged. By overcoming the challenges of school renovations and replacements in neighborhoods that are in lower socioeconomic environments (school buildings that have been severely neglected over time and have reduced maintenance budgets, not to mention user and neighborhood abuse), we have garnered much commendation. Our designs have been embraced by superintendents and school boards for being uplifting to the community which they serve and for adding significant value to the portfolio of buildings that the school board protects. The communities that have great interest in the planning and design of our buildings have championed these buildings as beautiful, serviceable and expertly crafted environments that allow for creativity and learning.

CLIENT LIST

- GA State University School of Education Renovations, Atlanta, GA
- Early Learning Center at Albany State University, Albany, GA
- Copeland Elementary School Addition and Renovations, Augusta, GA
- Meadowbrook Elementary School Renovations, Augusta, GA
- Southside Elementary School Renovations, Augusta, GA
- Ingram Pye Elementary School Renovations, Macon GA
- Freedom Park School at Fort Gordon Additions and Renovations, Augusta, GA
- Hephzibah High School Renovations, Hephzibah, GA
- Legal Relocation, Georgia Health Sciences University, Augusta, GA
- Richmond County School Bus Maintenance Facility Renovations, Augusta, GA
- Student Center Addition Program, Albany State University, Albany, GA
- Spirit Creek Middle School Re-Roof, Augusta, GA
- Sego Middle School Re-Roof, Augusta, GA
- Miller Middle School, Bibb County, GA
- Student Center Addition at Kennesaw State University, Kennesaw, GA
- Joseph S. Clark Elementary School Renovations, New Orleans, LA



"His passion for good architectural design along with his resourcefulness led to what many say is the most beautiful elementary school in the Bibb County District"

-Brenda M. Stokes, LEED AP, Bibb County School District



Building of America
Gold Medal Award 2010

INGRAM PYE ELEMENTARY SCHOOL RENOVATIONS AND ADDITIONS

- MACON, GA - BIBB COUNTY

\$7.95M

A somewhat traditional building that was reflective of a "Country Day School" with internally modern attributes. 48,150 sf renovation and new administration, general classrooms, laboratories, cafeteria, main entrance lobby and general use corridors were all design to take advantage of sustainable criteria and re-purposing of demolished concrete, masonry materials, and recyclable building materials. The school was designed to be one of three landmark buildings to serve as a gateway to the city of Macon.





CLASSROOM ADDITION, PAULDING
COUNTY RYDC
- DALLAS, GEORGIA

\$880K

6,500 square foot classroom addition designed to serve children ages 12 to 18, including students with special needs. Includes 5 classrooms, two outdoor classrooms, and one open meeting area.

Design objective to include natural daylight, creative use of finishes to achieve durability and security creating a welcoming environment for learning.



COPELAND ELEMENTARY SCHOOL
RENOVATIONS AND ADDITION
- AUGUSTA, GA - RICHMOND COUNTY

\$5.0M

15,000 gsf total renovation and addition to the original 1950's media center, guidance, and administration areas using sustainable design criteria. New high bay clerestory windows allowing for an abundance of natural light coupled with updated finishes and modern technologies. All to create modern and comfortable spaces to encourage growth and learning.





EARLY LEARNING CENTER AT ALBANY STATE
UNIVERSITY
- ALBANY, GA - DOUGHERTY, COUNTY

\$1.95M

9,150 gsf new construction with the design objective center around high performance design, natural daylight, creative and ecological finishes to achieve durability, security, and environmentally friendly, fun, and child-centric spaces for learning. Intended to provide student teaching opportunities for University Students enrolled in the University's Early Childhood Education program. The building will provide day care for university employees, students, and members of the community for children ages 1 to 5 with after school programs. 3 - toddler classrooms, covered outdoor play area, fenced outdoor play area, large multi-purpose classroom/ gather space, and offices for faculty.



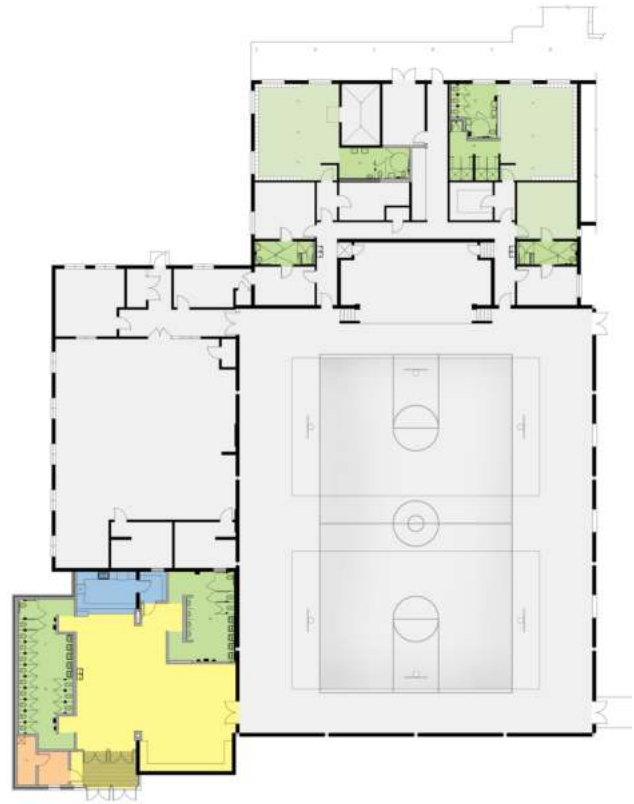


FREEDOM PARK MIDDLE SCHOOL
- FORT GORDON
AUGUSTA, GA - RICHMOND, COUNTY

\$4.6M

31,700 square feet middle school and gymnasium addition. The project required the design time to provide the necessary spaces and function in an existing elementary school. The new building consisted of the addition of 10 middle school classrooms, administrative spaces, a middle school size gymnasium with locker rooms, concessions and a new parent drop off area.





HEPHZIBAH HIGH SCHOOL AUGUSTA, GA - RICHMOND, COUNTY

\$2.3M

The addition to Hepzibah High School included a new Lobby with Public toilets to serve the existing gymnasium, as well as upgrades to the existing locker rooms. The new lobby provides display space for athletic trophies, a ticket booth and a concession stand.

Existing showers and toilets were modified in order to provide handicapped accessible fixtures and to provide more durable finishes resistant to mold and abuse. The existing gymnasium floor was refinished and additional insulation was added to the roof, and the mechanical systems and lighting were upgraded to more energy efficient systems.



MILLER MIDDLE SCHOOL - MACON, GA - BIBB, COUNTY

\$7M

Design for a new Middle School for 750 students includes: 24 general classrooms; 8 science labs; 2 team planning classrooms; art and music technology labs; media center; home economics lab; cafetorium; administrative wings and renovation of the existing gymnasium. The master plan and arrangement of the classroom wings allows for future expansion. Full Service A/E, Interiors



JOSEPH S. CLARK ELEMENTARY SCHOOL RENOVATION - MACON, GA - BIBB, COUNTY

\$6.5M

This project consisted of the complete renovation/ conversion of an existing high school into an elementary school. The project included 4 K-3 classrooms, 18 elementary classrooms, music laboratory, library/media center, and administration wing, cafeteria, and support areas. The existing roof and truss structures which were damaged during a fire were replaced.



STUDENT CENTER ADDITION AT
KENNESAW STATE UNIVERSITY
- MACON, GA - BIBB, COUNTY

\$7M

This 2-story addition to an existing Student Center which now serves as the center of student activities at the University. The exterior is brick to match the existing facility, separated by a glass curtain wall. The entry rotunda and the barrel vault over the 3-story interior atrium serve as the focal point of the building.



JUSTICE & PUBLIC SAFETY

KSGW Architects is a 23-year old, minority owned firm specializing in Justice Architecture and has a thorough understanding of the architectural and engineering components necessary for the successful design of detention centers, governmental administration buildings and other justice facilities. KSGW has a consistent ability to achieve design excellence on complex projects while meeting demanding budget and schedule requirements.

CLIENT LIST

- Clayton County Youth Development and Justice Center, Jonesboro, GA
- Riverbend Correctional Facility, Milledgeville, GA
- Paulding County Regional Youth Development Center School Addition, Dallas, GA
- Cobb County Adult Detention Center, Marietta, GA
- Douglas County Justice Complex, Master Plan, Douglasville, GA
- Webster Detention Center, Augusta, GA
- Georgia Department of Juvenile Justice RYDC Upgrades at Six Sites, State of GA
- Toronto South Detention Center (unbuilt), Toronto, Ontario
- Augusta Cottage Renovations, Youth Development Center, Augusta, GA
- Douglas County Justice Complex Master Plan, Douglasville, GA
- Macon RYDC Balcony Renovations, Macon, GA
- D.Ray James Administration Building, Folkston, GA
- D.Ray James Marshals Expansion, Folkston, GA
- USP ATL Pump House, Atlanta, GA
- Fulton County Jail Renovation, Fulton County, GA
- Police Safety Annex Building for the City of Atlanta, Ga
- Georgia Public Safety Training Facilities, Forsyth, GA
- Drug Court Renovation, Jefferson Place, Fulton County Department of Buildings
- Homeless Shelter Renovation, Jefferson Place, Fulton County Department of General Services



CLAYTON COUNTY YOUTH
DEVELOPMENT AND JUVENILE
JUSTICE CENTER
- JONESBORO, GA - CLAYTON, COUNTY

\$15M

65,000 gsf new construction. In order to mitigate stress and anxiety, considerable attention has been given to sustainable design strategies. The finishes have been kept minimal and soothing - an idea that allows the building form to stand alone and serve as a work of art. The forms are development to maximize access to natural, calming daylight and present views to the outside.





RIVERBEND CORRECTIONAL FACILITY - MILLEDGEVILLE, GA - BALDWIN, COUNTY

\$68.8M

291,000 gsf new construction facility providing housing for 1500 inmates for the state of GA and is planned and constructed to add an additional 500 beds. The design meets LEED silver criteria. Program consists of intake/processing, outdoor rec and walking trail, soccer field and basketball courts, dormitory and cell housing, administrative offices, dining and food service buildings, laundry, medical infirmary and clinic, and indoor and outdoor visiting.

"On numerous occasions we have worked with KSGW on fast-track design/build and CM-at-Risk projects. They have always proven to organize their workforce to meet our schedule and the principals have always been one-hundred percent available in leading the design."

*-Douglas C. Davidson, President, CEO
New South Construction*



CHARLES B. WEBSTER DETENTION CENTER - AUGUSTA, GA - RICHMOND, COUNTY

\$34.5M

110,000 gsf new construction as part of a long-term strategy for Richmond County, we developed a master plan to accommodate for the inmate growth and consolidation needs at the current Webster Detention Center site. Program includes new 2-tier, 184-bed male housing pod, new 2-tier, 144-bed female housing pod, new 152-bed medical/mental health housing pod with health clinic, 100 video visitation stations wired to all housing pods, new security systems and controls to the new and existing housing pods, and renovation/remodel of existing kitchen, laundry, dining, and administration.

"KSGW was detailed, professional and enjoyable to work with. They utilized creative solutions that saved Augusta-Richmond County money, yet still designed a facility that is functional, aesthetically pleasing, and energy efficient"
-Geri Sams, Director



COBB COUNTY ADULT DETENTION CENTER - MARIETTA, GA - COBB, COUNTY

\$93.9M

325,987 gsf addition to the existing detention center consisting primarily of a 1,172 bed addition, new intake and transport area, new video visitation center, new staff lockers, and administration areas, and renovations at the existing medical and mental areas, kitchen laundry and staff support and jail.



"Design on the \$110 million Cobb County Detention Center expansion began in the fall of 2006...and 38 months later we are ready to occupy. Without the design team's outstanding project management, organization, and ability to work closely with our program management and construction team we could not have achieved this fast and difficult schedule."

*Colonel Don Bartlett
Cobb County Sheriff's Office*



FULTON COUNTY JAIL RENOVATION - ATLANTA, GA

\$54M

The existing Fulton County Jail is a 14 level 340,000 sf facility housing one of the largest jail populations in the US with more than 3,000 inmates. The existing facility built in 1987 was having significant water infiltration through the existing walls and roof and needed a security and fire alarm system upgrade. Project design included replacement of the existing PVC roof with an EPDM 20-year roof. Exterior wall modifications included installation of new control joints, application of silicone extrusion strips and application of elastomeric coating. The security and alarm systems upgrade had to be carried out in phases due to overcrowding of the inmate cell areas. Subsequently, design service was rendered to support retro-commissioning of the building MEP and plant facilities. All interior and exterior work was scheduled so that there was no interruption of inmate activities.





PUBLIC SAFETY HQ COMPLEX - ATLANTA, GA

\$62M

Needs assessment and financial feasibility study, master planning, programming, bridging documents, and QA/QC services for this state-of-the art headquarters building. The building houses the Atlanta Police and the Fire Rescue Departments, including a state-of-the-art emergency Command Center. It is located on a challenging site in downtown Atlanta, requiring specialized traffic and hydrologic studies and design. The site plan and civil/site design also account for an elevated parking structure and a tunnel to City Courts and City Hall offices. Completed planning, selective demolition of existing court building on the site, new facilities programming, preliminary design – Bridging Documents, design/build bidding services, and construction administration.



FIRE STATION #13, #11, and #28 - ATLANTA, GEORGIA

\$23M

Although each station was designed and developed separately, the buildings are part of a single contract for the design and construction of three new fire stations within the City of Atlanta. Each is designed for a fifty-year service cycle.

#13 is 10,000 GSF two-bay fire station housing a ten-person crew. The energy efficient building is LEED-silver certified and include water retention chambers that will allow the fire fighters to wash their vehicles using rainwater instead of treated municipal water. The building plan is laid out so the distance from living quarters to the fire apparatus is short and direct, reducing response time to a minimum.



FIRE STATION #28 - ATLANTA, GEORGIA

#28 is a one-story, 12,650 SF structure that houses Fire Station #28, Police Substation, Community Conference Room and Clock Tower. The Fire Station includes two truck-bays, a ten-bunk dormitory, living quarters with kitchen, bathrooms, exercise room, shop, decontamination room, laundry room, office, storage and mechanical room. The Police Substation includes a reception area and offices and the Community Room is comprised of a 1,600 SF conference room with rest room facilities. Exterior entail brick and concrete masonry load-bearing walls, steel bar joists and beams, metal deck and metal roof. Interior finishes include concrete masonry, ceramic tile floor, six-foot wainscot, stain-finished concrete floors, acoustical ceiling tile and ceiling fans.



PUBLIC SAFETY ANNEX - ATLANTA, GEORGIA

\$21.5M

96,000 GSF 3-story new construction office building attached to an existing 105,600 sf warehouse plus tenant improvements for the Atlanta Police Department Property Control, evidence storage, central records, identification, fleet management, logistical support, auto theft task force, along with the Atlanta fire and rescue administrative service, property, and arson units.

The site consists of approximately 10.4 acres and Works included the demolition of an existing 17,000 sf single story office building to allow for the addition of new 3-story building, with a state-of-the-art crime lab on the third floor. The site was modified as necessary to facilitate underground storm water detention, and also modified to allow for maximum feasible parking on the site.





OTHER PUBLIC SAFETY PLANNING AND IMPLEMENTATION -ATLANTA, GA

PUBLIC SAFETY MASTER PLAN AND IMPLEMENTATION - ATLANTA, GEORGIA

\$1.1M E911 (PSAP) Facility Improvement
\$21M 800 Mhz Re-Banding Implementation
\$41M Public Safety Radio System Design and Installation



All three projects required a CPM master schedule and individual project schedules, close coordination and interface with City user agencies, technology vendors, and Federal Communications Commission agencies.





MASTER PLANNING

Over the course of three decades, we have developed a reputation for planning, design excellence and supportive client service. The buildings that result from our careful planning are sensitive, livable, workable, durable, and contextual. We are experts in providing planning and needs assessment for the markets we serve, and we understand the function, importance and relationship between the planning exercise and that of its direct impact. This is what determines long-term master planning, building design, space allocation, form and function, building cost, as well as aesthetics, time and schedule.









TORONTO SOUTH DETENTION CENTER - TORONTO, ONTARIO

\$300M (proposal)

890,000 gsf new construction designed to be a medium-security correctional facility for adult male inmates containing 2,000-beds comprised of general population, special needs, infirmary and segregation. Our team designed a plan that meets the current capacity needs and is flexible enough to meet future capacity needs. The foundation of the design was based on the following guiding principles: improve safety and security, enhance control and lines of sight, simplify and create a logical flow through the building, provide more operation flexibility. Despite the limited area of the overall site, the adaptable, rectilinear shape of the high rise, housing unit design allows for the addition of two 4-7 story housing towers.

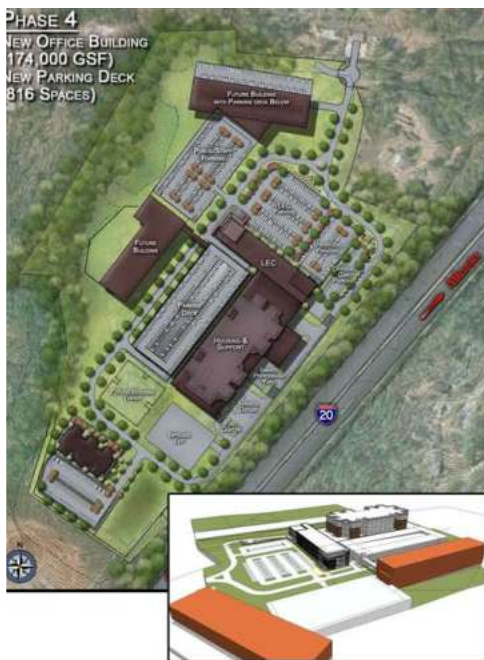


TECON-NIGERSTAR ENERGY PARK (TENEP) - NIGERIA

\$150M (proposed)

Tecon-Nigerstar Energy Park is an industry operator's response to a long-standing dearth of adequate, modern industrial park facilities for energy companies in the Niger Delta Region. The vision of the promoter entails provision of modern facilities that are energy efficient, environmentally responsible, and cost competitive. The vision fosters a campus environment that caters to local and multi-national operators and provides the additional advantage of industrial cooperation, technical education, and cultural exchange





DOUGLAS COUNTY ADULT DETENTION CENTER & LAW ENFORCEMENT CENTER - DOUGLASVILLE, GA - DOUGLAS, COUNTY

\$120.0M (proposed)

540,000 gsf planning for a new adult detention center and law enforcement complex as a replacement to the existing facilities. In a 4 phase program and master plan KSGW developed detailed assessments of the county's near and long term needs, developed detailed architectural programming for the near term facilities, develop capital cost budget models, develop operational budget models and staffing analysis, and develop a preliminary physical design for use in visualizing the planned development.



RESIDENTIAL & INTERIORS

"KSGW demonstrated a unique ability to translate our operational function into a beautiful architectural form that surpassed our expectations, despite a very tight project budget. Their attention to detail and customer service is exceptional. They are true professionals, and it was a pleasure working with them on our juvenile court facility. I highly recommend the team."

-Colin Slay, Chief of Staff, Clayton County Juvenile Courts







KRONE RESIDENCE - ROSWELL, GEORGIA

\$1M

8,000 GSF new construction french modern showcase. This home is a hybrid modern showcase situated on the foundations of a former structure. Constrained by a tight budget and existing site component restrictions. The constrained budget allowed for unique challenges in meeting the owners design requirements using common building materials. Special attention was paid to providing clean, simple, cozy spaces.





GA STATE UNIVERSITY COLLEGE OF EDUCATION - ATLANTA, GEORGIA

\$1M

8,000 GSF new construction french modern showcase. This home is a hybrid modern showcase situated on the foundations of a former structure. Constrained by a tight budget and existing site component restrictions. The constrained budget allowed for unique challenges in meeting the owners design requirements using common building materials. Special attention was paid to providing clean, simple, cozy spaces.





KOBlick RESIDENCE - ROSWELL, GEORGIA

\$5M

14,000 GSF new construction modern showcase. The front entry faces the street with sensitivity to the language and proportions of the adjacent homes. The building was to compliment, reflect, and not interrupt the surrounding natural beauty of a wetland preserve. All exterior glazing elements are double-insulated commercial-grade storefront and curtain wall. All materials require zero long-term maintenance. They include color integrated stucco, natural stones, metal panel, and integrally colored site paving. The entire site is xeriscaped and a stunning bio-retention area offers a beautiful garden experience while functioning as a natural water filtration area.

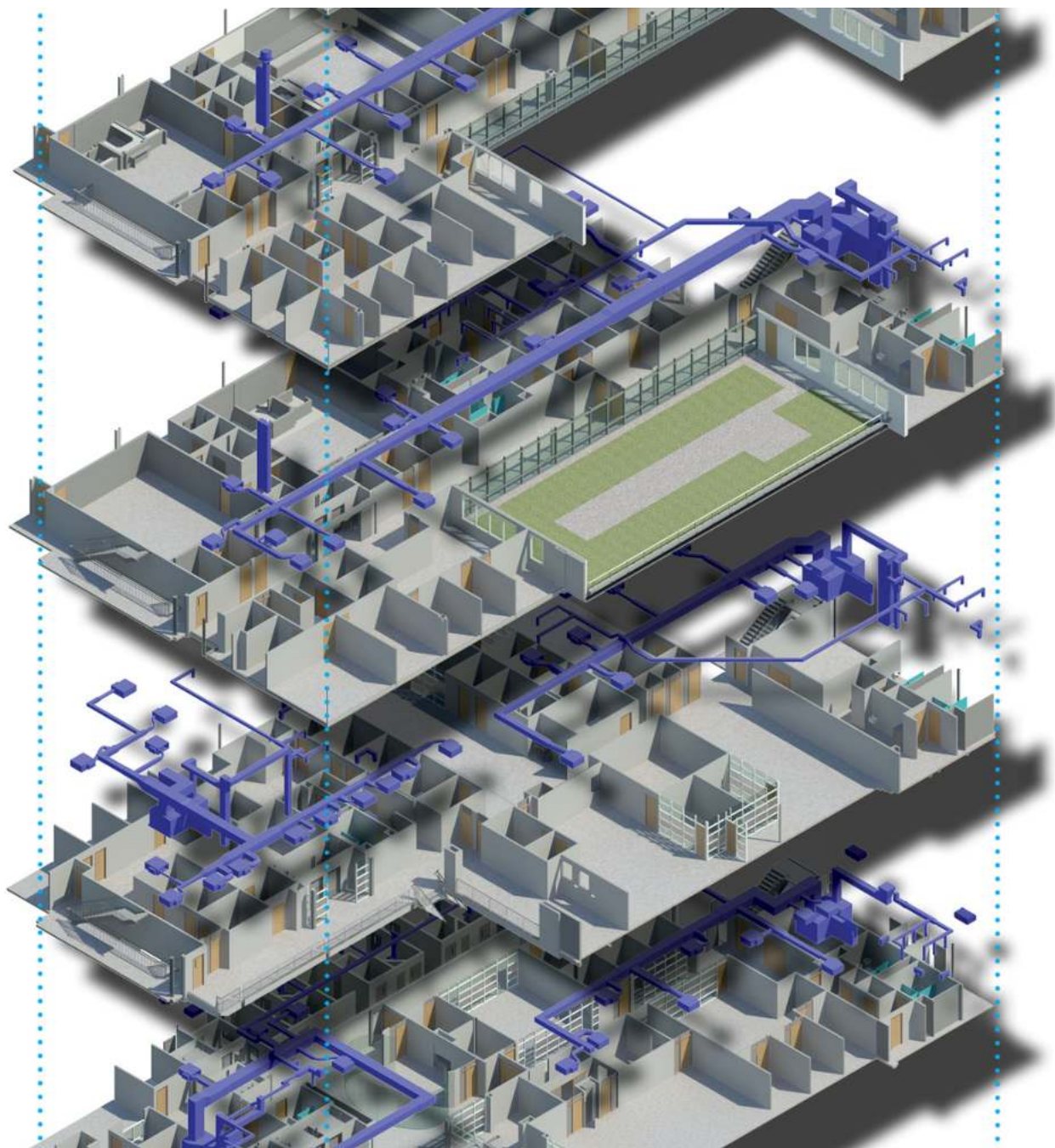




RICHMOND COUNTY BUS MAINTENANCE FACILITY - AUGUSTA, GA

\$1.0M

39,500 gsf renovation to include large assembly and meeting areas, rest room additions and updates, professional modern office spaces, locker rooms for maintenance and driver personnel, and an expansion of the school bus maintenance workshop, warehouse and parts area.







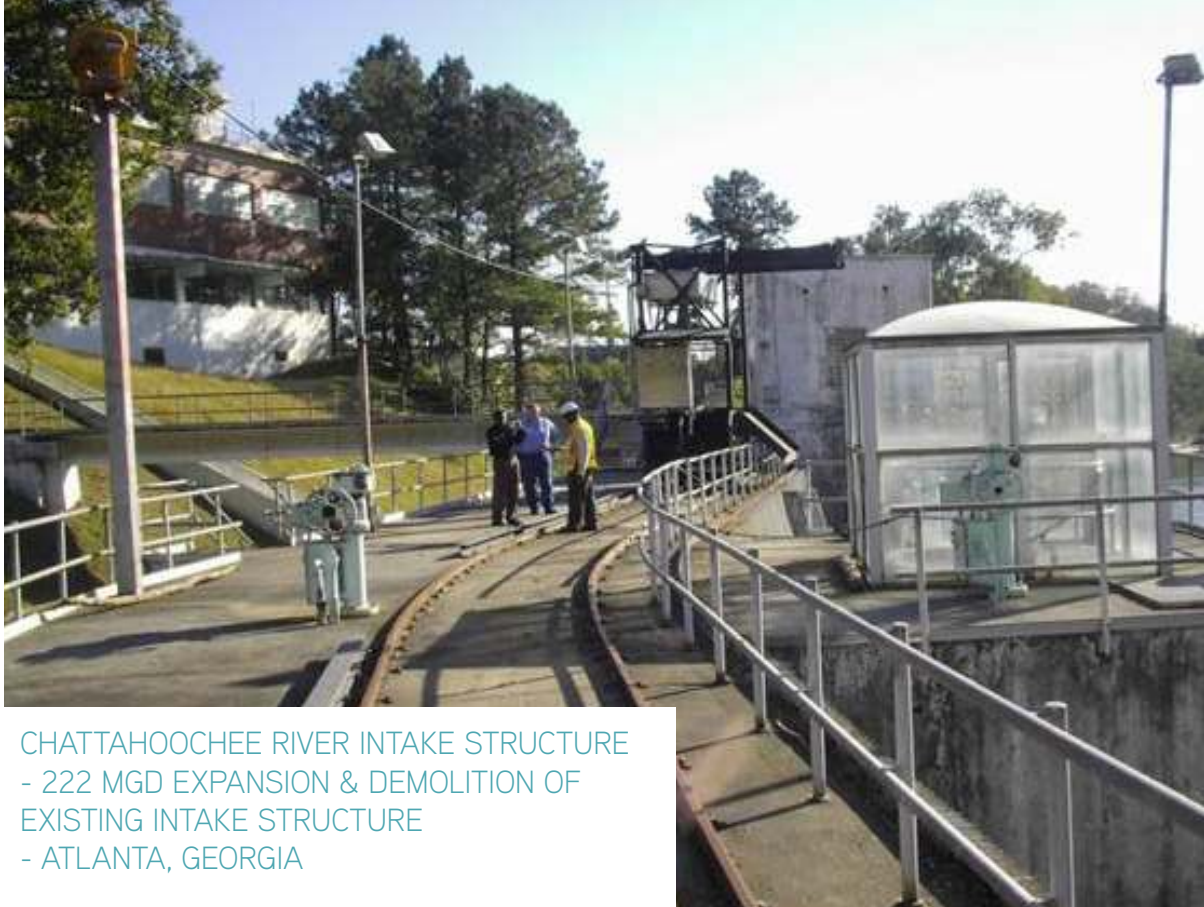
INFRASTRUCTURE

AIMM-KSGW has over two decades of experience in design and construction of water, wastewater, energy, and industrial facilities, both locally and overseas. With specialties in water/wastewater, transportation, aviation, energy & process engineering, we provide

- Feasibility and Planning
- Detailed Engineering
- Project management
- Construction Management
- Operation & Maintenance Assistance

CLIENT LIST

- Fulton County
 - City of Atlanta
 - Exxon-Mobil
 - U.S. Army Corps of Engineers
 - Hartsfield-Jackson Atlanta International Airport
 - Federal Capital Development Authority, Nigeria
 - New Orleans Aviation Board
 - Various State and Local Governments, local and overseas
- 
- 



CHATTAHOOCHEE RIVER INTAKE STRUCTURE
 - 222 MGD EXPANSION & DEMOLITION OF
 EXISTING INTAKE STRUCTURE
 - ATLANTA, GEORGIA

\$11M

Raw Water Intake Structure and Pumping Station & Upgrade,
 including design for selective demolition of existing structures.

- Engineering Study
- Modeling of River Basin
- Technical Memorandum
- Detailed Engineering
- Construction Documents
- Permitting
- Cost Estimating





HEMPHILL SOUTH 54" WATER TRANSMISSION MAIN - 14.2 MILES THROUGH CITY CENTERS, ROADS, ELEVATED HIGHWAYS, RAILROADS, AND CREEKS
- ATLANTA, GEORGIA

\$150M

14.2 Mile Water Transmission Main Pipeline from 14th St in Midtown Atlanta to the Hartsfield-Jackson Atlanta International Airport, traversing many NPU's Interstate Highways, and State roads.

- Route Option Study
- Engineering Study
- Alignment Reports
- Detailed Engineering
- Utility Coordination
- Construction Documents
- Permitting
- Cost Estimating

