



# ADMINISTRATION COMPLEX

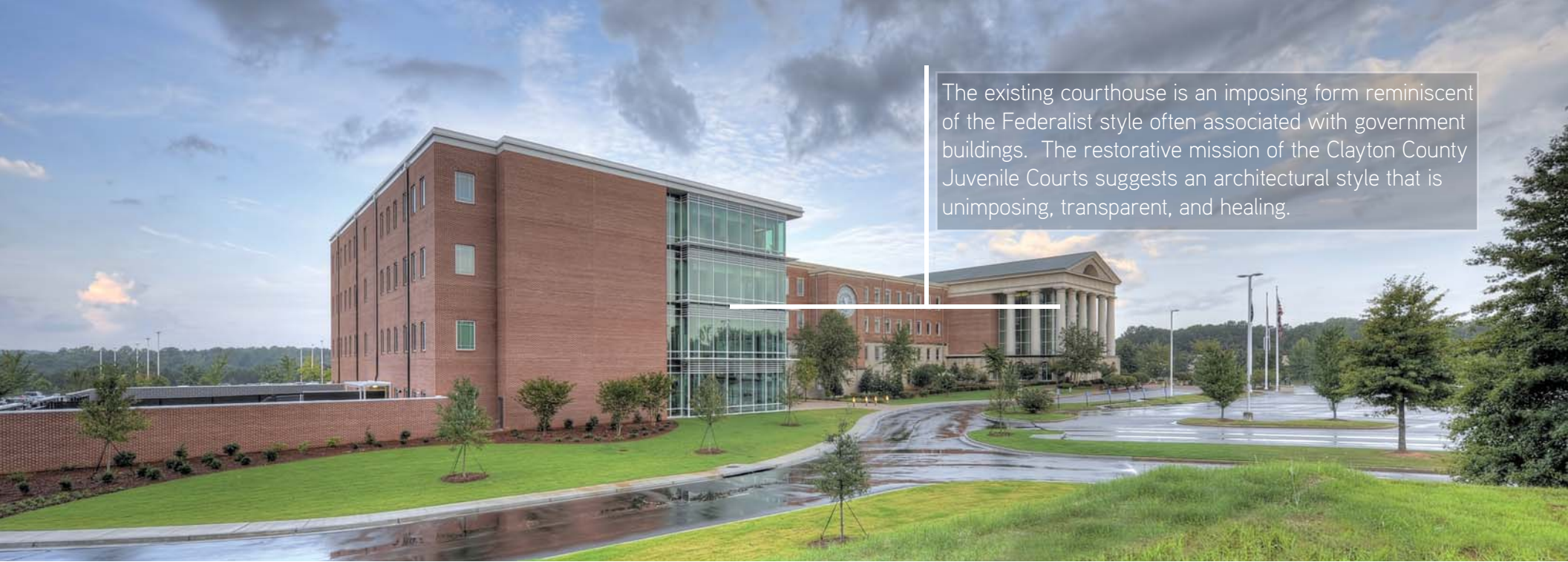
# CLAYTON COUNTY JUVENILE JUSTICE CENTER

JONESBORO, GEORGIA  
65,275 SF 4 FLOORS

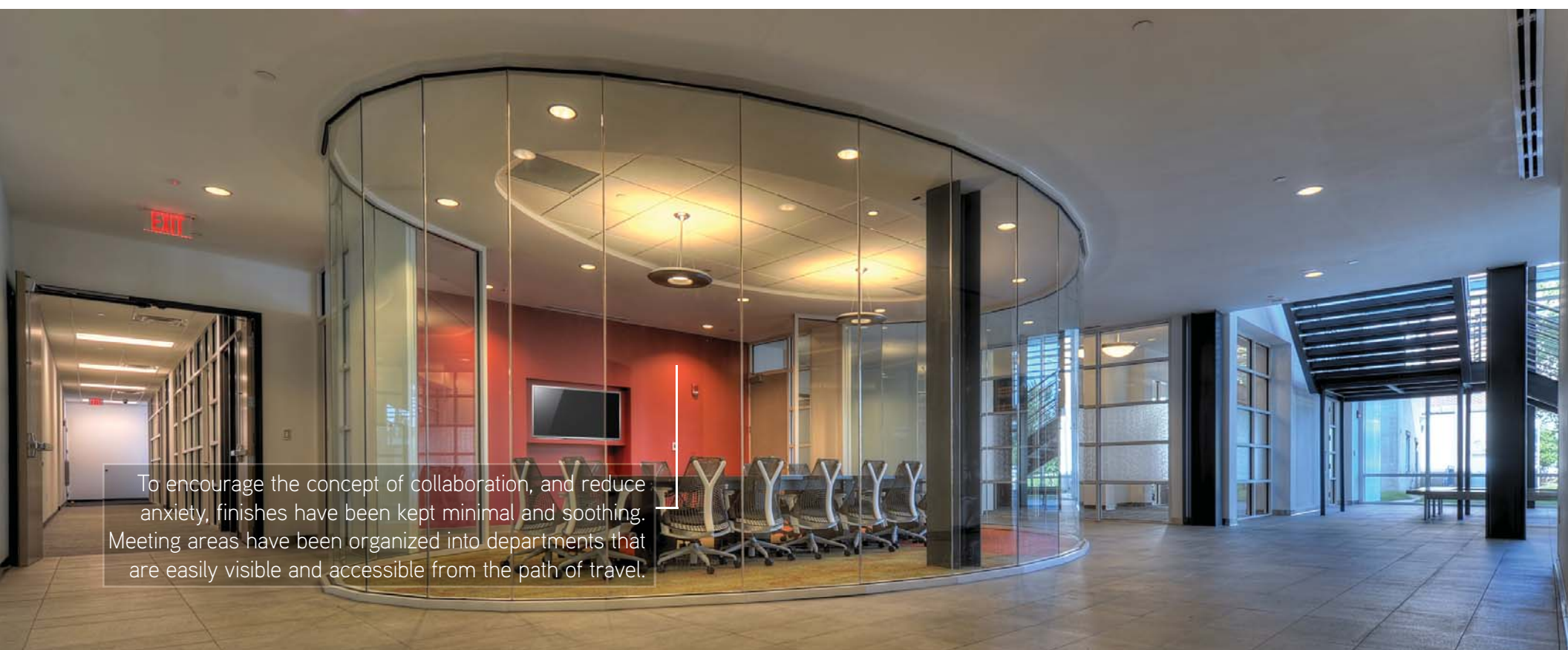
FEATURING 4 MODERN COURTROOMS, LARGE MEETING AREAS, STAFF BREAK ROOMS, UNIQUE ROOF TOP GARDEN, EXECUTIVE OFFICES, AND ADMINISTRATIVE SPACES. THROUGH PLANNING, FORM, MATERIAL AND COLOR, THE ARCHITECTURE PROVIDES SPACE FOR INFORMAL COMMUNICATION AND ENCOURAGES COLLABORATION THAT MITIGATES STRESS AND ANXIETY. - A PRIMARY TENANT ADOPTED BY THE JUVENILE COURT SYSTEM.







The existing courthouse is an imposing form reminiscent of the Federalist style often associated with government buildings. The restorative mission of the Clayton County Juvenile Courts suggests an architectural style that is unimposing, transparent, and healing.

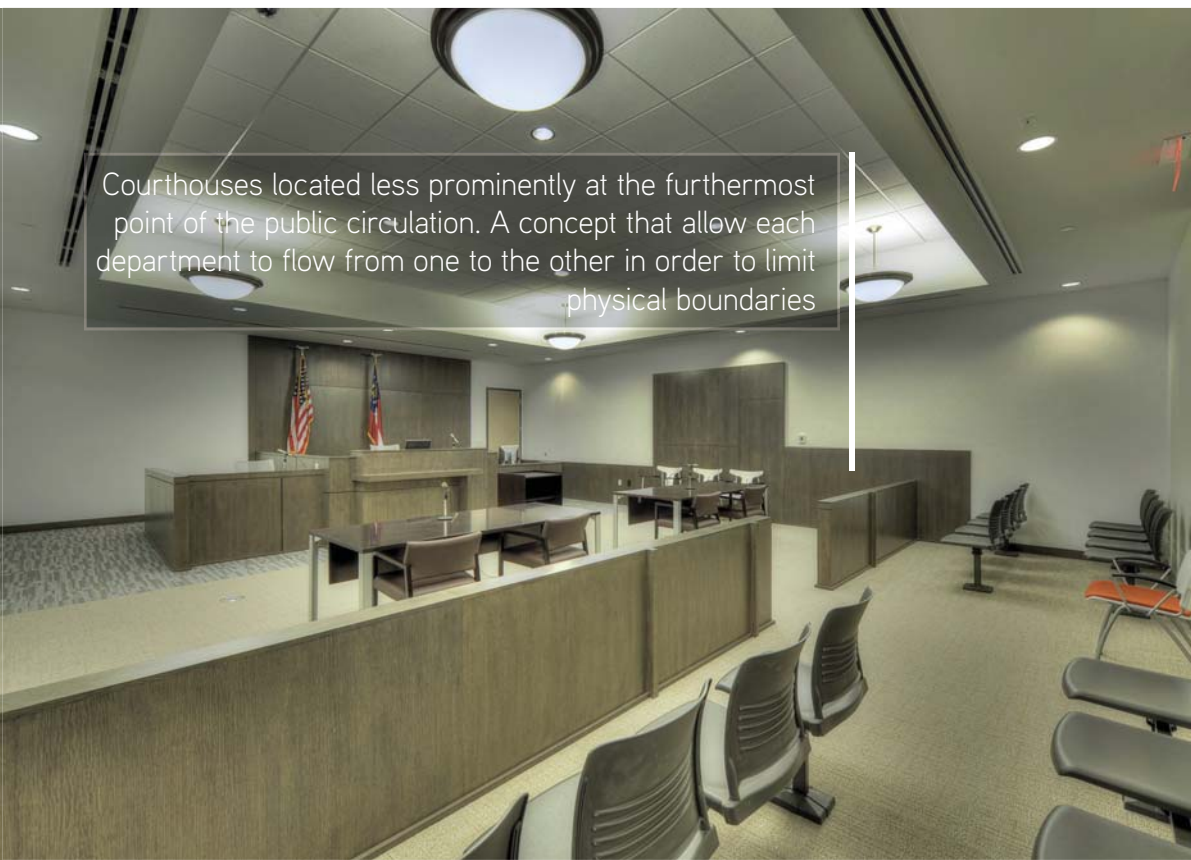


To encourage the concept of collaboration, and reduce anxiety, finishes have been kept minimal and soothing. Meeting areas have been organized into departments that are easily visible and accessible from the path of travel.





Administrative offices all with access to ample natural light - a passive strategy to reduce energy costs during peak operating hours



Courthouses located less prominently at the furthestmost point of the public circulation. A concept that allow each department to flow from one to the other in order to limit physical boundaries







# TORONTO SOUTH DETENTION CENTER

ONTARIO, CANADA  
890,000 SF

COMPLEX OF BUILDINGS FEATURING 1,650 BEDS INCLUDING ADMINISTRATION, SEGREGATION, MEDICAL AND MENTAL HEALTH ASSESSMENT, AND HOUSING UNITS. ADMINISTRATION AND PROGRAM SERVICES / RECORDS OFFICE, STAFF FACILITIES, HEALTH SERVICES / CLINICAL AREAS AND MAINTENANCE AND BUILDING SERVICES.

THE DESIGN REPRESENTS A CIVIC STRUCTURE THAT DOES NOT RESEMBLE A PRISON OR DETENTION FACILITY BUT RATHER A PLEASING ARCHITECTURAL ADDITION TO THE NEIGHBORHOOD.

THE BUILDING UTILIZES FULLY INTEGRATED, LEADING EDGE SECURITY AND BUILDING SYSTEMS THAT WOULD BE THE BENCH MARK FOR DETENTION FACILITIES AROUND THE WORLD.







4-STORY HOUSING UNITS DESIGNED WITH FUTURE EXPANSIONS

TOWER \*1\*

TOWER \*2\*

TOWER \*3\*

TOWER \*4\*

TORONTO INTERMITTANT CENTRE

PROPOSED TSDC BUILDING

MAINTENANCE AND POWER PLANT

FUTURE TOWER \*5\*

FUTURE TOWER \*6\*

FUTURE TIC EXPANSION

VEHICLE SALLYPORT

9 CARS

CONTROL POINT

MAIN ENTRANCE

PROPOSED VISITOR PARKING  
41 CARS

PROPOSED INMATE PARKING  
48 CARS

PROPOSED STAFF PARKING  
20 CARS

RECEIVING TARD

RECEIVING ENTRANCE

STAFF ENTRANCE FROM PARKING

BUS/ACCESS FOR INMATE TRANSIT

BARRIER FREE ENTRANCE

BARRIER FREE DROP-OFF

FIRE ROUTE

FIRE ROUTE





# THE OFFICE PARK AT TECON-NIGERSTAR

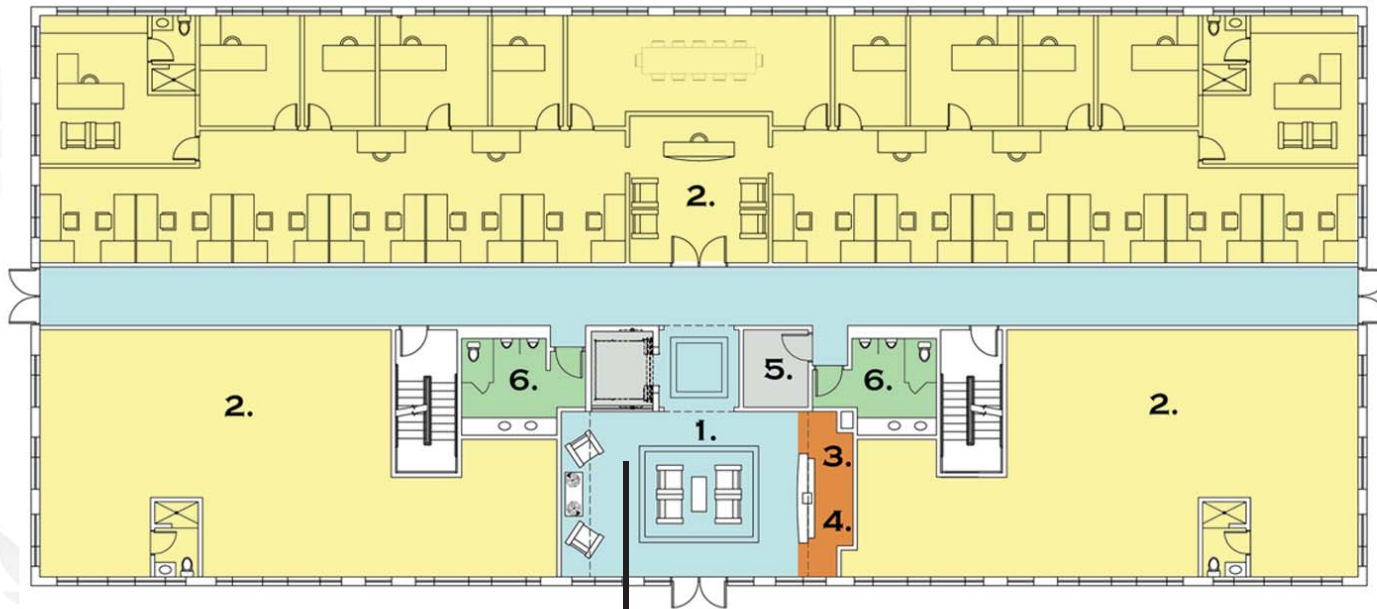
## ENERGY PARK

AS PART OF THE GREATER TECON-NIGERSTAR LIVE WORK PLAY COMMUNITY THE BUSINESS HUB FEATURES MODERN OFFICE SPACE NESTLED AMONG TREES AND LUSH GREENERY. WITH 4 BUILDINGS THAT CAN ACCOMMODATE BUSINESSES SMALL AND LARGE. TAILORED FOR THE GROWING SOPHISTICATION OF ENERGY BUSINESS OWNERS, EACH BUILDING OFFERS OUTDOOR VIEW OF BEAUTIFULLY LANDSCAPED COURTYARD, ADJACENT TO THE CALMING SERENITY OF A SANCTUARY OF GREENERY AND POND WITH AERATION FOUNTAIN.



EMERGENCY HELIPAD





*Ground Floor Plan*

- |                            |               |
|----------------------------|---------------|
| 1. 2-Story Lobby           | 4. Security   |
| 2. Offices (Build to Suit) | 5. Mechanical |
| 3. Reception               | 6. Toilets    |

FLEXIBLE FLOOR PLANS THAT CAN BE  
TAILORED TO EACH TENANT'S NEEDS



*Alternate Elevations*

# HOSTELS / HOUSING AND ACCOMMODATION



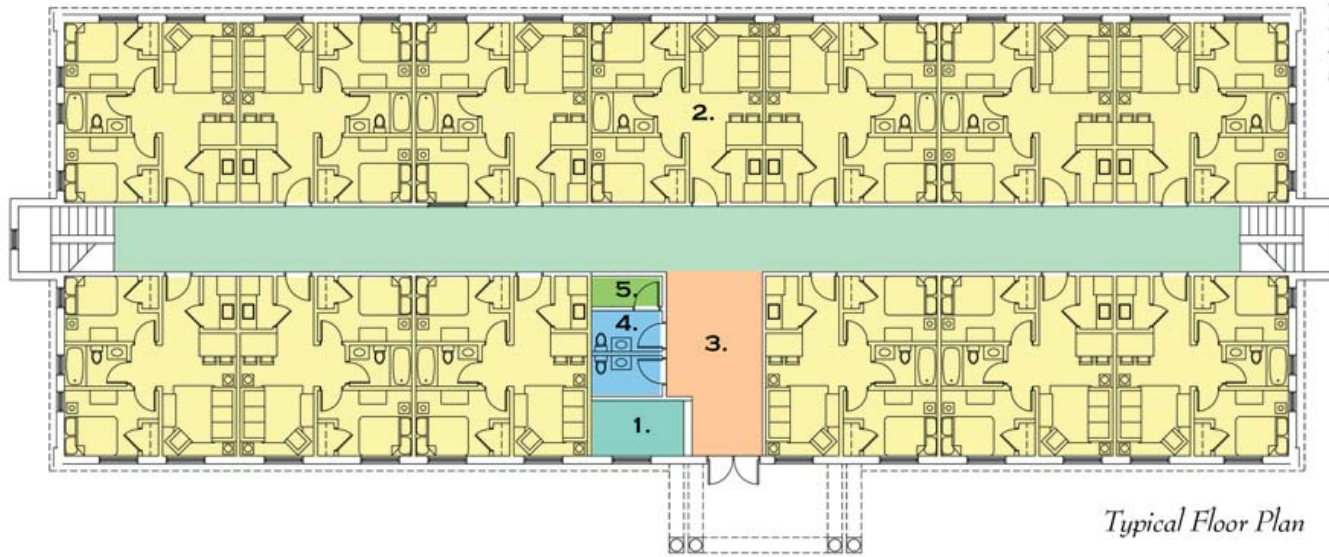
# EXPATRIATE HOUSING TECON -NIGERSTAR

## ENERGY PARK

THE COMMUNITY COMPRISES 173 UNITS OF 2-BEDROOM APARTMENT UNITS, ARRANGED AROUND A 1,670 SQ. M RECREATION CENTER, SWIMMING POOL, BUSH-BAR AND OUTDOOR PLAY AREAS, AND ADJOINING TENNIS COURT. THE HOUSING UNIT OFFER MODERN COOKING AND WASH/DRYER APPLIANCES AND THE RECREATION FACILITIES INCLUDE AMENITIES FOR THE OLD AND YOUNG ALIKE.



*Front Elevation*



*Typical Floor Plan*

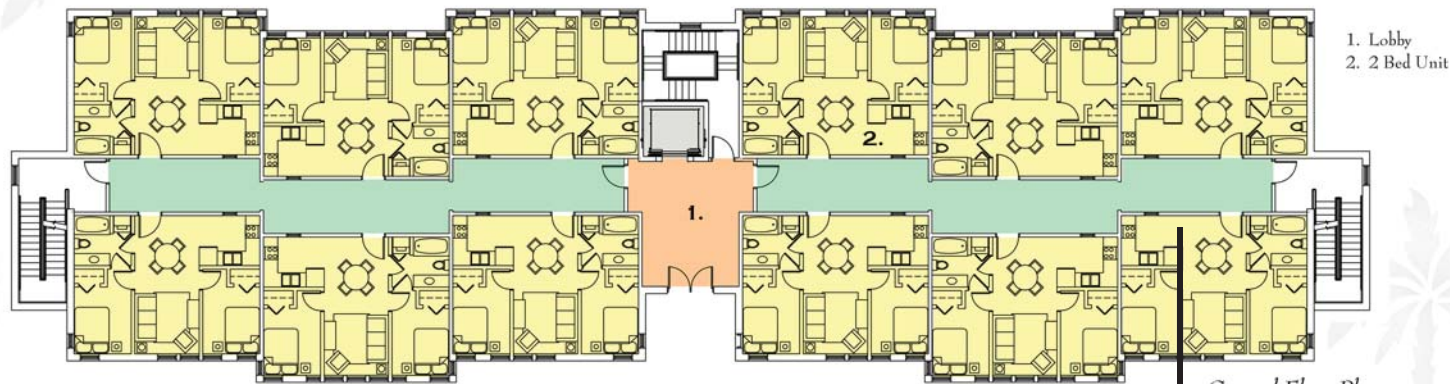
1. Reception
2. 2 Bed Unit
3. Lobby
4. Toilets
5. Storage



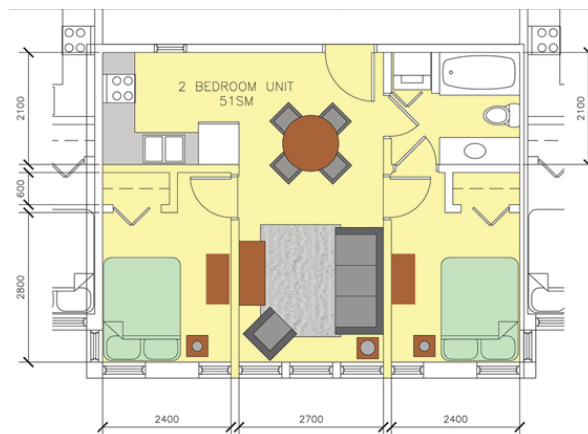
*Typical Unit Plan*



*Front Elevation*



*Ground Floor Plan*



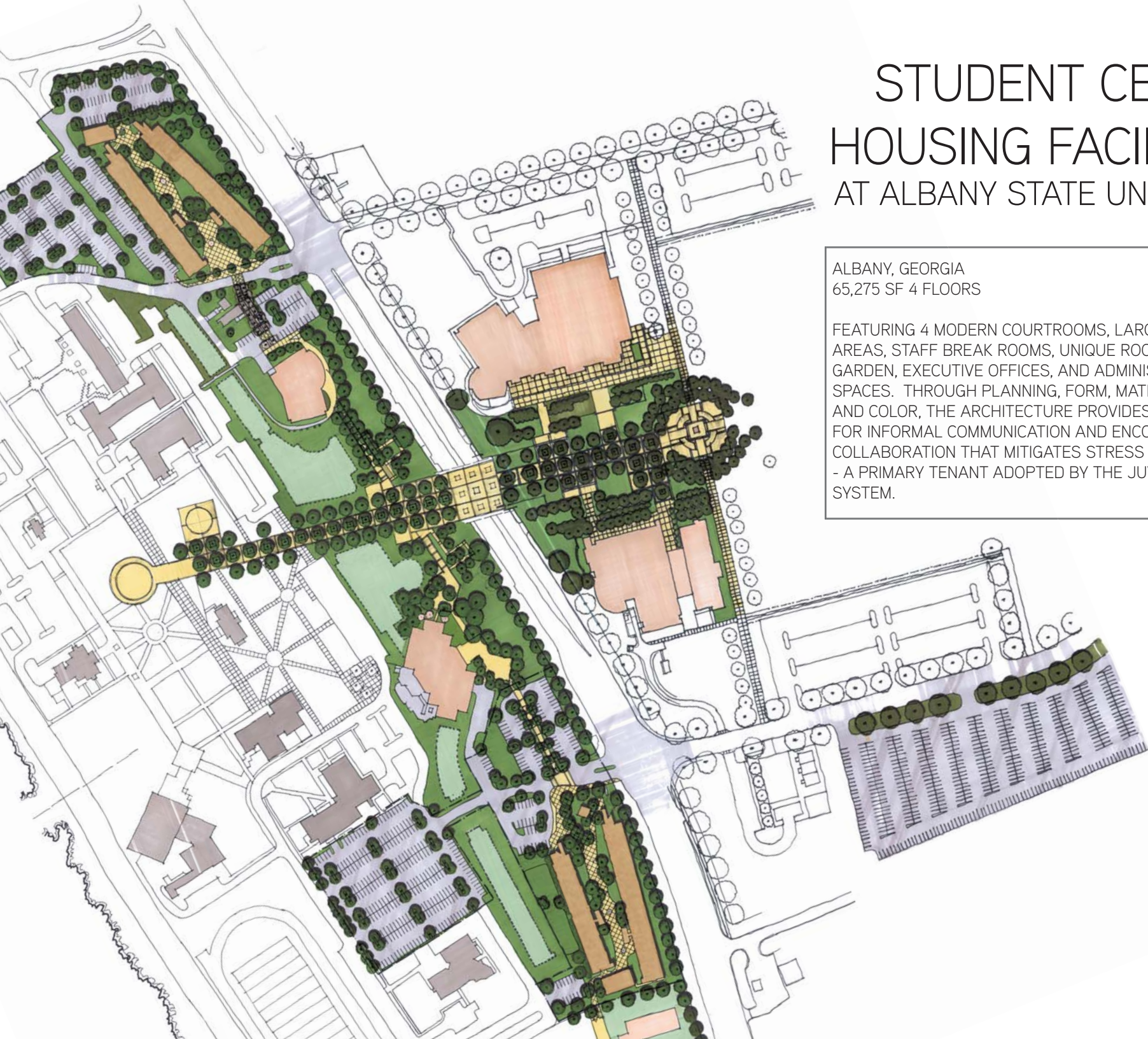
THIS EXPATRIATE BUILDING OPTION HAS THE ADDED BENEFIT OF ALLOWING TWO SEPARATE CLIENTS TO HOUSE THEIR STAFF SECURELY IN ON BUILDING.



# STUDENT CENTER HOUSING FACILITIES AT ALBANY STATE UNIVERSITY

ALBANY, GEORGIA  
65,275 SF 4 FLOORS

FEATURING 4 MODERN COURTROOMS, LARGE MEETING AREAS, STAFF BREAK ROOMS, UNIQUE ROOF TOP GARDEN, EXECUTIVE OFFICES, AND ADMINISTRATIVE SPACES. THROUGH PLANNING, FORM, MATERIAL AND COLOR, THE ARCHITECTURE PROVIDES SPACE FOR INFORMAL COMMUNICATION AND ENCOURAGES COLLABORATION THAT MITIGATES STRESS AND ANXIETY. - A PRIMARY TENANT ADOPTED BY THE JUVENILE COURT SYSTEM.





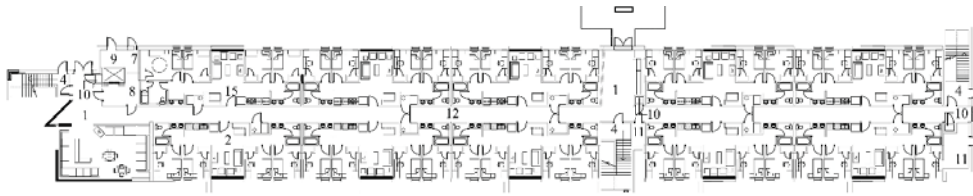


MATERIALS AND COLORS CHOSEN  
TO REFLECT THE HERITAGE THE  
SURROUNDING COMMUNITY

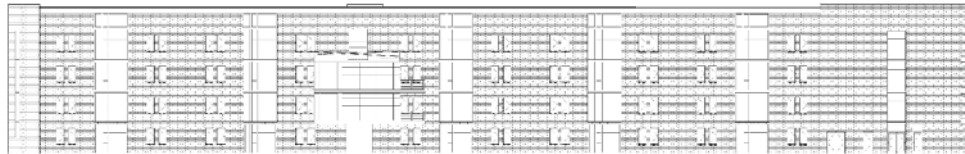


PLEASANT FLORAL COURTYARDS  
BETWEEN BUILDINGS PROVIDE  
SHELTERED SPACE FOR INTERACTION





PLAN



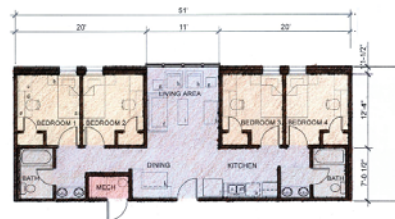
ELEVATION



ELEVATION



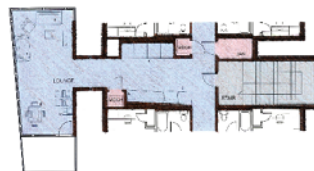
SECTION



UNIT PLAN



COMMONS



LOUNGE



COMMUNAL GATHERING SPACES ON ELEVATED PLATFORMS ALLOWING FOR SHELTERED INTERACTION WITH THE CENTRAL COURTYARD





# FORT JACKSON ARMY LODGE

COLUMBIA, SOUTH CAROLINA  
131,500 SF - 4 STORY, 210 ROOMS

THIS HOTEL TYPE FACILITY INCLUDES STANDARD ROOMS, SUITES, AND EXTENDED STAY SUITES AS WELL AS SUPPORT SPACE INCLUDING OFFICES, KITCHEN, LOBBY, LOUNGES, LAUNDRIES AND GEAR STORAGE.



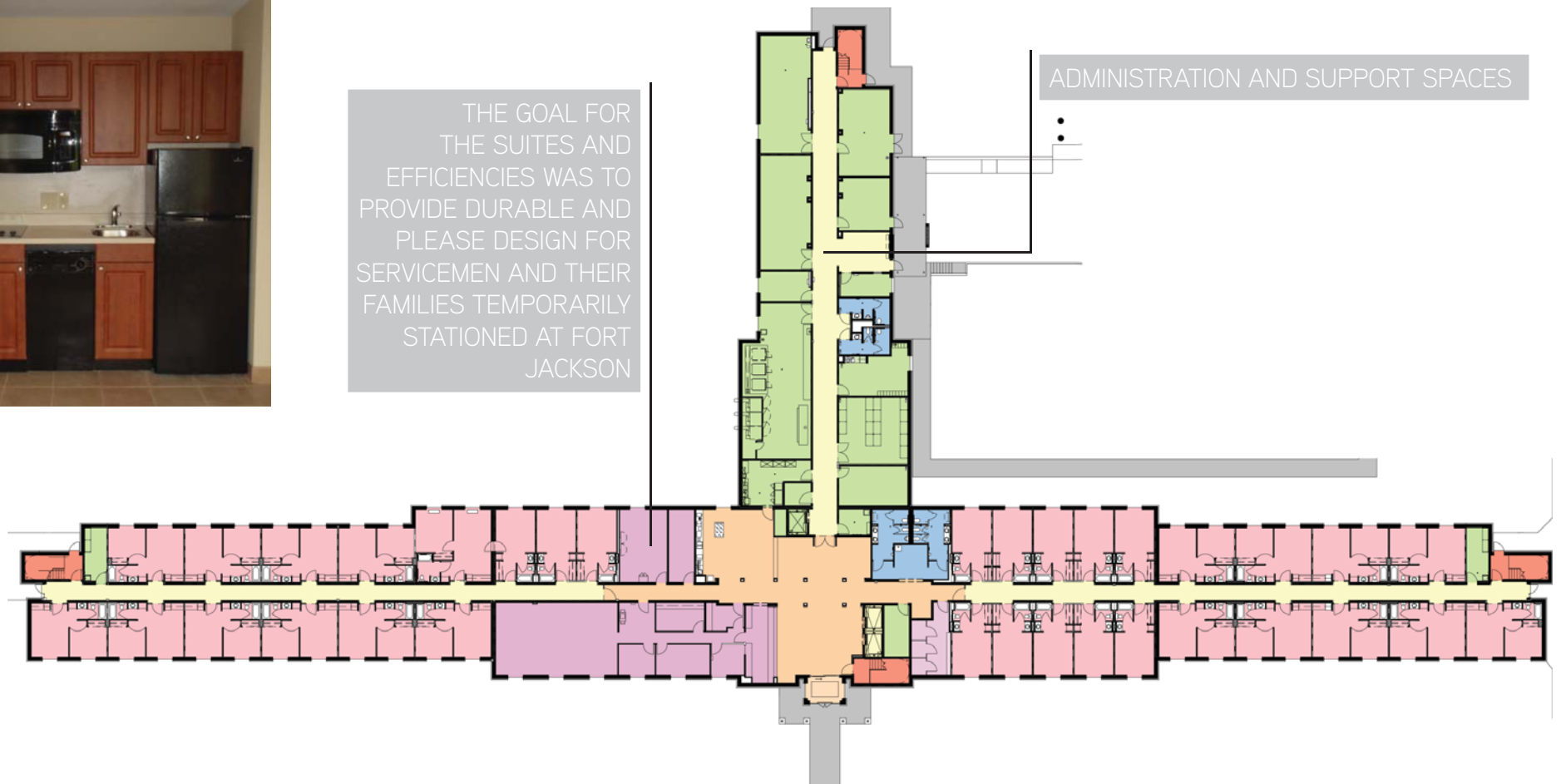
DEVELOPED UTILIZING ARMY AND BASE CRITERIA FOR FINISHES, FORCE PROTECTION AND FIRE PROTECTION SYSTEMS.







THE GOAL FOR THE SUITES AND EFFICIENCIES WAS TO PROVIDE DURABLE AND PLEASE DESIGN FOR SERVICEMEN AND THEIR FAMILIES TEMPORARILY STATIONED AT FORT JACKSON

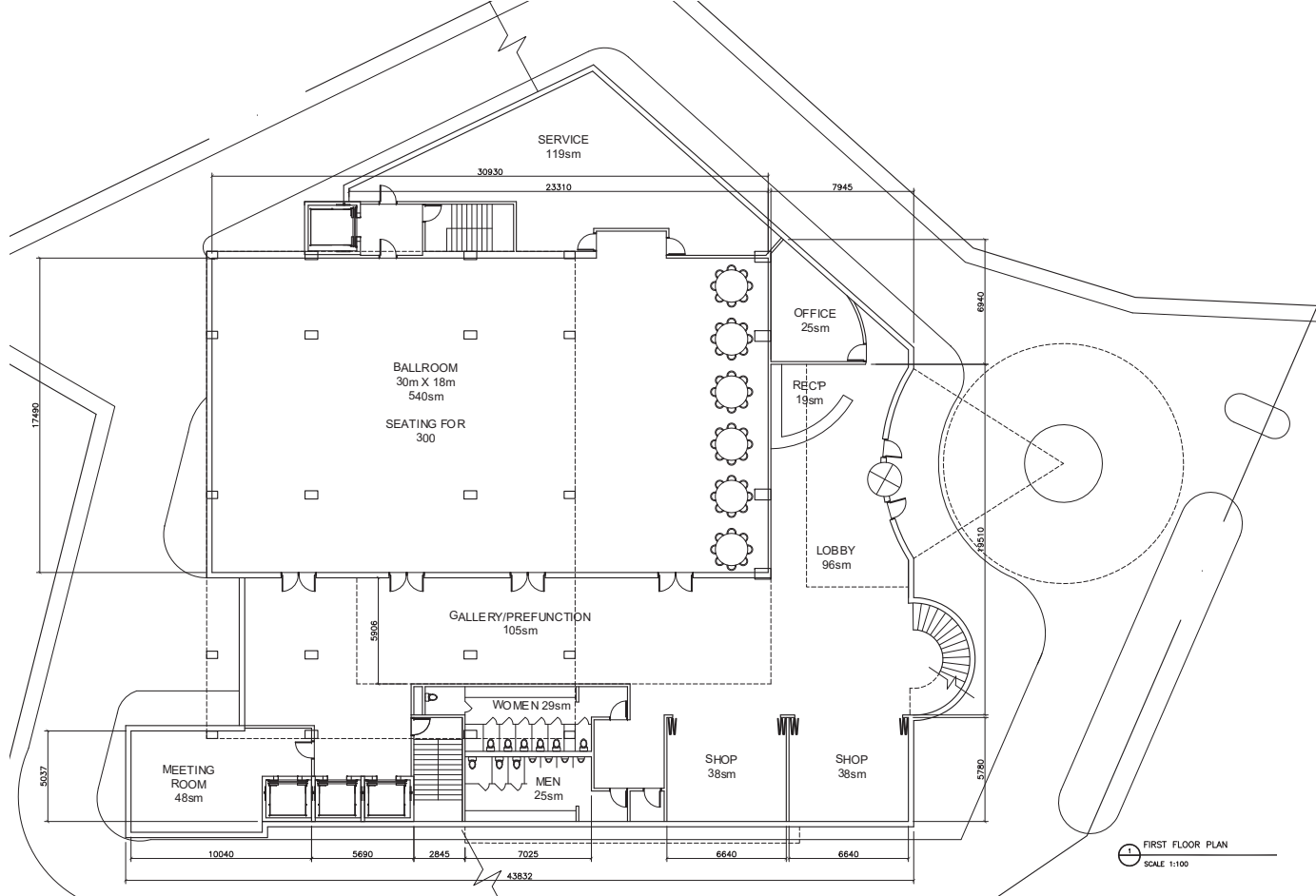
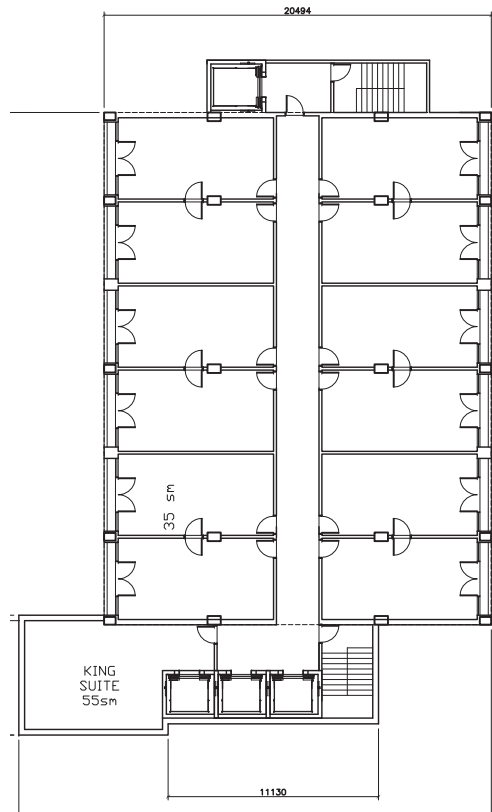




# HERITAGE PLAZA HOTEL AND CONFERENCE CENTER







- Sky Light
- Sky Lounge
- Restaurant
- Patio Dining
- Wading Pool

Night View

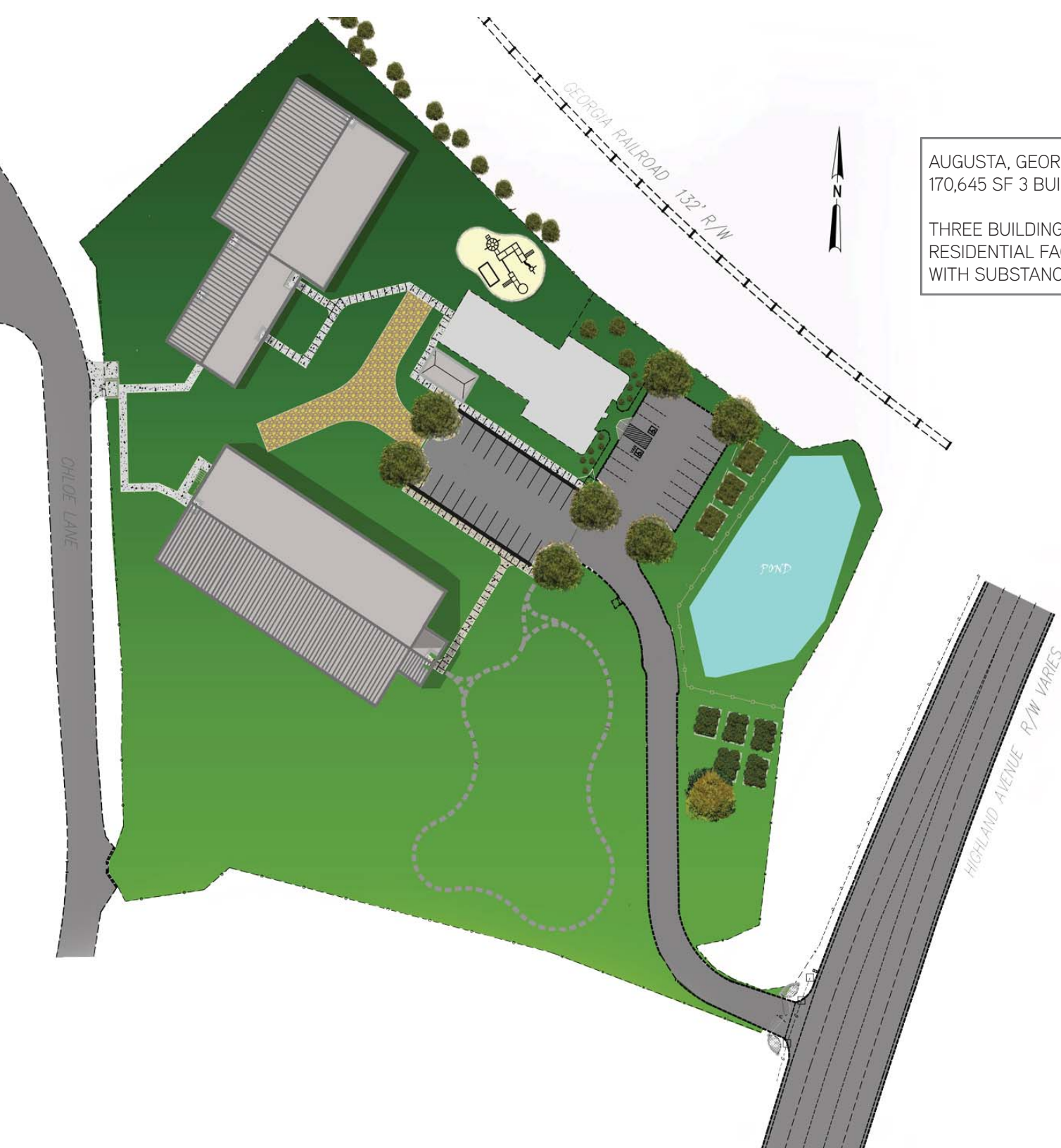




# HOPE HOUSE

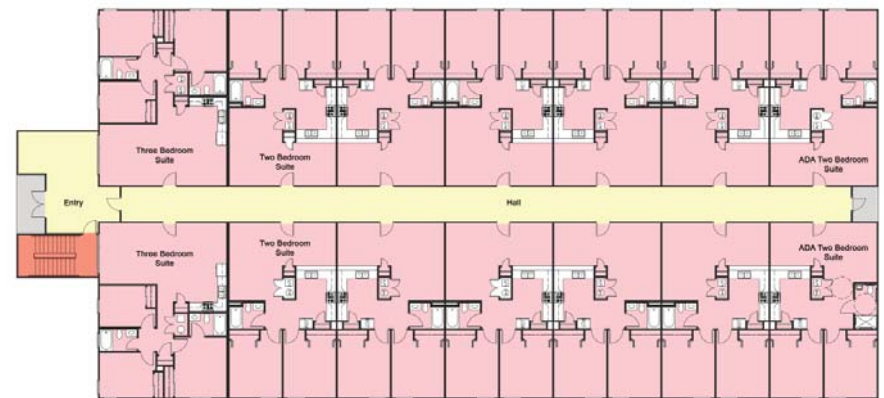
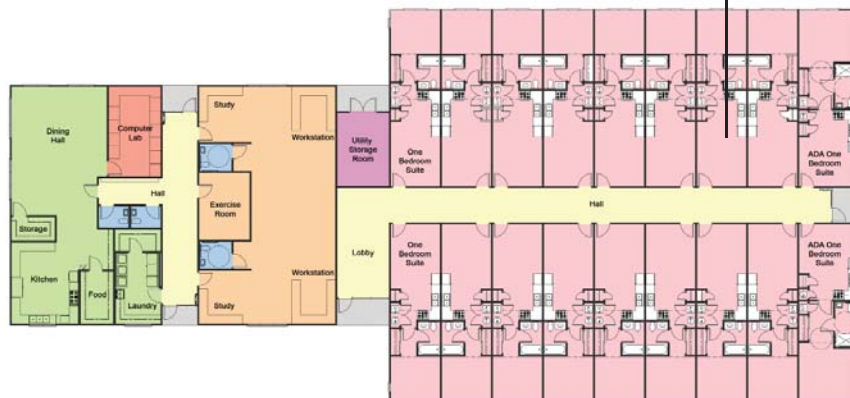
AUGUSTA, GEORGIA  
170,645 SF 3 BUILDING COMPLEX

THREE BUILDING COMPLEX 2 NEW AND 1 RENOVATION - A  
RESIDENTIAL FACILITY FOR THE TREATMENT OF WOMEN  
WITH SUBSTANCE ABUSE ILLNESS AND THEIR CHILDREN.





14, 235 SF RESIDENTIAL UNITS AND  
ADMINISTRATION, EDUCATION AND DINING  
FACILITIES

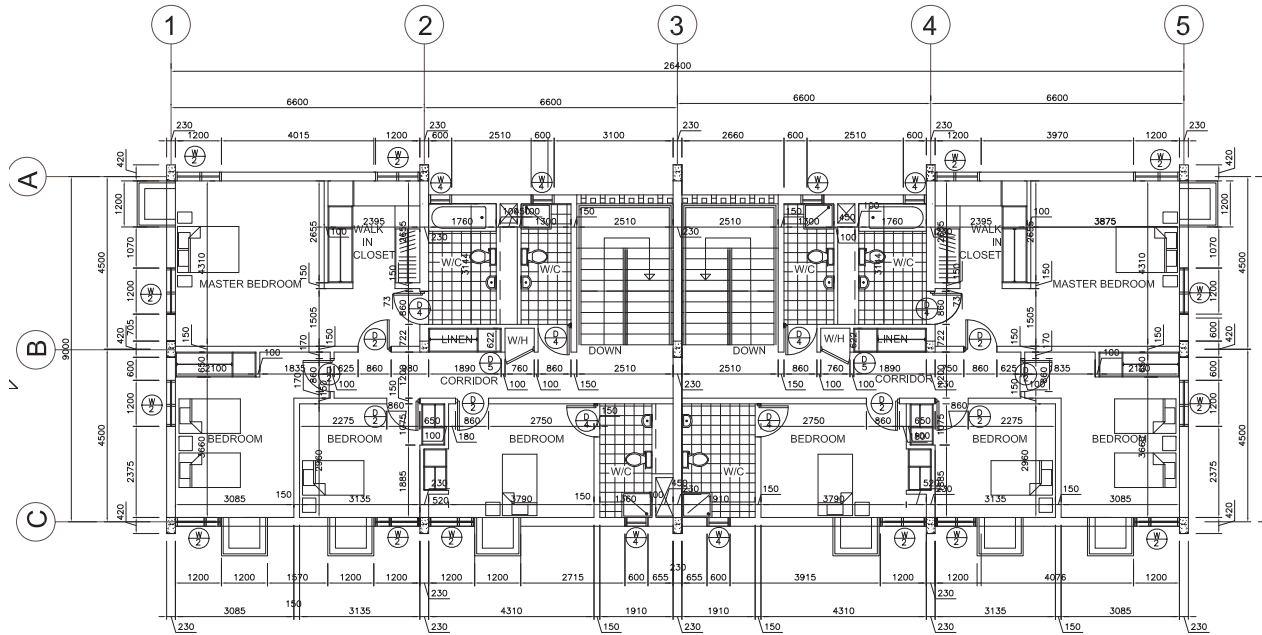
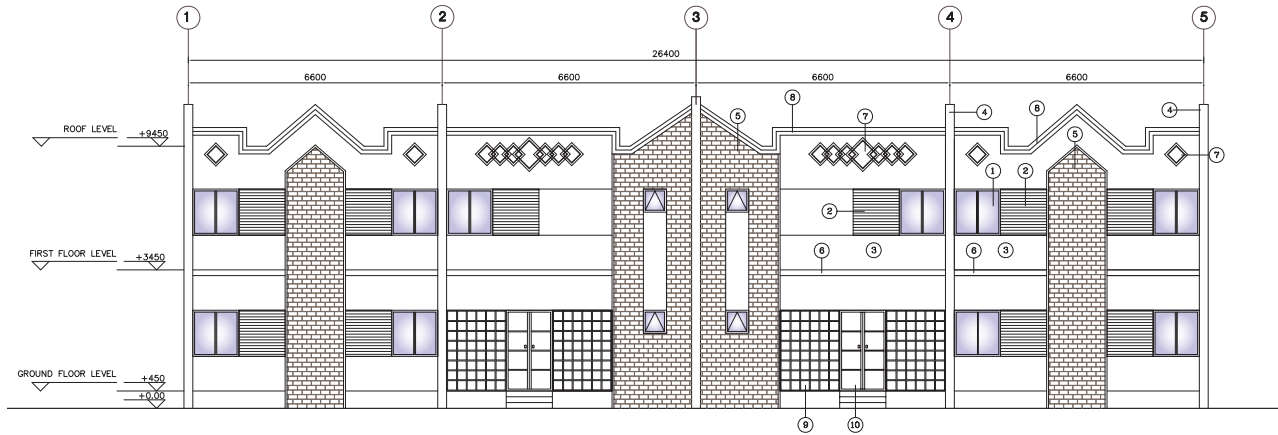




# ECOWAS - DIRECTOR'S HOUSING

10,300 SF

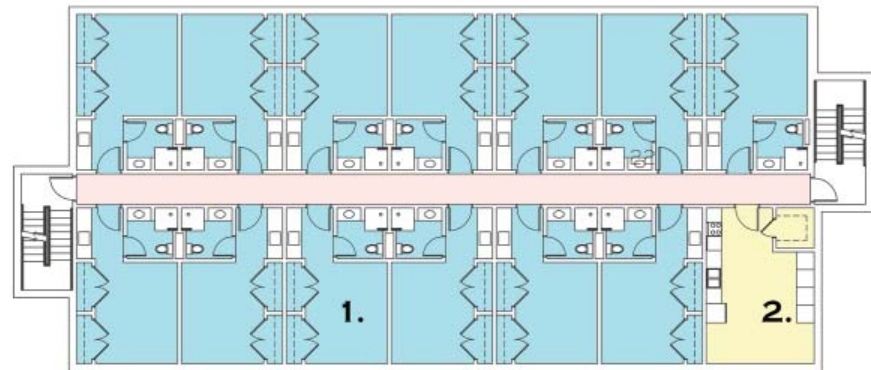
DESIGN FEATURES 4 APARTMENT STYLE  
4 BEDROOM UNITS IN THE LOCAL STYLE  
ARCHITECTURE



# JUNIOR STAFF HOUSING - TECON-NIGERSTAR

## ENERGY PARK

A KEY COMPONENT IS THE ABILITY TO PROVIDE CONVENIENT AND COMFORTABLE HOUSING AMENITIES FOR SUPPORT STAFF. THE JUNIOR STAFF HOUSING CONSISTS OF 4 RESIDENTIAL STYLE BUILDINGS PROVIDING 140 HOUSING UNITS AROUND A CENTRAL COURTYARD. WITH EFFICIENCY ROOMS, SHARED KITCHENS AND LAUNDRY FOR EACH FLOOR. GENEROUS GREEN SPACE FOR RELAXATION AND FAMILY TIME, THIS ON-SITE STAFF HOUSING IS A WONDERFUL SUPPORT AMENITY FOR ANY BUSINESS





SPECIALTY / MEDICAL



# RIVERBEND CORRECTIONAL FACILITY



MILLEDGEVILLE, GEORGIA  
291,200 SF 11-BUILDING COMPLEX

THIS FACILITY PROVIDES HOUSING FOR 1500 INMATES FOR THE STATE OF GEORGIA. THE DESIGN FEATURES INTAKE / PROCESSING, OUTDOOR RECREATION INCLUDING WALKING TRAIL AND BASKETBALL COURT, DORMITORY AND HOUSING PODS, TRAINING FACILITIES, DINING AND FOOD SERVICE, LAUNDRY, VISITATION, AS WELL AS MEDICAL INFIRMARY AND CLINIC.

THE ENTIRE COMPLEX WAS DESIGNED, BUILT AND OPERATIONAL IN 11 MONTHS.

52,700 SF MEDICAL SUITE LOCATED IN SUPPORT BUILDING CONTAINS RECEPTION, ADMINISTRATION AND NURSES STATIONS, INFIRMARY, DENTAL SUITES, X-RAY/ EMERGENCY ROOMS, AND MEDICAL EXAM ROOMS, RECORDS ROOMS, AND LAB STATIONS





RECEPTION AND ADMINISTRATION  
OFFICES WITH SECURE EXAMINATION  
ROOMS



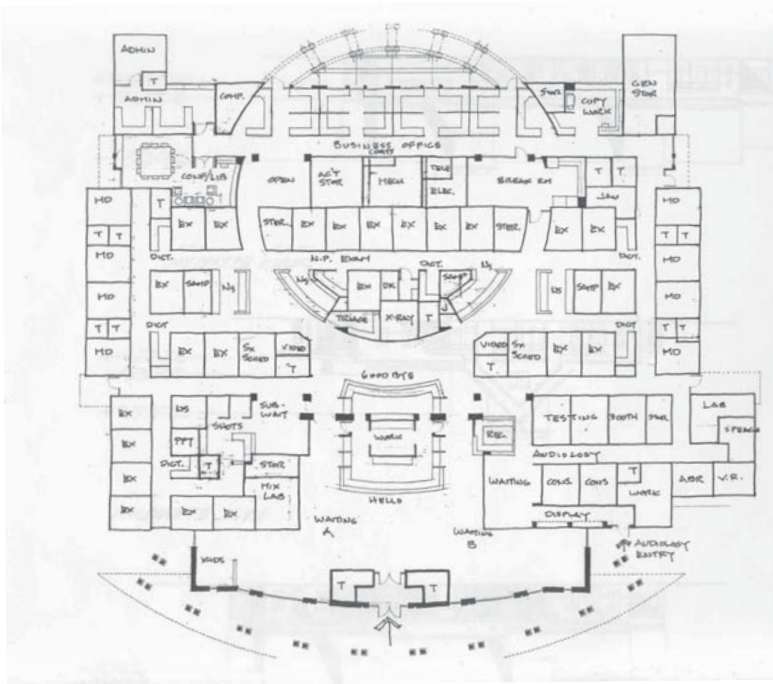
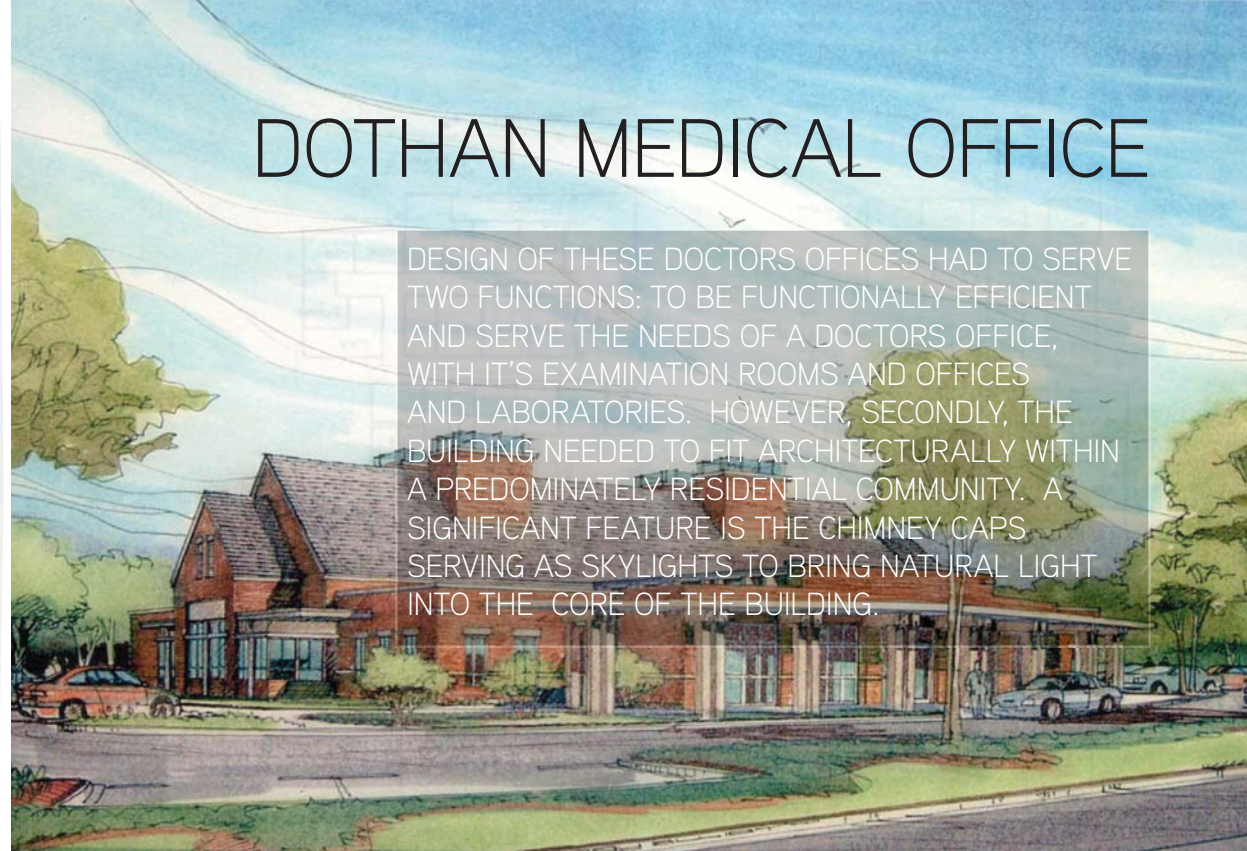
SECURE X-RAY EMERGENCY SUITE AND  
DETAIL EXAMINATION ROOMS



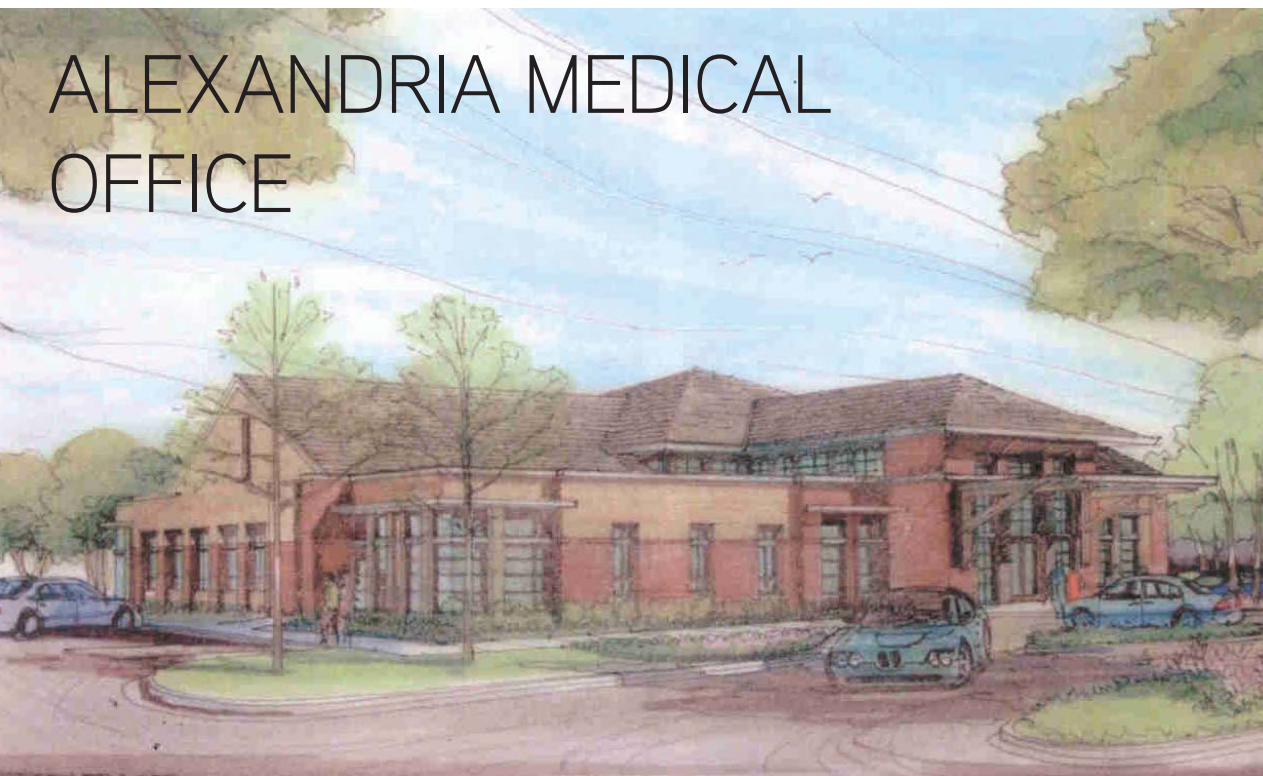


# DOTHAN MEDICAL OFFICE

DESIGN OF THESE DOCTORS OFFICES HAD TO SERVE TWO FUNCTIONS: TO BE FUNCTIONALLY EFFICIENT AND SERVE THE NEEDS OF A DOCTORS OFFICE, WITH IT'S EXAMINATION ROOMS AND OFFICES AND LABORATORIES. HOWEVER, SECONDLY, THE BUILDING NEEDED TO FIT ARCHITECTURALLY WITHIN A PREDOMINATELY RESIDENTIAL COMMUNITY. A SIGNIFICANT FEATURE IS THE CHIMNEY CAPS SERVING AS SKYLIGHTS TO BRING NATURAL LIGHT INTO THE CORE OF THE BUILDING.



# ALEXANDRIA MEDICAL OFFICE



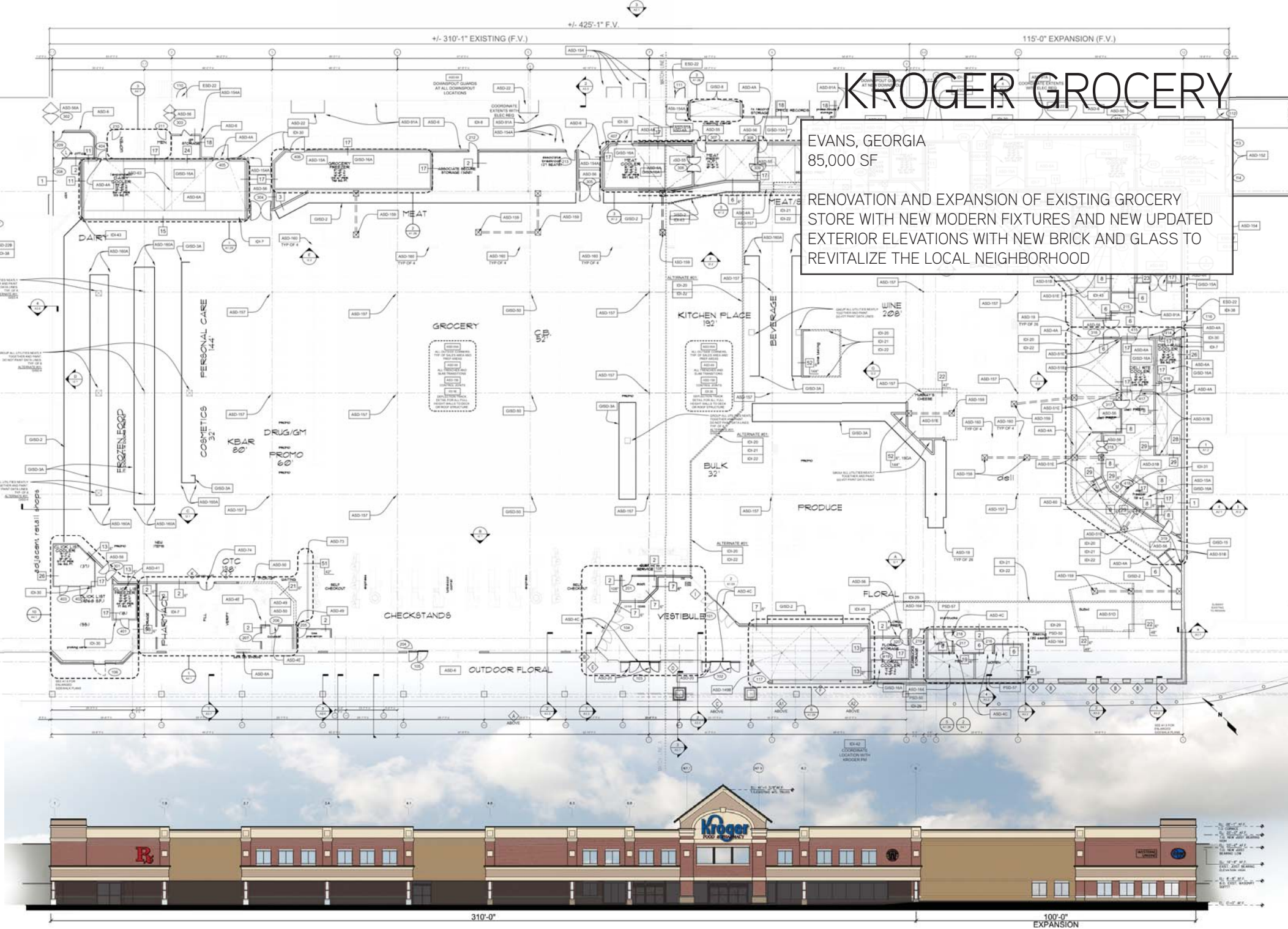




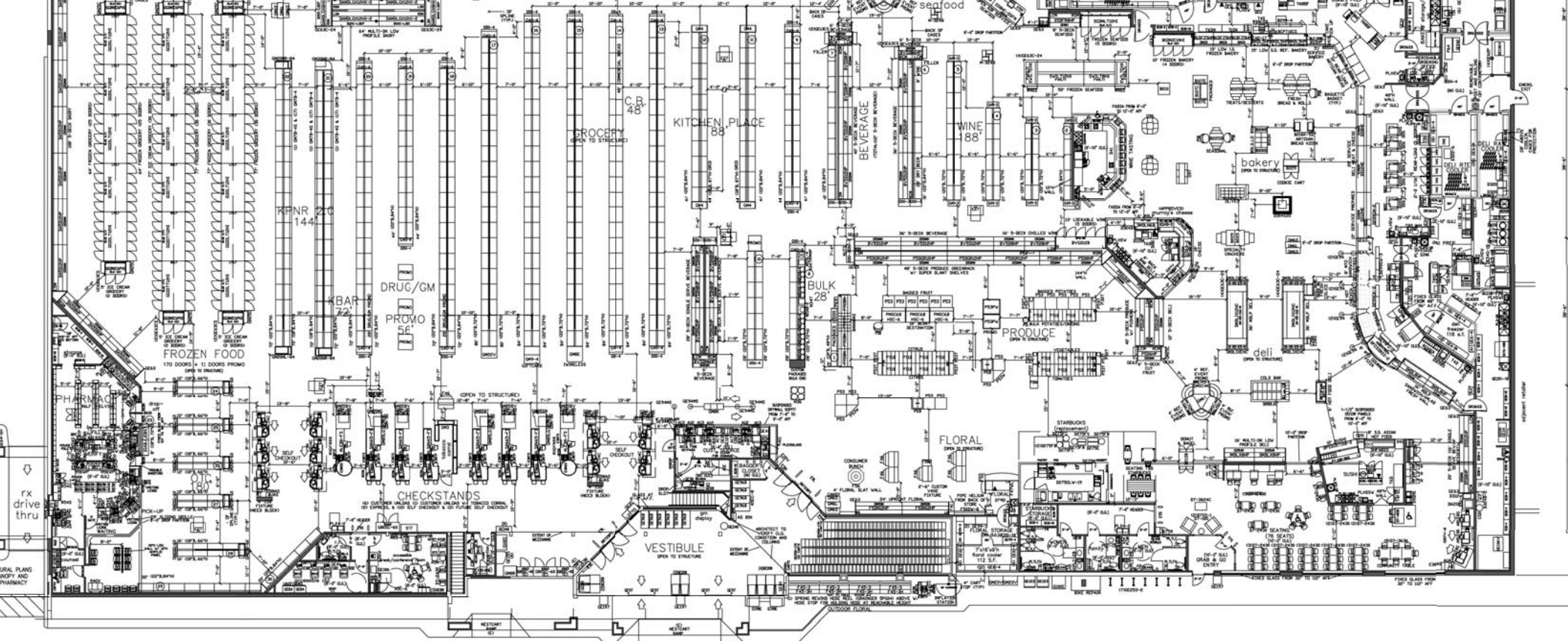
SUPER MARKETS



RENOVATION AND EXPANSION OF EXISTING GROCERY  
STORE WITH NEW MODERN FIXTURES AND NEW UPDATED  
EXTERIOR ELEVATIONS WITH NEW BRICK AND GLASS TO  
REVITALIZE THE LOCAL NEIGHBORHOOD







CLASSIC WHITE BRICK WITH VICTORIAN ERA  
ARCHITECTURAL DETAILS

# KROGER GROCERY



SAVANNAH, GEORGIA  
78,000 SF

RENOVATION AND EXPANSION OF EXISTING GROCERY  
STORE WITH NEW MODERN FIXTURES AND NEW UPDATED  
EXTERIOR ELEVATION TO REFLECT THE COASTAL PLAINS  
STYLE OF ARCHITECTURE OF THE CAROLINAS AND  
GEORGIA



POLICE / SECURITY



# SHERIFF'S TRAINING CENTER

DALLAS, GEORGIA

10,600 SF

DESIGN INCLUDES ADMINISTRATION SUPPORT SPACES FOR THE ADJACENT FIRING RANGE. THE INCLUDED CLASSROOMS, OFFICES, CONFERENCE ROOMS, LOCKER ROOMS, SHOWERS, KITCHEN, SECURE ARMORY AND A LARGE ASSEMBLY AREAS WHERE LARGE GROUP CAN MEET TOGETHER. THIS STATE OF THE ART FACILITY WILL TRAIN LOCAL DEPUTIES AND LAW ENFORCEMENT OFFICES FROM ALL OVER THE REGION IN FIREARMS AND SAFETY.



MAIN GROUP MEETING ROOM - SEATING FOR 200



FIRE STATIONS

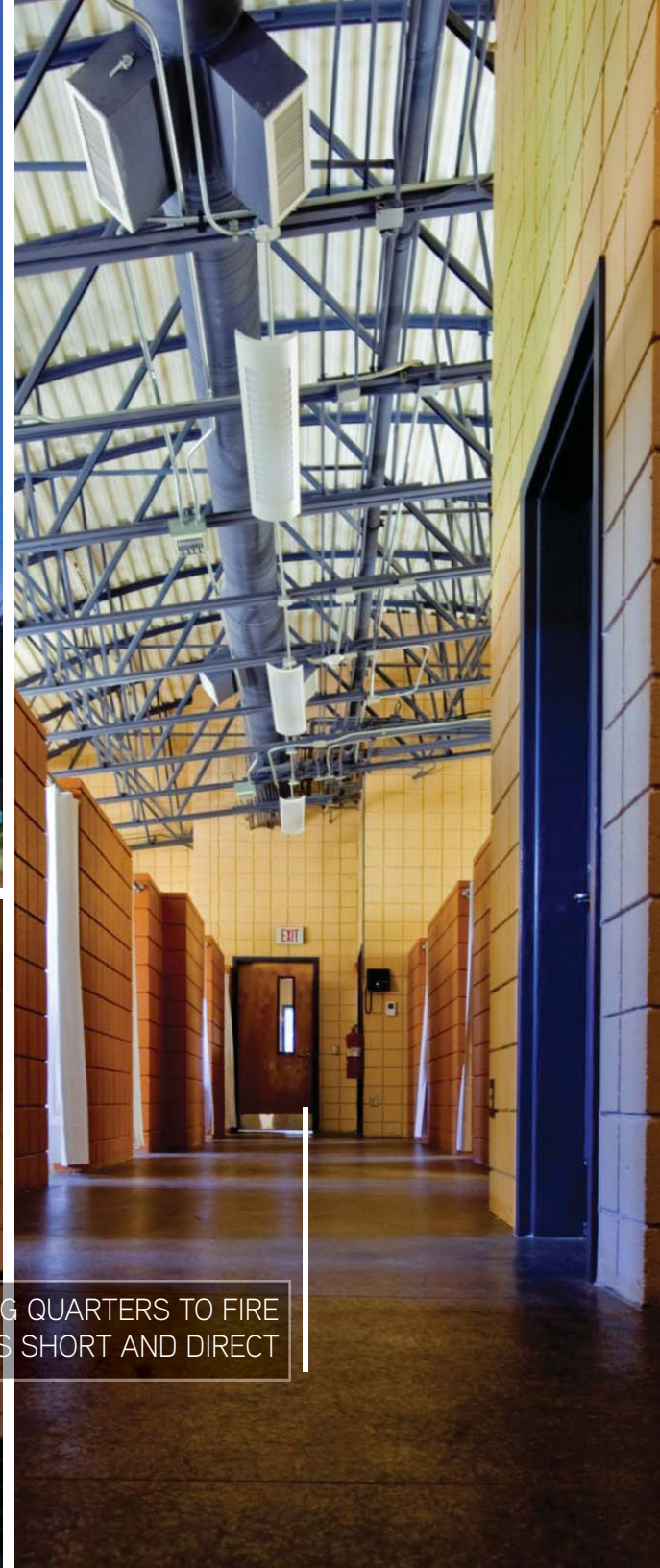
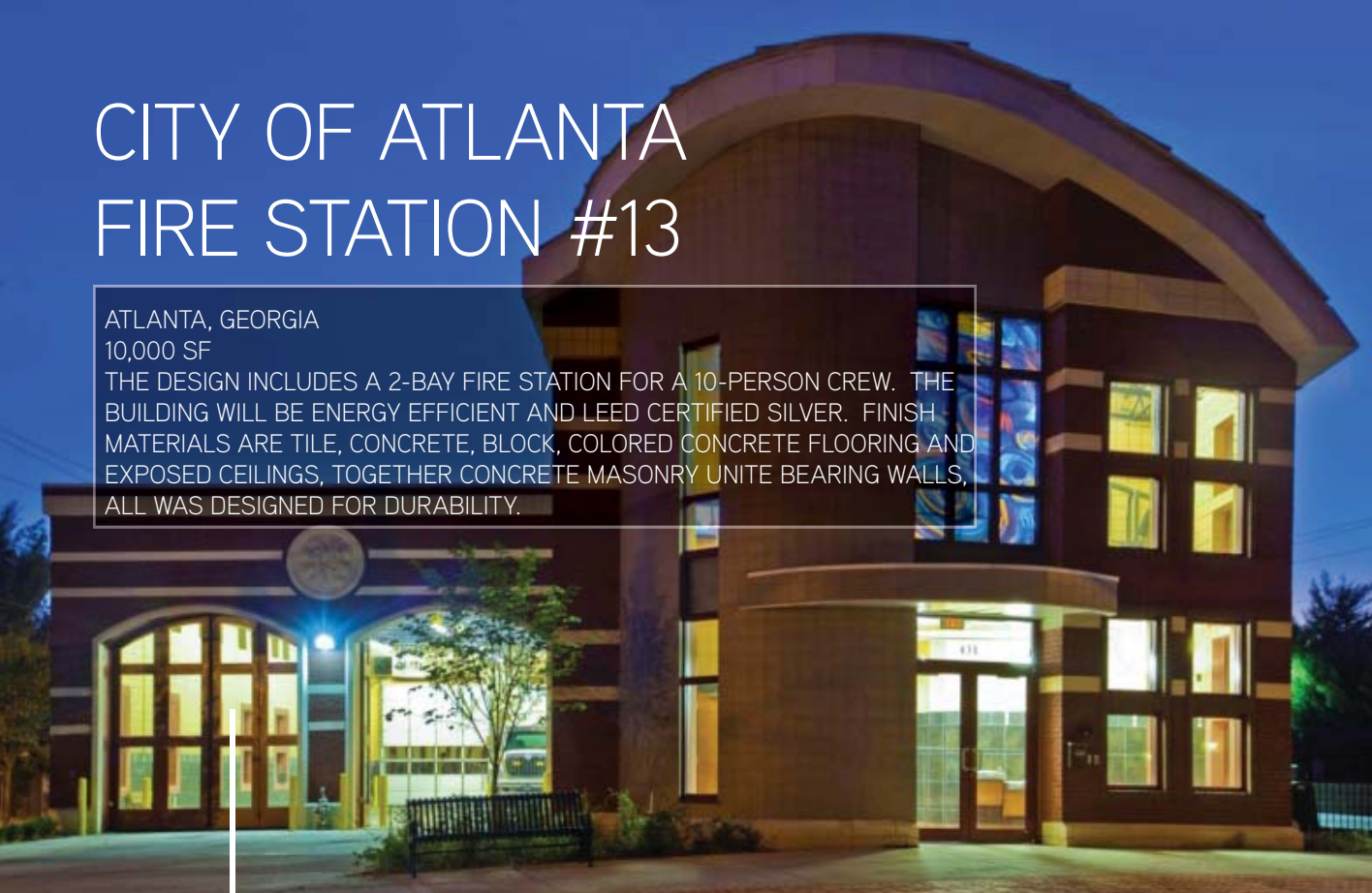


# CITY OF ATLANTA FIRE STATION #13

ATLANTA, GEORGIA

10,000 SF

THE DESIGN INCLUDES A 2-BAY FIRE STATION FOR A 10-PERSON CREW. THE BUILDING WILL BE ENERGY EFFICIENT AND LEED CERTIFIED SILVER. FINISH MATERIALS ARE TILE, CONCRETE, BLOCK, COLORED CONCRETE FLOORING AND EXPOSED CEILINGS, TOGETHER CONCRETE MASONRY UNITE BEARING WALLS, ALL WAS DESIGNED FOR DURABILITY.



ON SITE WATER RETENTION CHAMBERS ALLOW FIRE FIGHTERS TO WAS THEIR VEHICLES USING RAINWATER INSTEAD OF TREATED MUNICIPAL WATER.



DISTANCE FROM LIVING QUARTERS TO FIRE APPARATUS IS SHORT AND DIRECT





# CITY OF ATLANTA FIRE STATION #28

ATLANTA, GEORGIA  
12,650 SF

ONE STORY STRUCTURE THAT HOUSES FIRE STATION, POLICE SUBSTATION, COMMUNITY CONFERENCE ROOM AND CLOCK TOWER. STATION INCLUDES TWO TRUCK BAYS, A TEN BUNK DORMITORY, LIVING QUARTERS WITH KITCHEN, BATHROOMS, EXERCISE ROOM, SHOP, DECONTAMINATION ROOM, LAUNDRY ROOM, OFFICES AND STORAGE.

THE POLICE SUBSTATION INCLUDES RECEPTION AREA AND OFFICES WITH A 1,600 SF COMMUNITY CONFERENCE ROOM AND REST FACILITIES.



# UTILITY VEHICLE SERVICE



12-BAY MAINTENANCE WORKSHOP, AND  
WAREHOUSE FOR PARTS

# BUS MAINTENANCE FACILITY RICHMOND COUNTY

AUGUSTA, GEORGIA

39,500 SF

THE DESIGN OF THIS FACILITY INCLUDED A RENOVATION TO A LARGE ASSEMBLY AREA, MEETING ROOMS, UPDATED REST ROOMS, PROFESSIONAL OFFICE SPACES, LOCKER ROOMS AND SPACE FOR MAINTENANCE DRIVER PERSONNEL.







North Elevation

West Elevation



- 1. Workshop
- 2. Multi-level Offices
- 3. Display
- 4. Bay Support
- 5. Offices
- 6. Break Room
- 7. Toilets
- 8. Storage

11,270 SQ. M. EQUIPMENT AND PIPE STACKING AREA MADE ACCESSIBLE ON ALL SIDES AND WITH HIGH DENSITY CONCRETE PAVEMENT CAPABLE OF SUSTAINING THE SORT OF HEAVY INDUSTRIAL LOADING THAT WOULD BE EXPECTED IN AN ENERGY PARK.

# FLEET MAINTENANCE TECON-NIGERSTAR

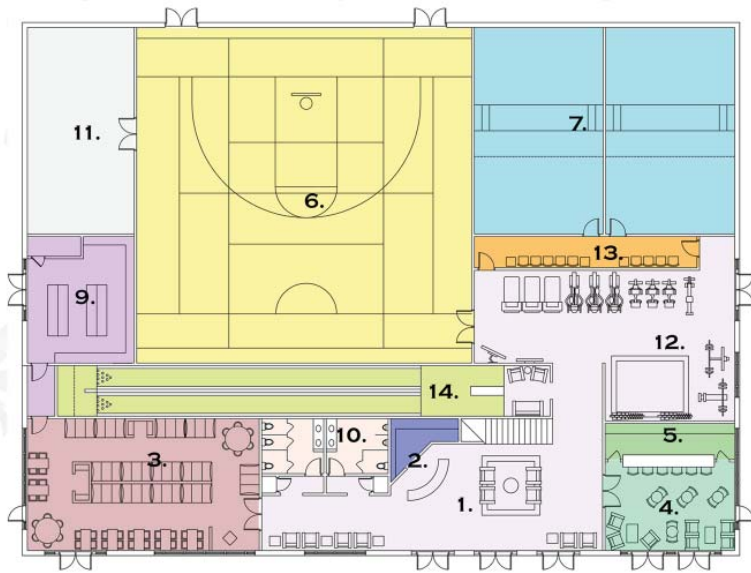
ENERGY PARK  
2,140 SQ. M.

FIVE MAINTENANCE BAY AND CAN BE OUTFITTED WITH A WASH BAY TO ACCOMMODATE AUTOMATIC WASH APPURTENANCES. THE PARTS DISPLAY AND WORKSHOP OFFICES, AND THE ADJOINING 900 SQ. M. FLEET MANAGEMENT OFFICES, COMBINE TO MODERN FACILITIES FOR A FLEET OF MORE THAN 200 VEHICLES.

OUTFITTED WITH DRIVE THROUGH BAYS AND ROLL-UP DOORS, THERE'S ENHANCED ACCESSIBILITY TO THE ADJOINING 2,900 SQ. M EQUIPMENT STORAGE AND PARKING AREAS.

STAFF CLUB





Ground Floor Plan



# RECREATION CENTER TECON-NIGERSTAR

ENERGY PARK  
2,140 SQ. M.

NEED A PLACE FOR A MORNING COFFEE? A QUIET SPOT TO READ? A WORKOUT, A GAME OF BOWLING OR PICK-UP BASKETBALL? THE RECREATION CENTER AT TECON-NIGERSTAR HAS YOU COVERED. COME OVER FOR SOME TENNIS OR GAME OF SQUASH OR RACQUETBALL AND COOL OFF IN OUR 5 LANE POOL.

1. Lobby
2. Office/Reception
3. Dining
4. Lounge
5. Bar
6. Basketball
7. Squash
8. Exterior Tennis Court
9. Kitchen
10. Toilets
11. Storage/Mech
12. Weights
13. Waiting Area
14. Bowling Alley







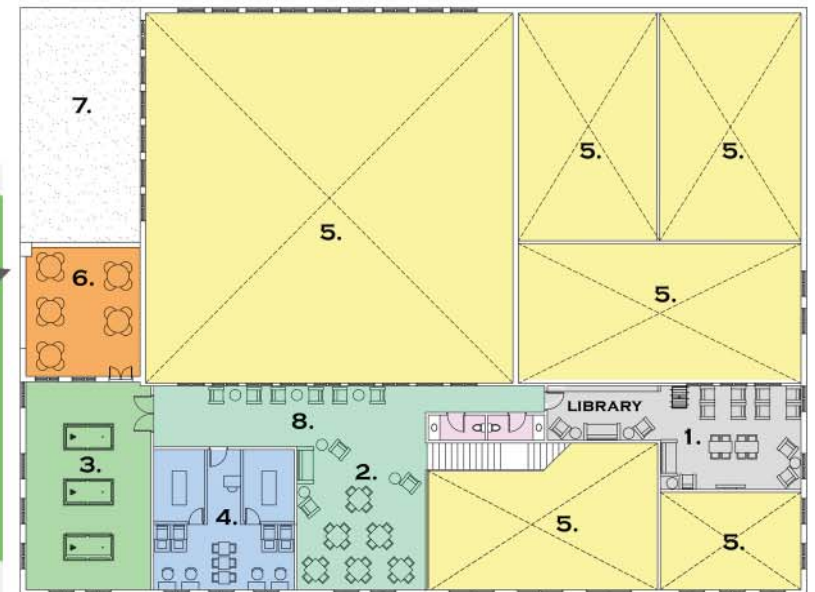
*East Elevation*



*West Elevation*

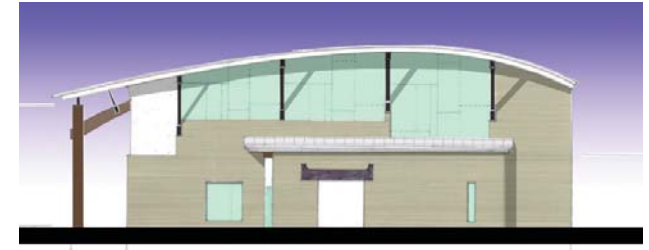
FEATURES UN INTERRUPTIBLE POTABLE WATER AND WASTEWATER UTILITIES, 24/7 INTEGRATED POWER SUPPLY, FUEL SERVICE STATION, AND A 1,200 METER JOGGING TRAIL THAT WINDS THROUGH THE ENERGY PARK'S SANCTUARY LUSH GREENERY, AERATION WATER FOUNDATION AND PARK BENCHES

1. Lounge/Reading/Library
2. Card Games
3. Pool Table
4. Salon/Spa
5. Open to Below
6. Covered Patio
7. Roof
8. Observation



*First Floor Plan*

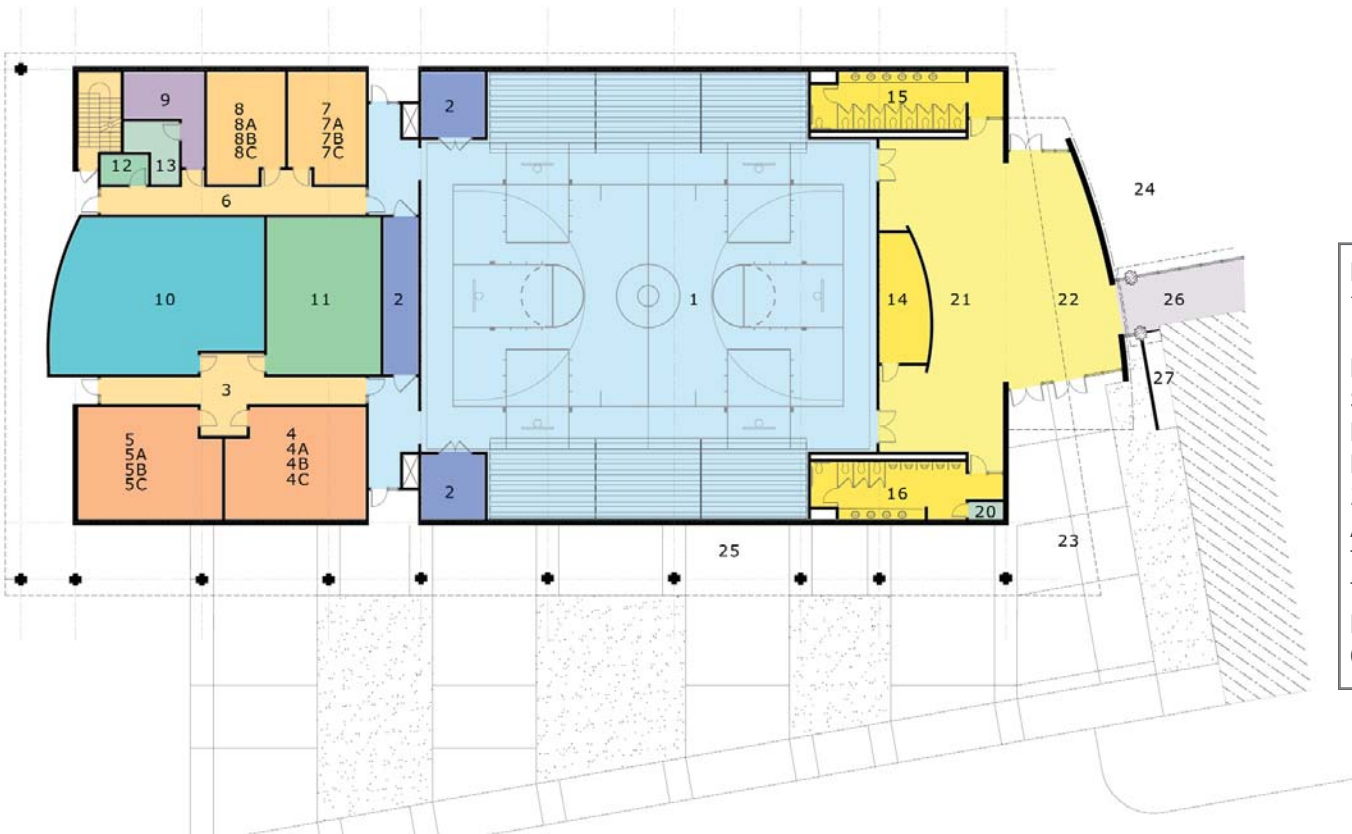




# RENFROE MIDDLE SCHOOL GYMNASIUM

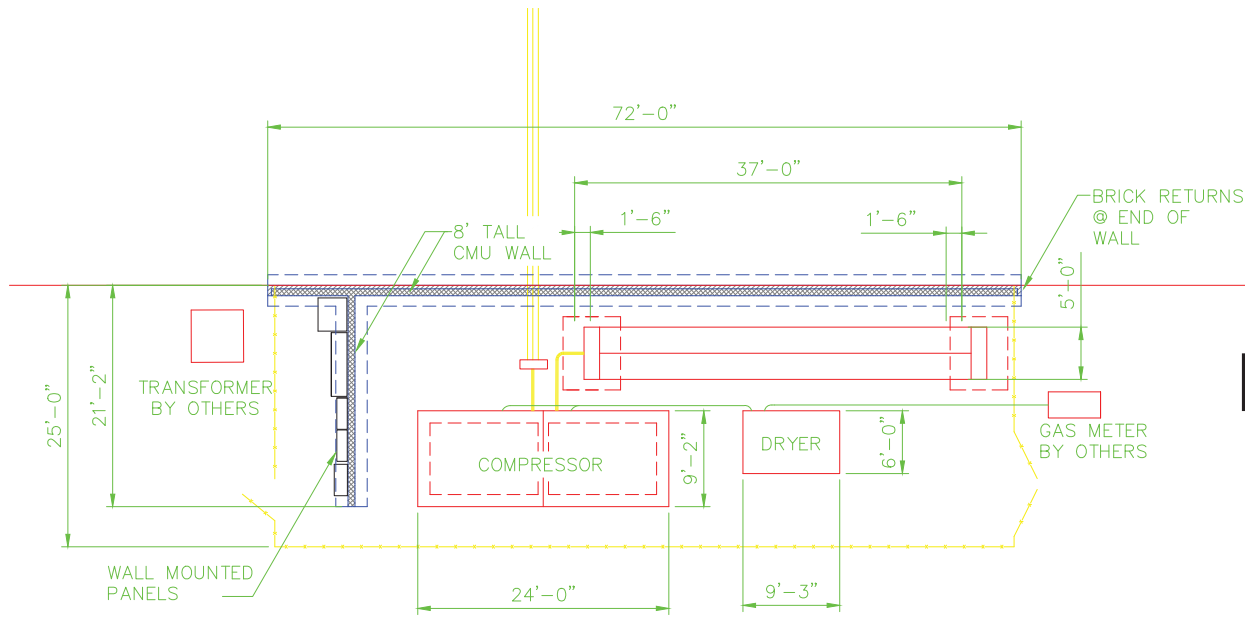
DECATUR, GA  
19,562 SF

DESIGN HAD TO FIT INTO THE HISTORY CRAFTSMAN STYE HOMES OF THE SURROUNDING CORRIDOR. DESIGN INCLUDES NEW CONCESSIONS AND FRONT ENTRY LEADING INTO AN 11,000 SF GYM SPACE, 2 PRACTICE COURTS AND 1000 SEAT BLEACHER AREA, WITH ANCILLARY SPACES, LOCKER ROOMS, TOILETS, SHOWERS AND LAUNDRY. ADJACENT TO THE GYMNASIUM ARE PRACTICE ROOMS WEIGHT ROOMS, STORAGE AND UTILITIES. DESIGN FEATURES CLERESTORY WINDOWS AND CURVED WOOD BEAMS.

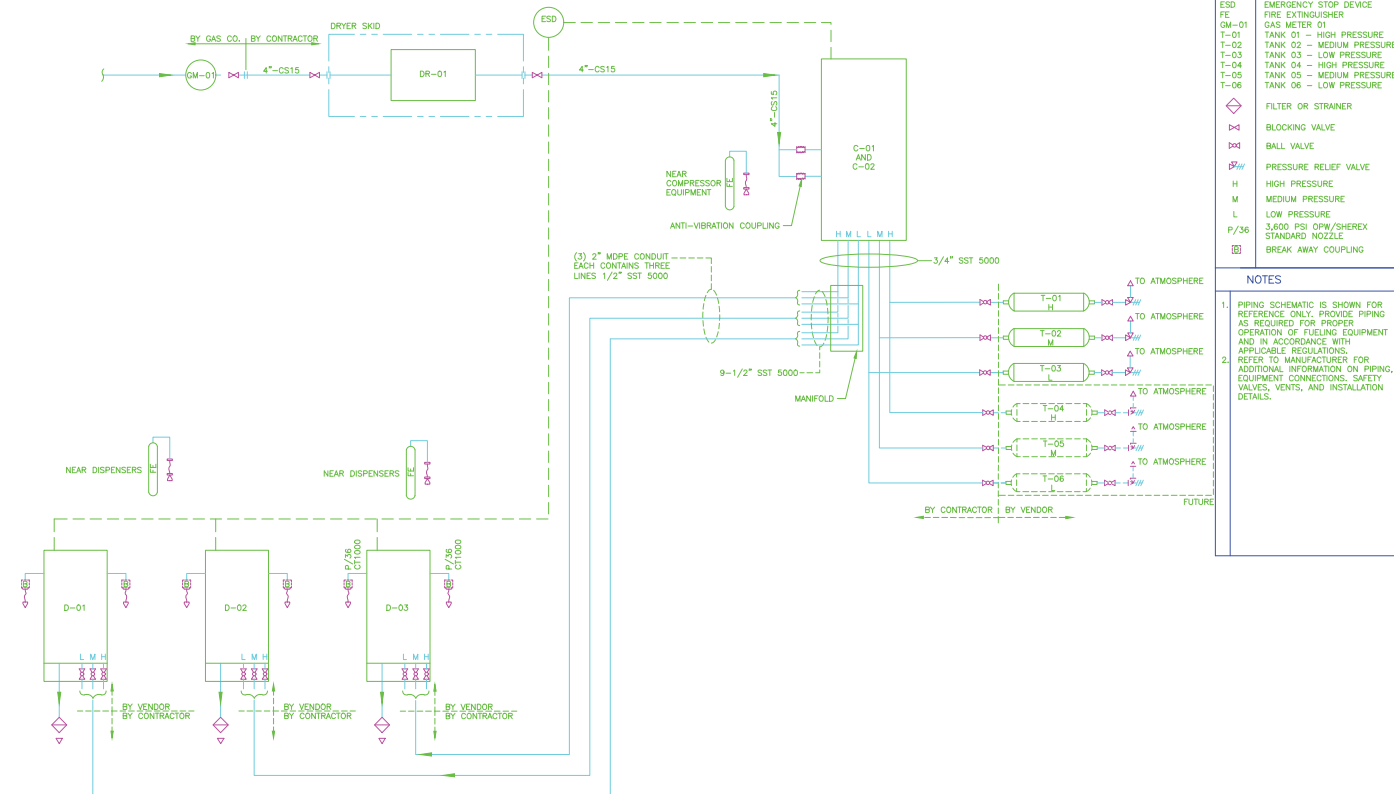


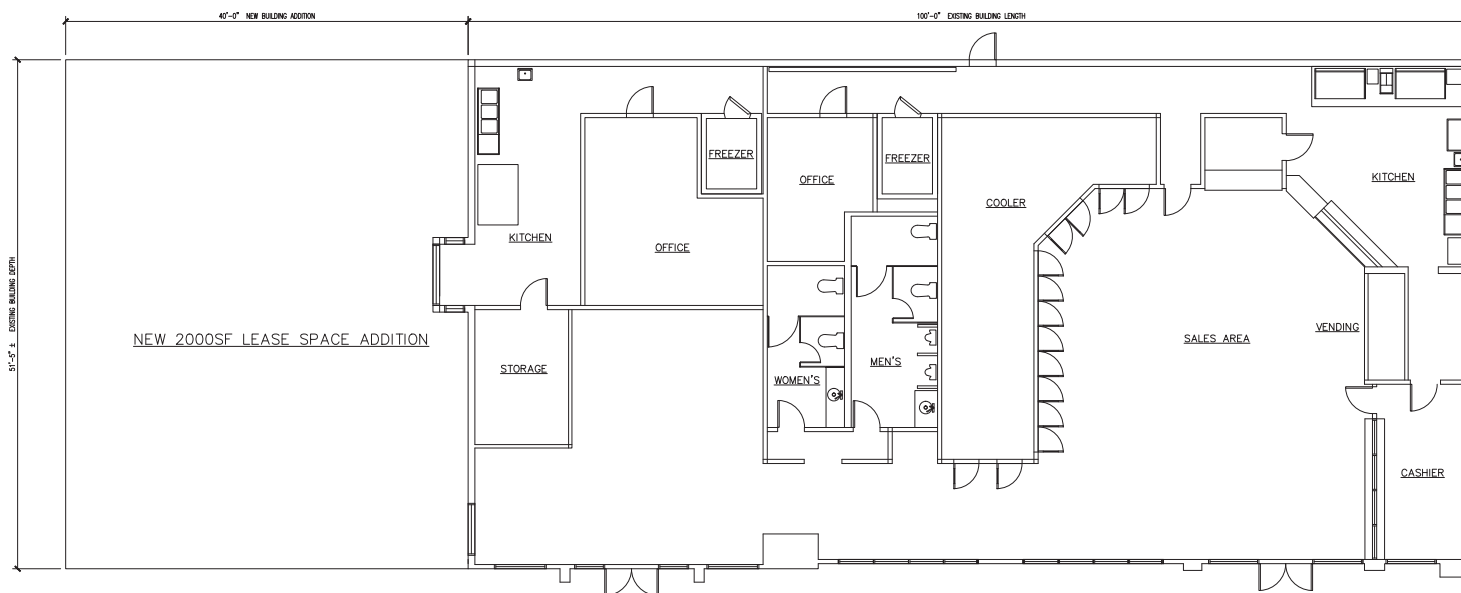
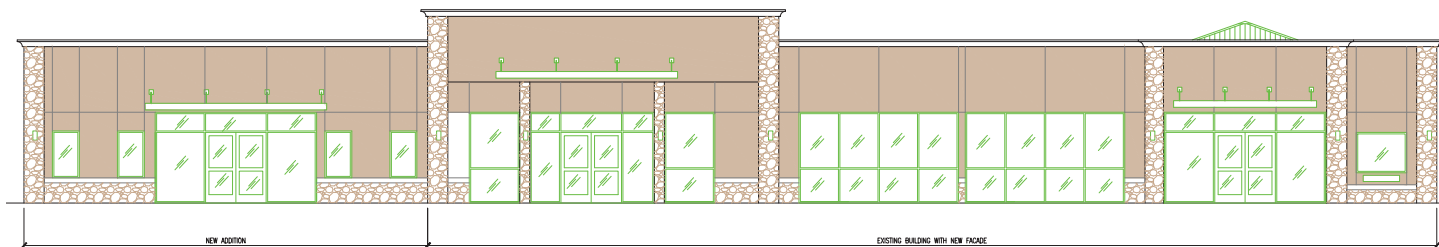
GAS / FILLING STATION





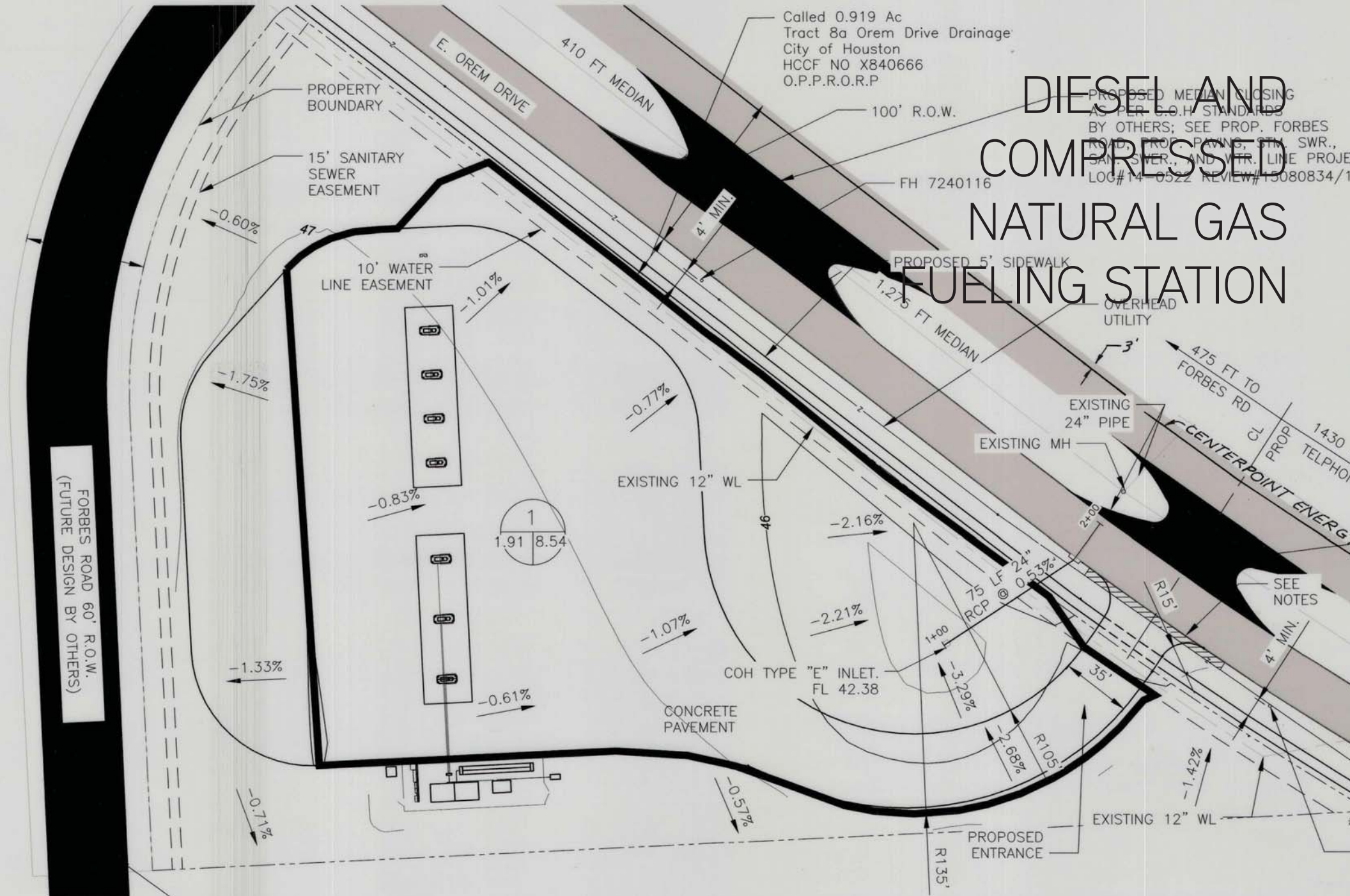
# COMPRESSED NATURAL GAS PUMP STATION







# DIESEL AND COMPRESSED NATURAL GAS FUELING STATION



FORBES ROAD 60' R.O.W.  
(FUTURE DESIGN BY OTHERS)

PROPOSED ROAD AS PER C.O.H STANDARDS  
BY OTHERS; SEE PROP. FORBES  
ROAD, PROP. PAVING, STM. SWR.,  
SAN. SWER., AND WTR. LINE PROJECT  
LOG#14-0522 REVIEW#15080834/14041222

# PROCESSING AND PACKAGING PLANTS / WAREHOUSES



# THE WAREHOUSES TECON-NIGERSTAR

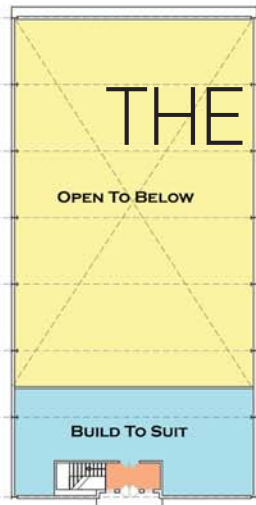
## ENERGY PARK

DESIGN FEATURES A 975 SQ. M WAREHOUSE/WORKSHOP SPACE THAT CAN ACCOMMODATE YOUR STAFF AND OPERATIONS AND A 130 SQ. M OFFICE SPACE AVAILABLE BY FLOOR BASIS WITH ALLOCATED WAREHOUSE SPACE AVAILABLE FOR EQUIPMENT AND INDUSTRIAL OPERATIONS.

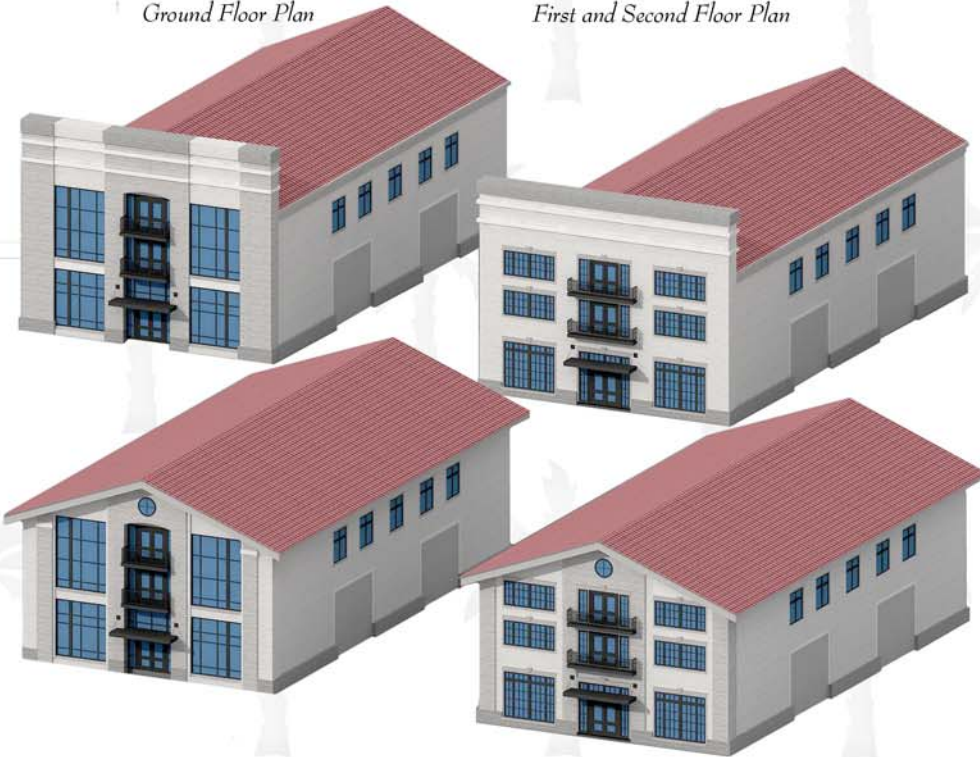
### Multi Tenant Warehouse



Ground Floor Plan



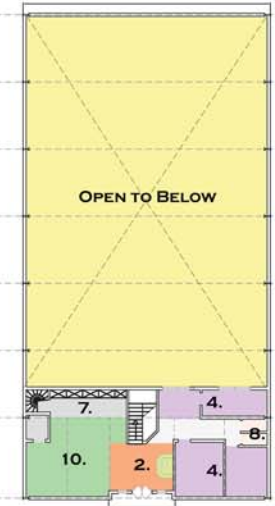
First and Second Floor Plan



Ground Floor Plan



First Floor Plan  
Single Tenant Warehouse



Second Floor Plan

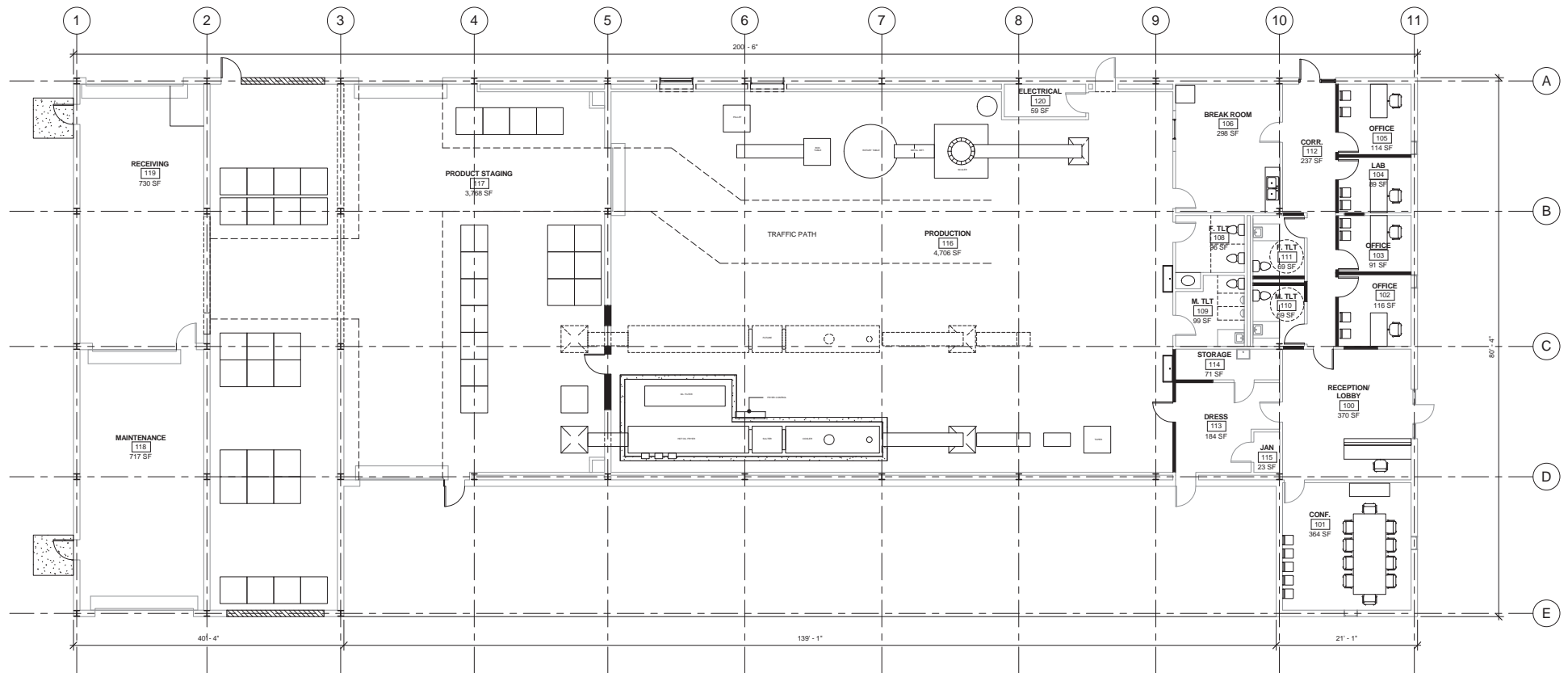
1. Warehouse
2. Reception
3. Meeting Room
4. Offices
5. Dining
6. Warehouse Manager
7. Storage
8. Toilets
9. Shower/Change/Toilet
10. Workstations



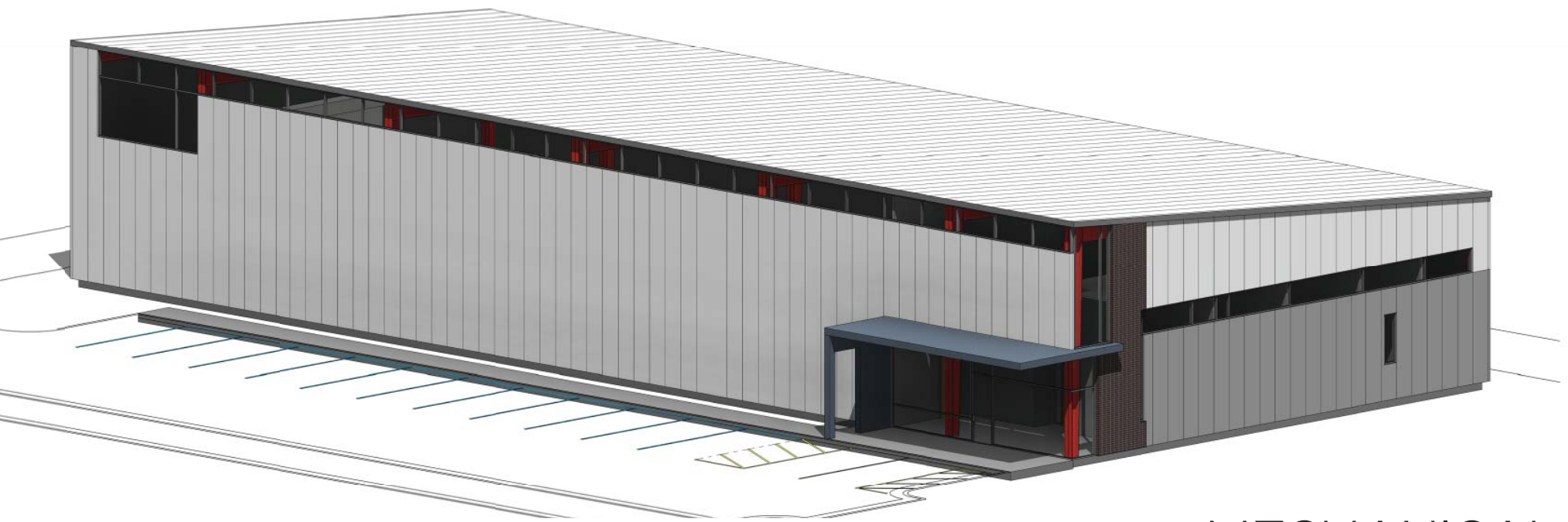
# HARDY FARMS PEANUT AND OIL ROASTING FACILITY AND WAREHOUSE

HAWKINSVILLE, GEORGIA  
12,700 SF

THE DESIGN INCLUDES THE RENOVATION OF AN EXISTING WAREHOUSE INTO A PEANUT AND OIL ROASTING FACILITY AND PROCESSING PLANT. DESIGN INCLUDES 2,000 SF OF ADMINISTRATION AND SUPPORT SPACE, 2,700 SF OF RECEIVING, STORAGE, AND MAINTENANCE SPACE, AND 10,000 SF OF ROASTING AND PACKAGING WAREHOUSE SPACE, AND PRODUCT STAGING.



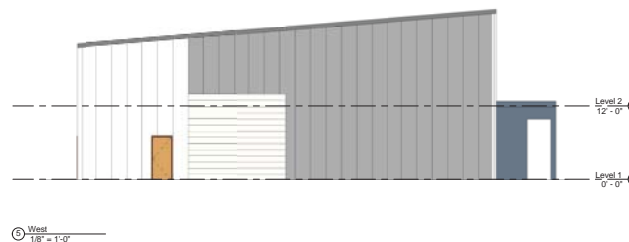




# MECHANICAL EQUIPMENT WAREHOUSE

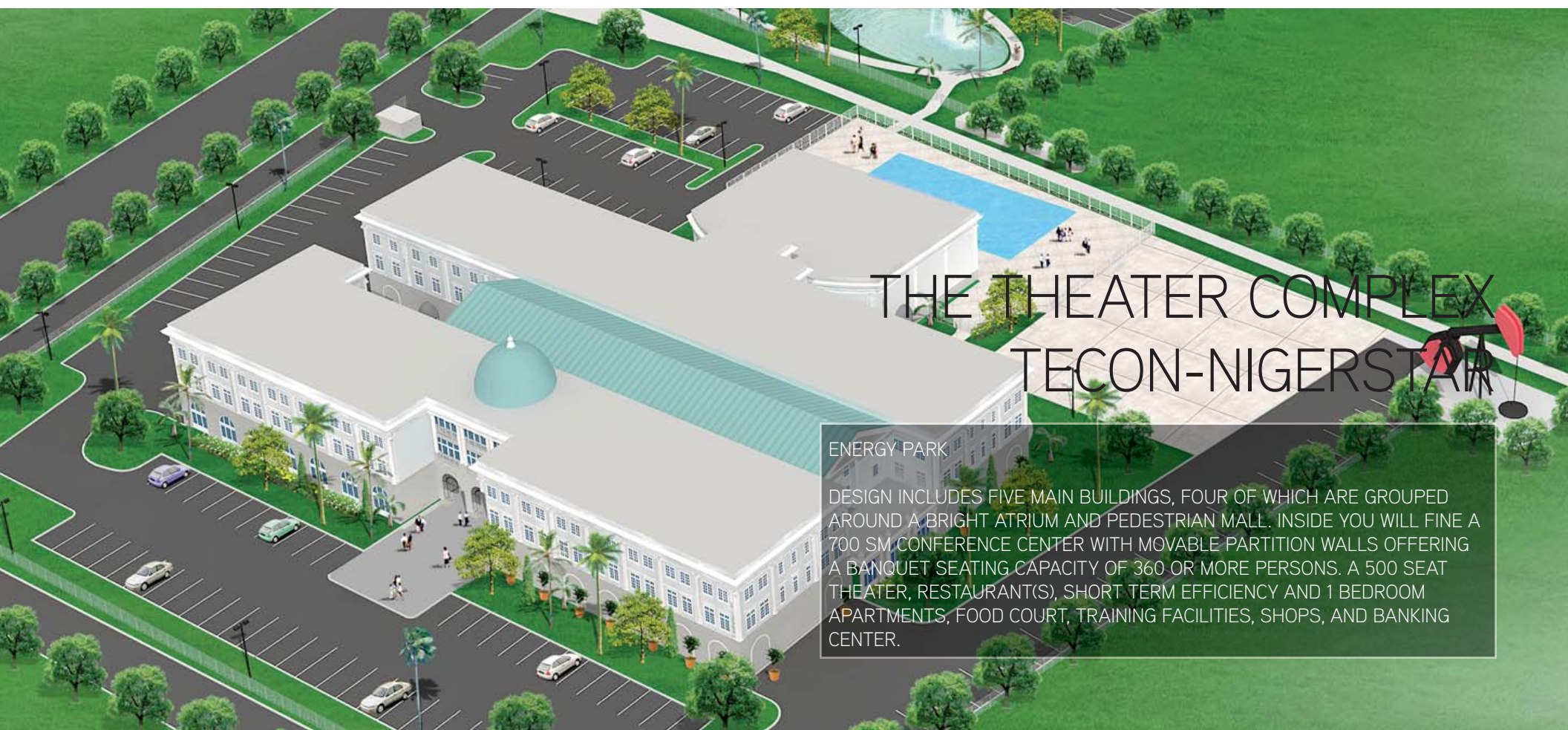
GRIFFIN, GA  
10,700 SF

CREATED USING PRE-MANUFACTURED STRUCTURAL BENT FRAMES AND VARIED COLOR METAL PANELS THIS DESIGN FEATURES 2,000 SF OF ADMINISTRATION AND OFFICE SPACE WITH REST ROOMS AND BREAK ROOMS AND OVER 8,000 SF OF OPEN WAREHOUSE SPACE. WAREHOUSE SPACE FEATURES CLERESTORY WINDOWS TO PASSIVELY AND ADEQUATELY DAYLIGHT THE SPACE DURING ACTIVE WORK HOURS LIMITING LESSENING THE ENERGY BURDEN.



# CONFERENCES AND SEMINAR CENTERS



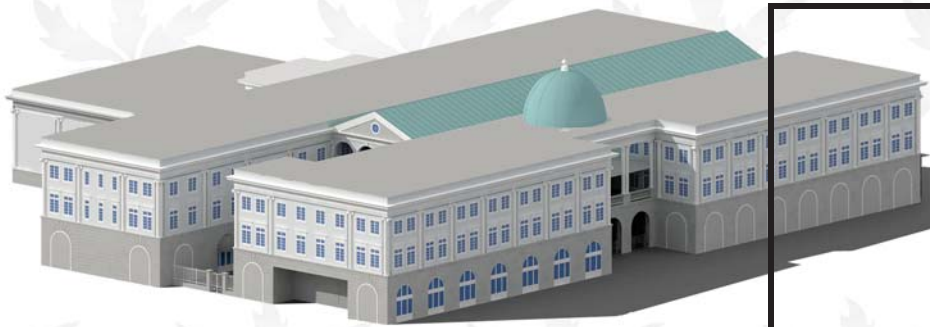


# THE THEATER COMPLEX TECON-NIGERSTAR

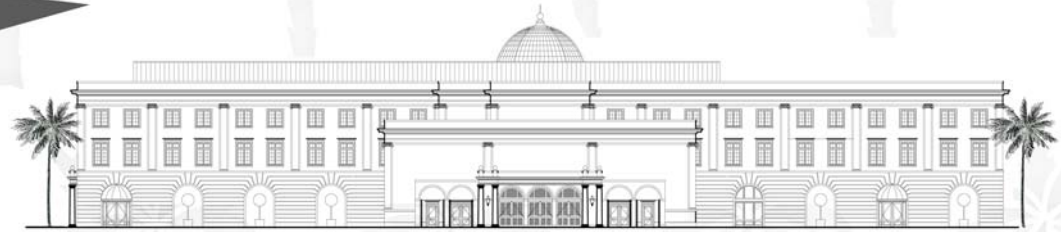
## ENERGY PARK

DESIGN INCLUDES FIVE MAIN BUILDINGS, FOUR OF WHICH ARE GROUPED AROUND A BRIGHT ATRIUM AND PEDESTRIAN MALL. INSIDE YOU WILL FIND A 700 SM CONFERENCE CENTER WITH MOVABLE PARTITION WALLS OFFERING A BANQUET SEATING CAPACITY OF 360 OR MORE PERSONS. A 500 SEAT THEATER, RESTAURANT(S), SHORT TERM EFFICIENCY AND 1 BEDROOM APARTMENTS, FOOD COURT, TRAINING FACILITIES, SHOPS, AND BANKING CENTER.



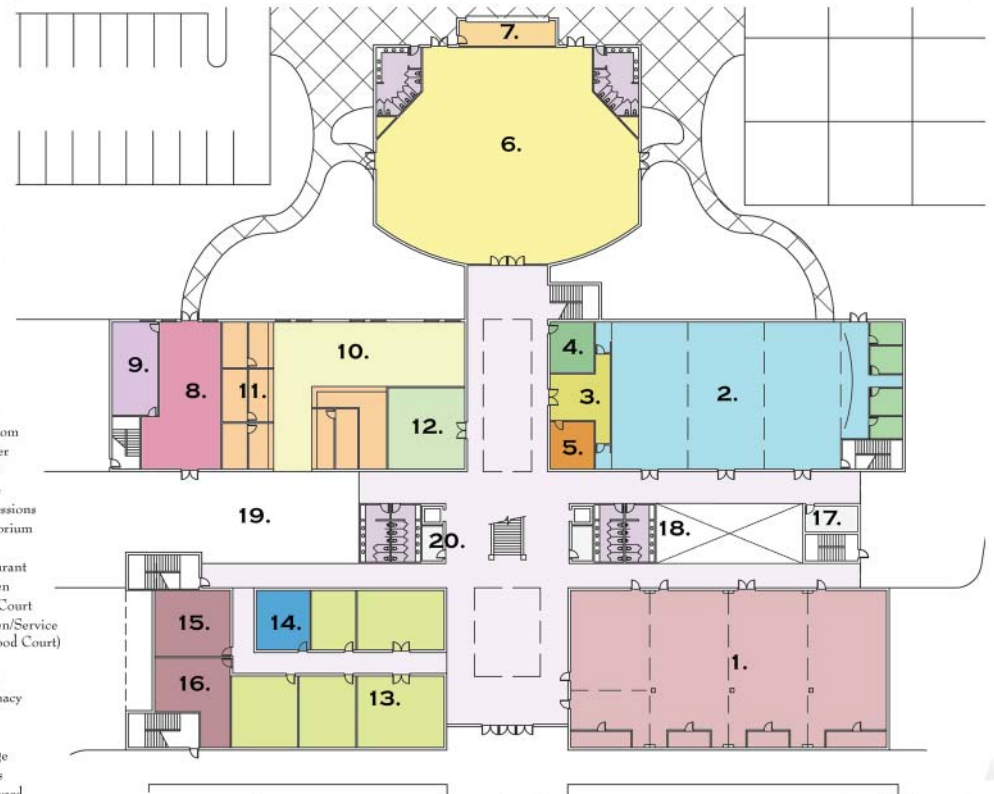
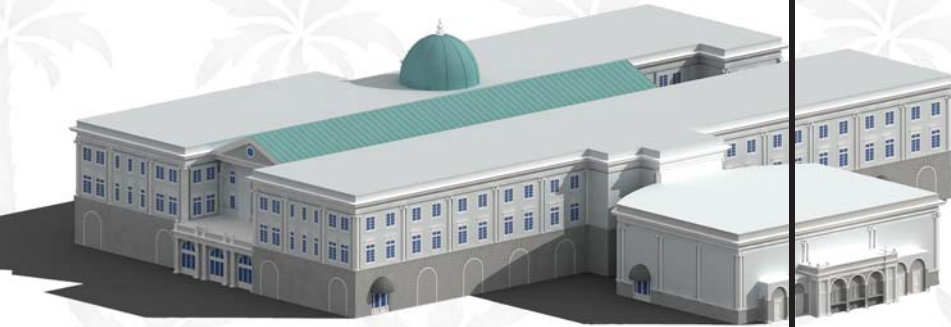


THE BACK OF THE PARK INCLUDES A 600 SEAT AUDITORIUM, ADJACENT TO A SWIMMING POOL WITH WET BAR, PERFECT FOR GATHERINGS, ON-SITE TRAINING, OR A LITTLE RECREATION.



*Rear (North) Elevation*

THE COMPLEX ALSO OFFERS 1,500 SQ.M, DEDICATED TRADE FARI EXHIBITION GROUNDS, WITH ADDITIONAL 1,400 SQ.M OF ASPHALT PARKING/DISPLAY AREA



1. Ballroom
2. Theater
3. Lobby
4. Office
5. Concessions
6. Auditorium
7. Bar
8. Restaurant
9. Kitchen
10. Food Court
11. Kitchen/Service (for Food Court)
12. Bank
13. Shops
14. Pharmacy
15. UPS
16. DHL
17. Storage
18. Toilets
19. Courtyard
20. Stairs/Electrical/Mechanical

*Ground Floor Plan*







# ALBANY STATE UNIVERSITY

ALBANY, GEORGIA

DESIGN OF THESE PERFORMING THEATER/AUDITORIUM WAS PART OF A COMPLEX THAT INCLUDED A NEW ACADEMIC FACILITY INTERNATIONAL TRADE CENTER. THE BUILDING CONSISTED OF FIVE WINGS: ACADEMIC, SCIENCE, HEALTH, THEATER, AND TRADE CENTER.



CONNECTED BY A NEW TWO  
STORY ATRIUM



GENERAL SEATING WITH BALCONY SEATING, FULL STAGE,  
DRESSING ROOMS, STORAGE, CATWALK, SOUND AND VIDEO  
BOOTH AND LIGHT PLATFORMS

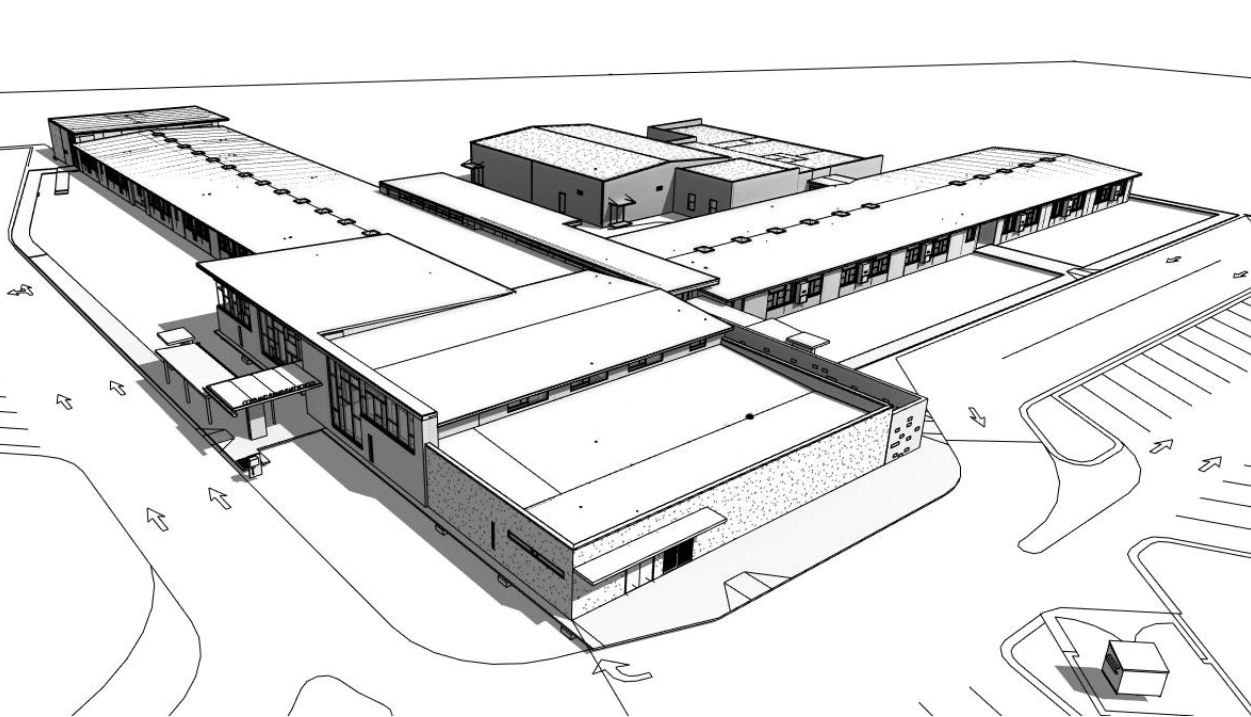
# PRIMARY SCHOOLS AND HIGHER EDUCATION



# COPELAND ELEMENTARY SCHOOL

AUGUSTA, GEORGIA  
15,000 SF

RENOVATION AND ADDITION TO THE ORIGINAL 1950'S MEDIA CENTER, GUIDANCE, AND ADMINISTRATION AREAS USING SUSTAINABLE DESIGN CRITERIA. NEW HIGH BAY CLERESTORY WINDOWS ALLOWING FOR AN ABUNDANCE OF NATURAL LIGHT COUPLED WITH UPDATED FINISHES AND MODERN TECHNOLOGIES. ALL TO CREATE MODERN AND COMFORTABLE SPACES TO ENCOURAGE GROWTH AND LEARNING.





# INGRAM PYE ELEMENTARY SCHOOL

MACON, GEORGIA  
48,150 SF

A SOMEWHAT TRADITIONAL BUILDING THAT WAS REFLECTIVE OF A "COUNTRY DAY SCHOOL" WITH INTERNALLY MODERN ATTRIBUTES. DESIGN INCLUDES NEW ADMINISTRATION, GENERAL CLASSROOMS, LABORATORIES, CAFETERIA, MAIN ENTRANCE LOBBY AND GENERAL USE CORRIDORS WERE ALL DESIGNED TO TAKE ADVANTAGE OF SUSTAINABLE CRITERIA AND RE-PURPOSING OF DEMOLISHED CONCRETE, MASONRY MATERIALS, AND RECYCLABLE BUILDING MATERIALS. THE SCHOOL WAS DESIGNED TO BE ONE OF THREE LANDMARKS BUILDINGS TO SERVE AS A GATEWAY TO THE CITY OF MACON.

BUILDING OF AMERICA GOLD  
MEDAL AWARD 2010





A photograph of a modern hallway. The left wall is covered in custom glazed paint and textures, with overhead lights creating a rainbow-like effect. The right wall features custom design millwork, including tall wooden cabinets and drawers. The floor is covered in a green carpet. The ceiling has a grid pattern with recessed lights.

CUSTOM GLAZED PAINT AND TEXTURES WITH OVERHEAD LIGHTS AND LENSES TO CREATE ART WALL FEATURE

# GA STATE UNIVERSITY COLLEGE OF EDUCATION

ATLANTA, GA

\$150,000

4,300 GSF RENOVATION AND MODERN SHOWCASE AND MATERIAL, COLOR, AND LIGHT  
WITHIN THE PRESTABLISHED BUDGET PARAMETERS

DESIGN BUILD - 6 MONTHS FROM START OF DESIGN TO COMPLETION OF CONSTRUCTION

CUSTOM DESIGN MILLWORK





FLOOR COVERINGS TRANSCEND  
THRESHOLDS TO EXPERIENTIALLY  
EXPAND SPACES



INDIVIDUAL  
PAINT SCHEMES  
IN EACH OFFICE



OBSOLETE GLASS FOR  
DAYLIGHT SHARING  
WITHIN CONSTRAINED  
SPACES WITHOUT  
SACRIFICING PRIVACY







# CLASSROOM ADDITION, PAULDING COUNTY RYCD

DALLAS, GEORGIA  
6,500 SF

CLASSROOM ADDITION TO A YOUTH DETENTION CENTER DESIGNED TO SERVE CHILDREN AGES 12 TO 18, INCLUDING STUDENTS WITH SPECIAL NEEDS. INCLUDES 5 CLASSROOMS, TWO OUTDOOR CLASSROOMS, AND ONE OPEN MEETING AREA.

DESIGN OBJECTIVE TO INCLUDE NATURAL DAYLIGHT, CREATIVE USE OF FINISHES TO ACHIEVE DURABILITY AND SECURITY CREATING A WELCOMING ENVIRONMENT OF LEARNING.

