

Navigation

Search

Languages

[MSC Home \(/portal/\)](#)

[MSC Search by Address \(/portal/search\)](#)

[MSC Search All Products \(/portal/advanceSearch\)](#)

[MSC Products and Tools \(/portal/resources/productsandtools\)](#)

[Hazus \(/portal/resources/hazus\)](#)

[LOMC Batch Files \(/portal/resources/lornc\)](#)

[Product Availability \(/portal/productAvailability\)](#)

[MSC Frequently Asked Questions \(FAQs\) \(/portal/resources/faq\)](#)

[MSC Email Subscriptions \(/portal/subscriptionHome\)](#)

[Contact MSC Help \(/portal/resources/contact\)](#)

Enter an address, place, or coordinates: ?

2441 viscount row, orlando, fl 32809

Search

Whether you are in a high risk zone or not, you may need [flood insurance \(https://www.fema.gov/national-flood-insurance-program\)](https://www.fema.gov/national-flood-insurance-program) because most homeowners insurance doesn't cover flood damage. If you live in an area with low or moderate flood risk, you are 5 times more likely to experience flood than a fire in your home over the next 30 years. For many, a National Flood Insurance Program's flood insurance policy could cost less than \$400 per year. Call your insurance agent today and protect what you've built.

Learn more about [steps you can take \(https://www.fema.gov/what-mitigation\)](https://www.fema.gov/what-mitigation) to reduce flood risk damage.

Search Results—Products for ORANGE COUNTY UNINCORPORATED AREAS

Show ALL Products » (<https://msc.fema.gov/portal/availabilitySearch?addcommunity=120179&communityName=ORANGE COUNTY UNINCORPORATED AREAS#searchr>)

The flood map for the selected area is number **12095C0410F**, effective on **09/25/2009** ?

DYNAMIC MAP



MAP IMAGE



<https://msc.fema.gov/portal/downloadProduct?>

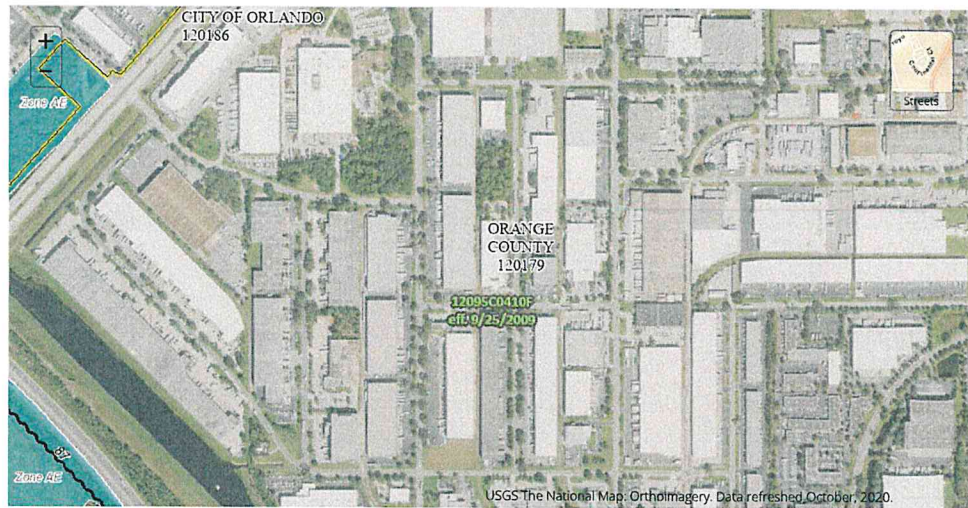
[productTypeID=FINAL_PRODUCT&productSubTypeID=FIRM_PANEL&productID=12095C0410F](#)

Changes to this FIRM ?

- Revisions (5)
- Amendments (59)
- Revalidations (6)

You can choose a new flood map or move the location pin by selecting a different location on the locator map below or by entering a new location in the search field above. It may take a minute or more during peak hours to generate a dynamic FIRMette. If you are a person with a disability, are blind, or have low vision, and need assistance, please contact a map specialist (<https://msc.fema.gov/portal/resources/contact>).

Go To NFHL Viewer » (<https://hazards-fema.maps.arcgis.com/apps/webappviewer/index.html?id=8b0adb51996444d4879338b5529aa9cd&extent=-81.425339496422>)



<p>PIN</p> <ul style="list-style-type: none"> Approximate location based on user input and does not represent an authoritative property location <p>MAP PANELS</p> <ul style="list-style-type: none"> Selected FloodMap Boundary Digital Data Available No Digital Data Available Unmapped <p>OTHER AREAS</p> <ul style="list-style-type: none"> Area of Minimal Flood Hazard Zone X Effective LOMIs Area of Undetermined Flood Hazard Zone D Otherwise Protected Area Coastal Barrier Resource System Area 	<p>SPECIAL FLOOD HAZARD AREAS</p> <ul style="list-style-type: none"> Without Base Flood Elevation (BFE) Zone A & A99 With BFE or Depth Regulatory Floodway Zone AE, AO, AH, VE, AR <p>OTHER AREAS OF FLOOD HAZARD</p> <ul style="list-style-type: none"> 0.2% Annual Chance Flood Hazard. Areas of 2% annual chance flood with average depth less than one foot or with drainage areas of less than one square mile Zone X Future Conditions 1% Annual Chance Flood Hazard Zone X Area with Reduced Flood Risk due to Levee. See Notes. Zone X Area with Flood Risk due to Levee Zone D 	<p>OTHER FEATURES</p> <ul style="list-style-type: none"> Cross Sections with 1% Annual Chance Water Surface Elevation Coastal Transect Base Flood Elevation Line (BFE) Line of Study Jurisdiction Boundary Coastal Transect Baseline Profile Baseline Hydrographic Feature <p>GENERAL STRUCTURES</p> <ul style="list-style-type: none"> Channel, Culvert, or Storm Sewer Levee, Dike, or Floodwall
--	--	---

Share This Page.

[Home \(/www.fema.gov/\)](http://www.fema.gov/) [Download Plug-ins \(/www.fema.gov/download-plug-ins\)](http://www.fema.gov/download-plug-ins/) [About Us \(/www.fema.gov/about-agency\)](http://www.fema.gov/about-agency/) [Privacy Policy \(/www.fema.gov/privacy-policy\)](http://www.fema.gov/privacy-policy/) [FOIA \(/www.fema.gov/foia\)](http://www.fema.gov/foia/) [Office of the Inspector General \(/www.oig.dhs.gov\)](http://www.oig.dhs.gov/) [Strategic Plan \(/www.fema.gov/fema-strategic-plan\)](http://www.fema.gov/fema-strategic-plan/) [Whitehouse.gov \(/www.whitehouse.gov\)](http://www.whitehouse.gov/) [DHS.gov \(/www.dhs.gov\)](http://www.dhs.gov/) [Ready.gov \(/www.ready.gov\)](http://www.ready.gov/) [USA.gov \(/www.usa.gov\)](http://www.usa.gov/) [DisasterAssistance.gov \(/www.disasterassistance.gov\)](http://www.disasterassistance.gov/)



<https://www.oig.dhs.gov/hotline>