

City of Stratford Recycle

The City of Stratford offers a range of recycling services including blue bags for paper recycling, tan dumpsters for cardboard recycling and green dumpsters for grass clippings. The City of Stratford started its recycling program in 1998 and has been a member of the PRPC's Recycling Community since 2001. We will continue to serve our community by offering the city's residents a way to help keep our community clean and reduce our environmental impact.

In 2021 the City of Stratford Recycled over 40 tons of material saving over 146 cubic yards of landfill space.

You can help us to continue offering these services by following the list of what is acceptable and what is not. More information is located on this page after our operating hours. If you observe repeated trash problems or illegal dumping (trash from outside city limits or household trash in green or tan dumpsters) please contact City Hall at 806-366-5581.

Location:

Turn west on County Road M (South 4th street in town) at the Dollar General. The turn off to the Recycle Center is right by the railroad tracks on the west side.

Hours

Monday through Thursday

11 am to Noon and 4 to 5 pm

Friday

11 am to Noon and 4 to 4:30 pm

Saturday

10 am to 2 pm

Sundays and Holidays

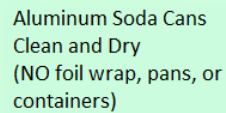
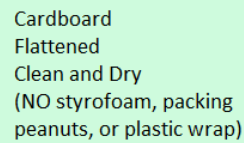
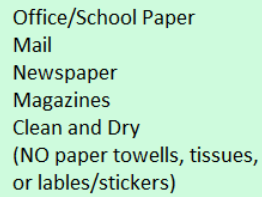
Closed

Blue Bag Information

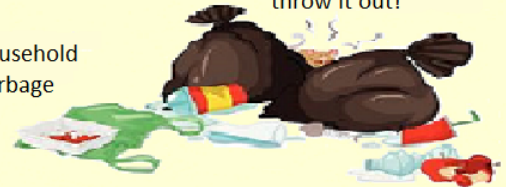
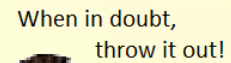
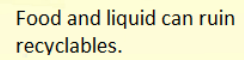


- Blue and Green Recycle bags are for your paper recycling convenience. Please do not put trash in the bags. Only computer/school paper, mail, newspaper and magazines are allowed.
- **No** Kleenex, paper towels, tissue paper, wax paper, stickers, labels or hard back books.
- **No** food items of any kind; no candy bar wrappers, cups, bottles or plates. Please do not use bags as a trash can, if this happens your bag will be pulled and not replaced.
- **When in doubt, throw it out! Food and liquids can ruin an entire bag of recycling.**

Can there be a link to open the following flyers on a new page? Or they could go at the end of this page. I have English and Spanish but they take up a lot of room.



Trash



City of Stratford Recycle

<https://stratfordtx.us/>



806-366-5581

 <h2 style="color: green; text-align: center;">Materiales Reciclables</h2> <div style="display: flex; justify-content: space-around; align-items: center;">  <div> <p>Papel de oficina Correspondencia Periodico Revistas</p> </div> </div> <div style="display: flex; justify-content: space-around; align-items: center;">  <div> <p>Carton aplanado (no espuma de poliestireno o ningun envoltura de plastico)</p> </div> </div> <div style="display: flex; justify-content: space-around; align-items: center;">  <div> <p>Latas de aluminio (no papel o charolas de aluminio)</p> </div> </div>	<h2 style="text-align: center;">Basura</h2> <div style="display: flex; justify-content: space-around; align-items: center;">  <div> <p>Comida y liquidos pueden arruinar los materiales reciclables.</p> <p>En caso de duda, tiralo a la basura!</p> </div> </div> <p style="text-align: center;">Basura Domestica</p> 
<h1 style="color: blue;">City of Stratford Recycle</h1> <div style="display: flex; justify-content: space-between; align-items: center;"> <div> https://stratfordtx.us/ </div>  <div> <p>806-366-5581</p> </div> </div>	

Dumpster Information

- Brown/Black Dumpster - Household Trash
- Green Dumpster – Grass Clippings
- Tan Dumpster – Cardboard

Additional Information

- **Brown dumpsters** in the alley are for **household trash**. Please no large items, wood, concrete, stone, tires or metal as these will damage the dumpsters during pick-up and the mechanism and hydraulic cylinders in the trash trucks.
- **Green dumpsters** in the alley are for **grass only!** Please ensure that **no plastic bags, household trash or tree limbs** get into the green dumpsters and if your kids take out the trash, please tell them also.
- Cardboard recycling is available in the **tan dumpsters**. Please break down the boxes and flatten them. **No household trash, styrofoam, plastic, paper, or metal.**
- **Always** close the lids on dumpsters please!
- There are also green recycling containers located outside the gate at the recycle center with labels showing what is accepted.
- Using green or tan dumpsters for household or business garbage constitutes Theft of Service and Illegal Dumping. **Violators will be identified and can be prosecuted under Texas Penal Code 31.04, Texas Health and Safety Code 365.012, or the City Ordinance Code 6.03.01 and 1.01.009 which states that violators can be fined up to \$500 for illegal dumping.**