



OFFSHORE MARINE CONTRACTORS, INC.

Toll Free: 877-632-7927 | Local: 985-632-7927

- [Home](#)
- [Liftboat Overview](#)
- [Liftboat Calc](#)
- [Liftboat Fleet](#)
- [Safety](#)
- [Gallery](#)
- [Employment](#)
- [Announcements](#)
- [Contact Us](#)

Main Office

133 West 113th St.
Cut Off, LA 70345
Phone: 985-632-7927
Fax: 985-632-3704

Tram Shipyard

24964 Hwy. 1
Golden Meadow, LA 70357



L/B Olivia Grace



Dimensions

- Length (overall): 115'0"
- Beam (Overall): 74'0"
- Depth (Barge Only): 10'
- Design Draft: 7.65'

Hull Characteristics

- Tonnage: Under 200 tons
- Usable Deck Area: Approx 5,000 Sq Ft
- Deck Load: 760,000 lbs

Legs

Capacities

- Fuel: 9,730 US Gal
- Potable Water: 15,194 US Gal

Engines

- Main: 2 ea CAT 3412 720 bhp
- Generators: 2 ea CAT 3304 199Kw
- Est. Speed: 6 Kts in Max 5ft Seas

Jacking

- Max Water Depth: 160' with 15' air gap
- Jacking Speed: 8ft per minute
- Max Sea Conditions: 5ft Seas

- Number: 3
- Length: 200ft
- Diameter: 66'

Misc. Equipment

- Sewerage: Seahorse
- Air Compressor: 2ea 80 gal Receivers

Cranes

- Main: 125 ton w/ 100' boom
- Aux: 30 ton w/ 56-100' telescoping boom

Certifications

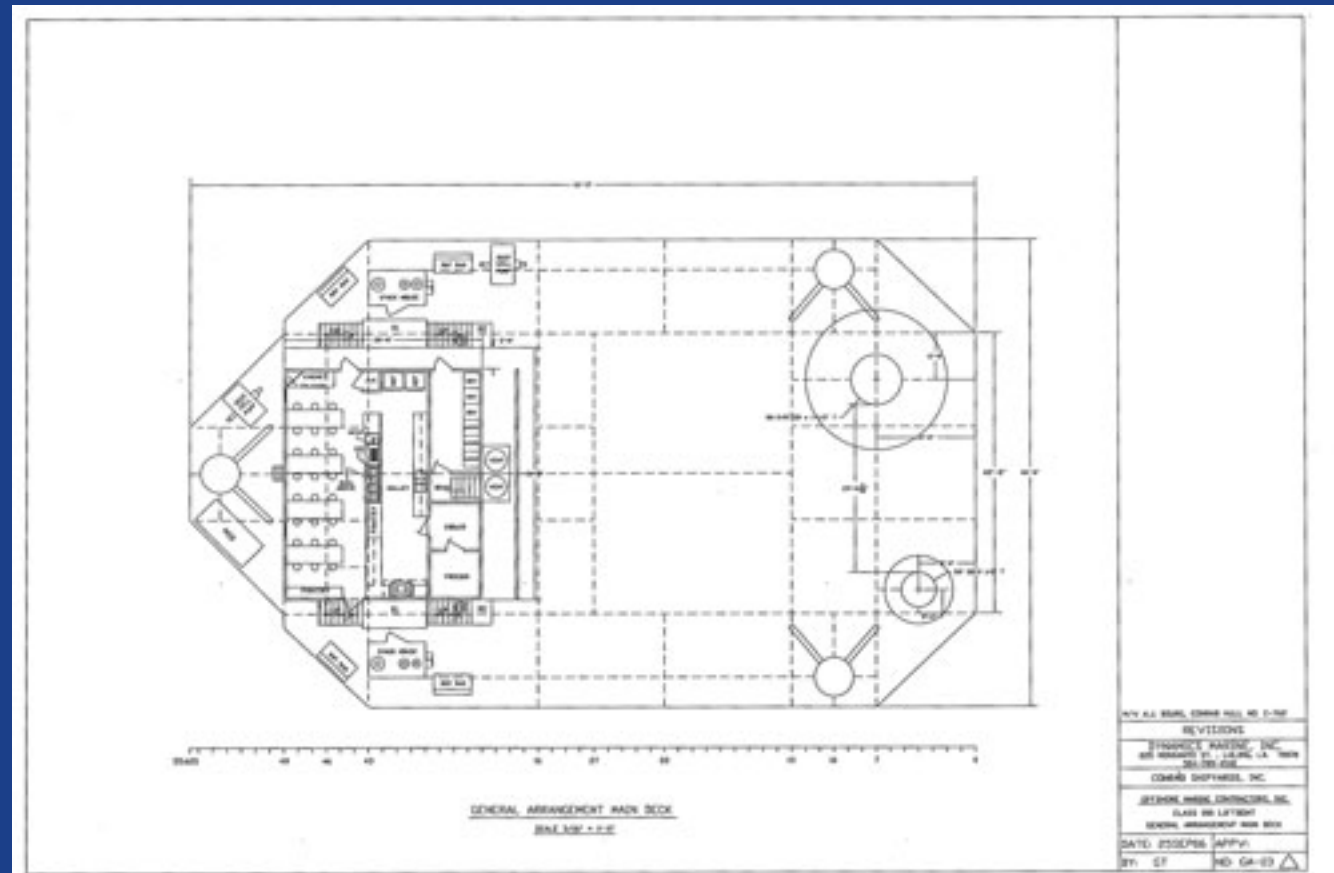
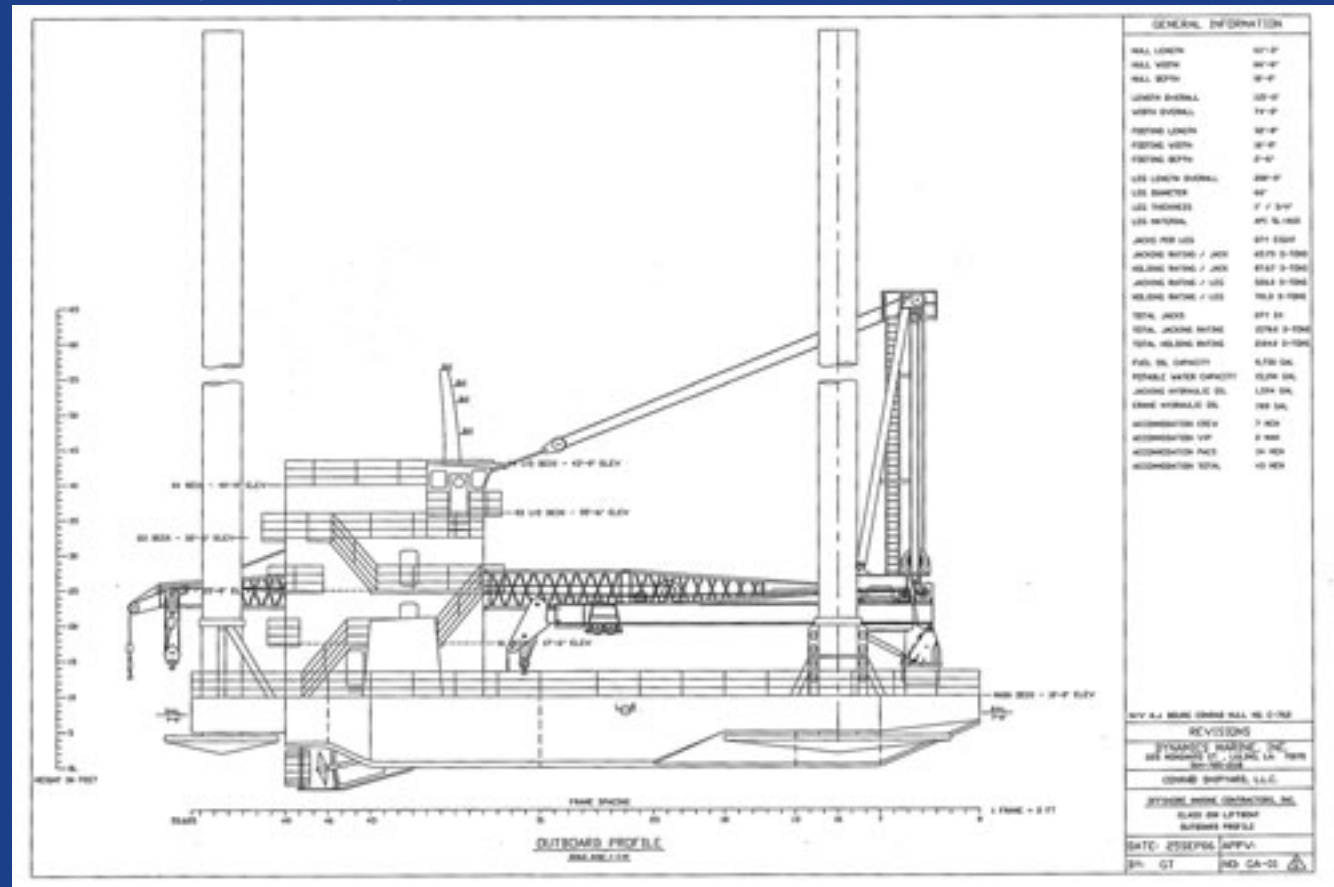
- U.S. Coast Guard 46CFR Subchapter "L"
- Lloyds Load Line

Living Quarters

- Berths: 36 (Not Including Crew)
- Crew Berths: 7
- VIP Staterooms: 2Ea with desk & head

Drawings

Click on any of the images below to view them full size.





OFFSHORE MARINE CONTRACTORS, INC.

Toll Free: 877-632-7927 | Local: 985-632-7927

- [Home](#)
- [Liftboat Overview](#)
- [Liftboat Calc](#)
- [Liftboat Fleet](#)
- [Safety](#)
- [Gallery](#)
- [Employment](#)
- [Announcements](#)
- [Contact Us](#)

Main Office

133 West 113th St.
Cut Off, LA 70345
Phone: 985-632-7927
Fax: 985-632-3704

Tram Shipyard

24964 Hwy. 1
Golden Meadow, LA 70357



L/B Olivia Grace



200ft Class Liftboat

L/B Olivia Grace Main Crane Load Chart CRANE MODEL: L200-100

Reach (ft)	Boom Angle (Degrees)	Static Load Line (lbs)	Dynamic Load (lbs)	Auxiliary Line (lbs)
18	80	250,000	220,000	10,000
20	78	250,000	216,796	10,000
25	76	250,000	187,731	10,000
30	73	230,000	156,972	10,000
35	70	200,013	133,342	10,000
40	66	173,429	115,619	10,000

45	63	152,752	101,835	10,000
50	60	136,211	90,807	10,000
55	57	122,677	81,784	10,000
60	53	111,398	74,266	10,000
65	49	101,855	67,904	10,000
70	46	93,676	62,904	10,000
75	41	86,586	57,724	10,000
80	37	80,383	53,724	10,000
85	32	74,910	49,940	10,000
90	26	70,045	46,697	10,000
95	18	65,692	43,795	10,000
100	0	61,774	41,183	10,000

Maximum Overturning Moment (ft-lbs): 14,590,302

Corresponding Axial Force (lbs): 501,548

Maximum Axial Force (lbs): 541,522

Corresponding Moment (ft-lbs): 8,223,120

Basic Crane Weight (lbs): 101,522

Center of Gravity: 16.59

In accordance with API-2C, values shown are actual hook load (weight of block and hook excluded).

Load line: (8 part line): 1 1/4" Dyform 34LR 39,280lbs working strength, 196,400lbs breaking strength.

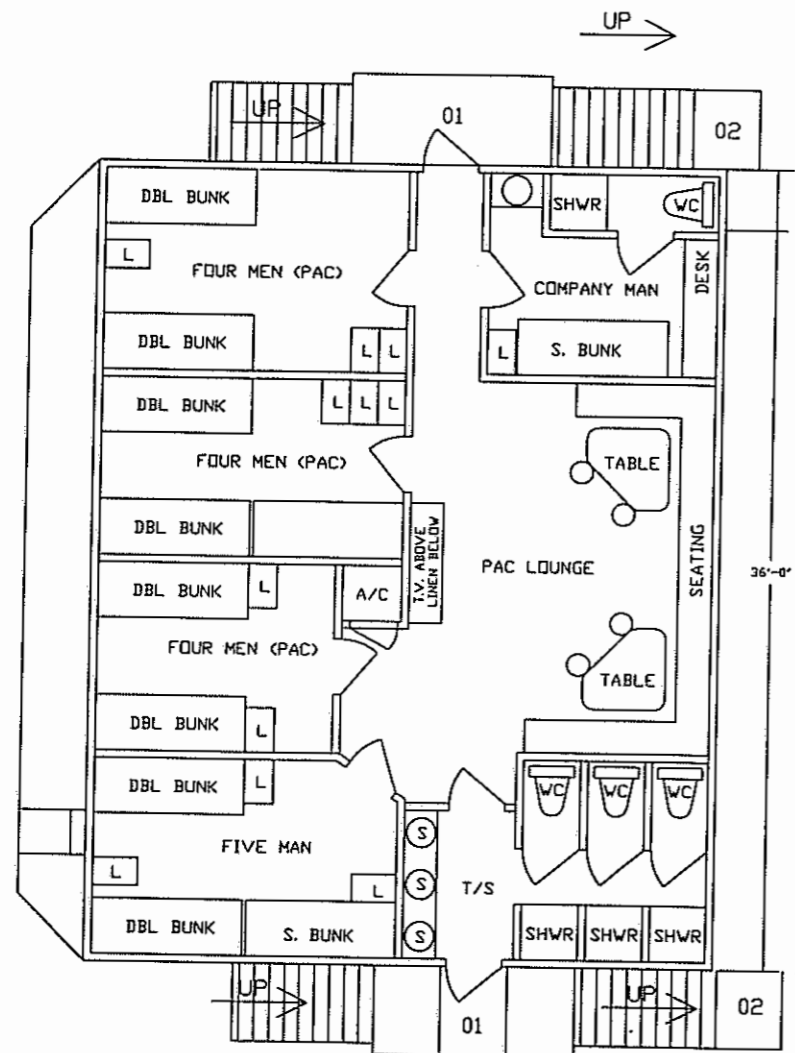
Fast line: (1 part line): 3-4" Dyform 18; 64,800lbs breaking strength, 12,960lbs working strength.

Static load = 1.5 x dynamic load

Pedestal reactions are based on three times the dynamic load plus the dead load

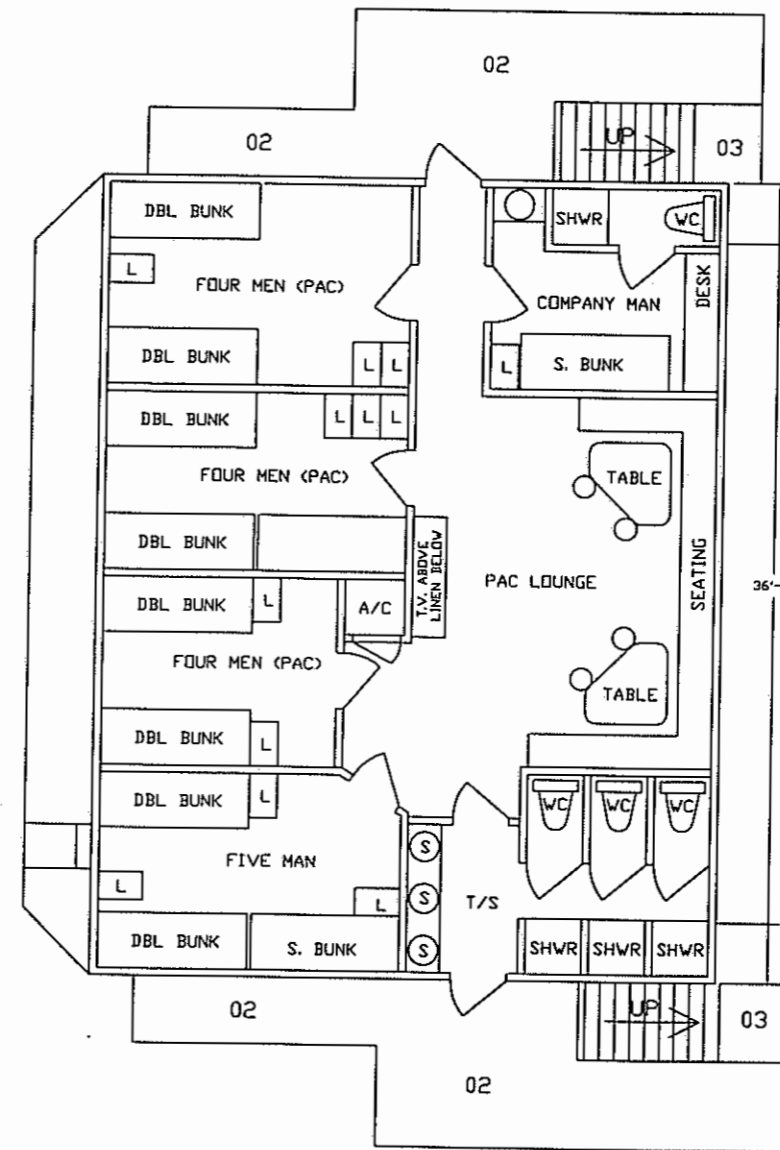
L/B Olivia Grace Auxiliary Crane Load Chart T60-56-100 LOAD CHART ((70 ft. Extended))

Reach (ft)	Boom Angle (degrees)	Dynamic Load Line (lbs)	Static Load Line (lbs)
10	81.5	42600	54600
15	77.5	32300	49150
20	73.5	25200	38500
25	69	20300	31150
30	64.5	17050	26275
35	60	14750	22825
40	55.5	13050	20275
45	50	11500	17950
50	45	10400	16300
55	38.5	9350	14725
60	31	8450	13375
65	22	7600	12100
70	0	6000	9700



GENERAL ARRANGEMENT 01 LEVEL

SCALE 1/4" = 1'-0"



GENERAL ARRANGEMENT 02 LEVEL

SCALE 1/4" = 1'-0"

M/V A.J. BOURG, CONRAD HULL NO. C-762

REVISIONS

DYNAMICS MARINE, INC.
225 MONSANTO ST., LULING, LA. 70070
504-785-2118

CONRAD SHIPYARDS, INC.

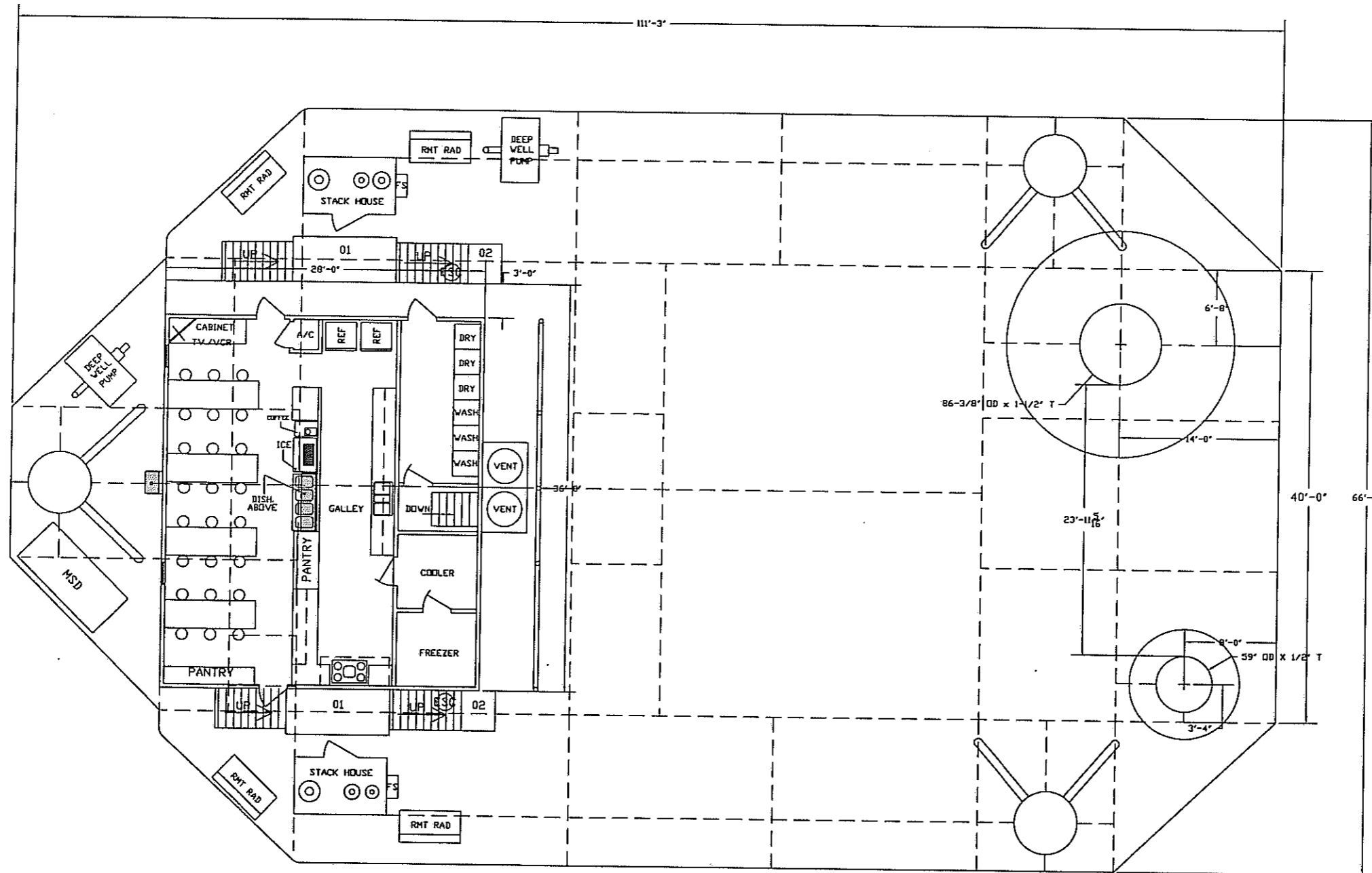
OFFSHORE MARINE CONTRACTORS, INC.

CLASS 200 LIFTBOAT

GENERAL ARRANGEMENT 01 AND 02 DECKS

DATE: 23JUL01 APPV:

BY: GILLY NO: GA-04



GENERAL ARRANGEMENT MAIN DECK

SCALE 3/16" = 1'-0"

M/V A.J. BOURG, CONRAD HULL NO. C-762

REVISIONS

DYNAMICS MARINE, INC.
225 MONSANTO ST., LULING, LA. 70070
504-785-2118

CONRAD SHIPYARDS, INC.

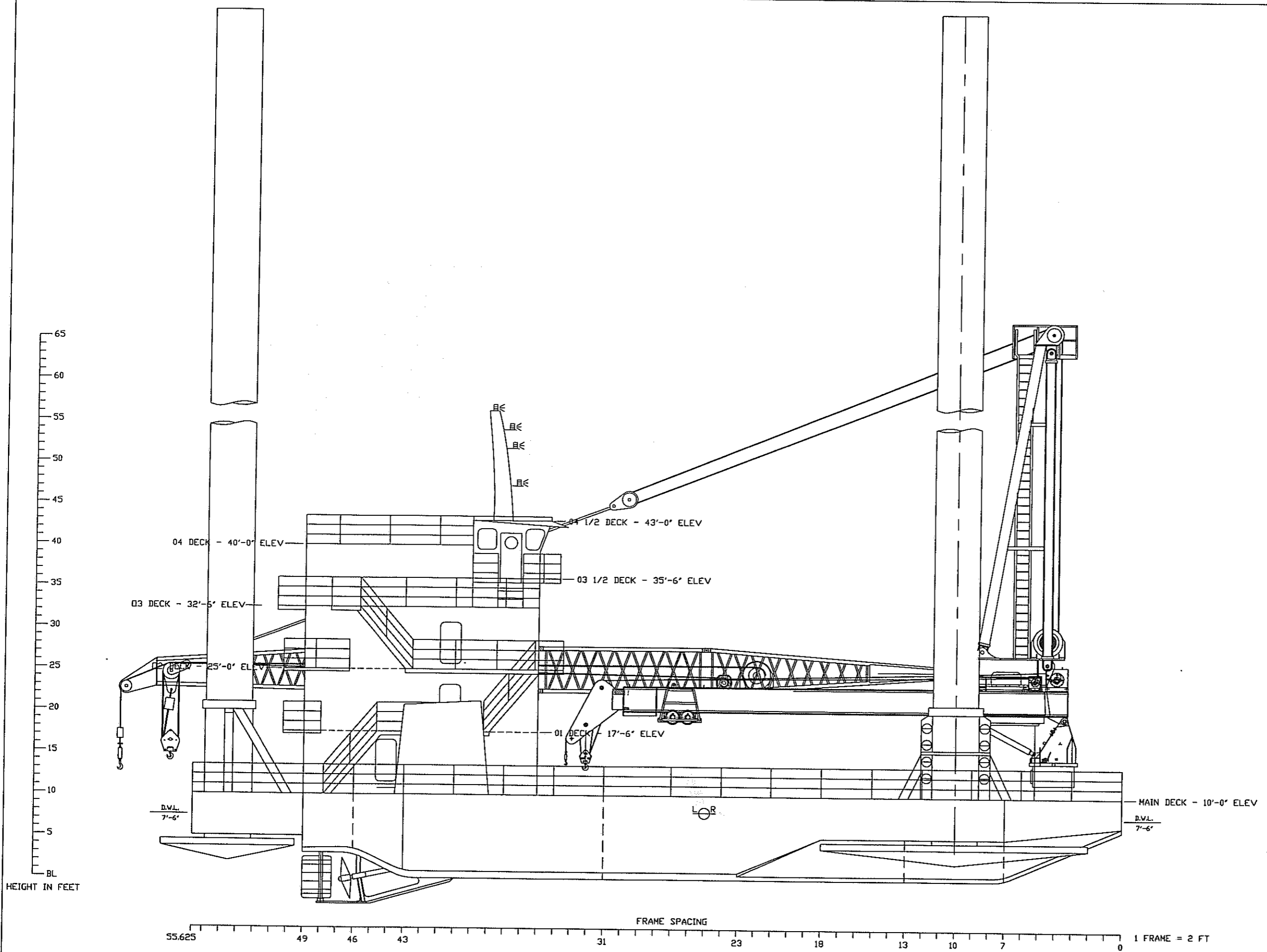
OFFSHORE MARINE CONTRACTORS, INC.

CLASS 200 LIFTBOAT
GENERAL ARRANGEMENT MAIN DECK

DATE: 25SEP06 APPV:

BY: GT

NO: GA-03 



OUTBOARD PROFILE
SCALE 3/16" = 1'-0"

GENERAL INFORMATION

HULL LENGTH	111'-3"
HULL WIDTH	66'-6"
HULL DEPTH	10'-0"
LENGTH OVERALL	115'-0"
WIDTH OVERALL	74'-0"
FOOTING LENGTH	32'-0"
FOOTING WIDTH	16'-0"
FOOTING DEPTH	2'-6"
LEG LENGTH OVERALL	200'-0"
LEG DIAMETER	66"
LEG THICKNESS	1" / 3/4"
LEG MATERIAL	API 5L-X65
JACKS PER LEG	QTY EIGHT
JACKING RATING / JACK	65.75 S-TONS
HOLDING RATING / JACK	87.67 S-TONS
JACKING RATING / LEG	526.0 S-TONS
HOLDING RATING / LEG	701.3 S-TONS
TOTAL JACKS	QTY 24
TOTAL JACKING RATING	1578.0 S-TONS
TOTAL HOLDING RATING	2104.0 S-TONS
FUEL OIL CAPACITY	9,730 GAL
POTABLE WATER CAPACITY	15,194 GAL
JACKING HYDRAULIC OIL	1,594 GAL
CRANE HYDRAULIC OIL	789 GAL
ACCOMMODATION CREW	7 MEN
ACCOMMODATION VIP	2 MAN
ACCOMMODATION PACS	34 MEN
ACCOMMODATION TOTAL	43 MEN

M/V A.J. BOURG CONRAD HULL NO. C-762

REVISIONS
DYNAMICS MARINE, INC.
225 MONSANTO ST., LULING, LA. 70070
504-785-2118

CONRAD SHIPYARD, L.L.C.

OFFSHORE MARINE CONTRACTORS, INC.
CLASS 200 LIFTBOAT
OUTBOARD PROFILE

DATE: 25SEP06 APPV:
BY: GT NO: GA-01



OLIVIA GRACE
REG. 11111111

OMG

OMG





