

FALL 2024 + SPRING 2025



ALLIE



Modified racer back. Fitted bodice.
Spread collar. Front zip placket.

XS - XL

\$49.50 wholesale, \$99 retail

available in all prints & solids



BELLA



Modified racer back. Fitted bodice.
Mandarin collar. Front zip placket.

XS - XL

\$49.50 wholesale, \$99 retail

available in all prints & solids



LUCY

Fitted bodice. Stand-up collar.
Raglan cap sleeve. Front zip placket. UPF 50.

S - XXL

\$55.00 wholesale, \$110 retail

available in all prints & solids

IZZY - available 10/1

Modified racer back. Fitted bodice. Mandarin collar. Front zip placket. Contrasting zipper and binding.

XS - XL

\$49.50 wholesale, \$99 retail

available in shown color ways



Black-White



Capri-Punch



Capri-Grasshopper



Navy-Capri



Navy-Cherry Tomato



Navy-Grasshopper



Navy-Punch



Navy-White



Punch-Capri



Punch-Iris



Punch-Lemon



Sour Apple-Capri

GABY - available 2/1

Athletic racer back. Fitted bodice. Spread collar. Front zip placket. Coontrasting collar, zipper and binding.

XS - XL

\$49.50 wholesale, \$99 retail

available in shown color ways



Black-White



Capri-Punch



Navy-Punch



Punch-Capri



White-Black



White-Capri

CALLY - available 2/1

Fitted bodice. Raglan Fitted Sleeve. Crew Neck.

XS - XXL

\$55 wholesale, \$110 retail

available in all solids



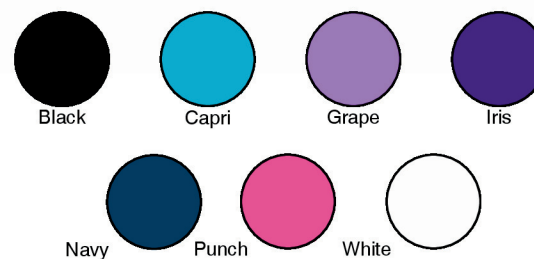
CALLY MESH - available 2/1

Fitted bodice. Raglan Fitted Mesh Sleeve. Crew Neck.

XS - XXL

\$55 wholesale, \$110 retail

available in shown solids





SARA

Fitted bodice with princess seams. Stand-up collar. Front zip placket. Long sleeves with wrist ruching detail.

S - XXL

\$64.50 wholesale, \$129 retail

available in all prints & solids



SASHA

Fitted bodice with princess seams. Stand-up collar. Full zip. Long sleeves with ruching detail on the wrists. Deep front pockets.

S - XXL

\$74.50 wholesale, \$149 retail

available only in solids



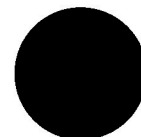
LEXI

3/4" non roll elastic waistband with patch pockets on the back and zipper front pockets with faux fly.

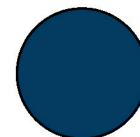
XS - XL

\$74.50 wholesale, \$149 retail

available in shown prints & solids



Black



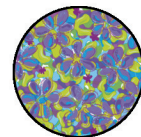
Navy



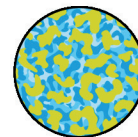
Late Bloomer



Manic Mingos



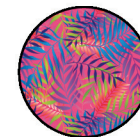
Pocket Full of
Posies



Prowl



Set Sail



Sway



CHACHA

Two tiered raw edge knife pleat

XS - XL

\$75 wholesale, \$150 retail

All of our Skorts come with built in shorts, pull on 3/4" Non-Roll elastic waistband and a pocket in back - discreetly hidden in waistband

XS = 14.5 inches, S = 15.5 inches, M = 16 inches, L = 17 inches, XL = 18 inches, XXL = 19 inches



KENLEY

Two front pockets with knife pleat ruffle around 3/4 of the hem

XS - XL

\$75 wholesale, \$150 retail



SAMBA

Box pleat ruffle at the hem

XS - XL

\$75 wholesale, \$150 retail



STELLA

Two front pockets with double flouncey ruffle around the hem.

XS - XXL

\$75 wholesale, \$150 retail

DARBY **new**

Knife pleat ruffle around hem with contrasting waistband, ruffle and stripe detail.

XS - XL

\$75 wholesale, \$150 retail

available in shown color ways

All of our Skorts come with built in shorts, pull on 3/4" Non-Roll elastic waistband and a pocket in back - discreetly hidden in waistband

XS = 14.5 inches, S = 15.5 inches, M = 16 inches, L = 17 inches, XL = 18 inches, XXL = 19 inches



Capri-Grasshopper-Lemon



Capri-Punch-Grasshopper



Geo-Capri-Punch



Late Bloomer-Navy-White



Manic Mingos-Punch-Iris



Navy-Grasshopper-Lemon



Navy-Capri-White



Navy-Punch-White



Pocket Full of Posies-Sour Apple-Capri



Prowl-Capri-Sour Apple



Punch-Capri-Grasshopper



Set Sail-Capri-Grasshopper



Sway-Punch-Capri



Ultra Dotty-Ultraviolet-Grape

JORDAN DRESS

Color block fitted bodice. Modified racerback. Stand-up collar with front zip placket. Knife pleat detail at the hem. Hidden pocket in back waistband.

XS - XL

\$99.50 wholesale, \$199 retail

available in shown color ways



Black Dotty/Polka Dotty/Black



Black/Bombshell/Iris



Frozen/Navy/White



Grape/Iris/White



Iris/Ultraviolet/Grasshopper



Navy/Cherry Tomato/White



Navy/White/Lipstick



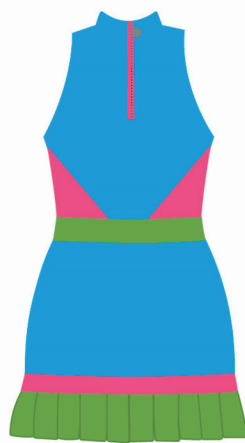
Polka Dotty/Black Dotty/Black



Poppy Dotty/Navy Dotty/White



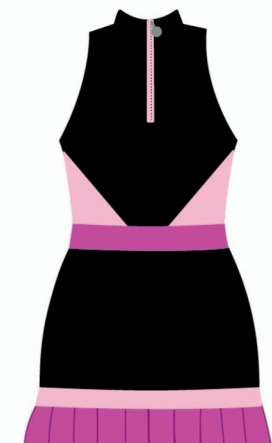
Navy/Grasshopper/Lemon



Capri/Lipstick/Grasshopper



Sorbet/White/Lipstick



Black/Sorbet/Lipstick



PENNIE

Fitted bodice with princess seams & two front pockets. Stand-up collar. Raglan cap sleeve. Front zip placket. Knife pleat detail at the hem.

XS - XL

\$99.50 wholesale, \$199 retail

****available in Black, Navy, Regal Blue and all of our prints!***



SHILOH

Fitted bodice with princess seams & two front pockets. Modified racerback. Quarter zip with stand-up collar. Knife pleat detail at the hem.

XS - XL

\$99.50 wholesale, \$199 retail

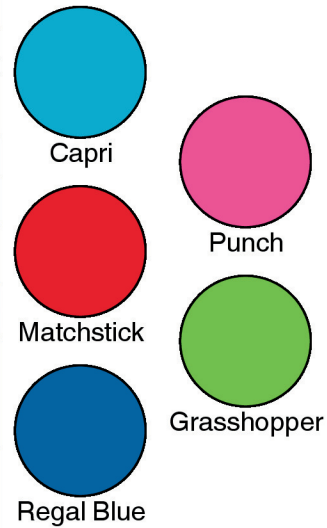
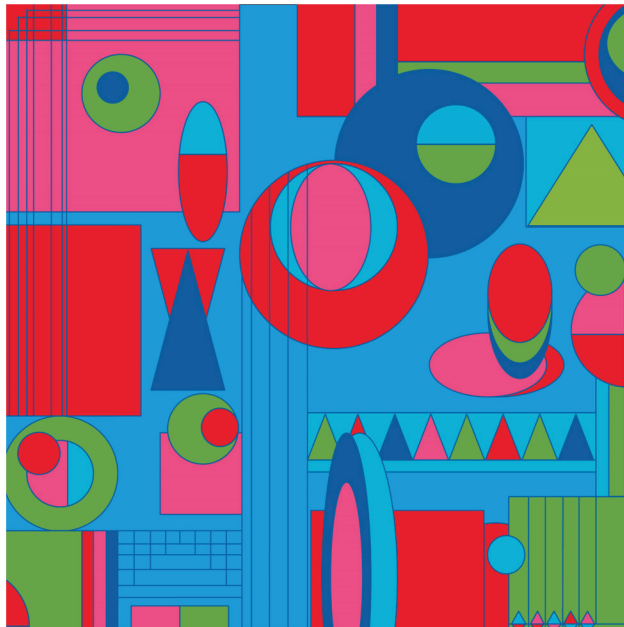
****available in Black, Navy, Regal Blue and all of our prints!***

All of our dresses come with separate shorts for underneath and a cute little baggie.

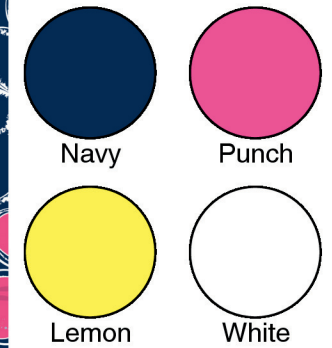
UPF 50 FABRIC

A UPF rating of 50 is the highest rating obtainable (thank-you-very-much)! This means that only 2% of available ultraviolet radiation is able to penetrate a Tzu Tzu garment. **BONUS:** this kind of protection doesn't wash out, thanks to the special weaves of the fabric. Or as we like to put it, "If we're stranded on a deserted island....we hope we have our Tzu Tzu with us!" (as if we wouldn't)

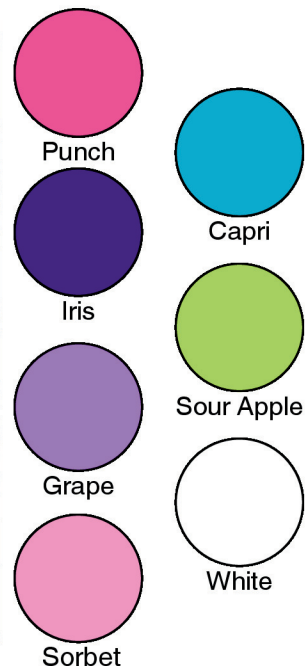
GEO - available 10/1



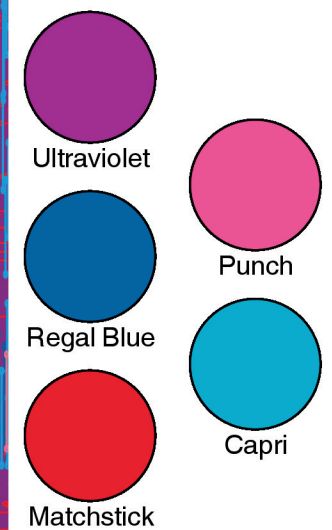
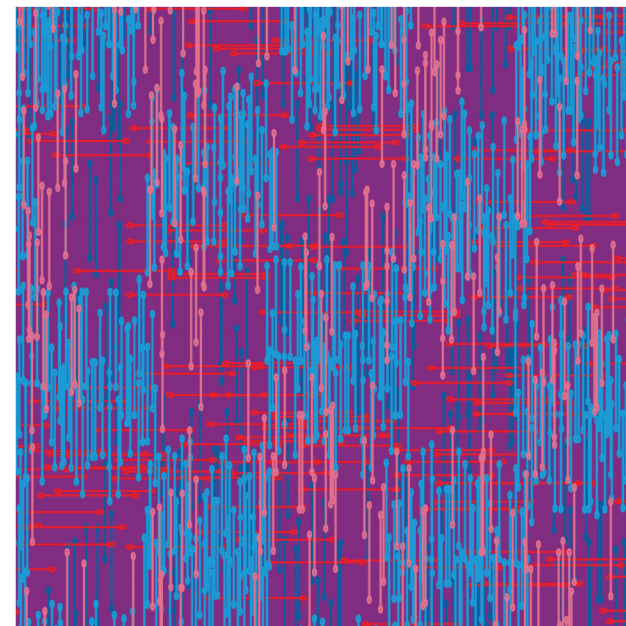
LATE BLOOMER - available 10/1



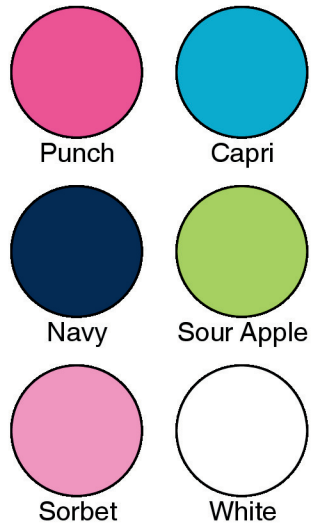
MANIC MINGOS - available 10/1



PINS & NEEDLES - available 10/1



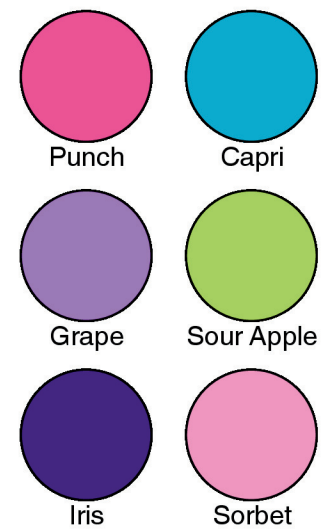
RIBBONS - available 10/1



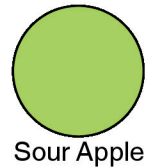
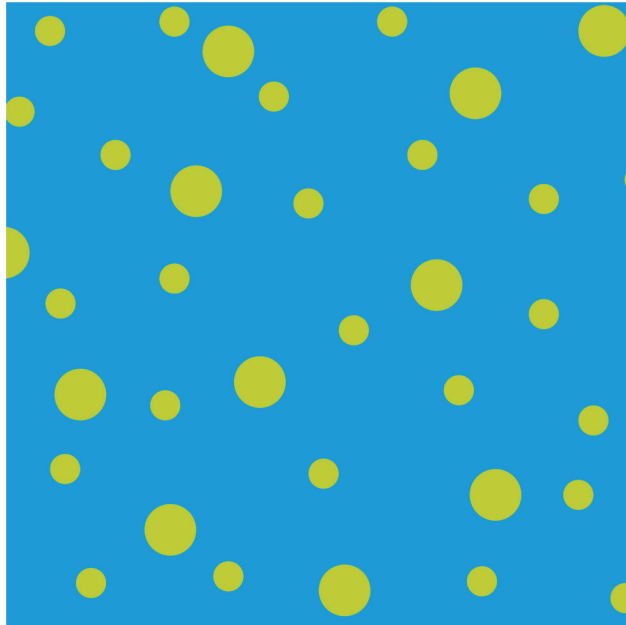
SET SAIL - available 10/1



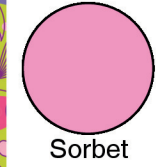
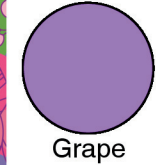
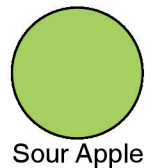
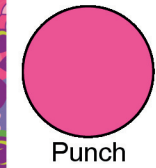
SWAY - available 10/1



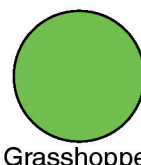
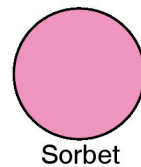
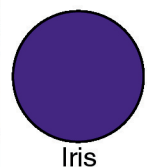
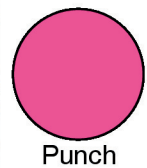
AQUA DOTS - available 2/1



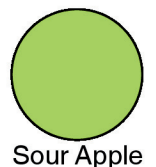
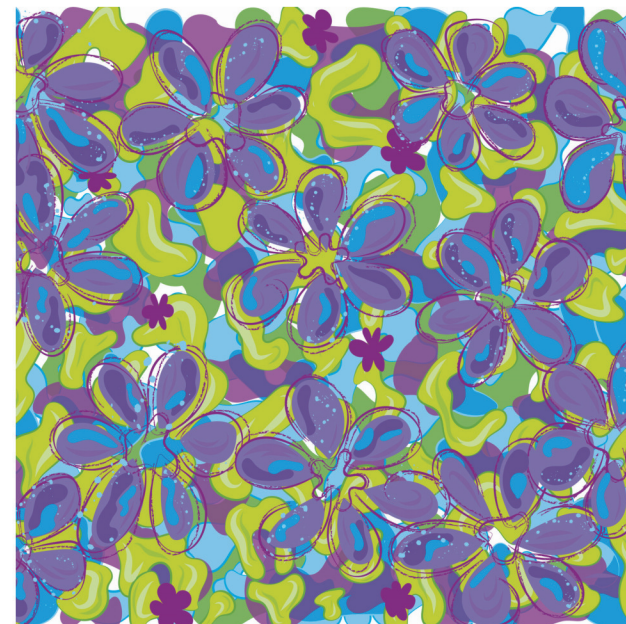
GARDEN PARTY - available 2/1



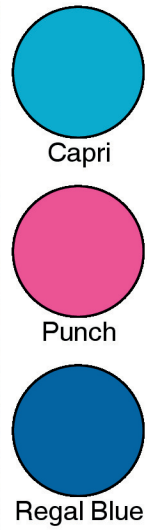
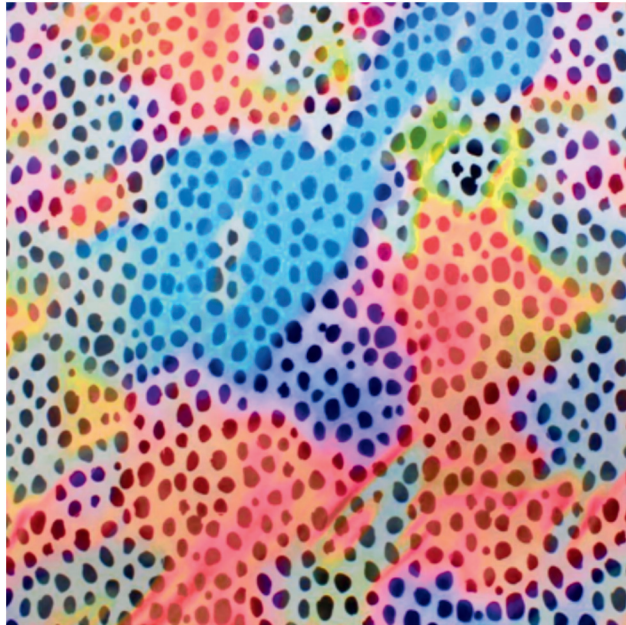
HITS THE SPOT - available 2/1



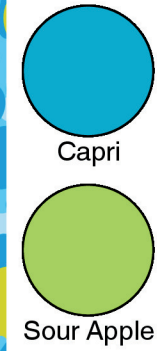
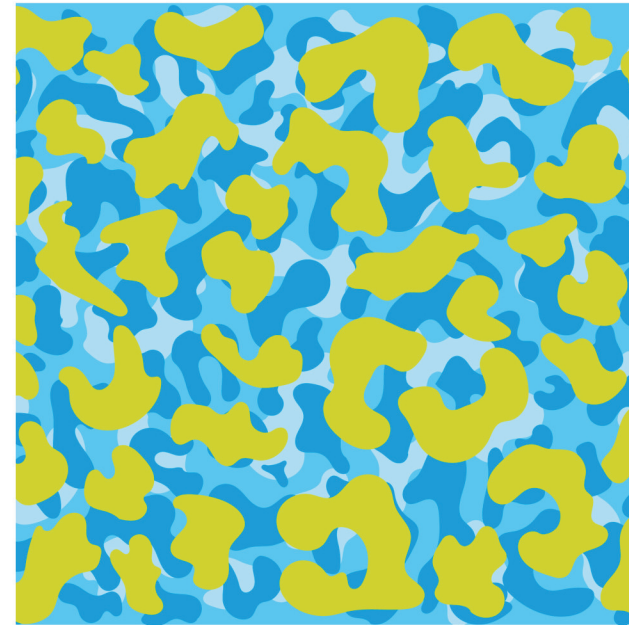
POCKET FULL OF POSIES - available 2/1



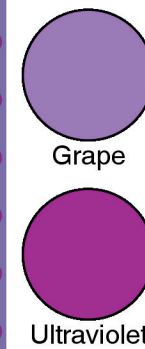
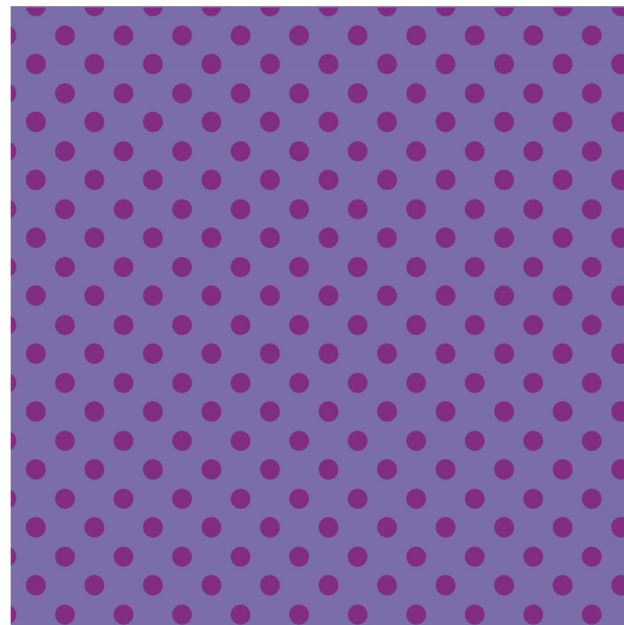
POLKA SPOTS - available 2/1



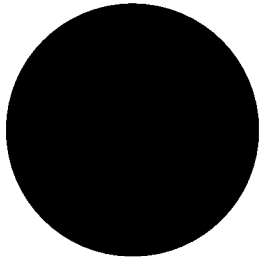
PROWL - available 2/1



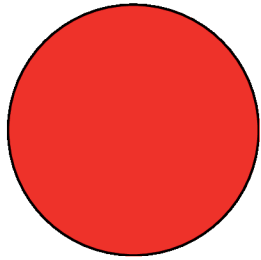
ULTRA DOTTY - available 2/1



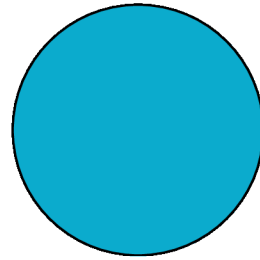
2024 SOLIDS



Black

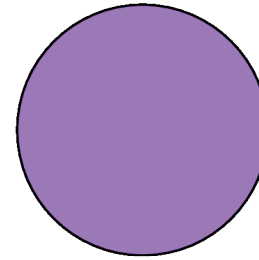


Cherry Tomato

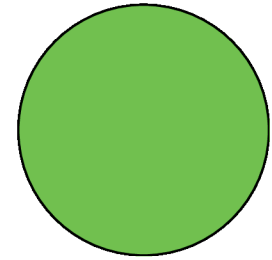


Capri

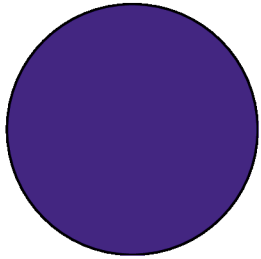
NEW!



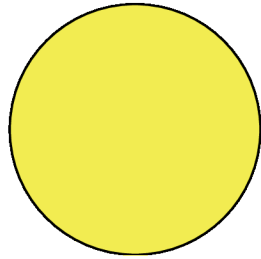
Grape



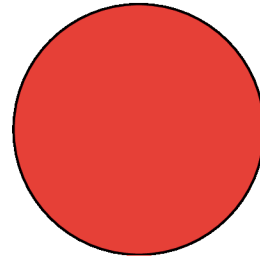
Grasshopper



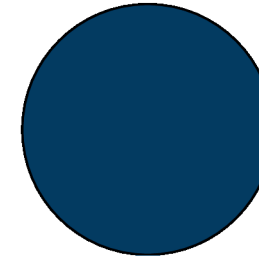
Iris



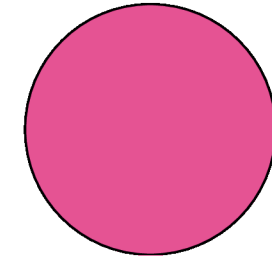
Lemon



Matchstick

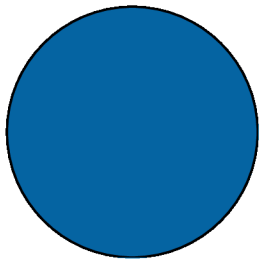


Navy

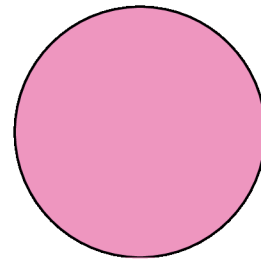


Punch

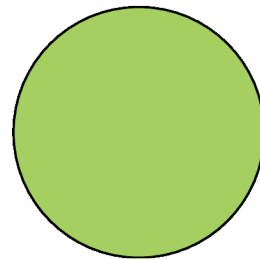
NEW!



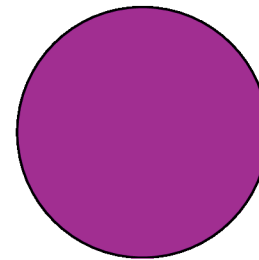
Regal Blue



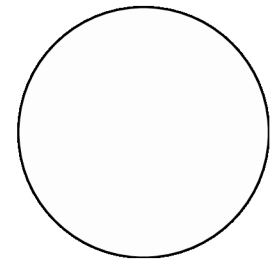
Sorbet



Sour Apple



Ultraviolet



White

TENNIS | PICKLEBALL

TOP: \$44.50 wholesale, \$89 retail - SKORT: \$59.50 wholesale, \$119 retail

SIZES: XS (00/0), Small (2/4), Medium (6/8), Large (10/12), XL (14)

Skort Length: XS - 13.5in, S - 14.5in, M - 15in, L - 16in, XL - 17in



WINNIE

Modified racer back. Fitted bodice.
Mesh detail neckline and back.

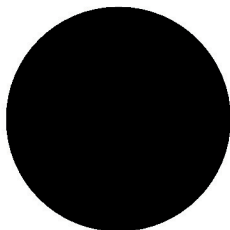


PIPER

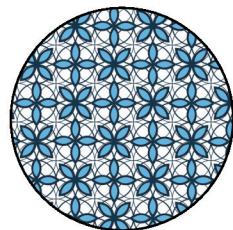
3/4" Non-Roll elastic waistband with mesh skirt.
Built in shorts with ball pocket on both sides.



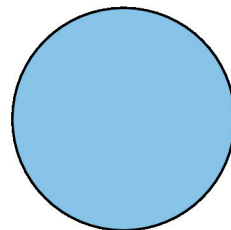
Black Dotty



Black



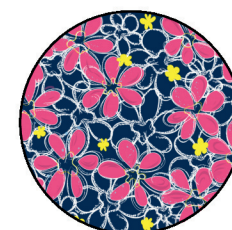
Casablanca



Frozen



Kabuki



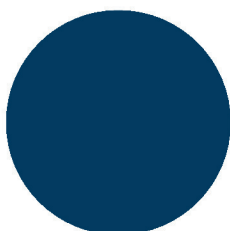
Late Bloomer



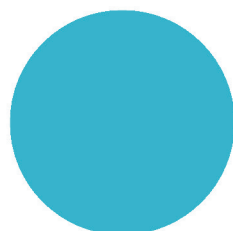
Midnight Breeze



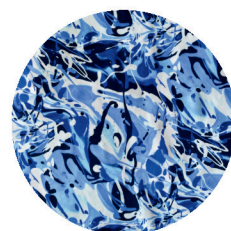
Navy Dotty



Navy



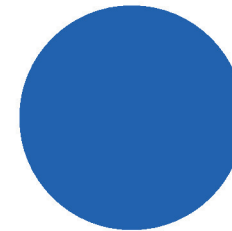
Ocean



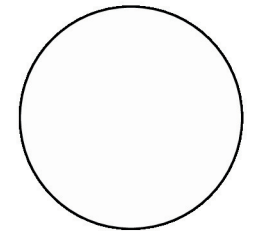
Omni



Pixie Stix



Royal



White