

BEST VIEW IN TOWN



CALL FOR AVAILABLE SPACE



On Site Management ✧ Prestigious Tenant Mix ✧ Walk to the Capitol from your office
Steps from Metro ✧ 8 Ft. Windows ✧ 200,000 +/- sq. ft. ✧ Abundant Parking

Great access to Central Business District VA & MD

FAIRCHILD BUILDING
499 SOUTH CAPITOL STREET
(703) 360-4204

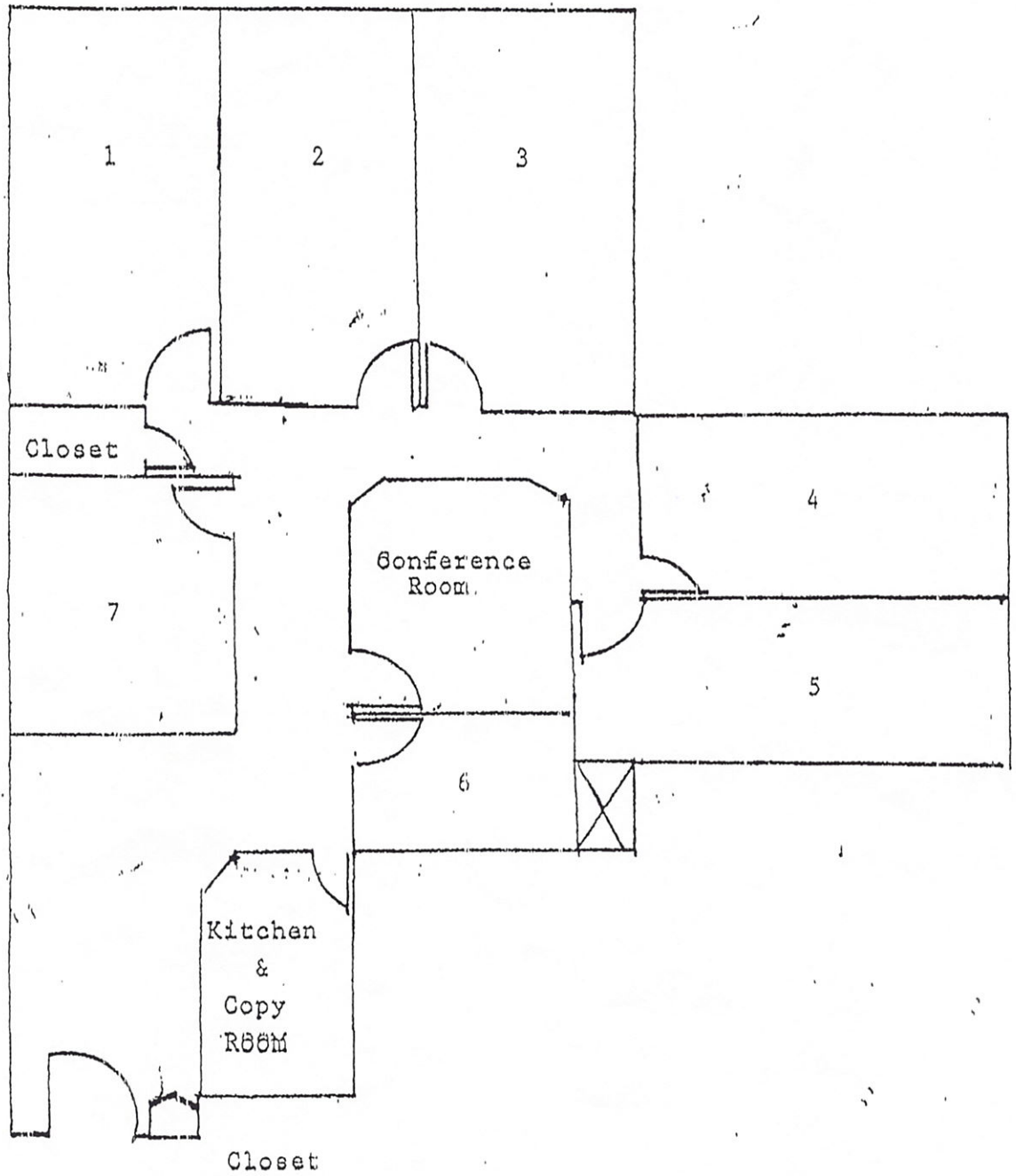
FAIRCHILD BUILDING

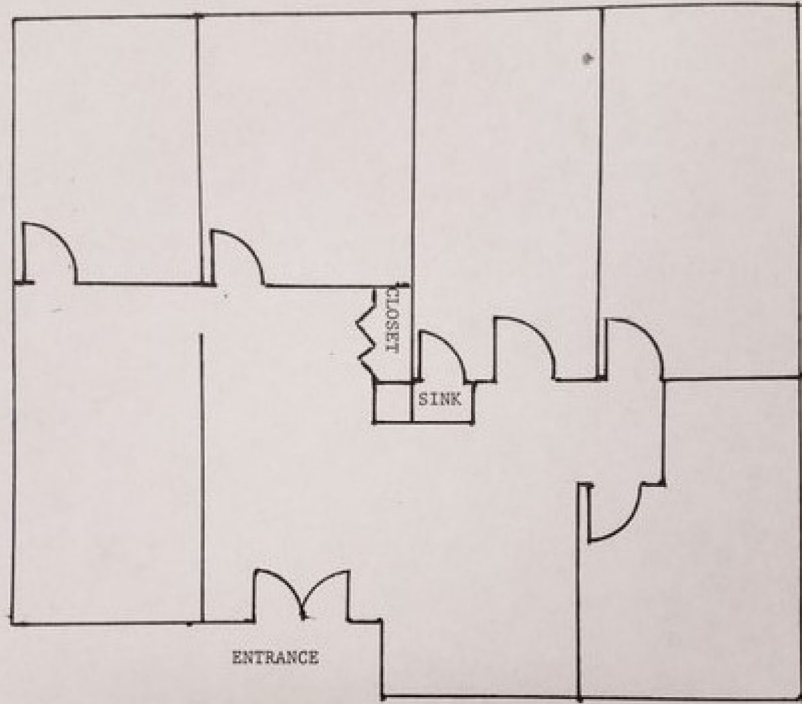
VACANT SUITES

Suite 403	- 2,368 Sq. Ft.
Suite 405	- 1,637 Sq. Ft. with Capitol View
Suite 500-A	- 1,539 Sq. Ft. with Capitol View
Suite 500-B	- 1,646 Sq. Ft. with Capitol View
Suite 507	- 3,000 Sq. Ft. with Capitol View

SUITE 403

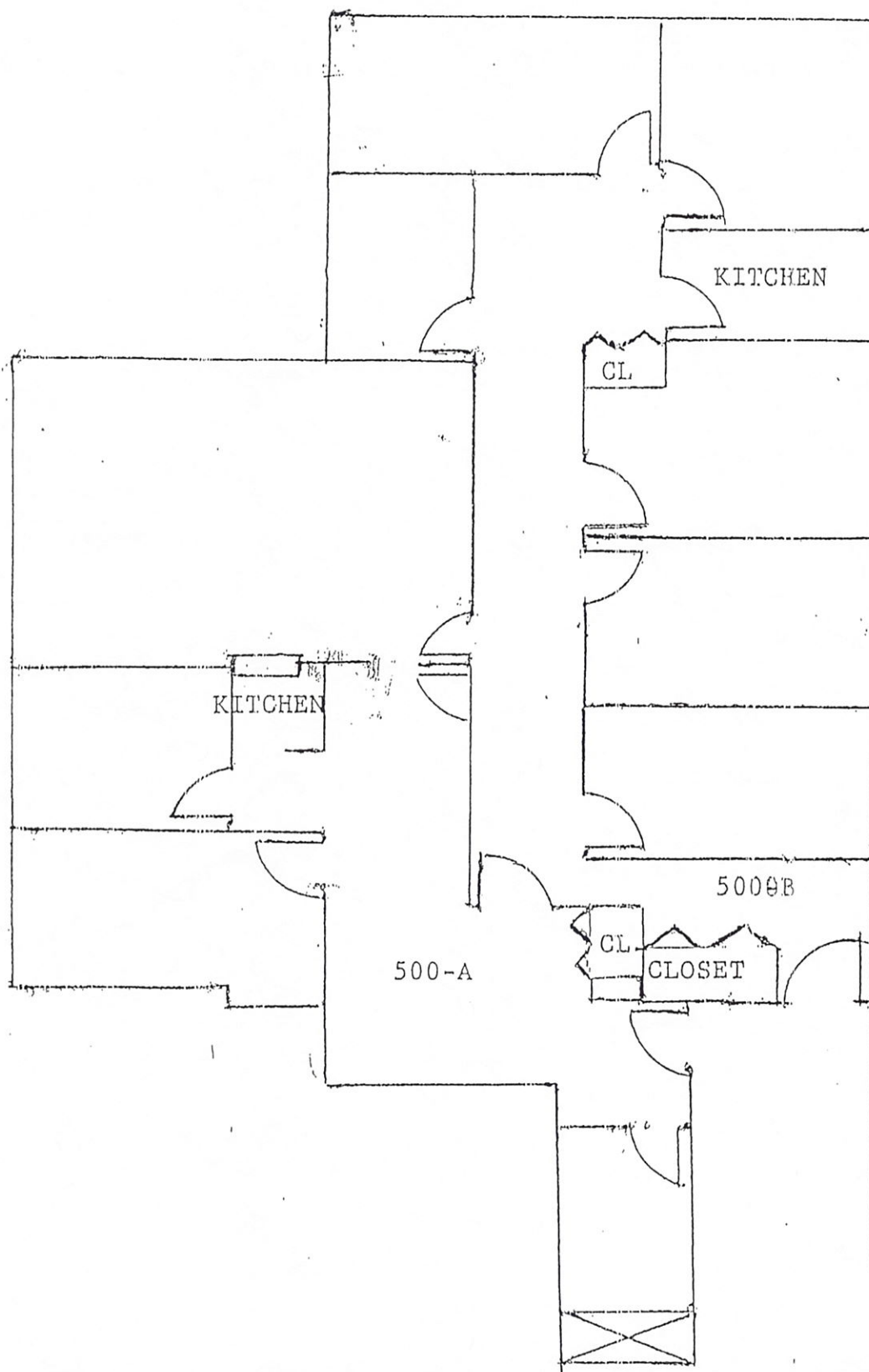
2368 #





Suite 405 1637 Sq. Ft.

SUITE 500-A AND SUITE 500-B
3,185 SQUARE FEET TOTAL



507
3000 Sq. Ft.

