



# PRODUCT CATALOG

— 2026 —



# ABOUT US

New Wave Innovations is committed to improving the efficiency of car wash operations by developing equipment and products that are both cost-effective and practical. As maintenance and equipment expenses continue to rise across the industry, a sensible and efficient approach is essential. Our solutions are designed to reduce operational costs, helping operators maximize profitability.

We have identified widespread overuse of chemicals within the car wash industry, leading to unnecessary waste. Our mission is to address this issue by minimizing chemical consumption, increasing operational efficiency, and reducing environmental impact—without compromising performance or profitability.





# table of contents

<b>GENERATORS</b>	<b>4</b>
<b>ENTRANCE APPLICATORS</b>	<b>6</b>
<b>FOAM APPLICATORS</b>	<b>8</b>
<b>SPECIAL APPLICATORS</b>	<b>10</b>
<b>MANIFOLDS</b>	<b>11</b>
<b>RINSE APPLICATORS</b>	<b>12</b>
<b>ELEPHANT EAR FOAMERS</b>	<b>14</b>
<b>MINI GENERATORS</b>	<b>18</b>
<b>BUG JUICE APPLICATORS</b>	<b>19</b>
<b>TIRE AND WHEEL</b>	<b>20</b>
<b>PARTS</b>	<b>22</b>
<b>COMING SOON</b>	<b>24</b>

# GENERATORS

## Easy Clean Generator

The original revolutionary foam generator designed to eliminate the hassle of cleaning chemical application foam systems. The Easy Clean Generator features an innovative design that allows you to clean and service your foam generators in seconds—no tools required. For quick and seamless installation, each unit comes equipped with direct-fit air and chemical fittings, along with multiple outlet size options to ensure compatibility with your applicators.



**Product Code:**  
GEN-1



**Easy Clean  
Generator  
Replacement  
Body**  
Product Code:  
GEN-BODY



**Easy Clean  
Generator  
Replacement Cap**  
Product Code:  
GEN-CAP

## Signature Series Generator

Our new signature series generator features a redesigned, more durable construction built to withstand demanding wash environments. With the same quick, tool-free cleaning and direct-fit installation, this upgraded model delivers enhanced longevity and performance. Now available with custom logo branding options.



# GENERATORS

## Easy Clean Generator Insert

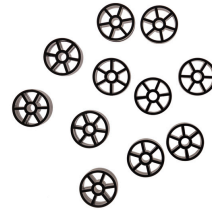


Our original twist out insert. The media is made up of two types: one that mixes and one that foams. The insert rod allows the media and mixing wheels to maintain their position.

**Product Code: Insert**



**Easy Clean Generator Replacement Pad**  
Product Code: Insert-PD



**Easy Clean Generator Replacement Ball**  
Product Code: Insert-BL

## Bay Foam Generator

Used for foam brushes. Shorter in length and requires less foaming chemical to produce amazing results in the bays

**Product Code: BFG-1**



**Bay Foam Generator Replacement Body**  
Product Code: BFG-Body



**Bay Foam Generator Mount:**  
Product Code: BFG-MK



**Bay Foam Generator Insert**  
Product Code: BFG-Insert

# ENTRANCE APPLICATORS

## Cyclone

Rope ribbon applicator. Creates rope like droplets onto the vehicle. Creates a great show with up to 6 colors coming from the applicators. Our unique mounting system allows you to add additional applicators or lights right with the Cyclone in one easy system.

### **Cyclone 1-3 color rain with mount**

Product Code: CYC-1MK

### **Cyclone 1-6 color rain with mount**

Product Code: CYP-1MK

## Evolution

Sheet foam applicator. The wall of Foam! Can be used as a single color, tri-color or 6 color applicator. Using our unique mount you can add lights, a pre or follow up applicator. Great use for hot wax as you can use a secondary chemical right behind it.

### **Evolution 1-3 color sheet with mount**

Product Code: EVO-1MK

### **Evolution Plus up to 6 color sheet with mount**

Product Code: EVP-1MK

### **Evolution Sheet Waterfall with mount**

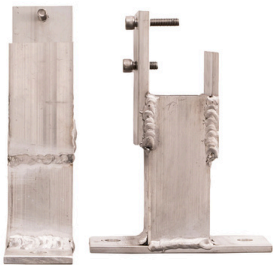
Product Code: EVR-1MK



# ENTRANCE APPLICATORS

## Cyclone/Evolution Mounts

Our selection of mounts allows easy installation and the ability to add lights and additional applicators.



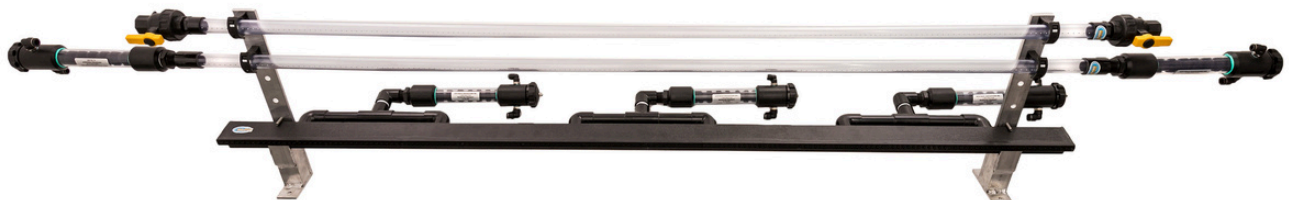
**Standard Mount**  
Product Code:  
CYC/EVO-MK



**Extended Mount**  
Product Code:  
CYC-LMK



**Extended  
Mount for 2**  
Product Code:  
CYC-ELMK



# FOAM APPLICATORS



## Foaming Rain Bar

Mega- Top Stick uses a 1in pipe to help balance out flow of chemical. Uses 1in spaced machined holes. At 92" it can cover the largest of vehicles. Uses 2 gens, one on each side to create great foam across the whole length.

**Product Code: FRB-1MK**



## Top Stick

The unique foam stick design delivers exceptional coverage across the top and upper surfaces of the vehicle, meeting customer expectations while maintaining a lighter application along the lower panels. This controlled distribution ensures optimal chemical carry-down while minimizing waste. Precision-machined, centered spray holes are engineered to create a crisscross spray pattern, maximizing chemical application on vehicles of all sizes and improving overall efficiency.

**Product Code: TSG-1MK**



## Foam Sticks

Our Foam Sticks feature a precision-engineered hole pattern that delivers heavier foam coverage on upper surfaces for visible application, while a wider lower spray ensures proper coverage, effective carry-down, and improved lubricity along the vehicle's sides.

**Product Code: FSG-1MK**

# FOAM APPLICATORS



## Top Foaming K-Stick

The horizontal K-Stick is engineered to provide superior downward wet foam application for consistent vehicle coverage. It utilizes flood jet nozzles optimized for soap and chemical delivery, particularly with foaming solutions. Saddle-style nozzle harnesses enable quick removal, replacement, and precise spray adjustment as needed.

**Product Code: KTF-1MK**



## K-Foamer Side Stick

Uses flood jet nozzles that are designed for soap and chemical applications that perform optimally with foaming solutions. They deliver consistent, moderate wet coverage across the vehicle surface. Saddle-style nozzle harnesses allow for easy removal, replacement, and precise adjustment to meet application requirements.

**Product Code: KSS-1MK**

# Special APPLICATORS

## Total Body Applicator

A unique applicator designed for applying sealants and waxes. It delivers a consistent, controlled application without excessive product use. The unit features a top stick with two adjustable wings, allowing precise control over where side chemicals are applied.

**Product Code: TBA-1MK**



## Top Sealer Arch

Curved-wing top applicator designed for smooth chemical flow down the vehicle easily for friction wash. Perfect for extreme waxes and post-detergent finishing products.

**Product Code: TSA-1MK**



## Manifolds

Manifolds are available for both air and chemical distribution in 3-port and 6-port configurations.

Air manifolds use 3/8 poly fittings and chemical manifolds use 1/2 poly fittings. Designed to efficiently branch supply lines to multiple applications, they require only a single connection from the air compressor or backroom air system. When paired with Cyclone and Evolution units, these manifolds streamline installation by eliminating the need for individual home-run lines to each generator



**3 port Air or Chemical  
Manifold**

**6 port Air or Chemical  
Manifold**



# Rinse APPLICATORS



## Top Turbo Rinse Blaster

Each side features three nozzles positioned from the center point, with each nozzle angled at a 5-degree increment relative to the previous one. This configuration creates a cascading flow pattern that enhances water distribution, maximizing the removal of residual chemicals and soap for a more effective rinse.

**Product Code: TTRB-1MK**

## Rinse Bar with Proportioning Valves

Measures 92 inches in length, with precision micro-machined holes spaced at 1/2-inch intervals to ensure consistent application. Supplied by proportioning valves located on both sides of the applicator for balanced and controlled distribution.

**Product Code: RSB-1MK**



## Mirror Rinse Wands

Available in two configurations: diaphragm check valves mounted on valve bodies with interchangeable nozzles, or precision micro-machined orifices designed to reduce required operating pressure. Supplied as a set of two, each unit includes a custom mounting system that allows full rotational adjustment for precise positioning and application control.



### Mirror Rinse Wands Diaphragm

**Product Code: MRD-2MK**



### Mirror Rinse Wands Machined Hole Style

**Product Code: MRT-2MK**

# RINSE APPLICATORS

## Spray Manifolds

Water applicator equipped with a check-valve body nozzle, designed for reliable and controlled flow. Primarily used for vehicle rinsing or to supply water to friction-based brush systems, including side, wheel, and top brushes. Compatible with a wide range of brush configurations requiring consistent water delivery.

### **Two Spray Manifold**

Product Code: M2N-MK

### **Three Spray Manifold**

Product Code: M3N-MK

### **Four Spray Manifold**

Product Code: M4N-MK

### **Five Spray Manifold**

Product Code: MN-MK



# ELEPHANT EAR FOAMERS

## Elephant Ear Foamer

The Elephant Ear Foamer is a versatile chemical applicator that can be used for pre-soak, tunnel foam, protectants, sealants, and any other foam applications. The EEF tube is designed with a unique curve and diffuser to create even and consistent foam. Combined with precision machined holes specifically aimed to apply chemical evenly across any vehicle type for maximum clean.



**Elephant Ear Foamer  
set of 2 with Mounts**  
Product Code: EEF-2MK



## Top Ear Foamer

Top Ear Foamer is engineered to deliver exceptional coverage across the top surfaces of vehicles and is compatible with a wide range of equipment. Its advanced diffuser system ensures consistent foam distribution throughout the entire application process. Precision-machined outlets, arranged in a crisscross pattern, maintain optimal coverage across varying vehicle sizes.

**Product Code: ETF-1MK**



# ELEPHANT EAR FOAMERS

## Twin Ear Foamer

The Twin Ear Foamer is a highly versatile, fully adjustable applicator engineered for precise chemical distribution. Its dual-ear design enables independent control of front and rear spray patterns, including application distance, height, and directional flow. This flexibility allows for optimized coverage and performance across a wide range of applications. Designed for adaptability, the unit can be mounted in multiple configurations, ensuring seamless integration with virtually any equipment setup.

**Product Code:**



## V-Jet set of Elephant Ear Foamer

Equipped with four V-jet nozzles and durable saddle-style connectors, this unit delivers precise, paint-sprayer-style coverage with controlled, low-foam output. Ideal for rinse-aid, pre-soak, and triple-coat applications, it features fully customizable nozzles for tailored performance.

# ELEPHANT EAR FOAMERS

## Double Ear Foamer

Dual Elephant Ear design, enabling two separate chemical applications. This configuration allows for efficient separation of wash packages without requiring additional tunnel space.

**Product Code: EDF-1MK**



## Triple Ear Foamer

Designed to deliver tri-color application, this system features a unique pivot-mounted design that allows each Elephant Ear to be precisely adjusted. This enables optimal positioning and the flexibility to create customized color groupings or intersecting application patterns.

**Product Code: ERTP-1MK**

## Quad Ear Foamer

Four Elephant Ears, one for soap and three for triple-coat application. Individually adjustable mounts provide precise control, allowing for customized cross-pattern color coverage.

**Product Code: QEF-1MK**



# ELEPHANT EAR FOAMERS

## Diaphragm Valve Body for 1" Saddle Clamp Pipe

Product Code: DVB-1



## Twin Ear Foamer Tube Assembly Only

Product Code: TWT-FT



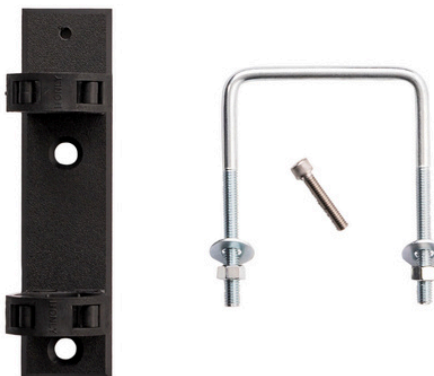
## Elephant Ear Foamer Tube Only

Product Code: EEF-FT



## Elephant Ear Foamer Mount

Product Code: EEF-MK



# MINI GENERATORS

## Mini Generator

Smaller version of our large gens. Small and compact, these are designed to provide bumper or window application such as a scent application, or bug juice on the bumper.

**Product Code: MFG-1MK**



## Mini K-Nozzle Generator

These mini-gens use a flood jet k-nozzle. Mount them as needed to provide accurate direct online application of product. Best used for less to non-foaming chemical application.

**Product Code: MGK-1MK**



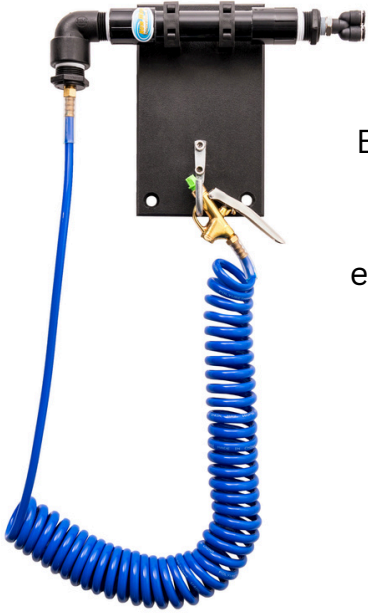
## Mini Scent Generator

Uses small v-jet nozzles to provide precision controlled chemical application where you need it.

**Product Code: MSK-1MK**



# BUG JUICE APPLICATORS



## Bug Juice Applicator

Bug Juice Applicator Station includes Mini Generator, 25ft Coiled Hose, Brass Sprayer, Nozzle and Mount.

Compact design saves on space and coiled hose eliminates the hassle of regular hoses. Easily detaches from mount for storage during closing.

9:18 AM

## Bug Juice Applicator with Mount

Product Code: BJA-1MK

## Bumper Bug Applicator

Mini Generator with a floor mount. Applies bug juice automatically to the bumper without the need to use a wand in the prep area.

## Bumper Bug Applicator with Mount

Product Code: MSN-1MK

## Bumper Bug Applicator with Mounts Set of Two

Product Code: MSN-2MK



# TIRE AND WHEEL

## Chemical Tire Applicator



The CTA features independent nozzle body check valves. Fully independent adjustable nozzle body spray arms to adjust to desired application height. Uses 80 degree fan, or upgrade to full cone spray for better foaming. Easily cleanable and adjustable nozzles. Mount is made of marine board to withstand the harshest of environments. Or get the swivel mount to avoid damage if bumped by a car.

**CTA Applicator with Mount**  
**Product Code: CTA-1MT**



**CTA Mounting Kit only**  
**Product Code: CTA-2MT**



**CTA Applicator set of two with Mounts**  
**Product Code: CTA-2MT**

# TIRE AND WHEEL

## CTA Applicator with Upgraded Full Cone Nozzles with Mount

Our tire applicator with upgraded nozzles that present more coverage at a higher pressure

### CTA Applicator with Upgraded Full Cone Nozzles with Mount

Product Code: CTA-CNS-1MT



## Tire and Wheel Rinse Applicator

Ground mounted similar to our CTA, uses check valve nozzle bodies with interchangeable nozzles. Arms are adjustable for complete control of where you want your product to go.

### Tire and Wheel Rinse Applicator with Mounts

Product Code: TRW-1MK

# PARTS



**Easy Clean Generator Insert**  
Product Code: INSERT



**Easy Clean Generator Replacement Cap**  
Product Code: GEN-CAP



**Easy Clean Generator Replacement Body**  
Product Code: GEN-BODY



**Bay Foam Generator Replacement Insert**  
Product Code: BFG-INSERT



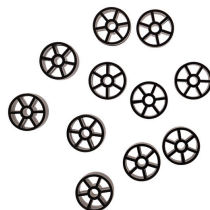
**Bay Foam Generator Replacement Body**  
Product Code: BFG-GEN-BODY



**U-Bolt 4" round**  
Product Code: UB-4RD  
**U-Bolt 4" square**  
Product Code: UB-4SQ



**CTA Mounting Kit only**  
Product Code: CTA-MT



**Easy Clean Generator Replacement Ball 1 Piece**  
Product Code: INSERT-BL



**Easy Clean Generator Replacement Pad 1 Piece**  
Product Code: INSERT-PD

# PARTS



**Cyclone/Evolution  
Standard Mount**

Product Code:  
CYC/EVO-MK



**Cyclone/Evolution  
Extended Mount**

Product Code:  
CYC/EVO-LMK



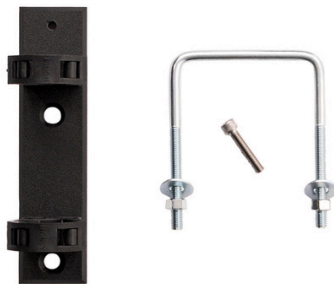
**Cyclone/Evolution  
Extended Mount DBL**

Product Code:  
CYC/EVO-ELMK



**Diaphragm Valve  
Body for 1" Saddle  
Clamp Pipe**

Product Code: DVB-1



**Elephant Ear Foamer  
Mount**

Product Code: EEF-1MK



**Bay Foam Generator  
Mount only**

Product Code: BFG-MK