


**HERCULES SADDLE TREE CO., INC.**

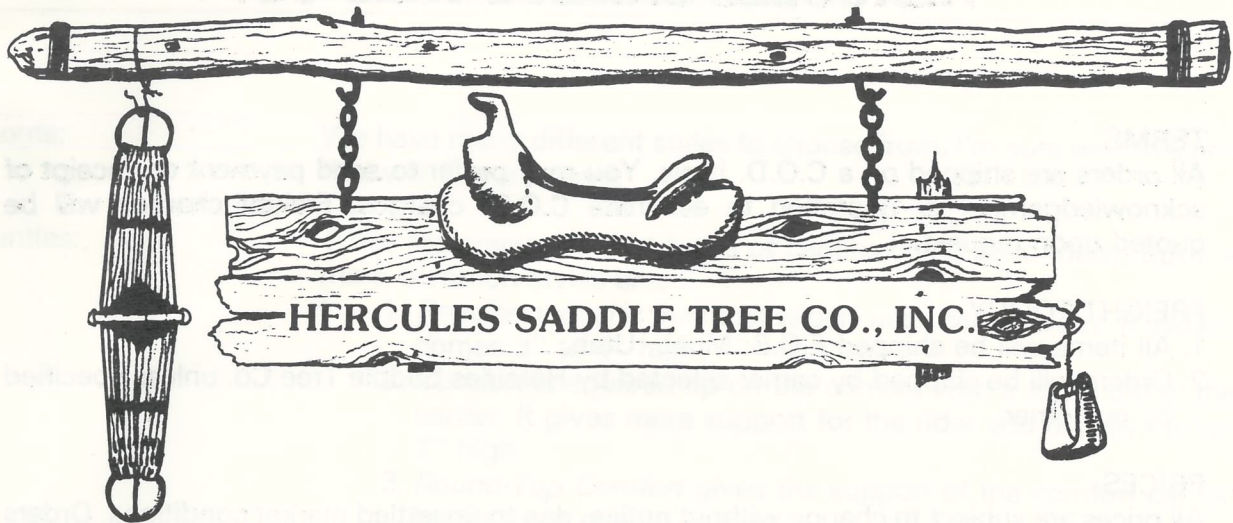
**QUALITY SADDLE MAKER SUPPLIES**  
**1030 S. Bowling Alley Lane**  
**P.O. Box 966**  
**Moab, Utah 84532**  
**(801) 259-8106**



 Pete Plastow  
BA 1983

**Price \$5.00**





Dear Friends,

Established in 1982, Hercules Saddle Tree Co. has become the foremost manufacturer of custom Saddle Trees, reflecting our dedication to excellence in workmanship, highest quality materials, and a dependable delivery time. We are proud to share a legacy of tradition with some of the greatest leather artists in the world; the custom Saddlemaker.

This catalog shows a variety of Tree and Horn styles as well as other information you can use when ordering custom Saddle Trees. We also have a complete line of Hardware, Stirrups, Cinches, and Accessories in stock.

We appreciate your business, and will continue our efforts to make Hercules Saddle Trees the very best available.

Sincerely,

James Parry  
Owner and Manager

# HERCULES SADDLE TREE CO.

## TERMS

All orders are shipped on a C.O.D. basis. You may prefer to send payment on receipt of acknowledgement or quotation to eliminate C.O.D. charges. Freight charges will be quoted upon request.

## FREIGHT POLICY

1. All items will be shipped F.O.B. Moab, Utah.
2. Orders will be shipped by carrier selected by Hercules Saddle Tree Co. unless specified by customer.

## PRICES

All prices are subject to change without notice, due to unsettled market conditions. Orders will be invoiced at the prices prevailing at date of shipment.

## CLAIMS

1. Claims for shortages in shipment or error in billing must be made within 10 days of shipment.
2. Claims for loss in transit should be filed directly with our office.
3. Claims for damage in transit should be filed directly with the carrier.

## WARRANTY

Workmanship and materials are guaranteed for five years under normal use. This warranty applies only to the original purchaser.

## RETURNS

No returns or exchanges are accepted. Claims for errors, shortages, etc. must be made within 10 days from date of shipment. Every Tree is custom made to your exact specifications, and should be inspected upon arrival to verify accuracy.



---

## SADDLE TREE INFORMATION

---

**Fronts:** We have many different styles to choose from. I'm sure we have one that will fit your need.

**Cantles:** There are many different types of cantles being used today, but the more common styles are:

1. *Regular or oval* is the most widely used cante today. It usually comes 3" to 4" high.
2. *Comfort* is squared up on the corners with a slight dip in the center. It gives more support for the rider and usually comes 3" high.
3. *Round-Top Comfort* gives the support of the comfort cante, but is more oval in shape.
4. *Shovel* comes with either a straight or beveled edge, is usually 4 to 6 inches high and no wider than 12½".

The dish in a cante will usually vary in size from ¾" to 2"; usually in ¼" increments.

**Bars:** When selecting bars for your trees, please refer to the guide on page 4.

**Gullet:** There are usually four different gullet widths to fit the withers and backs of different size horses.

1. Regular 5¾"
2. Semi-Quarter Horse 6" to 6¼"
3. Quarter Horse 6½"
4. Full Quarter Horse 6¾" to 7"

All widths are built on the same angle, except the full Quarter Horse which has a flatter angle to the bars. Remember, we can build any size or width gullet.

**Horns:** In selecting a horn for your tree, please refer to the guide on pages 5 through 7.

**Coverings:** Every tree we make is covered with genuine bullhide: the strongest and heaviest available. Every tree is hand stitched with rawhide string, and nailed. No staples are used. Every tree is thoroughly dried, leveled, and sealed with a special varnish.

**Duplications:** We can duplicate most any Tree if you have enough of the pieces left to make a pattern. Our pattern inventory includes Swell, Cante, and Bar patterns of most of the old major Saddle Tree companies.

**IN ORDER TO GUARANTEE A FIT BACK INTO OLD LEATHERS, WE MUST HAVE THE SWELL, SEAT, AND CANTLE LEATHERS, AS WELL AS ONE SKIRT LEATHER.**





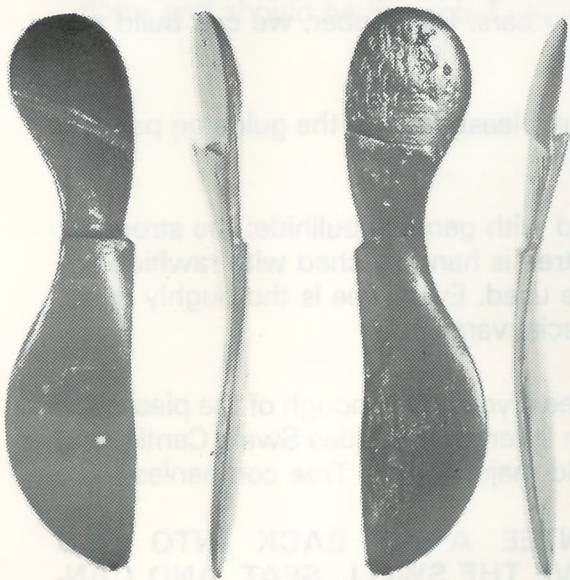
Arizona

The Arizona Bar is by far our most popular all around bar for today's saddles. It is strong, has a lot of rocker in it which lets it sit down on horses well. The twist in the bar allows for a good narrow seat.

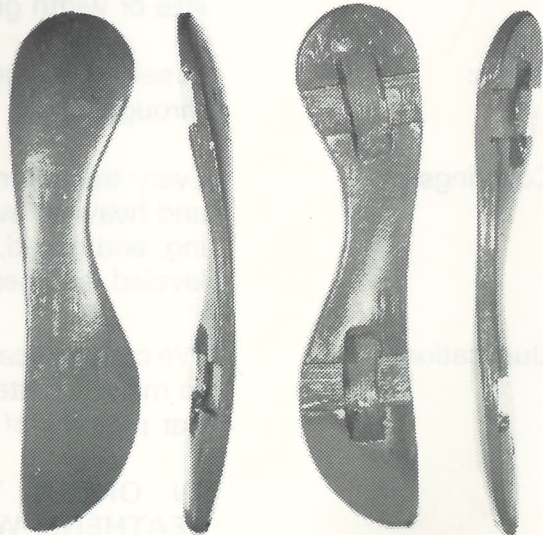


North West

A good fitting bar which allows more surface on the horse's back.



Regular

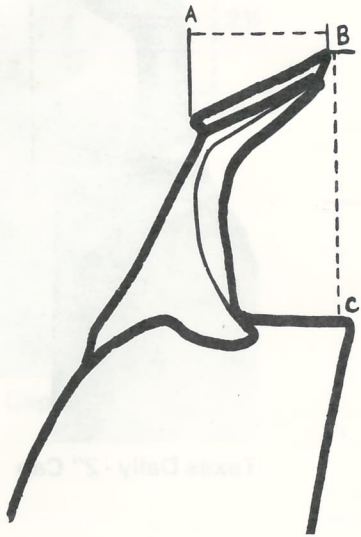


Sierra Pack



**- HORNS -**

Our horns are made of the finest bronze and ductile iron available.

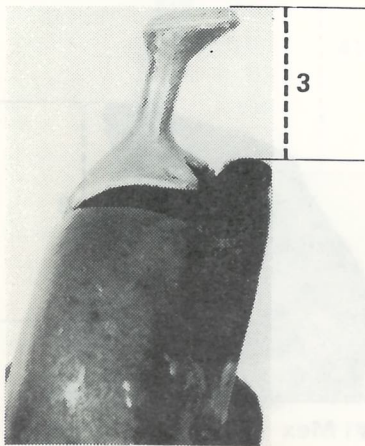


How to measure a horn.

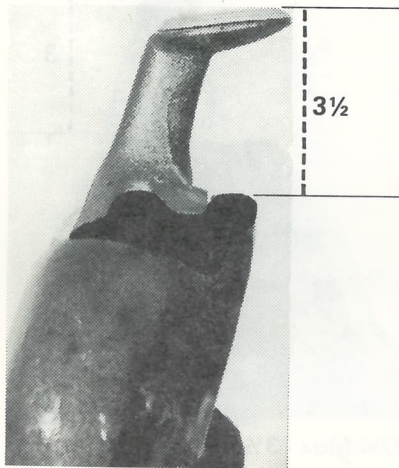
A to B Cap size  
B to C Horn height

Height: Be sure to measure from top of the horn straight down to the front of the fork. (Line BC)

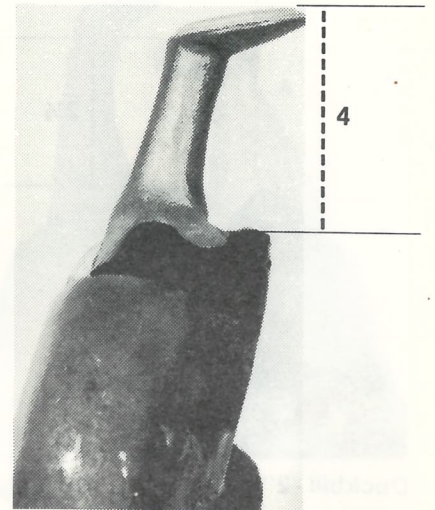
Cap Size: Width of cap (Line AB)



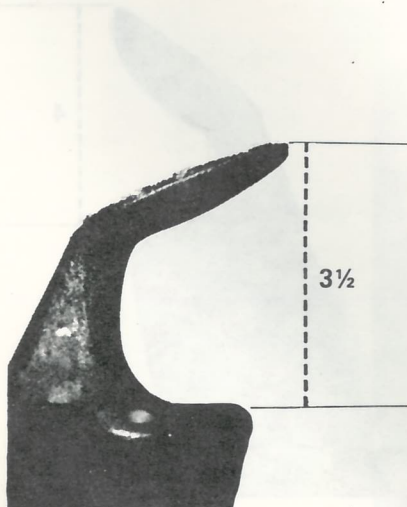
#6 - 2" Cap



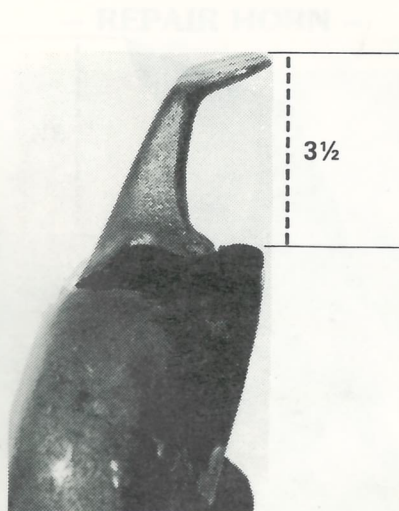
#4 - 2 1/2" Cap



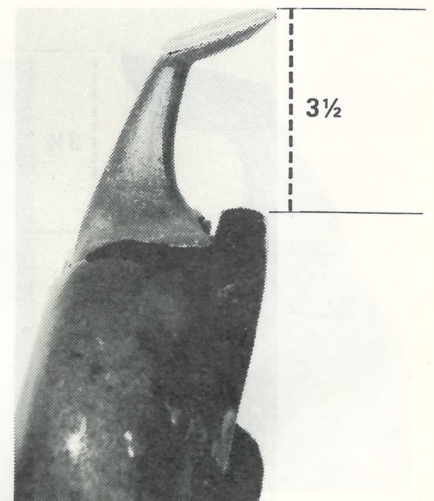
#5 - 2 1/2" Cap



#2 - 3" Cap



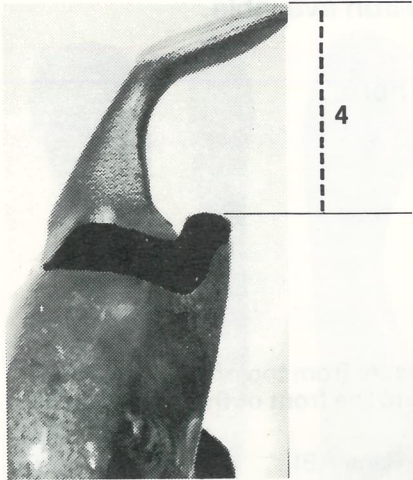
#2 - 1 1/4" Cap



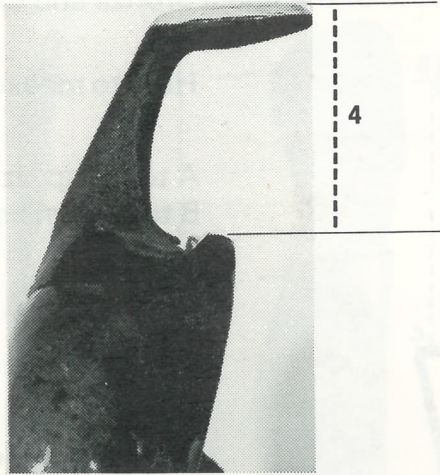
Dally - 2 1/4" Cap



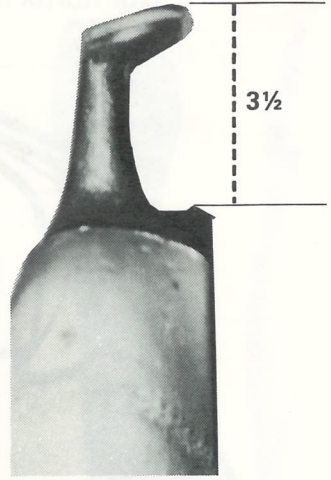
- HORNS -



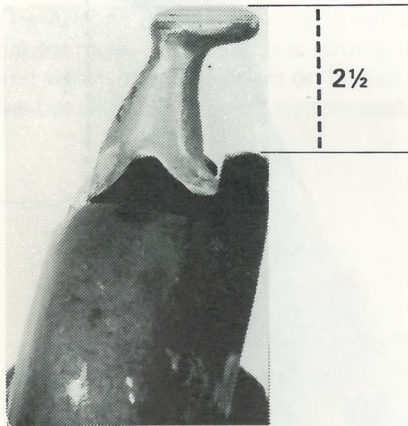
Dally - 3" Cap



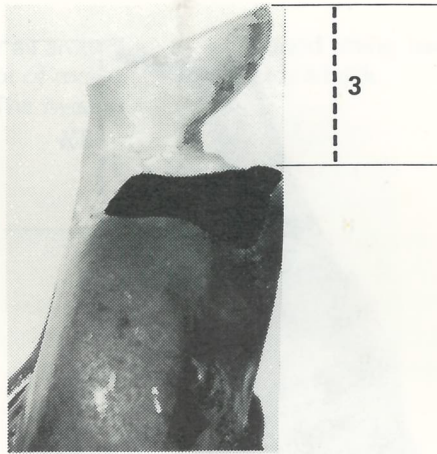
Texas Dally - 3" Cap



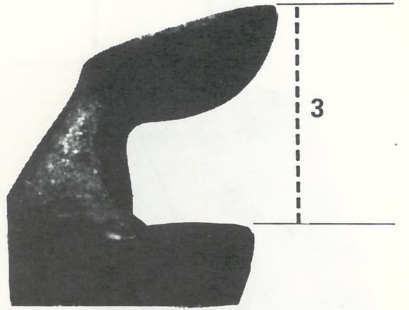
Texas Dally - 2" Cap



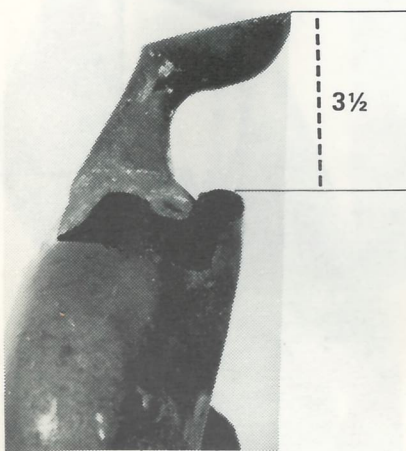
Duckbill - 2" Cap



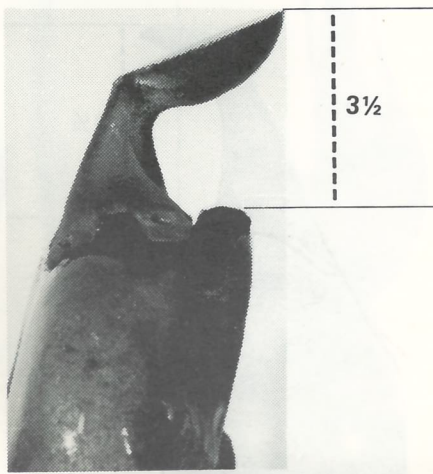
Old Mex - 3 1/2" Cap



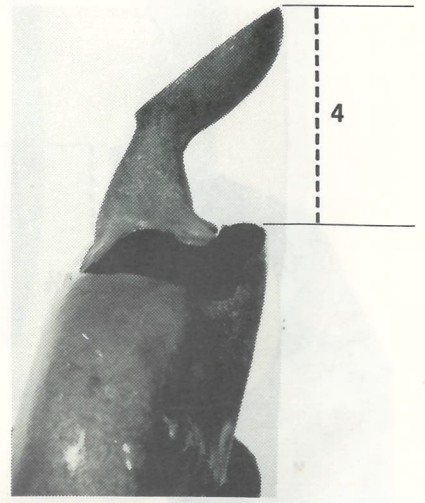
#1 Mex - 3" Cap



#2R - Mex - 2 3/4" Cap



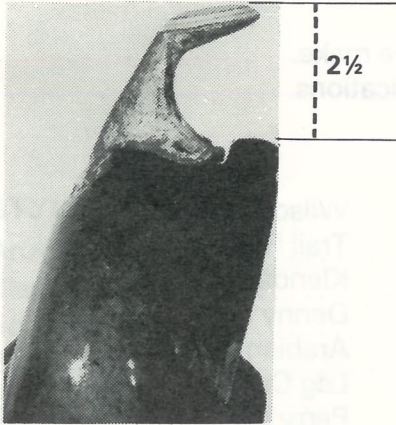
#2 Mex - 3 1/4" Cap



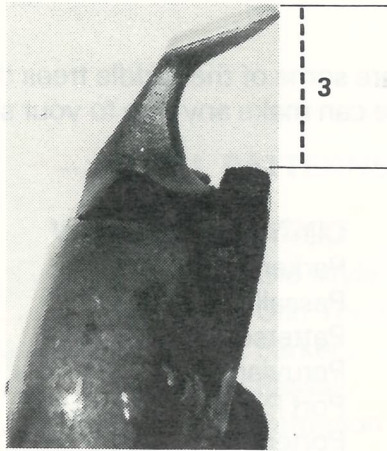
Egg



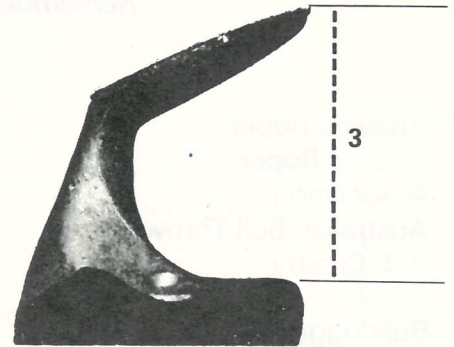
- HORNS -



Boy - 2" Cap

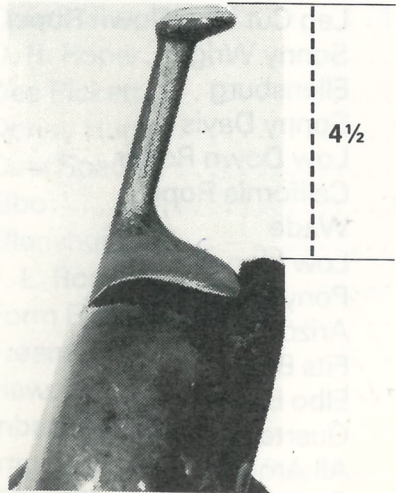


#1 Reg - 2 1/4" Cap



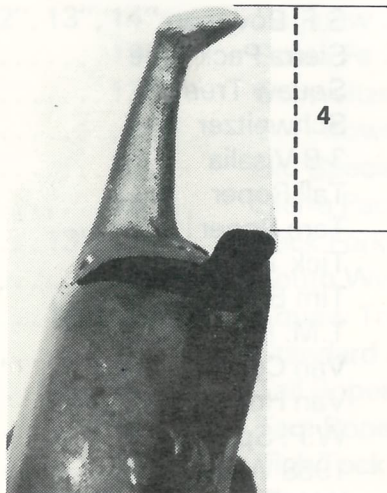
#1 - 3

- CUTTING HORSE HORNS -

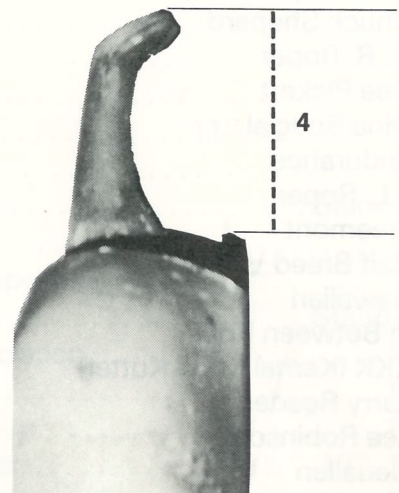


Cutter

This horn is available  
3 1/2", 4", 4 1/2" tall

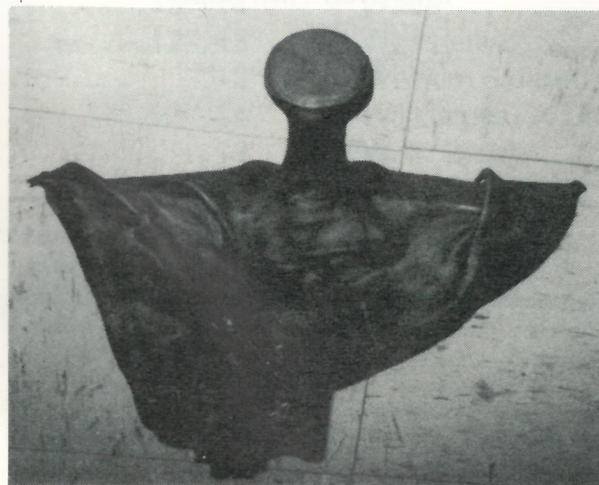


#10 - 1 1/2" Cap



B-D - 1 1/2" Cap

- REPAIR HORN -





---

– SADDLE TREES –

---

Listed below are some of the saddle trees that we make.  
*Remember, we can make any tree to your specifications.*

Amarillo Roper  
Arizona Roper  
Association  
Australian Bull Thrower  
Bob Crosby  
Bronk  
Bulldogger  
Bull Moose  
Buster Welch Cutting Horse  
Buster Welch Roper  
Butch Cassidy  
Cahil Roper  
Chuck Shepard  
D. R. Roper  
Dee Pickett  
Dina Special  
Endurance  
F.L. Roper  
Freemont  
Half Breed Visalia  
Hawaiian  
In Between Roper  
KKK (Kernal Koon Kutter)  
Larry Reeder  
Lee Robinson  
Lieuallen  
Little Wonder  
Low Moose  
Martha Josey Barrel Racer  
Mecham Roper  
Modified Association  
New South West Roper  
Old Mexico  
Old Style Visalia

Olin Young  
Parker  
Passall  
Patterson Roper  
Peruvian Peso  
Port Parker  
Porter  
Larry Reeder C.H.  
Saginaw  
Santa Fe  
Sid Special  
Slick Fork  
S.F. Bowman  
Sierra Pack Tree  
Squaw Tree  
Schweitzer  
3-B Visalia  
Tall Roper  
Tare Roper  
Tick Tock Roper  
Tim Bernard  
T.M. Roper  
Van Core Bowman  
Van Horn Roper  
W.P. Special  
1958 Wade  
War Bonnet Roper  
Weatherly  
Western Side Saddle  
Will James  
Low Association  
Improved T.M. Roper  
Form Fitter  
Tipton

Wilson Roper  
Trail Rider  
Klenda Roper  
Denny Hunt  
Arabian  
Leg Cut T.M. Roper  
Perry Ivory  
Stockman Cutting Horse  
Rocky Mountain Roper  
Rowell Bowman  
San Angelo Cutting Horse  
Black Hawk Roper  
Leg Cut Low Down Roper  
Sonny Wright  
Ellensburg  
Sonny Davis  
Low Down Roper  
California Roper  
Wade  
Low Ivory  
Pony Express  
Arizona T.M. Roper  
Fits Better  
Elbo Barrel Racer  
Quarter Horse Roper  
All Around  
Curtis Roper  
Dean Oliver  
Standard Association  
Rudy Roper  
37  
Rodeo Association  
Elbo Cutting Horse  
Tucson Roper

# HERCULES SADDLE TREE CO.

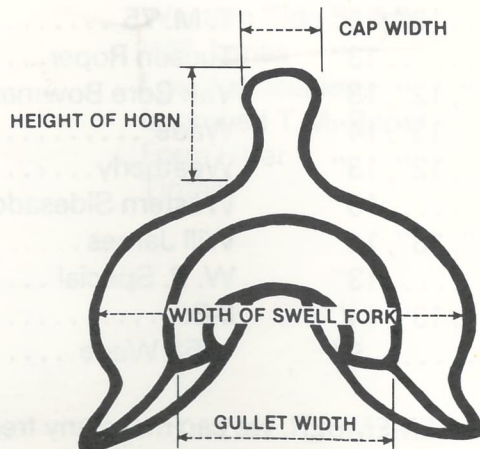
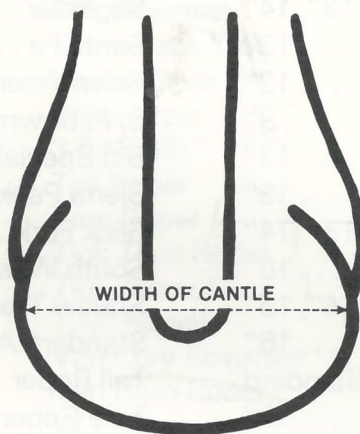
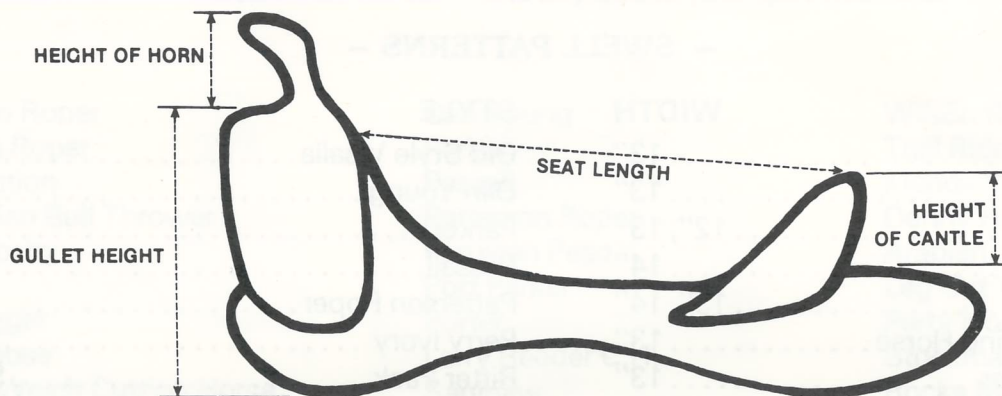
## — SWELL PATTERNS —

STYLE	WIDTH	STYLE	WIDTH
Arizona Roper	13"	Old Style Visalia	9"
Black Hawk Roper	13"	Olin Young	13"
Bob Crosby	12", 13"	Parker	14", 15"
Bronk Association	14"	Passall	13", 14"
Bull Moose	13", 14"	Patterson Roper	13"
Buster Welch Cutting Horse	13"	Perry Ivory	13"
Buster Welch Roper	13"	Ritter Pack	Standard
Butch Cassidy	9"	Rocky Mt. Roper	13½"
Cahill Roper	9", 10"	Rowell Bowman	13"
California Roper	11", 12", 13", 14"	Rudy Roper	13"
Chuck Shepherd	11", 12", 13", 14"	Saginaw	13"
D. R. Roper	13"	Santa Fe	9"
Dee Pickett	13"	Schweitzer	13"
Denny Hunt	9"	S. F. Bowman	11", 12", 13", 14"
Dina Special	13"	Sid Special	14"
Elbo	13"	Sierra Pack	Standard
Ellensburg	13", 14"	Slick Fork	9"
F. L. Roper	10"	South West Roper	10"
Form Fitter	14", 15"	Squaw Tree	Standard
Freemont	15"	Standard Association	14"
Hawaiian	Standard	Tall Roper	13"
Inbetween Roper	13"	Tare Roper	13"
Improved Association	14"	Tick Tock Roper	12½", 13", 14"
Kernal Koon Kutter	14"	Tipton	14"
Larry Reeder	13"	T. M. Roper	13"
Lee Robinson	12", 13"	T. M. 75	13"
Lieuellen	13"	Tucson Roper	13"
Little Wonder	11", 12", 13"	Van Core Bowman	12", 13", 14"
Low Association	13", 14"	Wade	9"
Low Down Roper	12", 13"	Weatherly	9"
Low Ivory	13"	Western Sidesaddle	Standard
Low Moose	11", 13", 14"	Will James	13", 14"
Martha Josey Barrell Racer	13"	W. P. Special	13"
Modified Association	13", 14"	3-B.	9"
Old Mexico	9"	1958 Wade	9", 10"

Many more styles are available. REMEMBER, we can make any tree to your exact specifications.



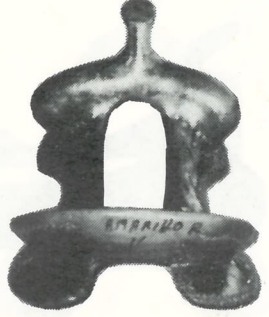
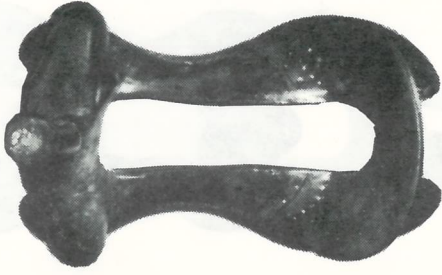
- HOW TO MEASURE A SADDLE TREE -



- SADDLE TREES -

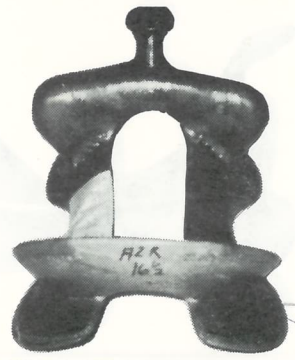
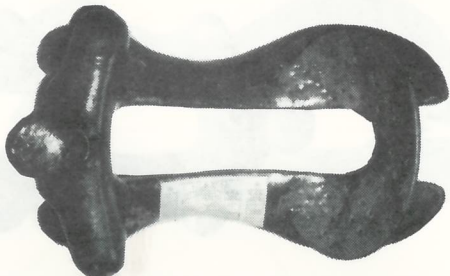
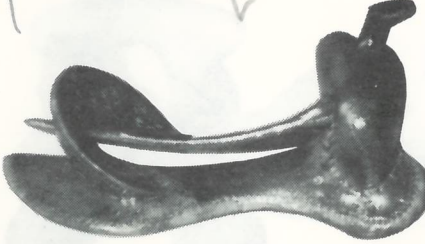
AMARILLO ROPER

*Low Down  
Roper*

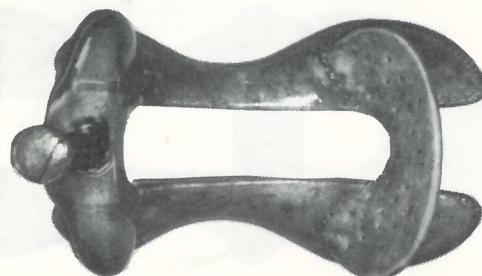
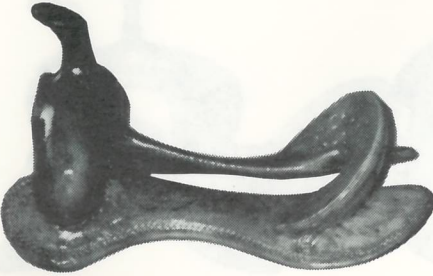


ARIZONA ROPER

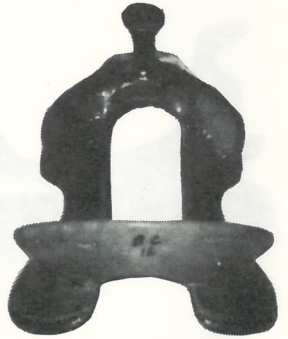
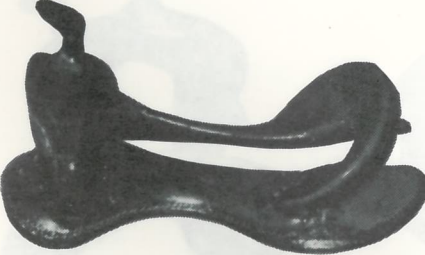
*Tucson  
with  
No  
lip*



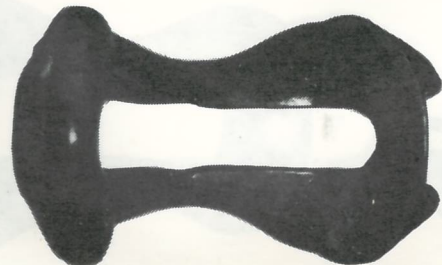
ASSOCIATION



BOB CROSBY



BRONK



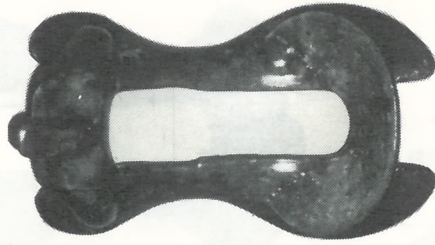


---

- SADDLE TREES -

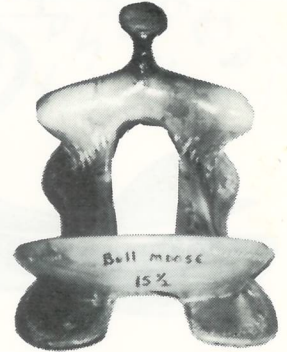
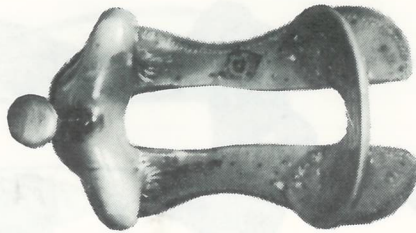
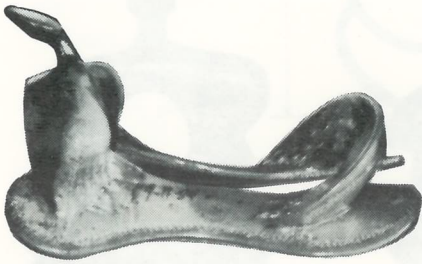
---

BULLDOGGER



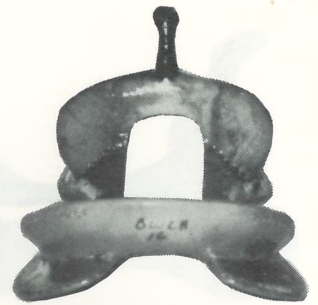
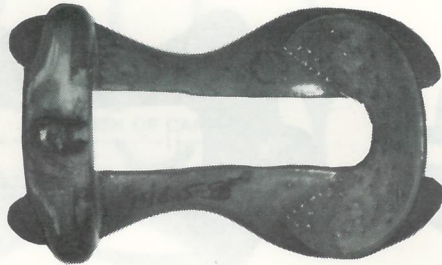
---

BULL MOOSE



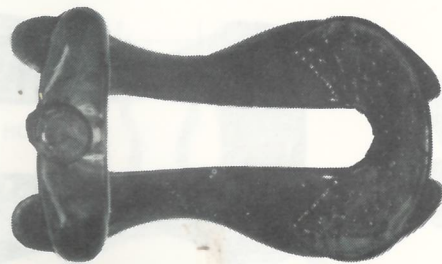
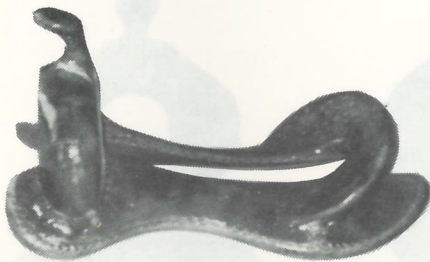
---

BUSTER WELCH CUTTING HORSE



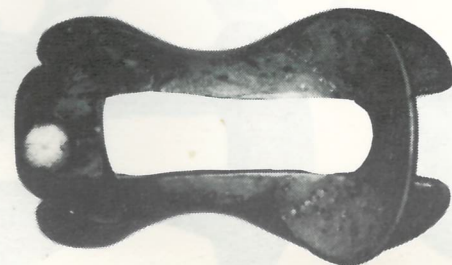
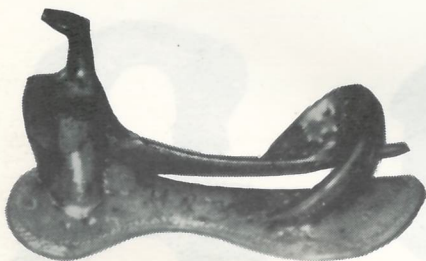
---

BUSTER WELCH ROPER



---

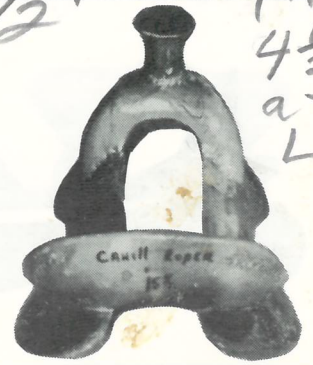
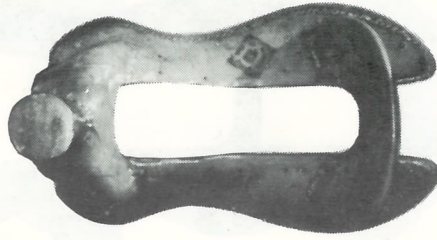
BUTCH CASSIDY



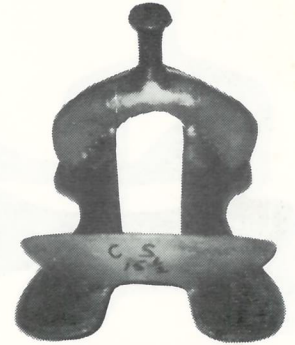
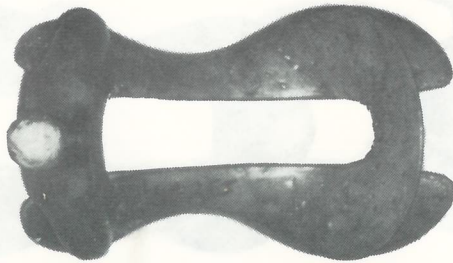
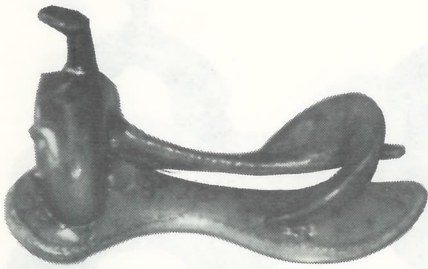
- SADDLE TREES -

CAHILL ROPER

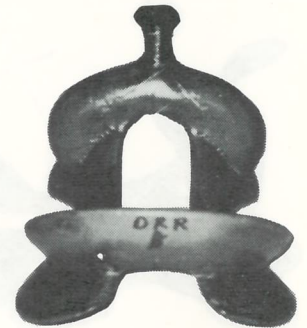
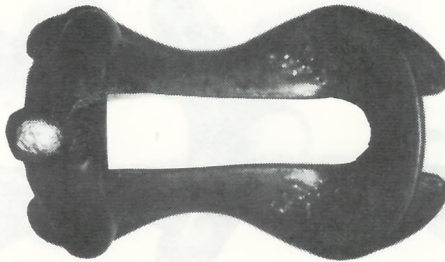
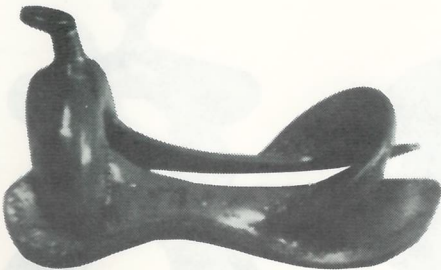
Build Like FL Roper only  $\frac{1}{2}$  inch thicker



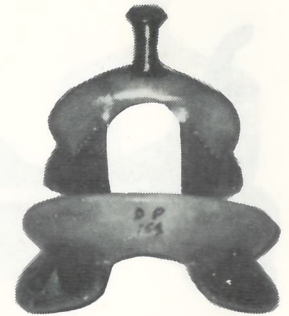
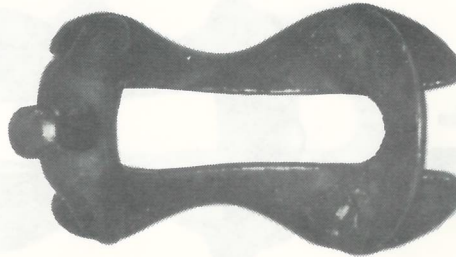
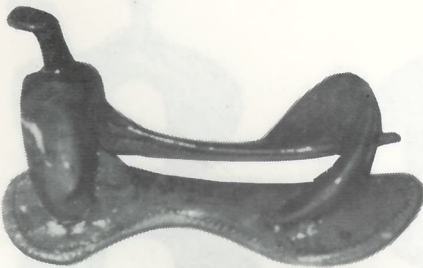
CHUCK SHEPARD



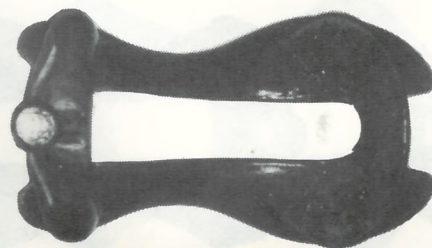
D.R. ROPER



DEE PICKETT



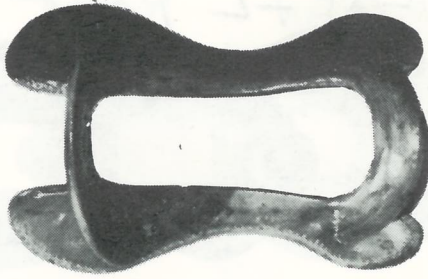
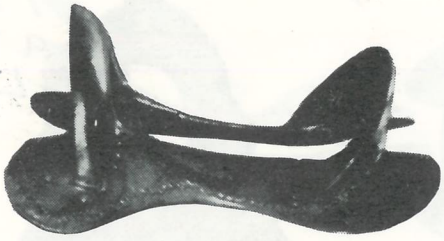
DINA SPECIAL



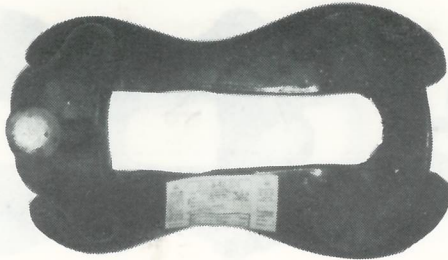
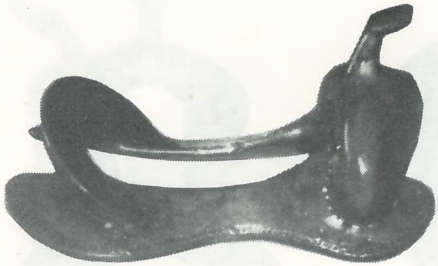


- SADDLE TREES -

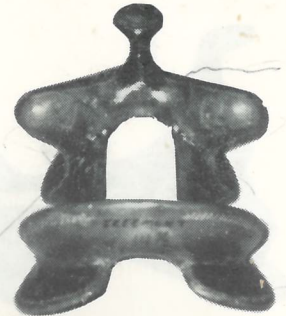
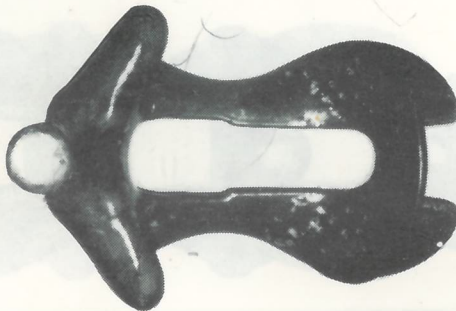
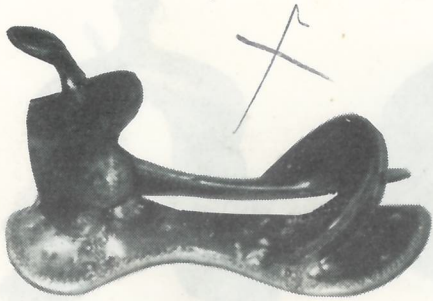
ENDURANCE



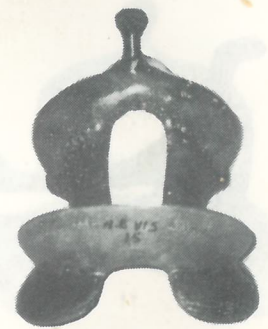
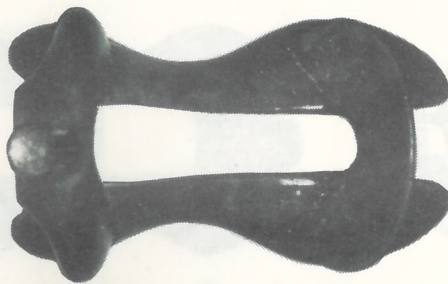
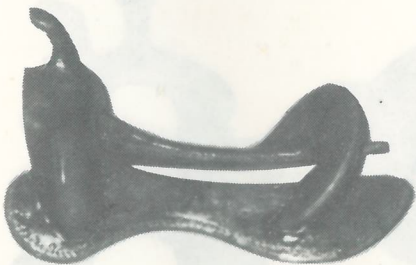
F.L. ROPER



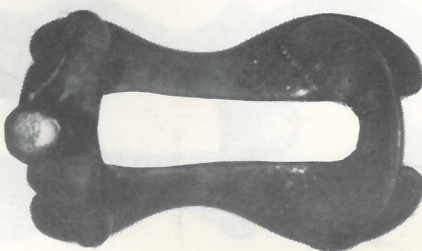
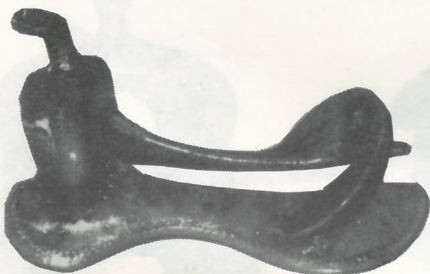
FREEMONT



HALF BREED VISALIA



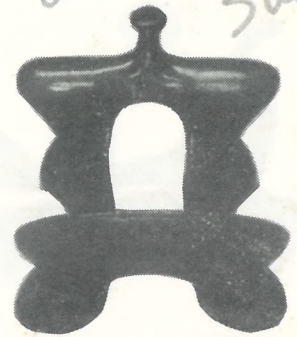
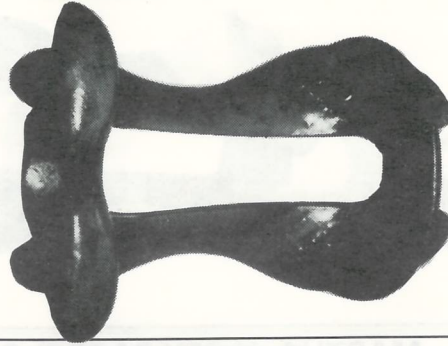
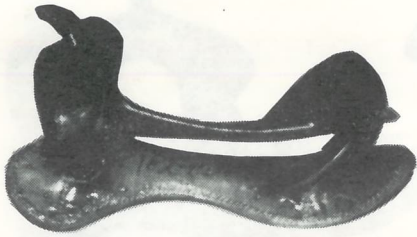
INBETWEEN ROPER



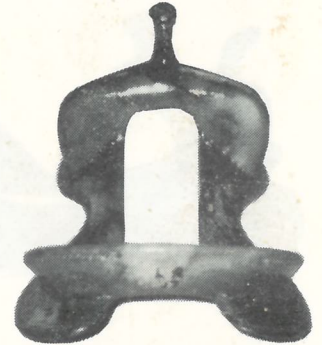
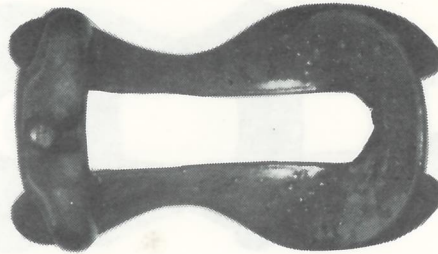
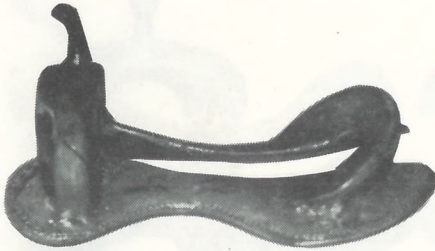


- SADDLE TREES -  
KKK (KERNAL KOON KUTTER)

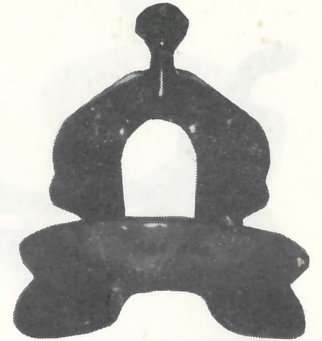
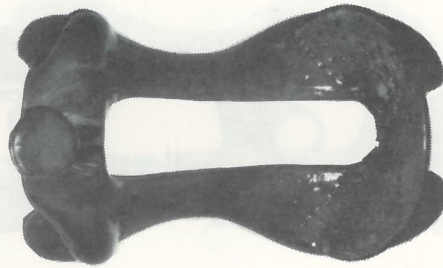
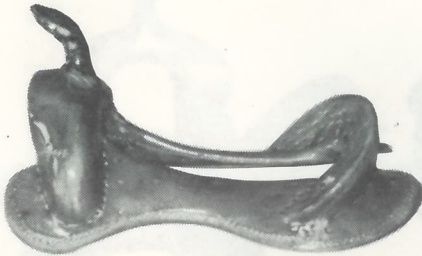
*Little wonder  
with back  
sweep*



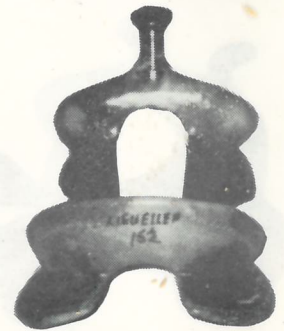
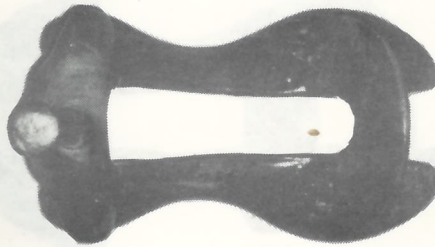
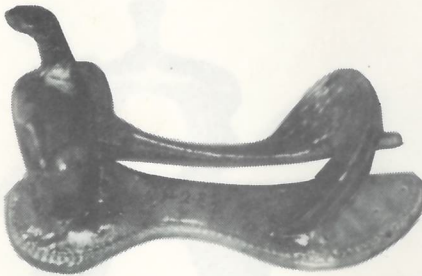
LARRY REEDER CUTTING HORSE



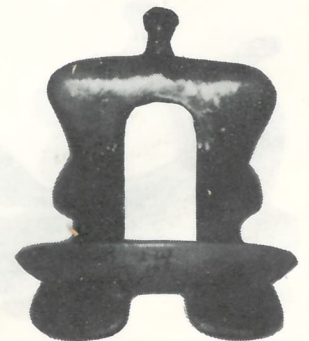
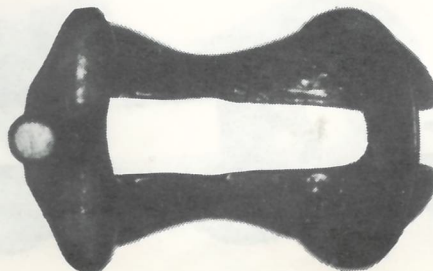
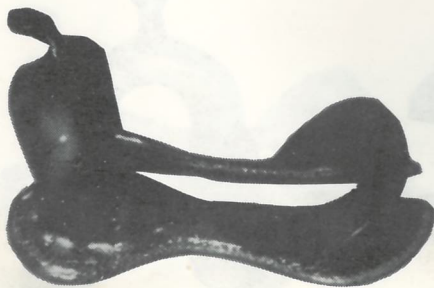
LEE ROBINSON



LIEUALLEN



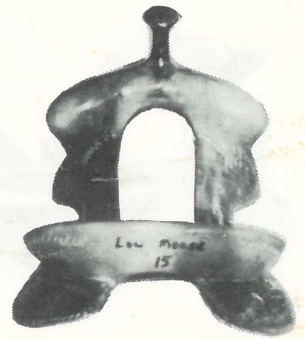
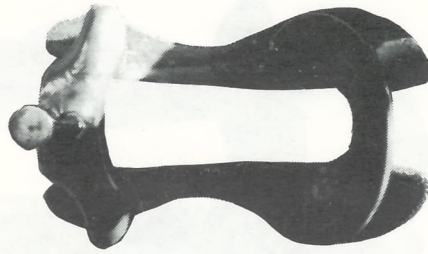
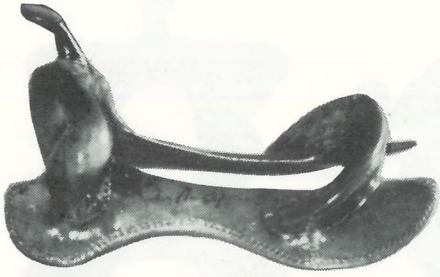
LITTLE WONDER



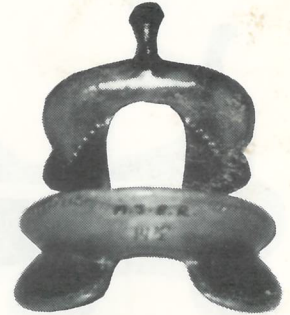
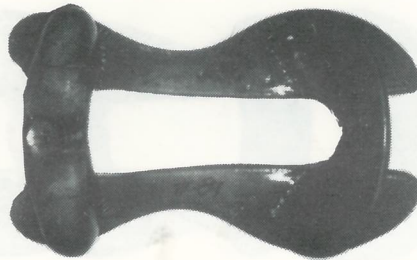
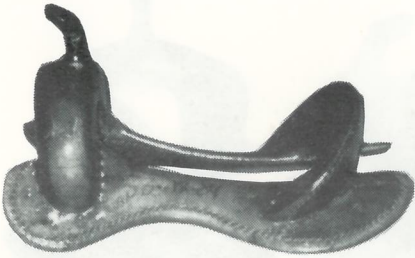


- SADDLE TREES -

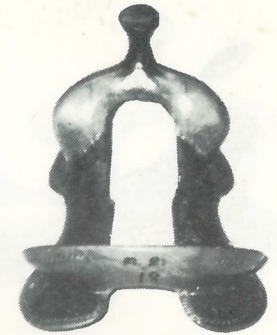
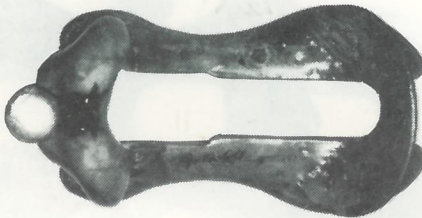
LOW MOOSE



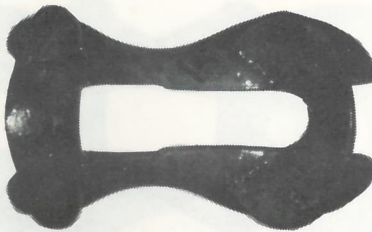
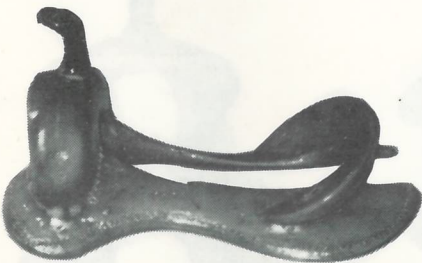
MARTHA JOSEY BARREL RACER



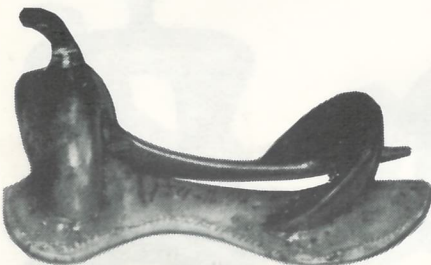
MECHAM ROPER



MODIFIED ASSOCIATION

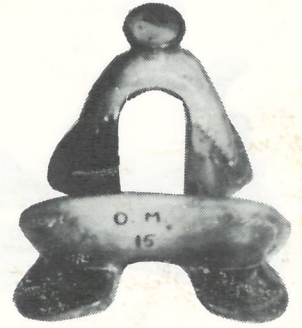
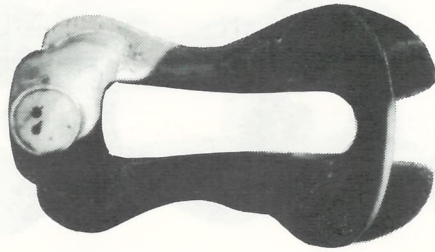
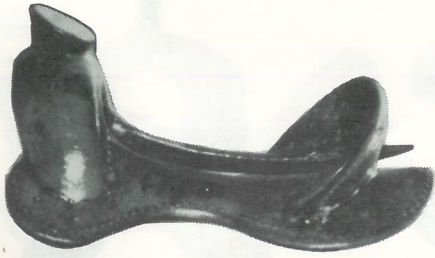


NEW SOUTH WEST ROPER

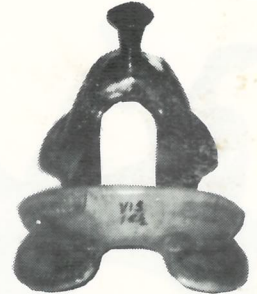
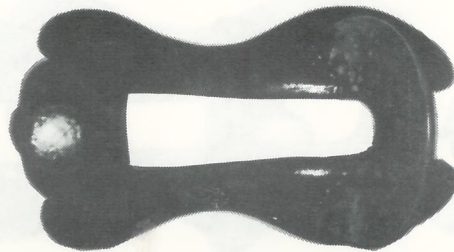


- SADDLE TREES -

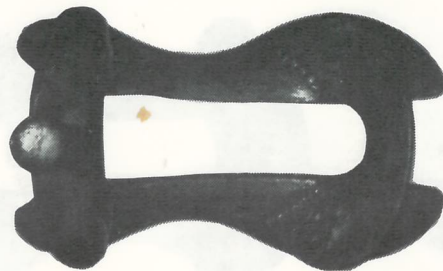
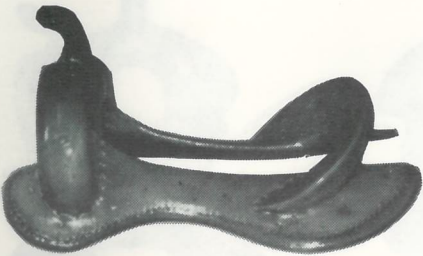
OLD MEXICO



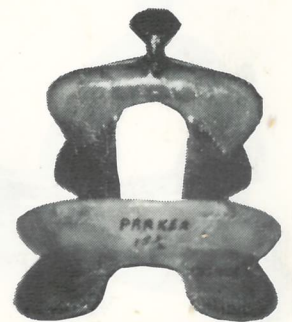
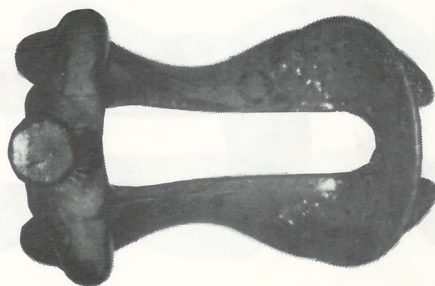
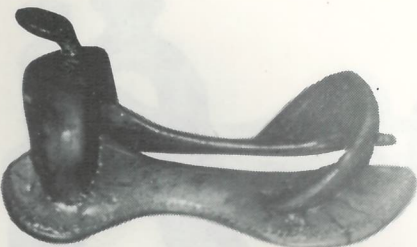
OLD STYLE VISALIA



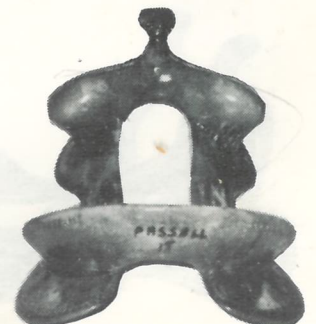
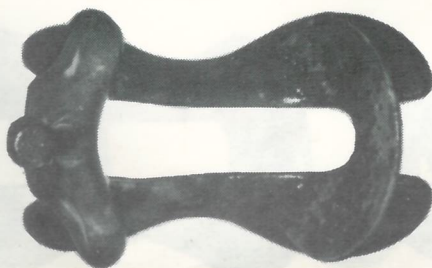
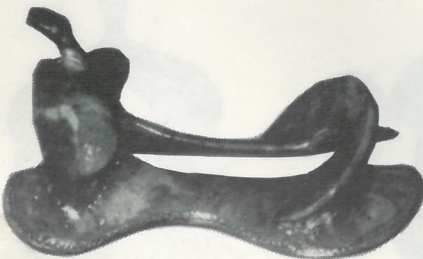
OLIN YOUNG



PARKER



PASSALL

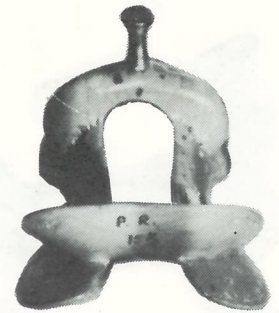
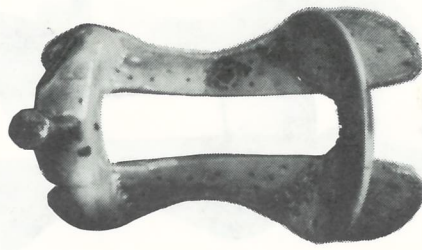
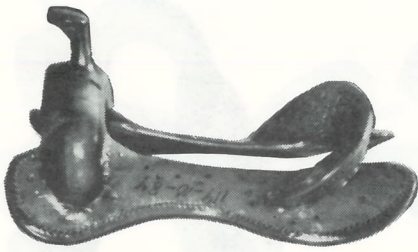




---

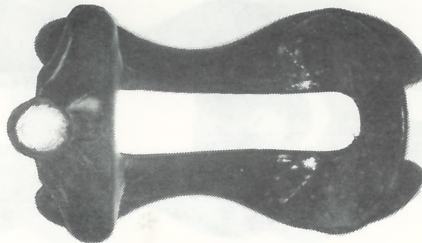
**- SADDLE TREES -**  
**PATTERSON ROPER**

---



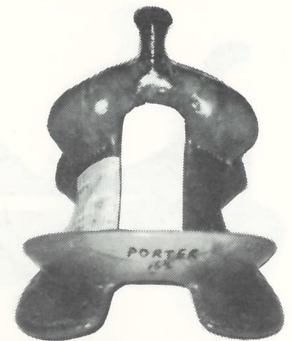
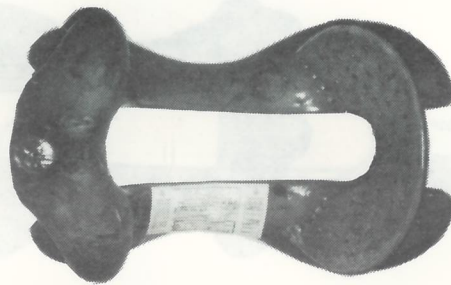
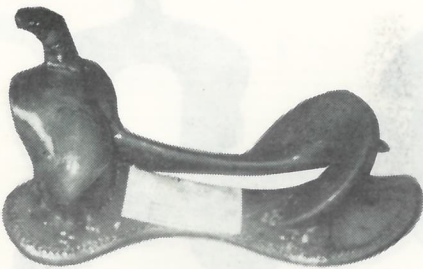
---

**PORT PARKER**



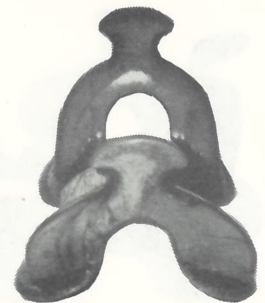
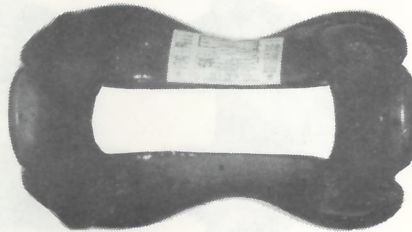
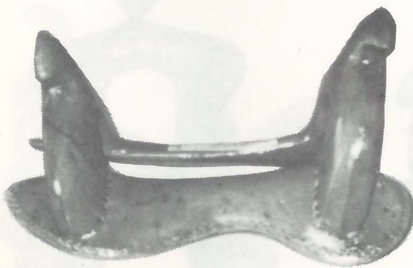
---

**PORTER**



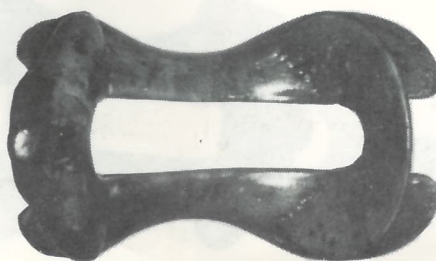
---

**RITTER PACK TREE**



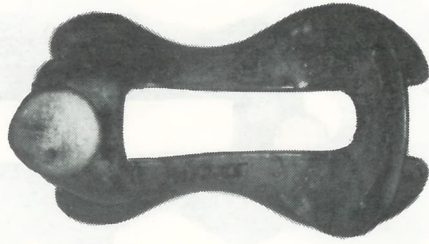
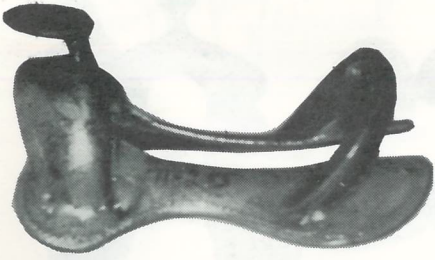
---

**SAGINAW**

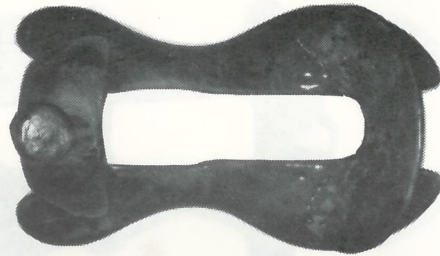
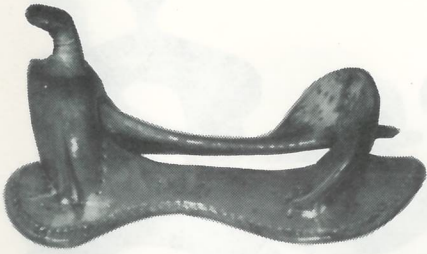


- SADDLE TREES -

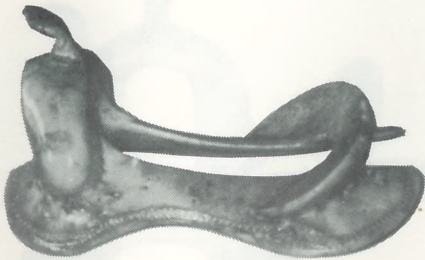
SANTA FE



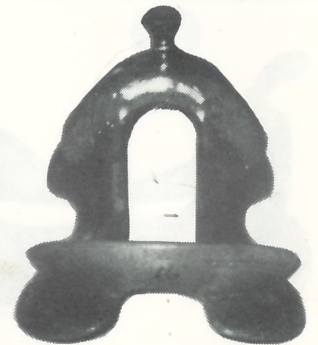
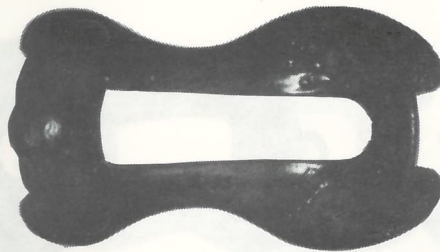
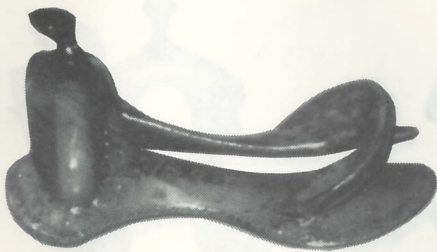
SLICK FORK



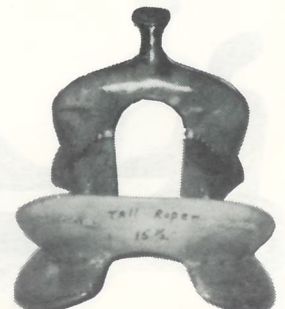
S.F. BOWMAN



SCHWEITZER



TALL ROPER

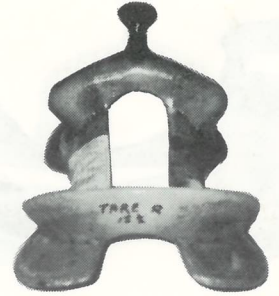
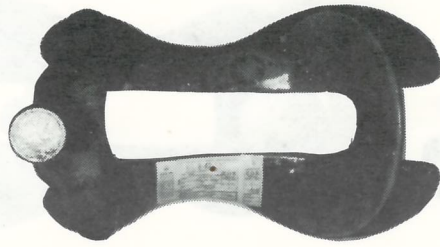
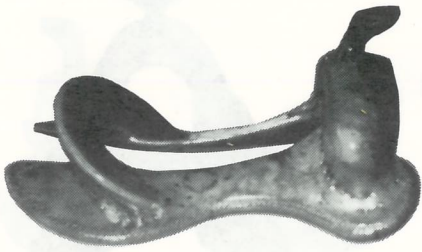




---

- SADDLE TREES -  
TARE ROPER

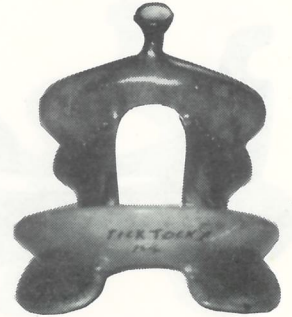
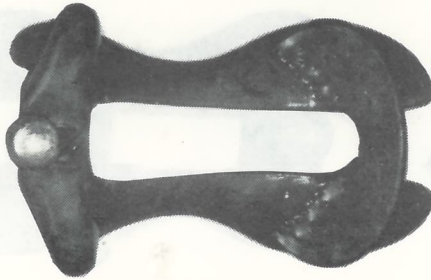
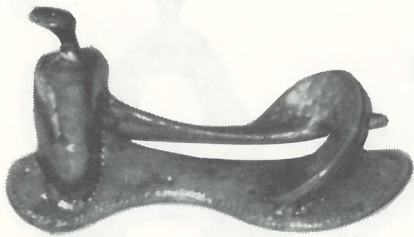
---



---

TICK TOCK ROPER

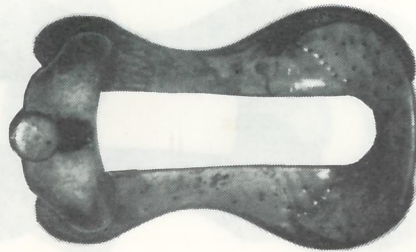
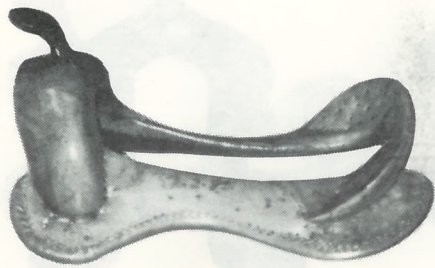
---



---

TIM BERNARD

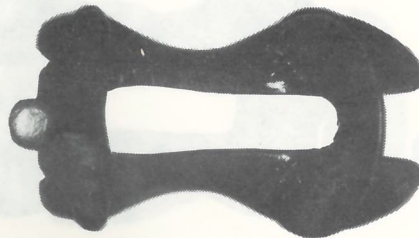
---



---

T.M. ROPER

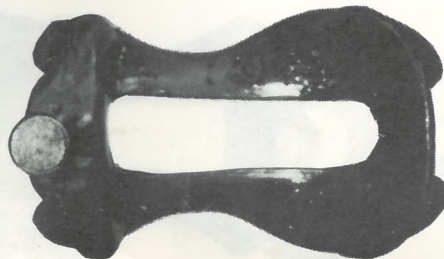
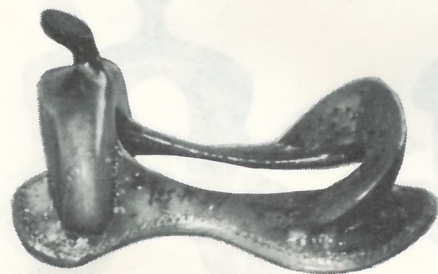
---



---

VAN CORE BOWMAN

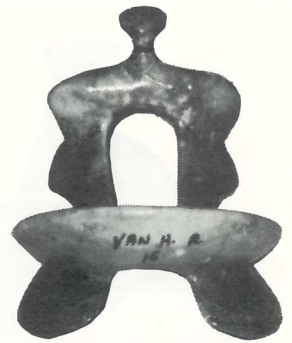
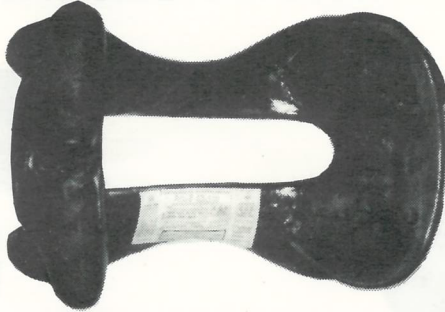
---



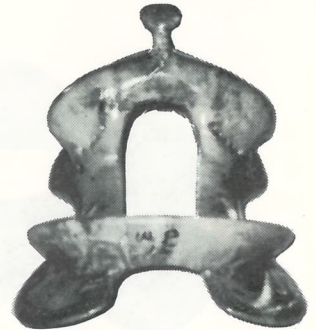
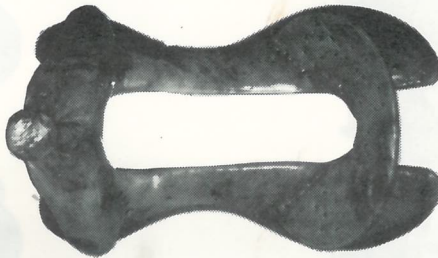
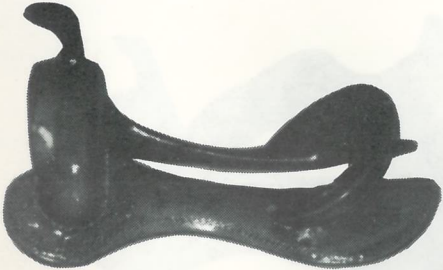
Arizona  
Roper  
No Lay  
No backsway

- SADDLE TREES -

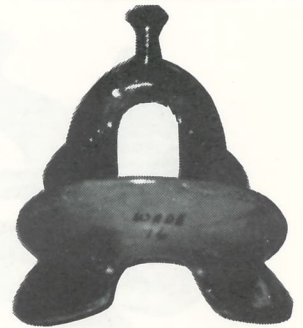
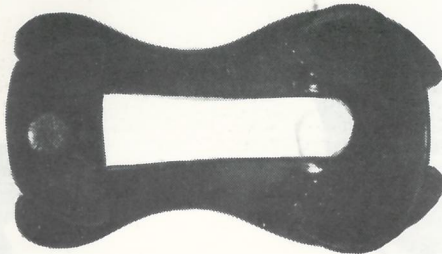
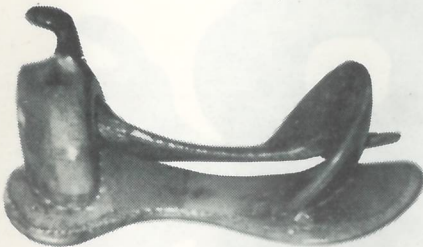
VAN HORN ROPER



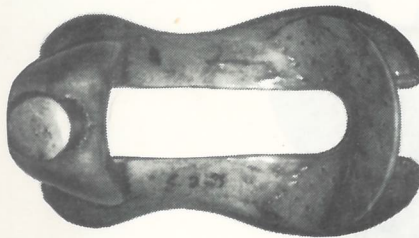
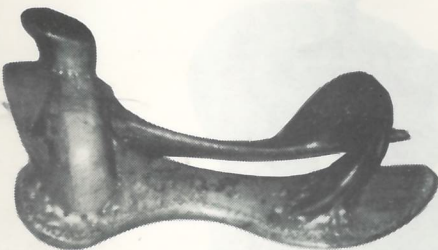
W.P. SPECIAL



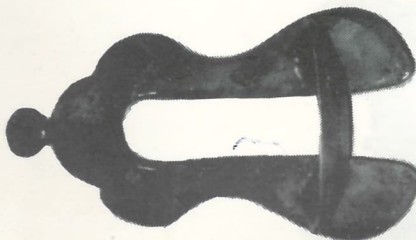
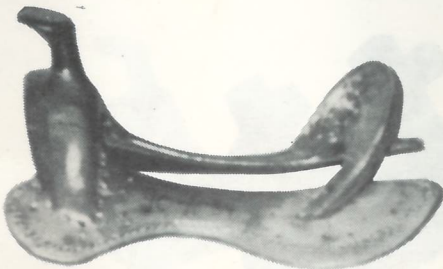
WADE



1958 WADE WITH WOOD POST



WEATHERLY

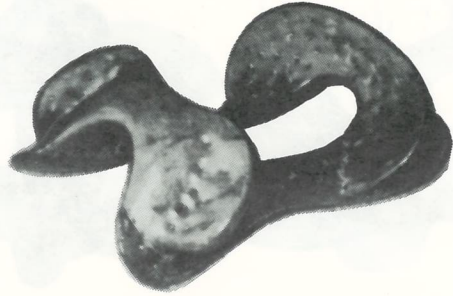
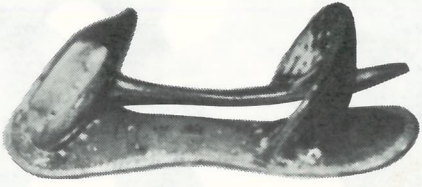




---

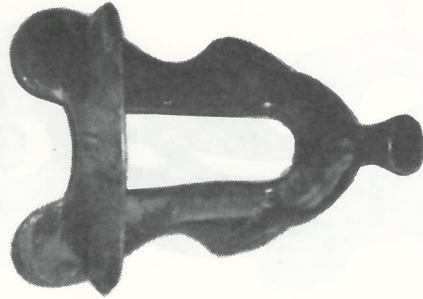
**- SADDLE TREES -**  
**AUSTRALIAN BULL THROWER**

---



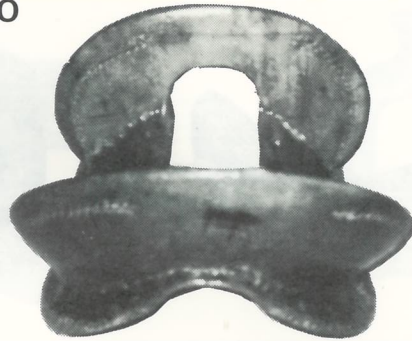
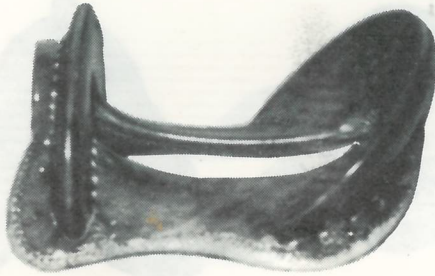
---

**HAWAIIAN**



---

**PERUVIAN PESO**



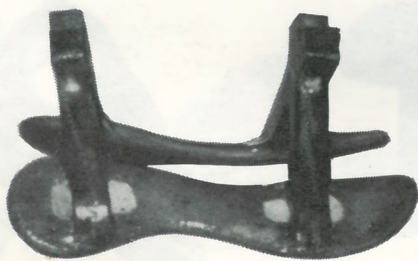
---

**SID SPECIAL**



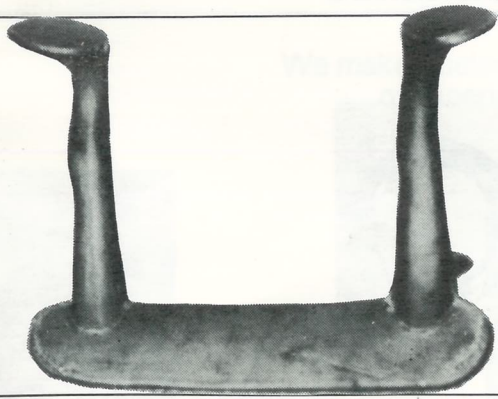
---

**SIERRA PACK TREE with Full Rawhide Cover**

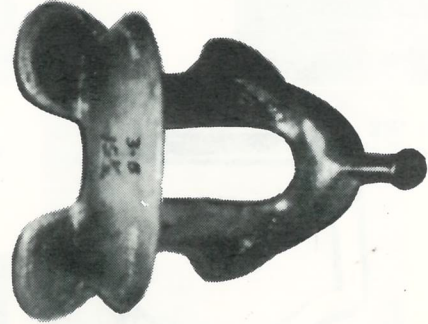
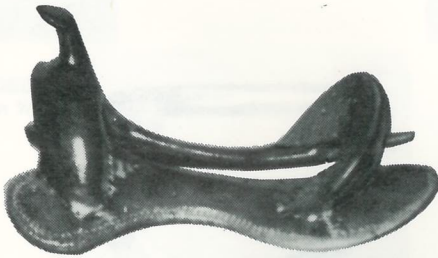


- SADDLE TREES -

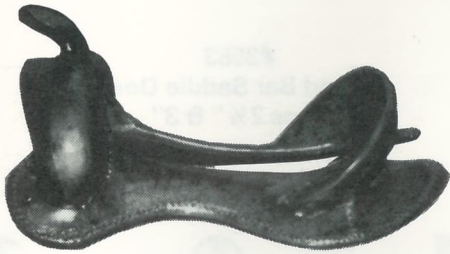
SQUAW TREE



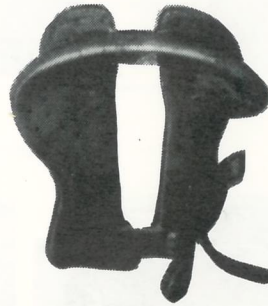
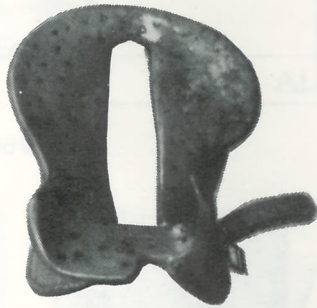
3-B VISALIA



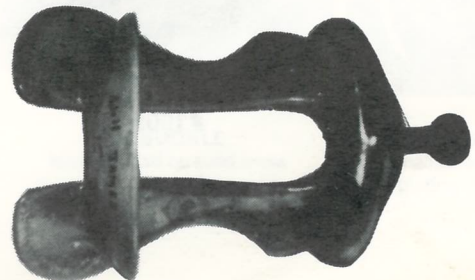
WAR BONNET ROPER



WESTERN SIDE SADDLE



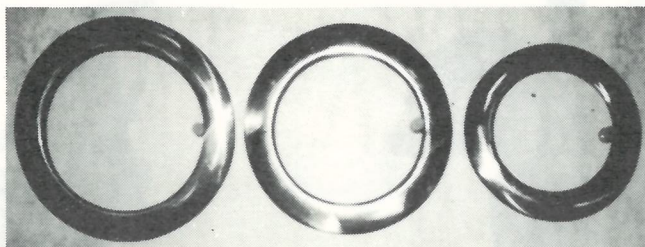
WILL JAMES



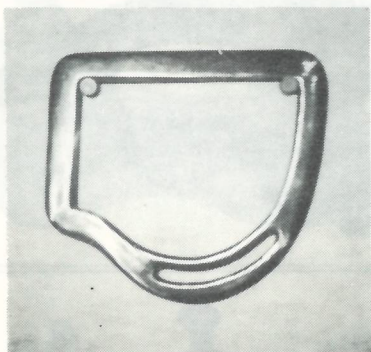


**BRONZE RIGGING PLATES AND RINGS**

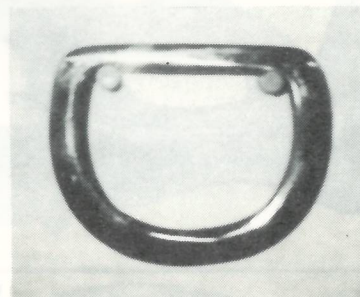
**#500  
FLAT RIGGING RING**



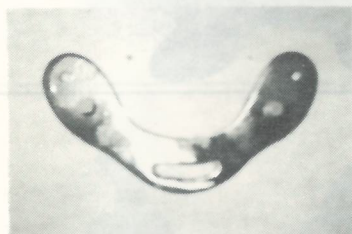
3" X 3/4" Solid Bronze  
3 1/2" X 3/4" Solid Bronze  
4" X 3/4" Solid Bronze



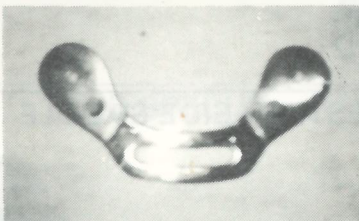
**E. Z.  
Rigging Plate  
Solid Bronze**



**#3653  
Round Bar Saddle Dees  
Sizes 2 1/2" & 3"**



**G.D.W.**



**#596  
Powder River**



**#5053**



**#1009**



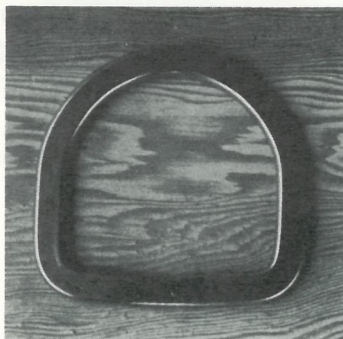
**#1008**

## STAINLESS STEEL HARDWARE

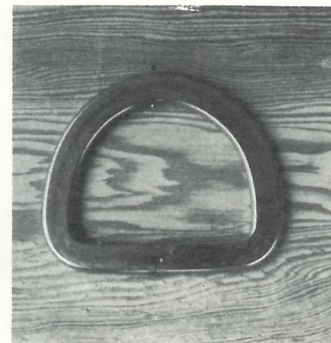
We make a selection of stainless steel Dees and Buckles of superior quality and fine workmanship.



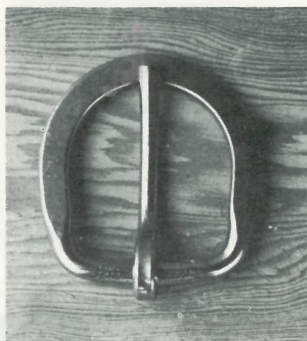
**1 1/4" DEES**  
Made from 1/4" rod



**SADDLE DEES**  
Available in 3" OR 3 1/2" widths.  
Made from 3/8" rod. PLEASE specify size when ordering.



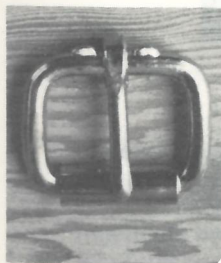
**2 1/2" DEE**  
Made from 3/8" rod.



**1 3/4" HARDWARE**  
Buckle made from 5/16" rod with 1/4" rod used for the tongue (pictured).  
Dee made from 5/16" rod; just like the buckle in design, without the tongue.

## ALL PURPOSE HARDWARE

Domestic and Imported



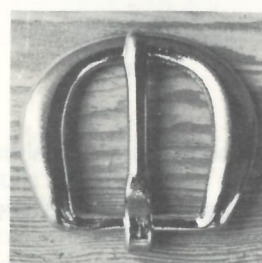
**#999 BUCKLE**  
Made from steel rod and nickel-plated for a shiny finish, with loose roller.



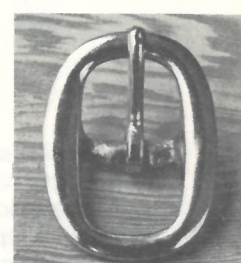
**#210 BUCKLE**  
A cast, malleable iron Con-way buckle, with nickel-plating for a shiny finish.



**#121 BUCKLE**  
A shiny, nickel-plated buckle.



**#5 BUCKLE**  
Nickel-plated on solid brass



**#5705 BUCKLE**  
Cast, malleable iron with nickel-plating for a shiny finish.



---

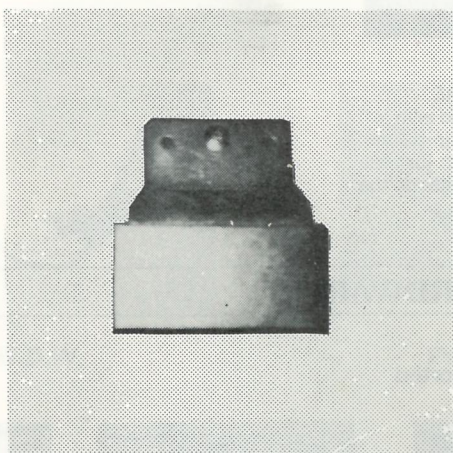
## ACCESSORIES

---

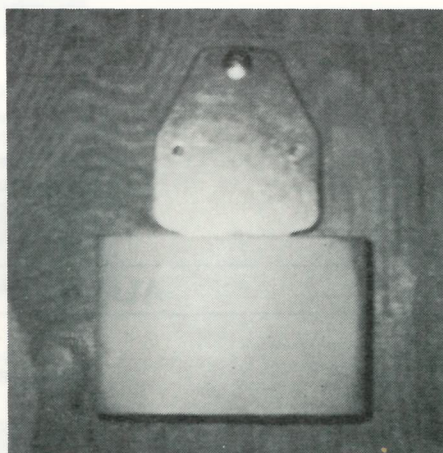


**SEAT PLATE**  
Galvanized Steel  
X9-8 — Quarter Horse

### BLEVINS QUICK CHANGE STIRRUPS BUCKLES



**Regular**



**Improved**

The Blevins stirrup buckle is the ideal buckle for rodeos, dude ranches, and riding academies or any place the stirrup length has to be changed. Just slide the sleeve up, adjust the tongue to the desired length, and slide the sleeve back to lock in place. The stirrup length is adjusted quickly and easily without any tools or loss of time.

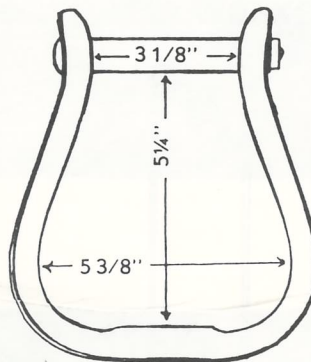
Blevins stirrup buckles are made from top quality materials. The tongues are made from heat-treated aluminum while the sleeves are stainless steel. The aluminum and stainless steel will prevent corrosion and rust under normal conditions. The leather trim is 8 to 9 ounce for long wear. The leather trim also adds protection for the horse or your saddle and blanket.

**NEW — IMPROVED** Blevins Stirrup Buckle. Sleeves are the same as older style. The tongue has no hinge or strap. Tongue rivets between stirrup leather and fender strap, with fender strap being cut shorter than stirrup leather and beveled down thin, allowing stirrup leather to go through sleeve without making a bulge.

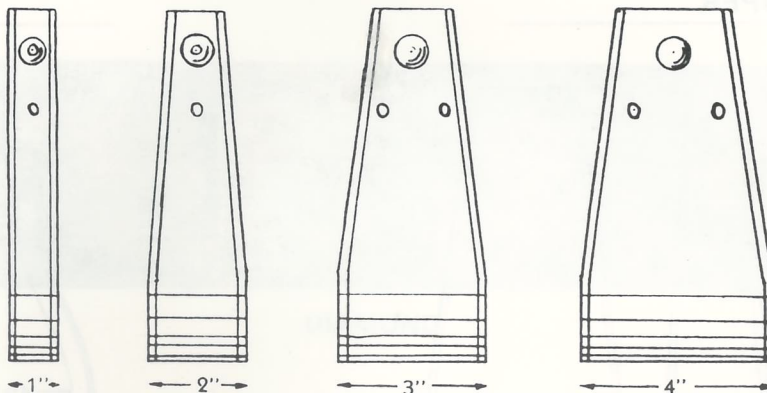
Easy To Mount.

**FRONT VIEW  
OF  
VISALIA  
BELL BOTTOM**

Bound with 30 gauge galvanized steel.  
 $\frac{5}{16}$ " Carriage bolt, plated to resist rust.  
Hex-jam nut (only  $\frac{3}{16}$ " thick). Made from  
 $\frac{7}{16}$ " thick Oak.

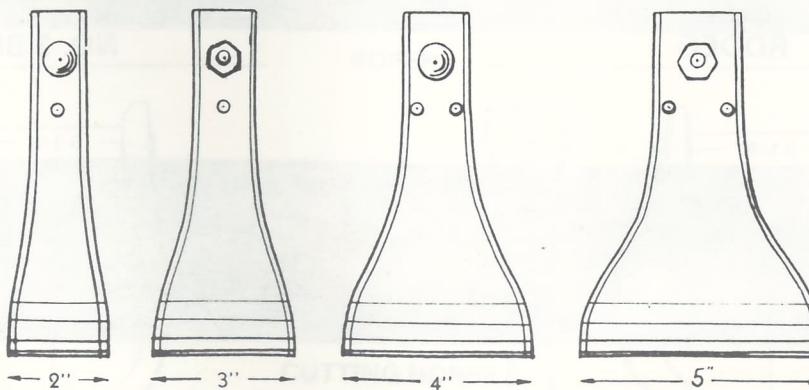


**VISALIA**



Available sizes: 1 1/2", 2", 2 1/2", 3", 3 1/2", 4"

**BELL BOTTOM**

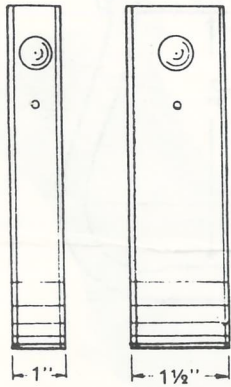


Available sizes: 1 1/2", 2", 2 1/2", 3", 3 1/2", 4"



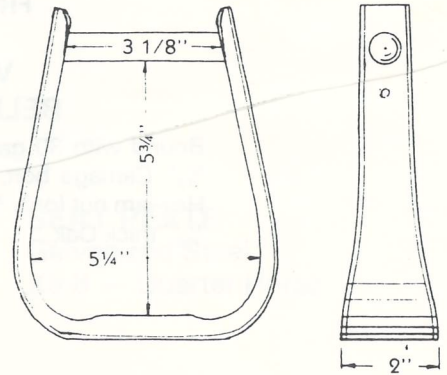
**- STIRRUPS -**

**OXBOW**

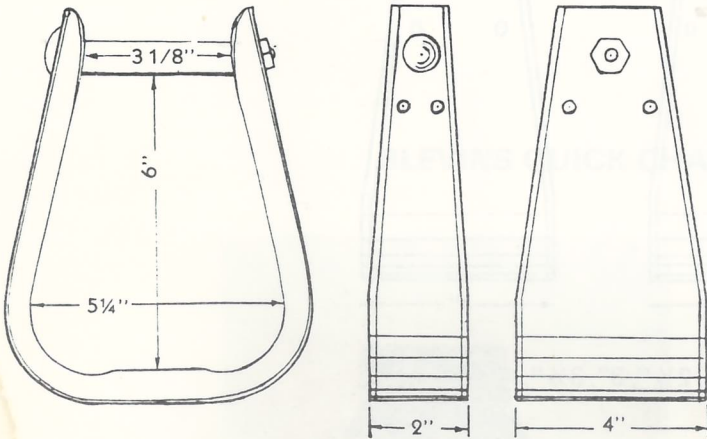


Sizes: 1", 1 1/2", 2", 3"

**CUTTING HORSE**

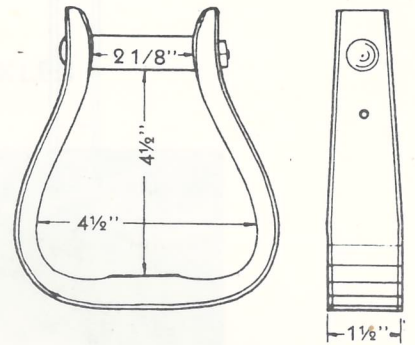


**ROPER**



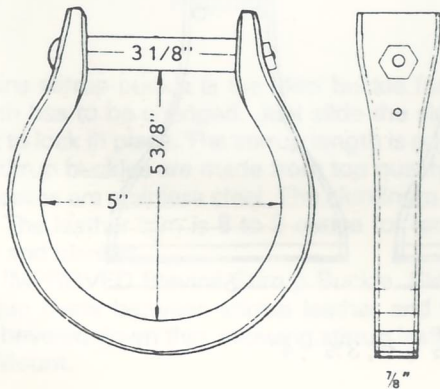
Sizes: 2", 2 1/2", 3", 3 1/2", 4"

**YOUTH**

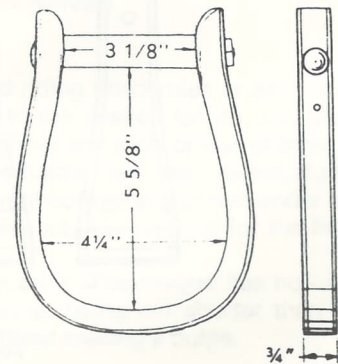


Sizes: 1 1/2", 2", 2 1/2"

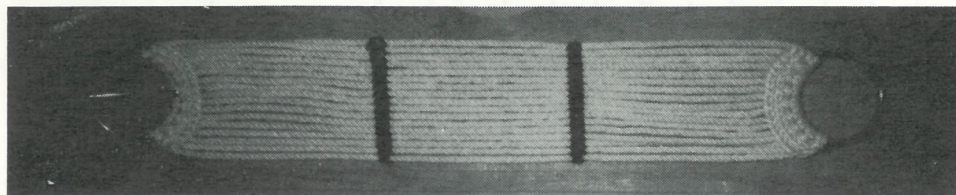
**RODEO**



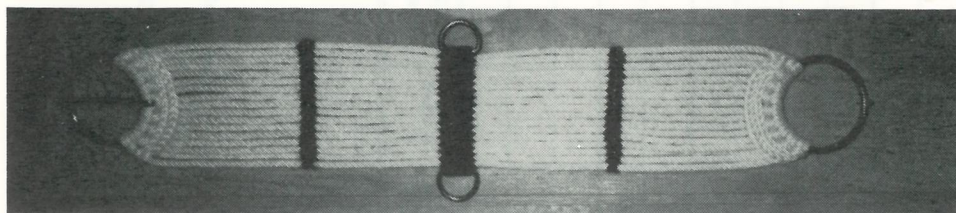
**NO. 3 BRONC**



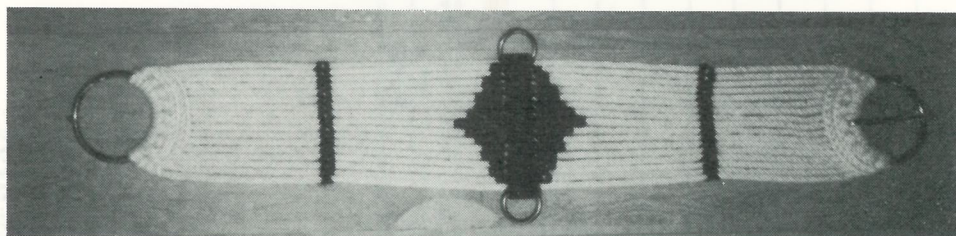
- CINCHES -



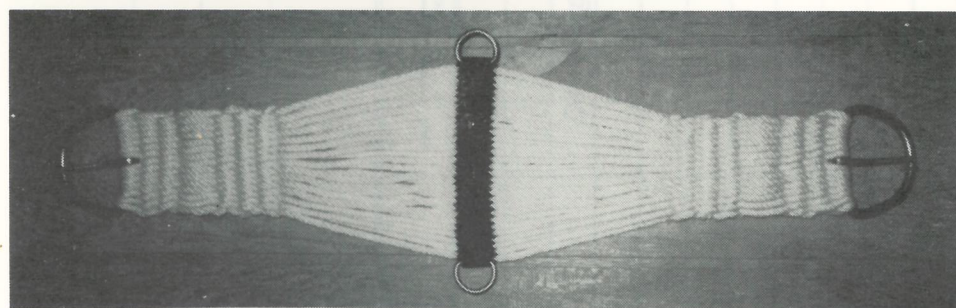
2 BAR



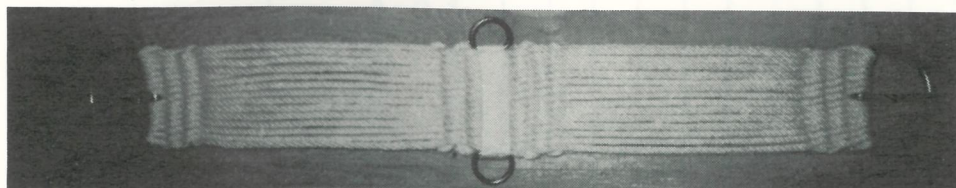
3 BAR



DIAMOND



ROPER



CUTTING HORSE

\*\* Our cinches are made of the finest quality material and workmanship available anywhere.



# HERCULES SADDLE TREE CO., INC.

1030 S. Bowling Alley Lane  
 P.O. Box 966 • Moab, Utah 84532  
 (801) 259-8106

Sold To \_\_\_\_\_ Date Ordered \_\_\_\_\_  
 \_\_\_\_\_ Date Shipped \_\_\_\_\_  
 \_\_\_\_\_

Quantity Ordered	Description	SEAT	SWELL	CANTLE			HORN			GULLET		Cover	Quantity Shipped	Unit Price	Amount
				HEIGHT	DISH	WIDTH	KIND	SIZE OF CAP	HEIGHT	HEIGHT	WIDTH				

*Don't forget bar style*

