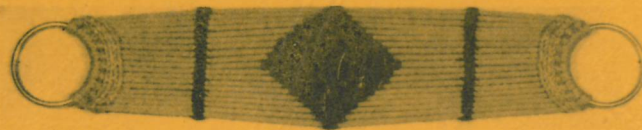


**RITTER
SADDLE
TREE
CO., INC.**

C
A
T
A
L
O
G

1
9
7
7



STAR ROUTE BOX 100
ANTHONY, NEW MEXICO 88021
Phone (915) 877-3191

RITTER SADDLE TREE CO.

Star Route, Box 100
Anthony, New Mexico 88021
Phone: (915) 877-3191

Dear Customer:

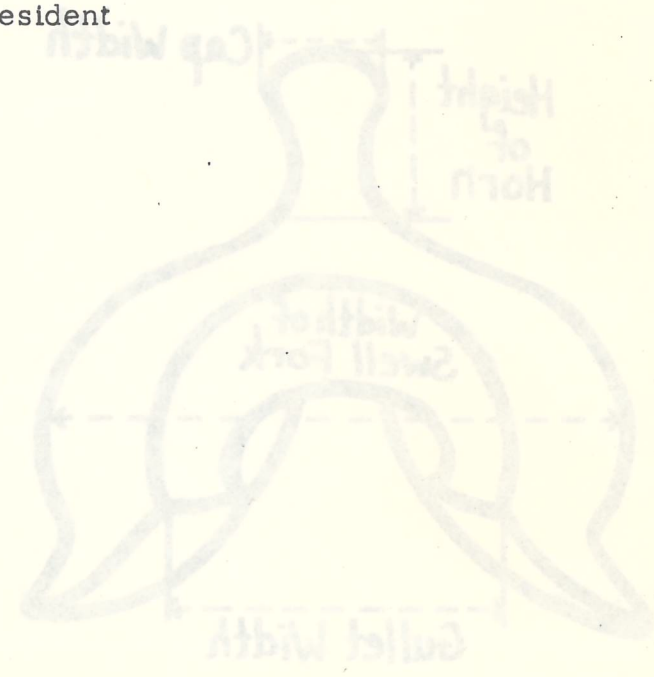
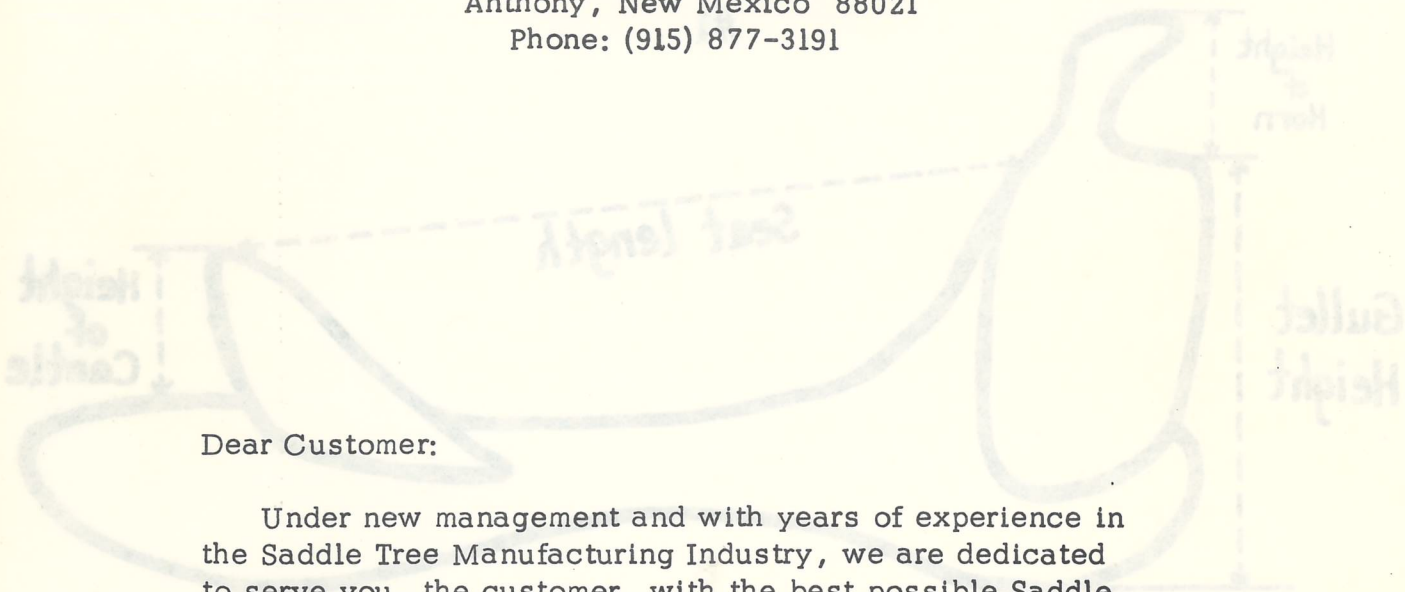
Under new management and with years of experience in the Saddle Tree Manufacturing Industry, we are dedicated to serve you, the customer, with the best possible Saddle Trees made to your specifications.

May we please have your business. Let us show you what we can do.

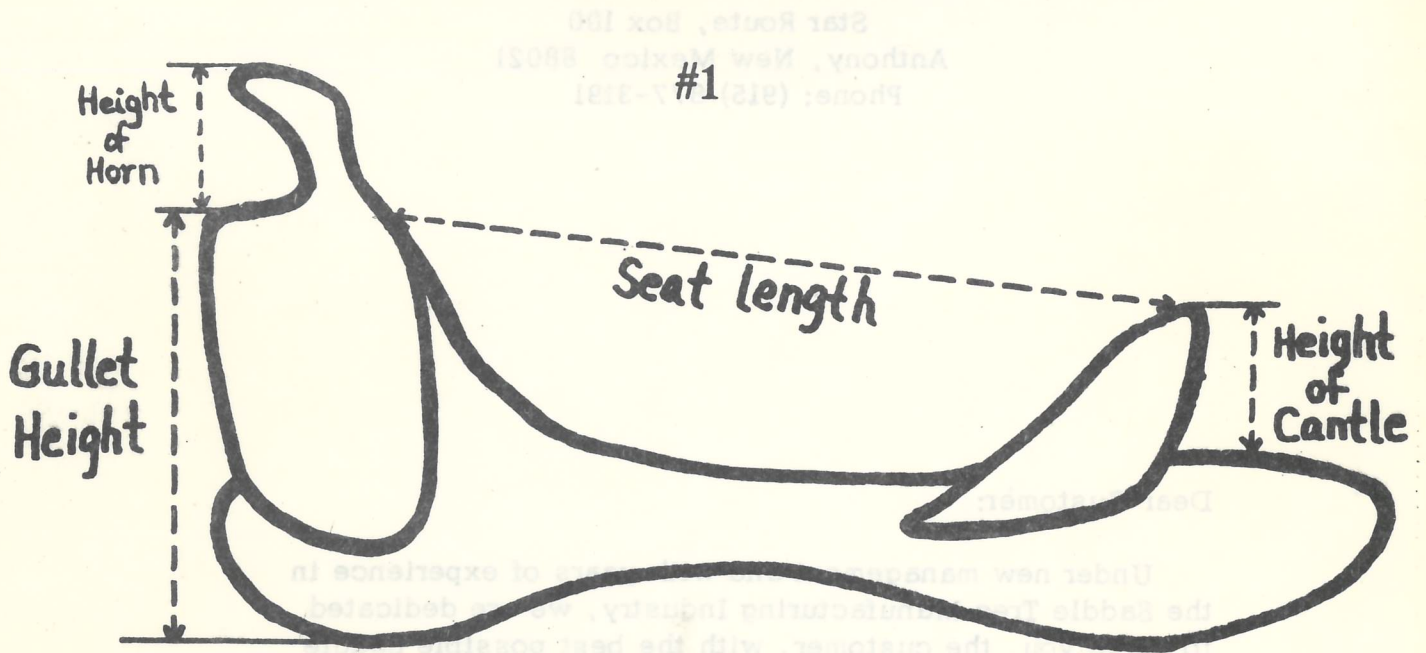
Yours sincerely,

Francis K Bowden

Francis Bowden
President

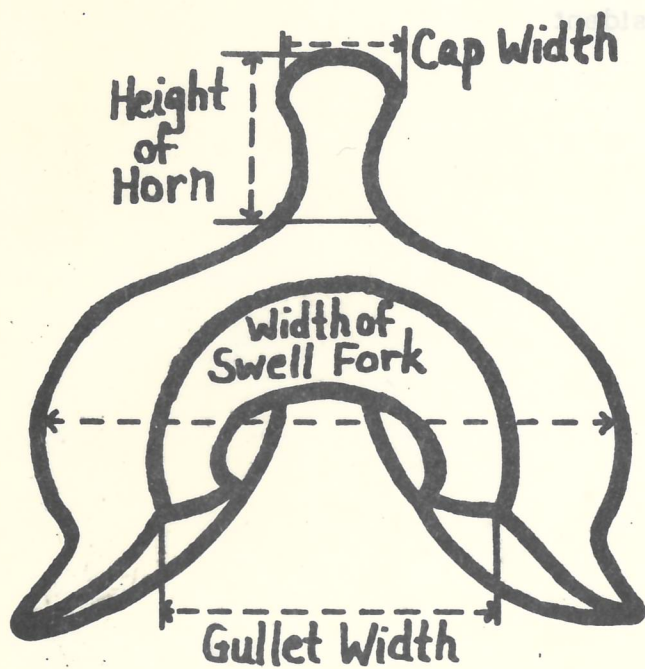


HOW TO MEASURE A SADDLE TREE

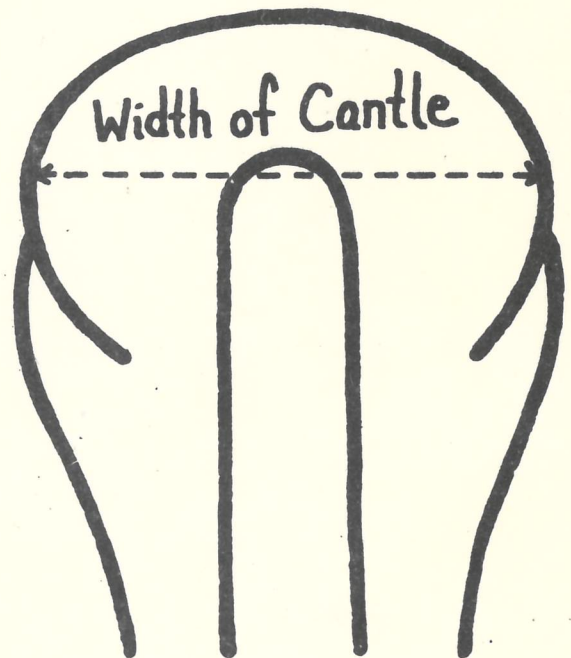


Drawings of Saddle Trees

#2



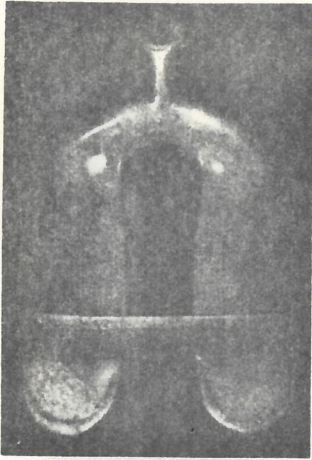
#3



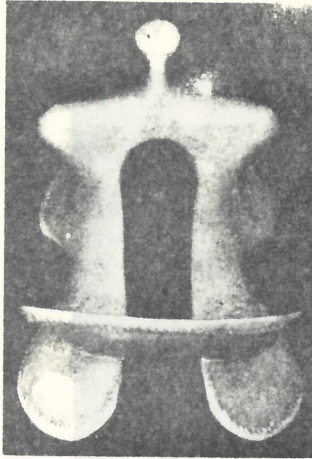
RITTER SADDLE TREE CO.

QUALITY SADDLE TREES

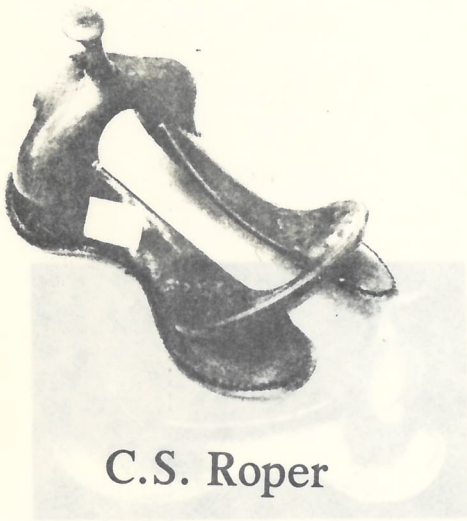
MADE TO
YOUR
SPECIFICATIONS



C.S. Roper

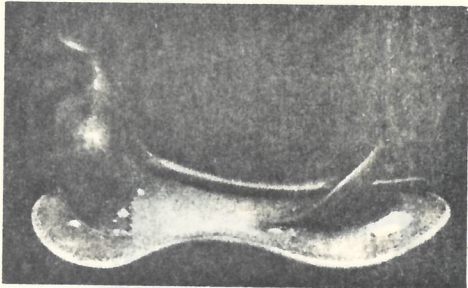


Porter 37



C.S. Roper

Seat: your choice
Front: 12, 13, or 14
Cantle: your choice
Horn: your choice



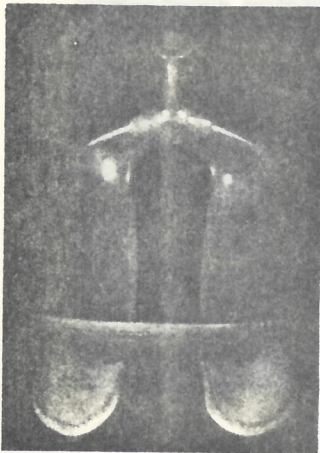
Porter 37

Seat: your choice
Front: 12, 13, 14
Cantle: your choice
Horn: your choice

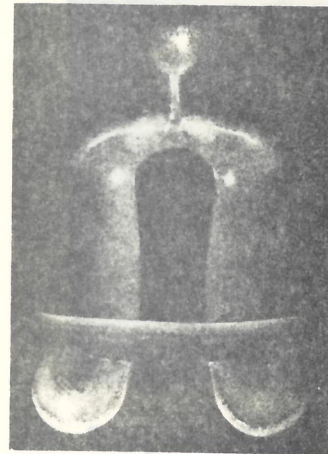
RITTER SADDLE TREE CO.

QUALITY SADDLE TREES

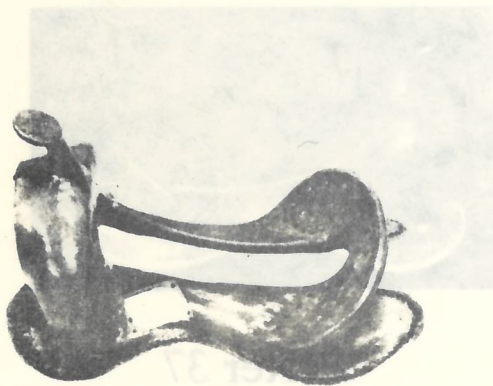
MADE TO
YOUR
SPECIFICATIONS



Sonney Wright Steer Roper

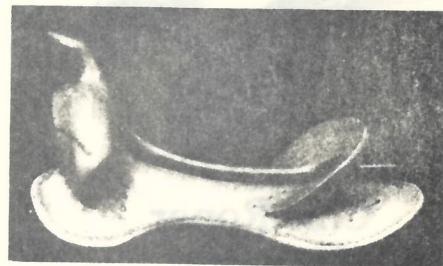


Toots Mansfield Roper



Sonny Wright Steer Roper

Seat: your choice
Front: 12, 13
Cantle: your choice
Cantle: your choice
Horn: your choice
Gullet: 8 high



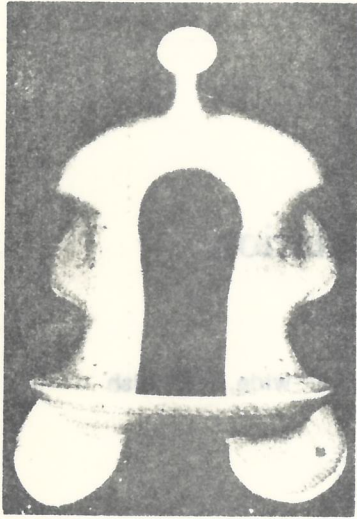
Toots Mansfield Roper

Seat: your choice
Swell: 12'' or 13''
Cantle: your choice
Horn: your choice
Gullet: 7½'' high

RITTER SADDLE TREE CO.

Quality Saddle Trees

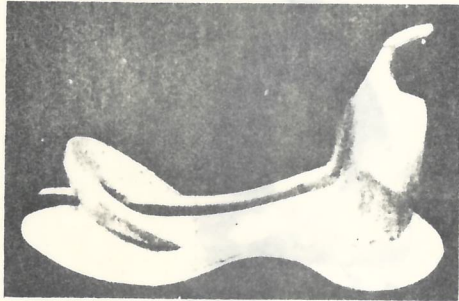
MADE TO
YOUR
SPECIFICATIONS



Youth Toots Mansfield

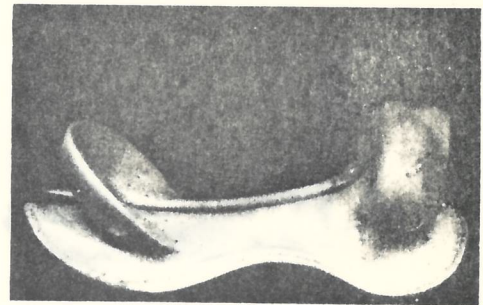


Committee



Youth Toots Mansfield

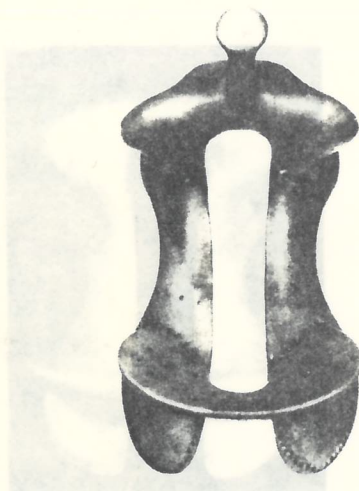
Seat: 12, 13
Front: 11, 12
Cantle: your choice
Horn: your choice
Gullet: 7½ high



Committee

Seat: Your choice
Front: 14
Cantle: 4
Horn: none
Gullet: 9 high

RITTER SADDLE TREE CO.



Low Association

Seat: your choice
 Swell: 14" wide
 Cantle: 4" high, 13" wide, 1½" dish
 Gullet: 8" high



Slick Fork Roper

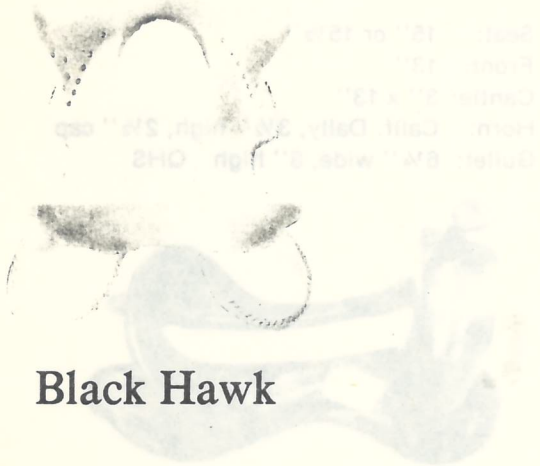
Seat: your choice
 Swell: 9" wide
 Cantle: 3" high, 13" wide, 1" dish
 Horn: Dally 2½" Cap 3¾" high
 Gullet: 8" high



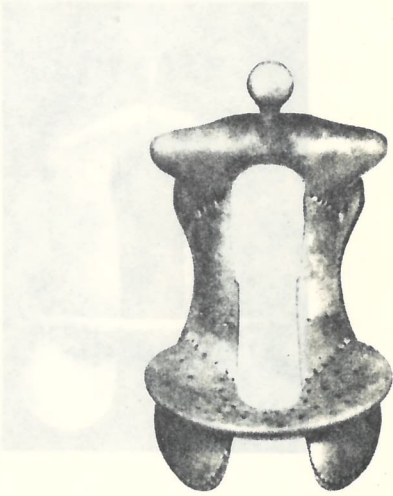
RITTER SADDLE TREE CO.

STOCK TREES

Sonney Wright S. Roper



Black Hawk

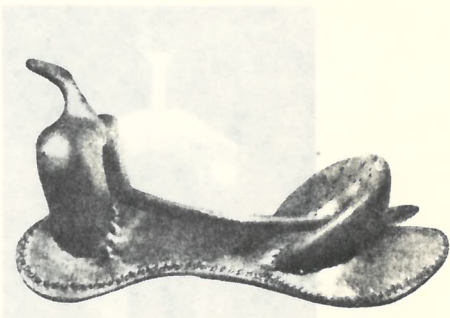


Little Wonder Barrel Racer



Black Hawk

Seat: your choice
 Swell: 13" wide
 Cantle: 3" high, 13" wide, 1" dish
 Horn: #2 3" Cap, 3½" high
 Gullet: 8½" high



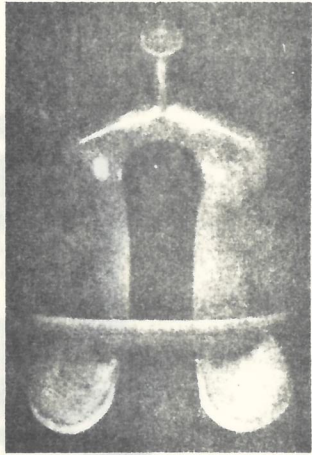
Little Wonder Barrel Racer

Seat: your choice
 Swell: 12" or 13"
 Cantle: your choice
 Horn: your choice
 Gullet: 7½" high

GET THE BEST LENGTH WANTED

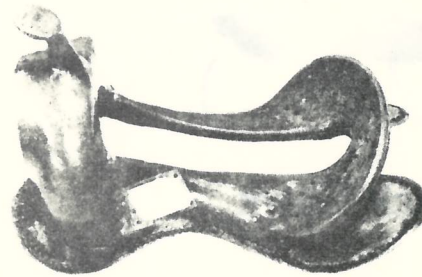
RITTER SADDLE TREE CO.

STOCK TREES



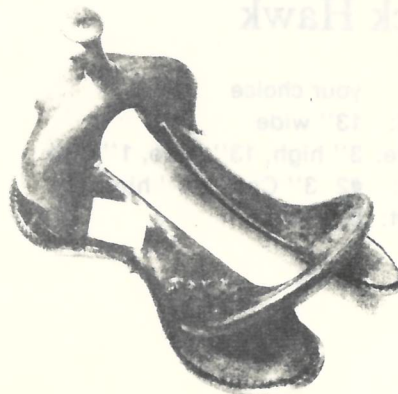
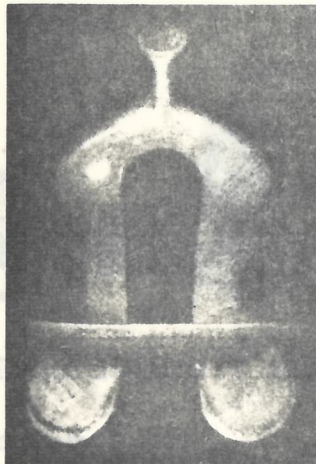
Sonney Wright Steer Roper

Seat: 15'' or 15½''
Front: 13''
Cantle: 3'' x 13''
Horn: Calif. Dally, 3½'' high, 2½'' cap
Gullet: 6¼'' wide, 8'' high QHS



C.S. Roper

Seat: 15'' , 15½'' , or 16''
Front: 13''
Cantle: 3'' x 13''
Horn: Calif. Dally, 3½'' high, 3'' cap
Gullet: 6¼'' wide, 7¾'' high QHS



SPECIFY SEAT LENGTH WANTED

RITTER SADDLE TREE CO.

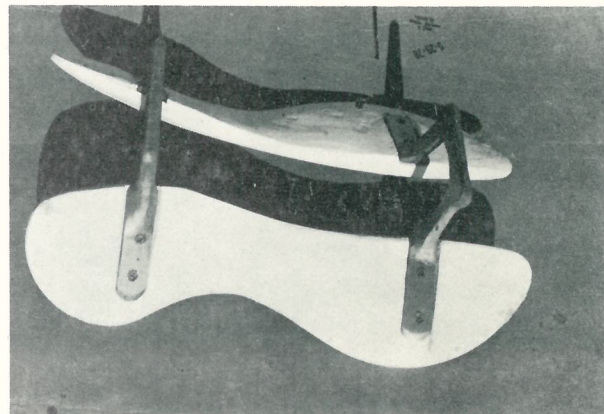
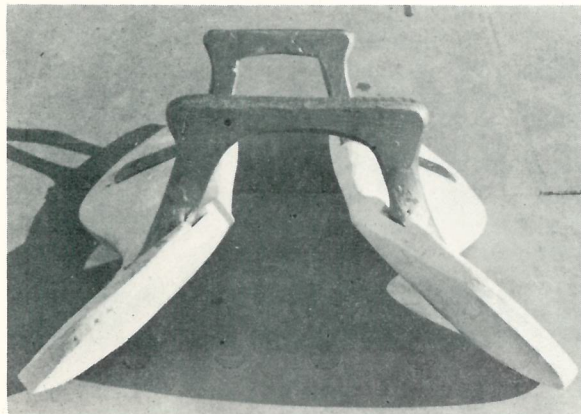
STAR ROUTE BOX 100

ANTHONY, NEW MEXICO 88021

PHONE (915) 877-3191

THE NEW

BOWDEN PACK TREE



Specially shaped **BRASS CAST FORKS**

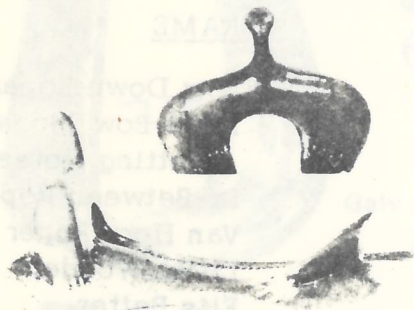
Specially Shaped **HUMANE BARS** to better fit your horse

The bars can be **RAWHIDE COVERED** for greater strength if desired

PROMPT DELIVERY!!

RITTER SADDLE TREE CO.

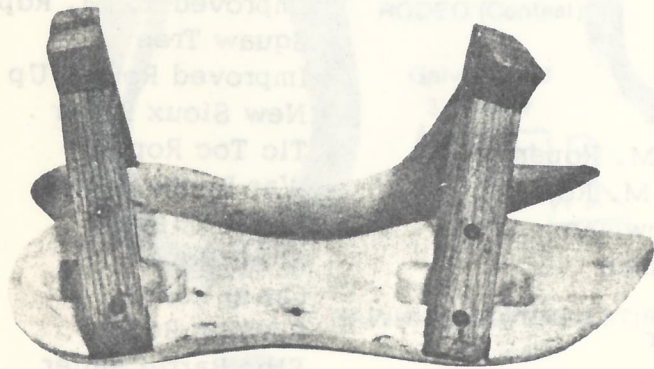
The following is a list of the more common names of saddles in use today that are available from RITTER SADDLE TREE CO. It is not a complete list because several styles may be known by other names. If you prefer what you or your customer's preference may be, please make it the year register specific name can be found in any way to meet your needs.



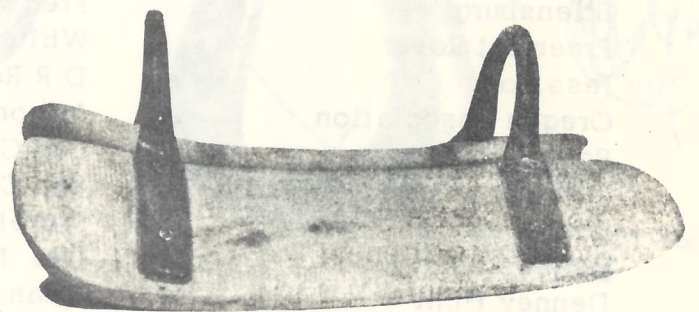
Buster Welch



Ritter Pack Tree



Humane Pack Tree



Decker Pack Tree

CURRENT SADDLE TREE STYLES

The following is a list of the more common names of saddle trees used today that are available from RITTER SADDLE TREE COMPANY. It is not a complete list because several styles may be known by other names. But no matter what you or your customer's preference may be, we will make it for you! Regular specifications can be varied anyway to meet your desires.

NAME

Old Mexico
 Bob Crosby
 Wilson Roper
 New South West Roper
 F - L Roper
 Quarter-Horse Roper
 New Bowman Roper
 Allen Roper
 S. F. Bowman Roper
 All' Around
 Arabian
 Arbuckle Roper
 Arizona Roper
 Ashcraft
 Bowman Cutter
 Carter Special
 Century 21
 Contest Association
 Curtis Roper
 Jim Dandy
 Dina Special
 Ellensburg
 Freemont Roper
 Jess Tong
 Oregon Association
 Form Fitter
 Low Bronc
 Bow Model B
 Professional Roper
 Denney Hunt
 M J Barrel Racer
 Klenda Roper
 Lieuallen
 Lima Cutting Horse
 Little Wonder Barrel Racer
 Low Association
 Low Ivory
 Low Tipton
 Meacham Roper
 Miniature

NAME

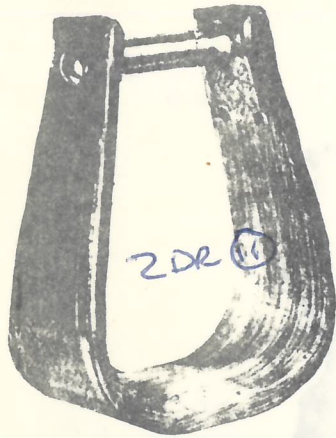
Old Frost Association
 Perry Ivory
 Pony Express
 Pro Trophy
 Rocky Mountain Roper
 Rodeo Association
 Round-Up Roper
 Santa Fe
 Jim Shoulders
 Sioux Roper
 Slick Fork Roper
 South West Roper
 Stockman Cutting Horse
 T. M. Roper
 Texas Roper
 37
 3/b Visalia
 Tipton
 Trick Tree
 Wade
 Weatherly
 Fred Wyble
 White River
 D R Roper
 Arizona T. M. Roper
 Leg Cut T. M. Roper
 Van Core Bowman
 Rowell Bowman
 Del Rio
 Dean Oliver
 War Bronc
 Rau Special
 Taylor Roper
 Tucson Roper
 Parker
 Sid Special
 Standard Association
 Tare Roper
 Rudy Roper
 Improved P. I. Roper

NAME

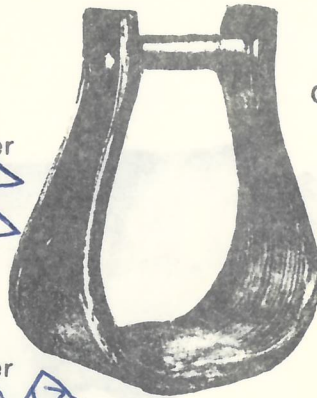
Low Down Roper
 Extra Low Moose
 Cutting Horse
 In-Between Roper
 Van Horn Roper
 Little Wonder
 Fits Better
 Fits Better Roper
 San Angelo Cutting
 Horse
 Crown Roper
 Black Hawk Roper
 Elbo Cutting Horse
 Sody Special
 New Arbuckle Roper
 Kernal Coon Kutter
 Leg Cut Low Down
 Roper
 Joe Gray
 California Roper
 Improved T. M. Roper
 Squaw Tree
 Improved Round-Up
 New Sioux Roper
 Tic Toc Roper
 War Bonnet Roper
 Butch Cassidy
 Steer Roper
 Craig Roper
 Bowden Roper
 Elbo Barrel Racer
 Story Low Moose
 McCellan
 Side Saddle
 Peruvian
 Arabian Costume Tree

RITTER SADDLE TREE CO.

Stirrups



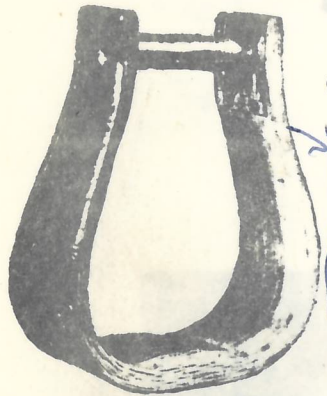
2DR 10
 2 1/2
 ROPE
 Galv. Bound Roller
 3" tread
 4" tread
 5" tread



BELL BOTTOM

Galv. Bound - 3" Roller
 1 1/2" tread
 2" tread
 2 1/2" tread
 3" tread
 4" tread
 5" tread
 6" tread

DEEP ROPE
 Galv. Bound 3" Roller
 3" tread
 4" tread



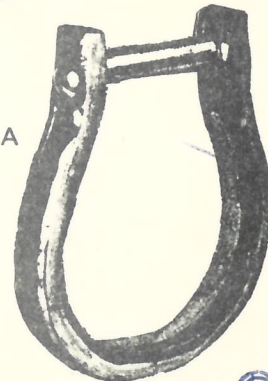
VISALIA

Galv. Bound 3" Roller
 1" tread
 1 1/2" tread
 2" tread
 2 1/2" tread
 3" tread
 4" tread



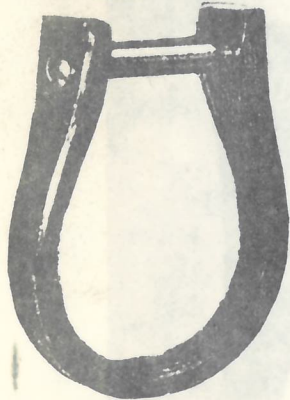
YOUTH VISALIA

Galv. Bound 2 1/2" Roller
 1 1/2" tread
 2" tread



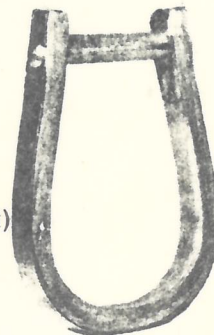
OSBOW

Galv. Bound 3" Roller
 1" tread
 1 1/2" tread

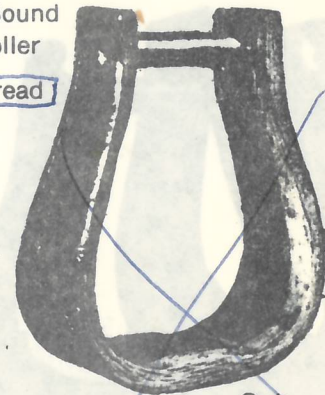


RODEO (Contest)

Galv. Bound 3" Roller
 3/4" tread



BRONC
 Galv. Bound 3" Roller
 3/4" tread

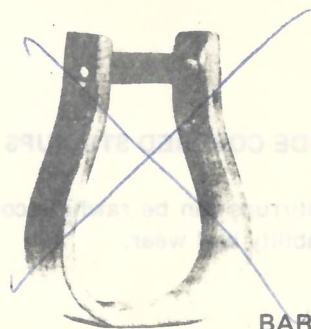


OVERSHOE

Galv. Bound - 3" Roller
 3" tread

RAWHIDE COVERED STIRRUPS

Any style of stirrups can be rawhide covered for extra durability and wear.



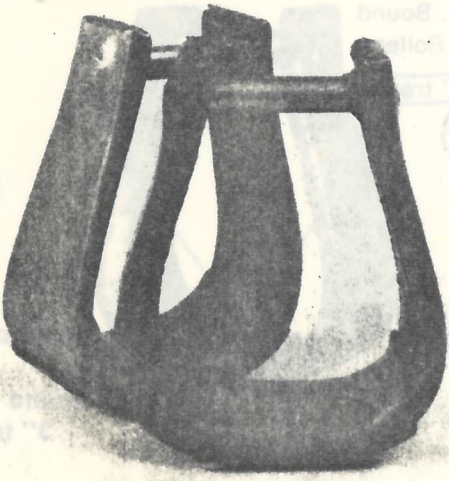
BARREL RACER

Galv. Bound - 2 1/2" Roller

RITTER SADDLE TREE CO.

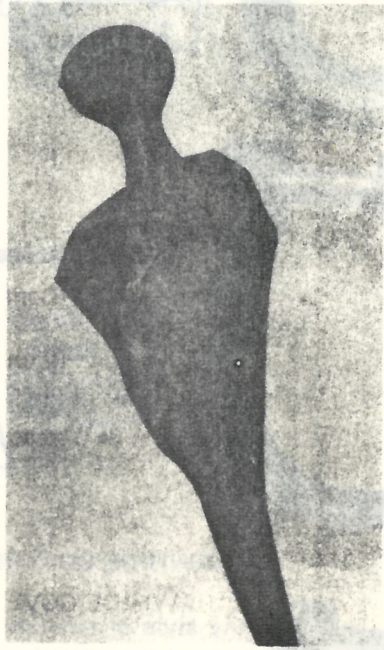


RAWHIDE SIDES



RAWHIDE COVERED STIRRUPS

Any style of stirrups can be rawhide covered for extra durability and wear.



RAWHIDE REPAIR HORN

Any style of horn can be rawhided to replace broken or worn out horns.

RITTER SADDLE TREE CO.

SADDLERY HARDWARE

Rigging Plates, Dees, and Rings



#203 STAINLESS STEEL DEES
3" or 3½"



#500 RIGGING RINGS
3" or 3½" Solid Brass
¾" width



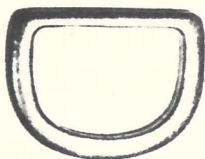
#600 RIGGING DEES
2½" or 3" Solid Brass
2½" or 3" Chrome Plated Brass



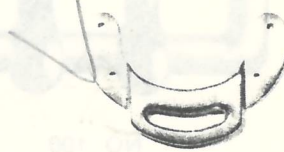
#1008 RIGGING PLATES
Solid Brass or
Chrome Plated Steel



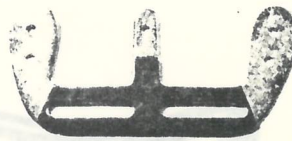
#1009 RIGGING PLATES
Solid Brass or
Chrome Plated Steel



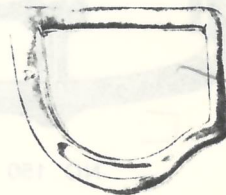
#3653 RIGGING DEES
2½" or 3" Solid Brass



#5053 RIGGING PLATES
Solid Brass



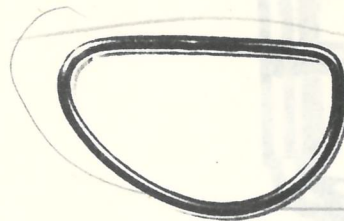
#5081
THREE-WAY RIGGING PLATES
Solid brass or
Chrome Plated Steel



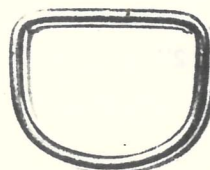
#22 E-Z RIGGING PLATES
(Rights and Lefts)
Solid Brass



#33 POWDER RIVER RIGGING
PLATES
Solid Brass or
Chrome Plated Steel



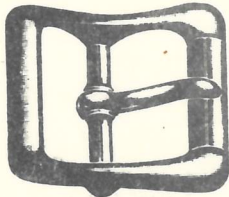
#43 BUCKING RIG DEES
Chrome Plated Steel



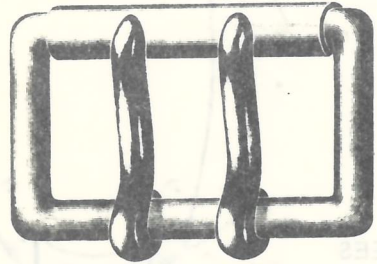
#000 RIGGING DEES
Brass Plated or
Chrome Plated Steel

RITTER SADDLE TREE CO.

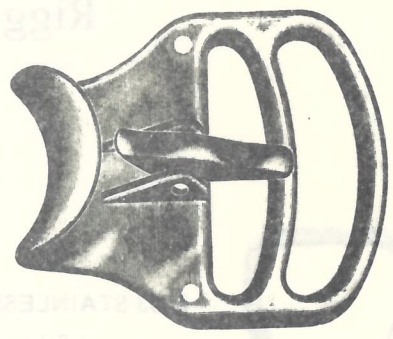
HARDWARE



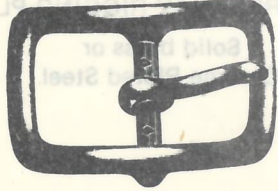
NO. 40
Nickle-Plated
1/2", 5/8", 3/4", 1"



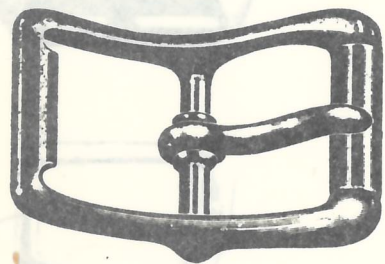
NO. 100
Nickle-Plated
3"



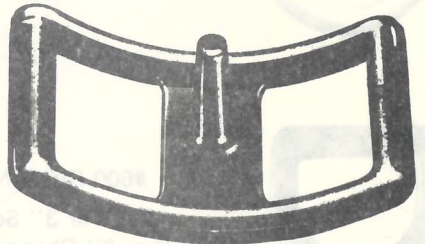
NO. 117
Tackaberry Cincha Buckle
Cadmium - 1 1/2"



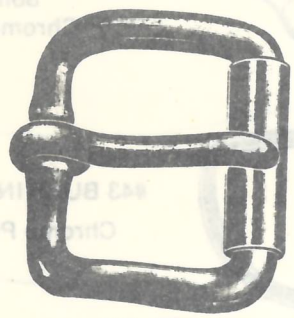
NO. 121
Nickle-Plated
1/2", 5/8", 3/4", 1", 1 1/4"



NO. 150
Nickle-Plated
3/4", 1", 1 1/8", 1 1/4",
1 1/2", 1 3/4"



NO. 210
Nickle-Plated
1/2", 5/8", 3/4", 1", 1 1/4"



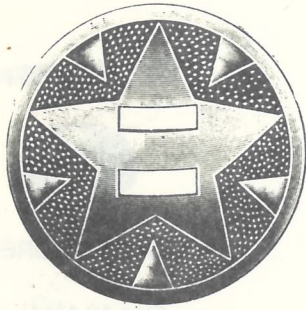
NO. 999
Nickle-Plated
1", 1 1/4", 1 1/2", 1 3/4", 2"
2" Brass Plated



NO. 340
Nickle-Plated
1/2", 5/8", 3/4"

RITTER SADDLE TREE CO.

HARDWARE



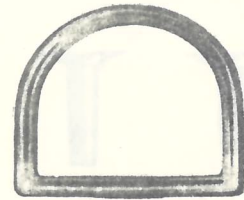
NO. 773 TIE ORNAMENTS

1", 1 1/4", 1 1/2", 1 3/4"
Nickle-Comp.



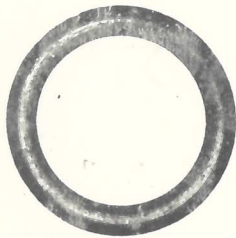
LEATHER CONCHOS

1 1/2", 2"



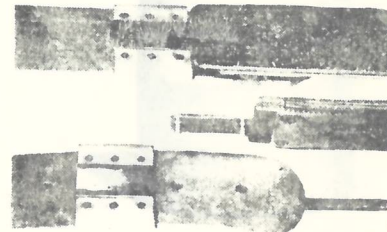
NO. 452 DEES

3/4", 7/8", 1", 1 1/4"
Nickle-Plated



RINGS
Nickle Plated

No. 3 - 1", 1 1/2", 1 3/4", 2"
No. 4 - 1 1/4"
No. 7 - 5/8", 3/4", 1"
No. 9 - 1/2", 1 1/4"



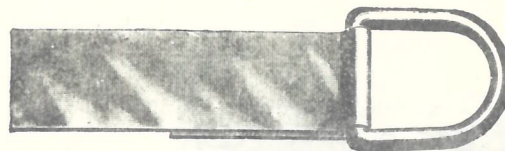
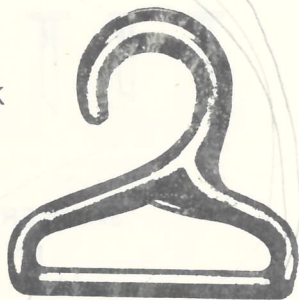
BLEVINS STIRRUP
LEATHER BUCKLES

2 1/2"
3"
3" - 4 post

PACK SADDLE HOOK

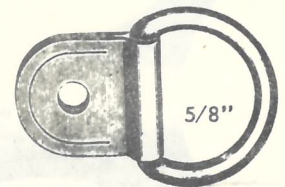
No. 469

3 Solid Brass



CLIP & DEES

Brass-plated or Nickel-plated



ROPING DEE

Nickle-plated

RITTER SADDLE TREE CO.

HARDWARE



NO. 9 COPPER RIVETS & BURRS

1/2", 5/8", 3/4", 1", 1 1/4", & Assorted.



OVAL HEAD SCREWS

Size 10 1/2"



COUNTER SINK WASHERS

for Size 10 Screws



NYLON HAND STITCHING THREAD

Waxed (For stitching cantle binders on.)



NO. 14 ESCUTCHEON PINS

Solid Brass 1". Per lb.



METAL SEAT STRAINERS

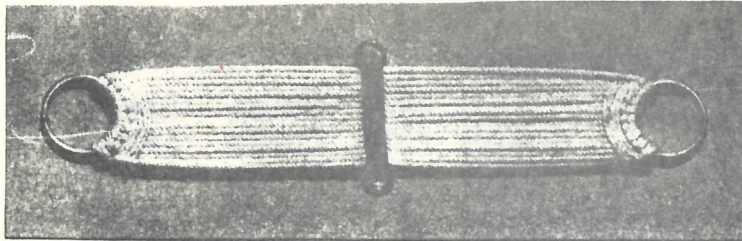
Regular and Quarter-Horse



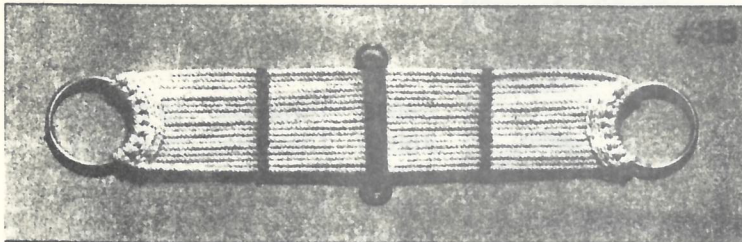
SADDLERY TACKS

per lb.
14 oz., 16 oz.
18 oz., 20 oz.
22 oz., 24 oz.

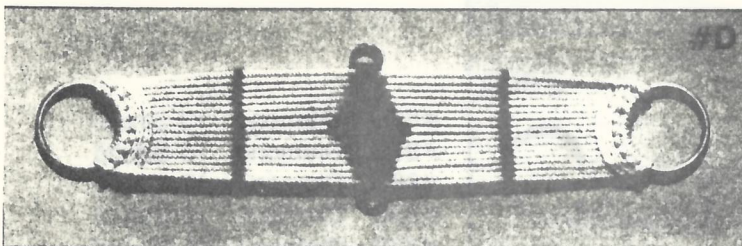
Mohair Cinchas



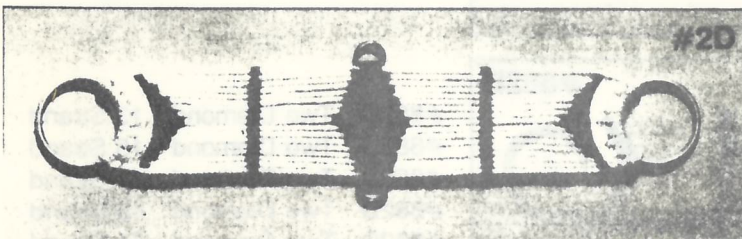
- #1B One Bar 13 Strand
- #1B One Bar 15 Strand
- #1B One Bar 17 Strand
- #1B One Bar 19 Strand
- #1B One Bar 21 Strand



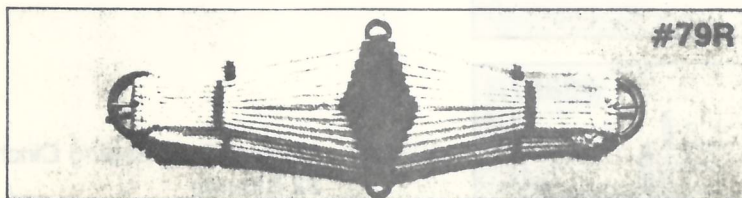
- #3B Three Bar 13 Strand
- #3B Three Bar 15 Strand
- #3B Three Bar 17 Strand
- #3B Three Bar 19 Strand
- #3B Three Bar 21 Strand



- #D Diamond 13 Strand
- #D Diamond 15 Strand
- #D Diamond 17 Strand
- #D Diamond 19 Strand
- #D Diamond 21 Strand

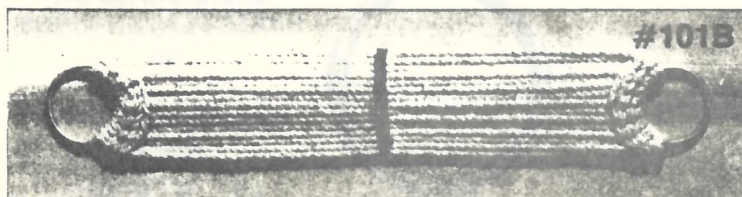


- #2D Two Diamond 13 Strand
- #2D Two Diamond 15 Strand
- #2D Two Diamond 17 Strand
- #2D Two Diamond 19 Strand
- #2D Two Diamond 21 Strand



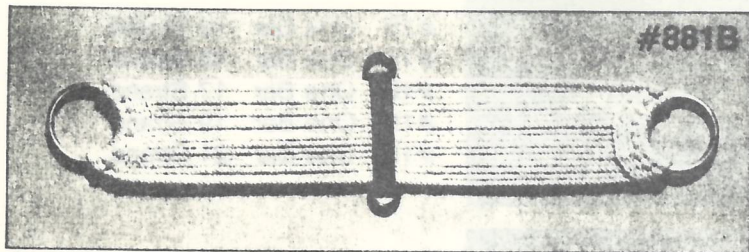
- #79R Heavy-Duty Roping Cincha
26 Strands only
Shown on #302 Solid Brass Buckles

Cotton Cinchas

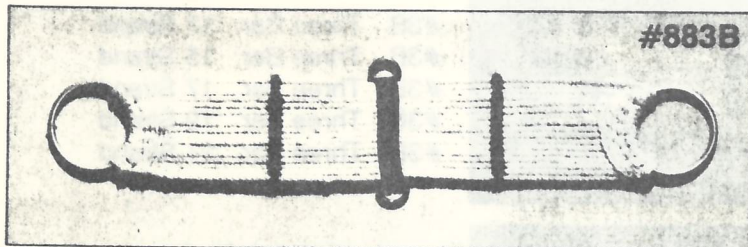


- #101B One Bar 13 Strand
- #101B One Bar 15 Strand
- #101B One Bar 17 Strand
- #101B One Bar 19 Strand

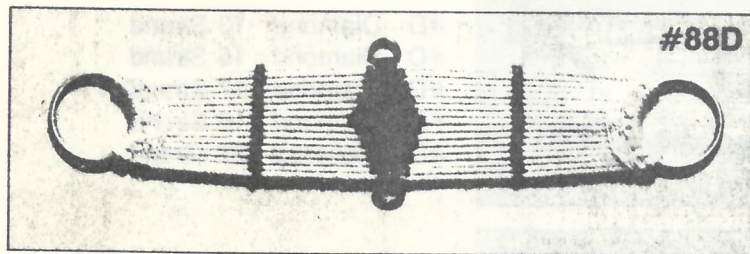
Rayon Cinchas



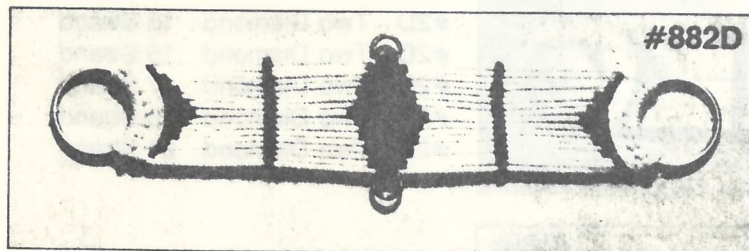
- #881B One Bar 13 Strand
- #881B One Bar 15 Strand
- #881B One Bar 17 Strand
- #881B One Bar 19 Strand
- #881B One Bar 21 Strand



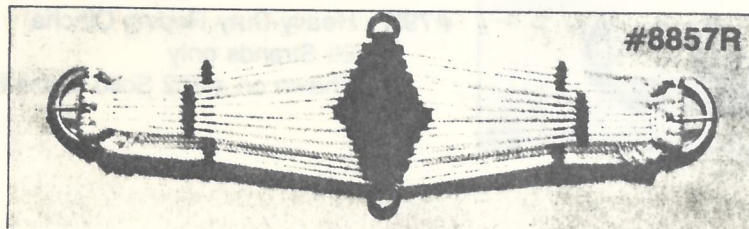
- #883B Three Bar 13 Strand
- #883B Three Bar 15 Strand
- #883B Three Bar 17 Strand
- #883B Three Bar 19 Strand
- #883B Three Bar 21 Strand



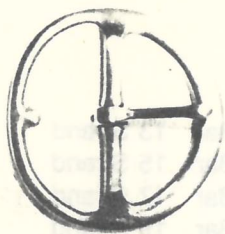
- #88D Diamond 13 Strand
- #88D Diamond 15 Strand
- #88D Diamond 17 Strand
- #88D Diamond 19 Strand
- #88D Diamond 21 Strand



- #882D Two Diamond 13 Strand
- #882D Two Diamond 15 Strand
- #882D Two Diamond 17 Strand
- #882D Two Diamond 19 Strand
- #882D Two Diamond 21 Strand



- #8857R Medium-Duty Roping Cincha
22 Strands
Shown on #302 Brass-Plated Buckles

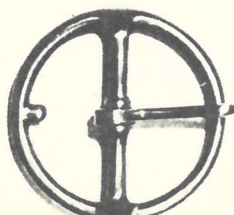


#302 BUCKLES
Solid Brass or
Brass-Plated

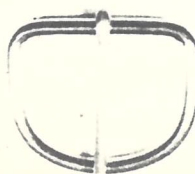


SOLID BRASS OR
BRASS-PLATED RINGS
3"

CADMIUM-PLATED
RINGS
2½", 3" or 3½"



#902 BUCKLES
Solid Brass,
Brass-Plated or
Cadmium Plated



#000 DEES
Brass or
Chrome-Plated

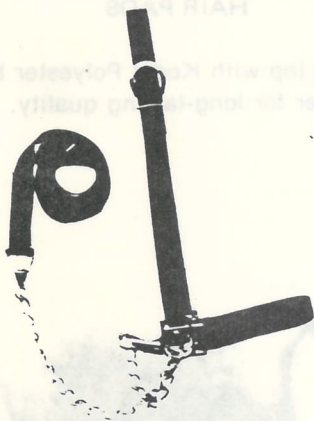
RITTER SADDLE TREE CO.

Web Halters

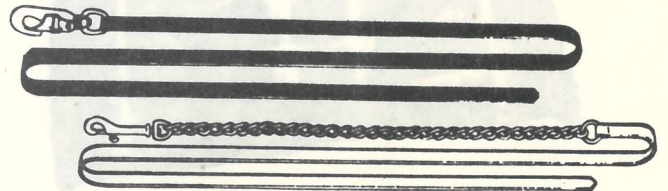
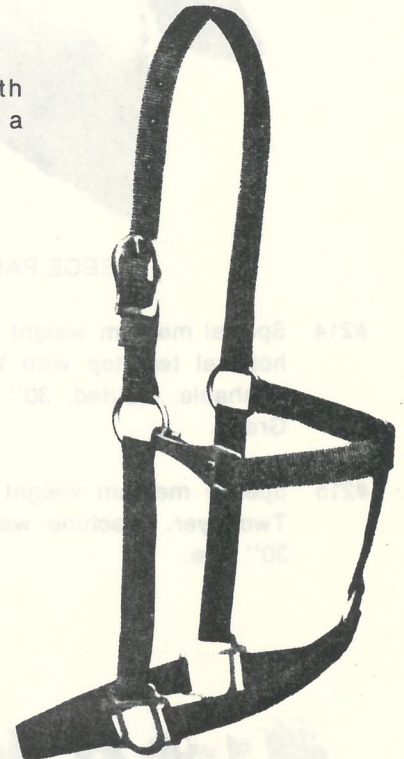
POLYPROPYLENE HALTERS

Made from triple-stitched 1" polypropylene with brass-plated hardware. Available with or without a heavy-duty snap on the side.

Large	15½-17 hands
Large w/snap	15½-17 hands
Average	14½-16 hands
Average w/snap	14½-16 hands
Yearling	13-15 hands
Yearling w/snap	13-15 hands
Weanling	11-12 hands
Weanling w/snap	11-12 hands

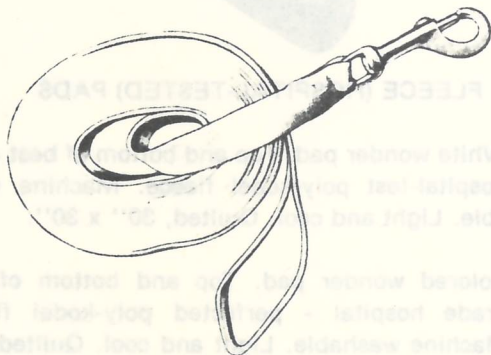


COW HALTER w/lead



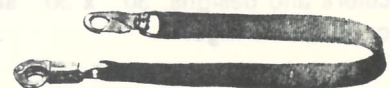
HALTER LEADS

These polypropylene leads are available in two different models, one with a swivel snap and the other with a swivel snap and lead chain. Lengths come in either 7' or 10'.



LUNGE LINE

Made from 1" polypropylene and available with a swivel snap or lead chain with swivel snap in lengths of either 24' or 30'.



TRAILER TIE

Double-stitched polypropylene with quick-release panic snap and spring snap.

RITTER SADDLE TREE CO.

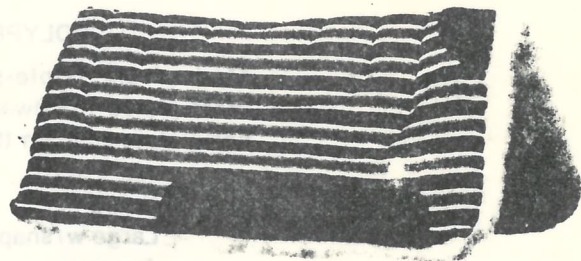
Saddle Pads



FLEECE PADS

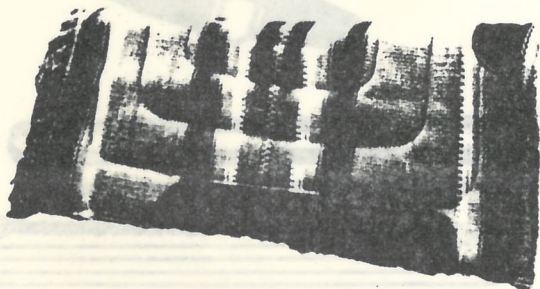
#214 Special medium weight poly-kodel pad. Colored hospital test top with White bottom. Machine washable. Quilted, 30'' x 30'' size. Red, Blue, Green.

#215 Special medium weight White poly-kodel pad. Two-layer. Machine washable. Quilted, 30'' x 30'' size.



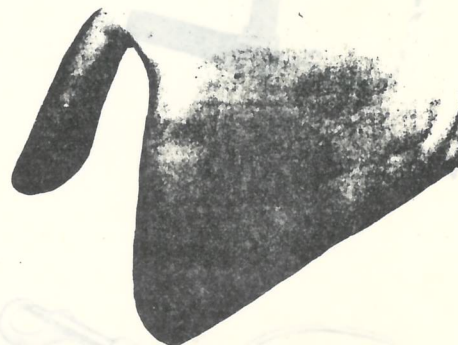
HAIR PADS

#177 Saddle rug top with Kodel Polyester bottom with wear leather for long-lasting quality.



FLEECE LINED MAYATEX PAD

#172 Mayatex fringed pad. Beautiful fringed Mayatex blanket top with heavy felt center. White Kodel fleece bottom to protect horse. Leather wear leathers. Square shape only. Bright assorted colors and designs. 30'' x 30'' size. With fringe or without fringe.



FLEECE (HOSPITAL-TESTED) PADS

#245 White wonder pad. Top and bottom of best grade hospital-test poly-kodel fleece. Machine washable. Light and cool. Quilted, 30'' x 30''.

#246 Colored wonder pad. Top and bottom of best grade hospital - perfected poly-kodel fleece. Machine washable. Light and cool. Quilted, 30'' x 30''. Red, Blue, Green.

#247 White wonder pad. Top and bottom and extra middle layer of hospital-tested poly-kodel fleece. Machine washable. Quilted, 30'' x 30'' size.

