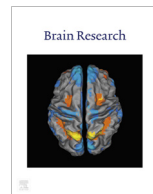




Contents lists available at ScienceDirect

Brain Research

journal homepage: www.elsevier.com/locate/bres

Research report

Locus coeruleus activation accelerates perceptual learning

Erin Glennon^{a,b,c,d}, Ioana Carcea^{a,b,c,d}, Ana Raquel O. Martins^{a,b,c,d,e}, Jasmin Multani^{a,b,c,d}, Ina Shehu^{a,b,c,d}, Mario A. Svirsky^{b,c}, Robert C. Froemke^{a,b,c,d,f,*}

^a Skirball Institute for Biomolecular Medicine, New York University School of Medicine, New York, NY 10016, USA

^b Neuroscience Institute, New York University School of Medicine, New York, NY 10016, USA

^c Department of Otolaryngology, New York University School of Medicine, New York, NY 10016, USA

^d Department of Neuroscience and Physiology, New York University School of Medicine, New York, NY 10016, USA

^e PhD Programme in Experimental Biology and Biomedicine, Center for Neurosciences and Cell Biology, University of Coimbra, Portugal

^f Howard Hughes Medical Institute Faculty Scholar, USA

ARTICLE INFO

Article history:

Received 12 March 2018

Received in revised form 18 May 2018

Accepted 30 May 2018

Available online xxx

Keywords:

Auditory cortex

Behavior

Locus coeruleus

Norepinephrine

Perceptual learning

Plasticity

ABSTRACT

Neural representations of the external world are constructed and updated in a manner that depends on behavioral context. For neocortical networks, this contextual information is relayed by a diverse range of neuromodulatory systems, which govern attention and signal the value of internal state variables such as arousal, motivation, and stress. Neuromodulators enable cortical circuits to differentially process specific stimuli and modify synaptic strengths in order to maintain short- or long-term memory traces of significant perceptual events and behavioral episodes. One of the most important subcortical neuromodulatory systems for attention and arousal is the noradrenergic locus coeruleus. Here we report that the noradrenergic system can enhance behavior in rats performing a self-initiated auditory recognition task, and optogenetic stimulation of noradrenergic locus coeruleus neurons accelerated the rate at which trained rats began correctly responding to a change in reward contingency. Animals successively progressed through distinct behavioral epochs, including periods of perseverance and exploration that occurred much more rapidly when animals received locus coeruleus stimulation. In parallel, we made recordings from primary auditory cortex and found that pairing tones with locus coeruleus stimulation led to a similar set of changes to cortical tuning profiles. Thus both behavioral and neural responses go through phases of adjustment for exploring and exploiting environmental reward contingencies. Furthermore, behavioral engagement does not necessarily recruit optimal locus coeruleus activity.

© 2018 Published by Elsevier B.V.

1. Introduction

The brain dynamically represents sensory information, allowing animals to adequately explore and exploit complex, changing, and potentially hazardous environments. Sensory input interacts with ongoing neural activity and various internal state variables to produce appropriate outputs at the levels of single neurons, networks, and behavior. Neural circuits and behavioral outputs are plastic, and can be modified by changes in the pattern of sensory inputs. Sensory stimuli that are novel, salient, potentially hazardous, or otherwise behaviorally relevant can trigger the central release of endogenous neuromodulators that alter excitability and synaptic transmission in target neuronal networks. While these ‘modulatory’ effects can sometimes be relatively subtle, in many cases the effects of neuromodulation on cognition and neural function

are substantial and profound, such as enabling or gating the induction of long-term synaptic plasticity (Bear and Singer, 1986; Froemke, 2015), triggering brain state transitions (Carter et al., 2012; Constantinople and Bruno, 2011; Steriade, 1997), or controlling selective attention to ensure that some incoming stimuli are detected and recognized while others are ignored (Disney et al., 2007; Hasselmo and Sarter, 2011; Roberts and Thiele, 2008).

The locus coeruleus was first discovered in the human brain by J.C. Reil in 1809 as a streak of dark blue substance in the brainstem, near the lateral wall of the fourth ventricle (Reil, 1809). This structure was later named by Wenzel and Wenzel (1812), after the Latin words describing the appearance (a ‘blue place’), and stereotaxically identified by Russel and subsequent anatomists (Amaral and Sinnamon, 1977; German et al., 1988; Russell, 1955). In the rat brain, locus coeruleus is a small structure, around 300 μm wide and up to 600 μm along the dorsal-ventral axis. Rat locus coeruleus contains around 1500–2000 cells, 200 of which are in a more ventral location called the subcoeruleus area (Swanson, 1976). Human locus coeruleus contains roughly 10–20 times as many

* Corresponding author at: NYU School of Medicine, 540 First Avenue, New York, NY 10016, USA.

E-mail address: robert.froemke@med.nyu.edu (R.C. Froemke).

neurons (German et al., 1988). Neurons in locus coeruleus are electronically coupled (Christie et al., 1989; Christie and Jelinek, 1993; Ishimatsu and Williams, 1996) and can be divided into subpopulations according to their morphology, into fusiform, large multipolar and small round cells.

One of the most striking features of the locus coeruleus is the widespread efferent network, constituting the sole source of central nervous system noradrenaline, with axonal projections being found in all regions and layers of cortex (Levitt and Moore, 1978). This is related to the involvement of locus coeruleus in many important neural and physiological functions including respiration, cardiac function, micturition, motivation, attention, arousal, regulation of sleep-awake cycles, stress, and learning and memory (Amaral and Sinnamon, 1977; Aston-Jones and Bloom, 1981; Aston-Jones et al., 1997; Aston-Jones and Cohen, 2005; Berridge et al., 1993; Berridge and Waterhouse, 2003; Bouret and Sara, 2004; Bouret and Sara, 2005; Carter et al., 2010; Constantinople and Bruno, 2011; Devauges and Sara, 1990; Foote et al., 1975; Froemke and Schreiner, 2015; Gu, 2002; Martins and Froemke, 2015; Roussel et al., 1967; Sara and Devauges, 1988; Vazey and Aston-Jones, 2014; Yu and Dayan, 2005). Notably, locus coeruleus activity can improve perception across numerous sensory percepts (Escanilla et al., 2010; Manella et al., 2017; Martins and Froemke, 2015; Navarra et al., 2017). Recordings from locus coeruleus have shown that these neurons have both tonic and phasic firing patterns, believed to have differential effects on behavior performance, arousal, and attention (Aston-Jones and Cohen, 2005; Berridge and Waterhouse, 2003). Tonic firing is important for maintaining long-term changes in sensory networks, associated with different states of arousal (Aston-Jones and Bloom, 1981; Constantinople and Bruno, 2011; Martins and Froemke, 2015). In contrast, phasic firing is thought to modulate target areas more acutely, changing signal-to-noise ratios and modifying sensory representations such as receptive fields to accommodate newly salient and/or surprising, sensory information (Castro-Alamancos, 2002; Devilbiss and Waterhouse, 2000; Hirata et al., 2006; Martins and Froemke, 2015; Nieuwenhuis et al., 2005). Direct recordings from locus coeruleus in monkeys performing an attention task showed that changes in firing related with overall behavioral performance and could precede behavioral shifts (Aston-Jones et al., 1994).

Previous studies in the auditory cortex found that noradrenergic modulation could affect tuning curves and improve auditory perception in some cases. Manunta and Edeline (2004) found that iontophoretic application of norepinephrine paired with pure tones could persistently change tonal tuning profiles largely through activation of noradrenergic α -receptors. Many of these changes were suppressive, but Edeline et al. (2011) showed that pairing tones with endogenous noradrenergic release via locus coeruleus stimulation ('locus coeruleus pairing') could be more effective at enhancing responses relative to iontophoretic pairing. Locus coeruleus pairing could affect thalamic responses as well, but changes endured much longer in the cortex than in the auditory thalamus (Edeline et al., 2011). Similarly, we found that pairing tones with either electrical or optogenetic locus coeruleus stimulation could modify tuning curves in adult rat auditory cortex (Martins and Froemke, 2015). These changes in auditory responses could improve auditory perception and enhance learning rates when a rewarded tone and an unrewarded tone switched behavioral meaning (i.e., the reward schedule for different stimuli was suddenly reversed from one behavioral testing session to the next). However, in those previous behavioral experiments, auditory stimuli were presented in an uncued manner during training and testing, requiring that animals maintain a high level of alertness throughout the entire behavioral session or performance would lapse. Thus locus coeruleus pairing might have just enhanced over-

all arousal and behavioral engagement, rather than have specifically promoted behaviorally-relevant plasticity. Here we now examine this issue more directly by examining the consequences of locus coeruleus pairing on a self-initiated auditory recognition task, in which the level of task engagement should be more standardized across trials.

2. Results

Here we examined how animals behaviorally respond to a switch in reward on an auditory task, before asking how locus coeruleus stimulation affects behavior or task-relevant neural activity.

2.1. Rats have stereotyped behavioral responses to changes in reward

To examine how animals responded to a change in reward contingency, we trained 20 rats on an auditory recognition go/no-go task. Animals were operantly conditioned to self-initiate trials, nose-poking for a food reward to target tones of a given frequency (initially 4 kHz) and withholding responses to non-target foil tones (Fig. 1A). Stimuli were 0.5–32 kHz pure tones at one octave intervals, presented at 70 dB sound pressure level (SPL) and 100 msec in duration. Animals were trained and tested 1–2 h/day daily or near-daily for about two months. After 2–3 weeks of training, animals had high hit rates (80–90%) and low false alarm rates, resulting in d' values of >1.5 . We have previously used this task to assess how self-initiation modulates auditory cortex during behavioral engagement and found that auditory cortical responses are required for task performance (Carcea et al., 2017). Furthermore, we have examined how cortical neuromodulation and plasticity can affect performance on an uncued version of this task in rats (Froemke et al., 2013) and mice (Kuchibhotla et al., 2017), including via activation of locus coeruleus (Martins and Froemke, 2015).

Once animals reached criteria for reliable performance, the rewarded tone was switched from 4 kHz to a different previously-unrewarded frequency. Behavioral performance was monitored for weeks thereafter to document when and how rats began to recognize the switch or 'reversal' in rewarded sound. One example animal is shown in Fig. 1B, where day 1 is the first day that 1 kHz became the new rewarded target tone and 4 kHz became an unrewarded non-target tone. This animal perseverated at the original target tone for weeks, reliably nose-poking to the unrewarded 4 kHz tone until day 30. Additionally, this animal began exploring the behavioral consequences to other tones, nose-poking at a high rate to nearly all stimuli starting on day 6 and continuing through day 11, at which point this behavioral generalization persisted only for lower-frequency tones between 0.5 and 4 kHz until day 23.

These three features of auditory learning were consistent across animals: 1) rats initially perseverated on the original target (Fig. 2A), 2) after a few days rats began exploring responses to other tones (Fig. 2B), and 3) performance (as measured by d') returned to originally high levels after several weeks (Fig. 2C). The duration of each of these behavioral epochs could be variable across animals, but for a given animal, the onset or offset of behavioral responses to a tone could be abrupt in terms of daily performance. Averaged across animals though, d' values dropped to approximately zero on the first day that the target was switched, and appeared to gradually return to originally-high levels over a period of weeks. These features of reversal learning are similar to previous studies that have documented perseveration and exploration behaviors (Butter, 1969; Chudasama and Robbins, 2003; Judge et al., 2011).

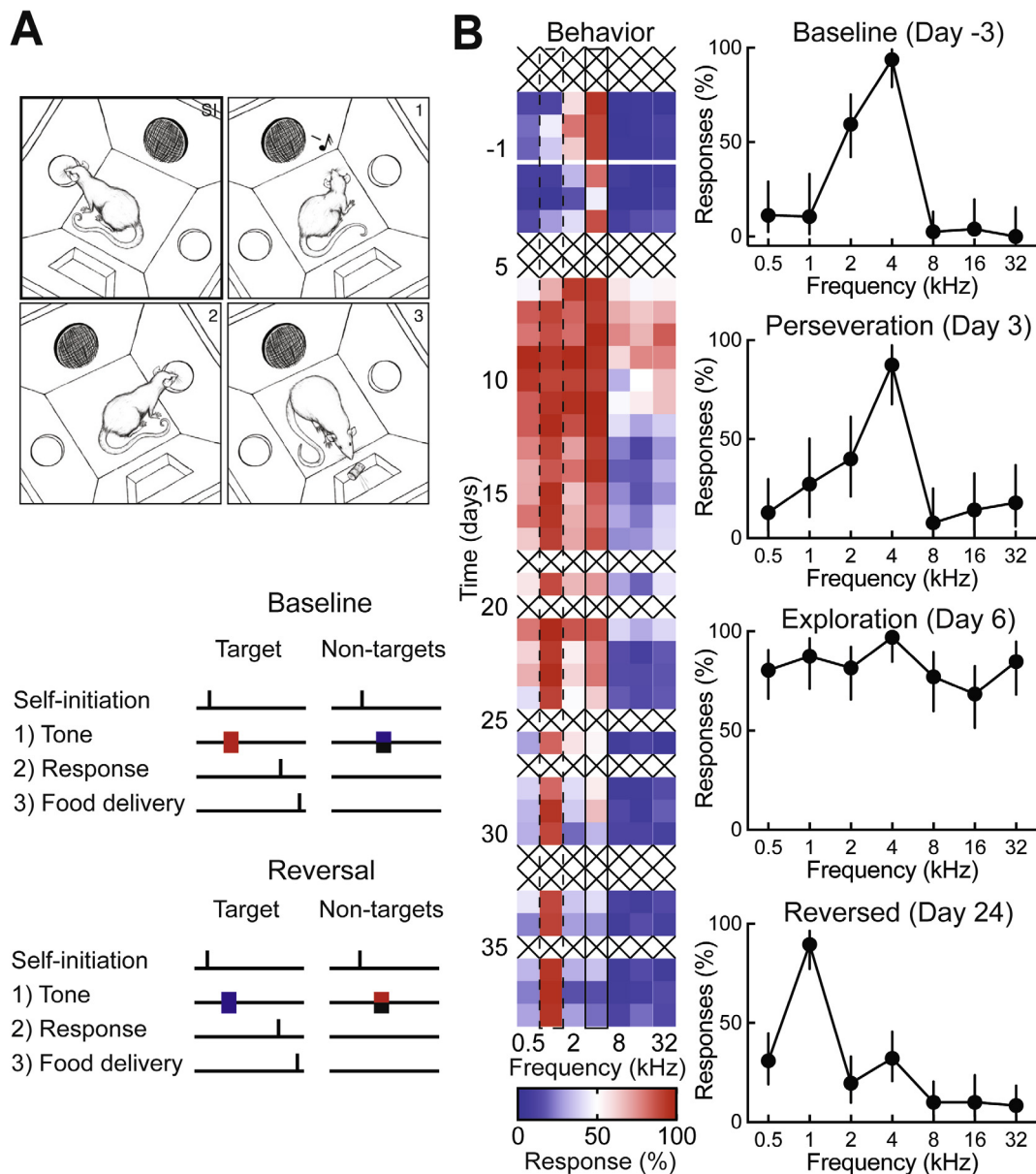


Fig. 1. Self-initiated auditory target recognition and 'reversal'. A, Top, schematic of the operant conditioning chamber with two nose ports (one for self-initiation and one for target response), one speaker and one food dispenser. SI: Animal self-initiates by nosepoking in the initiation nose port. 1: A tone is played. 2: If the tone is a target tone, the animal should nosepoke in the detection port, separate from the from the initiation port. 3: The animal receives a food pellet reward for correct responses on 'go' trials. Bottom, schematic of the go/no-go auditory behavioral task. Target (red) and non-target (blue/black) tones were 100 ms in duration, distributed one octave apart between 0.5 and 32 kHz, and delivered in a random order at 70 dB SPL. When the task was 'reversed', one of the previously unrewarded tones (blue) became the rewarded tone, and the previously rewarded tone (red) became an unrewarded tone. B, An example rat trained on go/no-go task then reversed. The original target tone was 4 kHz and the reversed target tone was 1 kHz. Left, heat map shows the animal's performance throughout training, with daily responses (%) to each tone. Right, selected response curves from individual days during different phases of reversal learning. Error bars are 95% confidence intervals.

In some animals, the new target differed from the original target by one octave (switched up in frequency from 4 kHz to 8 kHz or down in frequency to 2 kHz); Fig. 2 green symbols), in other animals, the new target was two octaves from the original (switched either up in frequency to 16 kHz or down in frequency to 1 kHz; Fig. 2 red symbols). Two-octave switches seemed to be more challenging for animals to re-learn compared to the one-octave switch (Fig. 2C), regardless of whether the target was higher (16 kHz) or lower (1 kHz). This was not due to the amount of perseverance at the original target, which was similar between one-octave and two-octave groups (Fig. 2A), but instead was a consequence of longer exploratory phases for the two-octave animals (Fig. 2B).

2.2. Locus coeruleus pairing accelerates auditory learning

Previous studies in rodents and primates indicate that locus coeruleus is activated during behavioral conditioning and particularly sensitive to switches of reward (Aston-Jones et al., 1997; Bouret and Sara, 2004). To examine whether locus coeruleus activity could promote auditory learning, we optogenetically paired locus coeruleus stimulation with the new rewarded target tone after reversal, using a combination of transgenic and viral approaches for expressing channelrhodopsin-2 in locus coeruleus noradrenergic/tyrosine hydroxylase (TH) cells. One animal was transgenic, with Cre recombinase expressed in TH+ cells, injected

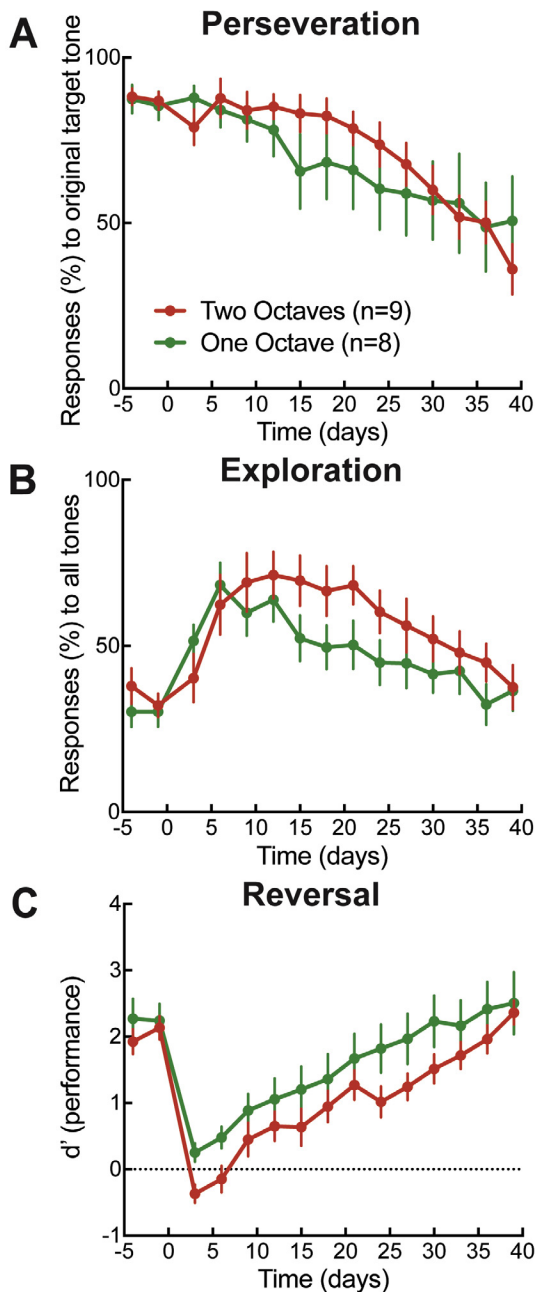


Fig. 2. Reversal learning phases across one or two octaves. A, 'Perseveration' was quantified as responses (%) to the original target tone during the baseline training (days -5 to 0) and after the rewarded tone had been changed (over second week days 8–15). Animals had similar rates of perseveration whether the new target tone differed from the original target tone by two octaves (red symbols, $84.4 \pm 2.8\%$ false alarm responses to 4 kHz over week two after reversal, $N = 9$) or one octave (green symbols, $75.3 \pm 4.9\%$ responses to 4 kHz, $N = 8$, $p > 0.2$ compared to two-octave perseveration rate, Student's unpaired two-tailed *t*-test with Bonferroni correction for multiple comparisons). B, 'Exploratory' responses (%) to all tones. Animals that reversed to a tone two-octaves separated from the original target-tone had higher rates of exploration than those reversed to a tone one-octave separated (two-octave exploration on second week after reversal: $70.7 \pm 4.3\%$, one-octave: $57.9 \pm 3.8\%$, $p < 0.05$, Student's unpaired two-tailed *t*-test with Bonferroni correction for multiple comparisons). C, Performance (d') on the auditory go/no-go task across baseline and reversal. Animals reversed to a tone that differed by one-octave had higher d' values than those that were reversed to a tone differing by two-octaves (two-octave d' on second week after reversal: 0.6 ± 0.1 , one-octave d' : 1.0 ± 0.2 , $p < 0.05$, Student's unpaired two-tailed *t*-test with Bonferroni correction for multiple comparisons).

with pAAV5-EF1 α -DIO-ChETA-EYFP (Witten et al., 2011). A second animal was a wild-type with CAV2-PR5-ChR2-mCherry (Hickey et al., 2014; Li et al., 2016) injected into locus coeruleus, utilizing the PR5 promoter (Hwang et al., 2001) to selectively express in the locus coeruleus noradrenergic neurons. A third animal was a wild-type with pAAV5-CaMKII-ChETA-EYFP injected into locus coeruleus. We verified channelrhodopsin expression in TH+ cells in locus coeruleus with immunohistochemistry of tissue sections from animals after the end of the experiments (Fig. 3A). After initial training with a 4 kHz target, followed by surgery, animals were then re-trained to criterion on the original 4 kHz target before switching the target to 16 kHz on day 1 of testing. Starting on day 1 and every day thereafter, the new target tone was paired at 3 Hz with optogenetic locus coeruleus stimulation at 10 Hz for 5–10 min (Fig. 3B). These pairing sessions occurred outside of the context of the behavior, prior to the daily training sessions.

An example animal receiving locus coeruleus pairing is shown in Fig. 3C. This animal rapidly learned the switch in rewarded tone, with behavioral performance returning to original levels within two weeks. This is in contrast to the slower learning rates in control uninjected wild-type animals (Fig. 1,2), including only the animals reversed to the same target tone as the locus coeruleus stimulated animals (Fig. 3D). This cohort of control animals includes two TH-Cre Long-Evans rat expressing only YFP in the locus coeruleus receiving sham optical stimulation, whose reversal learning was comparable to control animals.

In general, locus coeruleus pairing decreased the duration of perseveration and decreased the length of the exploratory phase, collectively leading to faster recovery of d' after the target tone was switched (Fig. 4). In the first six days, control animals and locus coeruleus paired animals had similar levels of perseveration, but starting at day 7, locus coeruleus paired animals had significantly decreased perseveration (Fig. 4A). This difference persisted throughout reversal learning, peaking at day 23. Both control animals and locus coeruleus paired animals explored early, but locus coeruleus paired animals refined their exploration more quickly. As with perseveration, there was no difference in rates of exploration through day 6, but starting on days 7, locus coeruleus stimulated animals already had significantly reduced exploration compared to control animals, indicating that they were refining responses to the new target tone. Maximal differences in exploration rates occurred after three weeks of reversal training. This gap in exploration rates continued through nearly the end of reversal learning, when rates began to converge on days 36–40. The combination of decreased perseveration and a shortened exploratory phase led to faster rates of reversal learning. By day 7 of reversal learning, locus coeruleus paired animals were performing significantly better than controls on the auditory perceptual task as measured by d' . By day 8, locus coeruleus paired had returned to baseline performance levels while control animals did not consistently perform at baseline levels until day 32. When comparing the correlation of exploration and perseveration during the first and second weeks of reversal learning, there was no difference between locus coeruleus paired animals and control animals in the first week (Fig. 5A). During the second week, locus coeruleus animals had markedly lower rates of both exploration and perseveration than control animals (Fig. 5B). The observation that both rates decreased in a similar time frame suggests that these two aspects of reversal learning may co-vary. Notably, sham optically stimulated animals performed very similarly to control animals in both weeks one and two (Fig. 5). Furthermore, when compared to animals reversed on the one-octave variant of the task (Fig. 2,4), locus coeruleus paired two-octave animals had

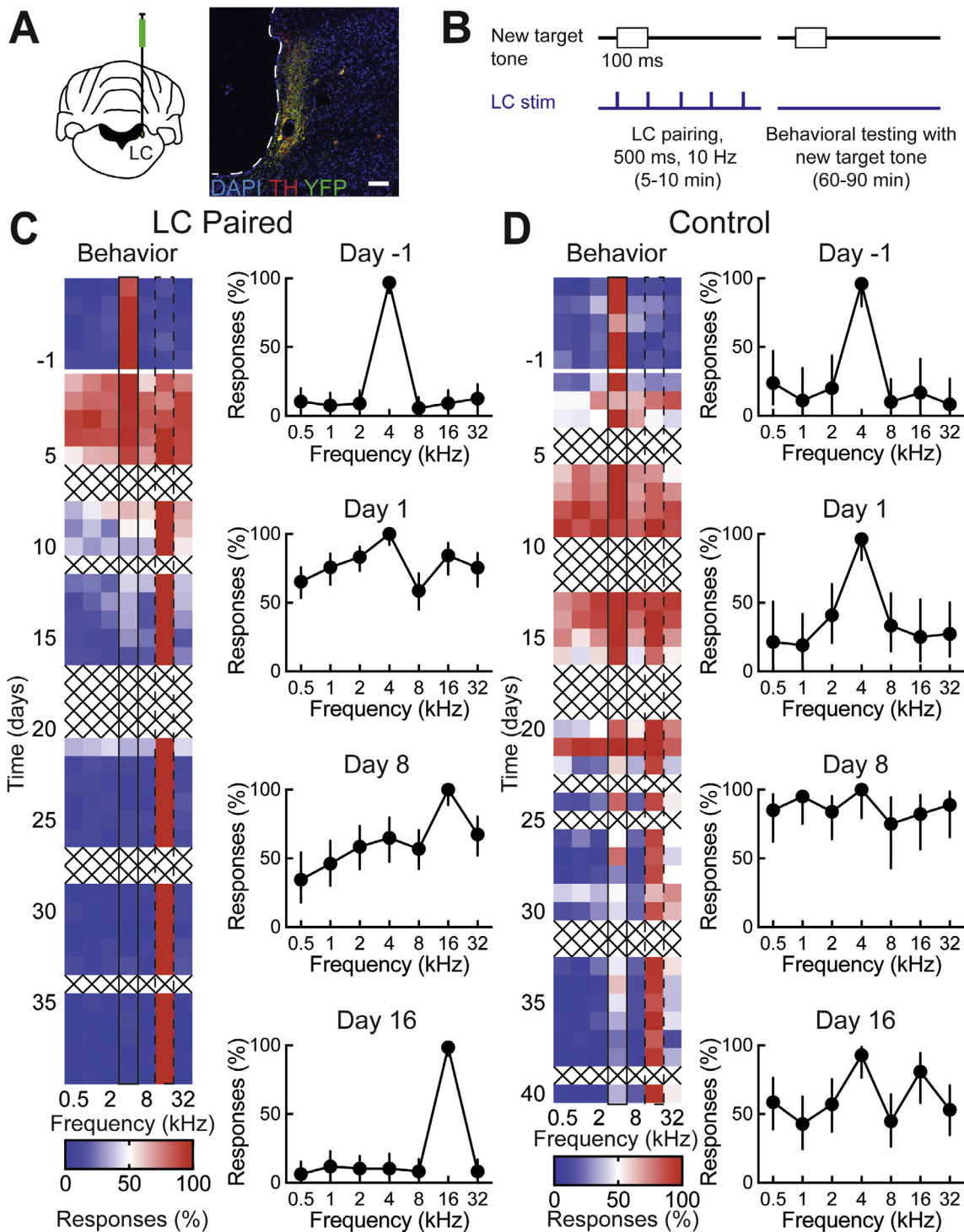


Fig. 3. Locus coeruleus activity promotes auditory learning. **A**, Optogenetic control of locus coeruleus. Left, schematic of viral injection. Animals had a virus expressing channelrhodopsin-2 stereotaxically injected into left locus coeruleus. Right, TH and YFP immunostaining in locus coeruleus imaged at 20X; red, TH; green, YFP; blue, DAPI. Scale bar: 100 μ m. **B**, Schematic of pairing optogenetic locus coeruleus stimulation with new target tone. Starting on day 1 of reversal, optogenetic stimulation of locus coeruleus was paired with the new target tone for 5–10 min prior to behavioral testing of the reversal task. **C**, An animal that underwent locus coeruleus pairing during reversal learning. The original target tone was 4 kHz and the new target tone was 16 kHz. Left, heat map shows performance throughout training, with daily responses (%) to each tone. Right, selected response curves from individual days during different phases of reversal learning. Error bars are 95% confidence intervals. **D**, An example control animal that was trained on the same reversal task as the locus coeruleus paired animal in **C**.

similar exploratory phases ($p > 0.5$, performance on week two, Student's unpaired two-tailed t -test with Bonferroni correction), but less perseveration ($p < 0.002$), leading to overall faster reversal learning ($p < 0.005$).

2.3. Locus coeruleus pairing has complex effects on cortical tuning curves

Previously we examined the effects of locus coeruleus pairing on cortical tuning curves with electrophysiological recordings

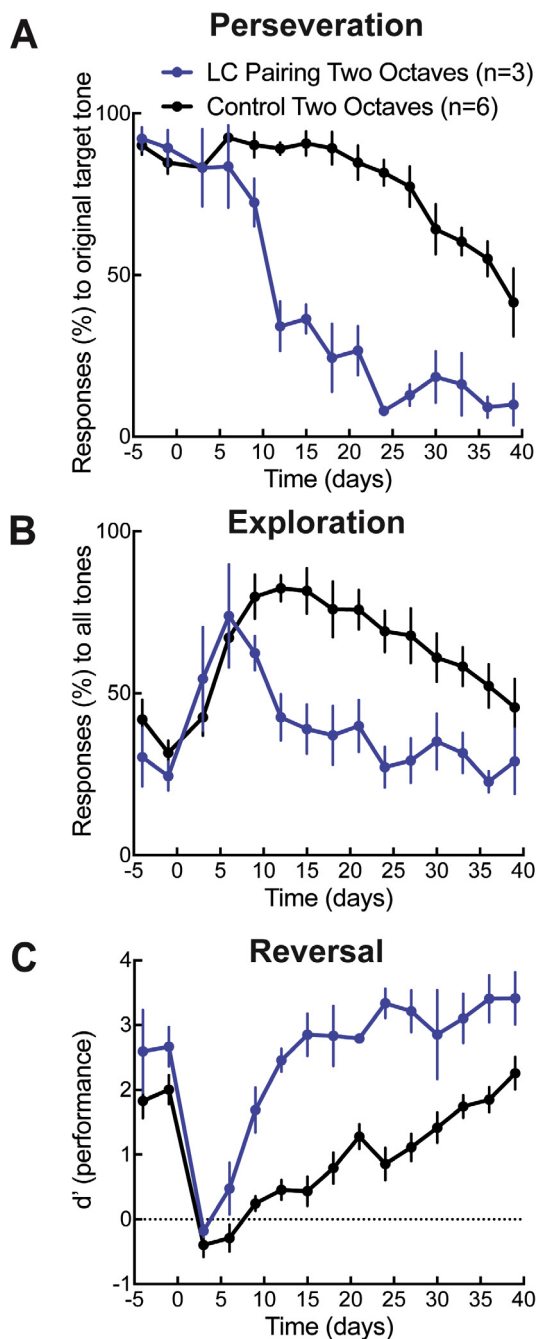


Fig. 4. Locus coeruleus activity alters phases of reversal learning. A, Perseveration, quantified as responses (%) to the original target tone during the baseline training (days –5 to 0) and once the rewarded tone has been changed (over second week days 8–15). Control animal perseveration was quite high (black symbols, $90.3 \pm 1.8\%$, $N = 6$), but perseveration in locus coeruleus paired animals was significantly reduced (blue symbols, $47.1 \pm 7.1\%$, $N = 3$, $p < 0.0001$). B, Exploration, quantified as responses to all tones (%), was shorter in locus coeruleus paired animals vs control animals (control animals, black symbols, $81.6 \pm 3.3\%$; paired animals, blue symbols, $49.0 \pm 4.5\%$; $p < 0.0001$). C, Auditory task performance (d') recovered more quickly in paired animals than control animals (control animals, black symbols, second week post-reversal d' : 0.4 ± 0.1 ; paired animals, blue symbols, d' : 2.2 ± 0.2 ; $p < 0.0001$). Paired animals returned to baseline performance on day 8 (d' : 1.6 ± 0.2), while control animals did not consistently return to baseline levels until day 32 (d' : 1.6 ± 0.3).

in vivo (Martins and Froemke, 2015). Here we made new recordings in wild-type and TH-Cre rats expressing channelrhodopsin-2 in locus coeruleus neurons, and pairing a specific pure tone with

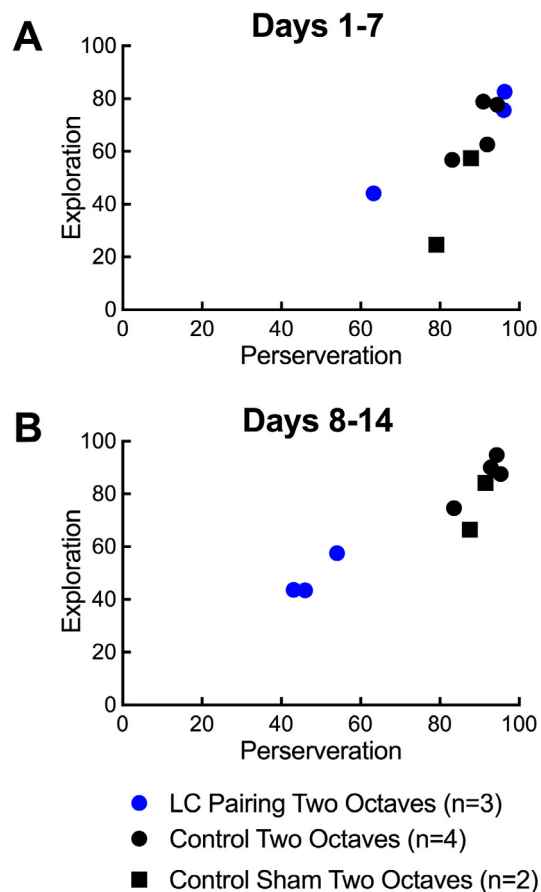


Fig. 5. Correlation of perseveration and exploration phases of reversal learning. A, The correlation between perseveration, quantified as responses (%) to the original target tone (4 kHz) and exploration, quantified as responses to all tones (%) for control animals (black circles), sham paired animals (black squares), and paired animals (blue circles) during the first week of reversal B, Same as A, but during the second week of reversal.

optogenetic locus coeruleus stimulation (Fig. 6A). Optically-evoked responses were confirmed in a wild-type Long-Evans animal expressing ChETA in locus coeruleus under the CaMKII promoter. Locus coeruleus localization was first confirmed through multi-unit recordings of responses to noxious stimuli and optogenetic stimulation (Fig. 6B). We asked two questions: first, if the effects of pairing could improve representations in the auditory cortex and make those representations more discriminable to aid decoding; second, we asked if additional pairing episodes could further consolidate or sharpen tuning curves.

We made multiunit recordings from primary auditory cortex of anesthetized wild type Long-Evans and TH-Cre rats, performing nine pairing episodes in a total of three different animals. Two recordings showing the effects of single episodes of pairing immediately post-pairing are shown in Fig. 6C. One of these recordings was made in the low frequency region of primary auditory cortex, and initially the best frequency was 2 kHz (Fig. 6C, top). The tone to be paired with locus coeruleus stimulation was 16 kHz, which did not initially evoke a response in this recording (Fig. 6C, upper left). The neural d' for 16 kHz as effective 'target' was -1.9 , meaning that the lack of response relative to the responses to other 'foil' tones would make 16 kHz tones difficult to detect and recognize. After pairing, the tuning profile broadened, increasing the relative response to the paired 16 kHz tone and normalizing responses to other unpaired tones (Fig. 6C, upper right). This broadening of

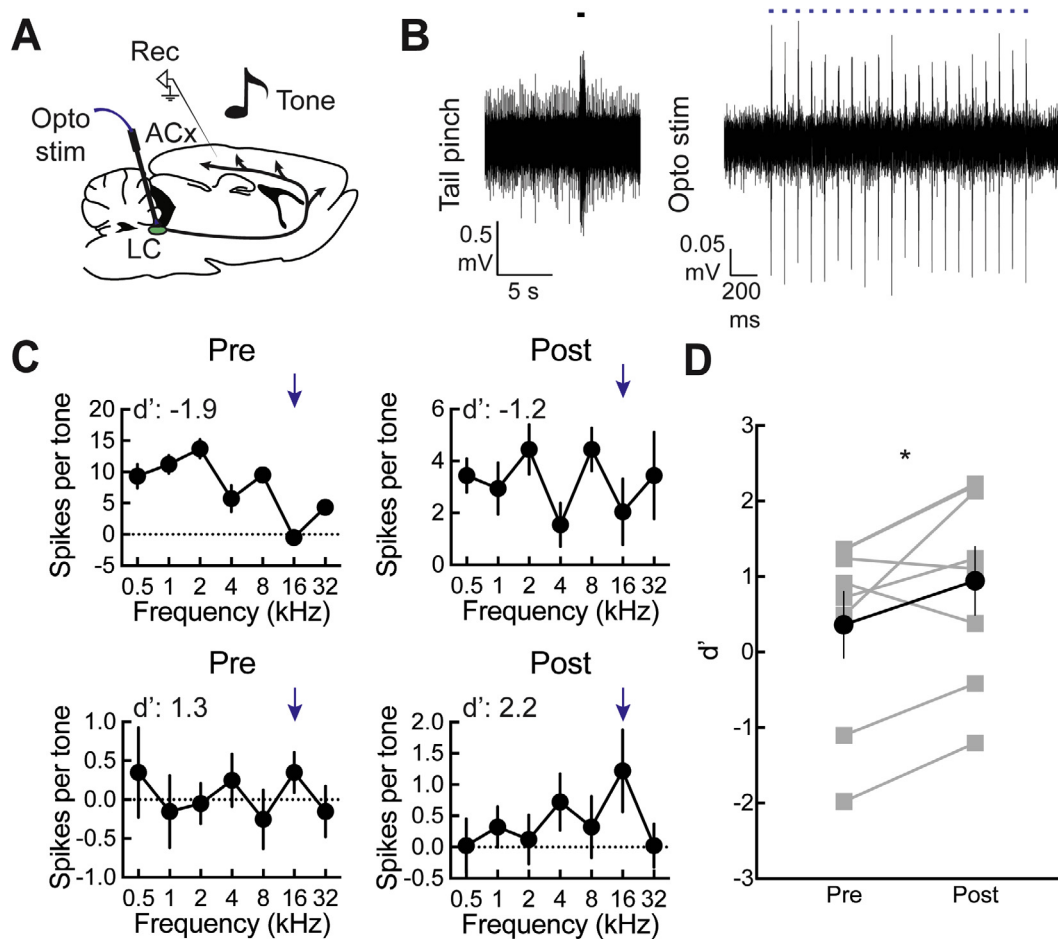


Fig. 6. Locus coeruleus pairing improves tonal discrimination in anesthetized rat primary auditory cortex. A, Schematic of pairing optogenetic stimulation of locus coeruleus with tones and recording multiunit activity from auditory cortex. B, Physiological confirmation of targeting locus coeruleus. Left, tail-pinch responses in locus coeruleus. Right, optogenetically-evoked activity at 10 Hz, 1–3 mW. C, Upper left, tuning curve prior to pairing to 16 kHz, with poor responses to 16 kHz (d' : -1.9). Upper right, improved responses to the paired frequency immediately post-pairing in the same recording (d' : -1.2). Lower left, pre-pairing the tuning curve had discriminable responses to the paired frequency relative to other frequencies (d' : 1.3). Lower right, immediately post-pairing in the same animal, the discrimination has further improved (d' : 2.2). D, Summary of all individual pairings showing d' for the paired frequency pre- and post-pairing (pre d' : 0.4 ± 0.4 ; post d' : 1.0 ± 0.4 ; $n = 9$, $p = 0.042$).

responses across frequencies at the neural level is similar to the 'exploratory' phase of increased responses to non-target frequencies observed behaviorally. In the second example recording, the neural responses indicated the paired frequency was detectable compared to unpaired frequencies and the neural d' was relatively high (Fig. 6C, bottom). Regardless, pairing could further refine responses (Fig. 6C, lower right). Across all nine pairing episodes, d' values measured for the paired frequency increased from 0.4 ± 0.4 to 1.0 ± 0.4 ($p < 0.05$, Student's paired two-tailed t -test) immediately after pairing (Fig. 6D).

Several of these pairing episodes were not the first pairing, but occurred 60–120 min later (Fig. 7A) after a previous pairing. A series of three locus coeruleus pairings during a six hour recording is shown in Fig. 7B,C. The first pairing increased the d' at this recording site from 0.9 to 1.2, while the second pairing had no additional effect on tone-evoked responses or d' . However, the third pairing refined the tuning profile to accentuate the differences between the paired 16 kHz frequency and spectrally-similar tones, enhancing d' from 1.2 to 1.9. These changes took tens of minutes to develop after the pairing episodes (Fig. 7B,C). Thus neural responses in auditory cortex have complex dynamics reflecting the behavioral changes that occur over the course of reversal learning, and sensitive to one or more episodes of locus coeruleus pairing in behaving rats.

3. Discussion

The locus coeruleus is the primary source of norepinephrine for the central nervous system. Activity in locus coeruleus can enable long-lasting changes in sensory input due to changes throughout the central nervous system including within the auditory thalamus, auditory cortex, and locus coeruleus itself (Devilbiss et al., 2006; Edeline et al., 2011; Martins and Froemke, 2015). Here we focused on relating the dynamics and discriminability of activity in auditory cortex to behavioral performance. Consistent with previous results (Martins and Froemke, 2015), we found that pairing locus coeruleus stimulation with a previously unrewarded tone on an auditory perceptual go/no-go task accelerated the rate at which animals learned to accurately respond to the newly rewarded, paired tone. Recordings from auditory cortex also showed that discrimination of a tone paired with locus coeruleus stimulation was increased post-pairing and was further potentiated with multiple pairings. While other neuromodulators such as acetylcholine and dopamine can also promote neuroplasticity (Bao et al., 2001; Froemke et al., 2013; Froemke, 2015), the effects of norepinephrine and locus coeruleus stimulation tend to be more potent. A single episode of locus coeruleus pairing can improve sensory detection for days to weeks (Edeline et al., 2011; Martins and Froemke, 2015).

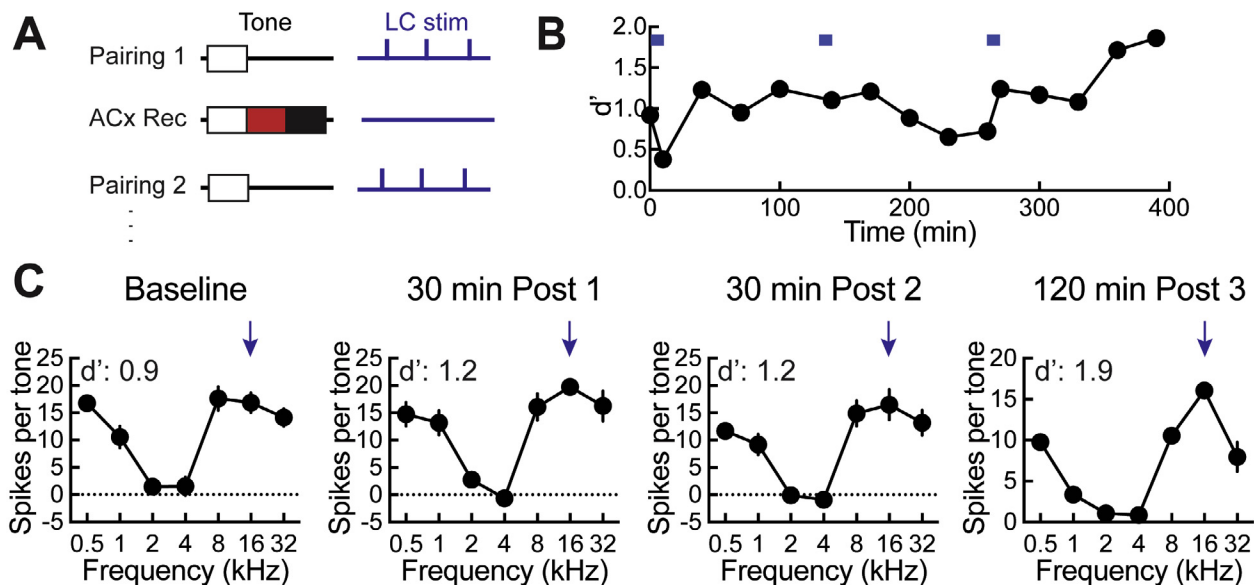


Fig. 7. Effects on cortical tuning curves of multiple consecutive episodes of locus coeruleus pairing. **A**, Schematic showing paradigm for multiple pairings. After a pairing session, auditory cortical responses to pseudo-random tones were collected at intervals of 30 min, and then 60–120 min later another pairing session was conducted. **B**, Example of a recording from auditory cortex with three pairing sessions each separated by 120 min. d' for the paired frequency is shown starting at baseline. **C**, Selected tuning curves from B. Left, baseline tuning for the paired frequency, 16 kHz (d' : 0.9). Middle left, tuning curve 30 min after the first pairing (d' : 1.2). Middle right, tuning curve 30 min after the second pairing (d' : 1.2). Right, the tuning curve 120 min after the third pairing (d' : 1.9).

It remains a major challenge in neuroscience to connect long-term synaptic plasticity to learned changes in behavior. In this study, we utilized auditory psychophysical methods to monitor consequences of plasticity due to locus coeruleus pairing. ‘Reversal learning’ (here referring to a change in reward contingency from one tone to another) is ideal for documenting the dynamics of perceptual learning and differences in these processes between groups of animals. This is because during the initial behavioral shaping and baseline training, animals must express several types of learning, including motor skills and habituating to the environment. Conversely, during reversal learning, stimulus-response associations can be more easily isolated for study. Although the averaged behavioral changes appeared incremental after switching reward contingency, changes could happen within single behavioral sessions in individual animals. Animals receiving locus coeruleus pairing made these transitions earlier than control animals, moving more quickly through the exploratory phase and refining responses to the new target tone, similar to a shift from exploration to exploitation (Doya, 2002; Usher et al., 1999; Yu and Dayan, 2005). These behavioral shifts occasionally occurred after 1–2 day breaks, which may suggest an interesting enhancement in performance following a longer consolidation period. However, there was no significant difference between locus coeruleus paired and control animals in the timing and number of these breaks, which did not occur systematically across animals or experimental groups. The possible significance of the effect of the breaks requires additional investigation.

While locus coeruleus pairing animals had lower rates of perseveration and exploration than controls, we also observed differences in performance between animals reversed to tones with a one-octave vs two-octave spectral difference, specifically in terms of exploration. This decrease in exploration is similar to that seen in two-forced alternative choice tasks, where little exploration is necessary when a reversal occurs (Costa et al., 2015). Even when well-trained animals have higher response rates to the tones closest to the target-tone, brief exploration would be sufficient for discovery of the new target stimulus. It is possible that in the one-octave version of the task, the ‘explore-exploit’ phase is

minimized already due to the lower need for exploration compared to the two-octave version of the task. However, in both versions of the task, increased locus coeruleus activity could reduce responses to the original target tone or best frequency (Martins and Fromeke, 2015).

It had previously been shown that locus coeruleus activity was sensitive to changes in reward contingency and other surprising behavioral events (Aston-Jones and Cohen, 2005; Sara, 2009). This includes responses to conditioned stimuli such as sensory cues. The circuit organization and plasticity that produces such responses remains open for further investigation, as do the differential mechanisms of noradrenergic plasticity that affect auditory thalamus, cortex, and other regions of the central nervous system.

4. Experimental procedure

4.1. Surgical preparation

All procedures were approved under an NYU IACUC Institutional Animal Care and Use Committee protocol, in animals kept in a vivarium on a 12/12 h light/dark cycle and housed individually or in pairs. Female Long-Evans, TH-Cre, and Sprague-Dawley rats 3–5 months old were anesthetized with ketamine (1.2 ml/kg) and dexmedetomidine (1.0 ml/kg). Viral injections were performed using stereotaxic coordinates (from lambda, in mm: 3.7 posterior, 1.2 lateral, 5.6–6 ventral) with the head at a 15° downward angle. A craniotomy was placed over the left locus coeruleus and location was verified during procedures by measuring responses multiunit responses to noxious stimuli (tail pinch) and other electrophysiological criteria (spontaneous rates), and afterwards using histological methods. Injections were performed with a 5 μ L Hamilton syringe and a 33 gauge needle. For optogenetic stimulation of locus coeruleus, we used three different methods. One animal was transgenic, with Cre recombinase expressed in TH+ cells, allowing for locus coeruleus restricted expression of Cre-inducible pAAV5-EF1 α -DIO-ChETA-EYFP (Witten et al., 2011). Another animal was a wild-type Sprague-Dawley, with CAV2-PRS-ChR2-mCherry (Hickey et al., 2014; Li et al., 2016) injected into the locus coeruleus.

leus, utilizing the PRS promoter (Hwang et al., 2001) to selectively express in the locus coeruleus noradrenergic neurons. Finally, a third animal was a wild-type Sprague-Dawley with pAAV5-CaMKII-ChETA-EYFP injected into locus coeruleus. For sham optogenetic stimulation, two TH-Cre Long-Evans rats were used. Either Cre-inducible pAAV5-EF1 α -DIO-ChETA-EYFP, pAAV5-EF1 α -DIO-EYFP, CAV2-PRS-ChR2-mCherry, or pAAV5-CaMKII-ChETA-EYFP virus was injected into locus coeruleus at 0.1 nl/s for a final injection volume of 1.2–1.5 μ L. For behavioral experiments, a calibrated optical fiber ferrule was then implanted in locus coeruleus, and the craniotomy and implant was sealed with silicone sealant and dental cement. For electrophysiology, the craniotomy was seal with silicone sealant for access after viral expression. For behavioral and electrophysiology experiments, virus was allowed two weeks for expression.

At the end of behavioral or electrophysiology experiments, animals were perfused with 4% paraformaldehyde, brains recovered, and embedded in Optimal Cutting Temperature compound prior to freezing at -80°C . Afterwards, 15 μm thick slices were cut from the brainstem and stained using standard immunohistochemistry histological methods. Staining for tyrosine hydroxylase (primary antibody 1:1000, Aves Labs catalog number TYH; secondary antibody, DYL488 anti-chicken, 1:500, Life Technologies Labs) was co-localized with YFP (Abcam #ab290).

4.2. Behavior

The behavioral task used here was similar to that we used previously (Carcea et al., 2017; Froemke et al., 2013; King et al., 2016; Martins and Froemke, 2015). Animals were trained on a go/no-go task to nosepoke in response to a target tone frequency for a food reward in $9'' \times 10'' \times 12''$ operant conditioning chambers (Med Associates, Inc.). Each chamber contained a speaker (on the right wall) calibrated across frequencies at 70 dB SPL, a food dispenser on the left wall and three nosepoke ports (two on either side of the food dispenser and one on the wall opposite). Each chamber was placed in a larger wood enclosure and insulated with foam. The measured background noise in each chamber was $<30\text{--}40$ dB SPL.

18 adult female Long-Evans and 2 adult female Sprague-Dawley rats were used in these behavioral studies. Animals were food restricted to maintain the weights at 80–85% of their initial pre-training weights. First, animals were shaped with two days of training to nosepoke for one food pellet. Next, rats were trained to nosepoke within 2.5 s after a target tone was played. When the rats had hit rates of $>80\%$, three non-target tones were introduced (2–16 kHz at one octave intervals excepting the target frequency), and animals were trained to hit rates $>90\%$, along with false positive rates $<40\%$. Finally, the non-target tones were expanded to six total (0.5–32 kHz at one octave intervals excepting the target frequency), and animals were trained to the same criteria. Target and non-target pure tones were 100 ms in duration presented in a pseudo-random order at 70 dB SPL. For correct trials, each trial ended at either the time of food pellet delivery (hit trials for targets) or 2.5 s after the tone (correct reject trials for non-targets). On error trials, failure to respond (miss trials for targets) as well as incorrect responses (false alarm trials for non-targets) were punished with a time-out of 7 s before the next trial began. Random nose pokes were punished with time-out as well. Rats self-initiated the trials by nosepoking in a different port than the 'response' port. After 0.5–1.5 s, either a target or non-target tone was played.

Animals that achieved criterion behavioral performance on the baseline task with the target tone of 4 kHz underwent surgery as described above, had optical fibers chronically implanted in left locus coeruleus, and were allowed to recover for about a week. At this point, animals were retrained on the baseline task (target tone 4 kHz) until original performance on the task was achieved.

Starting on the first day of reversal learning, the new target tone (16 kHz) was paired with activation of the locus coeruleus with blue light. For optogenetic stimulation, locus coeruleus-tone pairing was conducted at a rate of 3 Hz, for 5–10 min daily prior to behavioral testing. Specifically, tones were played at 3 Hz, and optogenetic stimulation of locus coeruleus began at tone onset. Tone duration was 100 ms and locus coeruleus optogenetic stimulation was 10 Hz, 10 ms pulses, 500 ms duration. The tone duration reflects that used in the behavioral context. The pairing protocol was continued until behavioral performance returned to baseline levels or at least seven days.

Behavioral performance was estimated with hit rate measurements (percent of times the rats respond to the target frequency) and the discriminability index d' (the difference in the z-scores for the distribution of responses to targets and for the distribution of responses to non-targets). d' values were computed as the difference in z-scores between hits and false positives: $d' = z(\text{hit rate}) - z(\text{false positive rate})$. Uninjected animals and the sham stimulated animal reversed from 4 kHz to 16 kHz (two octaves up in frequency) were used in analysis of the one-octave versus two-octave reversals as well as in the analysis of the locus coeruleus pairing versus control animals. Unless otherwise noted, all statistics and error bars are reported as means \pm s.e.m. although normality was not formally tested for all data sets, and p-values determined from Student's paired or unpaired two-tailed t-tests.

4.3. Electrophysiology

Experiments were carried out in a sound-attenuating chamber. Two wild-type Long-Evans animals injected in locus coeruleus with pAAV5-CaMKII-ChETA-EYFP and one TH-Cre Long-Evans animals injected in locus coeruleus with pAAV5-EF1 α -DIO-ChETA-EYFP were used. After at least two weeks of viral expression, the silicone sealant was removed, the craniotomy was re-opened in the same location over locus coeruleus, and position was re-verified by recording responses to tail pinch. An optrode was then placed. The optrode was constructed from a 10 mm long, 200 μm diameter optic fiber and a 0.5 M Ω tungsten electrode. The tungsten electrode was oriented such that the tip was 0.4–0.5 mm below the tip of the optic fiber. Once locus coeruleus was localized through multiunit recordings as described in the methods, the tip of the tungsten electrode portion of the optrode was advanced to the identified coordinates, and optically evoked responses were confirmed (Fig. 6B). A craniotomy was then performed over the left temporal lobe and the left auditory cortex was exposed. Pure tones (70 dB SPL, 0.5–32 kHz, 50 msec, 3 msec cosine on/off ramps) were delivered in pseudo-random sequence at 1 Hz. AI location was determined by mapping multiunit responses 500–700 μm below the surface using tungsten electrodes.

In vivo multi-unit recordings from AI were made with a Multi-clamp 700B amplifier (Molecular Devices). Recordings were obtained from 500 to 1000 μm below the pial surface. For locus coeruleus pairing, after recording baseline multi-unit activity responses to the pseudo-random tone sequence, a non-preferred tone of a given intensity level and frequency was repetitively presented for 10 min, concurrent with locus coeruleus optogenetic stimulation (500 ms, 10 Hz, 1–3 mW, 10 ms pulse) starting at tone onset. Locus coeruleus stimulation was then ceased and pseudo-random tone sequences were resumed. After 60–120 min, an additional pairing with the original paired tone was repeated, followed again by pseudo-random tone sequences. This paradigm was continued as long as cortical responses were viable. For analysis of tuning curve shifts, neural d' was calculated. These was computed as the difference in the z-score of the d' of the paired frequency and the average of the z-scores of the non-paired frequencies.

4.4. Statistics

Unless otherwise noted, all statistics and error bars are reported as means \pm SEM s.e.m. although normality was not formally tested for all data sets, and all p-values determined from Student's paired or unpaired two-tailed t-tests. For behavioral comparisons, t-tests were conducted on days 1–40 unless otherwise stated.

Acknowledgements

We thank Tony Pickering for providing the CAV2-PR5-ChR2-mCherry virus, Susan Sara for technical advice on targeting locus coeruleus for stimulation and recording, Elena Vazey for advice on use of viruses, and K. Kuchibhotla, K.A. Martin, and M. Semerkant for comments, discussions, and technical assistance. This work was supported by a Vilcek Scholar Award [to E.G.]; the Portuguese Foundation for Science and Technology [to A.R.O.M.]; a Katowitz/Radin NARSAD Young Investigator award [to I.C.]; a Hirschl/Weill-Caulier Career Award [to R.C.F.]; a Sloan Research Fellowship [to R.C.F.]; and the National Institutes of Health [grant number T32GM007308 to E.G., K99/R00-MH106744 to I.C., R01-DC003937 to M.A.S., and R01-DC012557 to R.C.F.]. Partial support was also received from a research contract from Cochlear Americas to J. Thomas Roland, Jr., M.D.

References

- Amaral, D.G., Sinnamon, H.M., 1977. The locus coeruleus: neurobiology of a central noradrenergic nucleus. *Prog Neurobiol.* 9, 147–196.
- Aston-Jones, G., Bloom, F.E., 1981. Activity of norepinephrine-containing locus coeruleus neurons in behaving rats anticipates fluctuations in the sleep-waking cycle. *J Neurosci.* 1, 876–886.
- Aston-Jones, G., Rajkowski, J., Kubiak, P., Alexinsky, T., 1994. Locus coeruleus neurons in the monkey are selectively activated by attended stimuli in a vigilance task. *J Neurosci.* 14, 4467–4480.
- Aston-Jones, G., Rajkowski, J., Kubiak, P., 1997. Conditioned responses of monkey locus coeruleus neurons anticipate acquisition of discriminative behavior in a vigilance task. *Neuroscience* 80, 697–715.
- Aston-Jones, G., Cohen, J.D., 2005. An integrative theory of locus coeruleus-norepinephrine function: adaptive gain and optimal performance. *Annu Rev Neurosci.* 28, 403–450.
- Bao, S., Chan, V.T., Merzenich, M.M., 2001. Cortical remodelling induced by activity of ventral tegmental dopamine neurons. *Nature.* 412, 79–83.
- Bear, M.F., Singer, W., 1986. Modulation of visual cortical plasticity by acetylcholine and noradrenaline. *Nature.* 320, 172–176.
- Berridge, C.W., Arnsten, A.F., Foote, S.L., 1993. Noradrenergic modulation of cognitive function: clinical implications of anatomical, electrophysiological and behavioural studies in animal models. *Psychol. Med.* 23, 557–564.
- Berridge, C.W., Waterhouse, B.D., 2003. The locus coeruleus-noradrenergic system: modulation of behavioral state and state-dependent cognitive processes. *Brain Res. Brain Res. Rev.* 42, 33–84.
- Bouret, S., Sara, S.J., 2004. Reward expectation, orientation of attention and locus coeruleus-medial frontal cortex interplay during learning. *Eur. J. Neurosci.* 20, 791–802.
- Bouret, S., Sara, S.J., 2005. Network reset: a simplified overarching theory of locus coeruleus noradrenaline function. *Trends Neurosci.* 28, 574–582.
- Butter, C.M., 1969. Perseveration in extinction and in discrimination reversal tasks following selective frontal ablations in macaca mulatta. *Physiol. Behavior.* 4, 163–1000.
- Carcea, I., Insanally, M.N., Froemke, R.C., 2017. Dynamics of auditory cortical activity during behavioural engagement and auditory perception. *Nat. Commun.* 8, 14412.
- Carter, M.E., Yizhar, O., Chikahisa, S., Nguyen, H., Adamantidis, A., Nishino, S., Deisseroth, K., de Lecea, L., 2010. Tuning arousal with optogenetic modulation of locus coeruleus neurons. *Nat. Neurosci.* 13, 1526–1533.
- Carter, M.E., Brill, J., Bonnavion, P., Huguenard, J.R., Huerta, R., de Lecea, L., 2012. Mechanism for Hypocretin-mediated sleep-to-wake transitions. *Proc. Natl. Acad. Sci. U.S.A.* 109, E2635–E2644.
- Castro-Alamancos, M.A., 2002. Role of thalamocortical sensory suppression during arousal: focusing sensory inputs in neocortex. *J. Neurosci.* 22, 9651–9655.
- Christie, M.J., Williams, J.T., North, R.A., 1989. Electrical coupling synchronizes subthreshold activity in locus coeruleus neurons in vitro from neonatal rats. *J. Neurosci.* 9, 3584–3589.
- Christie, M.J., Jelinek, H.F., 1993. Dye-coupling among neurons of the rat locus coeruleus during postnatal development. *Neuroscience* 56, 129–137.
- Chudasama, Y., Robbins, T.W., 2003. Dissociable contributions of the orbitofrontal and infralimbic cortex to Pavlovian autoshaping and discrimination reversal learning: Further evidence for the functional heterogeneity of the rodent frontal cortex. *J. Neurosci.* 23, 8771–8780.
- Constantinople, C.M., Bruno, R.M., 2011. Effects and mechanisms of wakefulness on local cortical networks. *Neuron* 69, 1061–1068.
- Costa, V.D., Tran, V.L., Turchi, J., Averbeck, B.B., 2015. Reversal learning and dopamine: a bayesian perspective. *J. Neurosci.* 35, 2407–2416.
- Devauges, V., Sara, S.J., 1990. Activation of the noradrenergic system facilitates an attentional shift in the rat. *Behav. Brain Res.* 39, 19–28.
- Devilbiss, D.M., Waterhouse, B.D., 2000. Norepinephrine exhibits two distinct profiles of action on sensory cortical neuron responses to excitatory synaptic stimuli. *Synapse* 37, 273–282.
- Devilbiss, D.M., Page, M.E., Waterhouse, B.D., 2006. Locus coeruleus regulates sensory encoding by neurons and networks in waking animals. *J. Neurosci.* 26, 9860–9872.
- Disney, A.A., Aoki, C., Hawken, M.J., 2007. Gain modulation by nicotine in macaque v1. *Neuron* 56, 701–713.
- Doya, K., 2002. Metalearning and neuromodulation. *Neural Netw.* 15, 495–506.
- Edeline, J.M., Manunta, Y., Hennevin, E., 2011. Induction of selective plasticity in the frequency tuning of auditory cortex and auditory thalamus neurons by locus coeruleus stimulation. *Hear Res.* 274, 75–84.
- Escanilla, O., Arrellanos, A., Karnow, A., Ennis, M., Linster, C., 2010. Noradrenergic modulation of behavioral odor detection and discrimination thresholds in the olfactory bulb. *Eur. J. Neurosci.* 32, 458–468.
- Foote, S.L., Freedman, R., Oliver, A.P., 1975. Effects of putative neurotransmitters on neuronal activity in monkey auditory cortex. *Brain Res.* 86, 229–242.
- Froemke, R.C., Carcea, I., Barker, A.J., Yuan, K., Seybold, B.A., Martins, A.R., Zaika, N., Bernstein, H., Wachs, M., Levis, P.A., Polley, D.B., Merzenich, M.M., Schreiner, C.E., 2013. Long-term modification of cortical synapses improves sensory perception. *Nat. Neurosci.* 16, 79–88.
- Froemke, R.C., 2015. Plasticity of cortical excitatory-inhibitory balance. *Annu. Rev. Neurosci.* 38, 195–219.
- Froemke, R.C., Schreiner, C.E., 2015. Synaptic plasticity as a cortical coding scheme. *Curr. Opin. Neurobiol.* 35, 185–199.
- German, D.C., Walker, B.S., Manaye, K., Smith, W.K., Woodward, D.J., North, A.J., 1988. The human locus coeruleus: computer reconstruction of cellular distribution. *J. Neurosci.* 8, 1776–1788.
- Gu, Q., 2002. Neuromodulatory transmitter systems in the cortex and their role in cortical plasticity. *Neuroscience* 111, 815–835.
- Hasselmo, M.E., Sarter, M., 2011. Modes and models of forebrain cholinergic neuromodulation of cognition. *Neuropsychopharmacology* 36, 52–73.
- Hickey, L., Li, Y., Fyson, S.J., Watson, T.C., Perrins, R., Hewinson, J., Teschemacher, A.G., Furue, H., Lumb, B.M., Pickering, A.E., 2014. Optoactivation of locus coeruleus neurons evokes bidirectional changes in thermal nociception in rats. *J. Neurosci.* 34, 4148–4160.
- Hirata, A., Aguilar, J., Castro-Alamancos, M.A., 2006. Noradrenergic activation amplifies bottom-up and top-down signal-to-noise ratios in sensory thalamus. *J. Neurosci.* 26, 4426–4436.
- Hwang, D.Y., Carlezon, W.A., Isacson, O., Kim, K.S., 2001. A high-efficiency synthetic expression selectively promoter that drives transgene in noradrenergic neurons. *Hum. Gene Ther.* 12, 1731–1740.
- Ishimatsu, M., Williams, J.T., 1996. Synchronous activity in locus coeruleus results from dendritic interactions in pericoerulear regions. *J. Neurosci.* 16, 5196–5204.
- Judge, P.G., Evans, D.W., Schroepfer, K.K., Gross, A.C., 2011. Perseveration on a reversal-learning task correlates with rates of self-directed behavior in nonhuman primates. *Behav. Brain Res.* 222, 57–65.
- King, J., Shehu, L., Roland Jr., J.T., Svirsky, M.A., Froemke, R.C., 2016. A physiological and behavioral system for hearing restoration with cochlear implants. *J. Neurophysiol.* 116, 844–858.
- Kuchibhotla, K.V., Gill, J.V., Lindsay, G.W., Papadoyannis, E.S., Field, R.E., Sten, T.A., Miller, K.D., Froemke, R.C., 2017. Parallel processing by cortical inhibition enables context-dependent behavior. *Nat. Neurosci.* 20, 62–71.
- Levitt, P., Moore, R.Y., 1978. Noradrenaline neuron innervation of the neocortex in the rat. *Brain Res.* 139, 219–231.
- Li, Y., Hickey, L., Perrins, R., Werlen, E., Patel, A.A., Hirschberg, S., Jones, M.W., Salinas, S., Kremer, E.J., Pickering, A.E., 2016. Retrograde optogenetic characterization of the pontospinal module of the locus coeruleus with a canine adenoviral vector. *Brain Res.* 1641, 274–290.
- Manella, L.C., Petersen, N., Linster, C., 2017. Stimulation of the locus coeruleus modulates signal-to-noise ratio in the olfactory bulb. *J. Neurosci.* 37, 11605–11615.
- Manunta, Y., Edeline, J.M., 2004. Noradrenergic induction of selective plasticity in the frequency tuning of auditory cortex neurons. *J. Neurophysiol.* 92, 1445–1463.
- Martins, A.R., Froemke, R.C., 2015. Coordinated forms of noradrenergic plasticity in the locus coeruleus and primary auditory cortex. *Nat. Neurosci.* 18, 1483–1492.
- Navarra, R.L., Clark, B.D., Gargiulo, A.T., Waterhouse, B.D., 2017. Methylphenidate enhances early-stage sensory processing and rodent performance of a visual signal detection task. *Neuropsychopharmacology* 42, 1326–1337.
- Nieuwenhuis, S., Aston-Jones, G., Cohen, J.D., 2005. Decision making, the P3, and the locus coeruleus-norepinephrine system. *Psychol. Bull.* 131, 510–532.
- Reil, J.C., 1809. Untersuchungen über den Bau des grossen Gehirns im Menschen. *Arch. Physiol. (Halle)* 9, 136–524.
- Roberts, M.J., Thiele, A., 2008. Spatial integration and its moderation by attention and acetylcholine. *Front Biosci.* 13, 3742–3759.
- Roussel, B., Buguet, A., Bobillier, P., Jouvet, M., 1967. Locus coeruleus, sommeil paradoxal, et noradrenaline cérébrale. *C R Seances Soc Biol Fil.* 161, 2537–2541.

- Russell, G.V., 1955. The nucleus locus coeruleus (dorsolateralis tegmenti). *Tex. Rep. Biol. Med.* 13, 939–988.
- Sara, S.J., Devauges, V., 1988. Priming stimulation of locus coeruleus facilitates memory retrieval in the rat. *Brain Res.* 438, 299–303.
- Sara, S.J., 2009. The locus coeruleus and noradrenergic modulation of cognition. *Nat. Rev. Neurosci.* 10, 211–223.
- Steriade, M., 1997. Synchronized activities of coupled oscillators in the cerebral cortex and thalamus at different levels of vigilance. *Cereb. Cortex.* 7, 583–604.
- Swanson, L.W., 1976. The locus coeruleus: a cytoarchitectonic, Golgi and immunohistochemical study in the albino rat. *Brain Res.* 110, 39–56.
- Usher, M., Cohen, J.D., Servan-Schreiber, D., Rajkowski, J., Aston-Jones, G., 1999. The role of locus coeruleus in the regulation of cognitive performance. *Science* 283, 549–554.
- Vazey, E.M., Aston-Jones, G., 2014. Designer receptor manipulations reveal a role of the locus coeruleus noradrenergic system in isoflurane general anesthesia. *Proc. Natl. Acad. Sci. U.S.A.* 111, 3859–3864.
- Wenzel, J., Wenzel, C., 1812. *De Penitiori Structura Cerebri Hominis et Brutorum*. Vol., Tübingen.
- Witten, I.B., Steinberg, E.E., Lee, S.Y., Davidson, T.J., Zalocusky, K.A., Brodsky, M., Yizhar, O., Cho, S.L., Gong, S., Ramakrishnan, C., Stuber, G.D., Tye, K.M., Janak, P. H., Deisseroth, K., 2011. Recombinase-driver rat lines: tools, techniques, and optogenetic application to dopamine-mediated reinforcement. *Neuron* 72, 721–733.
- Yu, A.J., Dayan, P., 2005. Uncertainty, neuromodulation, and attention. *Neuron* 46, 681–692.