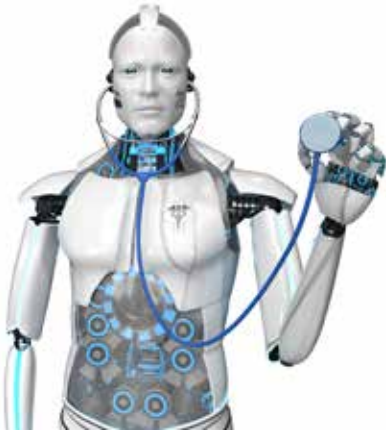


# EXECUTIVE INTRODUCTION

Imagine a medical assistant robot that could hold an arm, a leg, a torso or head fully supported and at the perfect height and angle-indefinitely. Even better, the robot would never need a rest, a paycheck, a day off, a covid test, or a repair. Imagine the same robot moving patients up and down and side to side, thereby protecting nurses and assistants from back and shoulder injuries often occurring during common everyday activities. Tasks like turning a patient to prevent bed sores, propping for feeding, raising legs to promote circulation or cleaning a BM. In addition, the robot could exercise limbs for therapy or hold them at the perfect angle and height to promote better healing. Now imagine that robot weighs the same as a half-gallon of milk and fits into a backpack or duffel bag. So, in addition to benefiting hospital nurses and A.L.F. workers, traveling healthcare workers and family caregivers could use the device as well.



Introducing the revolutionary Nurse's Easy Lift and Positioner. It's a mattress-top assistant that protects nurses from injuries while providing patients with a secure platform from which they can be lifted and held. The device aids 31 medically necessary functions via 11 body contoured cushions, each more comfortable and secure than a mushy pillow tower or small gripping hands.

At its core, The Nurse's Easy Lift and Positioner is an ultra-light and maneuverable "car jack" with a large base below and body-contoured cushions above. The device goes up and down via a small battery-powered lift driver, which has a socket end that attaches to the lift. At less than four pounds each, both the lift and rechargeable socket driver are light enough for a six-year-old to raise above their head. Even more remarkable is that the carbon fiber lift and powered driver can both handle moving the body parts of a 300 pound person. (see video)

The device utilizes a large base for stability, a height and angle adjustable screw-driven lift, a cushion mount providing structure to each cushion and a sculpted cushion on top. These eleven interchangeable body-contoured cushions are configured to optimally raise and lower a patient's arms, torso, legs, head, back and more.

All elements of the device are ultralight and ultra-strong, being made exclusively of Carbon Fiber having Aluminum, Titanium, Steel or Nylon hardware. The Nurse's Easy Lift and Positioner utilizes the advantageous mechanics of jack technology modified to suit the specific needs of an attendant wishing to lift, lower, position or maneuver a particular body part. This is particularly needed with an immobile, obese, paralyzed or otherwise incapacitated patient. In addition, the device will aid in daily turning of patients, pulmonary relief via leg elevation and enhanced healing by holding appendages still and securely at virtually any angle or height for an unlimited amount of time. These are essentially, all of the tasks a million-dollar robot would do. But medical workers don't

need the entire robot, just the robot's arm, hovering exactly where they need it to be. And that's exactly what the Nurse's Easy Lift and Positioner delivers. In addition, it is noteworthy to mention (Via use of our solo assistant patient strap) nurses can use the device completely by themselves.

- The device can be used underwater or in an MRI since all materials in the construction of the lift are non-metallic. (Nylon or Titanium bolts are options).
- We believe doctors, therapists, assistants and nurses will communicate their specific needs over time, resulting in new cushion designs.
- A Hoyer lift takes a worker 10-15 minutes of preliminary set up just to place a patient in a sling. How many nurses "skip it" for this reason and risk personal injury? Our device has no sling (pushes from below) usually taking less than 15 seconds to load patients into its comfortable, enveloping cushion.
- Nurses have among the highest injury rates of any profession and desperately need this device along with family members caring for elderly at home. According to surveys by the Department of Labor's Bureau of Labor Statistics (BLS), there are more than 35,000 back and other injuries among nursing employees every year, severe enough that they have to miss work. The most common nature of injury among RN's was sprains, strains and tears.

In today's competitive staffing environment, medical employers need to consider the other benefits of the lift. According to the latest research, 90% of employers plan to make "enhancing the employee experience" a top priority in 2022. After all, a safe and happy workplace is the key to attracting and keeping great employees. This is especially true in the medical industry where hospitals often pay staffing companies tens of thousands of dollars to acquire a new hire and RN's are being lured away by what they perceive as better institutions every day.

In that vein, The Nurse's Easy Lift and Positioner's presence at work is a constant reminder to both patient and staff that the facility they are in cares about their well being by purchasing the most modern and functional equipment for their comfort, safety, healing and everyday tasks.

With this acquisition, hospitals benefit from not only fewer nurse injuries, lower insurance premiums and more comfortable patients but staff and patients see with their own eyes, new modern healthcare equipment being provided by the first-class facility they have chosen to attend.

\*<https://www.bls.gov/opub/mlr/2018/article/occupational-injuries-and-illnesses-among-registered-nurses.htm>

