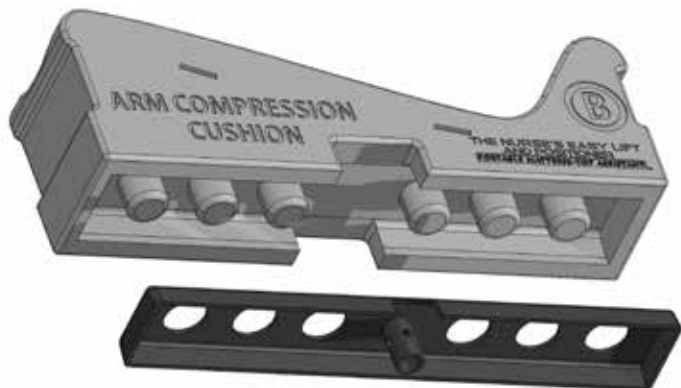


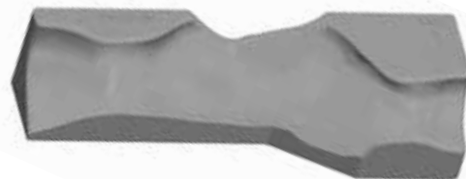
ELEVEN SOFT YET FIRM BODY CONTOURED CUSHIONS. THE TUBES ON THE BOTTOM OF EACH CUSHION FIT SNUGLY INTO THE HOLES OF THE MOUNT. THIS HARD MOUNT DISAPPEARS INSIDE THE CUSHION'S PERIMETER WALL ADDING EVEN MORE SURFACE AREA FOR GRAB. THE MOUNT SERVES AS AN INDO SKELETON FOR THE CUSHION WHOSE TUBES AND WALLS PROVIDE SOLID PATIENT HOLD. THE CUSHION MOUNT PERFORMS DOUBLE DUTY HOLDING THE CUSHION ONTO THE LIFT AS WELL.



ARM COMPRESSION CUSHION



TURNING CUSHION



FOOT, CALF, HAMSTRING FLEX CUSHION

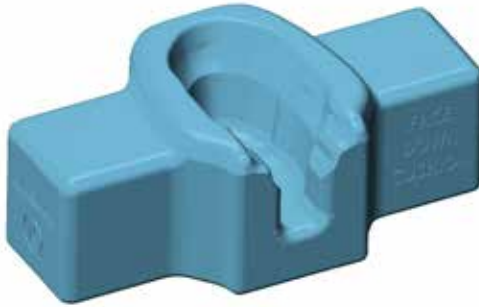
LEGS
CUSHION



UPPER
BACK
CUSHION



FACE DOWN CUSHION



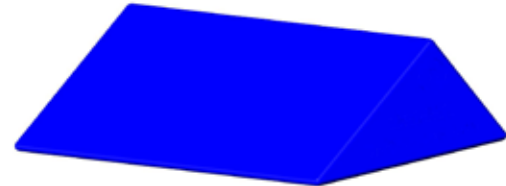
NECK SUPPORT CUSHION



SCIATICA RELIEF CUSHION



WEDGE CUSHION



TILTING TORSO CUSHION



ABDOMINAL SUPPORT CUSHION

