



BATTERY

CATALOGUE



Automotive - Commercial

Automotive

Batteries For Cars And Light Commercial Vehicles





**START
STOP**

Start - Stop

Start-Stop Technology that is designed to reduce fuel consumption and carbon dioxide emissions of vehicles, leads to an increase in the electrical needs of the vehicles. In these systems, batteries with high cycle life and high charging capacity are required to be used. Castrol Battery's product range offers different types of EFB and AGM batteries suitable for Start-Stop system.



Absorbent Glass Mat Technology

Castrol AGM batteries are VRLA type batteries developed with AGM Technology, which are suitable for use in vehicles featuring advanced Start-Stop technology with regenerative braking system. Thanks to the special internal structure design of AGM batteries and the VRLA technology, they have 3 times longer cycle life and high charging characteristics compared to flooded type batteries. Castrol Battery AGM product line, includes batteries suitable for all types of vehicles.

Superior Technical Features



Quick charge acceptance for Start-Stop technology



Up to 3 times longer cycle life



Innovative products for Start-Stop vehicles supporting reduced carbon dioxide emission



Up to 40% higher performance than standard batteries



Higher performance under extreme climate conditions compared to standard batteries



Patented calcium (Ca) alloy grid technology

VRLA



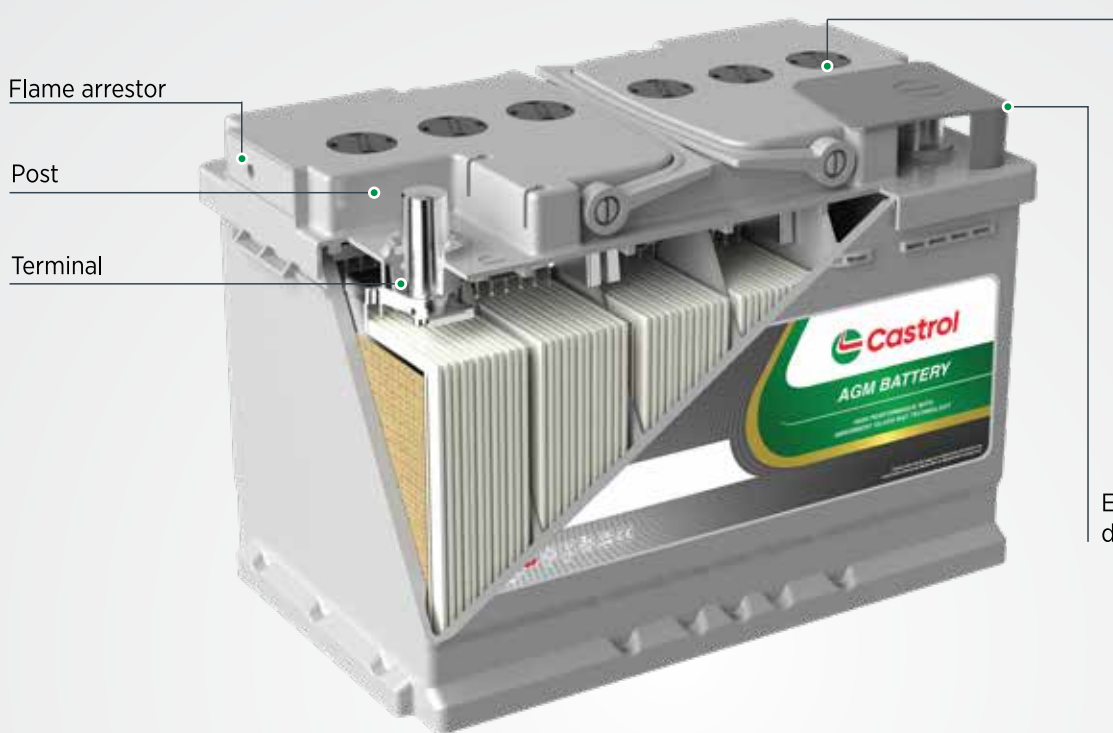
Exclusively designed valve system with pressure control (VRLA) and maintenance-free product technology



Advanced active material exclusively designed for AGM Start-Stop technology



More vibration resistant compared to standard batteries



Flame arrestor

Post

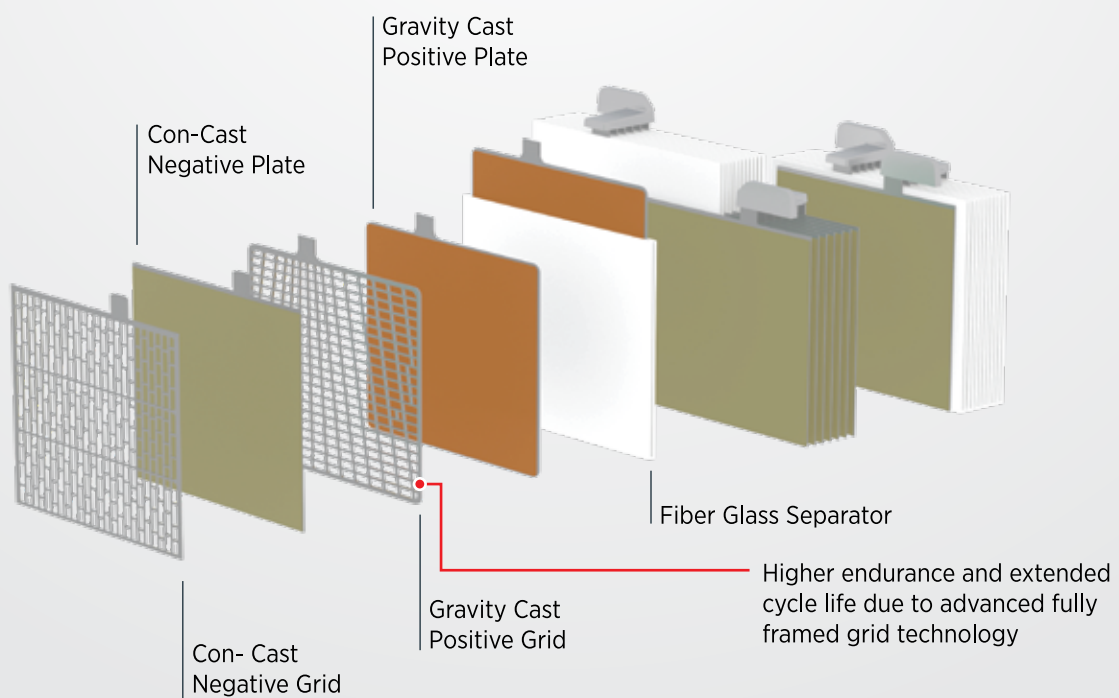
Terminal

VRLA



Exclusively designed valve system with pressure control (VRLA) and maintenance-free product technology

Exclusively designed lid



Gravity Cast
Positive Plate

Con-Cast
Negative Plate

Fiber Glass Separator

Gravity Cast
Positive Grid

Con- Cast
Negative Grid

Higher endurance and extended cycle life due to advanced fully framed grid technology

Enhanced Flooded Battery Technology

Castrol EFB batteries are flooded type batteries developed for use in vehicles with Start-Stop technology. Thanks to their reinforced internal structure, they have 2 times longer cycle life and high charging characteristics compared to standard flooded type batteries. Castrol Battery EFB product line includes batteries suitable for European and Japanese vehicle models.

Superior Technical Features



Quick charge acceptance for Start-Stop technology



Up to 2 times longer cycle life



Innovative products for Start-Stop vehicles supporting reduced carbon dioxide emission



Up to 30% higher performance than standard batteries



Higher performance under extreme climate conditions compared to standard batteries



Patented calcium (Ca) alloy grid technology



Sealed maintenance free safe lid technology



Advanced active material exclusively designed for micro-hybrid Start-Stop technology



More vibration resistant compared to standard batteries



Flame arrestor

Exclusively designed inside lid labyrinth structure

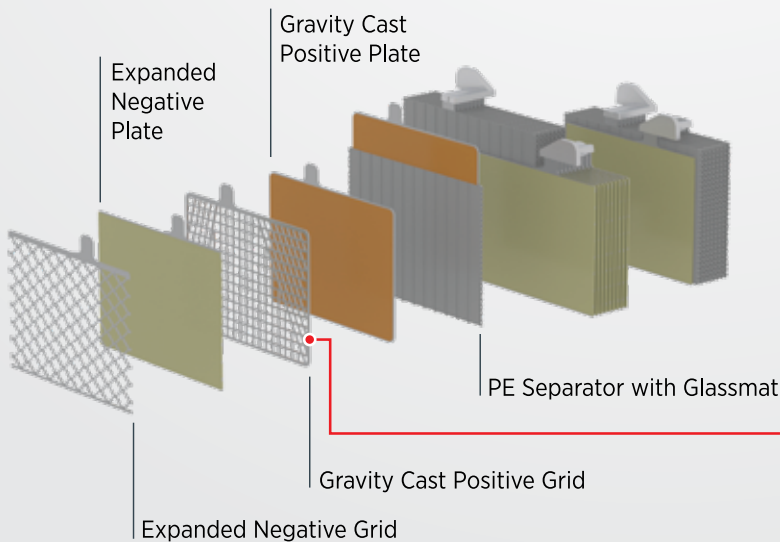
Sealed maintenance free safe lid technology

Exclusive design, ergonomic handle



Post

Terminal



Expanded Negative Plate

Gravity Cast Positive Plate

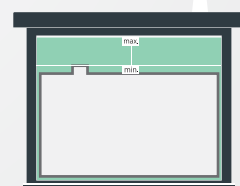
PE Separator with Glassmat

Gravity Cast Positive Grid

Expanded Negative Grid



Electrolyte reserve in standard batteries



Electrolyte reserve in CASTROL EFB batteries

Higher endurance and extended cycle life due to advanced fully framed grid technology

Superior Flooded Battery Technology

Castrol batteries are flooded type batteries featuring SLI Technology, which are suitable for use in cars of all classes and light commercial vehicles. They meet the starter need of the vehicle and supply necessary energy when the engine is not running.

These are the products, which are designed to meet increasing electrical needs of the vehicles, with advanced technology and have a long service life. These are the products, which meet high performance and starter current needs of the vehicles under challenging climate conditions. They feature enhanced performance and have a long service life.

Superior Technical Features



Up to 25% higher performance than standard batteries



Higher performance under extreme climate conditions compared to standard batteries



Patented calcium (Ca) alloy grid technology



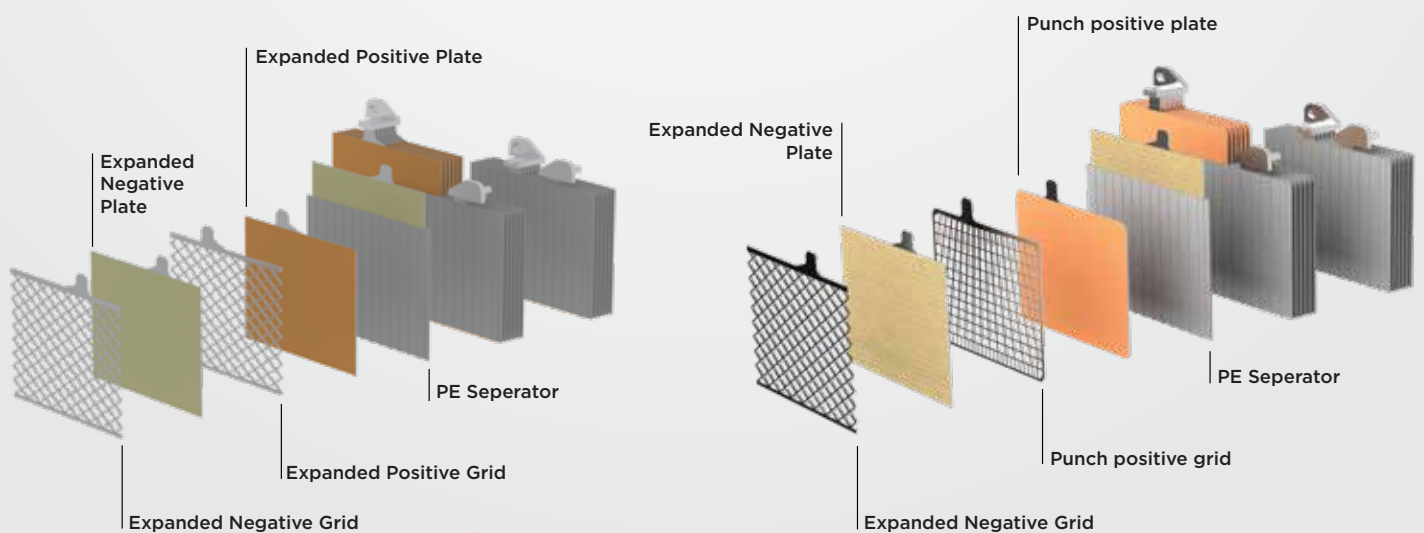
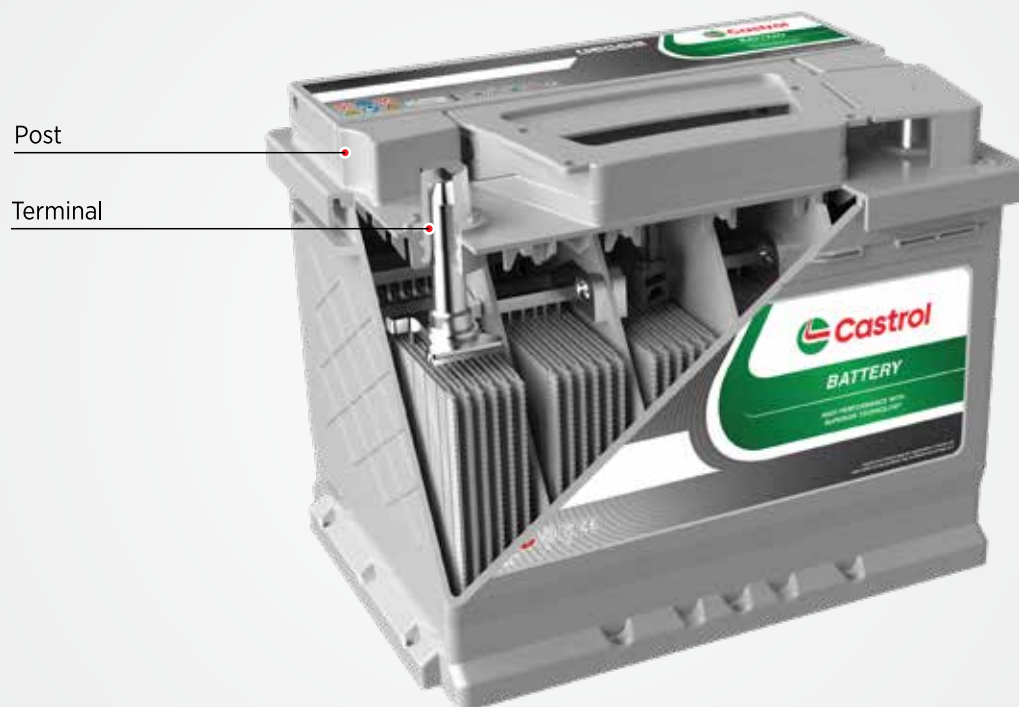
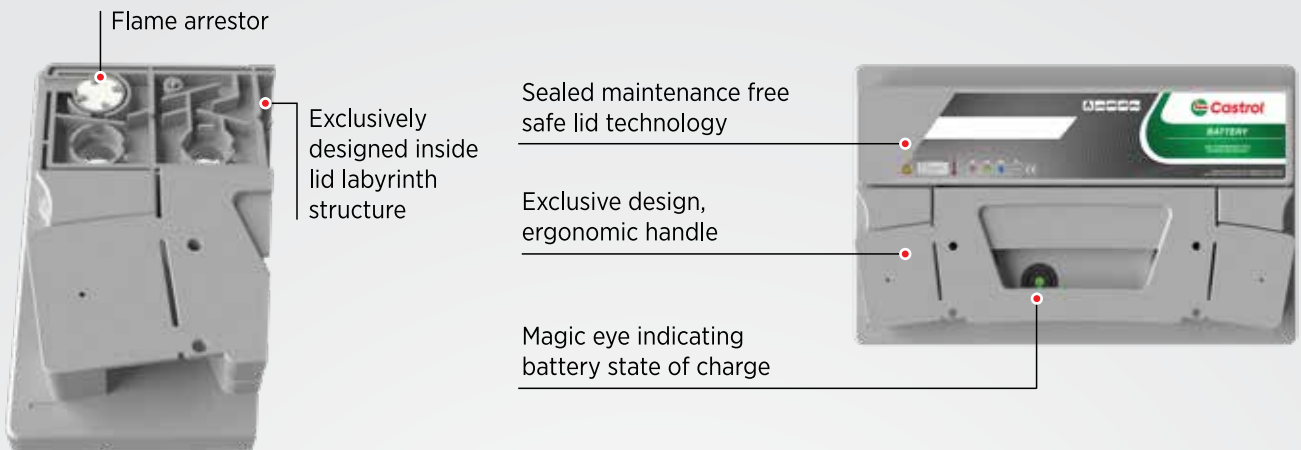
Sealed maintenance free safe lid technology



Advanced active material exclusively formulated for SLI technology



More vibration resistant compared to standard batteries



Heavy Commercial

Batteries For Commercial Vehicles





Commercial Batteries

Castrol Commercial batteries are flooded type batteries featuring EFB and SLI technology, which are suitable for use in commercial vehicles. They meet the starter need of the vehicle and supply necessary energy when the engine is not running. EFB batteries are high performance products developed for use in commercial vehicles featuring Start-Stop technology. SLI batteries, which are suitable for use in standard commercial vehicles, in order to meet the electrical needs.



Sealed Maintenance Free (SMF) Battery Technology

Sealed maintenance free batteries are flooded type batteries manufactured with SMF technology, which are developed to meet the energy needs of commercial and heavy commercial vehicles.

They can be used in severe operating conditions thanks to its high vibration resistance. It is sealed maintenance-free with its calcium (Ca) alloy grid structure and does not require extra maintenance service under suitable conditions. These are heavy duty batteries featuring special lid technology offering high safety with central gas outlet system and flame arrestor.

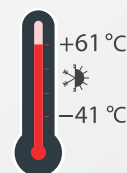
Superior Technical Features



Advanced patented calcium (Ca) alloy grid technology exclusively designed for SMF commercial batteries



Advanced active material designed for SMF commercial batteries



Higher performance under extreme climate conditions compared to standard batteries



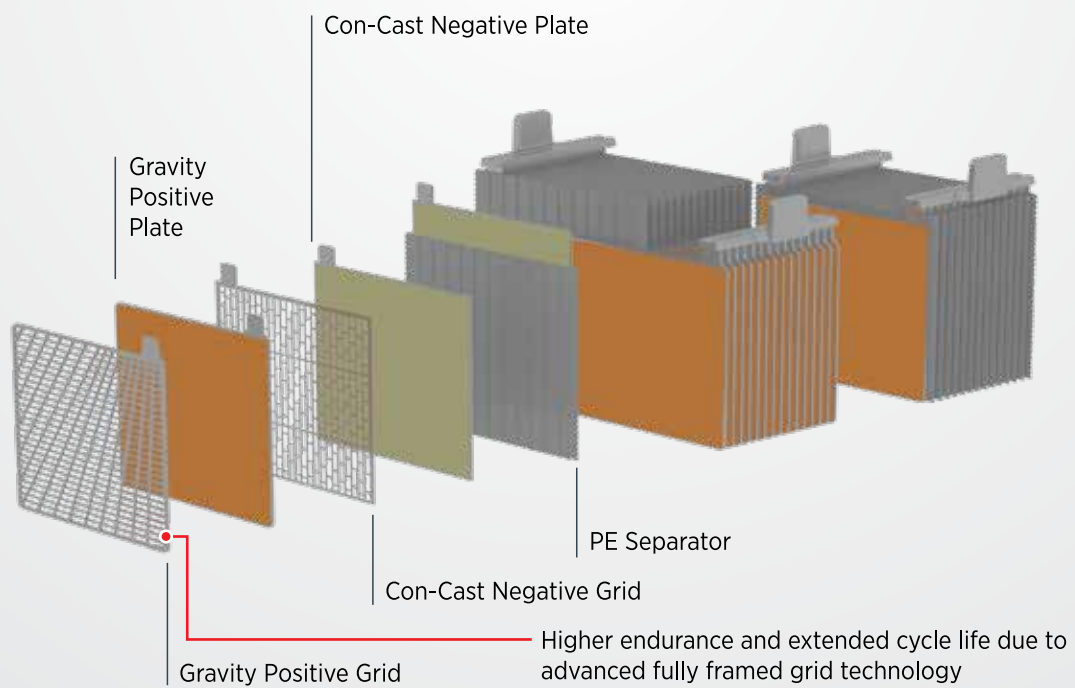
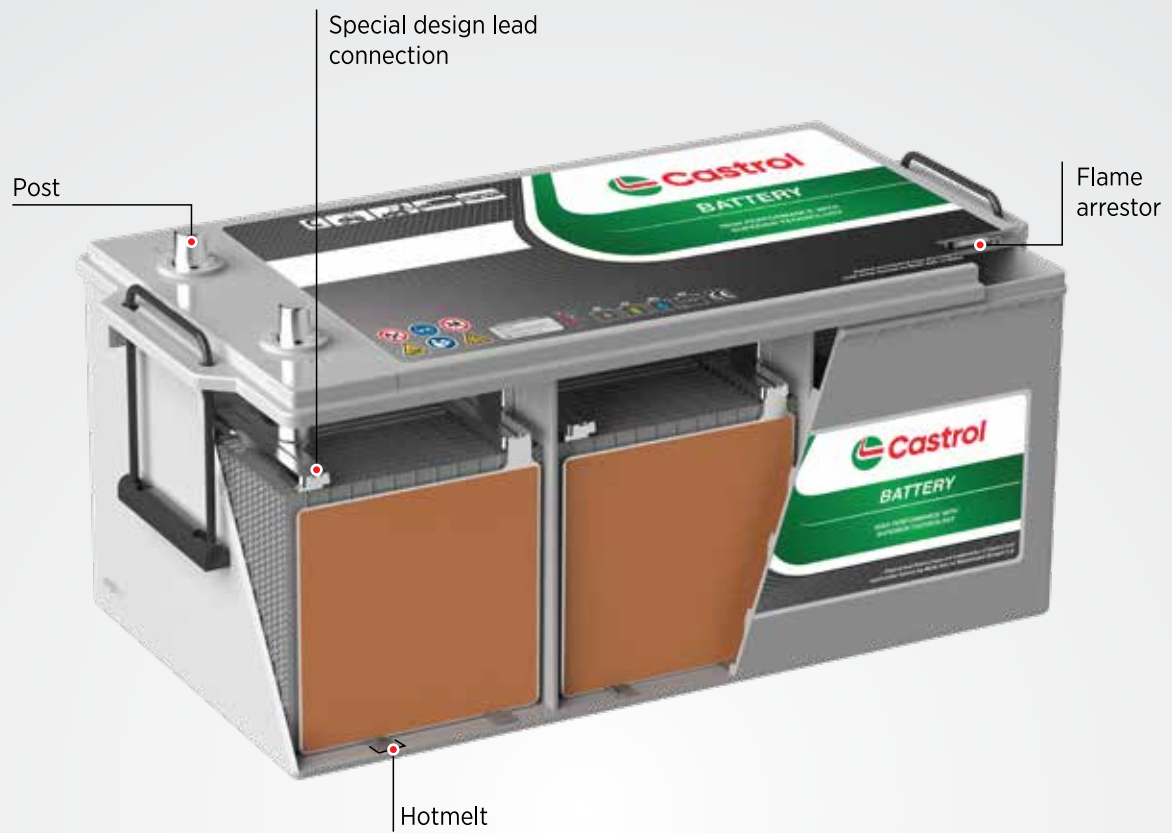
Sealed maintenance-free product technology



Shelf life up to 18 months under suitable conditions



Meets V2 vibration resistance requirements according to EN 50342



Maintenance Free (MF) Battery Technology

Castrol Maintenance Free Batteries are flooded type batteries manufactured with SLI technology, which are developed to meet the energy needs of commercial and heavy commercial vehicles. They can be used in severe operating conditions thanks to its high vibration resistance. It is maintenance-free with its calcium (Ca) alloy grid structure and does not require extra maintenance service under suitable conditions.

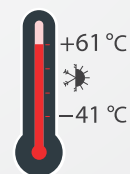
Superior Technical Features



Advanced patented calcium (Ca) alloy grid technology exclusively designed for SLI heavy duty batteries



Advanced active material designed for SLI heavy duty batteries



Higher performance under extreme climate conditions compared to standard batteries



Maintenance-free product technology



Shelf life up to 15 months under suitable conditions



Meets V2 vibration resistance requirements according to EN 50342

Special labyrinth vent plug

Post

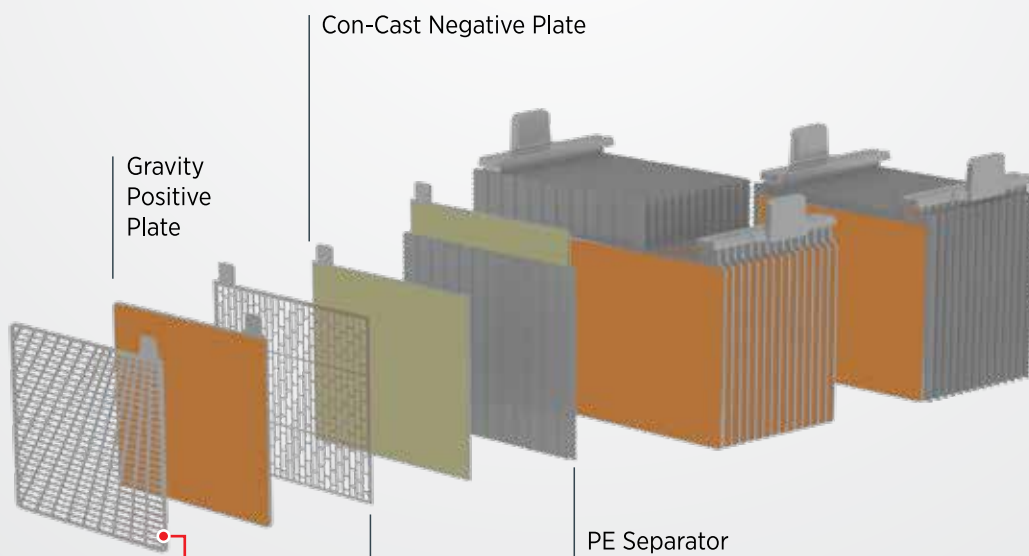


Special design lead connection

Hotmelt

Con-Cast Negative Plate

Gravity Positive Plate



PE Separator

Con-Cast Negative Grid

Gravity Positive Grid

Higher endurance and extended cycle life due to advanced fully framed grid technology

BATTERY REPLACEMENT CHART

Replaced battery of the vehicle



Standard
Battery



Start-Stop
EFB Battery



Start-Stop
AGM Battery



✓	✗	✗
✓	✓	✗
✗	✗	✓



Replace with same
technology battery



Replace with same
technology battery

*EFB batteries are usually placed next to the engine, AGM batteries are placed inside the trunk or under the seat as they are affected by heat.

AUTOMOTIVE

AGM

Type		Capacity at 20 hour rate, +25 °C Ah	CCA EN (A)	Layout	Terminal	Holddown	Overall dimensions (mm)			
BOX	CASTROL CODE						Lenght mm.	Width mm.	Height Except Term. mm	Height mm.
L1	CST.AGM.L1.50.056.A	50	560	0	1	B13	207	175	190	190
L2	CST.AGM.L2.60.068.A	60	680	0	1	B13	242	175	190	190
L3	CST.AGM.L3.70.076.A	70	760	0	1	B13	278	175	190	190
L4	CST.AGM.L4.80.080.A	80	800	0	1	B13	315	175	190	190
L5	CST.AGM.L5.95.090.A	95	900	0	1	B13	353	175	190	190

L1



L2



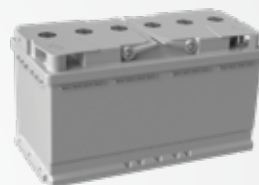
L3



L4



L5



EFB

Type		Capacity at 20 hour rate, +25 °C Ah	CCA EN (A)	Layout	Terminal	Holddown	Overall dimensions (mm)			
BOX	CASTROL CODE						Lenght mm.	Width mm.	Height Except Term. mm	Height mm.
L2	CST.EFB.L2.63.060.A	63	600	0	1	B13	242	175	190	190
L3	CST.EFB.L3.72.072.A	72	720	0	1	B13	278	175	190	190
LB3	CST.EFB.LB3.65.065.A	65	650	0	1	B13	278	175	175	175
L4	CST.EFB.L4.84.080.A	84	800	0	1	B13	315	175	190	190
LB4	CST.EFB.LB4.75.073.A	75	730	0	1	B13	315	175	175	175
D23	CST.EFB.D23.64.062.C	64	620	0	1	B01	232	173	204	225
D26	CST.EFB.D26.72.076.C	72	760	0	1	B01	260	173	204	225
D31	CST.EFB.D31.86.080.C	86	800	0	1	B01	306	175	202	224
L5	CST.EFB.L5.100.085.A	100	850	0	1	B13	353	175	190	190
D6	CST.EFB.D6.240.125.B	240	1250	3	1	B0	518	273	216	242

L2



L3



LB3



L4



LB4



D23



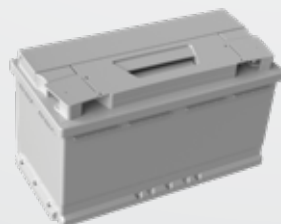
D26



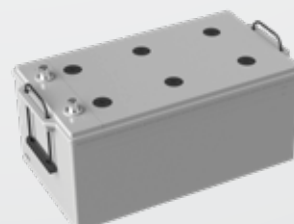
D31



L5

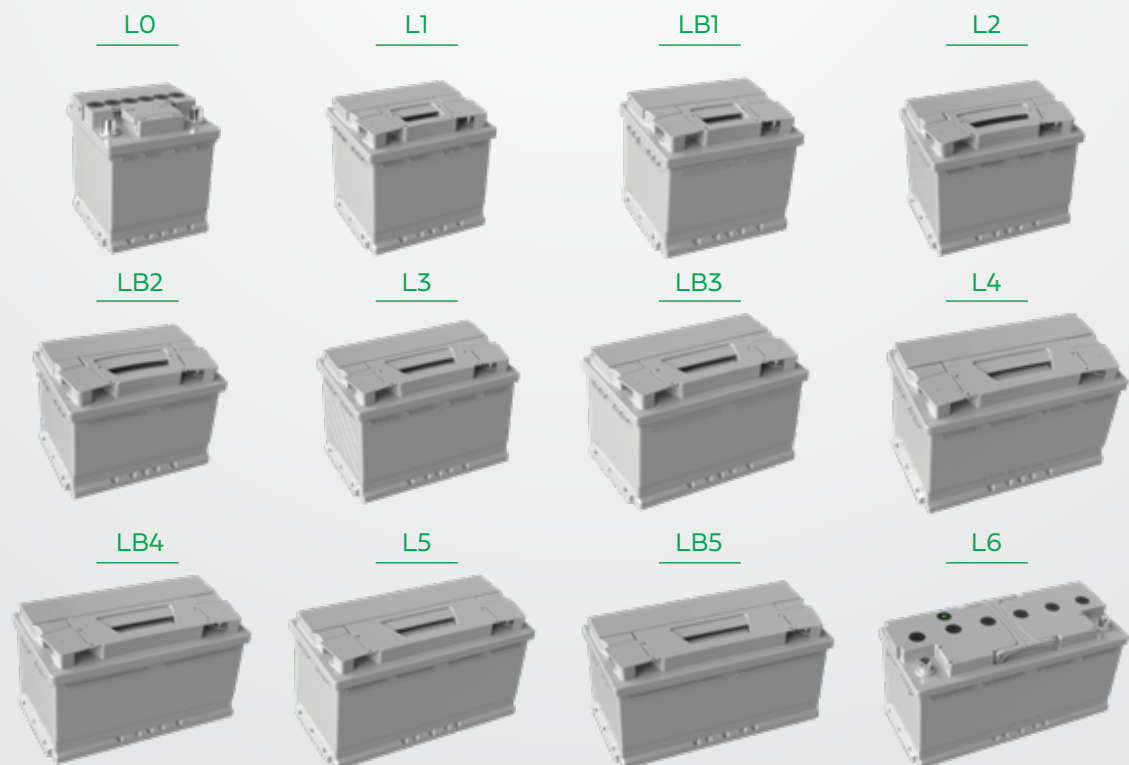


D6



SLI - EN (European Type Batteries)

Type		Capacity at 20 hour rate, +25 °C Ah	CCA EN (A)	Layout	Terminal	Holddown	Overall dimensions (mm)			
BOX	CASTROL CODE						Lenght mm.	Width mm.	Height Except Term. mm	Height mm.
L0	CST.L0.40.034.A	40	340	0	1	B13	175	175	190	190
L1	CST.L1.44.030.A	44	300	0	1	B13	207	175	190	190
	CST.L1.50.042.A	50	420	0	1	B13	207	175	190	190
	CST.L1.55.054.A	55	540	0	1	B13	207	175	190	190
LB1	CST.LB1.44.036.A	44	360	0	1	B13	207	175	175	175
	CST.LB1.50.042.A	50	420	0	1	B13	207	175	175	175
	CST.LB1.55.054.A	55	540	0	1	B13	207	175	175	175
L2	CST.L2.55.045.A	55	450	0	1	B13	242	175	190	190
	CST.L2.55.045.B	55	450	1	1	B13	242	175	190	190
	CST.L2.60.054.A	60	540	0	1	B13	242	175	190	190
	CST.L2.60.054.B	60	540	1	1	B13	242	175	190	190
	CST.L2.63.064.A	63	640	0	1	B13	242	175	190	190
	CST.L2.63.064.B	63	640	1	1	B13	242	175	190	190
LB2	CST.LB2.60.054.A	60	540	0	1	B13	242	175	175	175
	CST.LB2.63.064.A	63	640	0	1	B13	242	175	175	175
L3	CST.L3.72.064.A	72	640	0	1	B13	278	175	190	190
	CST.L3.75.072.A	75	720	0	1	B13	278	175	190	190
	CST.L3.75.072.B	75	720	1	1	B13	278	175	190	190
LB3	CST.LB3.72.064.A	72	640	0	1	B13	278	175	175	175
	CST.LB3.72.064.B	72	640	1	1	B13	278	175	175	175
	CST.LB3.75.072.A	75	720	0	1	B13	278	175	175	175
L4	CST.L4.80.074.A	80	740	0	1	B13	315	175	190	190
	CST.L4.80.074.B	80	740	1	1	B13	315	175	190	190
	CST.L4.90.085.A	90	850	0	1	B13	315	175	190	190
	CST.L4.90.085.B	90	850	1	1	B13	315	175	190	190
LB4	CST.LB4.80.074.A	80	740	0	1	B13	315	175	175	175
L5	CST.L5.90.072.A	90	720	0	1	B13	353	175	190	190
	CST.L5.90.072.B	90	720	1	1	B13	353	175	190	190
	CST.L5.100.083.A	100	830	0	1	B13	353	175	190	190
	CST.L5.100.083.B	100	830	1	1	B13	353	175	190	190
	CST.L5.100.090.A	100	900	0	1	B13	353	175	190	190
	CST.L5.100.090.B	100	900	1	1	B13	353	175	190	190
LB5	CST.LB5.95.085.A	95	850	0	1	B13	353	175	175	175
	CST.LB5.95.085.B	95	850	1	1	B13	353	175	175	175
L6	CST.L6.110.092.A	110	920	0	1	B13	394	175	190	190



SLI - JIS (Asian Type Batteries)

Type		Capacity at 20 hour rate, +25 °C Ah	CCA EN (A)	Layout	Terminal	Holddown	Overall dimensions (mm)			
BOX	CASTROL CODE						Lenght mm.	Width mm.	Height Except Term. mm	Height mm.
B20 (NS40)	CST.B20.42.035.E	42	350	0	3	B0	196	134	202	222
	CST.B20.42.035.F	42	350	1	3	B0	196	134	202	222
	CST.B20.42.035.G	42	350	0	3	B1	196	134	202	222
B24 (NS60)	CST.B24.45.036.A	45	360	0	1	B0	237	127	201	222
	CST.B24.45.036.E	45	360	0	3	B0	237	127	201	222
D23	CST.D23.60.052.A	60	520	0	1	B0	232	173	204	225
	CST.D23.60.052.C	60	520	0	1	B1	232	173	204	225
	CST.D23.68.060.C	68	600	0	1	B1	232	173	204	225
D26 (N50)	CST.D26.70.063.C	70	630	0	1	B1	260	173	205	225
	CST.D26.70.063.D	70	630	1	1	B1	260	173	205	225
	CST.D26.80.066.C	80	660	0	1	B1	260	173	205	225
	CST.D26.80.066.D	80	660	1	1	B1	260	173	205	225
D31 (N70)	CST.D31.90.072.C	90	720	0	1	B1	306	175	202	224
	CST.D31.90.072.D	90	720	1	1	B1	306	175	202	224
	CST.D31.100.085.C	100	850	0	1	B1	306	175	202	224
	CST.D31.100.085.D	100	850	1	1	B1	306	175	202	224

B20



B24



D23



D26



D31



HEAVY COMMERCIAL

MAINTENANCE FREE (MF)

Type		Capacity at 20 hour rate, +25 °C Ah	CCA EN (A)	Layout	Terminal	Holddown	Overall dimensions (mm)			
BOX	CASTROL CODE						Lenght mm.	Width mm.	Height Except Term. mm	Height mm.
C13	CST.C13.105.076.F	105	760	0	1	B03	347	175	207	232
D2	CST.D2.115.080.H	115	800	0	1	B1	344	175	212	237
D3	CST.D3.128.090.F	128	900	0	1	B0	344	171	262	290
D4 (Type A)	CST.ID4.120.080.A	120	800	3	1	B3	513	186	195	223
	CST.ID4.120.080.B	120	800	3	1	B0	513	186	195	223
D5 (Type B)	CST.ID5.150.100.A	150	1000	3	1	B3	513	223	195	223
	CST.ID5.150.100.B	150	1000	3	1	B0	513	223	195	223
	CST.ID5.180.120.A	180	1200	3	1	B3	513	223	195	223
	CST.ID5.180.120.B	180	1200	3	1	B0	513	223	195	223
D6 (Type C)	CST.ID6.200.125.B	200	1250	3	1	B0	518	273	216	242
	CST.ID6.225.125.B	225	1250	3	1	B0	518	273	216	242

C13



D2



D3



D4



D5



D6



SEALED MAINTENANCE FREE (SMF)

Type		Capacity at 20 hour rate, +25 °C Ah	CCA EN (A)	Layout	Terminal	Holddown	Overall dimensions (mm)			
BOX	CASTROL CODE						Lenght mm.	Width mm.	Height Except Term. mm	Height mm.
GR31	CST.GR31.105.090.D	105	900	9	1	B0	328	171	220	241
	CST.GR31.105.090.E	105	900	9	8	B0	328	171	220	241
C13	CST.2C13.105.076.F	105	760	0	1	B03	347	175	213	235
	CST.2C13.105.076.G	105	760	1	1	B03	347	175	213	235
D4 (Type A)	CST.D4.135.095.A	135	950	3	1	B3	513	189	195	223
	CST.D4.135.095.B	135	950	3	1	B0	513	189	195	223
D5 (Type B)	CST.D5.150.100.A	150	1000	3	1	B3	513	223	195	223
	CST.D5.150.100.B	150	1000	3	1	B0	513	223	195	223
	CST.D5.180.120.A	180	1200	3	1	B3	513	223	195	223
	CST.D5.180.120.B	180	1200	3	1	B0	513	223	195	223
D6 (Type C)	CST.D5.190.120.B	190	1200	3	1	B0	513	223	195	223
	CST.D6.200.125.B	200	1250	3	1	B0	518	273	216	242
	CST.D6.225.125.B	225	1250	3	1	B0	518	273	216	242
	CST.D6.240.150.B	240	1500	3	1	B0	518	273	216	242
	CST.D6.250.145.B	250	1450	3	1	B0	518	273	216	242

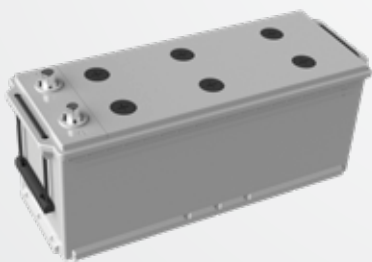
GR31



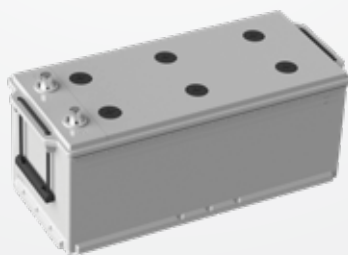
C13



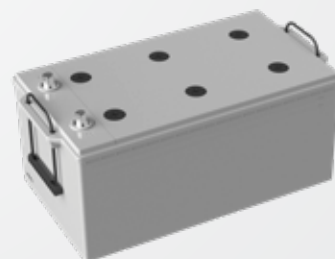
D4



D5



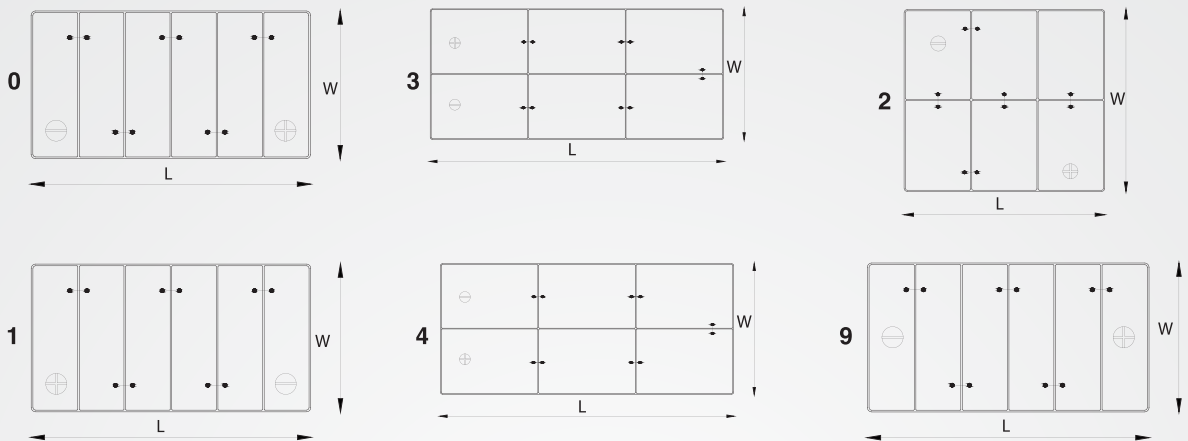
D6



TECHNICAL DRAWINGS

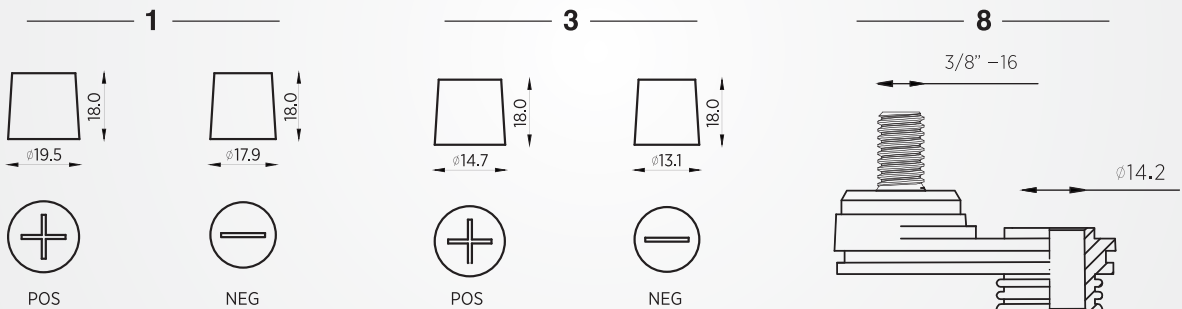
LAYOUT

12 Volt

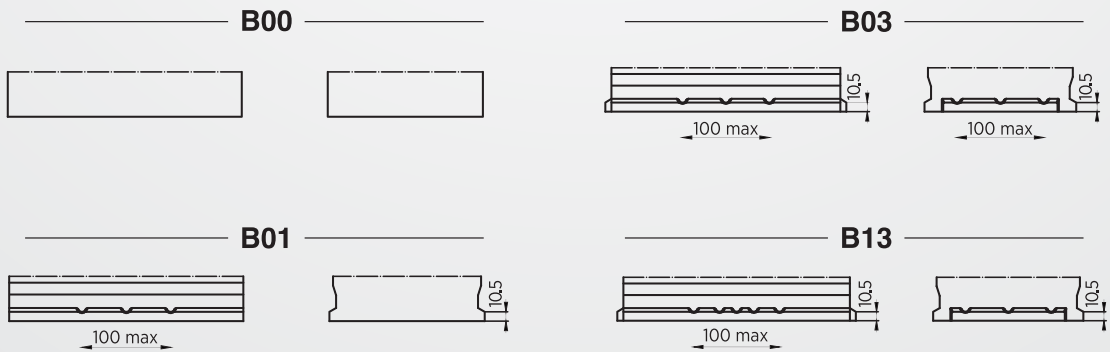


*W: Width, L: Length

TERMINAL



HOLD DOWN





Tepeören Mah. Eski Ankara Asfaltı Cad.
No:210 34959 Tuzla / İstanbul



info@castrol-batteries.eu

Castrol and Castrol logo are trademarks of Castrol Ltd,
used under license by Mutlu Akü ve Malzemeleri Sanayii A.Ş.