

Road-Aware

Helping Drivers be Safe

Hazardous Geometries

Every curve and slope on the highway presents a unique challenge for commercial vehicle drivers.



Meet **Road-Aware**, the revolutionary application that changes how drivers manage their rigs on America's complex roadways.

Road-Aware

Now on Platform Science

Actual Speed 48 mph

Curve Ahead RSS 35 mph

Driver Alerts: (audible & visual)
"Recommended safe speed 35"

RoadAware
Safety Systems LLC

For additional information go to www.road-aware.com

Road-Aware

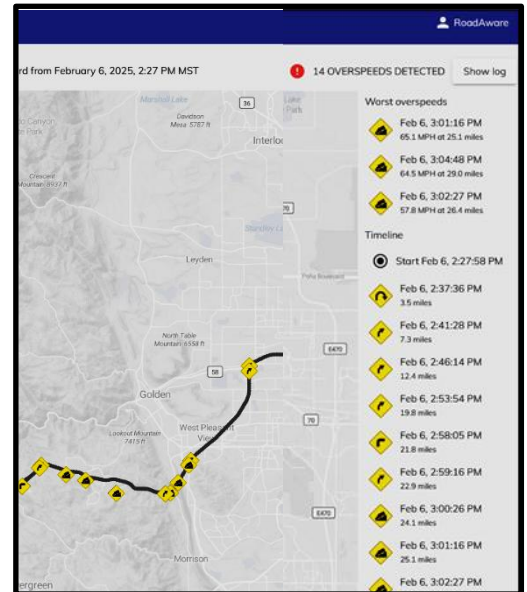
Driver Self Improvement

Why leave your personal safety to chance? **Road-Aware** doesn't just show the way—it shows the safest, most efficient way to manage your specific vehicle. Because every driver deserves to return home safely.

Driver Performance:

Road-Aware provides high resolution speed data to help you visualize your performance in difficult geometries.

1. Am I driving on the edge of rig stability?
2. Do I carry an adequate safety margin in case I have to make a lane change?

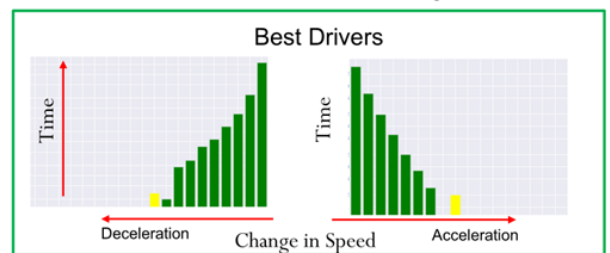


Driver Behavior:

Road-Aware provides high resolution acceleration data to help you visualize brake & throttle use.



Driver Behavior Comparison



For additional information go to www.road-aware.com