



Road-Aware Safety Systems LLC



Decreasing
Fatalities and
Increasing
Trucking Company
Profitability

Fatal Rollover on I80 in
Nevada



This presentation is the property of **Road-Aware** Safety Systems LLC. It is proprietary and confidential to **Road-Aware** and is not to be copied or distributed without the prior written authorization of Raelock. It contains information about a **Road-Aware** proprietary product called **Road-Aware** which also may not be disclosed to others without the written authorization of **Road-Aware**

Overview

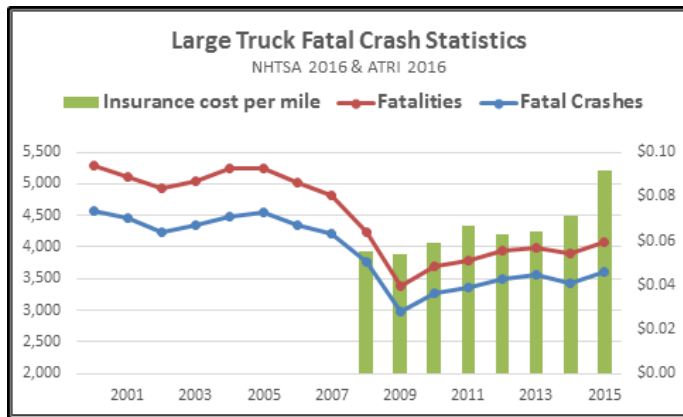
TODAY – large truck crashes will cause

- 10 deaths and 220 injuries
- Economic losses will be over \$75M.
- Average cost of a fatal rollover \$4.3M.



Road-Aware can reduce crashes by providing the driver alerts and safe speeds:

- Truck and trailer configuration specific,
- Load type and weight specific, and
- Specific to the upcoming road geometry



"Our vision is simple – zero fatalities on our roads," said U.S. Transportation Secretary Anthony Foxx.

Washington, Oct. 5, 2016

http://www.nhtsa.gov/About-NHTSA/Press-Releases/nhtsa_zero_deaths_coalition_10052016

The Road-Aware Safety Systems Team

➤ **Brian L Bullock**

- Former CEO of two technology companies, 30 plus years as an engineer and Mapping Professional and Executive, Inventor and owner of US Patents #8554468 and #9613466 for **Road-Aware**

➤ **Garth R Lawrence**

- Former Senior Vice President at two technology companies, 30 plus years in the mapping and remote sensing profession.

➤ **Tim Coyne**

- Senior Engineer and software architect with 20 plus years' experience, former Software Engineering Manager at several technology companies.
- The **Road-Aware** Team has worked together in GIS and mapping applications for 20 plus years. Both Mr. Bullock and Mr. Lawrence have successfully lead the development of new technologies and brought them into the commercial market. Mr. Bullock has taken two companies through the IPO process and into the public sector. All members have years of experience in the geospatial mapping profession and completely understand the underlying fundamentals of the **Road-Aware** product.

Patented

Road-Aware Design Fundamentals



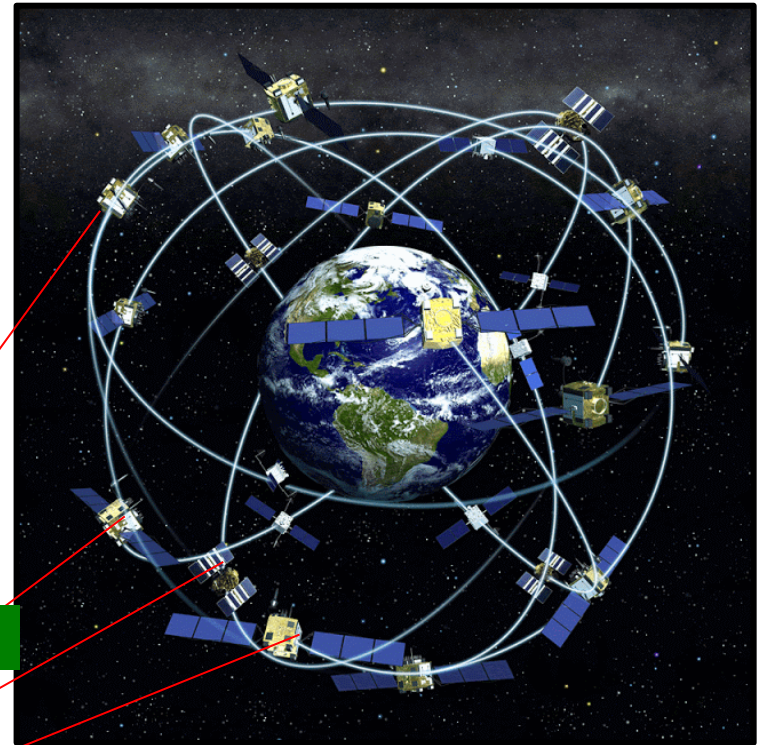
- Driver in the Loop
 - The driver is responsible for the safe management of the vehicle and controls the vehicle
 - **Road-Aware** provides the driver with location specific and truck specific alerts and safe speeds
- Driver Performance is Measured
 - Speed & position of the vehicle is continuously recorded through the entire journey
 - Driver performance is scored for each trip
 - Excessive speeds are flagged and recorded in the journey log

Patented

Road-Aware

A knowledge based system that provides alerts and safe speeds to the driver that are:

*Location specific
Road Geometry specific
Vehicle and load specific*



Position

Speed

Direction

GPS Information

Horizon
View
Panel

Vehicle
Speed
Control



Top
Marker
Control

Bottom
Marker
Control

Patented

Road-Aware

The alerts are progressive and safe speeds are provided audibly and visually to the driver

Information Alerts – green

Warning Alerts – yellow

Critical Alerts - red



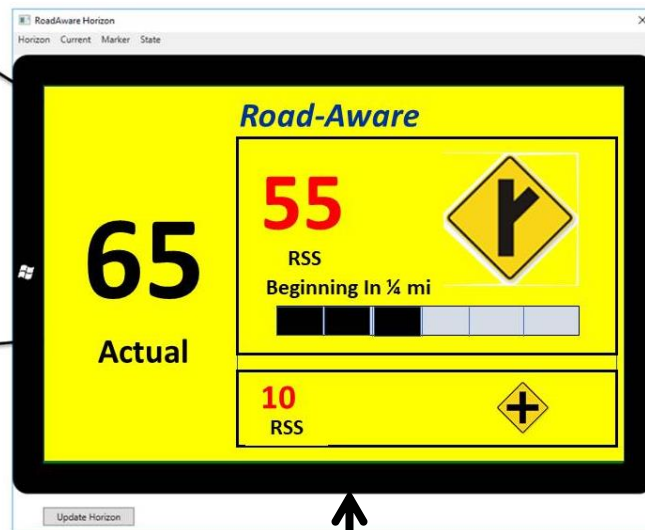
Slope



Curve Radius

Horizon
View
Panel

Vehicle
Speed
Control



Top
Marker
Control

Bottom
Marker
Control

Accurate Road Geometry

Patented

Road-Aware

Trucking company executives set safety margins for the alerts and safe speeds provided to the driver.

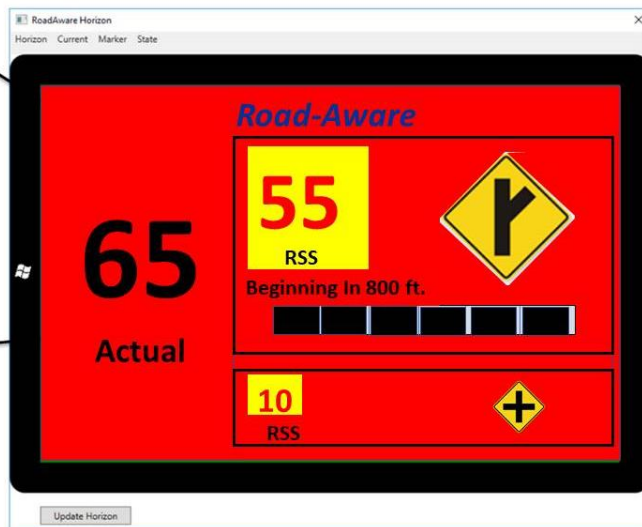
Road-Aware also records vehicle speed & location for the entire journey which permits Safety Managers to score driver performance

Trucking Company Safety Executives

Set Safety Margins &
Score Driver Performance



Horizon
View
Panel



Vehicle
Speed
Control

Top
Marker
Control

Bottom
Marker
Control

Safety
Margins

Journey
Data

Installation Options

Road-Aware will be offered as an application on 'Fleet Management Systems'

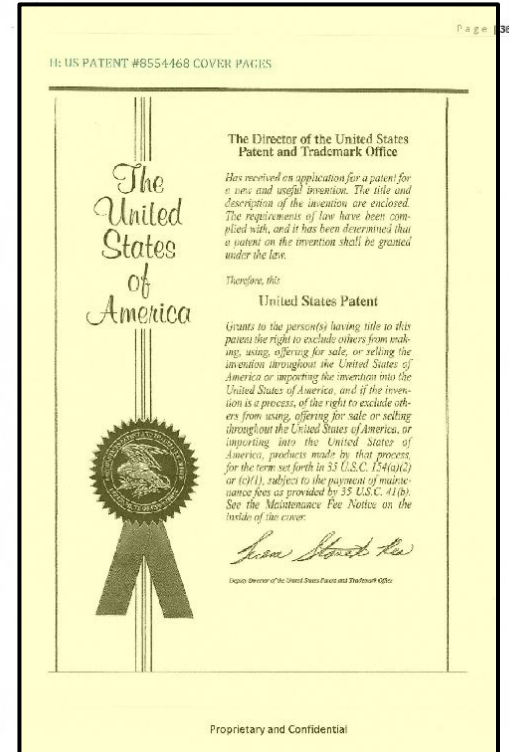


Road-Aware can also be installed on a tablet computer with other trucking apps

Road-Aware is Patented & Proprietary

- Patent Protection
- Software Copyright
- Proprietary Data Base

- The **Road-Aware** offering is protected by US patents issued to Brian Bullock - US Patents #8554468 (Oct 2013) and #9613466 (April 2017) titled "Systems and methods for driver performance assessment and improvement"
- The **Road-Aware** Horizon module, In Cab software, Work Bench software and 3D road database are proprietary to **Road-Aware** Safety Systems LLC and protected by copyright.



Patented

Road-Aware

was tested on AZ 87 'The Beeline'



Tested on Samsung Tab A Tablet Android



Road-Aware

Safety Systems LLC



Garth Lawrence

Managing Director & Principal

glawrence@road-aware.com

Brian Bullock

Principal

bbullock@road-aware.com

