

Road-Aware

Helping Your Drivers be Safe

Hazardous Geometries

Every curve and slope on the highway presents a unique challenge for commercial vehicle drivers.



Meet **Road-Aware**, the revolutionary application that changes how drivers manage their rigs on America's complex roadways.

Now on Platform Science

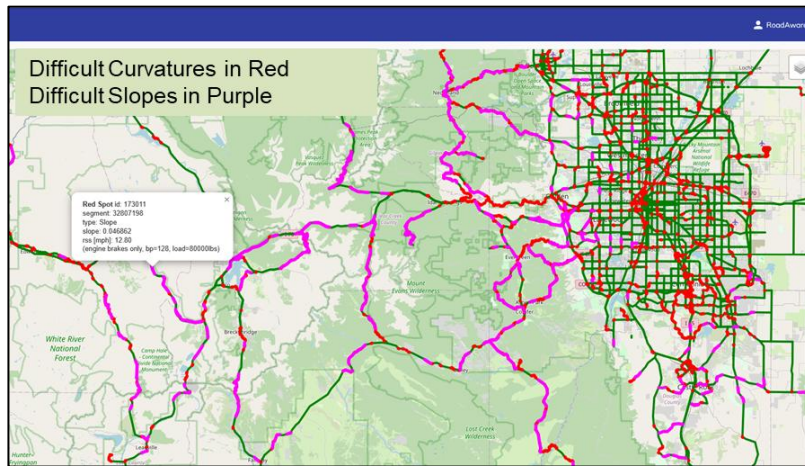
Actual Speed 48 mph
Curve Ahead RSS 35 mph

Driver Alerts: (audible & visual)
"Recommended safe speed 35"

RoadAware
Safety Systems LLC

For additional information go to www.road-aware.com

Helping Drivers be Safe



Road-Aware harnesses our proprietary database of highway geometries—a comprehensive collection of road slopes and curves—to provide real-time help tailored specifically for commercial vehicles.

DRIVER montana
30 MIN DOT 08:00
11:41 PDT
OFF DUTY

Road-Aware

Actual Speed 47 mph
Curve Ahead RSS 35 mph

FM Manager CoPilot LOG OUT

Imagine receiving advance alerts about challenging road sections, with vehicle-specific safe speeds that account for load weight, vehicle dimensions, and road geometry. This isn't just a driver aid; it's intelligent risk management.

The results speak for themselves: fleets using **Road-Aware** experience fewer crashes and significantly improved driver confidence. That means more drivers making it home safely and substantial savings.



For additional information go to www.road-aware.com