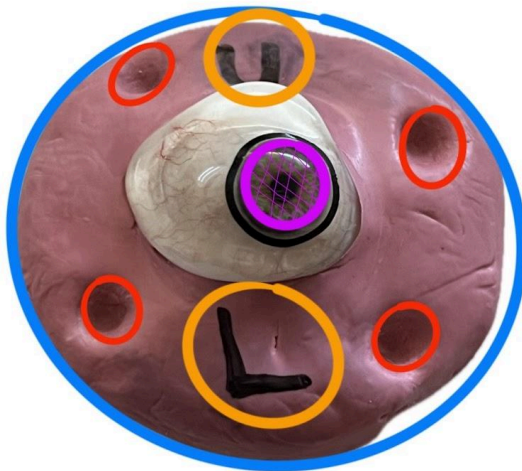
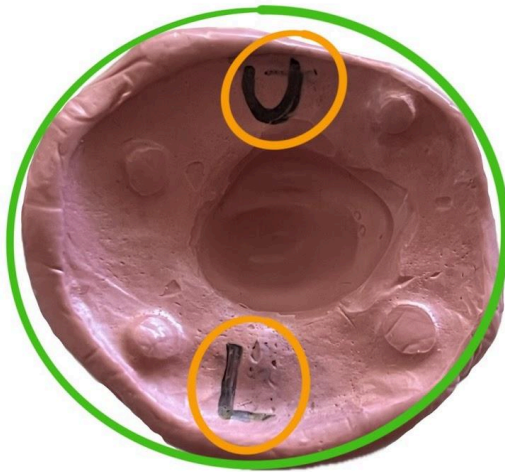


D.I.Y EYEMKR KIT INSTRUCTIONS



- Top mold
- Bottom Mold
- U=upper Lid
L= Lower Lid
- Iris
- Black Circle Sticker
- Key

Ready in 10-15 minutes

CONTENTS

- (4) Silicone putty (2-total=Part A)
(2-total=Part B) *extra (2)A & (2)B
- (1) Black circle sticker
- Gloves
- Lubricant jelly
- Paintbrush
- Practice Kit
 - playdoh
 - craft shell / craft eye
- Return bubble shipping envelope
- Grid paper
- Paper plate
- Cotton tip applicator

Instructions

Start by having washed hands.

Setup: Lay out all the contents of your kit on a clean, flat surface. (Use paper plate provided to support your mold)

! BEFORE YOU START ! Place one Black Circle Sticker:
Using a clean, well fitted prosthetic eye, place one black circle sticker provided over the iris (the color part of your eye). *The sticker may not lay completely flat (it's okay if the sticker does not lay 100% flat. The goal is to try your best to get a smooth edge and centered! Extra stickers are in your kit if you need to try again. Send us a picture if you are unsure!*****

★WATCH THE FOLLOWING VIDEO★:

- [Introduction to Your DIY KIT](#)

👏GET READY! GET SET! LET'S GOOOOOOOOOO! YOU GOT THIS!!!👍

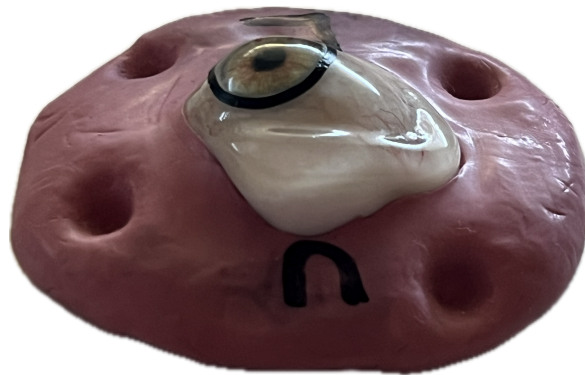


1. Mixing the Silicone Putty

- **Wear Gloves:** Put on the provided gloves (or have clean hands).
- **Combine Putty:** Take equal amounts of Silicone Putty Part A and Part B.
- **Knead Quickly and Thoroughly:** Gently knead the two parts together with your hands until the mixture is one color. *** *The silicone putty will begin to cure as soon as kneading starts, so it is important to work quickly.****

2. Make Bottom of the Mold: Shape the mixed silicone putty into a hamburger patty shape. Pinch off putty material to pack the back of the prosthetic eye. Place patty flat on the paper plate.

- **2. Press the Prosthetic Eye:** While the putty is still soft, gently press your prosthetic eye into the putty to create the bottom portion of the mold. ****Careful to not press too hard; try to keep the edge of the eye from being buried under the putty.****



- **3. Hold Steady:** Hold the eye in place gently and limit movement for the recommended setting time (usually 3-5 minutes) until the silicone putty hardens. ****Depending on the environment setting times will vary. Room temperature is preferred.****
- **4. Create Key Holes:** Before the mold sets completely, use the cotton tip applicator to make 3-4 holes in the putty.

3. Inspecting and Using the Bottom Mold

- **Inspect the Mold:** Check the mold for any imperfections or incomplete areas. (If you are unsure send EYEMKR a picture of your mold.) ***If you need to, try again. No biggie! In your kit you have an extra set of putty! If you do not use your extra putty, pretty please mail the extra putty with your mold.***
- **Apply Lubricant:** Once bottom mold is approved, apply a thin layer of jelly lubricant with a paint brush. ***Avoid getting jelly on the prosthetic eye! Thin layer only! See video tutorials for more detail if you need further clarification.***

4. Making the Top Portion of the Mold

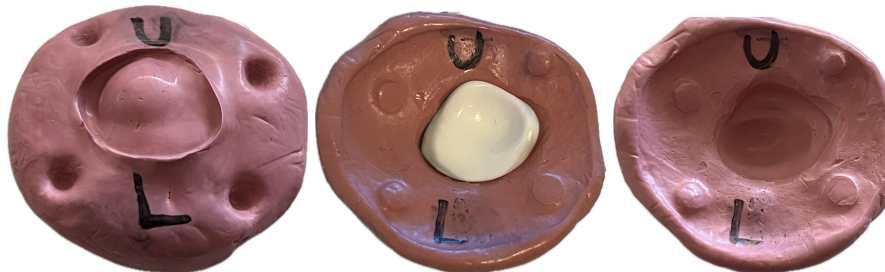
1. **Prepare for Top Mold:** Once the bottom mold has set, it's time to make the top portion of the mold.
2. **Mix Putty:** Mix equal amounts of Part A and Part B silicone until the mixture is one color.
3. **Form a Ball:** Once mixed, gently form the silicone putty into a ball shape.
4. **Apply to the Mold:** Gently press the mixed putty on top of the eye (leaving the prosthetic eye in the bottom mold).
 - a. **Press Down Gently:** Gently press down on the top portion of the mold to ensure good contact. Smooth as needed.



- b.
5. **Hold Steady:** Let the top portion sit for 3-5 minutes until the silicone putty hardens.

5. Removing and Sending the Mold

- **Remove the Mold:** Once both portions of the mold have hardened, carefully separate the top and bottom molds and remove the prosthetic eye. ***Properly clean and care for your prosthetic eye, inspect for putty, jelly, and other debris before reinserting into the socket. ***



- **Submit Photos:** Use the provided photo template to take clear photos of the mold and eye before sending to EYEMKR.
[https://img1.wsimg.com/blobby/go/d6e050e5-d6ca-4a6d-aa00-3a25f484cb52/downloads/EYEMKR%20DIY%20PHOTO%](https://img1.wsimg.com/blobby/go/d6e050e5-d6ca-4a6d-aa00-3a25f484cb52/downloads/EYEMKR%20DIY%20PHOTO%20) ***Use the grid paper provided in the kit to use as a background for your photos. For the best results, use bright natural light, flat surface.***

- **Wait for Approval:** Send photos of mold to EYEMKR on (instagram @EYE.MKR; email Sparkle@eyemkr.com ; text 530-565-6668). ***Before mailing, wait for confirmation from EYEMKR that the molds are correct.***
- **Package Carefully:** Place the approved molds in the return bubble envelope provided.
- **Ship Back:** Send the molds back to EYEMKR using your preferred shipping method. ***If there happens to be extra unused putty, please mail back with your mold. Thanks for helping our business and earth!***

6. TIPS FOR SUCCESS!

- Remember **STEP 1** (place black circle sticker on iris before mixing putty)! Ensure both parts of the silicone putty are mixed thoroughly and quickly. Curing times may vary depending on the environment. Hold the putty steady to avoid any distortions in the mold. When applying jelly, apply a thin layer and avoid getting jelly on the prosthetic eye (wash prosthetic eye thoroughly before reinserting if this occurs). If you use all the putty and need to try again, no big deal! We will ship you more putty! ***Or you can order on amazon at: SDent® 5 Sets Silicone Molding Compound Kit Impression Putty Fast Setting Rubber Putty Non-Flavored Regular Set Pre-Mixed Model 5*(30g+30g) <https://a.co/d/OdHdVqp4> ***
- **HAVE FUN!** Call, text or send us a message on social if you need help at any point during the mold making process! We are more than happy to video chat and walk you through the process! If you'd like to video chat, please contact EYEMKR to schedule.

Need Help? Need Support?:

If you have any questions or need assistance during the process, please do not hesitate to contact us. Visit [EYEMKR.COM](https://eyemkr.com) then click the "DIY EYE" tab, and scroll down to the heading "Yay! I got my kit! Now what?!" for additional resources and video tutorials:

- [Introduction to Your DIY Eye Kit](#)
- <https://eyemkr.com/d-i-y-eye>

THANK YOU FOR BEING A PART OF THE EYE MAKING PROCESS! WELCOME TO THE EYEMKR FAMILY!

 LOVE YOU,

EYEMKR