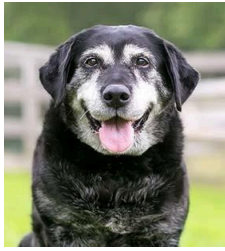


Mobility Matters:

Recognizing and Managing Arthritis In Your Pet



As veterinary medicine continues to advance, cats and dogs are living longer. Similar to humans, an aging pet's body undergoes natural degenerative changes. Understanding joint health promotes a healthy quality of life for your pet.

Signs of Reduced Mobility

Dogs and cats exhibit pain differently than humans, and subtle changes in their behavior indicate arthritis. These changes may include:

- 🦴 Reluctance to sit, go up or down stairs, and/or jump onto things
- 🦴 Stiffness/difficulty getting up after laying down
- 🦴 Lack of interest in activity/sleeping more often
- 🦴 Whimpering/whining while resting
- 🦴 Restlessness

More severe signs include:

- 🦴 Limping/favoring a limb
- 🦴 Yelping or growling while being touched
- 🦴 Joint swelling
- 🦴 Loss of muscle mass (typically noted in hind limbs).



The canine patient pictured above is suffering from the thinning/wasting of muscles in the left hind limb.



Cats with arthritis may groom excessively, go up stairs diagonally, become less playful, hesitate to jump, avoid using the litter box, or remain on the first level of their home.

Assessing Your Pet's Mobility



If you notice that your pet is developing mobility issues, please contact Sylvan Veterinary Hospital to schedule an appointment. Several options are available, and our veterinarians can help you determine what is the best treatment for your pet. Early intervention can make a big difference in your furry friend's life – we are here to help!

Treatment Options

Supplements

Our office carries Dasuquin for dogs and Cosequin for cats. These are two common supplements that contain glucosamine and chondroitin, both of which known to promote joint health. VetriScience Omega 3,6,9, is a fatty acid supplement we carry that has the potential to provide energy and modulate inflammation.



Non-Steroidal Anti-Inflammatories (NSAIDs)

Carprofen, an NSAID, can be used to treat joint soreness and reduce pain in dogs. Carprofen is an oral tablet that can be administered daily or as needed. If your pet is needing carprofen routinely, our doctors recommend checking a blood chemistry every 6 months as the medication is removed from the body by the liver and kidneys. There is another oral NSAID called Galliprant that can be used in dogs with liver disease.

Gabapentin

Gabapentin is an analgesic drug that is commonly used in conjunction with NSAIDs to control chronic pain. Gabapentin's unique action mechanism blocks pain signals sent to the brain through neurons. It is an oral medication administered daily or as needed and may cause mild sedation.

Monoclonal Antibody Therapy

Librela (for dogs) and Solensia (for cats) injections bind to pain receptors associated with arthritis, thus decreasing pain signals sent to the brain. They are an injectable medication that is based on your animal's weight and administered every 4 to 6 weeks at our office.

Pricing



5.5-15.4 lbs: \$70.67

15.5-30.8 lbs: \$137.34

0-22.1 lbs: \$67.03

22.2-44.1 lbs: \$74.38

44.2-66.1 lbs: \$80.26

66.2-88.2 lbs: \$87.54

88.3-132.3 lbs: \$93.23

There are simple adjustments you can make at home to help make everyday life more manageable for you and your furry friends.

Exercise Moderation and Weight Control

- Dogs with arthritis should still have regular exercise. Adjust walks based on your pet's physical abilities. Try frequent short walks with ample rest in between rather than long, cumbersome walks.
- Soothe your pet's muscles/joints with a massage at home. Watch online video demonstrations to guide you through different techniques.
- Keep your pet at a healthy weight. Carrying extra weight worsens joint strain and inflammation.

Traction

- Place mats or rugs on slippery surfaces.
- Ensure nails and the fur around your pet's toes/the bottom of their paws are regularly checked and trimmed.

Environmental Modification

- Put water and food bowls in easily accessible locations. Elevate these bowls to reduce neck strain.
- Use ramps or pet-stairs to provide access to beds, couches, or other favorite spots.
- Provide low-sided litter boxes for your cat, so they are easier to get into.

