

PERFORM NOW

WWW.PERFORMNOW.CO.UK

EVENTS



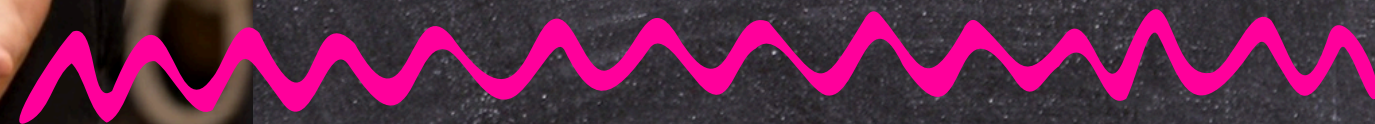


PERFORM NOW

JOIN A PERFORM NOW EVENT

Give your young stars an unforgettable performance opportunity, facilitated by a supportive, nurturing and forward thinking team who are here to make the experience easy for the Principal and enjoyable for your students from the outset!

Join our team at one of the UK's most iconic venue as your performance troupe takes to the stage with their pre-prepared performances and join in our showstopping group finale!





PERFORM NOW

CURRENT LARGE SCALE EVENTS

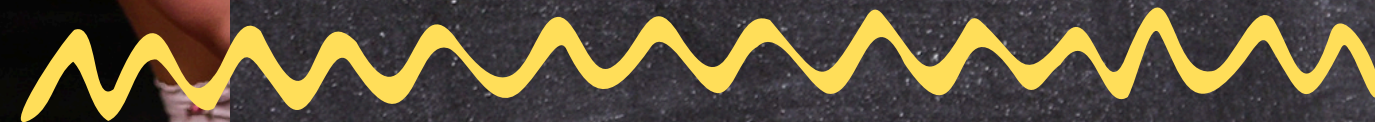
INDIGO AT THE O2

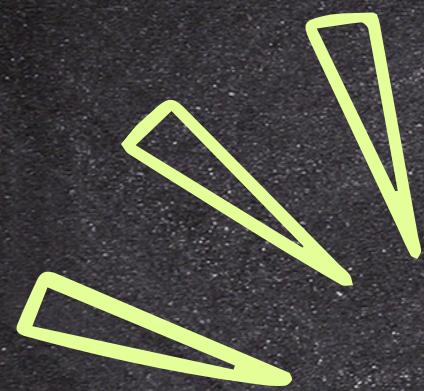
REGENTS PARK OPEN AIR THEATRE

THE BLACKPOOL TOWER BALLROOM

ICC CYMRU WALES

THE LEICESTER CURVE





INDIGO AT THE O2



REQUIRMENTS

- No Minimum numbers
- 2 x's 5minute max performance pieces
- Costumed performance
- Age range 7 to 19 (on the day of performance)
- Fully enhanced DBS staff to student ratio to be met

COSTS

- Entry fee = £ 120 per performer
- Payment schedule
- Payment 1: £100 Deposit - due following sign up
- Payment 2: £25.00 per performer
- Payment 3: £95.00 per performer (less initial deposit)

WHAT YOU GET

- 2 x's 5minute max performance pieces
- 2x's audience tickets included
- Principal image pack
- Headshots taken for parent Purchase



O2 INDIGO

WHAT NEXT?

1. CONFIRM YOUR BOOKING AND MAKE DEPOSIT PAYMENT.
2. PUT TOGETHER YOUR TROUPE
3. PICK AND INFORM US OF YOUR THEME / THEMES
4. REHEARSE & ENSURE REQUIREMENTS ARE MET.

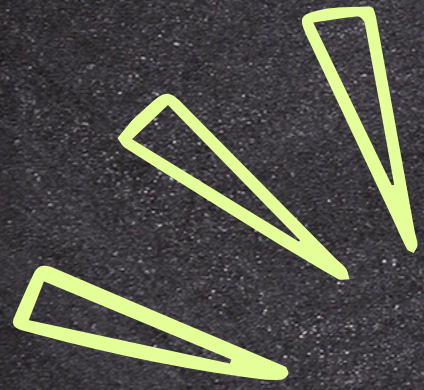
SEE YOU AT THE DOME!

INFO@PERFORMNOW.CO.UK

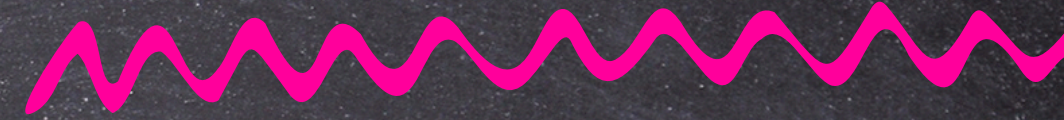
PREPARATION & INFO

- Participating performers must be at least 7 years of age (on the event date) and no older than 19 on the day of performance.
- We will process all licensing requirements and obtain the BOPA performance license. We will require full registers (forms provided and a declaration of health form to bring along on the day).
- Staffing: unlike many other companies we provide a team of fully licensed chaperones to meet the licensing requirement. You will only be required to bring staff who are fully DBS'd on a quota of 1 - 10 8+ please discuss if bringing younger (this can include the principal).
- At this venue male and female identifying students must be kept separate and if bringing a large group of males we advise you bring a male staff member however, we cover male chaperones as we know the nature of the arts tends to mean we have a smaller male attendance than female.
- Costumes should be age appropriate, all performers should arrive in underdress of a bralet or crop and cycle style shorts so no full change is required. and props kept to a minimum, unless discussed otherwise - handheld props are fine.
- Entrances should always be made stage right and the group exit from the stage will be stage left. Note there is minimal room to ent/ext during pieces so this should be avoided where possible.
- Projections are used at this event and these should be uploaded, already linked with your audio. We can assist with these and will advise on upload closer to requirement. Some schools track vocals at a low level for some support and would recommend for choral sections only.
- There is the option to use up to 5 handheld or 5 headset microphones.
- Stage dimensions to note are: 33ft width by 24ft depth.
- Each troupe will have a strict 15minute stage time to either rehearse or space pieces before the main show.
- All schools will participate in the grand finale using their final piece costume. Footage and instructions for learning this will be sent out in advance and rehearse on the day.





REGENTS PARK OPEN AIR



REQUIRMENTS

- Minimum of 25 performers
- 1 x's 10 minute max performance piece
- (Vocal focus no major dance - Theatre staging and basic movement)
- Non-costumed performance (show T-shirt included)
- Age range 8 to 19 (on the day of performance)
- Fully enhanced DBS staff to student ratio to be met

WHAT YOU GET

- 1 x 10 minute max performance piece
- Show T-shirt for performance
- Principal image pack
- Headshots taken for parent Purchase
- Venue tour and Q&A
- Performance on the set in residence at the theatre

COSTS

Entry fee = £ 125 per performer

Payment schedule

Payment 1: £100 Deposit - due following sign up

Payment 2: £25.00 per performer

Payment 3: £100 per performer (less initial deposit)



P

REGENTS

WHAT NEXT?

1. CONFIRM YOUR BOOKING AND MAKE DEPOSIT PAYMENT.
2. PUT TOGETHER YOUR TROUPE
3. PICK AND INFORM US OF YOUR THEME
4. REHEARSE & ENSURE REQUIREMENTS ARE MET.

SEE YOU AT THE PARK

PREPARATION & INFO

- Participating performers must be at least 8 years of age (on the event date) and no older than 19 on the day of performance.
- We will process all licensing requirements and obtain the BOPA performance license. We will require full registers (forms provided and a declaration of health form to bring along on the day).
- Staffing: unlike many other companies we provide a team of fully licensed chaperones to meet the licensing requirement. You will only be required to bring staff who are fully DBS'd on a quota of 1 - 10 (this can include the principal).
- This a non-costume event and coloured show T-shirts to use for performance are included. We recommend black leggings and jazz shoes to accompany, but you may deviate to suit your theme.
- Entrances should always be made stage right and the group exit from the stage will be stage left.
- Most schools track vocals at a low level for some support and we would recommend for choral sections only.
- There is the option to use up to 5 handheld microphones.
- You will be performing on the set in residence at the time.
- Each troupe will have a strict 15minute stage time to either rehearse or space before the main show.
- All schools will participate in the grand finale. Footage and instructions for learning this will be sent out in advance and rehearsed on the day.
- Note that tickets for this event will go on sale around a month before the event and this link will be provided (not included in costs).
- Venue tours and headshots will take place around your stage rehearsal times.

INFO@PERFORMNOW.CO.UK

This truly is a special venue and an event, exclusive to ourselves, one not to miss!!

BLACKPOOL TOWER BALLROOM

REQUIRMENTS

- No Minimum Numbers
- 1 x's 10 minute max performance piece
- Dance, Musical Theatre or mixed welcome
- Costumed performance
- Age range 7 to 19 (on the day of performance)
- Fully enhanced DBS staff to student ratio to be met

WHAT YOU GET

- 1 x 10 minute max performance piece
- Principal image pack
- Headshots taken for parent Purchase
- Participate in group finale

COSTS

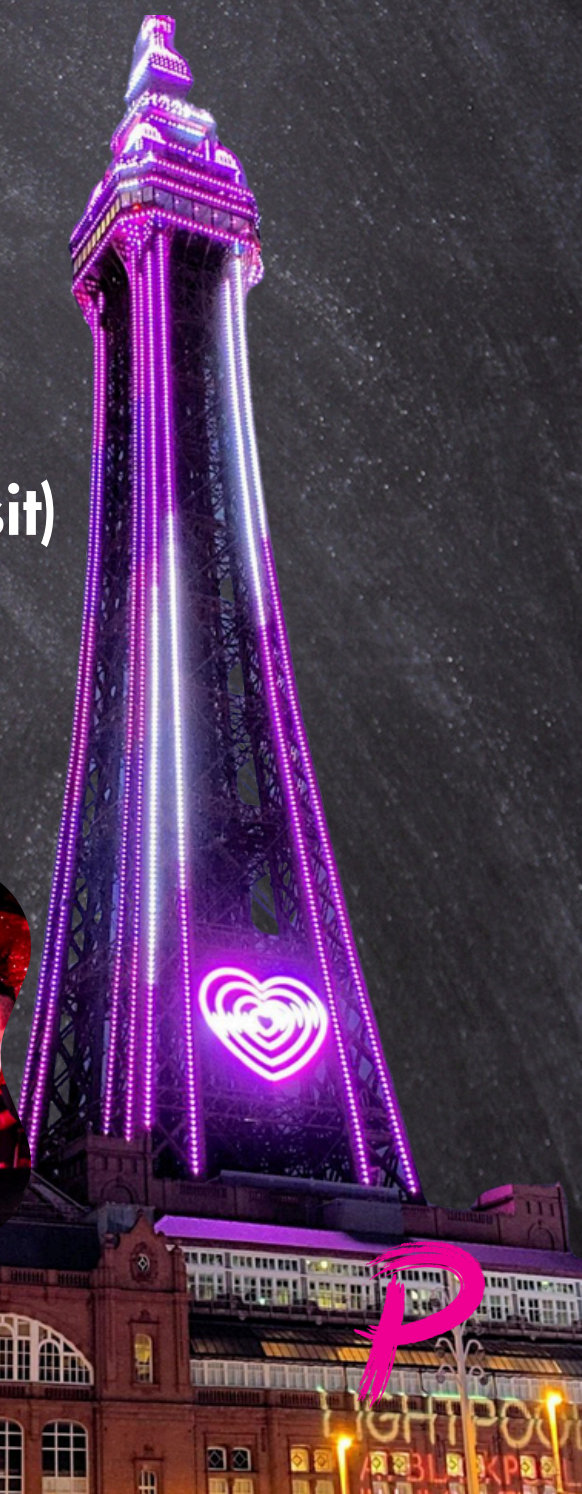
Entry fee = £65.00 per performer

Payment schedule

Payment 1: £100 Deposit - due following sign up

Payment 2: £25.00 per performer

Payment 3: £40.00 per performer (less initial deposit)



BLACKPOOL

WHAT NEXT?

1. CONFIRM YOUR BOOKING AND MAKE DEPOSIT PAYMENT.
2. PUT TOGETHER YOUR TROUPE
3. PICK AND INFORM US OF YOUR THEME
4. REHEARSE & ENSURE REQUIREMENTS ARE MET.

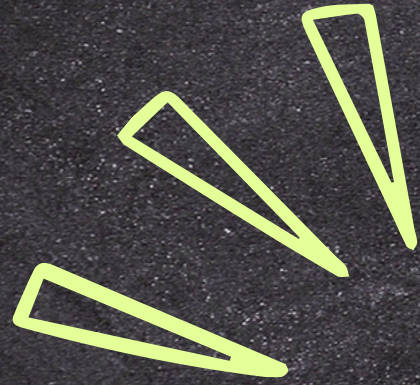
SEE YOU ON THE DANCEFLOOR

PREPARATION & INFO

- Participating performers must be at least 7 years of age (on the event date) and no older than 19 on the day of performance.
- We will process all licensing requirements and obtain the BOPA performance license. We will require full registers (forms provided and a declaration of health form to bring along on the day).
- Staffing: unlike many other companies we provide a team of fully licensed chaperones to meet the licensing requirement. You will only be required to bring staff who are fully DBS'd on a quota of 1 - 10 (this can include the principal).
- This is a costumed event and these should be age appropriate and all performers should arrive in underdress of a bralet or crop and cycle style shorts so no full change is required.
- Entrances should always be made stage right and the group exit from the stage will be stage left and as the space has a round audience we recommend you play to this as well as centre.
- Most schools track vocals at a low level for some support and we would recommend for choral sections only. There is the option to use up to 5 handheld microphones.
- Each troupe will have a strict 15minute stage time to either rehearse or space before the main show.
- All schools will participate in the grand finale. Footage and instructions for learning this will be sent out in advance and rehearsed on the day.

INFO@PERFORMNOW.CO.UK





ICC CYMRU WALES



REQUIRMENTS

- No Minimum Numbers
- 1 x's 10 minute max performance piece
- Dance, Musical Theatre or mixed welcome
- Costumed performance
- Age range 8 to 19 (on the day of performance)
- Fully enhanced DBS staff to student ratio to be met

WHAT YOU GET

- 1 x 10 minute max performance piece
- Principal image pack
- Headshots taken for parent Purchase

COSTS

Entry fee = £65.00 per performer

Payment schedule

Payment 1: £100 Deposit - due following sign up

Payment 2: £25.00 per performer

Payment 3: £40.00 per performer (less initial deposit)



ICC WALES

WHAT NEXT?

1. CONFIRM YOUR BOOKING AND MAKE DEPOSIT PAYMENT.
2. PUT TOGETHER YOUR TROUPE
3. PICK AND INFORM US OF YOUR THEME / THEMES
4. REHEARSE & ENSURE REQUIREMENTS ARE MET.

SEE YOU THERE!

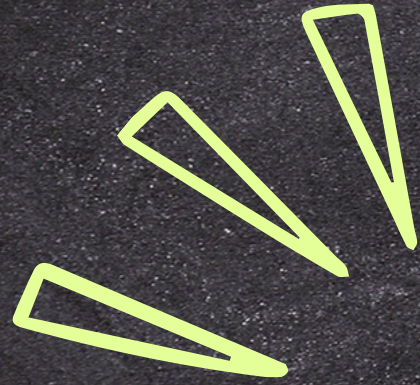
POB LWC - GOOD LUCK

PREPARATION & INFO

- Participating performers must be at least 8 years of age (on the event date) and no older than 19 on the day of performance.
- We will process all licensing requirements and obtain the BOPA performance license. We will require full registers (forms provided and a declaration of health form to bring along on the day).
- Staffing: unlike many other companies we provide a team of fully licensed chaperones to meet the licensing requirement. You will only be required to bring staff who are fully DBS'd on a quota of 1 - 10 (this can include the principal).
- Costumes should be age appropriate, all performers should arrive in underdress of a bralet or crop and cycle style shorts so no full change is required. and props kept to a minimum, unless discussed otherwise - handheld props are fine.
- Entrances should always be made stage right and the group exit from the stage will be stage left. Note there is minimal room to ent/ext during pieces so this should be avoided where possible.
- Projections are used at this event and these should be uploaded, already linked with your audio. We can assist with these and will advise on upload closer to requirement. Some troupe's track vocals at a low level for some support and would recommend for choral sections only.
- There is the option to use up to 5 handheld microphones.
- Each troupe will have a strict 15minute stage time to either rehearse or space pieces before the main show.
- All schools will participate in the grand finale using their final piece costume. Footage and instructions for learning this will be sent out in advance and rehearse on the day.

INFO@PERFORMNOW.CO.UK





LEICESTER CURVE



REQUIREMENTS

- No Minimum numbers
- 1 x 10 minute max performance piece
- Costumed performance
- Age range 8 to 19 (on the day of performance)
- Fully enhanced DBS staff to student ratio to be met

COSTINGS

Entry fee = £99.00 per student

Payment schedule

Payment 1: £100 Deposit - due following sign up

Payment 2: £25.00 per student

Payment 3: £74.00 per student (less initial deposit).

WHAT YOU GET

- 1 x's 10 minute max performance piece
- Principal image pack
- A souvenir t-shirt for performers
- Headshots taken for parent Purchase
- A supportive and nurturing team to help every step of the way.





CURVE

WHAT
NEXT?

1. CONFIRM YOUR BOOKING AND MAKE DEPOSIT PAYMENT.
2. PUT TOGETHER YOUR TROUPE
3. PICK AND INFORM US OF YOUR THEME
4. REHEARSE & ENSURE REQUIREMENTS ARE MET.

SEE YOU AT THE CURVE



PREPARATION & INFO

- Participating performers must be at least 8 years of age (on the event date) and no older than 19 on the day of performance.
- We will process all licensing requirements and obtain the BOPA performance license. We will require full registers (forms provided and a declaration of health form to bring along on the day).
- Staffing: unlike many other companies we provide a team of fully licensed chaperones to meet the licensing requirement. You will only be required to bring staff who are fully DBS'd on a quota of 1 - 10 (this can include the principal).
- This is a costumed event and these should be age appropriate and all performers should arrive in underdress of a bralet or crop and cycle style shorts so no full change is required.
- Entrances should always be made stage right and the group exit from the stage will be stage left.
- Most schools track vocals at a low level for some support and we would recommend for choral sections only. There is the option to use up to 5 handheld microphones.
- Each troupe will have a strict 15minute stage time to either rehearse or space before the main show.
- All schools will participate in the grand finale. Footage and instructions for learning this will be sent out in advance and rehearsed on the day.

INFO@PERFORMNOW.CO.UK





**WE LOOK FORWARD TO SEEING
YOU AT AN EVENT SOON!!!**

INFO@PERFORMNOW.CO.UK