



**E=TGM<sup>2</sup>**



## Processing Solid Waste to Produce Electricity, Heat, Biodiesel, BioChar, and/or Water Treatment

### Who needs this System?

The current garbage collection system requires an extensive use of landfills. Landfills have high operating expenses. New landfill cell expansion has high capital costs. Landfill environmental liability due to Greenhouse Gas Emissions and Liquid Leachates loom over many operations.

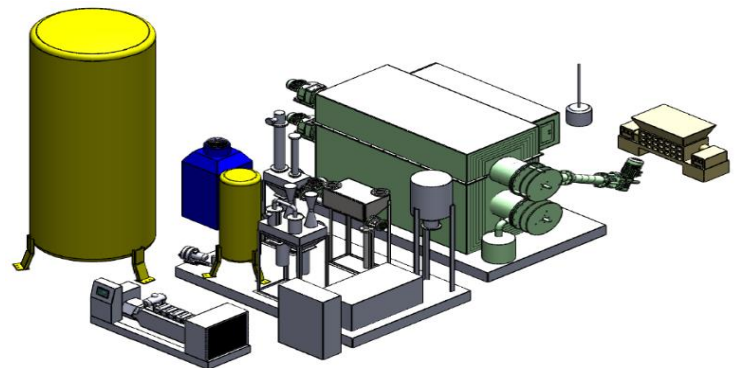
**Don't bury your garbage. Generate Utility Revenue from it.**

### We Process:

- Agricultural Waste
- Paper / Cardboard
- Used tires
- Hard / Softwood waste
- Food Processing Waste
- Household Waste
- Sewage Treatment Sludge
- Medical Waste
- Plastics
- Used Motor Oil
- Used railway ties

### Benefits:

<b>Economic</b>	System generates revenue allowing return on investment.
<b>Environmental</b>	Reduce new and existing landfill waste.
<b>Practical</b>	Modular, Scalable, Easy to Transport, Easy to Install. Low operating costs, are easy to maintain, designed to last. Systems meet US EPA & European environmental standards.



Greg Harasym  
1 403 869-4908  
harasym.greg@etgm2.com

Eric Friesen  
1 587 891-5251  
eric.friesen@coolgreensolutions.ca

## Approximate Waste to Electrical Generation (subject to waste composition)

Garbage Processed (tons / day)	Electrical Power Generated	Rough Payback Period
3	120 kW	10 Years
10	360 kW	6.5 Years
25	1.5 MW	5 Years
100	8 MW	3 Years
200	20 MW	2.5 Years

## Approximate Waste to Diesel Production (subject to waste composition)

Garbage Processed (tons / day)	Approximate Diesel Generated	Rough Payback Period
5	300 litres per day	7 Years
25	1,500 litres per day	4.5 Years
50	3,000 litres per day	3 Years
100	6,000 litres per day	2.5 Years
200	12,000 litres per day	2 Years

## Advantages of Produced Diesel Fuel

- No extra fuel upgrading or hydrotreatment required.  
Diesel Fuel product is compatible with standard diesel engines

- Passes ASTM tests (see [SwRI Fuel Certification Report](#))

- Eligible for RINs and LCFS credits for extra Revenues

- Fuel burns clean with:
  - lower SOx emissions,
  - lower NOx emissions,
  - lower PM / soot



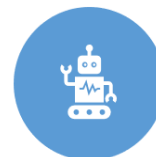
WE PROVIDE COMPLETE TURN-KEY SOLUTIONS, DESIGNED FOR YOUR SPECIFIC NEEDS.



WORK WITH ALL JURISDICTIONS FOR APPROVAL AND COMPLIANCE.



BUILD, INSTALL, COMMISSION, AND TRAIN STAFF.



PROVIDE MAINTENANCE.

**Greg Harasym**  
1 403 869-4908  
[harasym.greg@etgm2.com](mailto:harasym.greg@etgm2.com)

**Eric Friesen**  
1 587 891-5251  
[eric.friesen@coolgreensolutions.ca](mailto:eric.friesen@coolgreensolutions.ca)