



Processing Solid Waste to Produce Electricity, Heat, Biodiesel, BioChar, and/or Water Treatment

Who needs this System?

The current garbage collection system requires an extensive use of landfills. Landfills have high operating expenses. New landfill cell expansion has high capital costs. Landfill environmental liability due to Greenhouse Gas Emissions and Liquid Leachates loom over many operations.

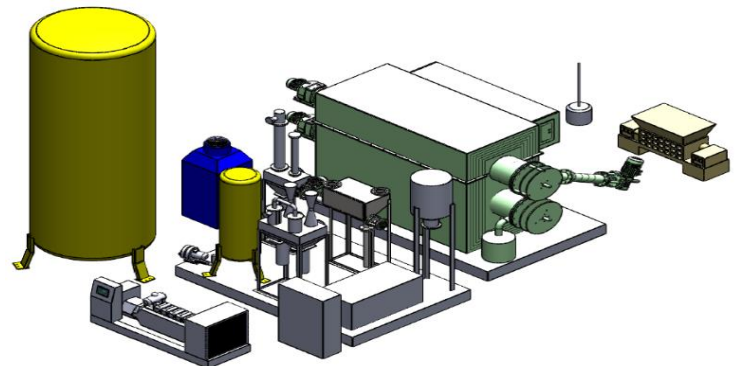
Don't bury your garbage. Generate Utility Revenue from it.

We Process:

- Agricultural Waste
- Paper / Cardboard
- Used tires
- Hard / Softwood waste
- Food Processing Waste
- Household Waste
- Sewage Treatment Sludge
- Medical Waste
- Plastics
- Used Motor Oil
- Used railway ties

Benefits:

| | |
|----------------------|---|
| Economic | System generates revenue allowing return on investment. |
| Environmental | Reduce new and existing landfill waste. |
| Practical | Modular, Scalable, Easy to Transport, Easy to Install. Low operating costs, are easy to maintain, designed to last. Systems meet US EPA & European environmental standards. |



Greg Harasym
1 403 869-4908
harasym.greg@etgm2.com

Eric Friesen
1 587 891-5251
eric.friesen@coolgreensolutions.ca

Approximate Waste to Electrical Generation (subject to waste composition)

| Garbage Processed (tons / day) | Electrical Power Generated |
|-----------------------------------|----------------------------|
| 3 | 100 kW |
| 10 | 360 kW |
| 25 | 1 MW |
| 100 | 4 MW |
| 200 | 8 MW |

Approximate Waste to Diesel Production (subject to waste composition)

| Garbage Processed (tons / day) | Approximate Diesel Generated |
|-----------------------------------|------------------------------|
| 5 | 300 litres per day |
| 25 | 1,500 litres per day |
| 50 | 3,000 litres per day |
| 100 | 6,000 litres per day |
| 200 | 12,000 litres per day |

Advantages of Produced Diesel Fuel

- No extra fuel upgrading or hydrotreatment required.

Diesel Fuel product is compatible with standard diesel engines

- Passes ASTM tests (see [SwRI Fuel Certification Report](#))

- Eligible for [RINs](#) and [LCFS](#) credits for extra Revenues

- Fuel burns clean with:
 - lower [SOx](#) emissions,
 - lower [NOx](#) emissions,
 - lower [PM / soot](#)



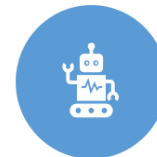
WE PROVIDE COMPLETE TURN-KEY SOLUTIONS, DESIGNED FOR YOUR SPECIFIC NEEDS.



WORK WITH ALL JURISDICTIONS FOR APPROVAL AND COMPLIANCE.



BUILD, INSTALL, COMMISSION, AND TRAIN STAFF.



PROVIDE MAINTENANCE.

Greg Harasym
1 403 869-4908
harasym.greg@etgm2.com

Eric Friesen
1 587 891-5251
eric.friesen@coolgreensolutions.ca